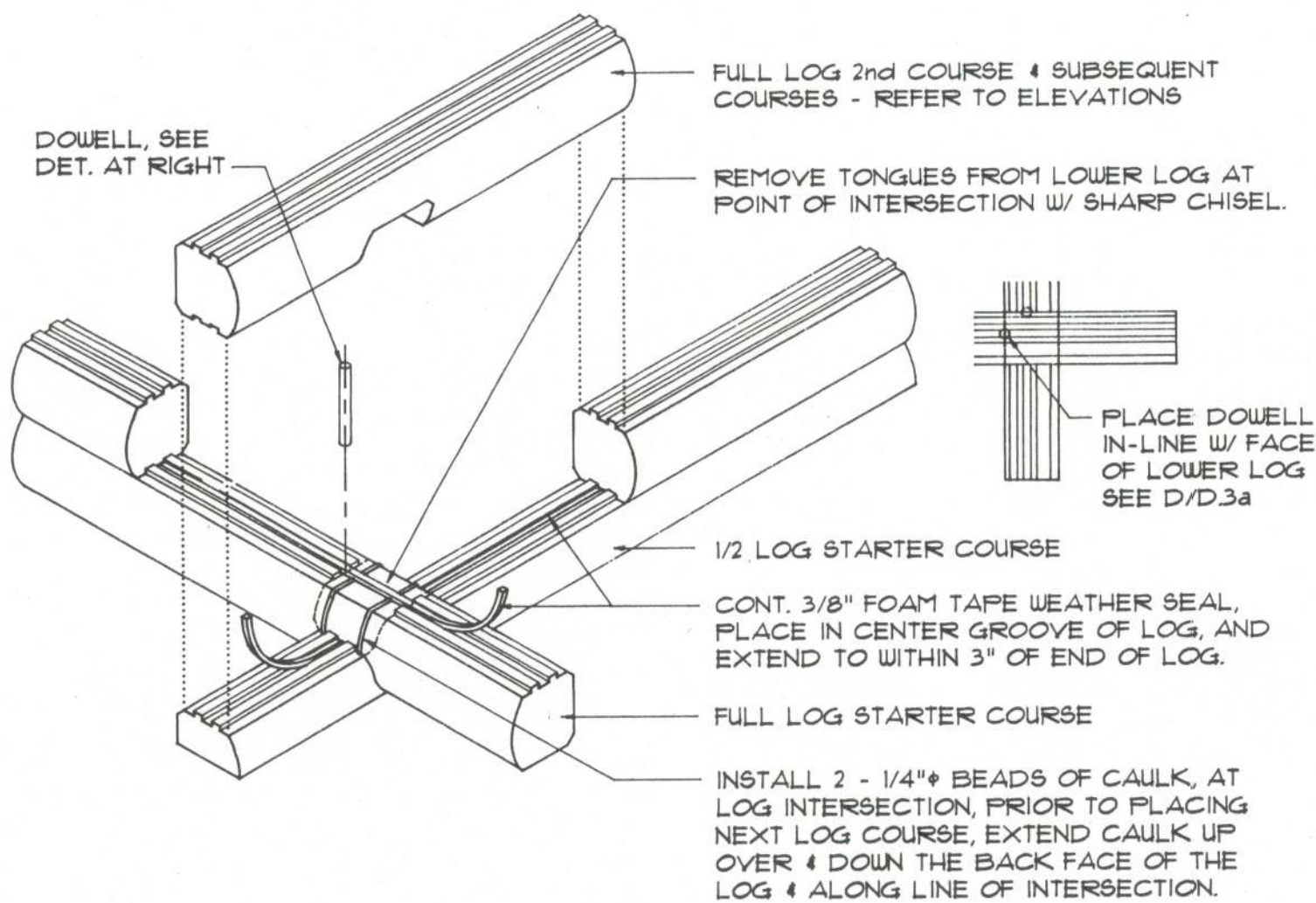


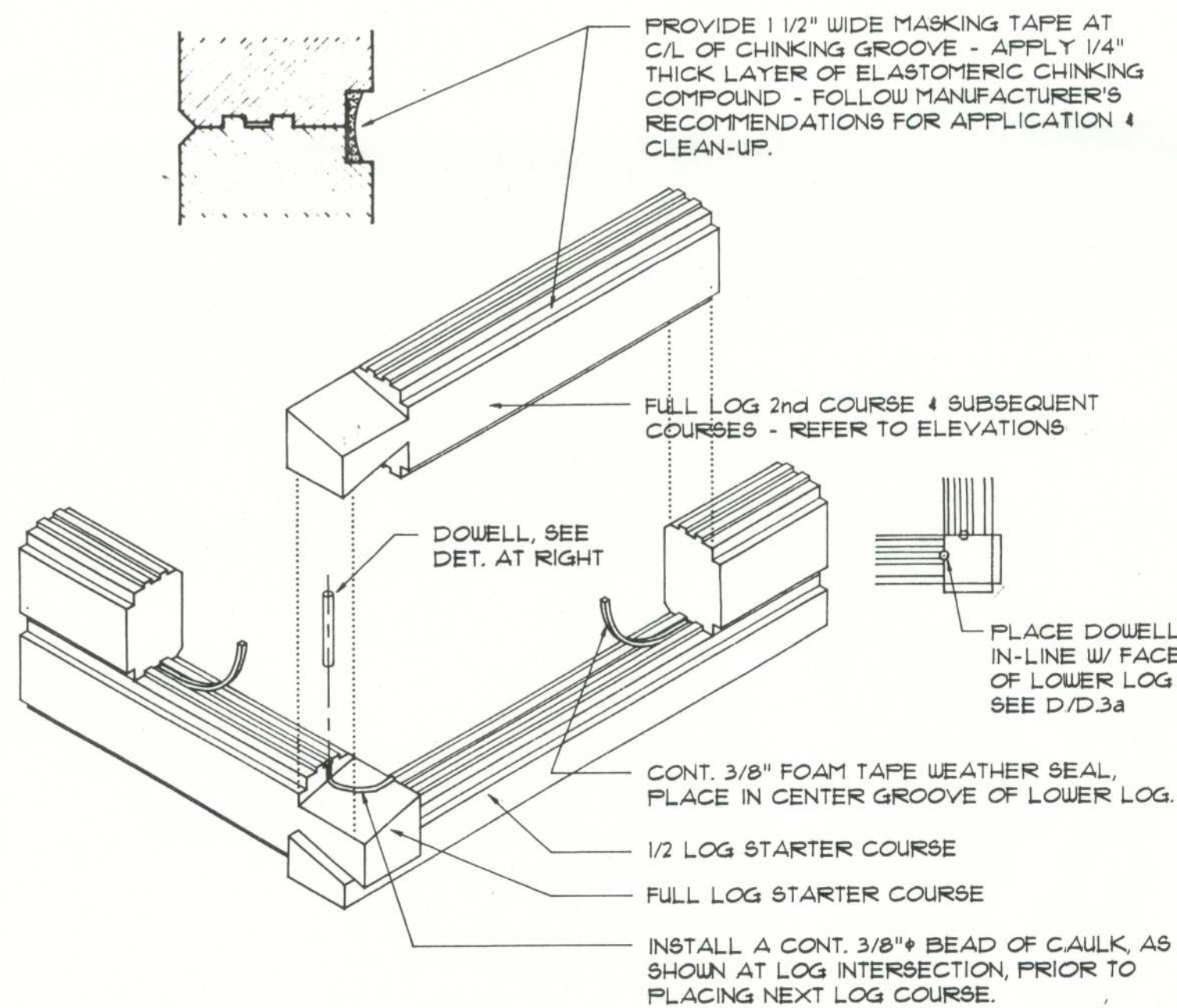
NOTE!
ALL 0/8 LOG INTERSECTION JOINTS SHALL BE FULLY CAULKED AGAINST WATER PENETRATION.



Saddle Notch Corner

SCALE: 1" = 1'-0"

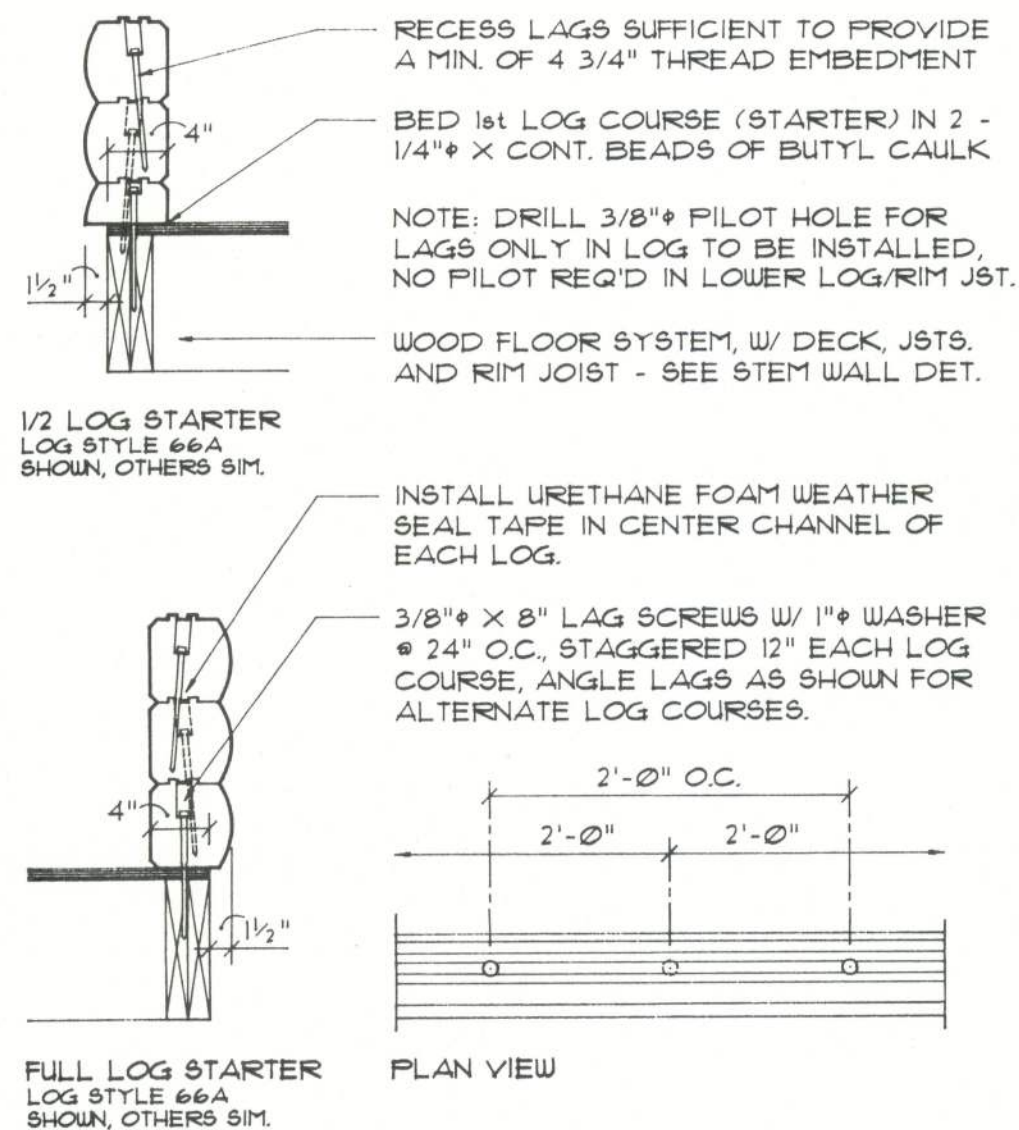
NOTE! LOG STYLE 66A SHOWN, OTHERS SIMILAR.



Dovetail Corner

SCALE: 1" = 1'-0"

NOTE! LOG STYLE 68D SHOWN, OTHERS SIMILAR.



NOTE!

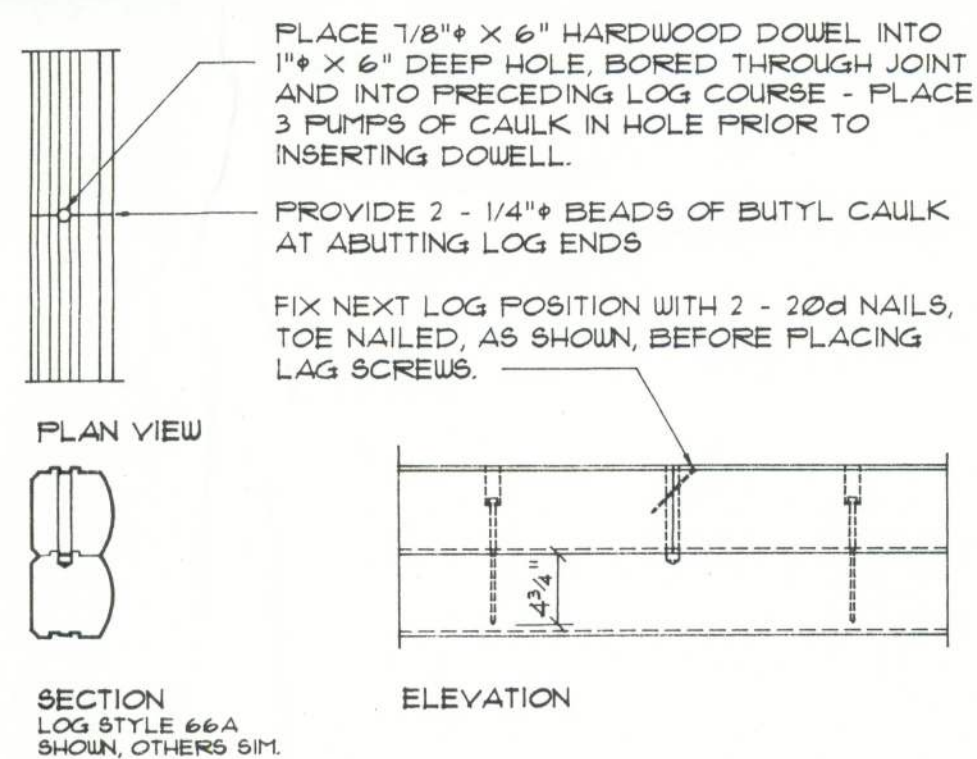
8" HIGH LOGS REQUIRE 10" LONG LAG SCREWS.

NOTE!

FOR COMPRESSION SPRING LOG ATTACHMENT W/ LAG SCREWS OR THRU-BOLT SYSTEM, REFER TO D3g OR D3h - D3k.

Lag Screw Placement

SCALE: 1" = 1'-0"

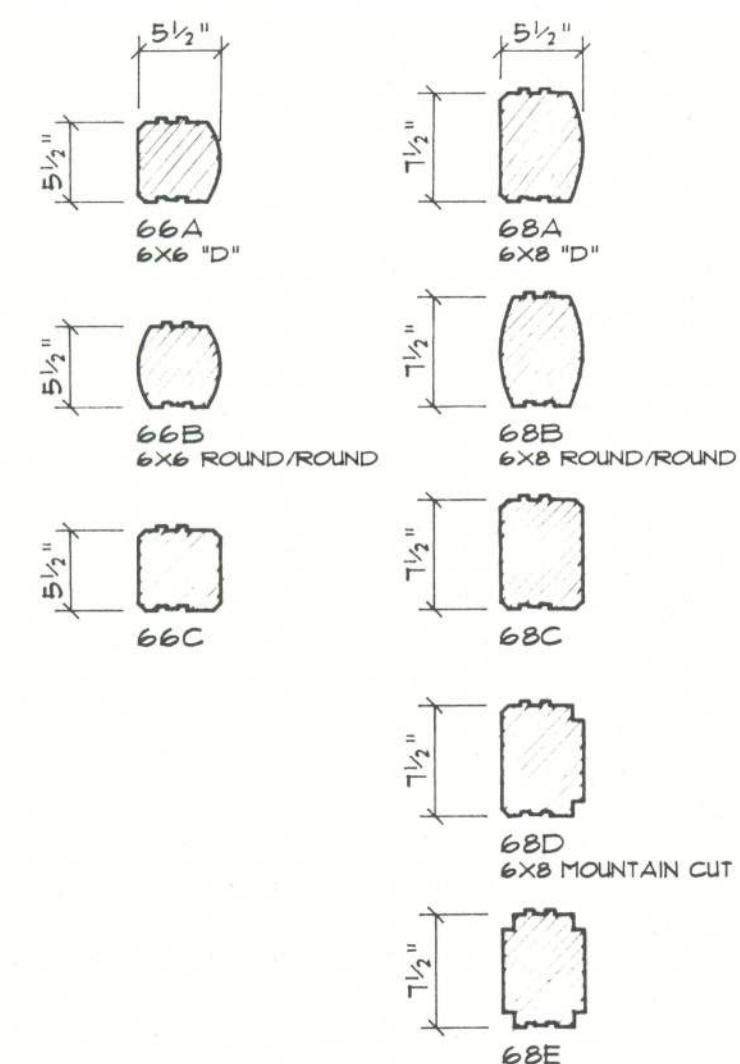


NOTE!

FOR TIGHTER BUTT JOINTS, POSITION EA. NEW SECTION OF LOG IN PLACE AND "BUMP" INTO CONTACT W/ THE PRECEDING LOG SECTION W/ A 3 LB. HAMMER, SAW CUT THE JOINT WITH A "SAWZALL" OR SIMILAR STYLE POWER SAW - CUT ALL THE WAY TO THE PRECEDING LOG COURSE, CAULK & RESET THE LOG SECTION W/ THE 3 LB. HAMMER AND COMPLETE THE JOINT W/ 2 - 20d NAILS AS NOTED ABOVE. AFTER THE NEW LOG SECTION IS LAGGED (2 MIN.) IN PLACE, COMPLETE THE DOWEL PORTION OF THE JOINT.

Log Splice DETAIL

SCALE: 1" = 1'-0"

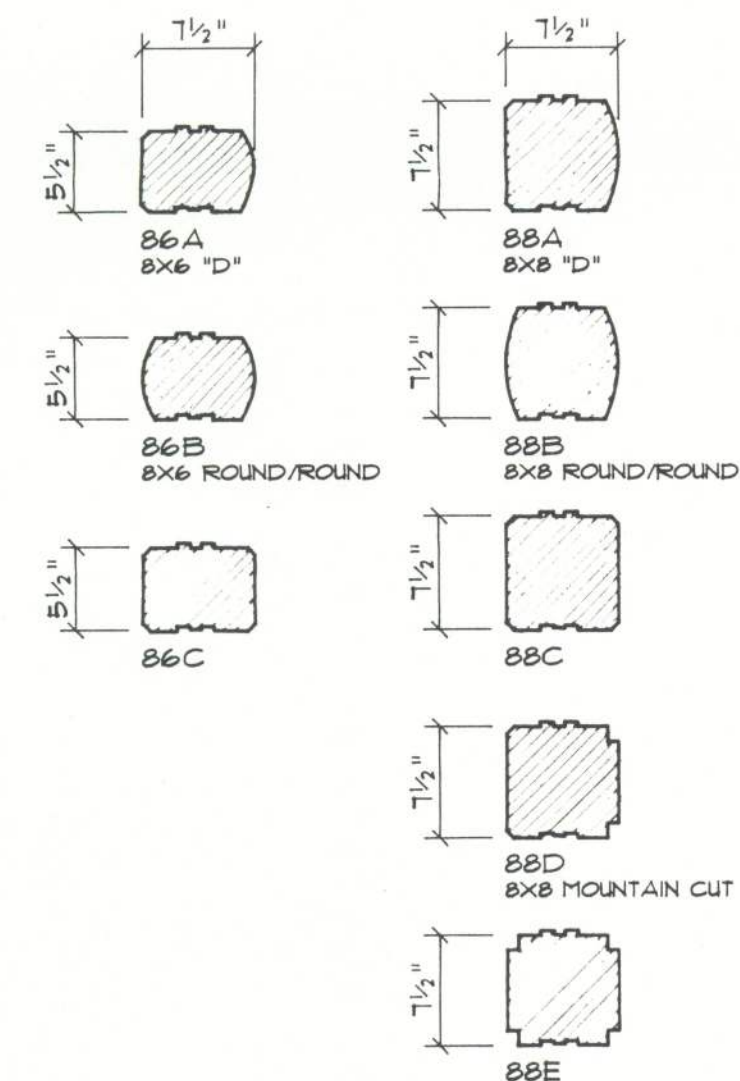


6" Log Styles

SCALE: 1" = 1'-0"

NOTE!

SEE ALSO NOTES ON D3f, THIS SHEET.



8" Log Styles

SCALE: 1" = 1'-0"

NOTE!

- ADDITIONAL NON-STANDARD LOG STYLES:
 66F - SHIPLAP SIDING
 8X6F - SHIPLAP SIDING
 6X8G - SPLINE VERSION OF 68A
- MATCHING 1/3 LOG SIDING FOR ALL STYLES
- WOOD SPECIES:
 SOUTHERN BALD CYPRESS
 WESTERN RED CEDAR

SHEET: D.3a

REVISION:

DRAWN: NPG

DATE: 01NOV96
 COM: SRLH

Custom Log Home Standard Details:
LOG WALL DETAILS

SUWANEE RIVER
 LOG HOMES, INC.
 Manufacturers
 Specializing in Cypress & Cedar Custom Homes
 4345 HIGHWAY 90, WELLSBORO, FLORIDA 32094
 904.963.065/56.47 / 1.800.967.065/56.47

DUE TO VARIANCE IN LOCAL CODES/STANDARDS, EACH MAKER NO WARRANTY AS TO PLANS CONFORMANCE. THE CUSTOMER IS RESPONSIBLE FOR APPROVAL BY A LICENSED INSPECTOR AND/OR ENGINEER IF REQUIRED. ANY DISCREPANCIES IN THE PLANS SHALL BE BROUGHT TO THE ATTENTION OF THE ENGINEERING DEPARTMENT BEFORE PROCEEDING WITH THAT PORTION OF WORK. THESE PLANS ARE THE PROPERTY OF SRI.