

FIREBLOCKING REQUIREMENTS

(PER FBC07 SEC. 717.2)

FIREBLOCKING:

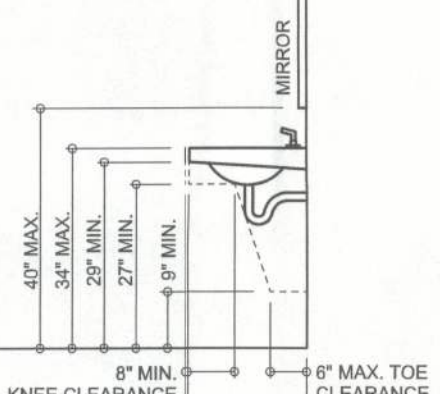
- IN COMBUSTIBLE CONSTRUCTION, FIREBLOCKING SHALL BE INSTALLED TO CUT OFF CONCEALED DRAFT OPENINGS (BOTH VERTICAL AND HORIZONTAL) AND SHALL FORM AN EFFECTIVE BARRIER BETWEEN FLOORS, BETWEEN A TOP STORY AND A ROOF OR ATTIC SPACE.
- BATTS OR BLANKETS OF MINERAL OR GLASS FIBER OR OTHER APPROVED NONRIGID MATERIALS SHALL BE ALLOWED AS FIREBLOCKING IN WALLS CONSTRUCTED USING PARALLEL ROWS OF STUDS OR STAGGERED STUDS.
- FIREBLOCKING SHALL BE PROVIDED IN CONCEALED SPACES OF STUD WALLS AND PARTITIONS, INCLUDING FURRED SPACES, AND PARALLEL ROWS OF STUDS OR STAGGERED STUDS, AS FOLLOWS:
 - A. VERTICALLY AT THE CEILING AND FLOOR LEVELS.
 - B. HORIZONTALLY AT INTERVALS NOT EXCEEDING 10 FEET.
- FIREBLOCKING SHALL BE PROVIDED AT INTERCONNECTIONS BETWEEN CONCEALED VERTICAL STUD WALL OR PARTITION SPACES AND CONCEALED HORIZONTAL SPACES CREATED BY AN ASSEMBLY OF FLOOR JOISTS OR TRUSSES, AND BETWEEN CONCEALED VERTICAL AND HORIZONTAL SPACES SUCH AS OCCUR AT SOFFITS, DROP CEILINGS, COVE CEILINGS AND SIMILAR LOCATIONS.
- FIREBLOCKING SHALL BE PROVIDED IN CONCEALED SPACES BETWEEN STAIR STRINGERS AT THE TOP AND BOTTOM OF THE RUN, ENCLOSED SPACES UNDER STAIRS SHALL ALSO COMPLY WITH FBC04 SECTION 1019.1.5.
- CEILING AND FLOOR OPENINGS, WHERE ANNULAR SPACE PROTECTION IS PROVIDED IN ACCORDANCE WITH FBC07 EXCEPTION 6, SEC. 707.2, EXCEPTION 1, SEC. 712.4.2, OR SEC. 712.4.3, FIREBLOCKING SHALL BE INSTALLED AT OPENINGS AROUND VENTS, PIPES, DUCTS, CHIMNEYS AND FIREPLACES AT CEILING AND FLOOR LEVELS, WITH AN APPROVED MATERIAL TO RESIST THE FREE PASSAGE OF FLAME AND THE PRODUCTS OF COMBUSTION. FACTORY-BUILT CHIMNEYS AND FIREPLACES SHALL BE FIREBLOCKED IN ACCORDANCE WITH UL 103 AND UL 127.
- ARCHITECTURAL TRIM: FIREBLOCKING SHALL BE INSTALLED WITHIN CONCEALED SPACES OF EXTERIOR WALL FINISH AND OTHER EXTERIOR ARCHITECTURAL ELEMENTS WHERE PERMITTED TO BE OF COMBUSTIBLE CONSTRUCTION AS SPECIFIED IN FBC04, SEC. 1406 OR WHERE ERECTED WITH COMBUSTIBLE FRAMES, AT MAXIMUM INTERVALS OF 20'. IF NONCONTINUOUS, SUCH ELEMENTS SHALL HAVE CLOSED ENDS, WITH AT LEAST 4" OF SEPARATION BETWEEN SECTIONS. FIREBLOCKING SHALL NOT BE REQUIRED WHERE INSTALLED ON NONCOMBUSTIBLE FRAMING AND THE FACE OF THE EXTERIOR WALL FINISH EXPOSED TO THE CONCEALED SPACE IS COVERED BY ONE OF THE FOLLOWING MATERIALS:
 - A. ALUMINUM HAVING A MINIMUM THICKNESS OF 0.019".
 - B. CORROSION-RESISTANT STEEL HAVING A BASE METAL THICKNESS NOT LESS THAN 0.016" AT ANY POINT.
 - C. OTHER APPROVED NONCOMBUSTIBLE MATERIALS.
- WHERE WOOD SLEEPERS ARE USED FOR LAYING WOOD FLOORING ON MASONRY OR CONCRETE FIRE-RESISTANCE-RATED FLOORS, THE SPACE BETWEEN THE FLOOR SLAB AND THE UNDERSIDE OF THE WOOD FLOORING SHALL BE FILLED WITH AN APPROVED MATERIAL TO RESIST THE FREE PASSAGE OF FLAME AND PRODUCTS OF COMBUSTION OR FIREBLOCKED IN SUCH A MANNER THAT THERE WILL BE NO OPEN SPACES UNDER THE FLOORING THAT WILL EXCEED 100 SF IN AREA AND SUCH SPACE SHALL BE FILLED SOLIDLY UNDER PERMANENT PARTITIONS SO THAT THERE IS NO COMMUNICATION UNDER THE FLOORING BETWEEN ADJOINING ROOMS.

- FIREBLOCKING MATERIALS:
- 2" NOMINAL LUMBER OR TWO THICKNESSES OF 1" NOMINAL LUMBER WITH BROKEN LAP JOINTS OR ONE THICKNESS OF 0.719" WOOD STRUCTURAL PANEL WITH JOINTS BACKED BY 0.719" WOOD STRUCTURAL PANEL OR ONE THICKNESS OF 0.75" PARTICLEBOARD WITH JOINTS BACKED BY 0.75" PARTICLEBOARD, GYPSUM BOARD, CEMENT FIBER BOARD, BATTS OR BLANKETS OF MINERAL WOOL OR GLASS FIBER OR OTHER APPROVED MATERIALS INSTALLED IN SUCH A MANNER AS TO BE SECURELY RETAINED IN PLACE SHALL BE PERMITTED AS AN ACCEPTABLE FIREBLOCK. BATTS OR BLANKETS OF MINERAL OR GLASS FIBER OR OTHER APPROVED NONRIGID MATERIALS SHALL BE PERMITTED FOR COMPLIANCE WITH THE 10" HORIZONTAL FIREBLOCKING IN WALLS CONSTRUCTED USING PARALLEL ROWS OF STUDS OR STAGGERED STUDS.

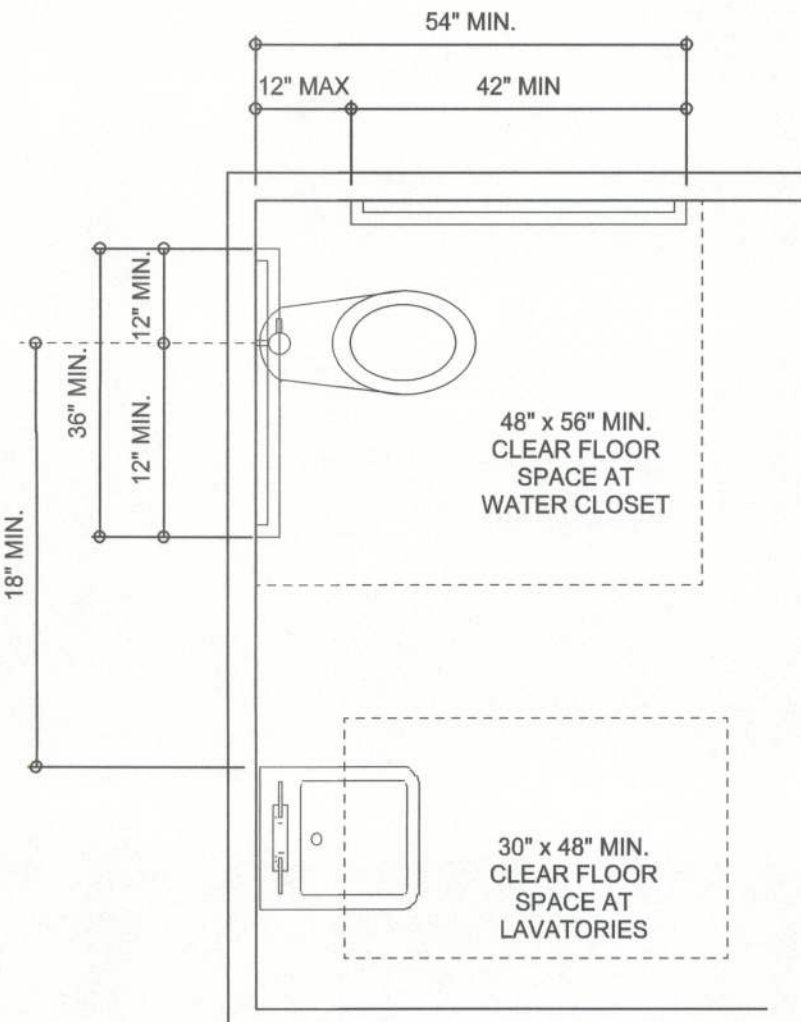
LOOSE-FILL INSULATION MATERIAL SHALL NOT BE USED AS A FIREBLOCK UNLESS SPECIFICALLY TESTED IN THE FORM AND MANNER INTENDED FOR USE TO DEMONSTRATE ITS ABILITY TO REMAIN IN PLACE AND TO RETARD THE SPREAD OF FIRE AND HOT GASES. THE INTEGRITY OF FIREBLOCKS SHALL BE MAINTAINED.



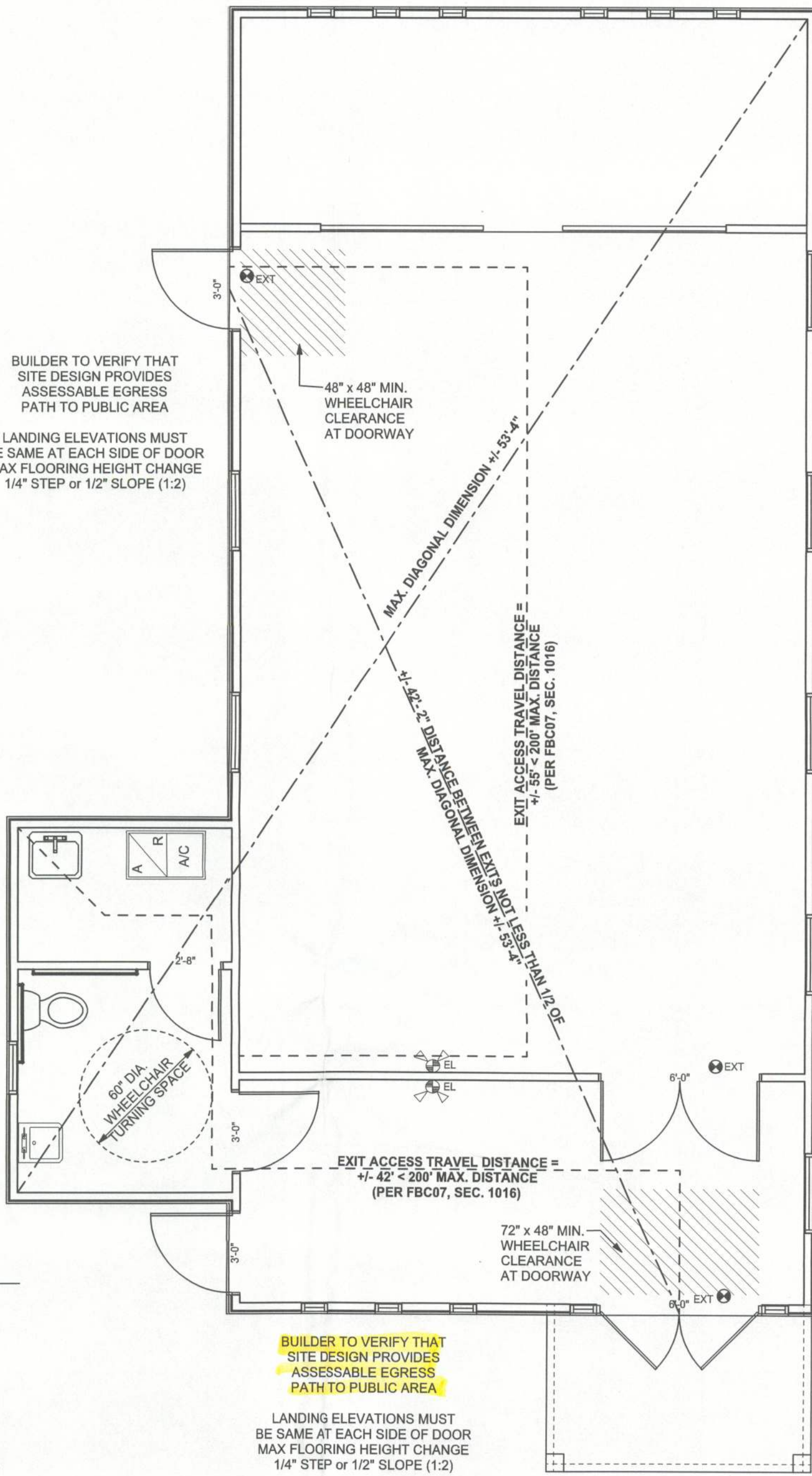
WATER CLOSET CLEARANCES
NOT TO SCALE



LAVATORY CLEARANCES
NOT TO SCALE



TOILET ROOM LAYOUT DETAIL



LIFE SAFETY KEY

- EMERGENCY LIGHT
- LIGHTED EXIT SIGN
- SMOKE DETECTOR
- FIRE EXTINGUISHER

LIFE SAFETY / ACCESSIBILITY LAYOUT

SCALE: 1/4" = 1'-0"

DRAFTSTOP REQUIREMENTS

(PER FBC07 SEC. 717.3-717.4)

DRAFTSTOPPING IN FLOORS:

DRAFTSTOPPING SHALL BE INSTALLED SO THAT HORIZONTAL FLOOR AREAS DO NOT EXCEED 1,000 SF. (DRAFTSTOPPING IS NOT REQUIRED IN BUILDINGS EQUIPPED THROUGHOUT WITH AN AUTOMATIC SPRINKLER SYSTEM.)

DRAFTSTOPPING IN ATTICS:

- IN COMBUSTIBLE CONSTRUCTION DRAFTSTOPPING SHALL BE INSTALLED IN ATTICS AND CONCEALED ROOF SPACES, SUCH THAT ANY HORIZONTAL AREA DOES NOT EXCEED 3,000 SF. (DRAFTSTOPPING IS NOT REQUIRED IN ATTIC THROUS EQUIPPED THROUGHTOUT WITH AN AUTOMATIC SPRINKLER SYSTEM.)
- OPENINGS IN THE PARTITIONS SHALL BE PROTECTED BY SELF-CLOSING DOORS WITH AUTOMATIC LATCHES CONSTRUCTED AS REQUIRED FOR THE PARTITIONS.

DRAFTSTOPPING MATERIALS:

DRAFTSTOPPING MATERIALS SHALL NOT BE LESS THAN 0.5" GYPSUM BOARD, 0.375" WOOD STRUCTURAL PANEL, 0.375" PARTICLEBOARD OR OTHER APPROVED MATERIALS ADEQUATELY SUPPORTED. THE INTEGRITY OF DRAFTSTOPS SHALL BE MAINTAINED.

ACCESSIBLE RAMP REQUIREMENTS

(SLOPES GREATER THAN 1:20 SHALL BE CONSIDERED A RAMP)

- MAX. SLOPE = 1:12
MAX RISE FOR ANY RUN = 30"
MIN. CLEAR WIDTH = 44"
MAX. CROSS SLOPE = 1:50
- LANDINGS: RAMPS MUST HAVE LEVEL LANDINGS AT TOP AND BOTTOM OF EACH RUN. ALL LANDINGS MUST BE AT LEAST AS WIDE AS THE RAMP, AND NOT LESS THAN 60" AT TOP & 72" AT BOTTOM OF STRAIGHT LEVEL CLEARANCE. IF RAMP CHANGES DIRECTION A MIN LANDING OF 60" x 60" IS REQUIRED.
 - HANDRAILS: IF RAMP RISE IS GRATER THAN 6" OR HORIZONTAL PROJECTION GREATER THAN 72" IT MUST HAVE CONTINUOUS HANDRAILS ON BOTH SIDES MOUNTED BETWEEN 34" - 38" ABOVE RAMP SURFACES.
 - EDGE PROTECTION: RAMPS & LANDINGS WITH DROP-OFFS SHALL HAVE CURBS, WALLS, RAILINGS, OR PROJECTED SURFACES.
 - CURBS MUST BE A MIN. OF 2" HIGH.
 - APPROACHES TO OUTDOOR RAMPS MUST NOT ACCUMULATE WATER

MEANS OF EGRESS ILLUMINATION REQUIREMENTS

(PER FBC07 SEC. 1006.1 - 1006.3.9)

ILLUMINATION OF MEANS OF EGRESS SHALL BE PROVIDED IN ACCORDANCE WITH THIS SECTION FOR EVERY BUILDING AND STRUCTURE. FOR THE PURPOSES OF THIS REQUIREMENT, EXIT ACCESS SHALL INCLUDE ONLY DESIGNATED STAIRS, AISLES, CORRIDORS, RAMPS, ESCALATORS, RAMPS, AND PASSAGEWAYS LEADING TO AN EXIT. FOR THE PURPOSES OF THIS REQUIREMENT, EXIT DISCHARGE SHALL INCLUDE ONLY DESIGNATED STAIRS, AISLES, CORRIDORS, RAMPS, ESCALATORS, WALKWAYS AND EXIT PASSAGEWAYS LEADING TO A PUBLIC WAY.

1. WHEN APPROVED BY THE BUILDING OFFICIAL, ILLUMINATION OF MEANS OF EGRESS SHALL NOT BE REQUIRED IN INDUSTRIAL AND STORAGE OCCUPANCIES THAT ARE OCCUPIED ONLY DURING DAYLIGHT HOURS, WITH SKYLIGHTS OR WINDOWS ARRANGED TO PROVIDE THE REQUIRED LEVEL OF ILLUMINATION ON ALL PORTIONS OF THE MEANS OF EGRESS DURING THESE HOURS.
2. ASSEMBLY OCCUPANCY PRIVATE PARTY TENTS OF 1,200 SQUARE FEET (111 M2) OR LESS SHALL NOT BE REQUIRED TO PROVIDE ILLUMINATION OF MEANS OF EGRESS.
3. OPEN STRUCTURES SHALL NOT BE REQUIRED TO PROVIDE ILLUMINATION OF MEANS OF EGRESS.
4. TOWERS OCCUPIED BY NOT MORE THAN THREE PERSONS SHALL NOT BE REQUIRED TO PROVIDE ILLUMINATION OF MEANS OF EGRESS.

ILLUMINATION OF MEANS OF EGRESS SHALL BE CONTINUOUS DURING THE TIME THAT THE CONDITIONS OF OCCUPANCY REQUIRE THAT THE MEANS OF EGRESS BE AVAILABLE FOR USE. ARTIFICIAL LIGHTING SHALL BE EMPLOYED AT SUCH PLACES AND FOR SUCH PERIODS OF TIME AS REQUIRED TO MAINTAIN THE ILLUMINATION TO THE MINIMUM CRITERIA VALUES HEREIN SPECIFIED. EXCEPTIONS: AUTOMATIC LIGHTING SWITCHES SHALL BE PERMITTED WITHIN THE MEANS OF EGRESS, PROVIDED THAT SWITCH CONTROLLERS ARE EQUIPPED FOR FAIL-SAFE OPERATION, ILLUMINATION TIMERS ARE SET FOR A MINIMUM 15-MINUTE DURATION AND THE MOTION SENSOR IS ACTIVATED BY ANY OCCUPANT MOVEMENT IN THE AREA SERVED BY THE LIGHTING UNITS.

THE FLOORS AND OTHER WALKING SURFACES WITHIN AN EXIT AND WITHIN THE PORTIONS OF THE EXIT ACCESS AND EXIT DISCHARGE DESIGNATED IN SECTION 1006.1.1 SHALL BE ILLUMINATED TO VALUES OF AT LEAST 1 FOOTCANDLE (10 LUX) MEASURED AT THE FLOOR, DURING CONDITIONS OF STAIR USE, THE MINIMUM ILLUMINATION FOR NEW STAIRS SHALL BE AT LEAST 108 LUX (10 FOOT-CANDLES) MEASURED AT THE WALKING SURFACE. EXCEPTION: IN ASSEMBLY OCCUPANCIES, THE ILLUMINATION OF THE FLOORS OF EXIT ACCESS SHALL BE AT LEAST 0.2 FOOTCANDLE (2 LUX) DURING PERIODS OF PERFORMANCES OR PROJECTIONS INVOLVING DIRECTED LIGHT.

REQUIRED ILLUMINATION SHALL BE ARRANGED SO THAT THE FAILURE OF ANY SINGLE LIGHTING UNIT WILL NOT RESULT IN AN ILLUMINATION LEVEL IN ANY DESIGNATED AREA OF LESS THAN 0.2 FOOTCANDLE (2 LUX).

THE EQUIPMENT OR UNITS INSTALLED TO MEET THE REQUIREMENTS OF SECTION 1006.3 SHALL BE PERMITTED ALSO TO SERVE THE FUNCTION OF ILLUMINATION OF MEANS OF EGRESS, PROVIDED THAT ALL REQUIREMENTS OF SECTION 1006.1 FOR SUCH ILLUMINATION ARE MET.

SOURCES OF ILLUMINATION

- ILLUMINATION OF MEANS OF EGRESS SHALL BE FROM A SOURCE OF REASONABLY ENSURED RELIABILITY.
- BATTERY-OPERATED ELECTRIC LIGHTS AND OTHER TYPES OF PORTABLE LAMPS OR LANTERNS SHALL NOT BE USED FOR PRIMARY ILLUMINATION OF MEANS OF EGRESS. BATTERY-OPERATED ELECTRIC LIGHTS SHALL BE PERMITTED TO BE USED AS AN EMERGENCY SOURCE TO THE EXTENT PERMITTED UNDER SECTION 1006.2.3.4.

EMERGENCY LIGHTING AND STANDBY POWER

- EMERGENCY LIGHTING FACILITIES FOR MEANS OF EGRESS SHALL BE PROVIDED IN ACCORDANCE WITH THIS SECTION FOR THE FOLLOWING:
 1. EVERY BUILDING OR STRUCTURE WHERE REQUIRED IN TABLE 1006.
 2. WINDOWLESS AND UNDERGROUND STRUCTURES.
 3. HIGH-RISE STRUCTURES.
 4. AT DOORS EQUIPPED WITH DELAYED EGRESS LOCKS.
- THE STAIR SHAFT AND VESTIBULE OF SMOKEPROOF ENCLOSURES.
- A STANDBY GENERATOR THAT IS INSTALLED FOR THE SMOKEPROOF ENCLOSURE MECHANICAL VENTILATION EQUIPMENT SHALL BE PERMITTED TO BE USED FOR SUCH STAIR SHAFT AND VESTIBULE SUPPLY.
- FOR THE PURPOSES OF THIS REQUIREMENT, EXIT ACCESS SHALL INCLUDE ONLY DESIGNATED STAIRS, AISLES, CORRIDORS, RAMPS, ESCALATORS AND PASSAGEWAYS LEADING TO AN EXIT. FOR THE PURPOSES OF THIS REQUIREMENT, EXIT DISCHARGE SHALL INCLUDE ONLY DESIGNATED STAIRS, RAMPS, AISLES, WALKWAYS AND ESCALATORS LEADING TO A PUBLIC WAY.

1. TOWERS OCCUPIED BY THREE OR FEWER PERSONS SHALL BE EXEMPT FROM EMERGENCY LIGHTING REQUIREMENTS.
2. LOCATIONS IN TOWERS NOT ROUTINELY INHABITED BY HUMANS SHALL BE EXEMPT FROM EMERGENCY LIGHTING REQUIREMENTS.
3. WHEN APPROVED BY THE BUILDING OFFICIAL, ILLUMINATION OF MEANS OF EGRESS SHALL NOT BE REQUIRED IN TOWERS THAT ARE OCCUPIED ONLY DURING DAYLIGHT HOURS, WITH WINDOWS ARRANGED TO PROVIDE THE REQUIRED LEVEL OF ILLUMINATION ON ALL PORTIONS OF THE MEANS OF EGRESS DURING THESE HOURS.
4. WATER-SURROUNDED STRUCTURES IN LOCATIONS NOT ROUTINELY INHABITED BY HUMANS SHALL BE EXEMPT FROM EMERGENCY LIGHTING REQUIREMENTS.
5. WHEN APPROVED BY THE BUILDING OFFICIAL, ILLUMINATION OF MEANS OF EGRESS SHALL NOT BE REQUIRED IN WATER-SURROUNDED STRUCTURES THAT ARE OCCUPIED ONLY DURING DAYLIGHT HOURS, WITH WINDOWS ARRANGED TO PROVIDE THE REQUIRED LEVEL OF ILLUMINATION ON ALL PORTIONS OF THE MEANS OF EGRESS DURING THESE HOURS.

WHERE MAINTENANCE OF ILLUMINATION DEPENDS UPON CHANGING FROM ONE ENERGY SOURCE TO ANOTHER, A DELAY OF NOT MORE THAN 10 SECONDS SHALL BE PERMITTED.

PERFORMANCE OF SYSTEM

- EMERGENCY ILLUMINATION SHALL BE PROVIDED FOR A PERIOD OF HOURS 1½ IN THE EVENT OF FAILURE OF NORMAL LIGHTING. EMERGENCY LIGHTING FACILITIES SHALL BE ARRANGED TO PROVIDE INITIAL ILLUMINATION THAT IS AT LEAST AN AVERAGE OF 1 FOOTCANDLE (10 LUX) AND A MINIMUM AT ANY POINT OF 0.1 FOOTCANDLE (1 LUX) MEASURED ALONG THE PATH OF EGRESS AT FLOOR LEVEL. ILLUMINATION LEVELS SHALL BE PERMITTED TO DECLINE TO 0.6 FOOTCANDLE (6 LUX) AVERAGE AND A MINIMUM AT ANY POINT OF 0.08 FOOTCANDLE (0.8 LUX) AT THE END OF THE EMERGENCY LIGHTING TIME DURATION. A MAXIMUM-TO-MINIMUM ILLUMINATION UNIFORMITY RATIO OF 40:1 SHALL NOT BE EXCEEDED.

- THE EMERGENCY LIGHTING SYSTEM SHALL BE ARRANGED TO PROVIDE THE REQUIRED ILLUMINATION AUTOMATICALLY IN THE EVENT OF ANY INTERRUPTION OF NORMAL LIGHTING, SUCH AS ANY FAILURE OF PUBLIC UTILITY OR OTHER OUTSIDE ELECTRICAL POWER SUPPLY; OPENING OF A CIRCUIT BREAKER OR FUSE OR ANY MANUAL ACT(S), INCLUDING ACCIDENTAL OPENING OF A SWITCH CONTROLLING NORMAL LIGHTING FACILITIES.
- EMERGENCY GENERATORS PROVIDING POWER TO EMERGENCY LIGHTING SYSTEMS SHALL BE INSTALLED IN ACCORDANCE WITH NFPA 110.
- STORED ELECTRICAL ENERGY SYSTEMS WHERE REQUIRED IN THIS CODE SHALL BE INSTALLED IN ACCORDANCE WITH NFPA 110.
- BATTERY-OPERATED EMERGENCY LIGHTS SHALL USE ONLY RELIABLE TYPES OF RECHARGEABLE BATTERIES PROVIDED WITH SUITABLE FACILITIES FOR MAINTAINING THEM IN A PROPERLY CHARGED CONDITION. BATTERIES USED IN SUCH LIGHTS OR UNITS SHALL BE APPROVED FOR THEIR INTENDED USE AND SHALL COMPLY WITH CHAPTER 27 OF THE FLORIDA BUILDING CODE, BUILDING.
- THE EMERGENCY LIGHTING SYSTEM SHALL BE EITHER CONTINUOUSLY IN OPERATION OR SHALL BE CAPABLE OF REPEATED AUTOMATIC OPERATION WITHOUT MANUAL INTERVENTION.

STANDBY POWER

HIGH-RISE BUILDINGS SHALL BE PROVIDED WITH CLASS 1, TYPE 60 STANDBY POWER IN ACCORDANCE WITH CHAPTER 27 OF THE FLORIDA BUILDING CODE, BUILDING AND NFPA 110. THE STANDBY POWER SYSTEM SHALL HAVE A CAPACITY AND RATING SUFFICIENT TO SUPPLY ALL REQUIRED EQUIPMENT. SELECTIVE LOAD PICKUP AND LOAD SHEDDING SHALL BE PERMITTED IN ACCORDANCE WITH CHAPTER 27 OF THE FLORIDA BUILDING CODE, BUILDING. THE STANDBY POWER SYSTEM SHALL BE CONNECTED TO THE FOLLOWING:

1. EMERGENCY LIGHTING SYSTEM.
 2. AT LEAST ONE ELEVATOR SERVING ALL FLOORS AND TRANSFERABLE TO ANY ELEVATOR.
 3. MECHANICAL EQUIPMENT FOR SMOKEPROOF ENCLOSURES.
- (SEE SECTION 403 FOR ADDITIONAL REQUIREMENTS FOR STANDBY POWER IN HIGH-RISE STRUCTURES.)

EXIT SIGNS

EXITS SHALL BE MARKED BY AN APPROVED SIGN READILY VISIBLE FROM ANY DIRECTION OF EXIT ACCESS. EVERY EXIT SIGN SHALL BE SUITABLY ILLUMINATED BY A RELIABLE LIGHT SOURCE. EXTERNALLY AND INTERNALLY ILLUMINATED SIGNS SHALL BE VISIBLE IN BOTH NORMAL AND EMERGENCY LIGHTING.

EXCEPTION: MAIN EXTERIOR EXIT DOORS THAT OBVIOUSLY AND CLEARLY ARE IDENTIFIABLE AS EXITS.

NEW SIGN PLACEMENT SHALL BE SUCH THAT NO POINT IN AN EXIT ACCESS CORRIDOR IS IN EXCESS OF THE RATED VIEWING DISTANCE OR 100 FEET (30 M) WHICHEVER IS LESS, FROM THE NEAREST SIGN.

EVERY REQUIRED SIGN SHALL BE LOCATED AND OF SUCH SIZE, DISTINCTIVE COLOR AND DESIGN AS TO BE READILY VISIBLE AND SHALL PROVIDE CONTRAST WITH INTERIOR FINISH OR OTHER SIGNS. NO EQUIPMENT THAT IMPAIRS VISIBILITY OF AN EXIT SIGN SHALL BE PERMITTED, NOR SHALL THERE BE ANY BRIGHTLY ILLUMINATED SIGN OR OBJECT IN OR NEAR THE LINE OF VISION OF THE REQUIRED EXIT SIGN OR SUCH A CHARACTERISTIC THAT DETRACTS ATTENTION FROM THE EXIT SIGN. FLOOR PROXIMITY SIGNS, WHERE REQUIRED, SHALL BE IN ACCORDANCE WITH SECTION 1006.3.8.2 OR 1006.3.8.3.

EXIT STAIR DOOR OR TACTILE SIGNAGE.

TACTILE SIGNAGE STATING "EXIT" AND COMPLYING WITH ICC/ANSI A117.1, AMERICAN NATIONAL STANDARD FOR ACCESSIBLE AND USABLE BUILDINGS AND FACILITIES, SHALL BE INSTALLED ADJACENT TO THE LATCH SIDE OF THE DOOR 60 INCHES (1524 MM) ABOVE THE FINISHED FLOOR TO THE CENTER LINE OF THE SIGN.

EXTERNALLY ILLUMINATED SIGNS SHALL HAVE THE WORD "EXIT" OR OTHER APPROPRIATE WORDING IN PLAINLY LEGIBLE LETTERS NOT LESS THAN 6 INCHES (152 MM) HIGH WITH THE PRINCIPAL STROKES OF LETTERS NOT LESS THAN ¼ INCHES (19 MM) WIDE. THE WORD "EXIT" SHALL HAVE LETTERS OF A WIDTH NOT LESS THAN 2 INCHES (51 MM), EXCEPT THE LETTER "I" AND THE MINIMUM SPACING BETWEEN LETTERS SHALL BE NOT LESS THAN 38 INCHES (10 MM). SIGNS LARGER THAN THE MINIMUM ESTABLISHED IN THIS PARAGRAPH SHALL HAVE LETTER WIDTHS, STROKES AND SPACING IN PROPORTION TO THEIR HEIGHT. EXTERNALLY ILLUMINATED SIGNS SHALL BE ILLUMINATED BY NOT LESS THAN 5 FOOTCANDLES (50 LUX) AT THE ILLUMINATED SURFACE AND SHALL HAVE A CONTRAST RATIO OF NOT LESS THAN 3:1.

1. MARKING REQUIRED BY SECTION 1009.5.3.
2. GROUP R3 AND GROUP R4 (SMALL FACILITY) OCCUPANCIES.
- INTERNALLY ILLUMINATED SIGNS SHALL BE LISTED IN ACCORDANCE WITH UL 924, STANDARD FOR SAFETY EMERGENCY LIGHTING POWER EQUIPMENT. THE VISIBILITY OF AN INTERNALLY ILLUMINATED SIGN SHALL BE THE EQUIVALENT OF AN EXTERNALLY ILLUMINATED SIGN THAT EXCEPTS:

1. MARKING REQUIRED BY SECTION 1009.5.3.
2. SIGNS IN COMPLIANCE WITH SECTIONS 1006.3.4 AND 1006.3.8.2.
- WHERE EMERGENCY LIGHTING FACILITIES ARE REQUIRED BY SECTION 1006.2, THE EXIT SIGNS SHALL BE ILLUMINATED BY THE EMERGENCY LIGHTING FACILITIES. THE LEVEL OF ILLUMINATION OF THE EXIT SIGN SHALL BE AT THE LEVELS PROVIDED IN ACCORDANCE WITH SECTION 1006.3.5 FOR THE REQUIRED EMERGENCY LIGHTING TIME DURATION. EXCEPTION: IN GROUP R3, 1, BUT SHALL BE PERMITTED TO DECLINE TO 60 PERCENT OF THE ILLUMINATION LEVEL AT THE END OF THE EMERGENCY LIGHTING TIME DURATION.
- WHERE THE DIRECTION OF TRAVEL TO REACH THE NEAREST EXIT IS NOT APPARENT, A DIRECTIONAL SIGN COMPLYING WITH SECTIONS 1006.3.5 OR 1006.3.6 READING "EXIT" OR A SIMILAR DESIGNATION WITH A DIRECTIONAL INDICATOR SHOWING THE DIRECTION OF TRAVEL SHALL BE PLACED IN EVERY LOCATION. DIRECTIONAL SIGNS SHALL BE LISTED.
- THE DIRECTIONAL INDICATOR SHALL BE LOCATED OUTSIDE OF THE "EXIT" LEGEND, NOT LESS THAN 3/8 INCHES (10 MM) FROM ANY LETTER. THE DIRECTIONAL INDICATOR SHALL BE OF A CHEVRON TYPE AND SHALL BE IDENTIFIABLE AS A DIRECTIONAL INDICATOR AT A MINIMUM DISTANCE OF 40 FEET (12.2 M). A DIRECTIONAL INDICATOR LARGER THAN THE MINIMUM ESTABLISHED IN THIS SECTION SHALL BE PROPORTIONATELY INCREASED IN HEIGHT, WIDTH AND STROKE. THE DIRECTIONAL INDICATORS SHALL BE LOCATED AT THE END OF THE SIGN FOR THE DIRECTION INDICATED.
- WHERE FLOOR PROXIMITY EXIT SIGNS ARE REQUIRED, EXIT SIGNS SHALL BE PLACED NEAR THE FLOOR LEVEL. IN ADDITION TO THOSE SIGNS REQUIRED FOR DOORS OR CORRIDORS, THESE SIGNS SHALL BE ILLUMINATED IN ACCORDANCE WITH SECTION 1006.3, EXTERNALLY ILLUMINATED SIGNS SHALL BE SIZED IN ACCORDANCE WITH SECTION 1006.3.5. THE BOTTOM OF THE SIGN SHALL BE AT LEAST 6 INCHES (152 MM) AND NO MORE THAN 8 INCHES (203 MM) ABOVE THE FLOOR. FOR EXIT DOORS, THE SIGN SHALL BE MOUNTED ON THE DOOR OR ADJACENT TO THE DOOR WITH THE NEAREST EDGE OF THE SIGN WITHIN 4 INCHES (102 MM) OF THE DOOR FRAME.
- WHERE FLOOR PROXIMITY EGRESS PATH MARKING IS REQUIRED, A LISTED AND APPROVED FLOOR PROXIMITY EGRESS PATH MARKING SYSTEM THAT IS INTERNALLY ILLUMINATED SHALL BE INSTALLED WITHIN 18 INCHES (457 MM) OF THE FLOOR. THE SYSTEM SHALL PROVIDE A VISIBLE DELINEATION OF THE PATH OF TRAVEL ALONG THE DESIGNATED EXIT ACCESS AND SHALL BE ESSENTIALLY CONTINUOUS, EXCEPT AS INTERRUPTED BY DOORWAYS, HALLWAYS, CORRIDORS OR OTHER SUCH ARCHITECTURAL FEATURES. THE SYSTEM SHALL OPERATE CONTINUOUSLY OR AT ANY TIME THE BUILDING FIRE ALARM SYSTEM IS ACTIVATED. THE ACTIVATION, DURATION AND CONTINUITY OF OPERATION OF THE SYSTEM SHALL BE IN ACCORDANCE WITH SECTION 1006.2.
- SIGNS INSTALLED AS PROJECTIONS FROM A WALL OR CEILING WITHIN THE MEANS OF EGRESS SHALL PROVIDE VERTICAL CLEARANCE NO LESS THAN 60 INCHES (1534 MM) FROM THE WALKING SURFACE.

LIFE SAFETY NOTE:

It is contractor / owner's responsibility to request life safety review by the fire marshal. All life safety requirements are to be as specified by the fire marshal. Emergency lighting and exit signs shall be provided as directed by the fire marshal and shall be wired per nec 700-12f. Emergency lighting and exit sign locations shown on the plans are suggestions only.

REVISIONS

SOFTPLAN
ARCHITECTURAL DESIGN SOFTWARE

ENGINEER OF RECORD: Mark Disosway,
PE No. 53915, P.O. Box 868, Lake City, FL
32056, 386-754-5419

DIMENSIONS:
Stated dimensions supersede scaled
dimensions. Refer all questions to
Mark Disosway, P.E. for resolution.
Do not proceed without clarification.

COPYRIGHTS AND PROPERTY RIGHTS:
Mark Disosway, P.E. hereby expressly reserves
its common law copyrights and property right in
these instruments of service. This document is
not to be reproduced, altered or copied in any
form or manner without first the express written
permission and consent of Mark Disosway.

CERTIFICATION: These plans and Cover
Sheet A-0, attached, comply with applicable
portions of the Florida Building Code 2007 &
2009 supplements, to the best of my knowledge
and belief.

MARK DISOSWAY
P.E. 53915
STATE OF FLORIDA
PROFESSIONAL ENGINEER

Milton Builders

Anglican Church Addition & Renovation

ADDRESS:
Lake City, Florida
Columbia County

Mark Disosway P.E.
P.O. Box 868
Lake City, Florida 32025
Phone: (386) 754 - 5419
Fax: (386) 269 - 4871
windoadengineer@bellsouth.net

PRINTED DATE:
July 19, 2011

DRAWN BY: CHECKED BY:
Evan Beamsley

FINALES DATE:
2011-07-19

JOB NUMBER:
1106111

DRAWING NUMBER

2

OF 8 SHEETS