

Q.PEAK DUO BLK-G6+ / AC

Q.ANTUM DUO SOLAR MODULE
WITH INTEGRATED MICROINVERTER



Q.ANTUM TECHNOLOGY: LOW LEVELIZED COST OF ELECTRICITY

Higher yield per surface area, lower BOS costs, higher power classes, and an efficiency rate of up to 19.5%.



INNOVATIVE ALL-WEATHER TECHNOLOGY

Optimal yields, whatever the weather with excellent low-light and temperature behavior.



ENDURING HIGH PERFORMANCE

Long-term yield security with Anti LID Technology, Anti PID Technology¹, Hot-Spot Protect, Traceable Quality Tra.Q™.



EXTREME WEATHER RATING

High-tech aluminum alloy frame, certified for high snow (5400Pa) and wind loads (4000Pa).



A RELIABLE INVESTMENT

Inclusive 25-year product warranty and 25-year linear performance warranty².



STATE OF THE ART MODULE TECHNOLOGY

Q.ANTUM DUO Technology and the integrated high-powered Enphase IQ 7+ Microinverter achieving maximum system efficiency.



RELIABLE ENERGY MONITORING

Seamless management with the intelligent Enphase Enlighten™ monitoring system.



RAPID SHUTDOWN COMPLIANT

Built-in rapid shutdown with no additional components required.



THE IDEAL SOLUTION FOR:



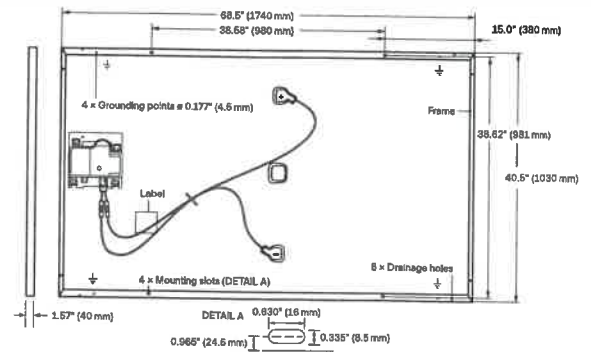
Rooftop arrays on
residential buildings

¹ APT test conditions according to IEC/TS 62804-1:2015, method B (-1500V, 168h)

² See data sheet on rear for further information

MECHANICAL SPECIFICATIONS

Format	68.5 × 40.6 × 1.57 in (including frame) (1740 × 1030 × 40 mm)
Weight	47.2 lbs (21.4 kg)
Front Cover	0.13 in (3.2 mm) thermally pre-stressed glass with anti-reflection technology
Back Cover	Composite film
Frame	Black anodized aluminum
Cell	6 × 20 monocrystalline Q.ANTUM solar half cells
Junction Box	2.09-3.98 × 1.26-2.36 × 0.59-0.71 in (53-101 × 32-60 × 15-18 mm), Protection class IP67, with bypass diodes
Cable	4 mm ² Solar cable; (+) ≥ 45.3 in (1150 mm), (-) ≥ 33.5 in (850 mm)
Connector	Stäubli MC4; IP68



AC OUTPUT ELECTRICAL CHARACTERISTICS

IQ7PLUS-72-ACM-US OR IQ7PLUS-72-E-ACM-US

Peak Output Power	[VA]	295	AC Short Circuit Fault Current over 3 Cycles	5.8 Arms
Max. Continuous Output Power	[VA]	290	Max. Units per 20 A (L-L) Branch Circuit	13
Nominal (L-L) Voltage / Range	[V]	240/211~264	Overvoltage Class AC Port	III
Max. Continuous Output Current	[A]	1.21	AC Port Backfeed Current	18 mA
Nominal Frequency	[Hz]	60	Power Factor Setting	1
Extended Frequency Range	[Hz]	47 - 68	Power Factor (adjustable)	0.85 leading ... 0.85 lagging

DC ELECTRICAL CHARACTERISTICS

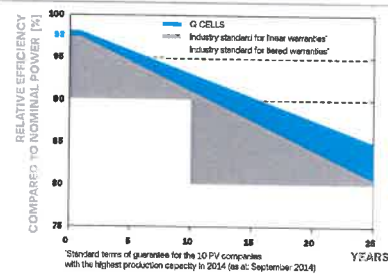
POWER CLASS 340

MINIMUM PERFORMANCE AT STANDARD TEST CONDITIONS, STC¹ (POWER TOLERANCE +5 W / -0 W)

Min. Power at MPP ¹	P _{MPP}	[W]	340	Min. Current at MPP	I _{MPP}	[A]	10.02
Min. Short Circuit Current ¹	I _{SC}	[A]	10.52	Min. Voltage at MPP	V _{MPP}	[V]	33.94
Min. Open Circuit Voltage ¹	V _{OC}	[V]	40.66	Min. Efficiency ¹	η	[%]	≥19.0

¹ Measurement tolerances P_{MPP} ± 3%; I_{SC}; V_{OC} ± 5% at STC: 1000 W/m², 25 ± 2°C, AM 1.5 according to IEC 60904-3

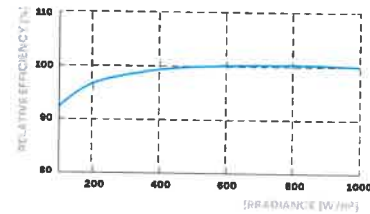
Q CELLS PERFORMANCE WARRANTY



At least 98% of nominal power during first year. Thereafter max. 0.54% degradation per year. At least 93.1% of nominal power up to 10 years. At least 85% of nominal power up to 25 years.

All data within measurement tolerances. Full warranties in accordance with the warranty terms of the Q CELLS sales organization of your respective country.

PERFORMANCE AT LOW IRRADIANCE



Typical module performance under low irradiance conditions in comparison to STC conditions (25 °C, 1000 W/m²)

TEMPERATURE COEFFICIENTS

Temperature Coefficient of I _{SC}	α	[%/K]	+0.04	Temperature Coefficient of V _{OC}	β	[%/K]	-0.27
Temperature Coefficient of P _{MPP}	γ	[%/K]	-0.36	Nominal Module Operating Temperature	NMOT	[°F]	109 ± 5.4 (43 ± 3 °C)

PROPERTIES FOR DC SYSTEM DESIGN

Maximum System Voltage V _{sys}	[V]	1000	PV Module Classification	Class II
Maximum Series Fuse Rating	[A DC]	20	Fire Rating based on ANSI / UL 1703	TYPE 2
Max. Design Load, Push / Pull ³	[lbs / ft ²]	75 (3600 Pa) / 55 (2667 Pa)	Permitted Module Temperature on Continuous Duty	-40 °F up to +185 °F (-40 °C up to +85 °C)
Max. Test Load, Push / Pull ³	[lbs / ft ²]	113 (5400 Pa) / 84 (4000 Pa)		

³ See Installation Manual

QUALIFICATIONS AND CERTIFICATES

Solar module: UL 1703, CE-compliant,
U.S. Patent No. 9,893,215 (solar cells);
Enphase micro inverter: UL 1741-SA, UL 62109-1,
UL1741/IEEE1547, FCC Part 15 Class B,
ICES-0003 Class B, CAN/CSA-C22.2 NO. 107.1-01,
Rapid Shutdown Compliant per NEC-2014
& 2017 & C22.1-2015



PACKAGING INFORMATION

Number of Modules per Pallet	26
Number of Pallets per Trailer (24 t)	28
Number of Pallets per 40' HC-Container (26 t)	26
Pallet Dimensions (L × W × H)	70.1 × 42.5 × 47.6 in (1780 × 1080 × 1208 mm)
Pallet Weight	1345 lbs (610 kg)

Note: Installation instructions must be followed. See the Installation and operating manual or contact our technical service department for further information on approved installation and use of this product.

Hanwha Q CELLS America Inc.

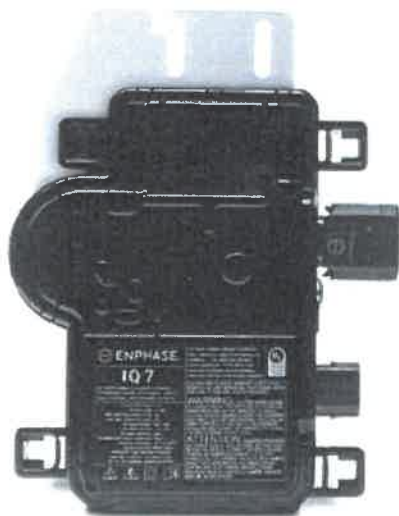
400 Spectrum Center Drive, Suite 1400, Irvine, CA 92618, USA | **TEL** +1 949 748 59 96 | **EMAIL** inquiry@us.q-cells.com | **WEB** www.q-cells.us

Enphase IQ 7 and IQ 7+ Microinverters

The high-powered smart grid-ready **Enphase IQ 7 Micro™** and **Enphase IQ 7+ Micro™** dramatically simplify the installation process while achieving the highest system efficiency.

Part of the Enphase IQ System, the IQ 7 and IQ 7+ Microinverters integrate with the Enphase IQ Envoy™, Enphase IQ Battery™, and the Enphase Enlighten™ monitoring and analysis software.

IQ Series Microinverters extend the reliability standards set forth by previous generations and undergo over a million hours of power-on testing, enabling Enphase to provide an industry-leading warranty of up to 25 years.



Easy to Install

- Lightweight and simple
- Faster installation with improved, lighter two-wire cabling
- Built-in rapid shutdown compliant (NEC 2014 & 2017)

Productive and Reliable

- Optimized for high powered 60-cell and 72-cell* modules
- More than a million hours of testing
- Class II double-insulated enclosure
- UL listed

Smart Grid Ready

- Complies with advanced grid support, voltage and frequency ride-through requirements
- Remotely updates to respond to changing grid requirements
- Configurable for varying grid profiles
- Meets CA Rule 21 (UL 1741-SA)

* The IQ 7+ Micro is required to support 72-cell modules.



To learn more about Enphase offerings, visit enphase.com



Enphase IQ 7 and IQ 7+ Microinverters

INPUT DATA (DC)	IQ7-60-2-US / IQ7-60-B-US		IQ7PLUS-72-2-US / IQ7PLUS-72-B-US	
Commonly used module pairings¹	235 W - 350 W +		235 W - 440 W +	
Module compatibility	60-cell PV modules only		60-cell and 72-cell PV modules	
Maximum input DC voltage	48 V		60 V	
Peak power tracking voltage	27 V - 37 V		27 V - 45 V	
Operating range	16 V - 48 V		16 V - 60 V	
Min/Max start voltage	22 V / 48 V		22 V / 60 V	
Max DC short circuit current (module Isc)	15 A		15 A	
Overvoltage class DC port	II		II	
DC port backfeed current	0 A		0 A	
PV array configuration	1 x 1 ungrounded array; No additional DC side protection required; AC side protection requires max 20A per branch circuit			
OUTPUT DATA (AC)	IQ 7 Microinverter		IQ 7+ Microinverter	
Peak output power	250 VA		295 VA	
Maximum continuous output power	240 VA		290 VA	
Nominal (L-L) voltage/range²	240 V / 211-264 V	208 V / 183-229 V	240 V / 211-264 V	208 V / 183-229 V
Maximum continuous output current	1.0 A (240 V)	1.15 A (208 V)	1.21 A (240 V)	1.39 A (208 V)
Nominal frequency	60 Hz		60 Hz	
Extended frequency range	47 - 68 Hz		47 - 68 Hz	
AC short circuit fault current over 3 cycles	5.8 Arms		5.8 Arms	
Maximum units per 20 A (L-L) branch circuit³	16 (240 VAC)	13 (208 VAC)	13 (240 VAC)	11 (208 VAC)
Overvoltage class AC port	III		III	
AC port backfeed current	0 A		0 A	
Power factor setting	1.0		1.0	
Power factor (adjustable)	0.7 leading ... 0.7 lagging		0.7 leading ... 0.7 lagging	
EFFICIENCY	@240 V	@208 V	@240 V	@208 V
Peak CEC efficiency	97.6 %	97.6 %	97.5 %	97.3 %
CEC weighted efficiency	97.0 %	97.0 %	97.0 %	97.0 %
MECHANICAL DATA				
Ambient temperature range	-40°C to +65°C			
Relative humidity range	4% to 100% (condensing)			
Connector type (IQ7-60-2-US & IQ7PLUS-72-2-US)	MC4 (or Amphenol H4 UTX with additional Q-DCC-5 adapter)			
Connector type (IQ7-60-B-US & IQ7PLUS-72-B-US)	Friends PV2 (MC4 intermateable). Adaptors for modules with MC4 or UTX connectors: - PV2 to MC4: order ECA-S20-S22 - PV2 to UTX: order ECA-S20-S25			
Dimensions (WxHxD)	212 mm x 175 mm x 30.2 mm (without bracket)			
Weight	1.08 kg (2.38 lbs)			
Cooling	Natural convection - No fans			
Approved for wet locations	Yes			
Pollution degree	PD3			
Enclosure	Class II double-insulated, corrosion resistant polymeric enclosure			
Environmental category / UV exposure rating	NEMA Type 5 / outdoor			
FEATURES				
Communication	Power Line Communication (PLC)			
Monitoring	Enlighten Manager and MyEnlighten monitoring options. Both options require installation of an Enphase IQ Envoy.			
Disconnecting means	The AC and DC connectors have been evaluated and approved by UL for use as the load-break disconnect required by NEC 690.			
Compliance	CA Rule 21 (UL 1741-SA) UL 62109-1, UL1741/IEEE1547, FCC Part 15 Class B, ICES-0003 Class B, CAN/CSA-C22.2 NO. 107.1-01 This product is UL Listed as PV Rapid Shut Down Equipment and conforms with NEC-2014 and NEC-2017 section 690.12 and C22.1-2015 Rule 64-218 Rapid Shutdown of PV Systems, for AC and DC conductors, when installed according manufacturer's instructions.			

1. No enforced DC/AC ratio. See the compatibility calculator at <https://enphase.com/en-us/support/module-compatibility>

2. Nominal voltage range can be extended beyond nominal if required by the utility.

3. Limits may vary. Refer to local requirements to define the number of microinverters per branch in your area.

To learn more about Enphase offerings, visit enphase.com

© 2018 Enphase Energy. All rights reserved. All trademarks or brands used are the property of Enphase Energy, Inc.
2018-05-24



RT-MINI

Self-flashing base for asphalt & metal roof-top PV mounting systems

RT-MINI is suitable for mounting any rail system with a conventional L-Foot.

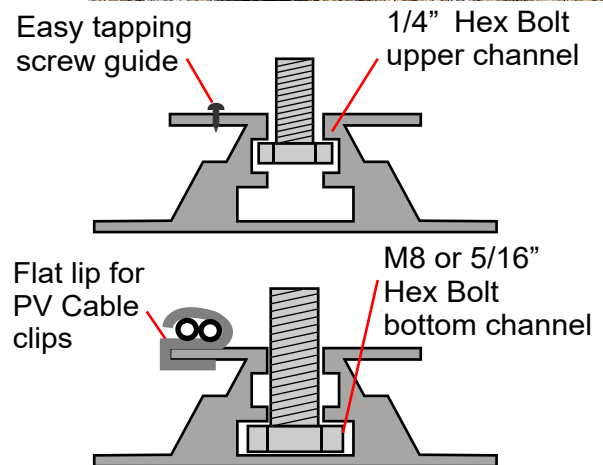


Dual bolt design: M8 or 5/16" for L-Foot & 1/4" for EMC



ICC ESR 3575

Call Now for more details
858-935-6064



Roof Tech

Smarter PV mounting solutions from top of roof to bottom line®
www.roof-tech.us info@roof-tech.us

RT-MINI

Flexible Flashing certified by the International Code Council (ICC)

Engineered to ASTM D 1761 (Standard Test Methods for Mechanical Fasteners in Wood)

Components

RT2-00-MINIBK

PAT : PENDING



MINI base : 20 ea.

Screw : 40 ea.

Extra RT-Butyl : 10 ea.

Optional item

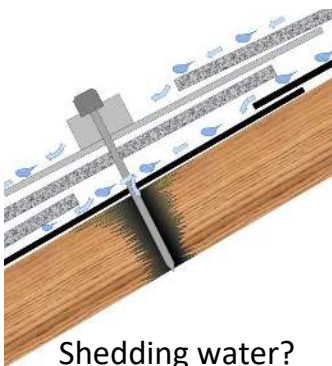
5 x 60mm Mounting screw (RT2-04-SD5-60) : 100 ea./Bag

5/16" Hex bolt, washer & nut set (RT-04-BN30SL-US) : 100 ea./Bag

RT-Butyl (RT2-04-BUTYLT) : 10 ea./Box

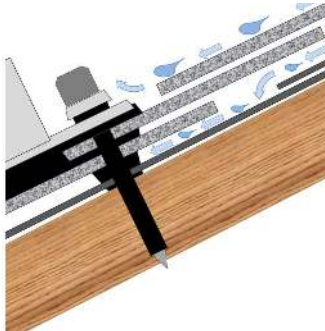
RT-Butyl is Roof Tech's flexible flashing used in 700,000 residential PV systems for the last 24 years. It is the first PV mounting system with Flexible Flashing certified by the ICC.

Metal Flashing Retrofit



Shedding water?

Flexible Flashing



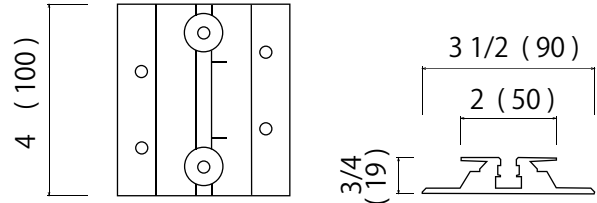
100% Waterproof

ICC ESR-3575

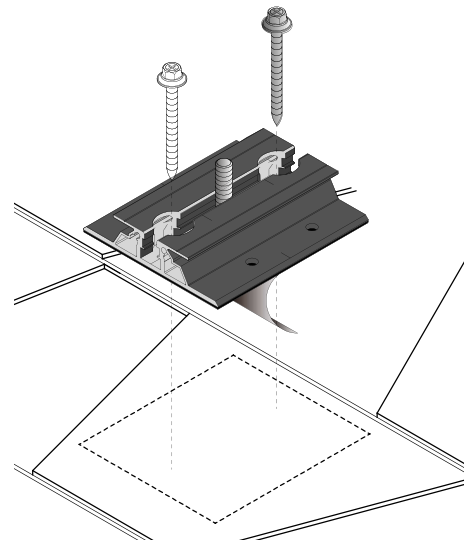
ASTM2140 testing UV testing (7500 hrs.)



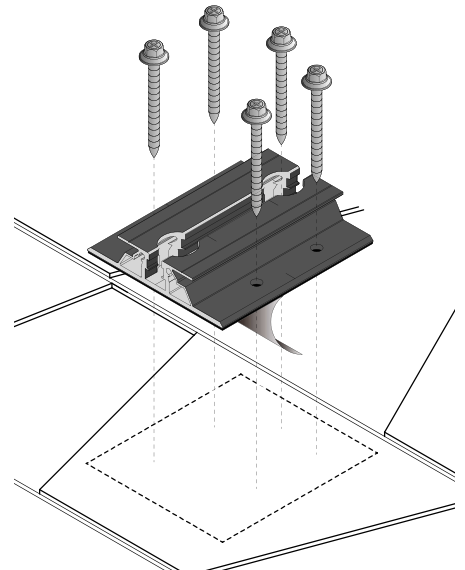
Dimensions in (mm)



Rafter installation



Deck installation



P.E. Stamped Letters available at www.roof-tech.us/support

Roof Tech Inc.

www.roof-tech.us

info@roof-tech.us

10620 Treena Street, Suite 230, San Diego, CA 92131

858.935.6064



Rev. 03-2020

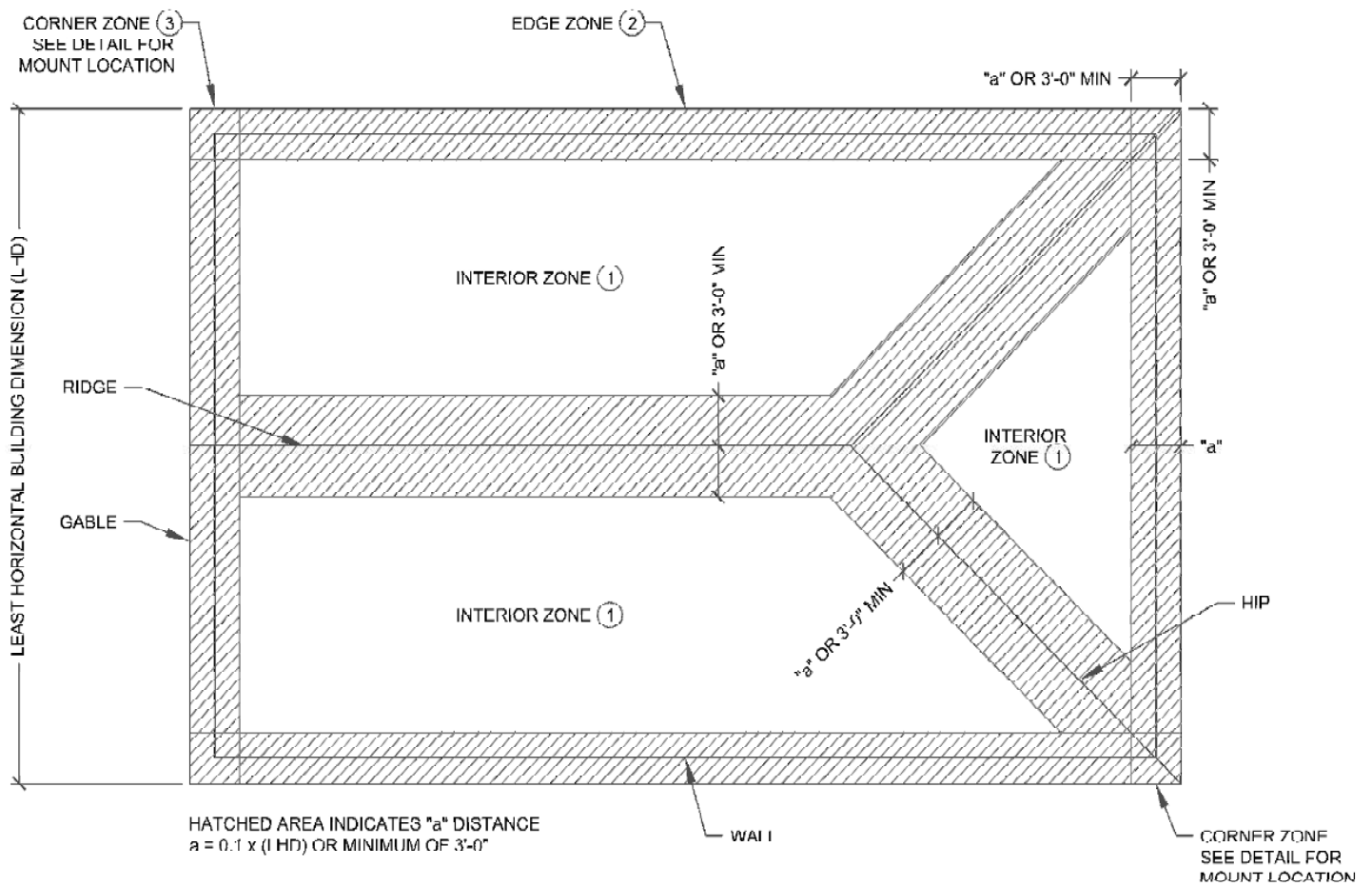


8150 Sierra College Boulevard, Suite 150, Roseville, CA 95661

T 916.961.3960 F 916.961.3965 W www.pzse.com

Experience | Integrity | Empowerment







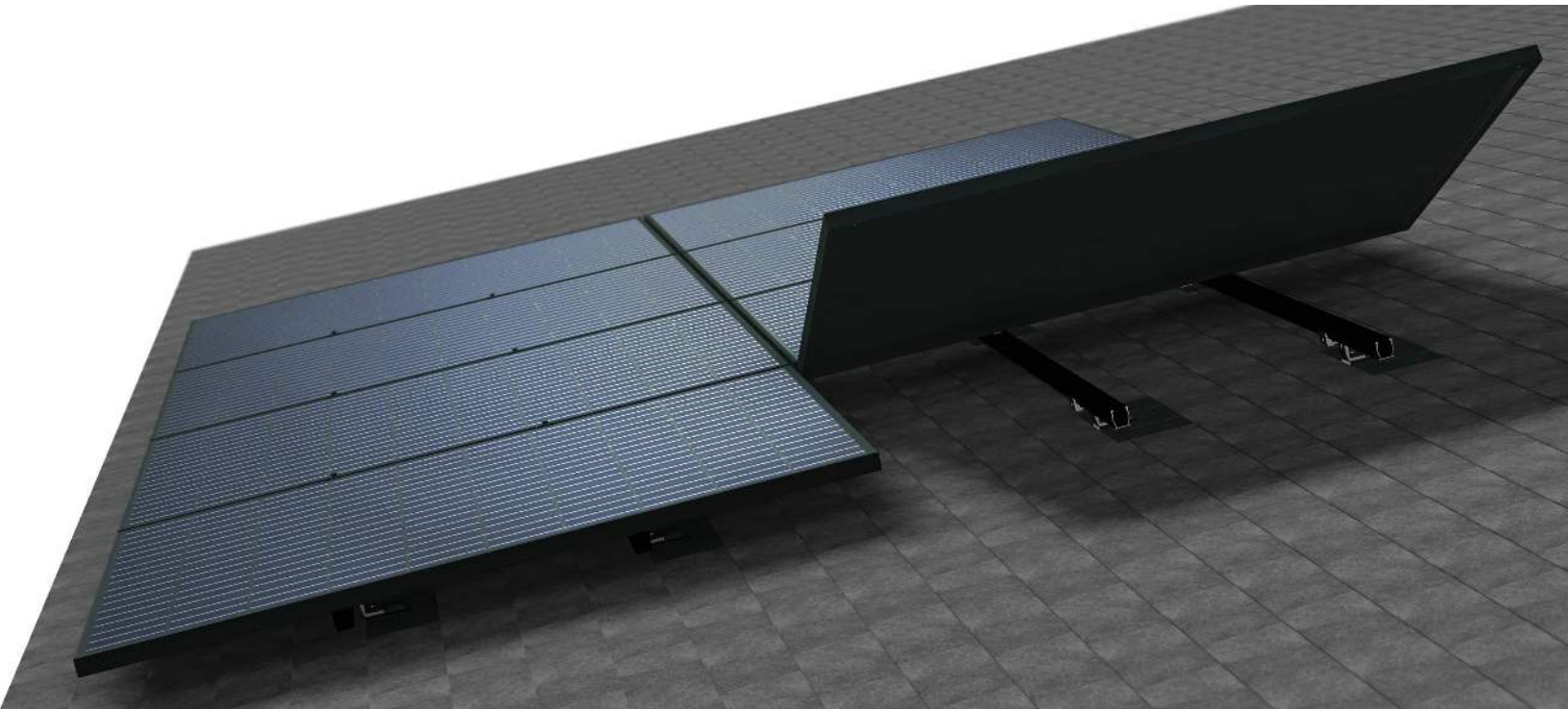


8150 Sierra College Boulevard, Suite 150, Roseville, CA 95661

T 916.961.3960 F 916.961.3965 W www.pzse.com

Experience | Integrity | Empowerment

Ultra Rail



The Ultimate Value in Rooftop Solar



Industry leading Wire
Management Solutions



Mounts available for all
roof types



An install experience
unlike any other



Compatible with all
Series 100 Module
Clamps & Accessories

Start Installing Ultra Rail Today

RESOURCES
DESIGN
WHERE TO BUY

snapnrack.com/resources
snapnrack.com/configurator
snapnrack.com/where-to-buy

The SnapNrack Ultra Rail

is a sleek, lightweight rail solution for mounting solar modules on the roof.

The Entire System is a Snap to Install

- New Ultra Rail Mounts include snap-in brackets for attaching rail
- Compatible with all the SnapNrack Mid Clamps and End Clamps customers love
- Universal End Clamps and snap-in End Caps provide a clean look to the array edge



Unparalleled Wire Management

- Open rail channel provides room for running wires resulting in a long-lasting quality install
- Industry best wire management offering includes Junction Boxes, Universal Wire Clamps, MLPE Attachment Kits, and Conduit Clamps
- System is fully bonded and listed to UL 2703 Standard

The Largest Span Capabilities of any Light Rail Solution

This table was prepared in compliance with applicable engineering codes and standards. Values are based on the following:

- ASCE 7-10
- Chapter 30 Wind Loads & Chapter 7 Snow Loads
- Roof Slope: 7 - 27 deg
- Roof Height: 0 - 30 ft
- Exposure: B
- Roof Zone: 1
- Module Orientation: Portrait
- Roof Type: Comp

Visit SnapNrack.com for detailed span tables and certifications.

System Span Key

6 ft Spans

4 ft Spans

2 ft Spans

Ultra Rail, UR-40 Rail System Spans																
Snow (psf)	Wind (mph)															
	110	115	120	125	130	135	140	145	150	155	160	165	170	175	180	190
	0															
	5															
	10															
	15															
	20															
	25															
	30															
	35															
	40															
	45															
	50															
	60															
	70															
	80															
	90															
	100															
	110															
	120															

Quality. Innovative. Superior.

SnapNrack Solar Mounting Solutions are engineered to optimize material use and labor resources and improve overall installation quality and safety.

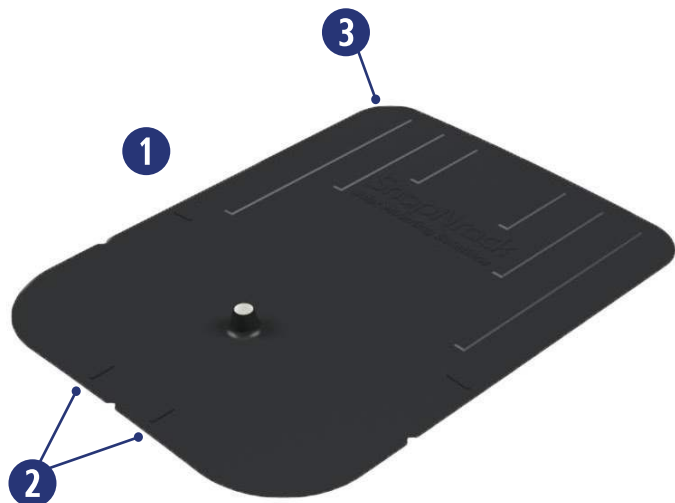
877-732-2860

www.snapnrack.com

contact@snapnrack.com

© 2018 by SnapNrack Solar Mounting Solutions. All rights reserved

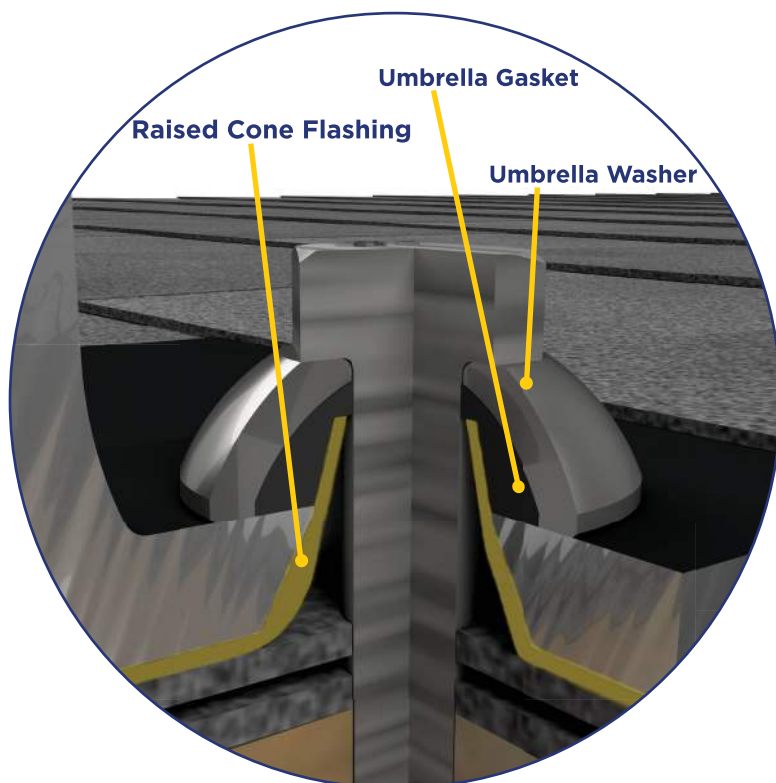
SnapNrack Umbrella Sealing Technology



Featuring New Innovative Flashing

- ① Smaller 9"x12" size allows for easier insertion under shingles
- ② Alignment markers make it easy to locate pilot holes
- ③ Rounded corners make for easier insertion & eliminate corner points from folding up

- **Innovative Flashing Elevates Protection.** New flashing uses a fully formed raised cone to prevent any potential water from getting into penetration. Feel secure as the flashing is one piece and doesn't rely on multiple parts sealing together.
- **Mechanical Design Creates a Lifelong Seal.** Patented Umbrella technology utilizes unique Umbrella Washer to seal lag bolt, L Foot, and flashing and prevent any potential roof leaks. Technology passes UL 2582 Wind Driven Rain Test without a rubber seal, however rubber gasket is included for extra peace of mind.
- **Single Fastener Eliminates Extra Steps.** Utilize one lag bolt with Umbrella Washer to secure the entire mount assembly and flashing. No longer necessary to attach a base, then a flashing, then a mount as all are secured in one step.
- **Single Tool Installation.** SnapNrack was the first in the industry to develop a complete system that only requires a single tool. That tradition is continued as a ½" socket is still the only tool necessary to secure the mount as well as all other parts of the system.



Note: Flashing shown in yellow for illustration purposes only.

Industry Leading Spans for a Light Rail Solution

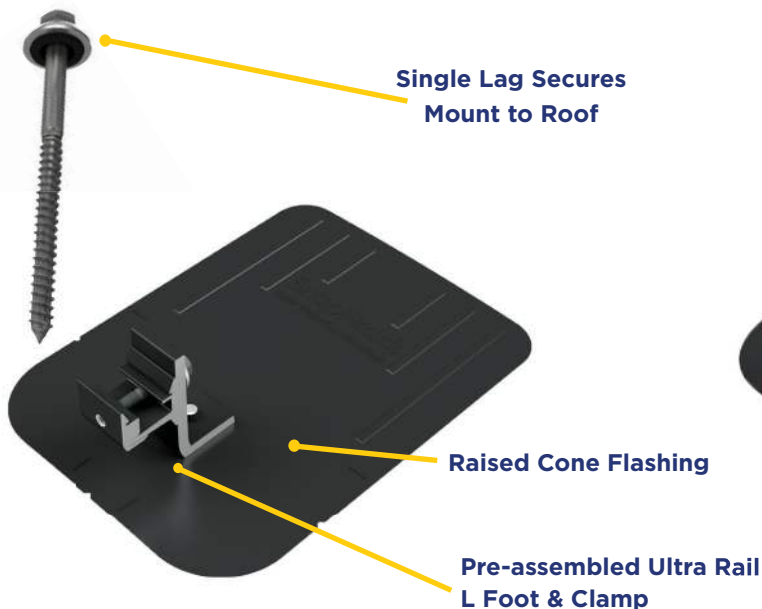
This table was prepared in compliance with applicable engineering codes and standards. Values are based on the following:

- ASCE 7-10
- Chapter 30 Wind Loads & Chapter 7 Snow Loads
- Roof Slope: 7 - 27 deg
- Roof Height: 0 - 30 ft
- Exposure: B
- Roof Zone: 1
- Module Orientation: Portrait
- Module Type: 60 Cell Modules
- Roof Type: Comp

System Span Key	
	6 ft Spans
	4 ft Spans
	2 ft Spans

		Ultra Rail, UR-40 Rail System Spans															
		Wind (mph)															
Snow (psf)		110	115	120	125	130	135	140	145	150	155	160	165	170	175	180	190
	0																
	5																
	10																
	15																
	20																
	25																
	30																
	35																
	40																
	45																
	50																
	60																
	70																
	80																
	90																
	100																
	110																
	120																

Visit SnapNrack.com for detailed span tables and certifications.

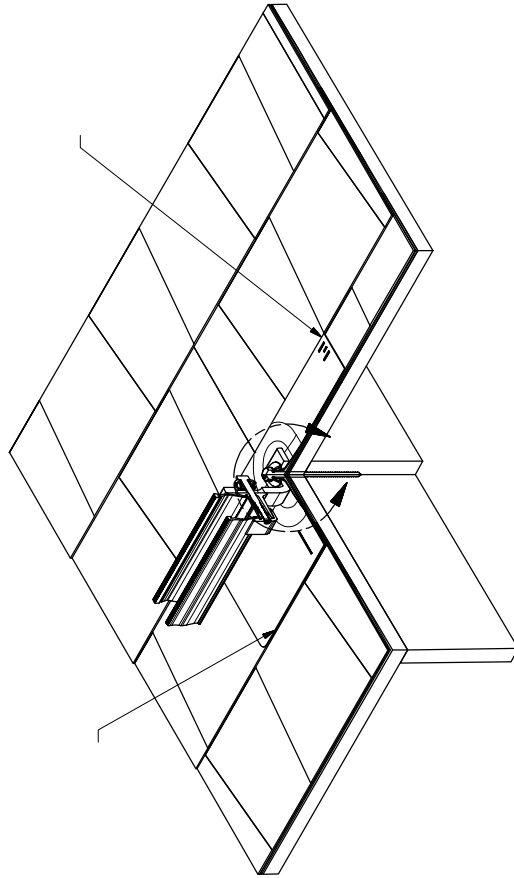
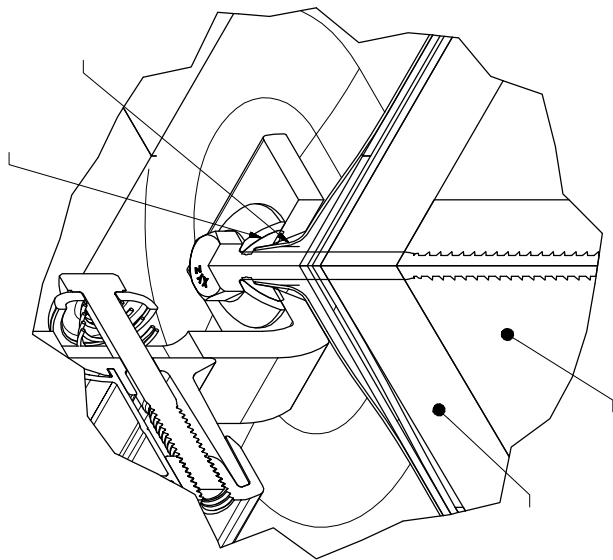
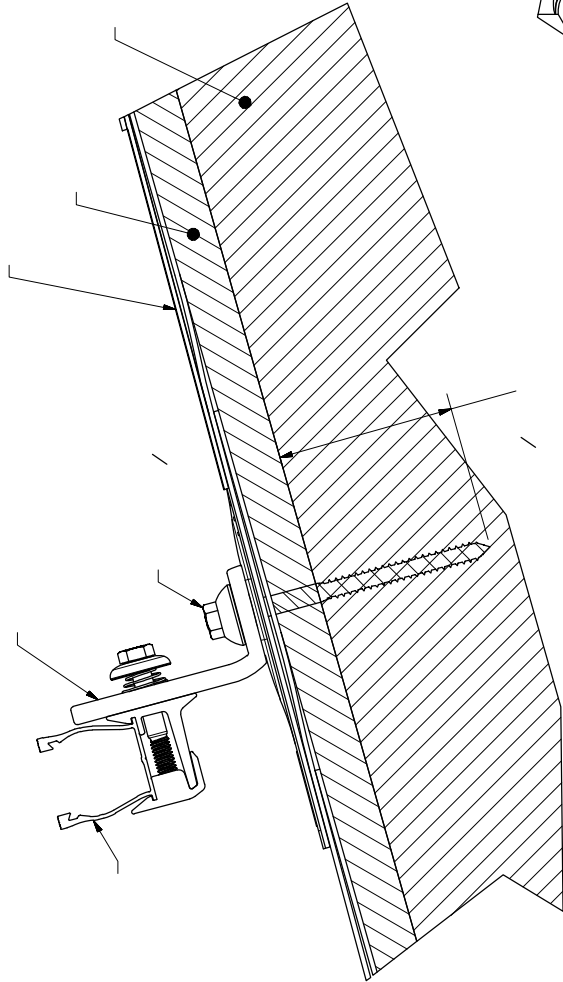


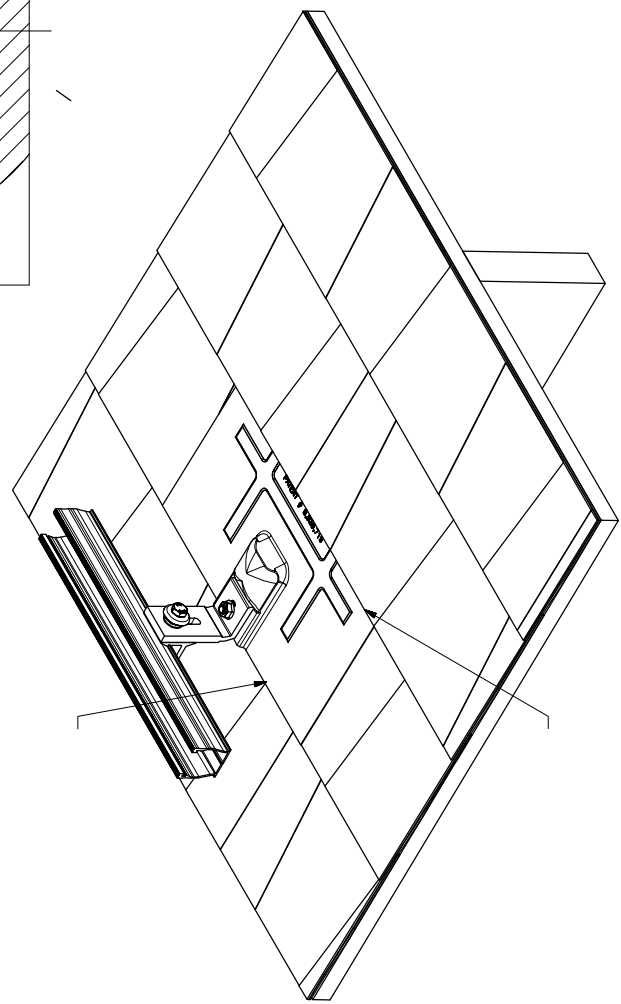
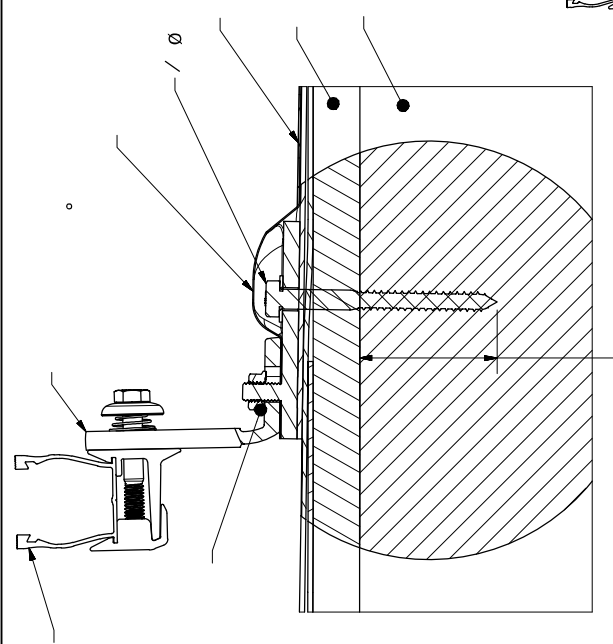
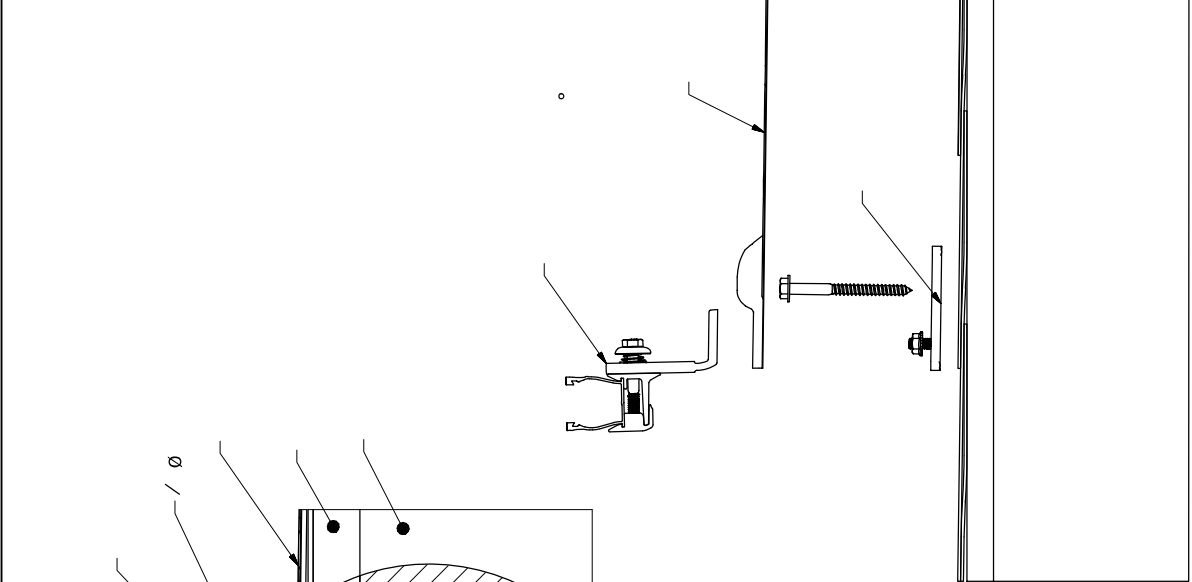
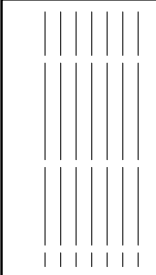
Certifications

SnapNrack Ultra Rail system has been evaluated by Underwriters Laboratories (UL) and Listed to UL/ANSI Standard 2703 for Mechanical Loading and Fire. Additionally it is listed to UL 2582 for wind-driven rain.



[illegible]





Ø /