

#### ELECTRICAL POWER PLAN NOTES

- FURNISH AND INSTALL WIRING AND HOOKUP FOR EACH CASHIER'S MODULE INCLUDING CONVENIENCE CIRCUIT, DEDICATED CIRCUIT WITH ISOLATED GROUND AND PHONE/DATA CONNECTION. CIRCUITS SHALL BE TERMINATED AT A JUNCTION BOX MOUNTED 12" O" A.F.F. WITH 15WHIP AND FINAL CONNECTION MADE TO SPECIAL PLUG-IN 'PIGTAIL' CONNECTORS. FDS OPENING TEAM WILL INSTALL POWER POLES TO FINAL CHECKOUT LOCATIONS BY ATTACHING THESE CONNECTORS. VERIFY EXACT LOCATION OF EACH REQUIRED DROP WITH TENANT'S CONSTRUCTION REPRESENTATIVE.
- ALL CIRCUITS SERVING RECEPTACLES TO CHECK-OUT AND VENDING MAY BE RUN IN THE SAME CONDUIT.
- FDS REQUIRES (4) TELEPHONE/DATA DROPS, (1) IN OFFICE WITH QUAD WALL JACK AND (3) AT CASH CHECKOUT. FIELD VERIFY EXACT LOCATIONS, INSTALLATION AND QUANTITY OF DEVICES WITH FDS STORE OPERATOR AT JOB SITE. E.C. SHALL PROVIDE 3/4" CONDUIT UP IN WALLS (IF NOT LOCATED IN POWER POLE) TO ABOVE CEILING. ALL CAT. 5 CABLES SHALL BE RUN BY OTHERS.
- FURNISH AND INSTALL WIRING AND HOOKUP FOR ONE DEDICATED CIRCUIT WITH ISOLATED GROUND ABOVE CEILING AT STOREFRONT DOORS FOR SECURITY SYSTEM (EAS). CIRCUIT SHALL BE TERMINATED AT JUNCTION BOX MOUNTED 12" AFF WITH FINAL CONNECTION MADE TO SPECIAL PLUG-IN 'PIGTAIL' CONNECTOR. FDS OPENING TEAM WILL INSTALL POWER POLE TO FINAL LOCATION BY ATTACHING TO THIS CONNECTOR. VERIFY EXACT LOCATION WITH TENANT'S CONSTRUCTION REPRESENTATIVE.
- PROVIDE DEDICATED ISOLATED GROUND RECEPTACLES WITH ISOLATED GROUNDING CONDUCTOR BACK TO SERVICE GROUND.
- FURNISH AND INSTALL WIRING AND HOOKUP FOR REFRIGERATED DRINK BOX AND PROMO DISPLAY. CIRCUIT SHALL BE TERMINATED AT A JUNCTION BOX MOUNTED 12" AFF WITH 15" WHIP AND WITH FINAL CONNECTION MADE TO A SPECIAL PLUG-IN 'PIGTAIL' CONNECTOR. FDS OPENING TEAM WILL INSTALL POWER POLE TO FINAL LOCATION BY ATTACHING TO THIS CONNECTOR. VERIFY EXACT LOCATION WITH TENANT'S CONSTRUCTION REPRESENTATIVE.
- FURNISH AND INSTALL WIRING HOOKUP FOR UNICRU COMPUTER STATION INCLUDING DEDICATED CIRCUIT. CIRCUIT SHALL BE TERMINATED AT A JUNCTION BOX MOUNTED 12" AFF WITH FINAL CONNECTION MADE TO SPECIAL PLUG-IN 'PIGTAIL' CONNECTORS. FDS OPENING TEAM WILL INSTALL POWER POLE TO FINAL LOCATION BY ATTACHING THIS CONNECTOR. VERIFY EXACT LOCATION WITH TENANT'S CONSTRUCTION REPRESENTATIVE.
- FURNISH AND INSTALL CONDUIT AND WIRING FOR EXTERIOR BUILDING SIGN. CIRCUIT SHALL BE TERMINATED AT JUNCTION BOX ABOVE CEILING. CIRCUIT SHALL BE CONTROLLED BY PHOTOCELL. FINAL CONNECTIONS SHALL BE MADE BY THE ELECTRICAL CONTRACTOR.
- EXTERIOR MOTION SENSOR SYSTEM SYMBOL LEGEND**
- SECURITY HORN MOUNTED ON ROOF ON BACKSIDE OF PARAPET. FEDERAL SIGNAL MODEL 302GC-120.
- SECURITY STROBE LIGHT (CLEAR) MOUNTED ON FASCIA AT CORNER OF BUILDING BELOW PARAPET CAP. FEDERAL SIGNAL MODEL 131-ST-120C. PROVIDE WITH MODEL LVMB2 (WALL MOUNT BRACKET) OR LVMB3 (CORNER MOUNT BRACKET).
- EXTERIOR MOTION SENSOR MOUNTED BELOW GUTTER AND NO CLOSER THAN 4 FEET TO DOWNSPOUT. PROVIDE RAB LIGHTING MODEL STL200W (120V). MOTION SENSOR SHALL BE ADJUSTED TO POINT DOWNWARD.
- EXTERIOR MOTION SENSOR SYSTEM NOTES:**
- ELECTRICAL CONTRACTOR SHALL PURCHASE COMPONENTS OF EXTERIOR MOTION SENSOR SYSTEM THROUGH A NATIONAL ACCOUNT PROGRAM. ELECTRICAL CONTRACTOR SHALL CONTACT CHRIS STUDNEY WITH EDI (ELECTRICAL DISTRIBUTORS, INC.) @ 704-372-3040 FOR INFORMATION REGARDING THIS PROGRAM.
  - ELECTRICAL CONTRACTOR SHALL WIRE ALL COMPONENTS OF EXTERIOR MOTION SENSOR SYSTEM ACCORDING TO THE MANUFACTURER'S INSTALLATION INSTRUCTIONS. SEE DETAILS 5MM FOR WIRING DETAILS
  - ALL MOTIONS SENSORS SHALL BE WIRED IN SERIES.

- ELECTRICAL CONTRACTOR SHALL PROVIDE A WEATHERPROOF JUNCTION BOX FOR LIGHTED ROAD SIGN. MOUNT TO SIGN PEDESTAL OR POLE. ELECTRICAL CONTRACTOR SHALL RUN WIRE IN CONDUIT AS SPECIFIED ON PLANS TO SIGN. FINAL CONNECTIONS SHALL BE MADE BY THE ELECTRICAL CONTRACTOR.
- ALL EXTERIOR LIGHTING AND SIGN CIRCUITS SHALL BE CONTROLLED BY PHOTOCELL MOUNTED ON BACK SIDE OF FRONT PARAPET WALL.
- PROVIDE A (1) ONE FOOT PIECE (OF 3" EMPTY CONDUIT RUNNING THROUGH THE WALL AT LOCATIONS AS SPECIFIED ON THE PLANS. ALL CONDUITS MUST BE LOCATED 12" ABOVE THE CEILING. PROVIDE FIRE CAULK AND CAP OFF CONDUIT FOR FUTURE USE BY FAMILY DOLLAR.
- NOT USED.
- FURNISH AND INSTALL WIRING (2#10 HOTS, 1#10 NEUTRAL, 1#10 GROUND) AND HOOKUP FOR ONE 208V-1PH 20A DEDICATED CIRCUITS FOR FREEZER. CIRCUIT SHALL BE TERMINATED AT A JUNCTION BOX MOUNTED 12" O" AFF WITH 35" WHIP AND WITH FINAL CONNECTION MADE TO "PLUG-IN PIGTAIL" CONNECTOR. FDS OPENING TEAM WILL INSTALL POWER POLE TO FINAL LOCATION BY ATTACHING TO THIS CONNECTOR. VERIFY EXACT LOCATION WITH TENANT'S CONSTRUCTION REPRESENTATIVE.
- FURNISH AND INSTALL WIRING (3#10 HOTS, 1#10 NEUTRAL, 1#10 GROUND) AND HOOKUP FOR THREE 120V-1PH 20A DEDICATED CIRCUITS FOR COOLERS. CIRCUITS SHALL BE TERMINATED AT A JUNCTION BOX MOUNTED 12" O" AFF WITH 35" WHIP AND WITH FINAL CONNECTION MADE TO SPECIAL "PLUG-IN PIGTAIL" CONNECTOR. FDS OPENING TEAM WILL INSTALL POWER POLE TO FINAL LOCATION BY ATTACHING TO THIS CONNECTOR. VERIFY EXACT LOCATION WITH TENANT'S CONSTRUCTION REPRESENTATIVE.
- MOUNT RECEPTACLE RECESSED IN WALL FLUSH TO MASONRY FACE.
- PROVIDE DEDICATED ISOLATED GROUND RECEPTACLES WITH ISOLATED GROUNDING CONDUCTOR BACK TO SERVICE GROUND. SEE TELEPHONE BOARD DETAIL.
- FURNISH AND INSTALL WIRING AND HOOKUP FOR ATM STATION INCLUDING DEDICATED CIRCUIT. CIRCUIT SHALL BE TERMINATED AT JUNCTION BOX MOUNTED 12" O" AFF WITH FINAL CONNECTION MADE TO SPECIAL PLUG-IN 'PIGTAIL' CONNECTORS. FDS OPENING TEAM WILL INSTALL POWER POLE TO FINAL LOCATION BY ATTACHING THIS CONNECTOR. VERIFY EXACT LOCATION WITH TENANT'S CONSTRUCTION REPRESENTATIVE.
- FURNISH AND INSTALL WIRING AND HOOKUP FOR SECURITY MONITOR. CIRCUIT SHALL BE TERMINATED AT JUNCTION BOX MOUNTED 12" O" A.F.F. VERIFY EXACT LOCATION WITH TENANT'S CONSTRUCTION REPRESENTATIVE. SEE MONITOR DETAIL ON ARCHITECTURAL DRAWINGS FOR ADDITIONAL INSTALLATION INSTRUCTIONS.

#### GENERAL LIGHTING NOTES:

- ALL EXTERIOR LIGHTING SHALL BE CONTROLLED BY PHOTOCELL.
- ALL INTERIOR LIGHTING SHALL BE ROUTED THROUGH LIGHTING CONTROL TIME-CLOCK PER FLORIDA ENERGY CODE.

#### ELECTRICAL LIGHTING PLAN NOTES:

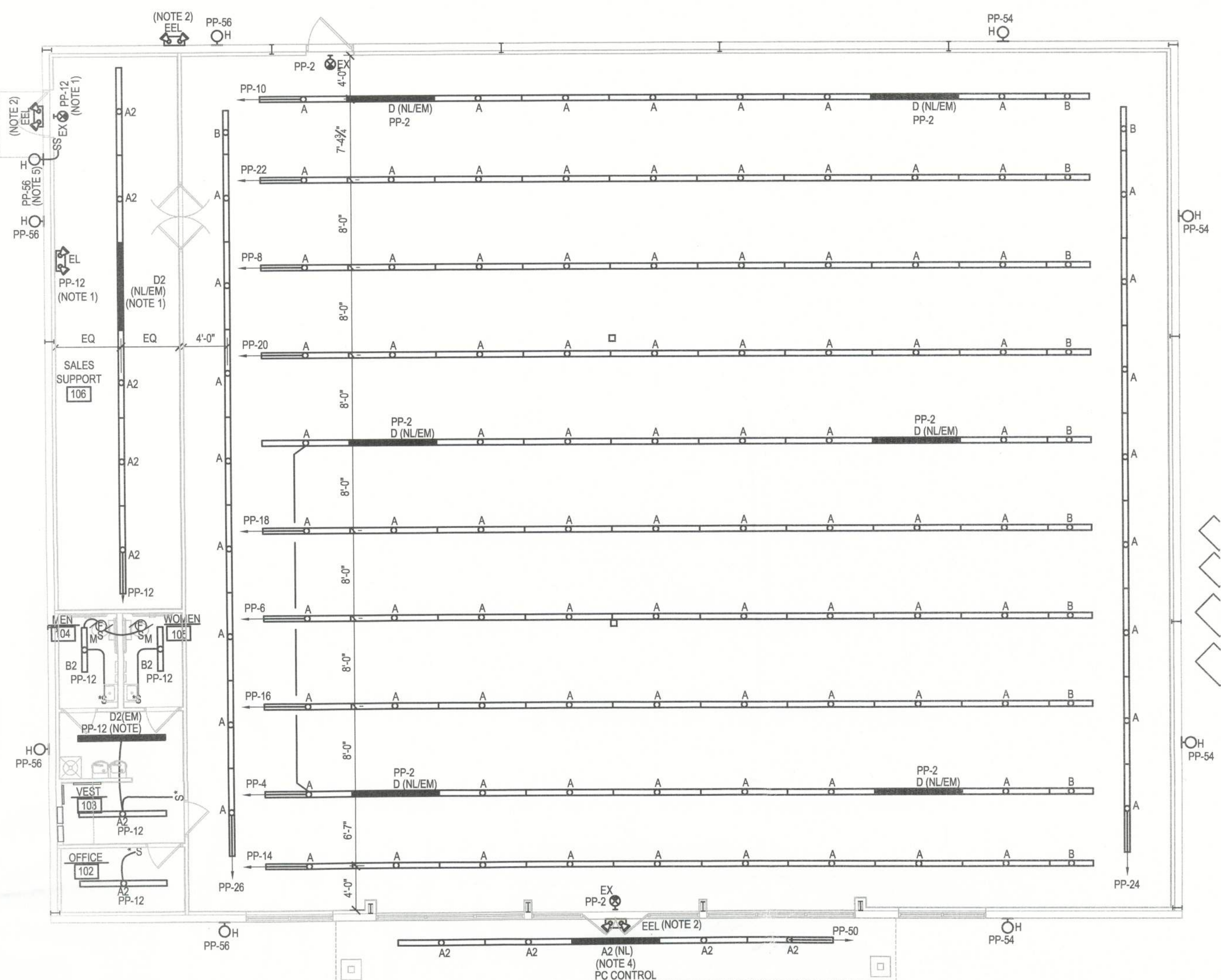
- WIRE "EX" AND "EL" TO HOT LEG OF NEAREST LOCAL LIGHTING CIRCUIT AHEAD OF ANY SWITCHING INCLUDING CONTRACTORS.
- WIRE "EL" TO HOT LEG OF NEAREST EXTERIOR LIGHTING CIRCUIT AHEAD OF ANY SWITCHING INCLUDING CONTRACTORS.
- SUSPEND EXIT SIGN FROM STRUCTURE USING 1" RIGID CONDUIT.
- NIGHT LIGHT. FIXTURE SHALL REMAIN ON 24HRS PER DAY. WIRE TO HOT LEG OF NEAREST LIGHTING CIRCUIT AHEAD OF ANY SWITCH INCLUDING CONTRACTORS.
- LIGHT SHALL BE CONTROLLED BY WALL SWITCH. WIRE TO HOT LEG OF LIGHTING CIRCUIT AHEAD OF ANY SWITCHING INCLUDING CONTRACTORS

#### ELECTRICAL SYMBOL SCHEDULE

- CONDUIT RUN CONCEALED, UNLESS NOTED OTHERWISE
- CIRCUIT CONTINUES BUT NOT SWITCH LEG.
- HOMERUN TO PANEL. ARROWS INDICATE QUANTITY OF CIRCUITS.
- STRIP FLUORESCENT FIXTURE, LETTER INDICATES TYPE
- FIXTURE ON NIGHT/EMERGENCY LIGHT CIRCUIT
- CEILING OR WALL MOUNTED EXIT SIGN RESPECTIVELY. ARROWS AS INDICATED ON PLANS, BATTERY POWERED.
- 20 AMPERE, SINGLE POLE OR THREE-WAY SWITCH, RESPECTIVELY. MOUNT 48" AFF.
- OCCUPANCY DETECTION SENSOR SWITCH. SENSOR SWITCH MODEL #WSD-WH.
- SIGNAL BELL MOUNTED 11" O" AFF. CONNECT TO SIGNAL BELL TRANSFORMER.
- DUPLEX RECEPTACLE, MOUNT 18" AFF.
- DUPLEX RECEPTACLE, MOUNT 24" AFF.
- GROUND FAULT INTERRUPTER RECEPTACLE
- WEATHERPROOF RECEPTACLE
- ISOLATED GROUND RECEPTACLE, MOUNT 18" AFF.
- DUPLEX RECEPTACLE MOUNTED IN CEILING
- RECEPTACLE FOR WATER COOLER. VERIFY EXACT LOCATION WITH PLUMBING CONTRACTOR.
- QUADRUPLEX RECEPTACLE, MOUNT 18" AFF
- NEMA 14-20 RECEPTACLE, MOUNT 18" AFF
- TELEPHONE OUTLET, MOUNT 18" AFF. PROVIDE 4" SQUARE BOX WITH SINGLE GANG RING & TELEPHONE TYPE PLATE. (NOTES3)
- SIMILAR TO ABOVE EXCEPT, MOUNT ABOVE COUNTER HEIGHT OR 60" AFF. (NOTE 3)
- DATA OUTLET, MOUNT 18" AFF. PROVIDE 4" SQUARE BOX WITH SINGLE GANG RING & TELEPHONE TYPE PLATE. AND EMPTY 3/4" CONDUIT RUN BACK TO THE TELEPHONE BACKBOARD. (NOTE 3)
- CONNECT ELECTRIC HOT WATER HEATER INSTALLED ON PLATFORM ABOVE MOP SINK.
- CONNECT UNIT HEATER.
- JUNCTION BOX PER N.E.C.
- SIGNAL BELL TRANSFORMER
- SIGNAL BELL PUSHBUTTON MOUNTED 78" AFG
- FRACTIONAL HORSEPOWER MANUAL MOTOR STARTER.
- NONFUSED SAFETY SWITCH, NUMBER INDICATES SWITCH RATING
- AND CONNECT TO BUILDING GROUNDING ELECTRODE SYSTEM. FUSED SAFETY SWITCH, NUMBER INDICATES FUSE RATING
- FRACTIONAL HORSEPOWER MOTOR CONNECTION.
- ELECTRICAL PANEL RECESSED MOUNTED.
- 4"x8"x3/4" FLAME RETARDANT PAINTED PLYWOOD COMMUNICATION BACKBOARD. SEE DETAIL 3M1.

#### 2 Electrical Lighting Plan

E101 SCALE: 1/8" = 1' - 0"



FIXTURE	MANUFACTURER / DESCRIPTION	# AND TYPES OF LAMPS	# OF BALLASTS	WATTS TOTAL	VOLTS	MOUNTING	NOTES
A	FDS-SLI-8 (4-LAMP) 8' FLUORESCENT STRIP WITH PS300 BALLAST LITHONIA T2 2 32	4-F28T8 LPSME841EX J30	1	112	120	SEE NOTE 7	1, 2, 4, 7
A2	FDS-SLI-8 (2-LAMP) 8' FLUORESCENT STRIP WITH PS300 BALLAST LITHONIA T2 2 32	2-F28T8 LPSME841EX J30	1	56	120	SEE NOTE 7	1, 2, 4, 7
B	FDS-SLI-4 (2-LAMP) 4' FLUORESCENT STRIP WITH PS300 BALLAST LITHONIA T2 2 32	2-F28T8 LPSME841EX J30	1	56	120	SEE NOTE 7	1, 2, 4, 7
B2	FDS-SLI-4 (1-LAMP) 4' FLUORESCENT STRIP WITH PS300 BALLAST LITHONIA T2 1 32	1-F28T8 LPSME841EX J30	1	28	120	SEE NOTE 7	1, 2, 4, 7
D	FDS-SLI-8 (4-LAMP) 8' FLUORESCENT STRIP WITH PS30000D M12 EMER. BALLAST LITHONIA T2 2 32	4-F28T8 LPSME841EX J30	1	112	120	SURFACE CEILING	1, 2, 4, 7, 8
D2	FDS-SLI-8 (2-LAMP) 8' FLUORESCENT STRIP WITH PS30000D M12 EMER. BALLAST LITHONIA T2 1 32	2-F28T8 LPSME841EX J30	1	56	120	SURFACE CEILING	1, 2, 4, 7, 8
G	NOT USED						
H	LITHONIA ALXW LED 130A350/51K SR3 EXTERIOR LED WALLPACK	1-115.2 W LED	1	128	120	WALL BRACKET	3
EEL	LITHONIA AFN-120/277-DB-EXT EXTERIOR EMERGENCY LIGHT W/ 2 HEADS. 90 MIN. BATTERY BACKUP AND UL LISTED FOR WET LOCATION	2-6V, 6W XENON	-	21	120	WALL BRACKET	3
EX	LITHONIA LQM-8-W-3-R-120/277-EL-N-M6 EXIT SIGN W/ NICKEL CADMIUM 90 MINUTE BATTERY. FACES AS INDICATED	LED	-	1	120	UNIVERSAL MOUNT	2
EL	LITHONIA ELM2 EMERGENCY LIGHT WITH 2 ADJUSTABLE HEADS AND 90 MINUTE BATTERY BACKUP	2-6V, 12W KRYPTON	-	1	120	UNIVERSAL MOUNT	2

**LIGHTING FIXTURE SCHEDULE NOTES:**

- PROVIDE FIXTURE ENERGY SAVING BALLAST
- COORDINATE EXACT LOCATION OF FIXTURES W/ ARCHITECTURAL REFLECTED CEILING PLAN
- PROVIDE FIXTURE W/ UL WET LOCATION LABEL
- PROVIDE LOW TEMPERATURE BALLAST FOR EXTERIOR FIXTURES
- PROVIDE SPACERS AS REQUIRED.
- COORDINATE LOCATION WITH ANY PLANNED SIGNAGE ON SIDE OR REAR WALLS (SEE A201)
- FIXTURES SHALL BE CHAIN HUNG WITH TOP OF FIXTURE AT 11'-6" AFF IN AREAS WITH EXPOSED STRUCTURE. FIXTURES SHALL BE SURFACE MOUNTED IN AREAS WITH GYP. BOARD OR LAY-IN CEILING.
- USE PS1400QD M8 BALLASTS IF ADDITIONAL COVERAGE IS REQUIRED. VERIFY WITH LOCAL CODES.

**LIGHTING NOTE:**  
ELECTRICAL CONTRACTOR SHALL PURCHASE LIGHT FIXTURES THROUGH A NATIONAL ACCOUNT PROGRAM. ELECTRICAL CONTRACTOR SHALL CONTACT DEREK MILLER WITH EDI (ELECTRICAL DISTRIBUTORS, INC) @ 704-372-3040 FOR INFORMATION

ARCHITECTURE  
ENGINEERING  
LAND SURVEYING

**LIS**

AA 28002940  
LBI1857  
2572 West State Road 408  
Suite 200  
Orlando, FL 32765  
Phone: (321) 244-0402  
Facsimile: (321) 244-9419

2130 Palm Beach Blvd.  
Suite 330  
Orlando, FL 32809  
Phone: (321) 693-9244  
Facsimile: (321) 693-9828

CLIENT NAME

**STEPHENS BARRIOS**

823 IRMA AVENUE  
ORLANDO, FLORIDA, 32803

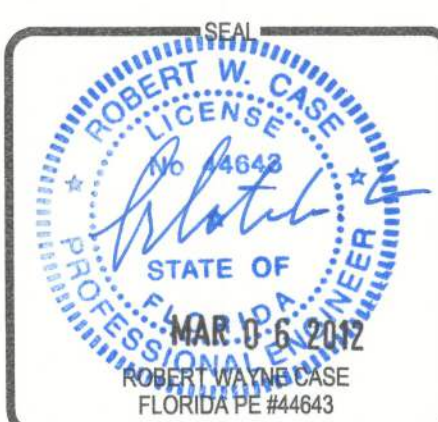
PROJECT NAME

**FAMILY DOLLAR STORE**

PLAN # 2011-04 / 104x80  
FORT WHITE, FL

SHEET TITLE

**Electrical Lighting and Power Plan**



RELEASE	DATE
1	
2	
3	
4	
5	
6	

PROJECT NO.

2012-001

ISSUE DATE

02/22/2012

DRAWN

CHECKED

E101