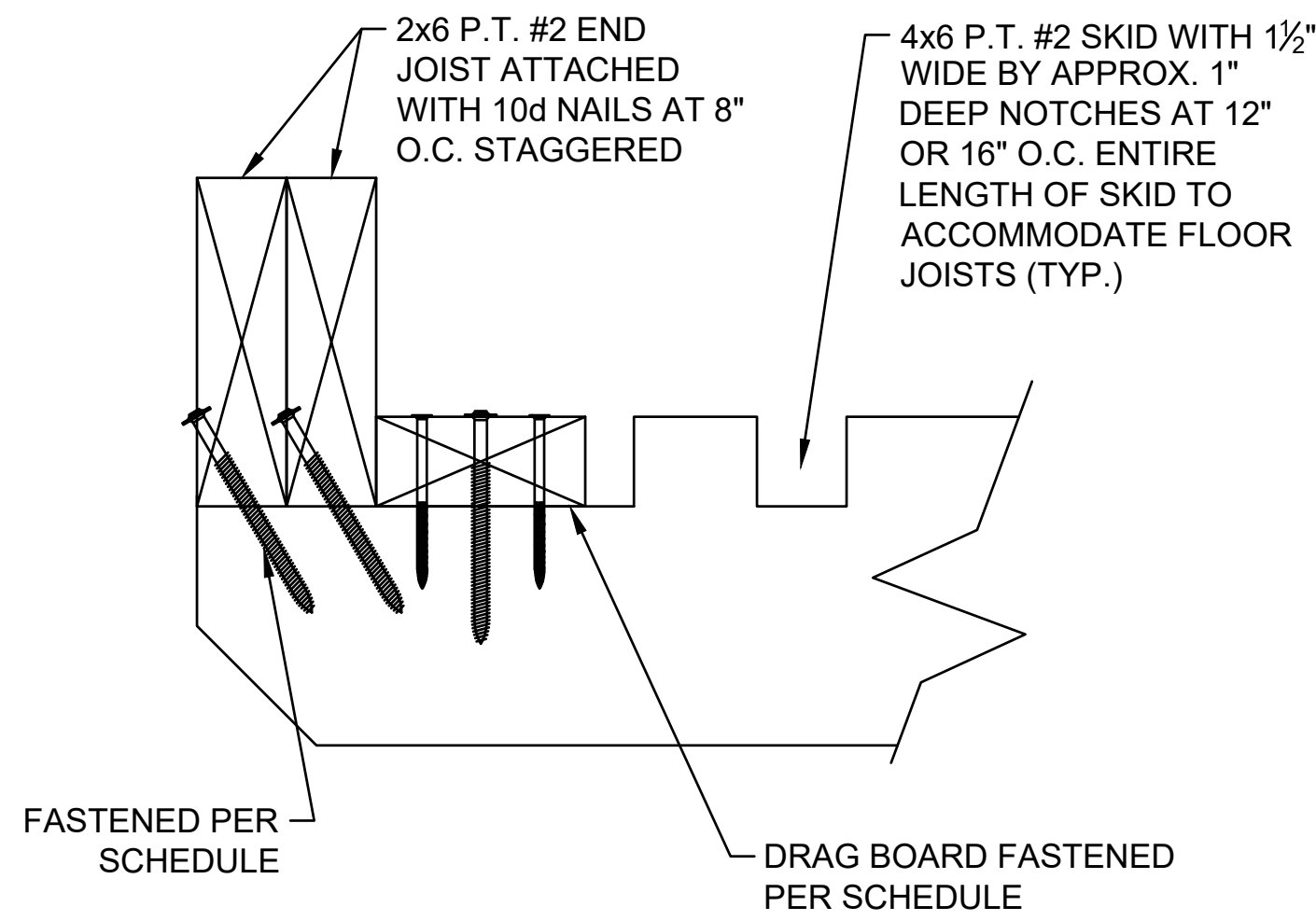
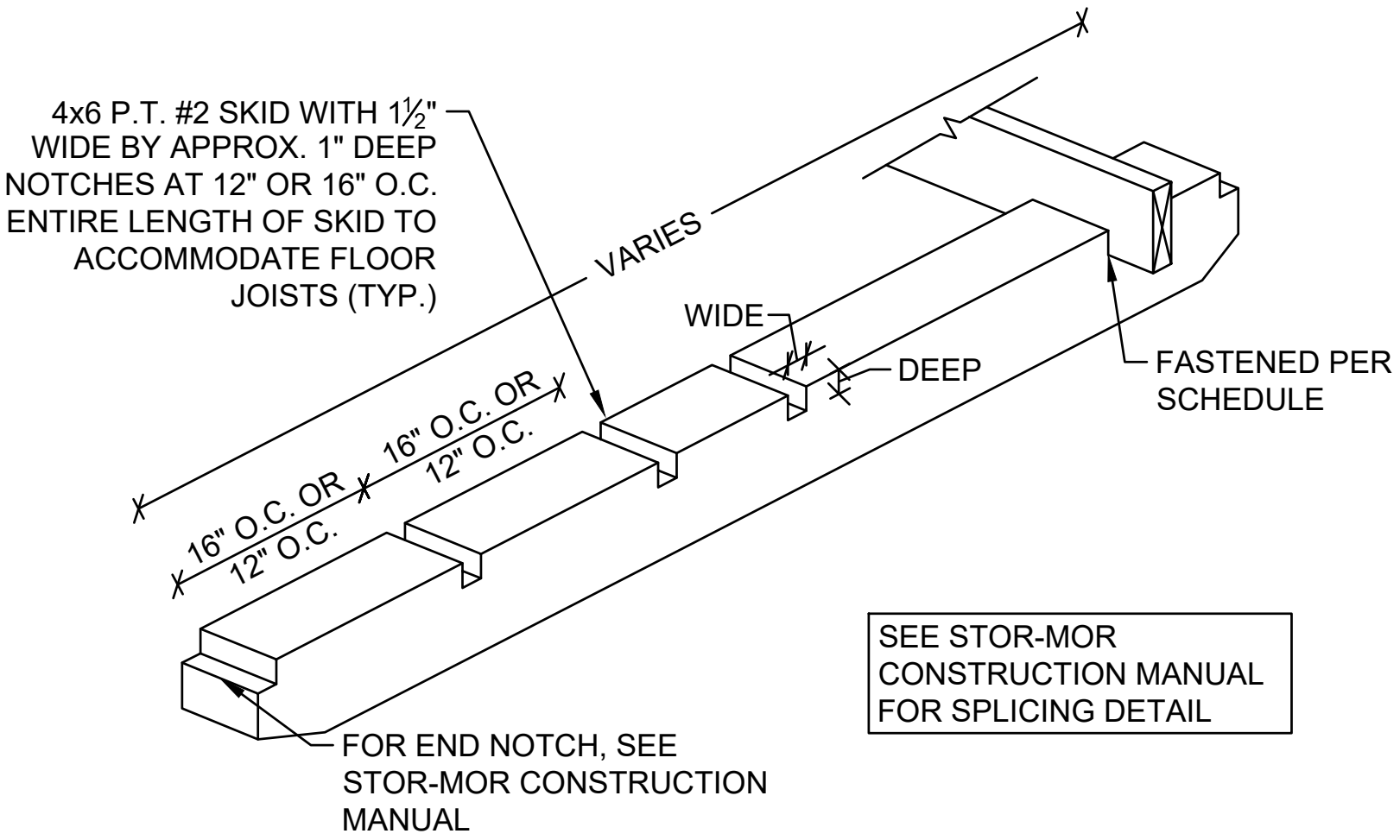


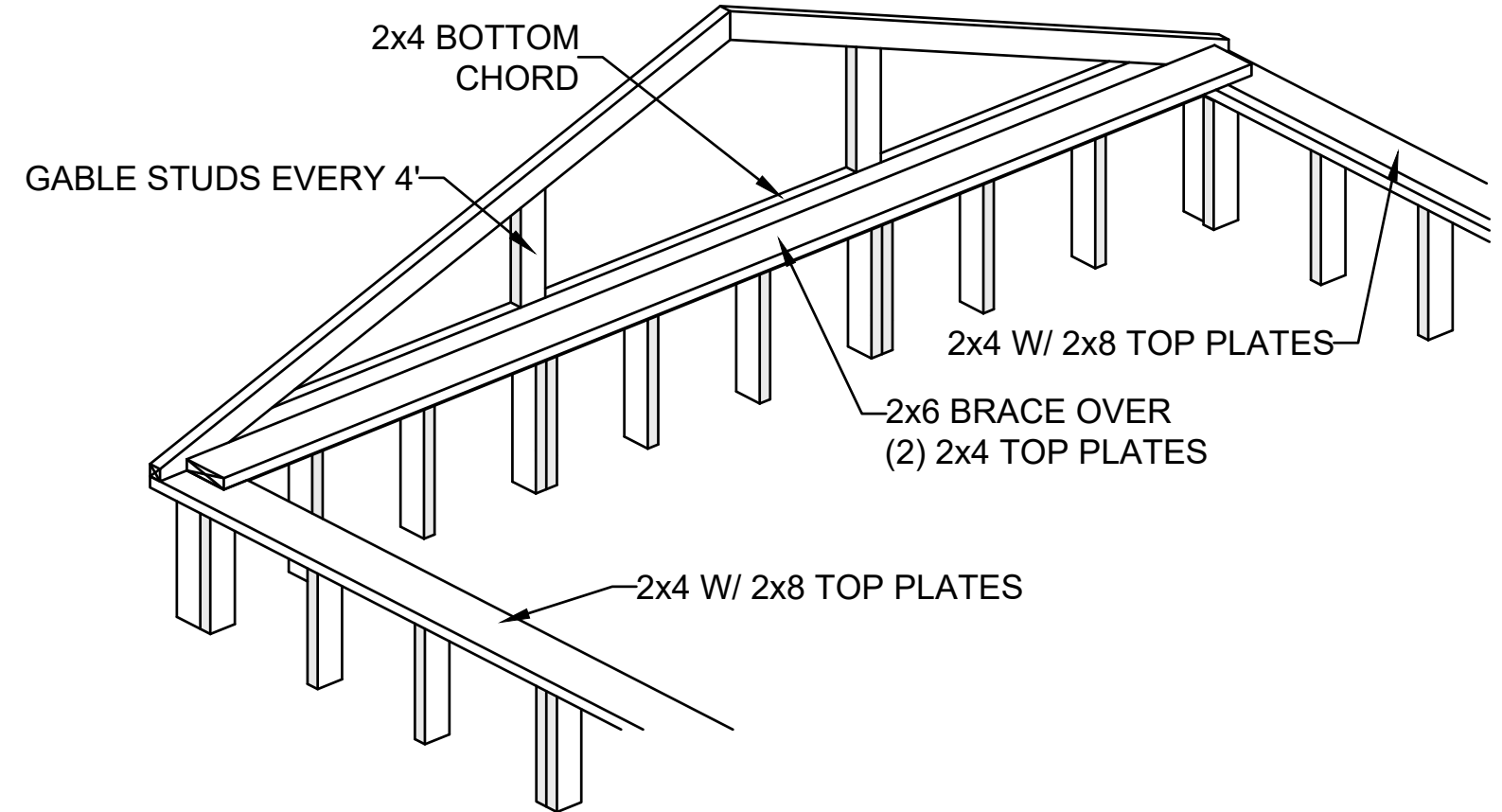
EXTERIOR DOOR DETAIL  
N.T.S.



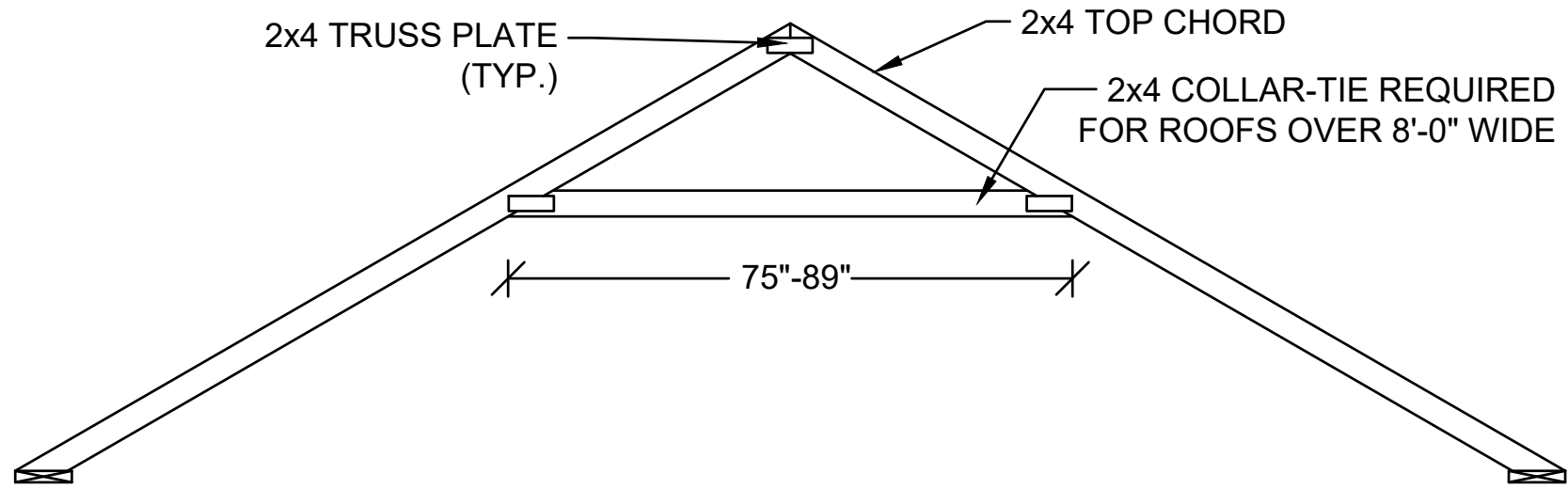
END WALL JOIST DETAIL  
N.T.S.



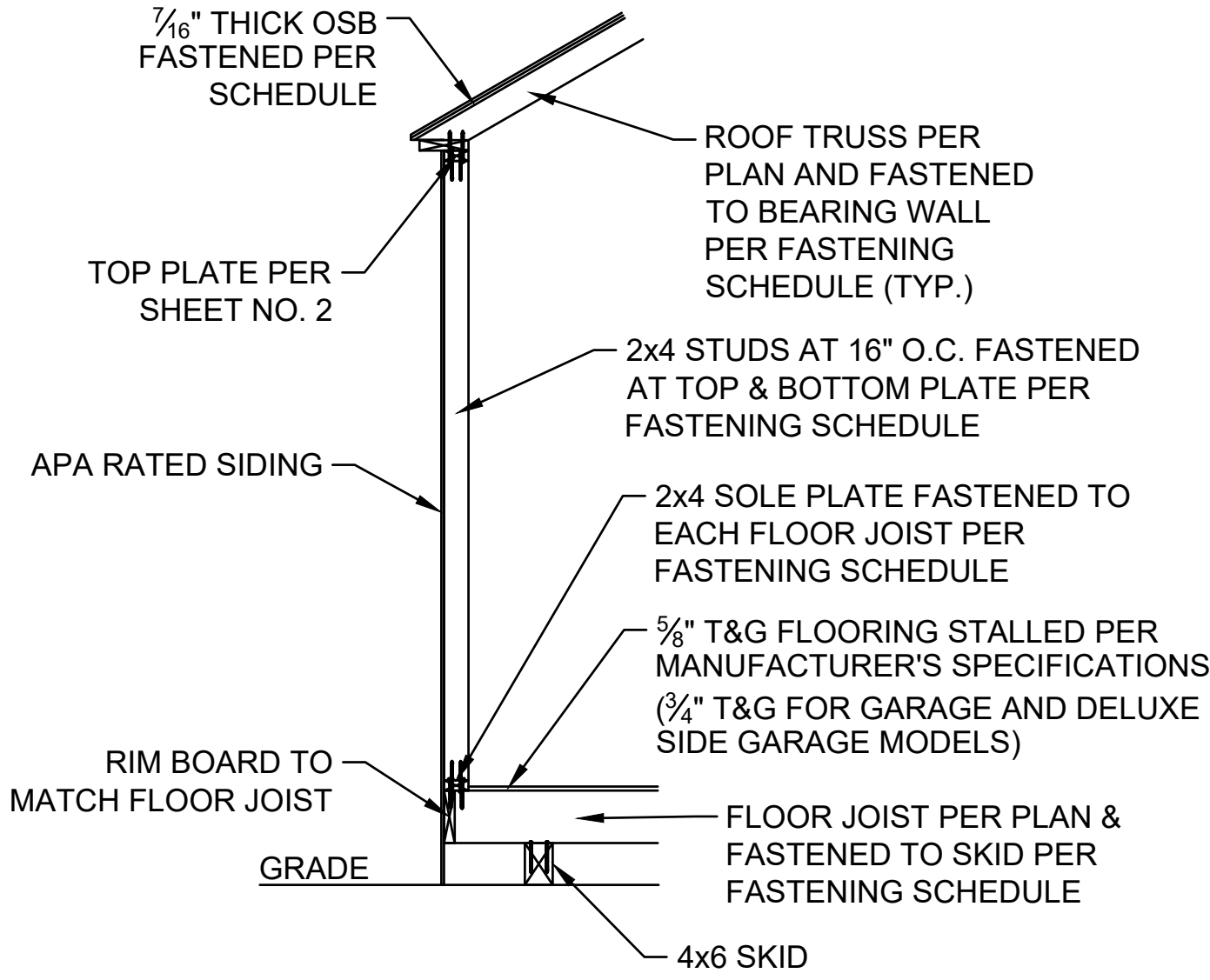
ISOMETRIC SKID DETAIL  
N.T.S.



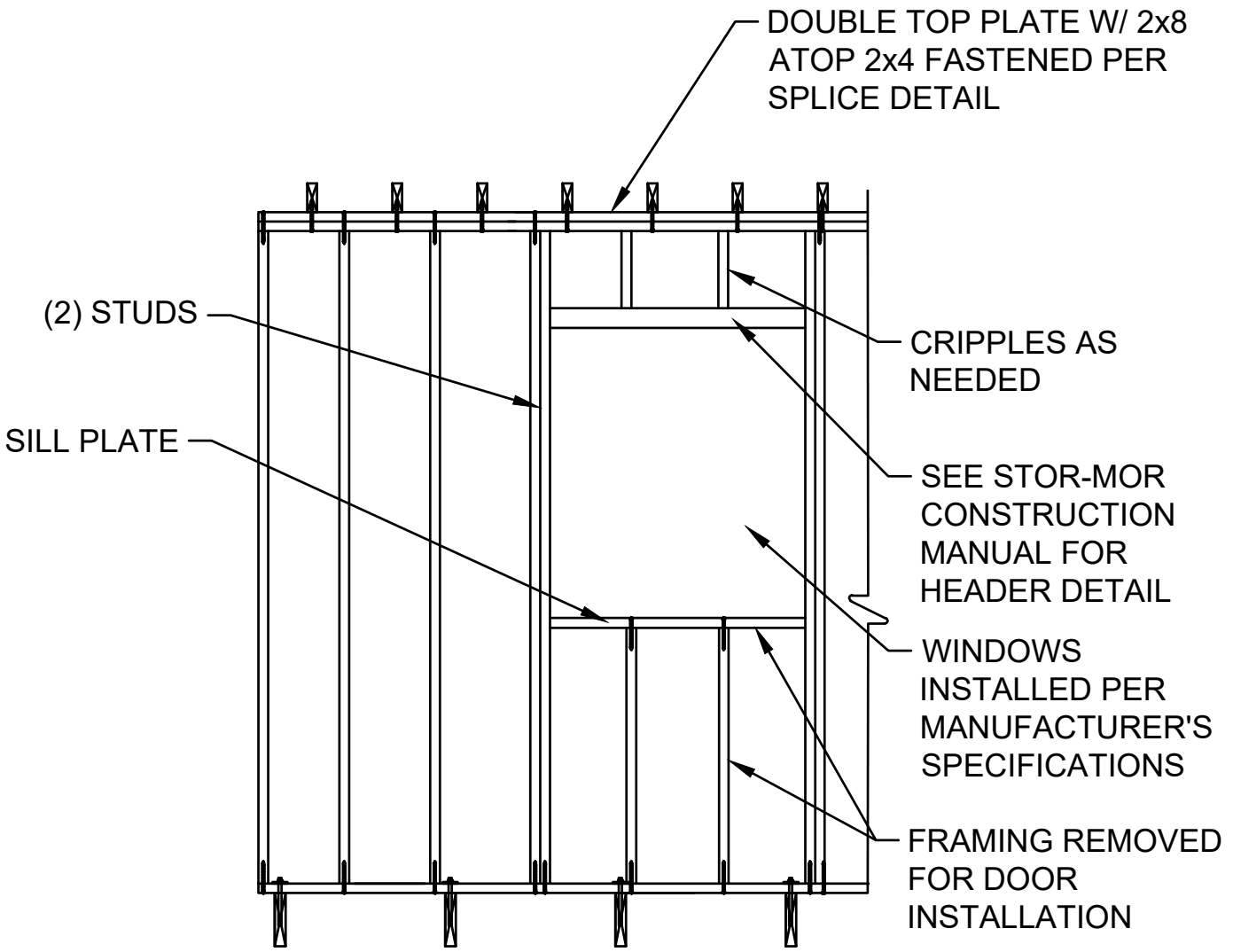
END WALL DETAIL  
N.T.S.



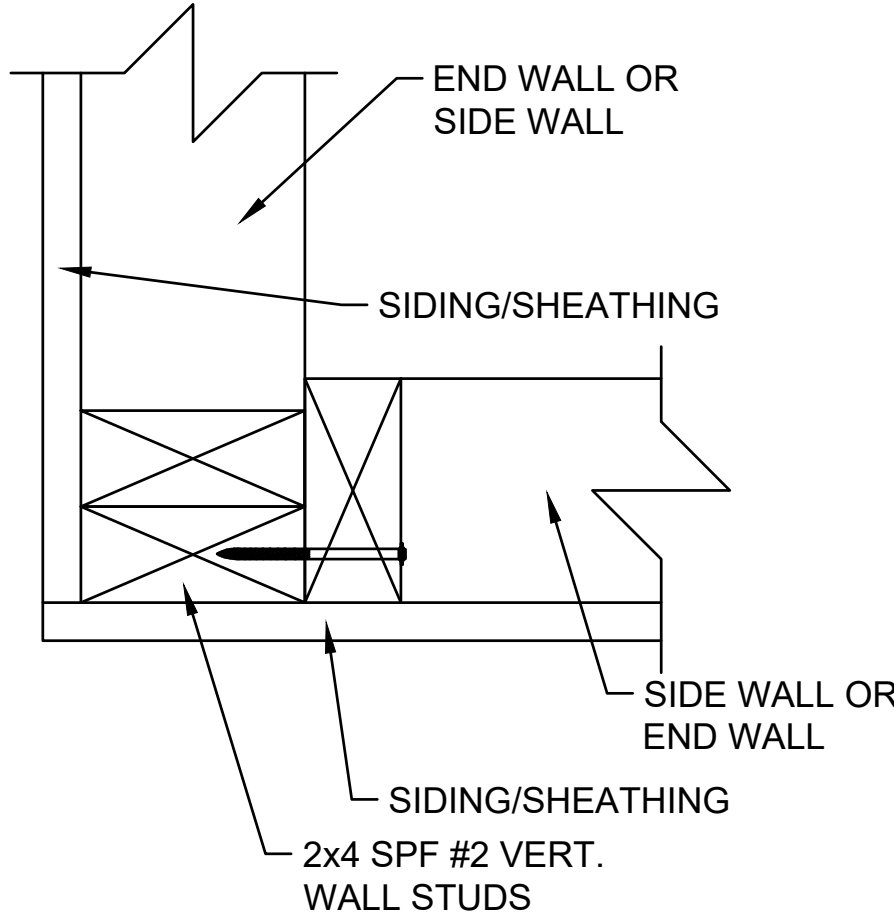
TYPICAL TRUSS DETAIL  
N.T.S.



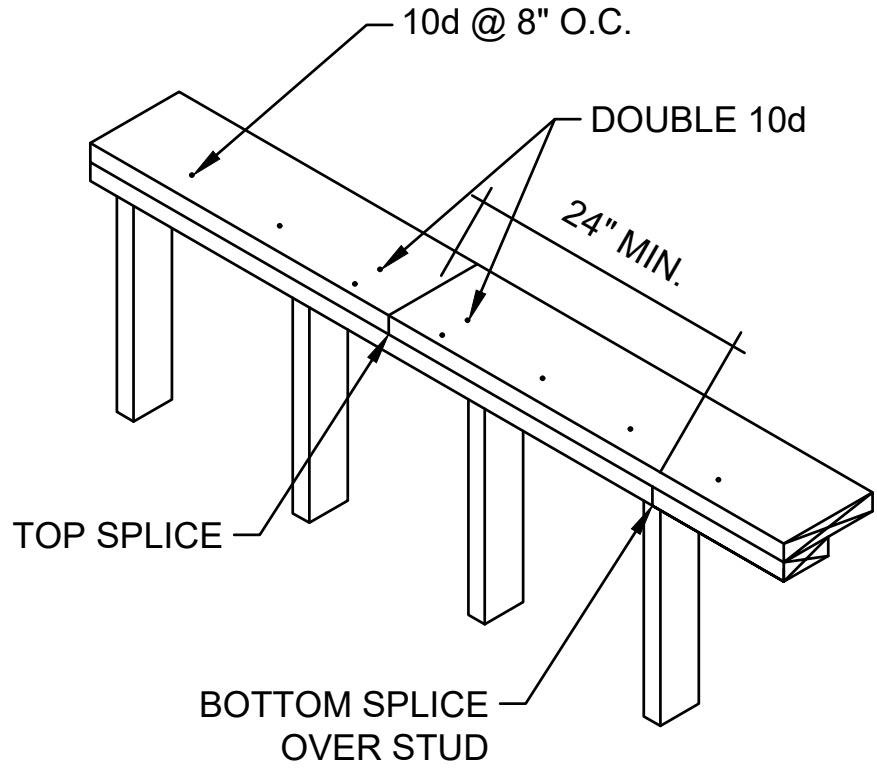
WALL FRAMING SECTION  
N.T.S.



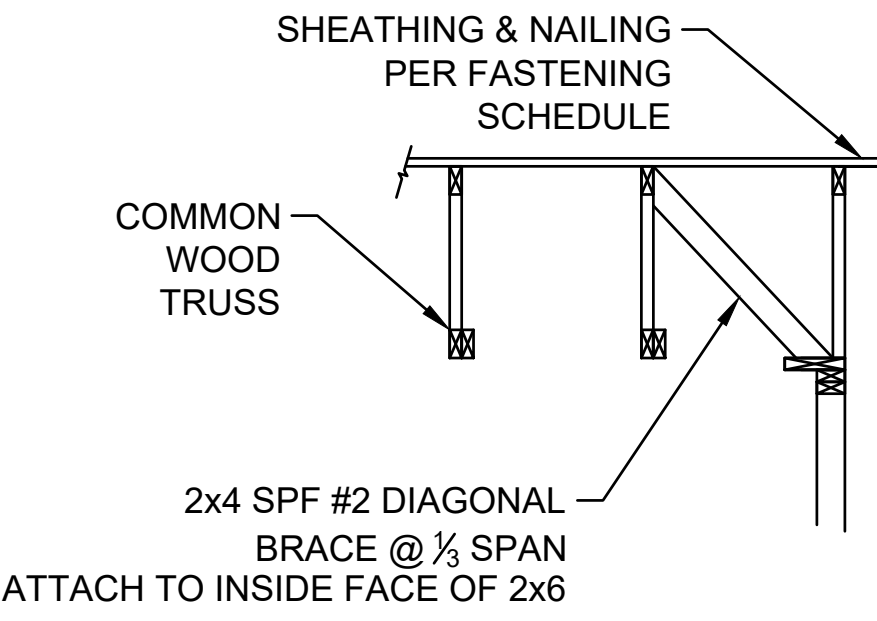
WALL OPENING DETAIL  
N.T.S.



CORNER CONNECTION DETAIL  
N.T.S.



TOP PLATE SPLICE DETAIL  
N.T.S.



DROP GABLE DETAIL  
N.T.S.

REVISION/ISSUED  
10/28/2020 PRELIM SUBMITTAL  
12/29/2020 FINAL SUBMITTAL  
2/1/2021 REV. SUBMITTAL

BY

PROJECT NO. 7698  
FIELD BOOK NO. N/A  
START DATE OCTOBER 2020  
DRAWN BY DMG  
CHECKED BY BCG  
C&A REF. NO. N/A  
PWC REF. NO. N/A  
FILE LOCATION

1401 BROADWAY STREET  
PADUCAH, KY 42001  
OFFICE (270) 568-5983  
www.chastainengineers.com

CHASTAIN  
& ASSOCIATES LLC  
CONSULTING ENGINEERS

UTILITY/SIDE UTILITY  
DETAILS

STOR-MOR  
PORTABLE BUILDINGS  
1104 PARIS ROAD  
MAYFIELD, KY

sheet no.  
4

project no.  
7698

STOR-MOR  
PORTABLE BUILDINGS