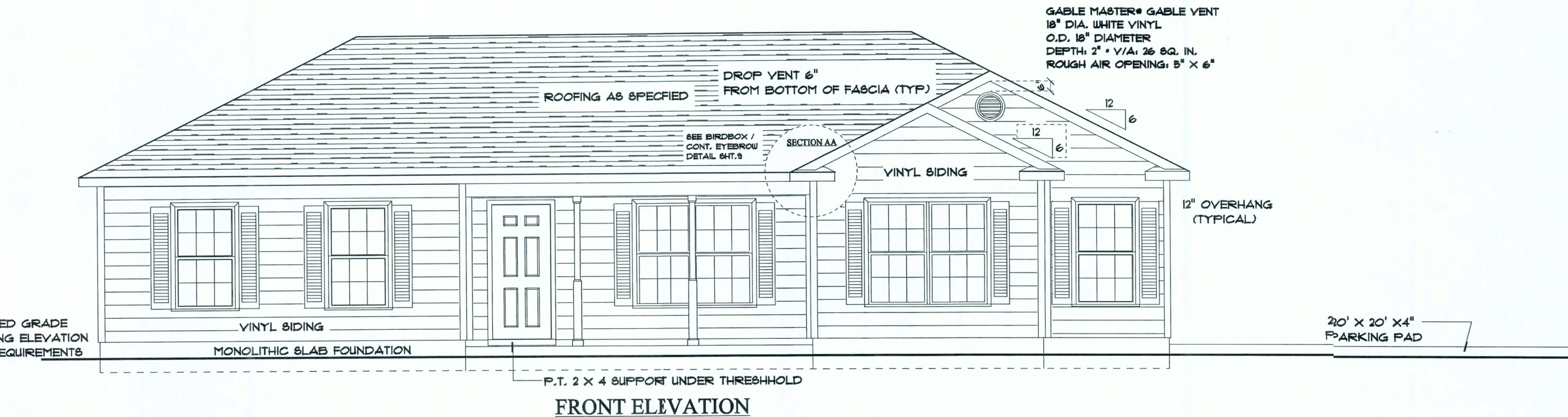
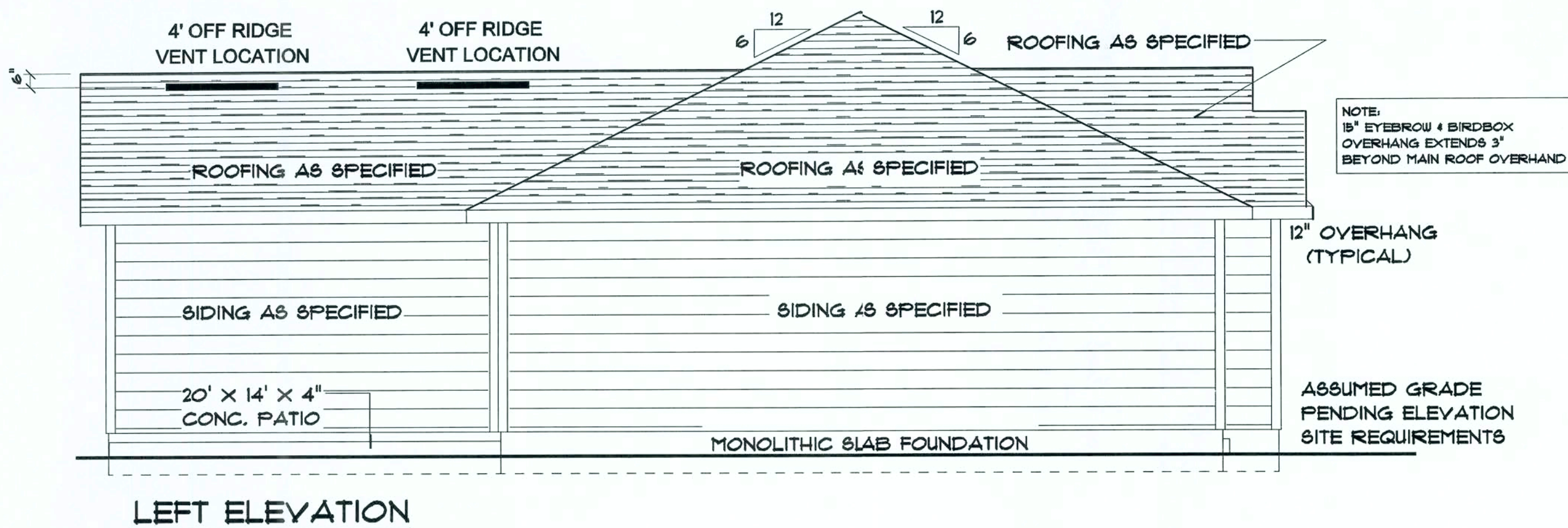


NOTE!:
REFER TO ENGINEERING FOR
SPECIFICATIONS AND CALCULATIONS.



ALLOW FOR MIN. 24" BETWEEN OFF RIDGE VENTS

OFF RIDGE VENTS ARE REQUIRED
DO NOT PLACE ON FRONT OF HOUSE



Pennyworth Homes

Got Land? Let's Build!
PennyworthHomes.com FL-CRC058477

EXHIBIT "A"

PLAN: WESTWIND

CUSTOMER NAME:
MS. MARSHA JARRELL
HEATED LIVING AREA

GROUND FLOOR: 1573
SECOND FLOOR: N/A
OTHER: N/A
TOTAL HEATED: 1573

NON-HEATED
LIVING AREA

PORCH: 106
GARAGE: N/A
OTHER: N/A
TOTAL U/R 1679

IMPORTANT-PLEASE READ
BELOW CAREFULLY

OUR SALES BROCHURES AND OTHER ADVERTISING LITERATURE ARE INTENDED TO GENERALLY REFLECT AND DEPICT THE STYLES AND QUALITY OF HOMES WE BUILD THROUGHOUT A PORTION OF THE UNITED STATES. OUR SALES MODELS ARE DESIGNED AND BUILT TO GENERALLY CONFORM WITH A VARIETY OF LOCAL CUSTOMS, PRACTICES, AND BUILDING CODES PREVALENT OR IN EFFECT IN THE IMMEDIATE AREA SURROUNDING THE LOCATION OF THOSE MODELS. THIS SET OF PLANS IS AN ACTUAL PART OF OUR CONTRACT WITH YOU AND, AS SUCH, IS INTENDED TO TAKE PRIORITY OVER ANYTHING IN CONFLICT WITH IT CONTAINED IN OUR ADVERTISING LITERATURE, OUR SALES MODELS AND EVEN OUR ORAL SALES PRESENTATION. NO CHANGE, MODIFICATION, OR REVISION OF THESE PRINTED PLANS SHALL BE BINDING ON THE PARTIES UNLESS SET FORTH ON THESE PLANS OR OTHERWISE REDUCED TO WRITING AND EXECUTED BY SAID PARTIES. PLEASE REVIEW THESE PLANS ALONG WITH "EXHIBIT B" OF YOUR CONTRACT CAREFULLY AND MAKE CERTAIN BEFORE YOU SIGN THEM THAT THEY ACCURATELY REPRESENT THE HOME YOU ARE PURCHASING. ADDITIONALLY, PENNYWORTH HOMES INC. HEREBY RESERVES THE RIGHT TO SUBSTITUTE MATERIALS OF EQUIVALENT QUALITY AND/OR TECHNIQUES OF ASSEMBLY AND/OR CONSTRUCTION METHODS FROM THAT CONTAINED IN THESE PLANS OR SPECIFIED IN EXHIBIT "B" WHERE NECESSARY TO ACCOMMODATE DIFFERENCES IN LOCAL CODES, GEOGRAPHIC CUSTOMS, OPTION SELECTION AND AVAILABILITY OF MATERIALS. ALL MATERIALS (LUMBER, OR OTHER BUILDING SUPPLIES) DELIVERED TO JOBSITE WHICH ARE IN EXCESS OF THOSE REQUIRED TO CONSTRUCT THE HOUSE AS AGREED REMAIN THE PROPERTY OF PENNYWORTH HOMES INC.

NOTE:
PENNYWORTH HOMES INC. RESERVES THE RIGHT TO ONLY MAKE CHANGES TO PLANS, REQUESTED BY BUYERS, THAT PENNYWORTH HOMES INC. DEEMS TO BE AESTHETICALLY, ARCHITECTURALLY, AND STRUCTURALLY SOUND.

THIS PLAN REFLECTS THE DESIGN
AS PER BUYERS' FINAL APPROVED
SIGNED PLANS DATED 5/11/2006
CHANGES MADE TO REPLICATE
ENGINEERS NOTES AND
CALCULATIONS.

CONSTRUCTION PLANS

SCALE: 1/4" = 1'-0"

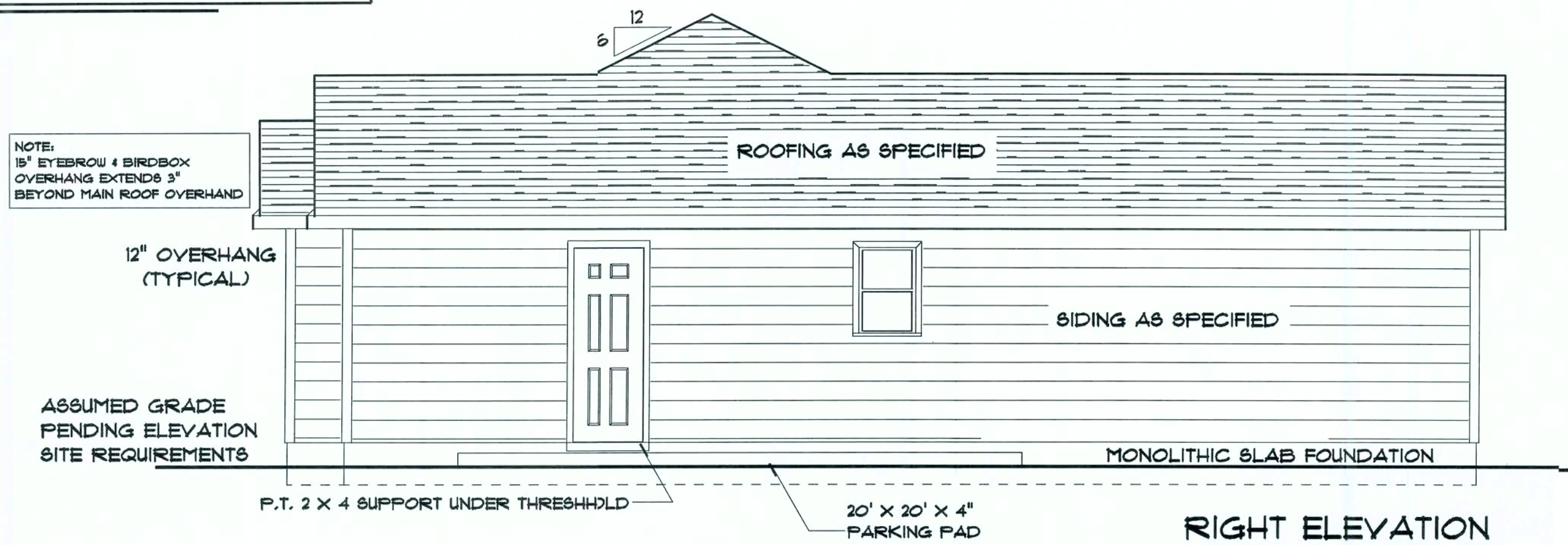
DRAWN BY: PLAN DATE: PAGE
BAA July 05, 2006 1

JOB # 06-04-0048

OF 9

REV.#	REV. DATE:	DRAWN BY:	DISCUPTION OF REVISION

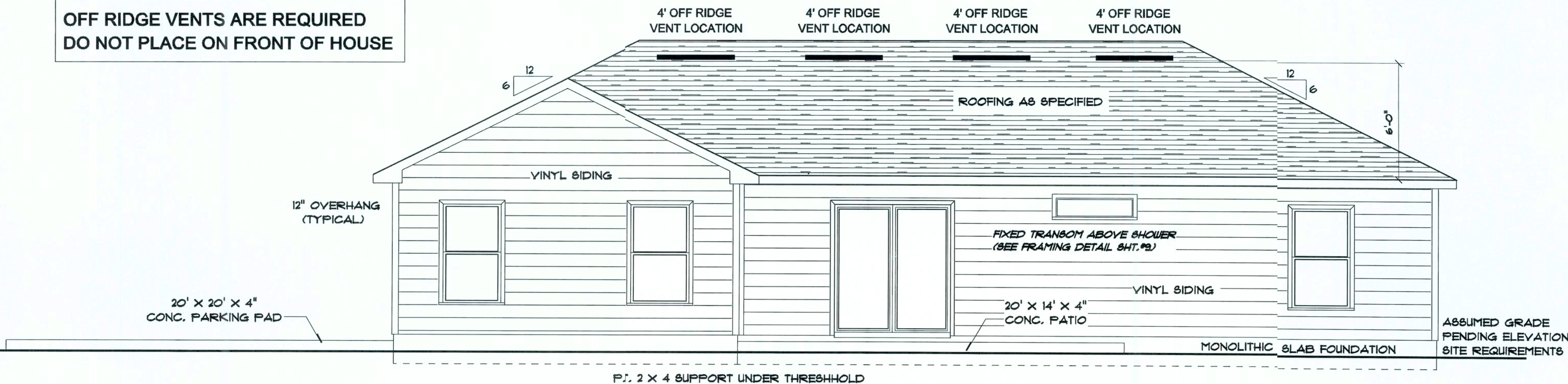
NOTE!:
REFER TO ENGINEERING FOR
SPECIFICATIONS AND CALCULATIONS.



RIGHT ELEVATION

ALLOW FOR MIN. 24" BETWEEN OFF RIDGE VENTS

OFF RIDGE VENTS ARE REQUIRED
DO NOT PLACE ON FRONT OF HOUSE



REAR ELEVATION

GROUND FLOOR:	1573
SECOND FLOOR:	N/A
OTHER:	N/A
TOTAL HEATED:	1573

PORCH:	106
GARAGE:	N/A
OTHER:	N/A
TOTAL U/R	1679

OUR SALES BROCHURES AND OTHER ADVERTISING LITERATURE ARE INTENDED TO GENERALLY REFLECT AND DEPICT THE STYLES AND QUALITY OF HOMES WE BUILD THROUGHOUT A PORTION OF THE UNITED STATES. OUR SALES MODELS ARE DESIGNED AND BUILT TO GENERALLY CONFORM WITH A VARIETY OF LOCAL CUSTOMS, PRACTICES, AND BUILDING CODES PREVALENT OR IN EFFECT IN THE IMMEDIATE AREA SURROUNDING THE LOCATION OF THOSE MODELS. THIS SET OF PLANS IS AN ACTUAL PART OF OUR CONTRACT WITH YOU AND, AS SUCH, IS INTENDED TO TAKE PRIORITY OVER ANYTHING IN CONFLICT WITH IT CONTAINED IN OUR ADVERTISING LITERATURE, OUR SALES MODELS AND EVEN OUR ORAL SALES PRESENTATION. NO CHANGE, MODIFICATION, OR REVISION OF THESE PRINTED PLANS SHALL BE BINDING ON THE PARTIES UNLESS SET FORTH ON THESE PLANS OR OTHERWISE REDUCED TO WRITING AND EXECUTED BY SAID PARTIES. PLEASE REVIEW THESE PLANS ALONG WITH "EXHIBIT B" OF YOUR CONTRACT CAREFULLY AND MAKE CERTAIN BEFORE YOU SIGN THEM THAT THEY ACCURATELY REPRESENT THE HOME YOU ARE PURCHASING. ADDITIONALLY, PENNYWORTH HOMES INC. HEREBY RESERVES THE RIGHT TO SUBSTITUTE MATERIALS OF EQUIVALENT QUALITY AND/OR TECHNIQUES OF ASSEMBLY AND/OR CONSTRUCTION METHODS FROM THAT CONTAINED IN THESE PLANS OR SPECIFIED IN EXHIBIT "B" WHERE NECESSARY TO ACCOMMODATE DIFFERENCES IN LOCAL CODES, GEOGRAPHIC CUSTOMS, OPTION SELECTION AND AVAILABILITY OF MATERIALS. ALL MATERIALS (LUMBER, OR OTHER BUILDING SUPPLIES) DELIVERED TO JOBSITE WHICH ARE IN EXCESS OF THOSE REQUIRED TO CONSTRUCT THE HOUSE AS AGREED REMAIN THE PROPERTY OF PENNYWORTH HOMES INC.

NOTE:
PENNYWORTH HOMES INC. RESERVES THE RIGHT TO ONLY MAKE CHANGES TO PLANS, REQUESTED BY BUYERS, THAT PENNYWORTH HOMES INC. DEEMS TO BE AESTHETICALLY, ARCHITECTURALLY, AND STRUCTURALLY SOUND.

THIS PLAN REFLECTS THE DESIGN AS PER BUYERS' FINAL APPROVED SIGNED PLANS DATED 5/11/2006. CHANGES MADE TO REPLICATE ENGINEERS NOTES AND CALCULATIONS.

CONSTRUCTION PLANS

SCALE: 1/4" = 1'-0"

DRAWN BY:	PLAN DATE:	PAGE
BAA	July 05, 2006	2
JOB # 06-04-0048		9

REV.#	REV. DATE:	DRAWN BY:	DISCRIPTION OF REVISION

NOTES:
ELECTRICAL/HVAC FIXTURES SHOWN ON THIS DRAWING
ARE LOCATED IN ACCORDANCE WITH PENNYWORTH
HOMES SPECIFICATIONS. DO NOT RELOCATE ANY
FIXTURE WITHOUT PRIOR APPROVAL FROM THE
CONSTRUCTION SUPERVISOR.

NOTE:
PENNYWORTH HOMES RESERVES THE RIGHT
TO MAKE CHANGES TO THE ELECTRICAL LAYOUT
TO MEET NECESSARY ELECTRICAL OR BUILDING CODES.
CHANGES MAY ALSO BE MADE AT THE DISCRETION
OF THE BUILDER OR ELECTRICIAN DUE TO HOUSE FRAMING
OR ELECTRICAL INSTALLATION TECHNIQUES.

Pennyworth Homes

Got Land? Let's Build!
PennyworthHomes.com FL-CRC068477

EXHIBIT "A"

PLAN: WESTWIND

CUSTOMER NAME:
MS. MARSHA JARRELL
HEATED LIVING AREA

GROUND FLOOR: 1573
SECOND FLOOR: N/A
OTHER: N/A
TOTAL HEATED: 1573

NON-HEATED
LIVING AREA

PORCH: 106
GARAGE: N/A
OTHER: N/A
TOTAL U/R 1679

**IMPORTANT-PLEASE READ
BELOW CAREFULLY**

OUR SALES BROCHURES AND OTHER ADVERTISING LIT-
ERATURE ARE INTENDED TO GENERALLY REFLECT AND
DEPICT THE STYLES AND QUALITY OF HOMES WE BUILD
THROUGHOUT A PORTION OF THE UNITED STATES. OUR
SALES MODELS ARE DESIGNED AND BUILT TO GENERALLY
CONFORM WITH A VARIETY OF LOCAL CUSTOMS, PRA-
CTICES, AND BUILDING CODES PREVALENT OR IN EFFECT
IN THE IMMEDIATE AREA SURROUNDING THE LOCATION
OF THOSE MODELS. THIS SET OF PLANS IS AN ACTUAL
PART OF OUR CONTRACT WITH YOU AND, AS SUCH, IS IN-
TENDED TO TAKE PRIORITY OVER ANYTHING IN CONFLICT
WITH IT CONTAINED IN OUR ADVERTISING LITERATURE.
OUR SALES MODELS AND EVEN OUR ORAL SALES PRESEN-
TATION. NO CHANGE, MODIFICATION, OR REVISION OF
THESE PRINTED PLANS SHALL BE BINDING ON THE
PARTIES UNLESS SET FORTH ON THESE PLANS OR OTHER-
WISE REDUCED TO WRITING AND EXECUTED BY SAID
PARTIES. PLEASE REVIEW THESE PLANS ALONG WITH
"EXHIBIT B" OF YOUR CONTRACT CAREFULLY AND MAKE
CERTAIN BEFORE YOU SIGN THEM THAT THEY ACCU-
RATELY REPRESENT THE HOME YOU ARE PURCHASING.
ADDITIONALLY, PENNYWORTH HOMES INC. HEREBY RESERVES
THE RIGHT TO SUBSTITUTE MATERIALS OF EQUIVALENT
QUALITY AND/OR TECHNIQUES OF ASSEMBLY AND/OR
CONSTRUCTION METHODS FROM THAT CONTAINED IN
THESE PLANS OR SPECIFIED IN EXHIBIT "B" WHERE NEC-
ESSARY TO ACCOMMODATE DIFFERENCES IN LOCAL CODES,
GEOGRAPHIC CUSTOMS, OPTION SELECTION AND AVAIL-
ABILITY OF MATERIALS. ALL MATERIALS (LUMBER, OR
OTHER BUILDING SUPPLIES) DELIVERED TO JOBSITE
WHICH ARE IN EXCESS OF THOSE REQUIRED TO CON-
STRUCT THE HOUSE AS AGREED REMAIN THE PROPERTY
OF PENNYWORTH HOMES INC.

NOTE:
PENNYWORTH HOMES INC. RESERVES
THE RIGHT TO ONLY MAKE CHANGES TO
PLANS, REQUESTED BY BUYERS, THAT
PENNYWORTH HOMES INC. DEEMS TO BE
AESTHETICALLY, ARCHITECTURALLY,
AND STRUCTURALLY SOUND.

THIS PLAN REFLECTS THE DESIGN
AS PER BUYERS' FINAL APPROVED
SIGNED PLANS DATED 5/11/2006
CHANGES MADE TO REPLICATE
ENGINEERS NOTES AND
CALCULATIONS.

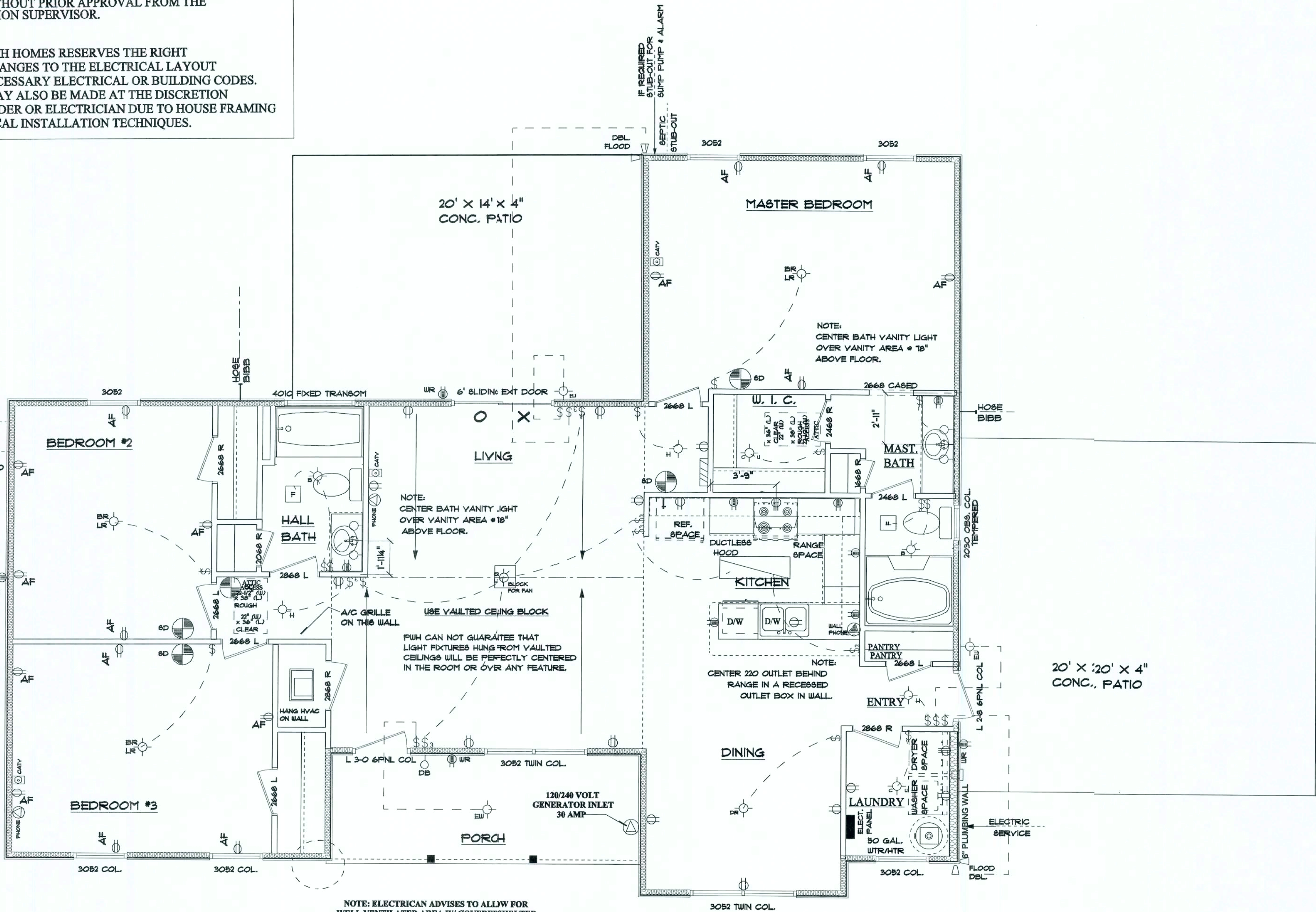
CONSTRUCTION PLANS

SCALE: 1/4" = 1'-0"

DRAWN BY: BAA PLAN DATE: July 05, 2006 PAGE 4

JOB # 06-04-0048

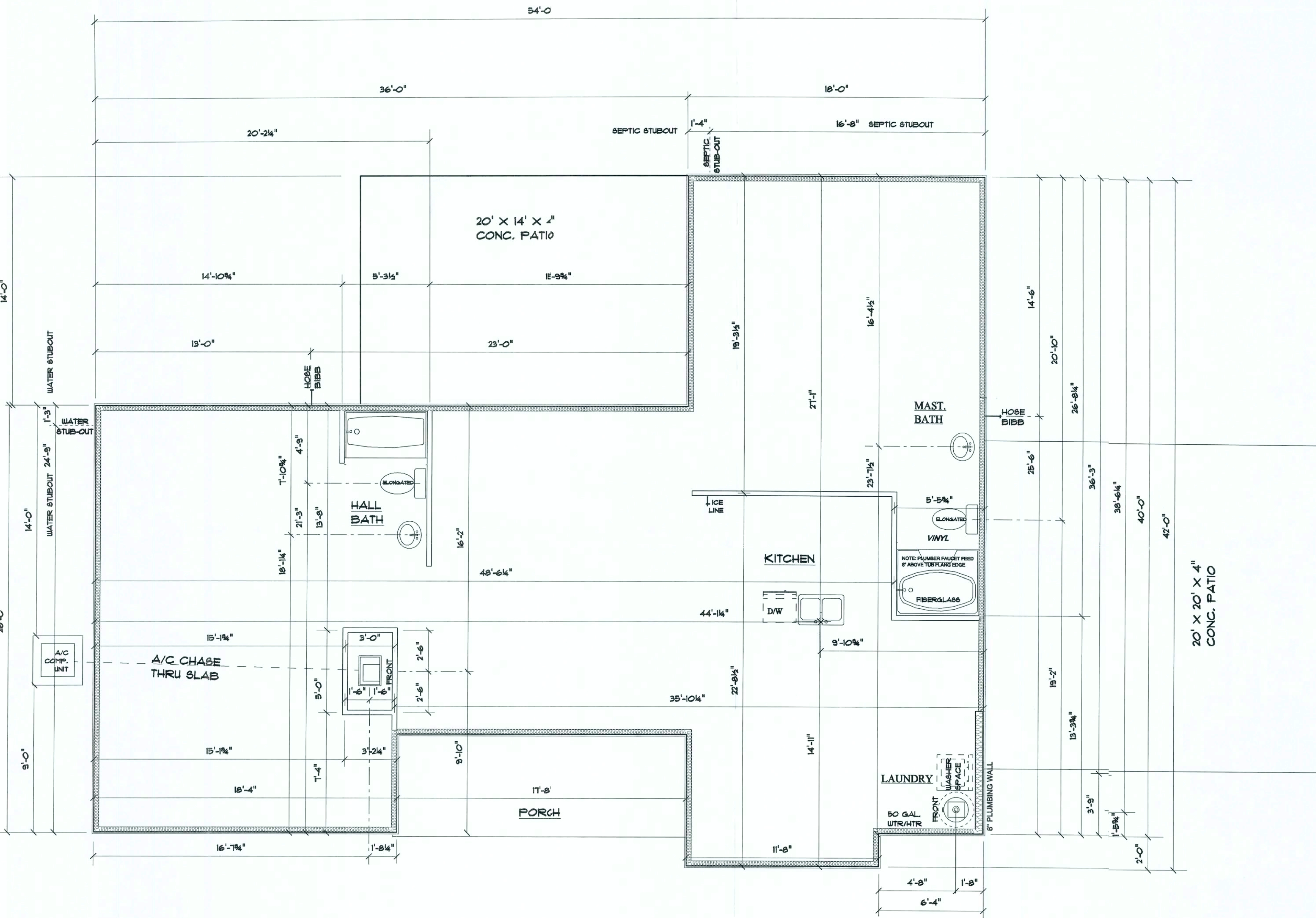
OF 9



ELECTRICAL SYMBOLS LEGEND

	LIVING ROOM/ BEDROOM BLOCK FOR FAN		EXTERIOR CEILING		SWITCH SINGLE POLE		GFI WR		CHIMES (7' ABOVE FLOOR)		CABLE T.V. JACK
	BATH (OVER MIRROR)		HALL FIXTURE		SWITCH THREE WAY		VISO PLATE		CHIMES BUTTON		ELECTRICAL PANEL
	BREAKFAST NOOK		EXTERIOR WALL		ARC FAULT		SMOKE DETECTOR		BATH FAN		RECESSED LIGHT
	BATH (MAIN)		EXTERIOR FLOOD		OUTLET		PHONE JACK		HANGING LIGHT FIXTURE		EYE BALL LIGHT
	CLOSET/ UTILITY FIXTURE		FOYER FIXTURE		SPLIT OUTLET		WALL PHONE JACK		UTILITY FLUORESCENT		CEILING FAN
	DINING ROOM		GARAGE/KEYLESS/ATTIC		220V OUTLET-RECESSED BOX		UTILITY FLUORESCENT (KITCHEN SINK)		4-BULB FLUORESCENT KITCHEN		
	KITCHEN SINK FIXTURE		LIVING ROOM/ BEDROOM FIXTURE		OUTLET GFI		RECESSED LIGHT (TUB / SHOWER)				
			KEYLESS FIXTURE, BLOCKED FOR FUTURE FAN		KEYLESS BLOCK FOR FAN		RECESSED LIGHT (KITCHEN SINK)				
			KEYLESS BLOCK FOR FUTURE FAN				RECESSED LIGHT (KITCHEN SINK)				

REV.# REV. DATE: DRAWN BY: DISCRIPTION OF REVISION



PLUMBING PLAN

Pennyworth Homes

Got Land? Let's Build!
PennyworthHomes.com FL-CRC068477

EXHIBIT "A"

PLAN: WESTWIND

CUSTOMER NAME: MS. MARSHA JARRELL

HEATED LIVING AREA

GROUND FLOOR: 1573

SECOND FLOOR: N/A

OTHER: N/A

TOTAL HEATED: 1573

NON-HEATED

LIVING AREA

PORCH: 106

GARAGE: N/A

OTHER: N/A

TOTAL U/R 1679

IMPORTANT-PLEASE READ

BELOW CAREFULLY

OUR SALES BROCHURES AND OTHER ADVERTISING LITERATURE ARE INTENDED TO GENERALLY REFLECT AND DEPICT THE STYLES AND QUALITY OF HOMES WE BUILD THROUGHOUT A PORTION OF THE UNITED STATES. OUR SALES MODELS ARE DESIGNED AND BUILT TO GENERALLY CONFORM WITH A VARIETY OF LOCAL CUSTOMS, PRACTICES, AND BUILDING CODES PREVALENT OR IN EFFECT IN THE IMMEDIATE AREA SURROUNDING THE LOCATION OF THOSE MODELS. THIS SET OF PLANS IS AN ACTUAL PART OF OUR CONTRACT WITH YOU AND, AS SUCH, IS INTENDED TO TAKE PRIORITY OVER ANYTHING IN CONFLICT WITH IT CONTAINED IN OUR ADVERTISING LITERATURE, OUR SALES MODELS AND EVEN OUR ORAL SALES PRESENTATION. NO CHANGE, MODIFICATION, OR REVISION OF THESE PRINTED PLANS SHALL BE BINDING ON THE PARTIES UNLESS SET FORTH ON THESE PLANS OR OTHERWISE REDUCED TO WRITING AND EXECUTED BY SAID PARTIES. PLEASE REVIEW THESE PLANS ALONG WITH "EXHIBIT B" OF YOUR CONTRACT CAREFULLY AND MAKE CERTAIN BEFORE YOU SIGN THEM THAT THEY ACCURATELY REPRESENT THE HOME YOU ARE PURCHASING. ADDITIONALLY, PENNYWORTH HOMES INC. HEREBY RESERVES THE RIGHT TO SUBSTITUTE MATERIALS OF EQUIVALENT QUALITY AND/OR TECHNIQUES OF ASSEMBLY AND/OR CONSTRUCTION METHODS FROM THAT CONTAINED IN THESE PLANS OR SPECIFIED IN EXHIBIT "B" WHERE NECESSARY TO ACCOMMODATE DIFFERENCES IN LOCAL CODES, GEOGRAPHIC CUSTOMS, OPTION SELECTION AND AVAILABILITY OF MATERIALS. ALL MATERIALS (LUMBER, OR OTHER BUILDING SUPPLIES) DELIVERED TO JOBSITE WHICH ARE IN EXCESS OF THOSE REQUIRED TO CONSTRUCT THE HOUSE AS AGREED REMAIN THE PROPERTY OF PENNYWORTH HOMES INC.

NOTE: PENNYWORTH HOMES INC. RESERVES THE RIGHT TO ONLY MAKE CHANGES TO PLANS, REQUESTED BY BUYERS, THAT PENNYWORTH HOMES INC. DEEMS TO BE AESTHETICALLY, ARCHITECTURALLY, AND STRUCTURALLY SOUND.

THIS PLAN REFLECTS THE DESIGN AS PER BUYERS' FINAL APPROVED SIGNED PLANS DATED 5/11/2006. CHANGES MADE TO REPLICATE ENGINEERS NOTES AND CALCULATIONS.

CONSTRUCTION PLANS

SCALE: 1/4" = 1'-0"

DRAWN BY: PLAN DATE: PAGE

BAA July 05, 2006 5

JOB # 06-04-0048 OF 9

REV.#	REV. DATE	DRAWN BY	DISCRIPTION OF REVISION

NOTE:
(AS REQUIRED BY CODE)

FIGURE AIR EXCHANGE:
AREA UNDER ROOF IS DIVIDED BY 300
(FOR EVERY 300 SQ.FT. UNDER ROOF =
1 SQ. FT. FREE AIR VENTILATION)

QUOTIENT DIVIDED BY 2 = (X).

(X) X 144 = TOTAL SQ. IN.
FREE AIR REQUIRED

RIDGE VENT SIZED BY 4' / 6' & 8' LN. FBET.
*CALCULATE NEEDED AIR EXCHANGE FOR
BOTH UPPER AND LOWER EXCHANGE.
*FIND AMOUNT OF AIR EXCHANGE PROVIDED
BY RIDGE VENTS PER LN. FT.

IF AMOUNT OF AIR EXCHANGE IS NOT
ENOUGH WITH JUST RIDGE VENTS FOR
UPPER AIR EXCHANGE AND SOFFIT VENTS
FOR LOWER AIR EXCHANGE.

THEN APPLY APROP. SIZE AND NUMBER OF
OFF RIDGE VENTS ACCORDING TO
AMOUNT OF TOTAL SQ. IN. OF FREE AIR REQUIRED.
*FIND AMOUNT OF AIR EXCHANGE PROVIDED
BY OFF RIDGE VENTS PER LN. FT.

ALL ROOFS WITH PITCHES BETWEEN
4/12 AND 2/12 ARE REQUIRED TO HAVE
A MIN. OF (2) LAYERS OF FELT PAPER
PER FLORIDA BUILDING CODE
SECTION 1507.3.8.1

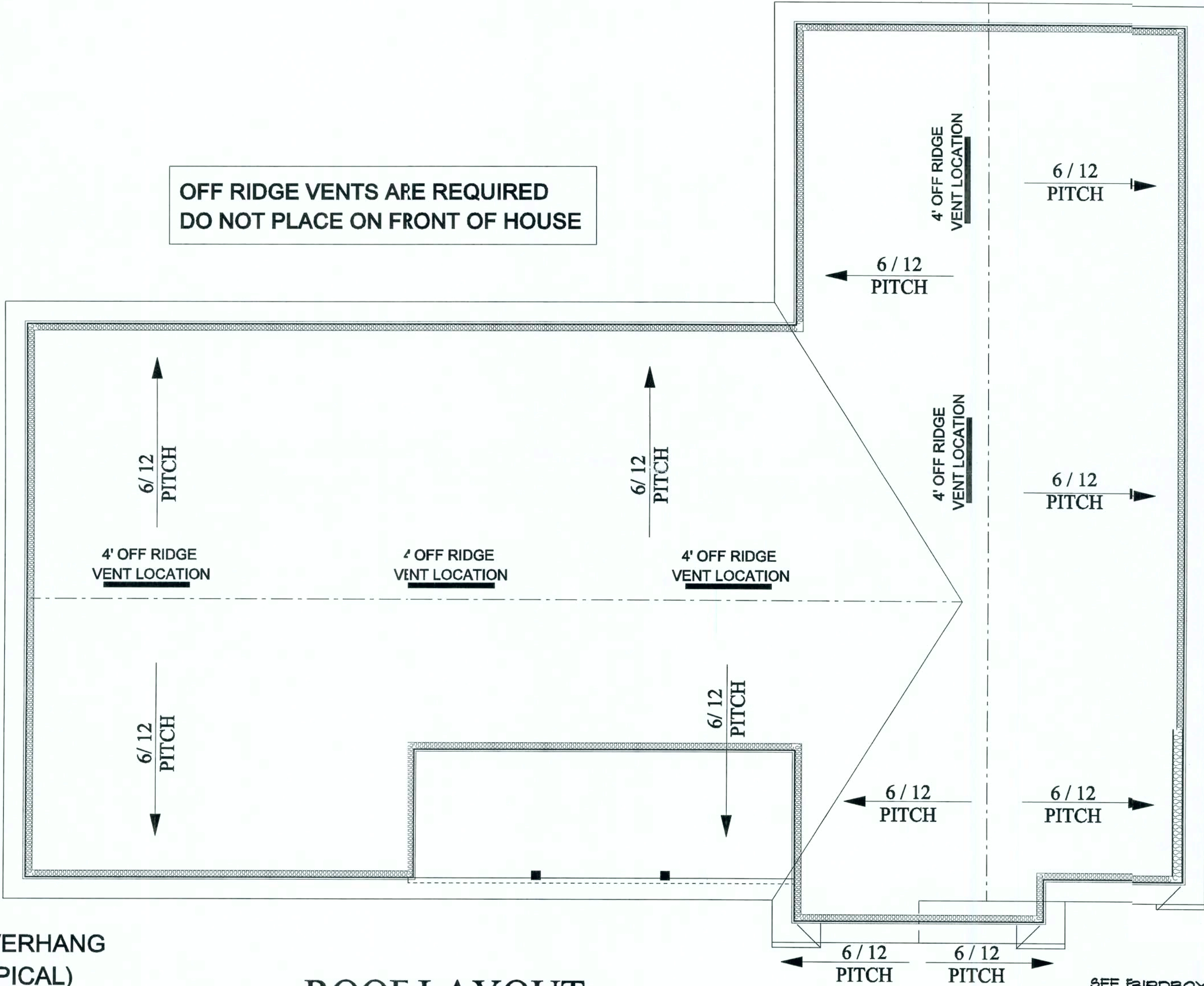
ROOF PITCHES ABOVE 4/12 ARE REQUIRED
TO HAVE A MIN. OF (1) LAYER OF FELT
PAPER PER FLORIDA BUILDING CODE
SECTION 1507.3.8.2

ALLOW FOR MIN. 24" BETWEEN OFF RIDGE VENTS

OFF RIDGE VENTS ARE REQUIRED
DO NOT PLACE ON FRONT OF HOUSE

12" OVERHANG
(TYPICAL)

ROOF LAYOUT



ROOF FELT OVER LAPS 19'
AT POINTS ON ROOF WHERE
PITCH CHANGES

PLAN: WESTWIND
CUSTOMER NAME: MS. MARSHA JARRELL

HEATED LIVING AREA

GROUND FLOOR: 1573
SECOND FLOOR: N/A
OTHER: N/A
TOTAL HEATED: 1573

NON-HEATED
LIVING AREA

PORCH: 106
GARAGE: N/A
OTHER: N/A
TOTAL U/R: 1679

IMPORTANT-PLEASE READ
BELOW CAREFULLY

OUR SALES BROCHURES AND OTHER ADVERTISING LITERATURE ARE INTENDED TO GENERALLY REFLECT AND DEPICT THE STYLES AND QUALITY OF HOMES WE BUILD THROUGHOUT A PORTION OF THE UNITED STATES. OUR SALES MODELS ARE DESIGNED AND BUILT TO GENERALLY CONFORM WITH A VARIETY OF LOCAL CUSTOMS, PRACTICES, AND BUILDING CODES PREVALENT OR IN EFFECT IN THE IMMEDIATE AREA SURROUNDING THE LOCATION OF THOSE MODELS. THIS SET OF PLANS IS AN ACTUAL PART OF OUR CONTRACT WITH YOU AND, AS SUCH, IS INTENDED TO TAKE PRIORITY OVER ANYTHING IN CONFLICT WITH IT CONTAINED IN OUR ADVERTISING LITERATURE, OUR SALES MODELS AND EVEN OUR ORAL SALES PRESENTATION. NO CHANGE, MODIFICATION, OR REVISION OF THESE PRINTED PLANS SHALL BE BINDING ON THE PARTIES UNLESS SET FORTH ON THESE PLANS OR OTHERWISE REDUCED TO WRITING AND EXECUTED BY SAID PARTIES. PLEASE REVIEW THESE PLANS ALONG WITH EXHIBIT "B" OF YOUR CONTRACT CAREFULLY AND MAKE CERTAIN BEFORE YOU SIGN THEM THAT THEY ACCURATELY REPRESENT THE HOME YOU ARE PURCHASING. ADDITIONALLY, PENNYWORTH HOMES INC. HEREBY RESERVES THE RIGHT TO SUBSTITUTE MATERIALS OF EQUIVALENT QUALITY AND/OR TECHNIQUES OF ASSEMBLY AND/OR CONSTRUCTION METHODS FROM THAT CONTAINED IN THESE PLANS OR SPECIFIED IN EXHIBIT "B" WHERE NECESSARY TO ACCOMMODATE DIFFERENCES IN LOCAL CODES, GEOGRAPHIC CUSTOMS, OPTION SELECTION AND AVAILABILITY OF MATERIALS. ALL MATERIALS (LUMBER, OR OTHER BUILDING SUPPLIES) DELIVERED TO JOBSITE WHICH ARE IN EXCESS OF THOSE REQUIRED TO CONSTRUCT THE HOUSE AS AGREED REMAIN THE PROPERTY OF PENNYWORTH HOMES INC.

NOTE:
PENNYWORTH HOMES INC. RESERVES THE RIGHT TO ONLY MAKE CHANGES TO PLANS, REQUESTED BY BUYERS, THAT PENNYWORTH HOMES INC. DEEMS TO BE AESTHETICALLY, ARCHITECTURALLY, AND STRUCTURALLY SOUND.

THIS PLAN REFLECTS THE DESIGN AS PER BUYERS' FINAL APPROVED SIGNED PLANS DATED 5/11/2006. CHANGES MADE TO REPLICATE ENGINEERS NOTES AND CALCULATIONS.

CONSTRUCTION PLANS

SCALE: 1/4" = 1'-0"

DRAWN BY: BAA
PLAN DATE: July 05, 2006
PAGE: 6 OF 9
JOB # 06-04-0048

REV.#	REV. DATE	DRAWN BY	DISCRIPTION OF REVISION

EXHIBIT "A"
PLAN: WESTWIND
CUSTOMER NAME: MS. MARSHA JARRELL
HEATED LIVING AREA

GROUND FLOOR: 1573
SECOND FLOOR: N/A
OTHER: N/A
TOTAL HEATED: 1573

NON-HEATED LIVING AREA
PORCH: 106
GARAGE: N/A
OTHER: N/A
TOTAL U/R: 1679

IMPORTANT-PLEASE READ BELOW CAREFULLY

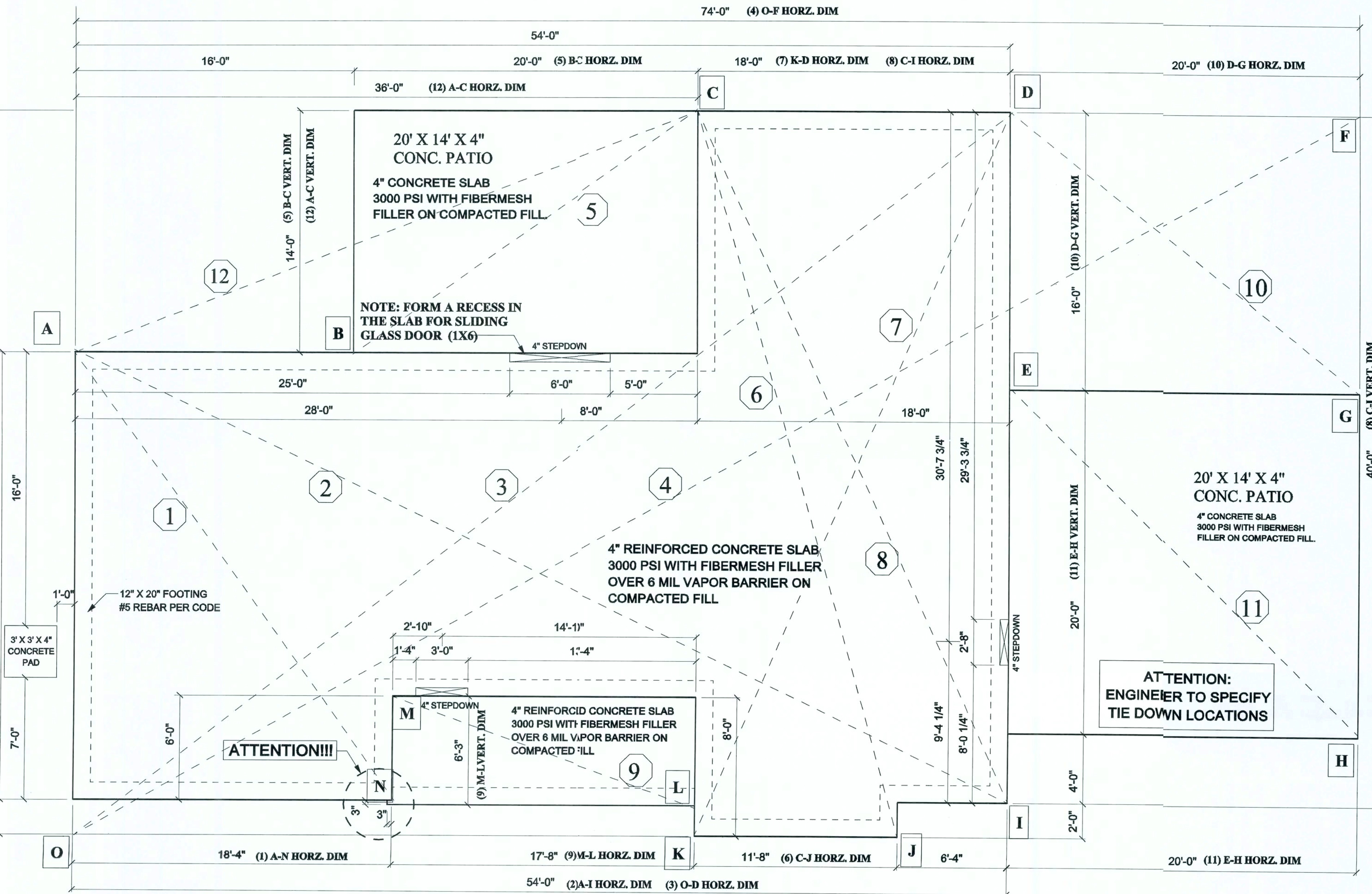
OUR SALES BROCHURES AND OTHER ADVERTISING LITERATURE ARE INTENDED TO GENERALLY REFLECT AND DEPICT THE STYLES AND QUALITY OF HOMES WE BUILD THROUGHOUT A PORTION OF THE UNITED STATES. OUR SALES MODELS ARE DESIGNED AND BUILT TO GENERALLY CONFORM WITH A VARIETY OF LOCAL CUSTOMS, PRACTICES, AND BUILDING CODES PREVALENT OR IN EFFECT IN THE IMMEDIATE AREA SURROUNDING THE LOCATION OF THOSE MODELS. THIS SET OF PLANS IS AN ACTUAL PART OF OUR CONTRACT WITH YOU AND, AS SUCH, IS INTENDED TO TAKE PRIORITY OVER ANYTHING IN CONFLICT WITH IT CONTAINED IN OUR ADVERTISING LITERATURE, OUR SALES MODELS AND EVEN OUR ORAL SALES PRESENTATION. NO CHANGE, MODIFICATION, OR REVISION OF THESE PRINTED PLANS SHALL BE BINDING ON THE PARTIES UNLESS SET FORTH ON THESE PLANS OR OTHERWISE REDUCED TO WRITING AND EXECUTED BY SAID PARTIES. PLEASE REVIEW THESE PLANS ALONG WITH "EXHIBIT B" OF YOUR CONTRACT CAREFULLY AND MAKE CERTAIN BEFORE YOU SIGN THEM THAT THEY ACCURATELY REPRESENT THE HOME YOU ARE PURCHASING. ADDITIONALLY, PENNYWORTH HOMES INC. HEREBY RESERVES THE RIGHT TO SUBSTITUTE MATERIALS OF EQUIVALENT QUALITY AND/OR TECHNIQUES OF ASSEMBLY AND/OR CONSTRUCTION METHODS FROM THAT CONTAINED IN THESE PLANS OR SPECIFIED IN EXHIBIT "B" WHERE NECESSARY TO ACCOMMODATE DIFFERENCES IN LOCAL CODES, GEOGRAPHIC CUSTOMS, OPTION SELECTION AND AVAILABILITY OF MATERIALS. ALL MATERIALS (LUMBER, OR OTHER BUILDING SUPPLIES) DELIVERED TO JOBSITE WHICH ARE IN EXCESS OF THOSE REQUIRED TO CONSTRUCT THE HOUSE AS AGREED REMAIN THE PROPERTY OF PENNYWORTH HOMES INC.

NOTE: PENNYWORTH HOMES INC. RESERVES THE RIGHT TO ONLY MAKE CHANGES TO PLANS, REQUESTED BY BUYERS, THAT PENNYWORTH HOMES INC. DEEMS TO BE AESTHETICALLY, ARCHITECTURALLY, AND STRUCTURALLY SOUND.

THIS PLAN REFLECTS THE DESIGN AS PER BUYERS' FINAL APPROVED SIGNED PLANS DATED 5/11/2006. CHANGES MADE TO REPLICATE ENGINEERS NOTES AND CALCULATIONS.

SCALE: 1/4" = 1' 0"
DRAWN BY: BAA
PLAN DATE: July 05, 2006
PAGE: 7 OF 9
JOB # 06-04-0048

- | | | | |
|--|---|--|---|
| ① (A-N) 26'-0" VERT. / 18'-4" HORIZ.
= DIAGONAL DISTANCE: 31'-9-3/4" | ④ (O-F) 42'-0" VERT. / 74'-0" HORIZ.
= DIAGONAL DISTANCE: 85'-1" | ⑦ (K-D) 42'-0" VERT. / 18'-0" HORIZ.
= DIAGONAL DISTANCE: 42'-9" | ⑩ (D-G) 16'-0" VERT. / 20'-0" HORIZ.
= DIAGONAL DISTANCE: 25'-7-3/8" |
| ② (A-I) 26'-0" VERT. / 54'-0" HORIZ.
= DIAGONAL DISTANCE: 59'-11-1/4" | ⑤ (B-C) 14'-0" VERT. / 20'-0" HORIZ.
= DIAGONAL DISTANCE: 24'-5" | ⑧ (C-I) 40'-0" VERT. / 18'-0" HORIZ.
= DIAGONAL DISTANCE: 43'-10-3/8" | ⑪ (E-H) 20'-0" VERT. / 20'-0" HORIZ.
= DIAGONAL DISTANCE: 28'-3-3/8" |
| ③ (O-D) 42'-0" VERT. / 54'-0" HORIZ.
= DIAGONAL DISTANCE: 68'-4-7/8" | ⑥ (C-J) 42'-0" VERT. / 11'-8" HORIZ.
= DIAGONAL DISTANCE: 43'-7-1/8" | ⑨ (N-L) 6'-3" VERT. / 17'-8" HORIZ.
= DIAGONAL DISTANCE: 18'-8-7/8" | ⑫ (A-C) 14'-0" VERT. / 20'-0" HORIZ.
= DIAGONAL DISTANCE: 24'-5" |

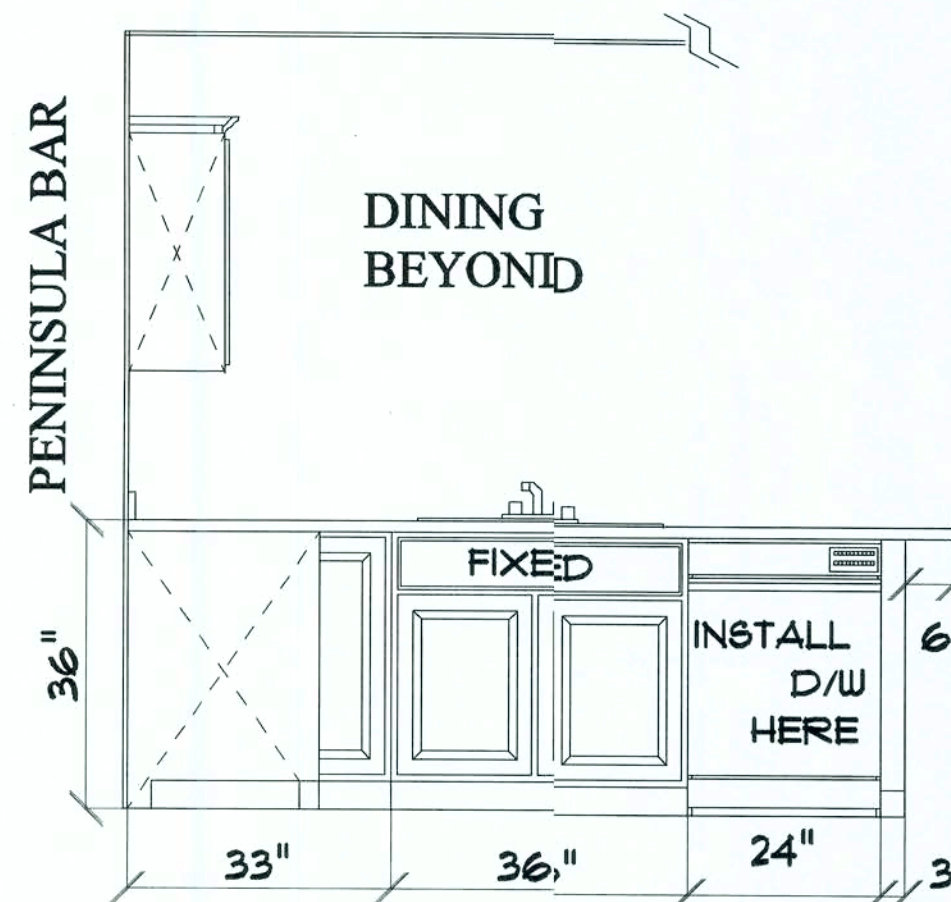
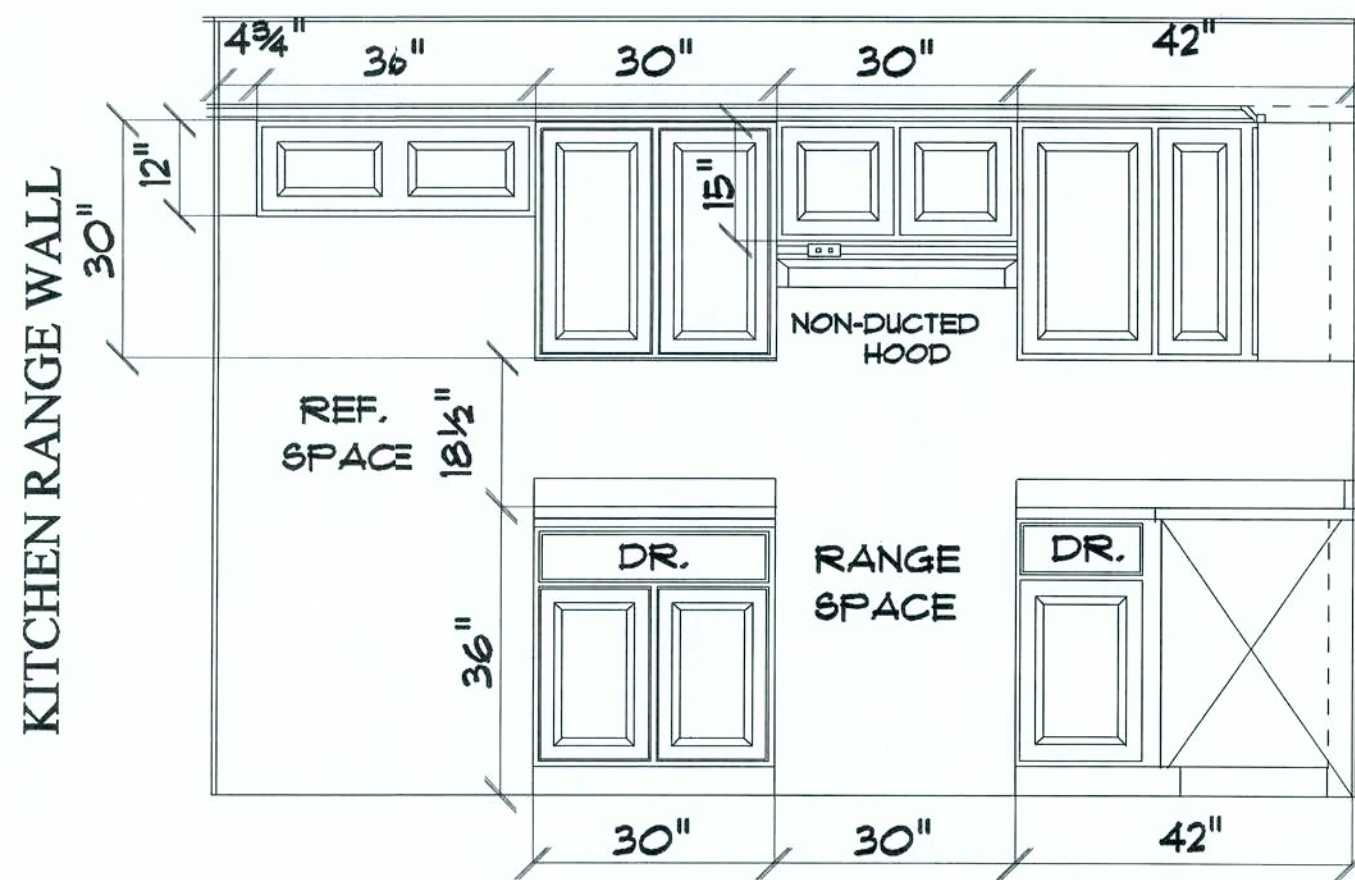
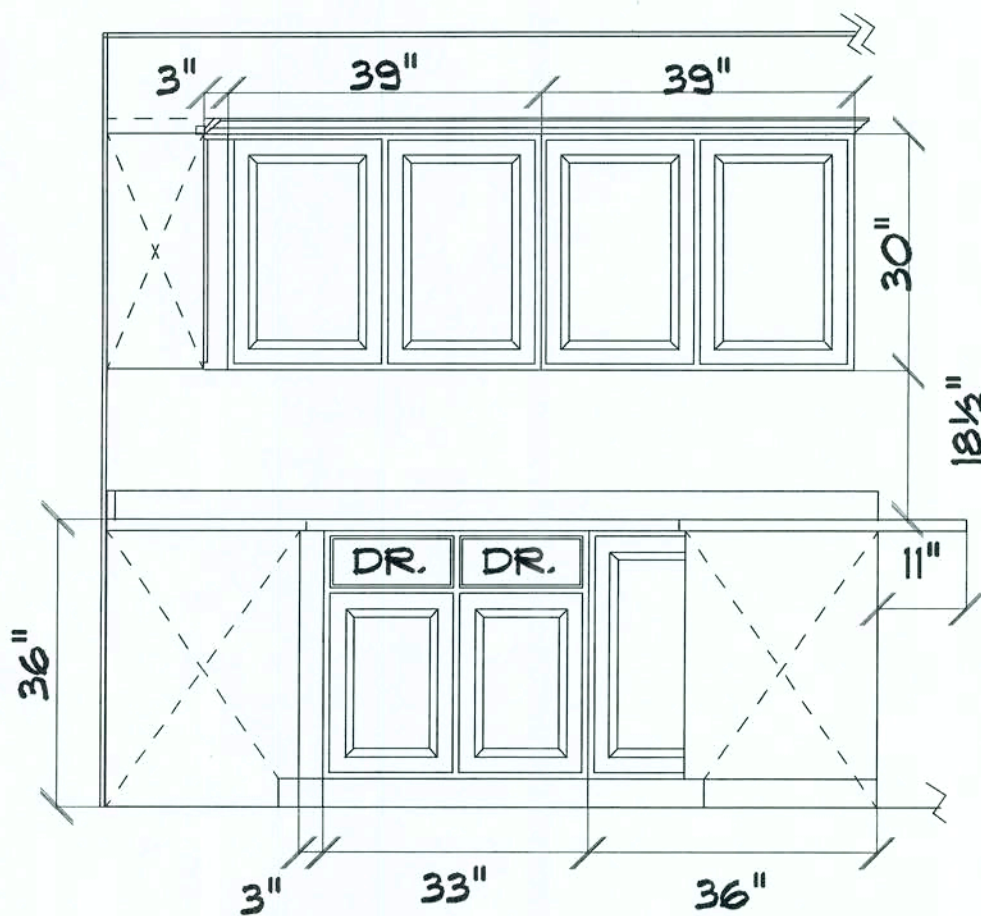


NOTE!:
REFER TO ENGINEERING FOR SPECIFICATIONS AND CALCULATIONS.

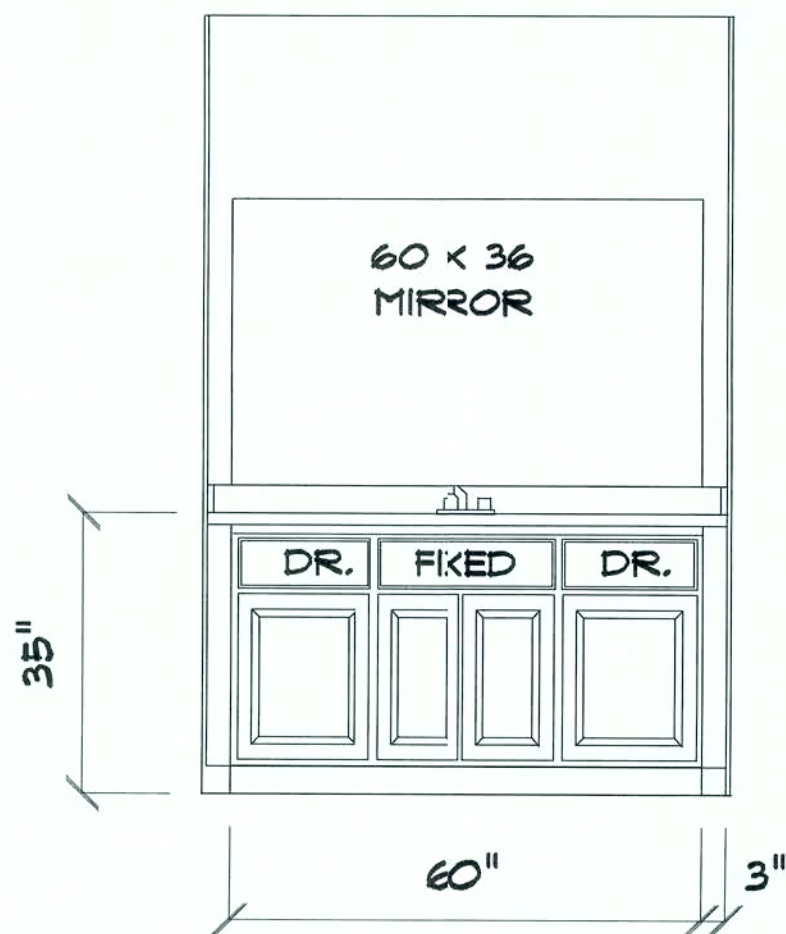
FOUNDATION PLAN

REV.#	REV. DATE:	DRAWN BY:	DISCRIPTION OF REVISION

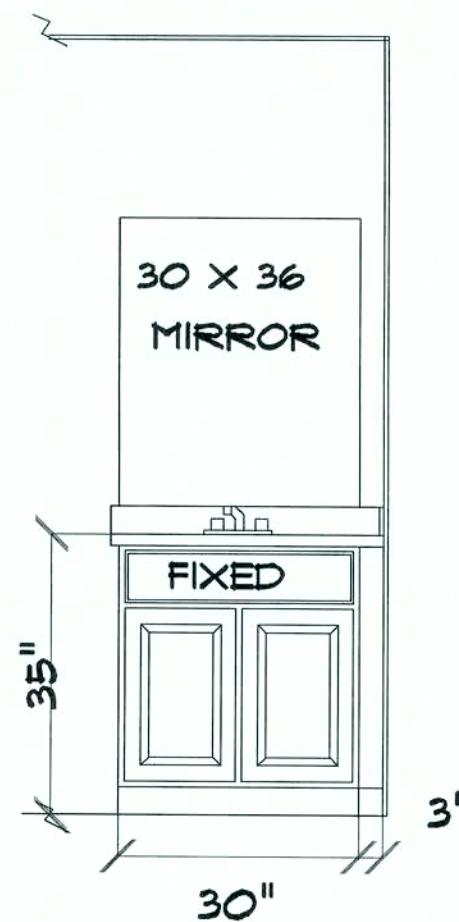
CABINETS ARE SYMBOLIC,
ACTUAL UNITS MAY VARI
IN STYLE *TO BE DETERMINED BY
BUYER.



KITCHEN CABINET ELEVATIONS



MASTER BATH



HALL BATH

OUR SALES BROCHURES AND OTHER ADVERTISING LITERATURE ARE INTENDED TO GENERALLY REFLECT AND DEPICT THE STYLES AND QUALITY OF HOMES WE BUILD THROUGHOUT A PORTION OF THE UNITED STATES. OUR SALES MODELS ARE DESIGNED AND BUILT TO GENERALLY CONFORM WITH A VARIETY OF LOCAL CUSTOMS, PRACTICES, AND BUILDING CODES PREVALENT OR IN EFFECT IN THE IMMEDIATE AREA SURROUNDING THE LOCATION OF THOSE MODELS. THIS SET OF PLANS IS AN ACTUAL PART OF OUR CONTRACT WITH YOU AND, AS SUCH, IS INTENDED TO TAKE PRIORITY OVER ANYTHING IN CONFLICT WITH IT CONTAINED IN OUR ADVERTISING LITERATURE. OUR SALES MODELS AND EVEN OUR ORAL SALES PRESENTATION. NO CHANGE, MODIFICATION, OR REVISION OF THESE PRINTED PLANS SHALL BE BINDING ON THE PARTIES UNLESS SET FORTH ON THESE PLANS OR OTHERWISE REDUCED TO WRITING AND EXECUTED BY SAID PARTIES. PLEASE REVIEW THESE PLANS ALONG WITH "EXHIBIT B" OF YOUR CONTRACT CAREFULLY AND MAKE CERTAIN BEFORE YOU SIGN THEM THAT THEY ACCURATELY REPRESENT THE HOME YOU ARE PURCHASING. ADDITIONALLY, PENNYWORTH HOMES INC. HEREBY RESERVES THE RIGHT TO SUBSTITUTE MATERIALS OF EQUIVALENT QUALITY AND/OR TECHNIQUES OF ASSEMBLY AND/OR CONSTRUCTION METHODS FROM THAT CONTAINED IN THESE PLANS OR SPECIFIED IN EXHIBIT "B" WHERE NECESSARY TO ACCOMMODATE DIFFERENCES IN LOCAL CODES, GEOGRAPHIC CUSTOMS, OPTION SELECTION AND AVAILABILITY OF MATERIALS. ALL MATERIALS (LUMBER, OR OTHER BUILDING SUPPLIES) DELIVERED TO JOBSITE WHICH ARE IN EXCESS OF THOSE REQUIRED TO CONSTRUCT THE HOUSE AS AGREED REMAIN THE PROPERTY OF PENNYWORTH HOMES INC.

NOTE:
PENNYWORTH HOMES INC. RESERVES THE RIGHT TO ONLY MAKE CHANGES TO PLANS, REQUESTED BY BUYERS, THAT PENNYWORTH HOMES INC. DEEMS TO BE AESTHETICALLY, ARCHITECTURALLY, AND STRUCTURALLY SOUND.

THIS PLAN REFLECTS THE DESIGN AS PER BUYERS' FINAL APPROVED SIGNED PLANS DATED 5/11/2006. CHANGES MADE TO REPLICATE ENGINEERS NOTES AND CALCULATIONS.

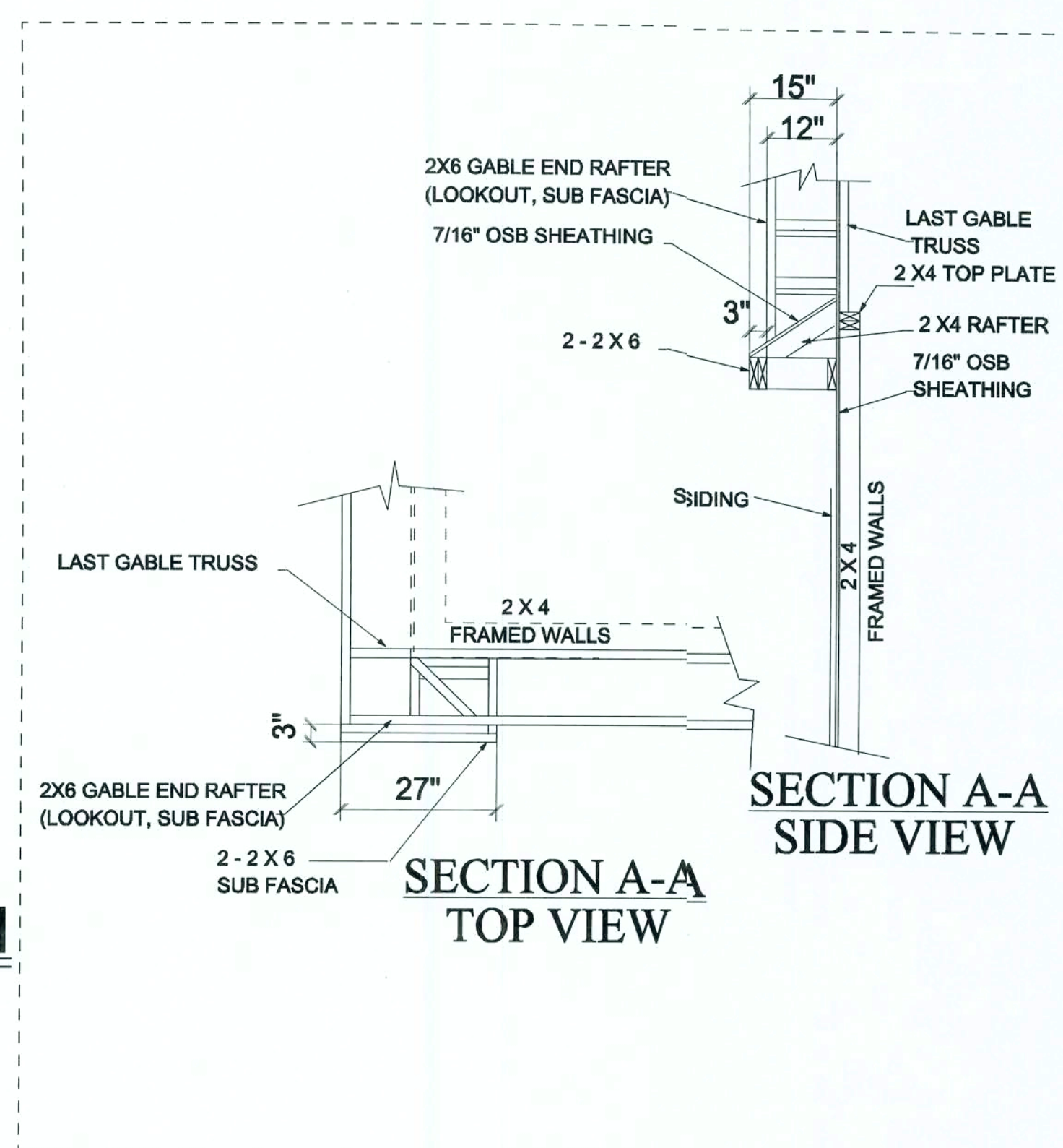
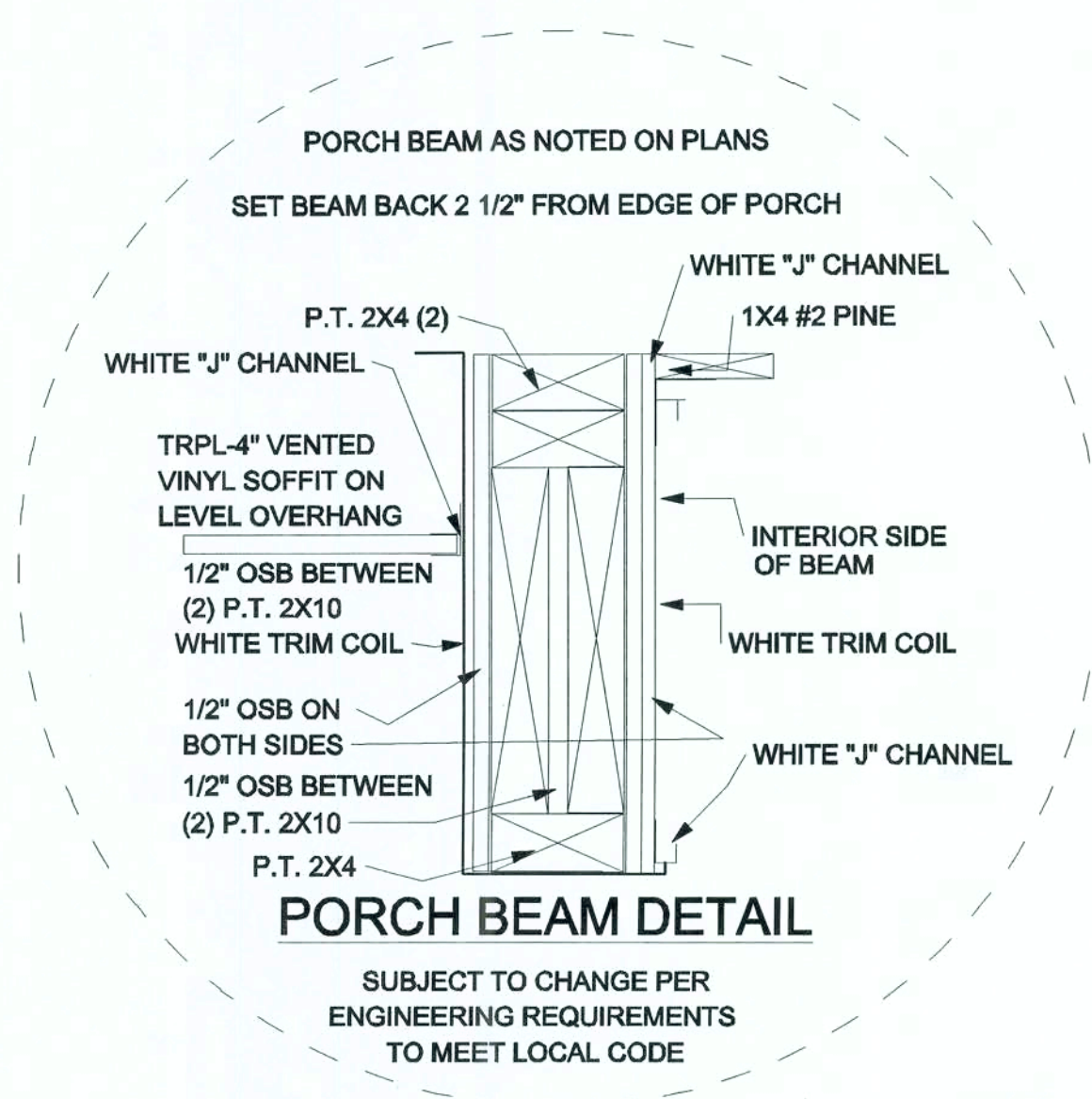
CONSTRUCTION PLANS

SCALE: 1/2" = 1'-0"

DRAWN BY: PLAN DATE: PAGE
BAA July 05, 2006 8

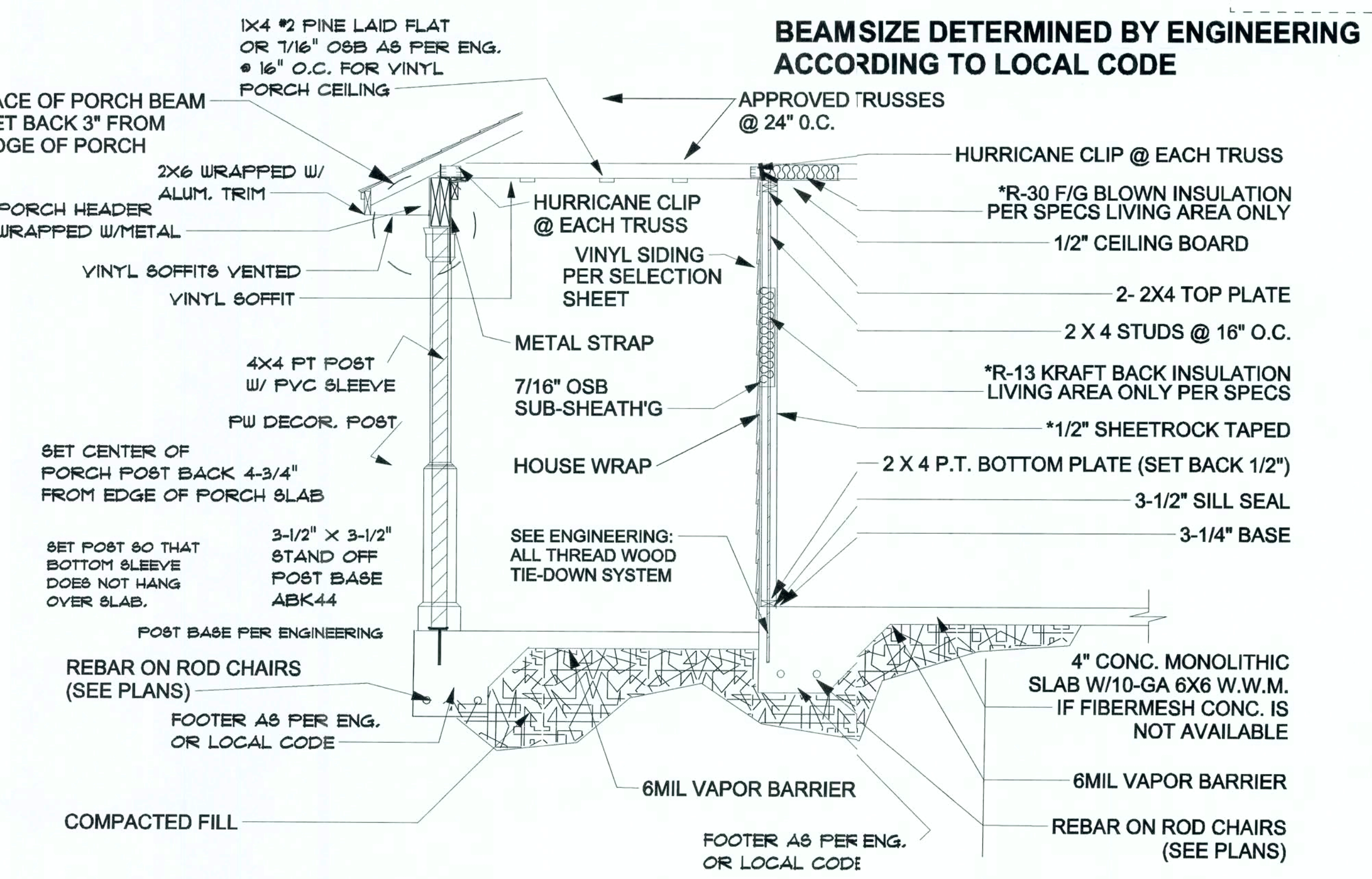
JOB # 06-04-0048 OF 9

REV.#	REV. DATE:	DRAWN BY:	DISCRIPTION OF REVISION



PENNYWORTH HOMES TYPICAL WALL SECTION FOR MONOLITHIC SLAB

NOTE: SEE FOUNDATION PLAN FOR FOUNDATION SPECIFICATIONS.



NOTE:
ALL METAL PRODUCTS USED ON
PRESSURE TREATED LUMBER
MUST BE HOT DIPPED GALVANIZED
TO PREVENT DETERIORATION.

Pennyworth Homes
Got Land? Let's Build!
PennyworthHomes.com FL-CRC098477

EXHIBIT "A"

PLAN: WESTWIND

CUSTOMER NAME: MS. MARSHA JARRELL

HEATED LIVING AREA

GROUND FLOOR:	1573
SECOND FLOOR:	N/A
OTHER:	N/A
TOTAL HEATED:	1573

NON-HEATED LIVING AREA

PORCH:	106
GARAGE:	N/A
OTHER:	N/A
TOTAL U/R	1679

IMPORTANT-PLEASE READ BELOW CAREFULLY

OUR SALES BROCHURES AND OTHER ADVERTISING LITERATURE ARE INTENDED TO GENERALLY REFLECT AND DEPICT THE STYLES AND QUALITY OF HOMES WE BUILD THROUGHOUT A PORTION OF THE UNITED STATES. OUR SALES MODELS ARE DESIGNED AND BUILT TO GENERALLY CONFORM WITH A VARIETY OF LOCAL CUSTOMS, PRACTICES, AND BUILDING CODES PREVALENT OR IN EFFECT IN THE IMMEDIATE AREA SURROUNDING THE LOCATION OF THOSE MODELS. THIS SET OF PLANS IS AN ACTUAL PART OF OUR CONTRACT WITH YOU AND, AS SUCH, IS INTENDED TO TAKE PRIORITY OVER ANYTHING IN CONFLICT WITH IT CONTAINED IN OUR ADVERTISING LITERATURE, OUR SALES MODELS AND EVEN OUR ORAL SALES PRESENTATION. NO CHANGE, MODIFICATION, OR REVISION OF THESE PRINTED PLANS SHALL BE BINDING ON THE PARTIES UNLESS SET FORTH ON THESE PLANS OR OTHERWISE REDUCED TO WRITING AND EXECUTED BY SAID PARTIES. PLEASE REVIEW THESE PLANS ALONG WITH "EXHIBIT B" OF YOUR CONTRACT CAREFULLY AND MAKE CERTAIN BEFORE YOU SIGN THEM THAT THEY ACCURATELY REPRESENT THE HOME YOU ARE PURCHASING. ADDITIONALLY, PENNYWORTH HOMES INC. HEREBY RESERVES THE RIGHT TO SUBSTITUTE MATERIALS OF EQUIVALENT QUALITY AND/OR TECHNIQUES OF ASSEMBLY AND/OR CONSTRUCTION METHODS FROM THAT CONTAINED IN THESE PLANS OR SPECIFIED IN EXHIBIT "B" WHERE NECESSARY TO ACCOMMODATE DIFFERENCES IN LOCAL CODES, GEOGRAPHIC CUSTOMS, OPTION SELECTION AND AVAILABILITY OF MATERIALS. ALL MATERIALS (LUMBER, OR OTHER BUILDING SUPPLIES) DELIVERED TO JOBSITE WHICH ARE IN EXCESS OF THOSE REQUIRED TO CONSTRUCT THE HOUSE AS AGREED REMAIN THE PROPERTY OF PENNYWORTH HOMES INC.

NOTE:
PENNYWORTH HOMES INC. RESERVES THE RIGHT TO ONLY MAKE CHANGES TO PLANS, REQUESTED BY BUYERS, THAT PENNYWORTH HOMES INC. DEEMS TO BE AESTHETICALLY, ARCHITECTURALLY, AND STRUCTURALLY SOUND.

THIS PLAN REFLECTS THE DESIGN AS PER BUYERS' FINAL APPROVED SIGNED PLANS DATED 5/11/2006

CHANGES MADE TO REPLICATE ENGINEERS NOTES AND CALCULATIONS.

CONSTRUCTION PLANS

SCALE: 1/2" = 1'-0"

DRAWN BY:	PLAN DATE:	PAGE
BAA	July 05, 2006	9

JOB # 06-04-0048 OF 9

REV.#	REV. DATE:	DRAWN BY:	DISCRIPTION OF REVISION

SUBJECT TO CHANGE WITHOUT NOTICE BY PENNYWORTH HOMES

WINDOW SCHEDULE				
QTY	CALLOUT SIZE	MANUFACT.	SERIES	ROUGH OPENING
1	2030 OBS. TEMPERED	SILVERLINE	2900	BY MANUFACTURER
1	4010 FIXED TRANSOM	SILVERLINE	2900	BY MANUFACTURER
2	3052 COL. TWINS	SILVERLINE	2900	BY MANUFACTURER
1	3052 COL. TEMPERED	SILVERLINE	2900	BY MANUFACTURER
2	3052 COL.	SILVERLINE	2900	BY MANUFACTURER
1	3052 TEMPERED	SILVERLINE	2900	BY MANUFACTURER
2	3052	SILVERLINE	2900	BY MANUFACTURER

INT. DOOR SCHEDULE			MANUFACTURER
QTY	CALLOUT SIZE	ROUGH OPENING	
1	1668-R	20" X 82-1/2"	
1	2068-R	28" X 82-1/2"	
1	2468-L	30" X 82-1/2"	
1	2468-R	30" X 82-1/2"	
5	2668-L	32" X 82-1/2"	
1	2668-R	32" X 82-1/2"	
2	2868-R	34" X 82-1/2"	
1	2868-L	34" X 82-1/2"	
1	2668 CASD	32" X 82-1/2"	

NOTE:
ALL INTERIOR DOORS
TO HAVE 82-1/2" R.O.
HEIGHT FROM FINISHED
FLOOR.

NOTE:
ALL WINDOWS TO BE VINYL

NOTE: BUILDER IS TO CONFIRM
ROUGH OPENINGS BEFORE FRAMING.

EXT. DOOR SCHEDULE			MANUFACTURER
EXT. UNITS	MANUFACT.	SERIES	ROUGH OPENING
1	L 3/0 8F PNL COL (IN-SWING)	SMOOTH FIBERGLASS	38-1/2" X 82-1/2"
1	6068 PATIO (R)	SMOOTH FIBERGLASS	74-1/2" X 82-1/2"
1	L 2/8 8F PNL COL (OUT-SWING)	SMOOTH FIBERGLASS	34-1/2" X 82-1/2"

Pennyworth Homes
Got Land? Let's Build!
PennyworthHomes.com

EXHIBIT "A"
PLAN: WESTWIND
CUSTOMER NAME: MS. MARSHA JARRELL

HEATED LIVING AREA
GROUND FLOOR: 1573
SECOND FLOOR: N/A
OTHER: N/A
TOTAL HEATED: 1573

NON-HEATED
LIVING AREA
PORCH: 106
GARAGE: N/A
OTHER: N/A
TOTAL U/R: 1679

IMPORTANT-PLEASE READ
BELOW CAREFULLY

OUR SALES BROCHURES AND OTHER ADVERTISING LITERATURE ARE INTENDED TO GENERALLY REFLECT AND DEPICT THE STYLES AND QUALITY OF HOMES WE BUILD THROUGHOUT A PORTION OF THE UNITED STATES. OUR SALES MODELS ARE DESIGNED AND BUILT TO GENERALLY CONFORM WITH A VARIETY OF LOCAL CUSTOMS, PRACTICES, AND BUILDING CODES PREVALENT OR IN EFFECT IN THE IMMEDIATE AREA SURROUNDING THE LOCATION OF THOSE MODELS. THIS SET OF PLANS IS AN ACTUAL PART OF OUR CONTRACT WITH YOU AND, AS SUCH, IS INTENDED TO TAKE PRIORITY OVER ANYTHING IN CONFLICT WITH IT CONTAINED IN OUR ADVERTISING LITERATURE. OUR SALES MODELS AND EVEN OUR ORAL SALES PRESENTATION. NO CHANGE, MODIFICATION, OR REVISION OF THESE PRINTED PLANS SHALL BE BINDING ON THE PARTIES UNLESS SET FORTH ON THESE PLANS OR OTHERWISE REDUCED TO WRITING AND EXECUTED BY SAID PARTIES. PLEASE REVIEW THESE PLANS ALONG WITH "EXHIBIT B" OF YOUR CONTRACT CAREFULLY AND MAKE CERTAIN BEFORE YOU SIGN THEM THAT THEY ACCURATELY REPRESENT THE HOME YOU ARE PURCHASING. ADDITIONALLY, PENNYWORTH HOMES INC. HEREBY RESERVES THE RIGHT TO SUBSTITUTE MATERIALS OF EQUIVALENT QUALITY AND/OR TECHNIQUES OF ASSEMBLY AND/OR CONSTRUCTION METHODS FROM THAT CONTAINED IN THESE PLANS OR SPECIFIED IN EXHIBIT "B" WHERE NECESSARY TO ACCOMMODATE DIFFERENCES IN LOCAL CODES, GEOGRAPHIC CUSTOMS, OPTION SELECTION AND AVAILABILITY OF MATERIALS. ALL MATERIALS (LUMBER, OR OTHER BUILDING SUPPLIES) DELIVERED TO JOBSITE WHICH ARE IN EXCESS OF THOSE REQUIRED TO CONSTRUCT THE HOUSE AS AGREED REMAIN THE PROPERTY OF PENNYWORTH HOMES INC.

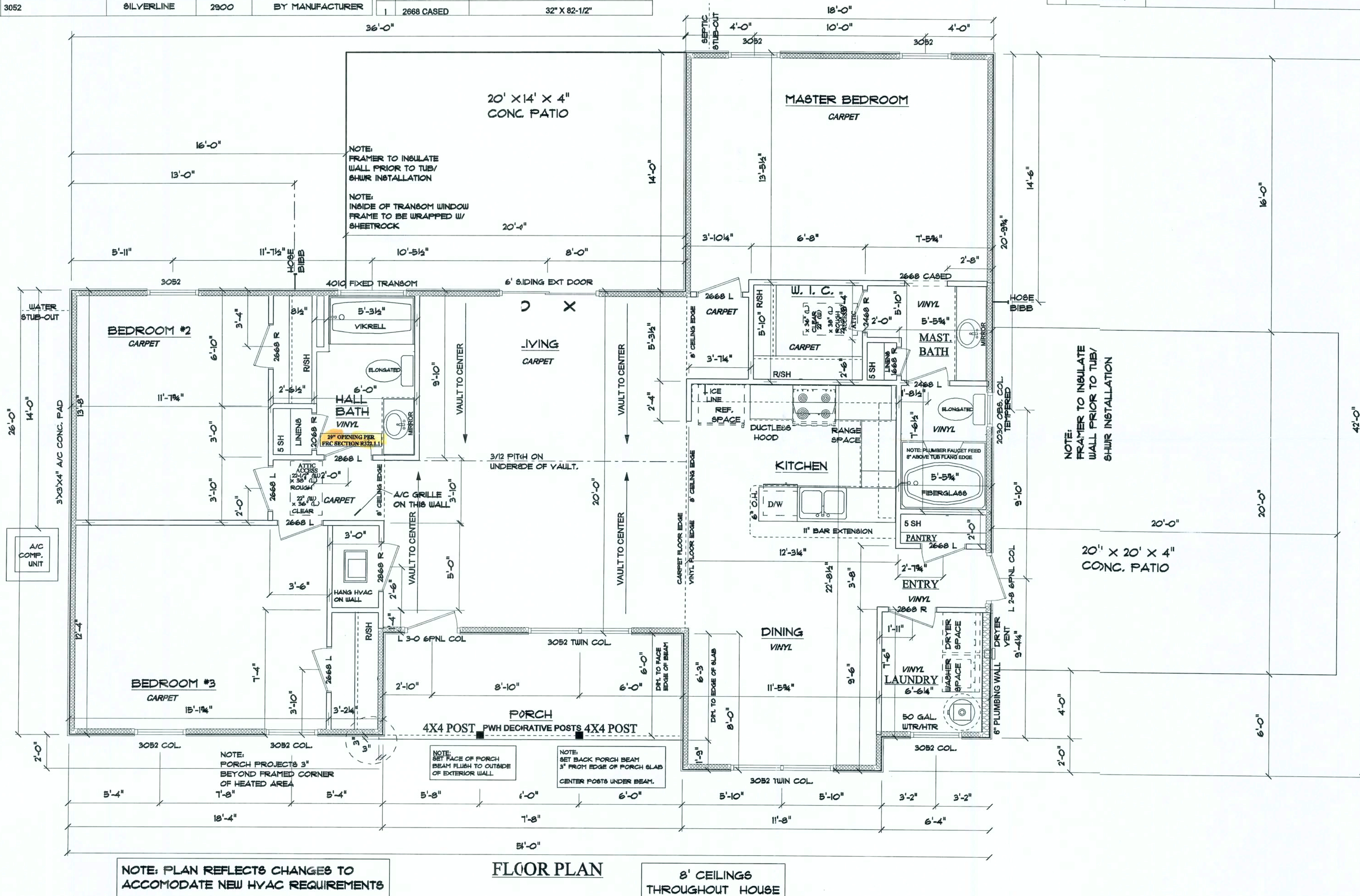
NOTE:
PENNYWORTH HOMES INC. RESERVES THE RIGHT TO ONLY MAKE CHANGES TO PLANS, REQUESTED BY BUYERS, THAT PENNYWORTH HOMES INC. DEEMS TO BE AESTHETICALLY, ARCHITECTURALLY, AND STRUCTURALLY SOUND.

THIS PLAN REFLECTS THE DESIGN AS PER BUYERS' FINAL APPROVED SIGNED PLANS DATED 5/11/2006. CHANGES MADE TO REPLICATE ENGINEERS NOTES AND CALCULATIONS.

CONSTRUCTION PLANS

SCALE: 1/4" = 1'-0"

DRAWN BY: BAA
PLAN DATE: July 13, 2006
PAGE 3 OF 9
JOB # 06-04-0048



NOTE: PLAN REFLECTS CHANGES TO
ACCOMMODATE NEW HVAC REQUIREMENTS

FLOOR PLAN

8' CEILINGS
THROUGHOUT HOUSE

NOTE!:
REFER TO ENGINEERING FOR
SPECIFICATIONS AND CALCULATIONS.

NOTE:
BUILDING HEIGHT = 19'

NOTE:
ONE WINDOW IN EACH BEDROOM WILL SERVE AS
AN EMERGENCY ESCAPE AND RESCUE OPENINGS

REV. #	REV. DATE	DRAWN BY	DESCRIPTION OF REVISION

NOTE: ANYWORTH HOMES RESERVES THE RIGHT MAKE CHANGES TO THE ELECTRICAL LAYOUT MEET NECESSARY ELECTRICAL OR BUILDING CODES. CHANGES MAY ALSO BE MADE AT THE DISCRETION THE BUILDER OR ELECTRICIAN DUE TO HOUSE FRAMING ELECTRICAL INSTALLATION TECHNIQUES.

NOTE:
OVERCURRENT PROTECTION DEVICE WILL, BE INSTALLED ON THE EXTERIOR OF STRUCTURES TO SERVE AS A DISCONNECTING MEANS FOR THIS PANEL. CONDUCTORS USED FROM THE EXTERIOR DISCONNECTING MEANS TO A PANEL OR SUB PANEL SHALL HAVE FOUR-WIRE CONDUCTORS, OF WHICH ONE CONDUCTOR SHALL BE USED AS AN EQUIPMENT GROUND.

Got Land? Let's Build!
PennyworthHomes.com

PLAN: WESTWIND

CUSTOMER NAME:
MS. MARSHA JARRELL
HEATED LIVING AREA

GROUND FLOOR:	1573
SECOND FLOOR:	N/A
OTHER:	N/A
TOTAL HEATED:	1573

NON-HEATED
LIVING AREA

PORCH:	106
GARAGE:	N/A
OTHER:	N/A
TOTAL U/R	1679

IMPORTANT-PLEASE READ
BELOW CAREFULLY

OUR SALES BROCHURES AND OTHER ADVERTISING LITERATURE ARE INTENDED TO GENERALLY REFLECT AND DESCRIBE STYLES AND TYPES OF HOMES AVAILABLE THROUGHOUT A PORTION OF THE UNITED STATES. OUR SALES MODELS ARE DESIGNED AND BUILT TO GENERALLY CONFORM WITH A VARIETY OF LOCAL CUSTOMS, PRACTICES, AND BUILDING CODES PREVALENT OR IN EFFECT IN THE IMMEDIATE AREA SURROUNDING THE LOCATION OF THOSE MODELS. THIS SET OF PLANS IS AN ACTUAL PART OF OUR CONTRACT WITH YOU AND, AS SUCH, IS INTENDED TO TAKE PRIORITY OVER ANYTHING IN CONFLICT WITH IT CONTAINED IN OUR ADVERTISING LITERATURE, OUR SALES MODELS AND ANY OTHER ORAL SALES PRESENTATION. NO CHANGE, MODIFICATION, OR REVISION OF THESE PRINTED PLANS SHALL BE BINDING ON THE PARTIES UNLESS SET FORTH ON THESE PLANS OR OTHERWISE REDUCED TO WRITING AND EXECUTED BY SAID PARTIES. PLEASE REVIEW THESE PLANS ALONG WITH "EXHIBIT B" OF YOUR CONTRACT CAREFULLY AND MAKE CERTAIN BEFORE YOU SIGN THEM THAT THEY ACCURATELY REPRESENT THE HOME YOU ARE PURCHASING. ADDITIONALLY, PENNINORTH HOMES INC. HEREBY RESERVES THE RIGHT TO SUBSTITUTE MATERIALS OF EQUAL OR BETTER QUALITY AND/OR TECHNIQUES OF ASSEMBLY AND/OR CONSTRUCTION METHODS FROM THOSE WHEREIN THESE PLANS OR SPECIFIED IN EXHIBIT "B" THAT WERE NECESSARY TO ACCOMMODATE DIFFERENCES IN LOCAL CODES, GEOGRAPHIC CUSTOMS, OPTION SELECTION AND AVAILABILITY OF MATERIALS. ALL MATERIALS (LUMBER, OR OTHER BUILDING SUPPLIES) DELIVERED TO JOBSITE WHICH ARE IN EXCESS OF WHAT IS REQUIRED TO CONSTRUCT THE HOUSE AS AGREED REMAIN THE PROPERTY OF PENNINORTH HOMES INC.

NOTE:
PENNYWORTH HOMES INC. RESERVES
THE RIGHT TO ONLY MAKE CHANGES TO
PLANS, REQUESTED BY BUYERS, THAT
PENNYWORTH HOMES INC. DEEMS TO BE
AESTHETICALLY, ARCHITECTURALLY,
AND STRUCTURALLY SOUND.

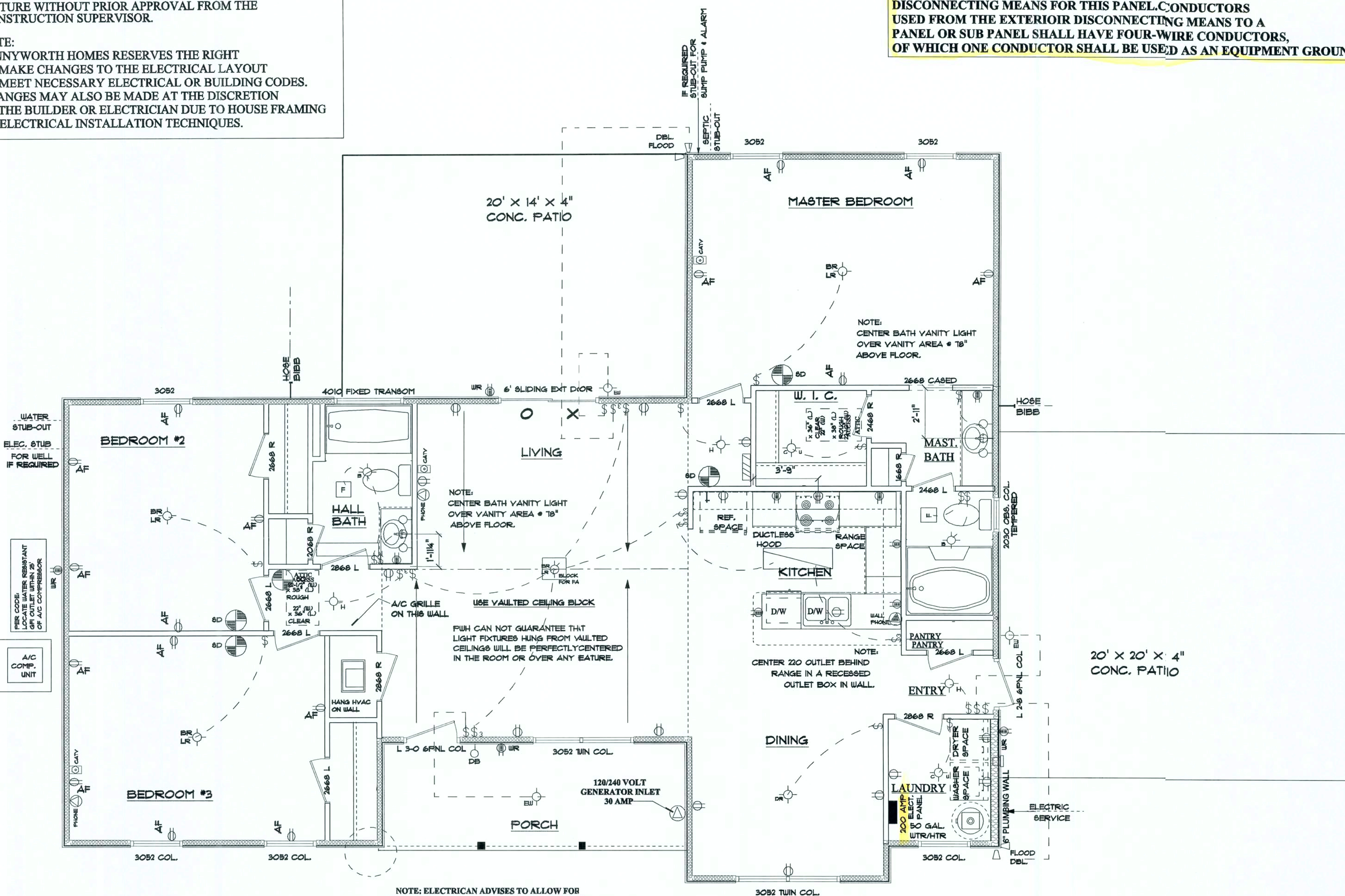
THIS PLAN REFLECTS THE DESIGN
AS PER BUYERS' FINAL APPROVED
SIGNED PLANS DATED 5/11/2006.
CHANGES MADE TO REPLICATE
ENGINEERS NOTES AND
CALCULATIONS.

CONSTRUCTION PLANS

SCALE: 1/4" = 1'-0"

DRAWN BY: BAA	PLAN DATE: July 13, 2006	PAGE 1
-------------------------	-----------------------------	------------------

JOB # 06-04-0048 OF 9



	LIVING ROOM/ BEDROOM BLOCK FOR FAN		EXTERIOR CEILING		SWITCH SINGLE POLE		GFI WR		CHIMES(7' ABOVE FLOOR)		CABLE T.V. JACK
	BATH (OVER MIRROR)		HALL FIXTURE		SWITCH THREE WAY		VISIO PLATE		CHIMES BUTTON		ELECTRICAL PANEL
	BREAKFAST NOOK		EXTERIOR WALL		ARC FAULT		LARGE ROUND FLUORESCENT KITCHEN (36"x36")		SMOKE DETECTOR		RECESSED LIGHT
	BATH (MAIN)		EXTERIOR FLOOD		OUTLET		SPLIT OUTLET		BATH FAN		HANGING LIGHT FIXTURE
	CLOSET/ UTILITY FIXTURE		FOYER FIXTURE		220V OUTLET-RECESSED BOX		RECESSED LIGHT (TUB / SHOWER)		PHONE JACK		WALL PHONE JACK
	DINING ROOM		GARAGE/KEYLESS/ATTIC		OUTLET GFI		RECESSED LIGHT (KITCHEN SINK)		UTILITY FLUORESCENT		4-BULB FLUORESCENT KITCHEN
	KITCHEN SINK FIXTURE		LIVING ROOM/ BEDROOM FIXTURE		KEYLESS FIXTURE, BLOCKED FOR FUTURE FAN		CLOSET FLUORESCENT		CEILING FAN		

REV.#	REV. DATE:	DRAWN BY:	DISCRIPTION OF REVISION
-------	------------	-----------	-------------------------

OUR SALES BROCHURES AND OTHER ADVERTISING LITERATURE ARE INTENDED TO GENERALLY REFLECT AND DEPICT THE STYLES AND QUALITY OF HOMES WE BUILD THROUGHOUT A PORTION OF THE UNITED STATES. OUR SALES MODELS ARE DESIGNED AND BUILT TO GENERALLY CONFORM WITH A VARIETY OF LOCAL CUSTOMS, PRACTICES, AND BUILDING CODES PREVALENT OR IN EFFECT IN THE IMMEDIATE AREA SURROUNDING THE LOCATION OF THOSE MODELS. THIS SET OF PLANS IS AN ACTUAL PART OF OUR CONTRACT WITH YOU AND, AS SUCH, IS INTENDED TO TAKE PRIORITY OVER ANYTHING IN CONFLICT WITH IT CONTAINED IN OUR ADVERTISING LITERATURE. OUR SALES MODELS AND EVEN OUR ORAL SALES PRESENTATION. NO CHANGE, MODIFICATION, OR REVISION OF THESE PRINTED PLANS SHALL BE BINDING ON THE PARTIES UNLESS SET FORTH ON THESE PLANS OR OTHERWISE REDUCED TO WRITING AND EXECUTED BY SAID PARTIES. PLEASE REVIEW THESE PLANS ALONG WITH "EXHIBIT B" OF YOUR CONTRACT CAREFULLY AND MAKE CERTAIN BEFORE YOU SIGN THEM THAT THEY ACCURATELY REPRESENT THE HOME YOU ARE PURCHASING. ADDITIONALLY, PENNYWORTH HOMES INC. HEREBY RESERVES THE RIGHT TO SUBSTITUTE MATERIALS OF EQUIVALENT QUALITY AND/OR TECHNIQUES OF ASSEMBLY AND/OR CONSTRUCTION METHODS FROM THAT CONTAINED IN THESE PLANS OR SPECIFIED IN EXHIBIT "B" WHERE NECESSARY TO ACCOMMODATE DIFFERENCES IN LOCAL CODES, GEOGRAPHIC CUSTOMS, OPTION SELECTION AND AVAILABILITY OF MATERIALS. ALL MATERIALS (LUMBER, OR OTHER BUILDING SUPPLIES) DELIVERED TO JOBSITE WHICH ARE IN EXCESS OF THOSE REQUIRED TO CONSTRUCT THE HOUSE AS AGREED REMAIN THE PROPERTY OF PENNYWORTH HOMES INC.

NOTE: PENNYWORTH HOMES INC. RESERVES THE RIGHT TO ONLY MAKE CHANGES TO PLANS, REQUESTED BY BUYERS, THAT PENNYWORTH HOMES INC. DEEMS TO BE AESTHETICALLY, ARCHITECTURALLY, AND STRUCTURALLY SOUND.

THIS PLAN REFLECTS THE DESIGN AS PER BUYERS' FINAL APPROVED SIGNED PLANS DATED 5/11/2006. CHANGES MADE TO REPLICATE ENGINEERS NOTES AND CALCULATIONS.

CONSTRUCTION PLANS

SCALE: 1/4" = 1' 0"

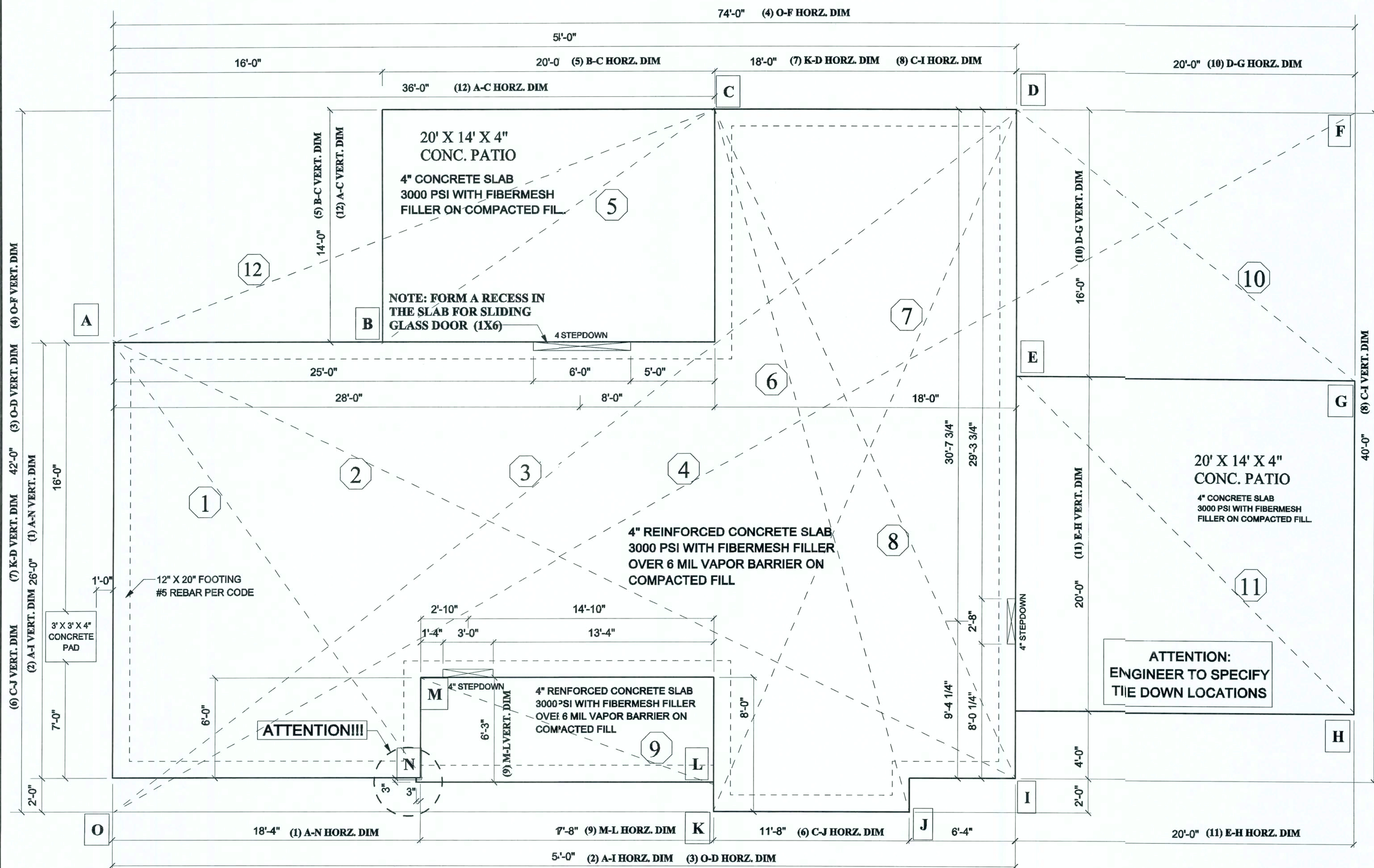
DRAWN BY: PLAN DATE: PAGE

BAA July 13, 2006 7

OF 9

JOB # 06-04-0048

- ① (A-N) 26'-0" VERT. / 18'-4" HORIZ. = DIAGONAL DISTANCE: 31'-9-3/4"
- ② (A-I) 26'-0" VERT. / 54'-0" HORIZ. = DIAGONAL DISTANCE: 59'-11-1/4"
- ③ (O-D) 42'-0" VERT. / 54'-0" HORIZ. = DIAGONAL DISTANCE: 68'-4-7/8"
- ④ (O-F) 42'-0" VERT. / 74'-0" HORIZ. = DIAGONAL DISTANCE: 85'-1"
- ⑤ (B-C) 14'-0" VERT. / 20'-0" HORIZ. = DIAGONAL DISTANCE: 24'-5"
- ⑥ (C-J) 42'-0" VERT. / 11'-8" HORIZ. = DIAGONAL DISTANCE: 43'-7-1/8"
- ⑦ (K-D) 42'-0" VERT. / 18'-0" HORIZ. = DIAGONAL DISTANCE: 42'-9"
- ⑧ (C-I) 40'-0" VERT. / 18'-0" HORIZ. = DIAGONAL DISTANCE: 43'-10-3/8"
- ⑨ (M-L) 6'-3" VERT. / 17'-8" HORIZ. = DIAGONAL DISTANCE: 18'-8-7/8"
- ⑩ (D-G) 16'-0" VERT. / 20'-0" HORIZ. = DIAGONAL DISTANCE: 25'-7-3/8"
- ⑪ (E-H) 20'-0" VERT. / 20'-0" HORIZ. = DIAGONAL DISTANCE: 28'-3-3/8"
- ⑫ (A-C) 14'-0" VERT. / 20'-0" HORIZ. = DIAGONAL DISTANCE: 24'-5"



NOTE!:
REFER TO ENGINEERING FOR SPECIFICATIONS AND CALCULATIONS.

FOUNDATION PLAN

REV.#	REV. DATE	DRAWN BY	DISCRIPTION OF REVISION