

ARCHITECT

WARREN E. BARRY

FLORIDA ARCHITECT, LICENSE #AR93495
D.B.A.: W.E.B. DESIGNS



www.WEBarryDesigns.com

4409 NW 186TH STREET
NEWBERRY, FLORIDA 32669

PHONE: (352) 472-2600
FAX: (352) 472-2611

WILSON
RESIDENCE



LAKE CITY,
FLORIDA

LIMITATIONS OF USE:

THE DRAWINGS CONTAINED WITHIN THIS SET OF DOCUMENTS ARE INTENDED FOR THE ONE TIME USE IN REFERENCE TO THE PROJECT LISTED ABOVE ONLY. ANY UNAUTHORIZED COPYING OF OR UTILIZATION OF THE DOCUMENTS OR ANY PART WITHIN IS COPYRIGHT INFRINGEMENT OF INTELLECTUAL PROPERTY.

LIABILITY DISCLAIMER:

THE DRAWINGS CONTAINED WITHIN THIS SET OF DOCUMENTS ARE INTENDED FOR CONTRACTOR'S STANDARD CONSTRUCTION. W.E.B. DESIGNS IS RESPONSIBLE ONLY FOR THE ACCURATE REPRESENTATION, COORDINATION, AND DEPICTION OF THE GENERAL DESIGN. THE CONTRACTOR IS RESPONSIBLE AND LIABLE FOR THE SELECTION OF BOTH MATERIALS AND METHODS OF CONSTRUCTION IN REGARDS TO BUT NOT LIMITED TO THERMAL AND MOISTURE PROTECTION, PROPER APPLICATION AND INSTALLATION OF PRODUCTS ACCORDING TO MANUFACTURER'S RECOMMENDATIONS, AND THE UTILIZATION AND IMPLEMENTATION OF INDUSTRY STANDARDS. THE CONTRACTOR IS ALSO RESPONSIBLE FOR FIELD VERIFICATION OF ALL DIMENSIONS OF PREEXISTING CONSTRUCTION PRIOR TO THE FABRICATION OR COMMENCEMENT OF ANY NEW WORK. ACCEPTANCE BY CONTRACTOR OF THESE DRAWINGS FOR CONSTRUCTION IS ACKNOWLEDGMENT TO AND AGREEMENT WITH THESE TERMS AND CONDITIONS.

CONSTRUCTION
DOCUMENTS FOR
CONTRACTOR'S
STANDARD
CONSTRUCTION

PROJECT NO.: 11017

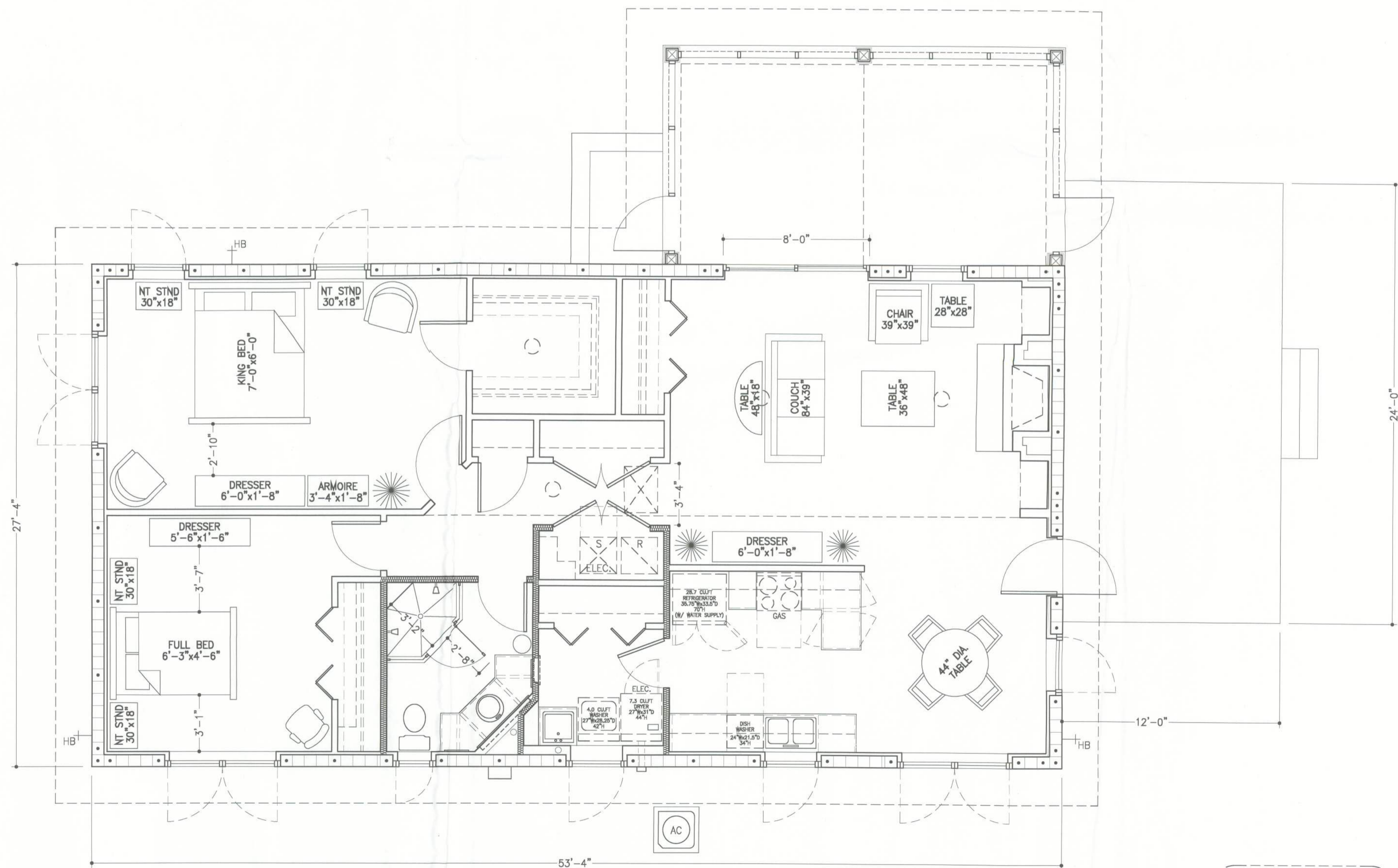
DATE: AUGUST 29, 2011

REVISION DATES:

FURNITURE PLAN

A0.10

COPYRIGHT ©



SQUARE FOOTAGE

MAIN LIVING (H&C)	1,458 sq. ft.
REAR PORCH	264 sq. ft.
TOTAL (UNDER ROOF)	1,722 sq. ft.
EXT. CONC. PAD	288 sq. ft.

FURNITURE PLAN

08/11017

PROJECT
SCALE: 1/4"=1'-0"