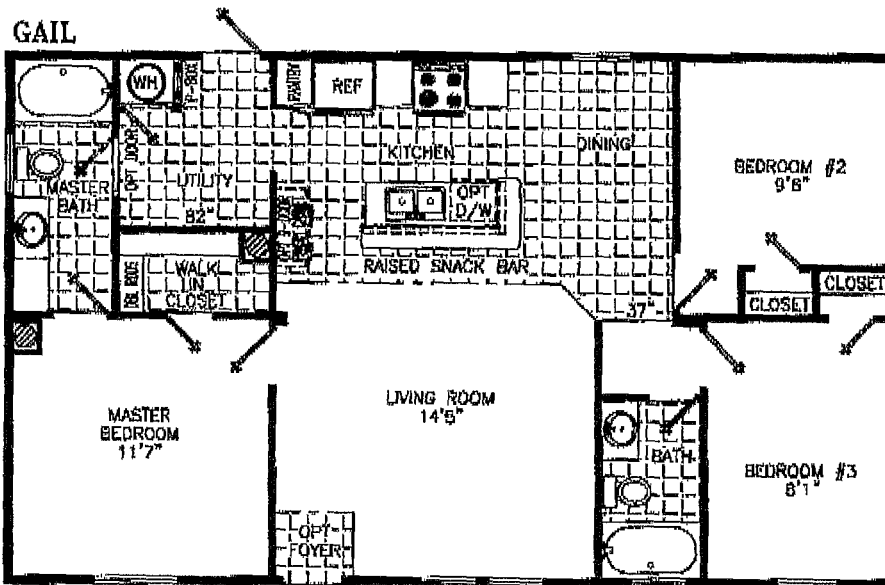


"Brasscher"

# Prestige Home Centers



40' X 24' 3 F&R, 2 BATH  
 933.3 SQ. FT. - 24' WIDE  
 996.7 SQ. FT. - 26' WIDE  
 1060.0 SQ. FT. - 28' WIDE

40C3H(15)



*Homes Designed, Built & Serviced  
 By NOBILITY HOMES*

THE OVERALL LENGTH INCLUDES A HITCH OF APPROXIMATELY FOUR FEET ON ALL HOMES.

MANUFACTURED IN ACCORDANCE WITH STANDARDS DEVELOPED AND ENFORCED BY HUD. DUE TO OUR CONTINUING PROGRAM OF PRODUCT IMPROVEMENT, PRICES AND SPECIFICATIONS ARE SUBJECT TO CHANGE WITHOUT NOTICE. SOME ITEMS SUCH AS TILES, RIMS, AXLES, AND HITCHES MAY HAVE BEEN RECYCLED AFTER INSPECTION FOR SAFETY AND APPEARANCE. ALL DIMENSIONS ARE NOMINAL.

Busschee / Boutwell  
App 1404 ~~1404~~ <sup>1404</sup>?

Dependable Well Drilling, Inc.  
2139 NW 50<sup>th</sup> St  
Bell, FL 32619  
Phone: 386-935-3042  
Fax: 877-402-8357

Date: April, 7<sup>th</sup> 2014

To who it may concern we, Dependable well drilling, Inc. will be putting a well in for James Boutwell, at 274 SW Boutwell Gln. Lake City, FL 32024. It will be a 4" well with a 1HP pump with cycle stop, and tank.

Thank You  
Dependable Well Drilling, Inc.