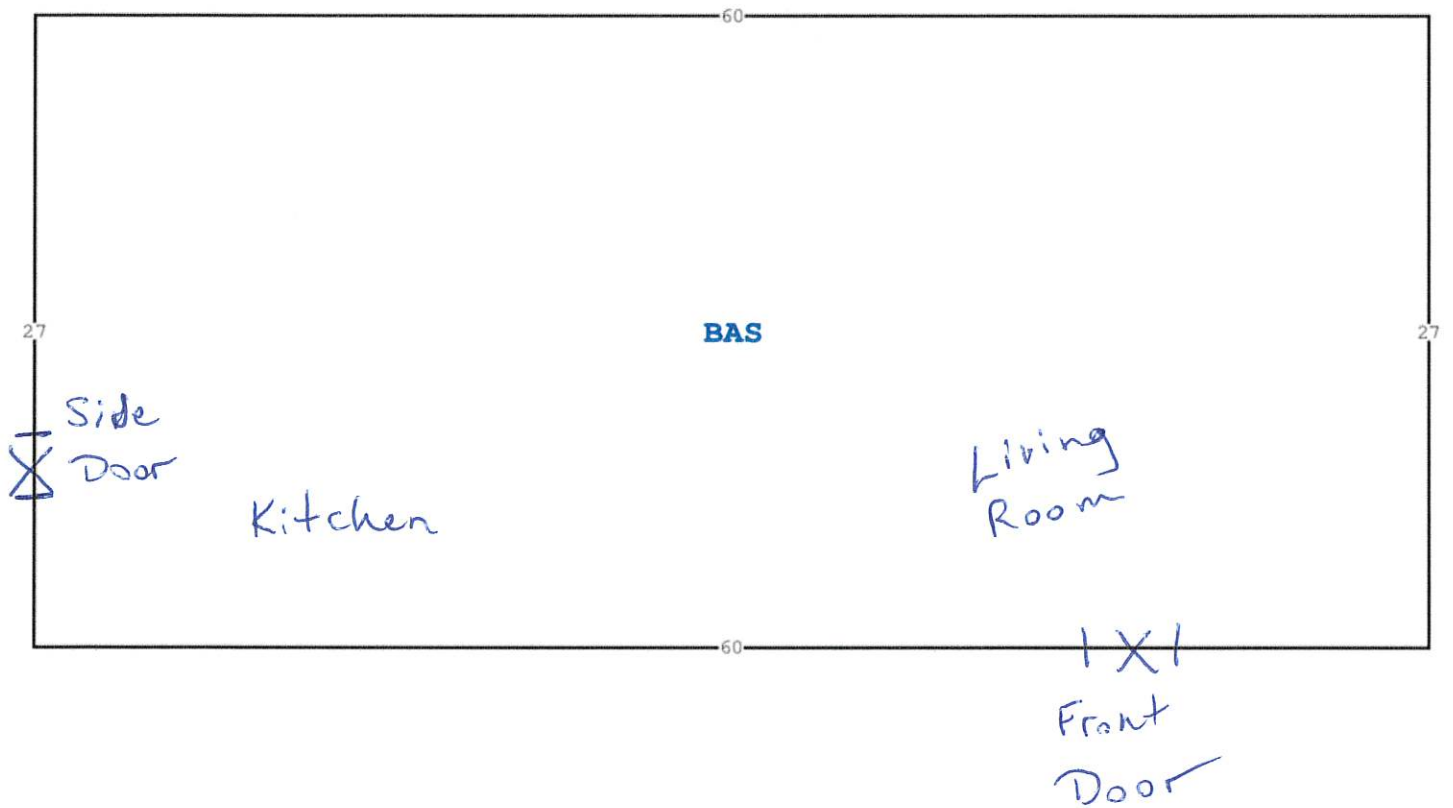


J-2/86427



FLORIDA DEPARTMENT OF  
**Business & Professional Regulation**



[DBPR HOME](#) | [ABOUT DBPR](#) | [DBPR DIVISIONS](#) | [CONTACT DBPR](#)

[BCIS Home](#) | [Log In](#) | [User Registration](#) | [Hot Topics](#) | [Submit Surcharge](#) | [Stats & Facts](#) | [Publications](#) | [Contact Us](#) | [BCIS Site Map](#) | [Links](#) | [Search](#)



**Product Approval**  
USER: Public User

► OFFICE OF THE  
SECRETARY

# 12463.1

[Product Approval Menu](#) > [Product or Application Search](#) > [Application List](#) > **Application Detail**

FL #	FL12463-R18				
Application Type	Revision				
Code Version	2023				
Application Status	Approved				
	*Approved by DBPR. Approvals by DBPR shall be reviewed and ratified by the POC and/or the Commission if necessary.				
Comments					
Archived	<input type="checkbox"/>				
Product Manufacturer	ProVia LLC. (Doors and Windows) --- Formerly Provia LLC.				
Address/Phone/Email	2150 State Route 39 Sugarcreek, OH 44681 (330) 852-1774 dean.martin@provia.com				
Authorized Signature	Cory Mast Cory.Mast@provia.com				
Technical Representative	Cory Mast				
Address/Phone/Email	2150 State Route 39 Sugarcreek, OH 44681 (330) 852-1653 cory.mast@provia.com				
Quality Assurance Representative					
Address/Phone/Email					
Category	Exterior Doors				
Subcategory	Swinging Exterior Door Assemblies				
Compliance Method	Certification Mark or Listing				
Certification Agency	National Accreditation & Management Institute				
Validated By	National Accreditation & Management Institute				
Referenced Standard and Year (of Standard)	<table> <thead> <tr> <th><u>Standard</u></th><th><u>Year</u></th></tr> </thead> <tbody> <tr> <td>ASTM E330</td><td>2014</td></tr> </tbody> </table>	<u>Standard</u>	<u>Year</u>	ASTM E330	2014
<u>Standard</u>	<u>Year</u>				
ASTM E330	2014				
Equivalence of Product Standards					
Certified By	Florida Licensed Professional Engineer or Architect <a href="#">FL12463_R18_Equiv_FL12463 ASTM EQ.pdf</a>				
Product Approval Method	Method 1 Option A				
Date Submitted	12/23/2023				

Date Validated

12/26/2023

Date Pending FBC Approval

Date Approved

01/02/2024

## Summary of Products

Go to Page



Page 1 / 2



FL #	Model, Number or Name	Description
12463.1	STEEL/FIBERGLASS INSWING GLAZED DOOR - SINGLE & DOUBLE NI	STEEL/FIBERGLASS INSWING GLAZED DOOR - SINGLE & DOUBLE NI
<b>Limits of Use</b> <b>Approved for use in HVHZ:</b> No <b>Approved for use outside HVHZ:</b> Yes <b>Impact Resistant:</b> No <b>Design Pressure:</b> N/A <b>Other:</b> REFER TO INSTALLATION INSTRUCTIONS FOR DESIGN PRESSURE RATINGS.		<b>Certification Agency Certificate</b> <a href="#">FL12463 R18 C CAC 12463.7 NI010431.03-R6.pdf</a> <a href="#">FL12463 R18 C CAC 12463.7 NI011565.12-R9.pdf</a> <b>Quality Assurance Contract Expiration Date</b> 12/31/2024 <b>Installation Instructions</b> <a href="#">FL12463 R18 II 08-02066K.pdf</a> Verified By: Luis Roberto Lomas 62514 Created by Independent Third Party: Yes <b>Evaluation Reports</b> <a href="#">FL12463 R18 AE 512780K.pdf</a> Created by Independent Third Party: Yes
12463.2	STEEL/FIBERGLASS INSWING GLAZED DOUBLE DOOR W/ SIDELITES & TRANSOM NI	STEEL/FIBERGLASS INSWING GLAZED DOUBLE DOOR W/ SIDELITES & TRANSOM NI
<b>Limits of Use</b> <b>Approved for use in HVHZ:</b> No <b>Approved for use outside HVHZ:</b> Yes <b>Impact Resistant:</b> No <b>Design Pressure:</b> N/A <b>Other:</b> REFER TO INSTALLATION INSTRUCTIONS FOR DESIGN PRESSURE RATINGS.		<b>Certification Agency Certificate</b> <a href="#">FL12463 R18 C CAC 12463.8 NI011572.28-R8.pdf</a> <a href="#">FL12463 R18 C CAC 12463.8 NI011595.22-R6.pdf</a> <b>Quality Assurance Contract Expiration Date</b> 12/31/2024 <b>Installation Instructions</b> <a href="#">FL12463 R18 II 08-02072K.pdf</a> Verified By: Luis Roberto Lomas 62514 Created by Independent Third Party: Yes <b>Evaluation Reports</b> <a href="#">FL12463 R18 AE 512786K.pdf</a> Created by Independent Third Party: Yes
12463.3	STEEL/FIBERGLASS INSWING GLAZED DOUBLE DOOR W/ SIDELITES NI	STEEL/FIBERGLASS INSWING GLAZED DOUBLE DOOR W/ SIDELITES NI
<b>Limits of Use</b> <b>Approved for use in HVHZ:</b> No <b>Approved for use outside HVHZ:</b> Yes <b>Impact Resistant:</b> No <b>Design Pressure:</b> N/A <b>Other:</b> REFER TO INSTALLATION INSTRUCTIONS FOR DESIGN PRESSURE RATINGS.		<b>Certification Agency Certificate</b> <a href="#">FL12463 R18 C CAC 12463.9 NI011572.24-R8.pdf</a> <a href="#">FL12463 R18 C CAC 12463.9 NI011595.18-R5.pdf</a> <b>Quality Assurance Contract Expiration Date</b> 12/31/2024 <b>Installation Instructions</b> <a href="#">FL12463 R18 II 08-02070K.pdf</a> Verified By: Luis Roberto Lomas 62514 Created by Independent Third Party: Yes <b>Evaluation Reports</b> <a href="#">FL12463 R18 AE 512784K.pdf</a> Created by Independent Third Party: Yes
12463.4	STEEL/FIBERGLASS INSWING GLAZED DOUBLE DOOR W/ TRANSOM NI	STEEL/FIBERGLASS INSWING GLAZED DOUBLE DOOR W/ TRANSOM NI
<b>Limits of Use</b> <b>Approved for use in HVHZ:</b> No <b>Approved for use outside HVHZ:</b> Yes <b>Impact Resistant:</b> No <b>Design Pressure:</b> N/A <b>Other:</b> REFER TO INSTALLATION INSTRUCTIONS FOR DESIGN PRESSURE RATINGS.		<b>Certification Agency Certificate</b> <a href="#">FL12463 R18 C CAC 12463.10 NI011572.26-R8.pdf</a> <a href="#">FL12463 R18 C CAC 12463.10 NI011595.20-R6.pdf</a> <b>Quality Assurance Contract Expiration Date</b> 12/31/2024 <b>Installation Instructions</b> <a href="#">FL12463 R18 II 08-02071K.pdf</a> Verified By: Luis Roberto Lomas 62514 Created by Independent Third Party: Yes <b>Evaluation Reports</b> <a href="#">FL12463 R18 AE 512785K.pdf</a> Created by Independent Third Party: Yes
12463.5	STEEL/FIBERGLASS INSWING GLAZED SINGLE DOOR W/ SIDELITES & TRANSOM NI	STEEL/FIBERGLASS INSWING GLAZED SINGLE DOOR W/ SIDELITES & TRANSOM NI

<b>Limits of Use</b> <b>Approved for use in HVHZ:</b> No <b>Approved for use outside HVHZ:</b> Yes <b>Impact Resistant:</b> No <b>Design Pressure:</b> N/A <b>Other:</b> REFER TO INSTALLATION INSTRUCTIONS FOR DESIGN PRESSURE RATINGS.		<b>Certification Agency Certificate</b> <a href="#">FL12463 R18 C CAC 12463.11 NI011572.22-R8.pdf</a> <a href="#">FL12463 R18 C CAC 12463.11 NI011595.16-R6.pdf</a> <b>Quality Assurance Contract Expiration Date</b> 12/31/2024 <b>Installation Instructions</b> <a href="#">FL12463 R18 II 08-02069J.pdf</a> Verified By: Luis Roberto Lomas 62514 Created by Independent Third Party: Yes <b>Evaluation Reports</b> <a href="#">FL12463 R18 AE 512783K.pdf</a> Created by Independent Third Party: Yes
12463.6	STEEL/FIBERGLASS INSWING GLAZED SINGLE DOOR W/ SIDELITES NI	STEEL/FIBERGLASS INSWING GLAZED SINGLE DOOR W/ SIDELITES NI
<b>Limits of Use</b> <b>Approved for use in HVHZ:</b> No <b>Approved for use outside HVHZ:</b> Yes <b>Impact Resistant:</b> No <b>Design Pressure:</b> N/A <b>Other:</b> REFER TO INSTALLATION INSTRUCTIONS FOR DESIGN PRESSURE RATINGS.		<b>Certification Agency Certificate</b> <a href="#">FL12463 R18 C CAC 12463.12 NI011572.18-R8.pdf</a> <a href="#">FL12463 R18 C CAC 12463.12 NI011595.12-R6.pdf</a> <b>Quality Assurance Contract Expiration Date</b> 12/31/2024 <b>Installation Instructions</b> <a href="#">FL12463 R18 II 08-02067J.pdf</a> Verified By: Luis Roberto Lomas 62514 Created by Independent Third Party: Yes <b>Evaluation Reports</b> <a href="#">FL12463 R18 AE 512781K.pdf</a> Created by Independent Third Party: Yes
12463.7	STEEL/FIBERGLASS INSWING GLAZED SINGLE DOOR W/ TRANSOM NI	STEEL/FIBERGLASS INSWING GLAZED SINGLE DOOR W/ TRANSOM NI
<b>Limits of Use</b> <b>Approved for use in HVHZ:</b> No <b>Approved for use outside HVHZ:</b> Yes <b>Impact Resistant:</b> No <b>Design Pressure:</b> N/A <b>Other:</b> REFER TO INSTALLATION INSTRUCTIONS FOR DESIGN PRESSURE RATINGS.		<b>Certification Agency Certificate</b> <a href="#">FL12463 R18 C CAC 12463.13 NI011572.20-R8.pdf</a> <a href="#">FL12463 R18 C CAC 12463.13 NI011595.14-R6.pdf</a> <b>Quality Assurance Contract Expiration Date</b> 12/31/2024 <b>Installation Instructions</b> <a href="#">FL12463 R18 II 08-02068J.pdf</a> Verified By: Luis Roberto Lomas 62514 Created by Independent Third Party: Yes <b>Evaluation Reports</b> <a href="#">FL12463 R18 AE 512782K.pdf</a> Created by Independent Third Party: Yes
12463.8	STEEL/FIBERGLASS INSWING OPAQUE DOOR - SINGLE & DOUBLE NI	STEEL/FIBERGLASS INSWING OPAQUE DOOR - SINGLE & DOUBLE NI
<b>Limits of Use</b> <b>Approved for use in HVHZ:</b> No <b>Approved for use outside HVHZ:</b> Yes <b>Impact Resistant:</b> No <b>Design Pressure:</b> +55/-55 <b>Other:</b>		<b>Certification Agency Certificate</b> <a href="#">FL12463 R18 C CAC 12463.14 NI011565.13-R4.pdf</a> <a href="#">FL12463 R18 C CAC 12463.14 NI011565.14-R5.pdf</a> <b>Quality Assurance Contract Expiration Date</b> 12/31/2024 <b>Installation Instructions</b> <a href="#">FL12463 R18 II 08-02080H.pdf</a> Verified By: Luis Roberto Lomas 62514 Created by Independent Third Party: Yes <b>Evaluation Reports</b> <a href="#">FL12463 R18 AE 512794J.pdf</a> Created by Independent Third Party: Yes
12463.9	STEEL/FIBERGLASS INSWING OPAQUE DOUBLE DOOR W/ SIDELITES & TRANSOM NI	STEEL/FIBERGLASS INSWING OPAQUE DOUBLE DOOR W/ SIDELITES & TRANSOM NI
<b>Limits of Use</b> <b>Approved for use in HVHZ:</b> No <b>Approved for use outside HVHZ:</b> Yes <b>Impact Resistant:</b> No <b>Design Pressure:</b> +55/-55 <b>Other:</b>		<b>Certification Agency Certificate</b> <a href="#">FL12463 R18 C CAC 12463.15 NI011572.15-R7.pdf</a> <a href="#">FL12463 R18 C CAC 12463.15 NI011595.09-R6.pdf</a> <b>Quality Assurance Contract Expiration Date</b> 12/31/2024 <b>Installation Instructions</b> <a href="#">FL12463 R18 II 08-02081J.pdf</a> Verified By: Luis Roberto Lomas 62514 Created by Independent Third Party: Yes <b>Evaluation Reports</b> <a href="#">FL12463 R18 AE 512795K.pdf</a> Created by Independent Third Party: Yes

12463.10	STEEL/FIBERGLASS INSWING OPAQUE DOUBLE DOOR W/ SIDELITES NI	STEEL/FIBERGLASS INSWING OPAQUE DOUBLE DOOR W/ SIDELITES NI
<b>Limits of Use</b> <b>Approved for use in HVHZ:</b> No <b>Approved for use outside HVHZ:</b> Yes <b>Impact Resistant:</b> No <b>Design Pressure:</b> +55/-55 <b>Other:</b>		<b>Certification Agency Certificate</b> <a href="#">FL12463 R18 C CAC 12463.16 NI011572.12-R7.pdf</a> <a href="#">FL12463 R18 C CAC 12463.16 NI011595.07-R6.pdf</a> <b>Quality Assurance Contract Expiration Date</b> 12/31/2024 <b>Installation Instructions</b> <a href="#">FL12463 R18 II 08-02085J.pdf</a> Verified By: Luis Roberto Lomas 62514 Created by Independent Third Party: Yes <b>Evaluation Reports</b> <a href="#">FL12463 R18 AE 512799K.pdf</a> Created by Independent Third Party: Yes
12463.11	STEEL/FIBERGLASS INSWING OPAQUE DOUBLE DOOR W/ TRANSOM NI	STEEL/FIBERGLASS INSWING OPAQUE DOUBLE DOOR W/ TRANSOM NI
<b>Limits of Use</b> <b>Approved for use in HVHZ:</b> No <b>Approved for use outside HVHZ:</b> Yes <b>Impact Resistant:</b> No <b>Design Pressure:</b> +55/-55 <b>Other:</b>		<b>Certification Agency Certificate</b> <a href="#">FL12463 R18 C CAC 12463.17 NI011572.16-R5.pdf</a> <a href="#">FL12463 R18 C CAC 12463.17 NI011595.11-R4.pdf</a> <b>Quality Assurance Contract Expiration Date</b> 12/31/2024 <b>Installation Instructions</b> <a href="#">FL12463 R18 II 08-02086H.pdf</a> Verified By: Luis Roberto Lomas 62514 Created by Independent Third Party: Yes <b>Evaluation Reports</b> <a href="#">FL12463 R18 AE 512800J.pdf</a> Created by Independent Third Party: Yes
12463.12	STEEL/FIBERGLASS INSWING OPAQUE SINGLE DOOR W/ SIDELITES & TRANSOM NI	STEEL/FIBERGLASS INSWING OPAQUE SINGLE DOOR W/ SIDELITES & TRANSOM NI
<b>Limits of Use</b> <b>Approved for use in HVHZ:</b> No <b>Approved for use outside HVHZ:</b> Yes <b>Impact Resistant:</b> No <b>Design Pressure:</b> +55/-55 <b>Other:</b>		<b>Certification Agency Certificate</b> <a href="#">FL12463 R18 C CAC 12463.18 NI011572.10-R7.pdf</a> <a href="#">FL12463 R18 C CAC 12463.18 NI011595.04-R5.pdf</a> <b>Quality Assurance Contract Expiration Date</b> 12/31/2024 <b>Installation Instructions</b> <a href="#">FL12463 R18 II 08-02084J.pdf</a> Verified By: Luis Roberto Lomas 62514 Created by Independent Third Party: Yes <b>Evaluation Reports</b> <a href="#">FL12463 R18 AE 512798K.pdf</a> Created by Independent Third Party: Yes
12463.13	STEEL/FIBERGLASS INSWING OPAQUE SINGLE DOOR W/ SIDELITES NI	STEEL/FIBERGLASS INSWING OPAQUE SINGLE DOOR W/ SIDELITES NI
<b>Limits of Use</b> <b>Approved for use in HVHZ:</b> No <b>Approved for use outside HVHZ:</b> Yes <b>Impact Resistant:</b> No <b>Design Pressure:</b> +55/-55 <b>Other:</b>		<b>Certification Agency Certificate</b> <a href="#">FL12463 R18 C CAC 12463.19 NI011572.07-R7.pdf</a> <a href="#">FL12463 R18 C CAC 12463.19 NI011595-R6.pdf</a> <b>Quality Assurance Contract Expiration Date</b> 12/31/2024 <b>Installation Instructions</b> <a href="#">FL12463 R18 II 08-02082J.pdf</a> Verified By: Luis Roberto Lomas 62514 Created by Independent Third Party: Yes <b>Evaluation Reports</b> <a href="#">FL12463 R18 AE 512796K.pdf</a> Created by Independent Third Party: Yes
12463.14	STEEL/FIBERGLASS INSWING OPAQUE SINGLE DOOR W/ TRANSOM NI	STEEL/FIBERGLASS INSWING OPAQUE SINGLE DOOR W/ TRANSOM NI
<b>Limits of Use</b> <b>Approved for use in HVHZ:</b> No <b>Approved for use outside HVHZ:</b> Yes <b>Impact Resistant:</b> No <b>Design Pressure:</b> +55/-55 <b>Other:</b>		<b>Certification Agency Certificate</b> <a href="#">FL12463 R18 C CAC 12463.20 NI011572.08-R5.pdf</a> <a href="#">FL12463 R18 C CAC 12463.20 NI011595.02-R4.pdf</a> <b>Quality Assurance Contract Expiration Date</b> 12/31/2024 <b>Installation Instructions</b> <a href="#">FL12463 R18 II 08-02083H.pdf</a> Verified By: Luis Roberto Lomas 62514 Created by Independent Third Party: Yes <b>Evaluation Reports</b>

		<a href="#">FL12463 R18 AE 512797K.pdf</a> Created by Independent Third Party: Yes
12463.15	STEEL/FIBERGLASS OUTSWING GLAZED DOOR - SINGLE & DOUBLE NI	STEEL/FIBERGLASS OUTSWING GLAZED DOOR - SINGLE & DOUBLE NI
<b>Limits of Use</b> <b>Approved for use in HVHZ:</b> No <b>Approved for use outside HVHZ:</b> Yes <b>Impact Resistant:</b> No <b>Design Pressure:</b> N/A <b>Other:</b> REFER TO INSTALLATION INSTRUCTIONS FOR DESIGN PRESSURE RATINGS.		<b>Certification Agency Certificate</b> <a href="#">FL12463 R18 C CAC 12463.21 NI010431.03-R6.pdf</a> <a href="#">FL12463 R18 C CAC 12463.21 NI011593.04-R8.pdf</a> <b>Quality Assurance Contract Expiration Date</b> 12/31/2024 <b>Installation Instructions</b> <a href="#">FL12463 R18 II 08-02073K.pdf</a> Verified By: Luis Roberto Lomas 62514 Created by Independent Third Party: Yes <b>Evaluation Reports</b> <a href="#">FL12463 R18 AE 512787K.pdf</a> Created by Independent Third Party: Yes
12463.16	STEEL/FIBERGLASS OUTSWING GLAZED DOUBLE DOOR W/ SIDELITES & TRANSOM NI	STEEL/FIBERGLASS OUTSWING GLAZED DOUBLE DOOR W/ SIDELITES & TRANSOM NI
<b>Limits of Use</b> <b>Approved for use in HVHZ:</b> No <b>Approved for use outside HVHZ:</b> Yes <b>Impact Resistant:</b> No <b>Design Pressure:</b> N/A <b>Other:</b> REFER TO INSTALLATION INSTRUCTIONS FOR DESIGN PRESSURE RATINGS.		<b>Certification Agency Certificate</b> <a href="#">FL12463 R18 C CAC 12463.22 NI011572.29-R8.pdf</a> <a href="#">FL12463 R18 C CAC 12463.22 NI011595.23-R7.pdf</a> <b>Quality Assurance Contract Expiration Date</b> 12/31/2024 <b>Installation Instructions</b> <a href="#">FL12463 R18 II 08-02079K.pdf</a> Verified By: Luis Roberto Lomas 62514 Created by Independent Third Party: Yes <b>Evaluation Reports</b> <a href="#">FL12463 R18 AE 512793K.pdf</a> Created by Independent Third Party: Yes
12463.17	STEEL/FIBERGLASS OUTSWING GLAZED DOUBLE DOOR W/ SIDELITES NI	STEEL/FIBERGLASS OUTSWING GLAZED DOUBLE DOOR W/ SIDELITES NI
<b>Limits of Use</b> <b>Approved for use in HVHZ:</b> No <b>Approved for use outside HVHZ:</b> Yes <b>Impact Resistant:</b> No <b>Design Pressure:</b> N/A <b>Other:</b> REFER TO INSTALLATION INSTRUCTIONS FOR DESIGN PRESSURE RATINGS.		<b>Certification Agency Certificate</b> <a href="#">FL12463 R18 C CAC 12463.23 NI011572.25-R9.pdf</a> <a href="#">FL12463 R18 C CAC 12463.23 NI011595.19-R7.pdf</a> <b>Quality Assurance Contract Expiration Date</b> 12/31/2024 <b>Installation Instructions</b> <a href="#">FL12463 R18 II 08-02077K.pdf</a> Verified By: Luis Roberto Lomas 62514 Created by Independent Third Party: Yes <b>Evaluation Reports</b> <a href="#">FL12463 R18 AE 512791K.pdf</a> Created by Independent Third Party: Yes
12463.18	STEEL/FIBERGLASS OUTSWING GLAZED DOUBLE DOOR W/ TRANSOM NI	STEEL/FIBERGLASS OUTSWING GLAZED DOUBLE DOOR W/ TRANSOM NI
<b>Limits of Use</b> <b>Approved for use in HVHZ:</b> No <b>Approved for use outside HVHZ:</b> Yes <b>Impact Resistant:</b> No <b>Design Pressure:</b> N/A <b>Other:</b> REFER TO INSTALLATION INSTRUCTIONS FOR DESIGN PRESSURE RATINGS.		<b>Certification Agency Certificate</b> <a href="#">FL12463 R18 C CAC 12463.24 NI011572.27-R8.pdf</a> <a href="#">FL12463 R18 C CAC 12463.24 NI011595.21-R7.pdf</a> <b>Quality Assurance Contract Expiration Date</b> 12/31/2024 <b>Installation Instructions</b> <a href="#">FL12463 R18 II 08-02078K.pdf</a> Verified By: Luis Roberto Lomas 62514 Created by Independent Third Party: Yes <b>Evaluation Reports</b> <a href="#">FL12463 R18 AE 512792K.pdf</a> Created by Independent Third Party: Yes
12463.19	STEEL/FIBERGLASS OUTSWING GLAZED SINGLE DOOR W/ SIDELITES & TRANSOM NI	STEEL/FIBERGLASS OUTSWING GLAZED SINGLE DOOR W/ SIDELITES & TRANSOM NI
<b>Limits of Use</b> <b>Approved for use in HVHZ:</b> No <b>Approved for use outside HVHZ:</b> Yes <b>Impact Resistant:</b> No <b>Design Pressure:</b> N/A <b>Other:</b> REFER TO INSTALLATION INSTRUCTIONS FOR DESIGN PRESSURE RATINGS.		<b>Certification Agency Certificate</b> <a href="#">FL12463 R18 C CAC 12463.25 NI011572.23-R7.pdf</a> <a href="#">FL12463 R18 C CAC 12463.25 NI011595.17-R7.pdf</a> <b>Quality Assurance Contract Expiration Date</b> 12/31/2024 <b>Installation Instructions</b> <a href="#">FL12463 R18 II 08-02076K.pdf</a> Verified By: Luis Roberto Lomas 62514

		Created by Independent Third Party: Yes <b>Evaluation Reports</b> <a href="#">FL12463_R18_AE_512790K.pdf</a> Created by Independent Third Party: Yes
12463.20	STEEL/FIBERGLASS OUTSWING GLAZED SINGLE DOOR W/ SIDELITES NI	STEEL/FIBERGLASS OUTSWING GLAZED SINGLE DOOR W/ SIDELITES NI
<b>Limits of Use</b> <b>Approved for use in HVHZ:</b> No <b>Approved for use outside HVHZ:</b> Yes <b>Impact Resistant:</b> No <b>Design Pressure:</b> N/A <b>Other:</b> REFER TO INSTALLATION INSTRUCTIONS FOR DESIGN PRESSURE RATINGS.		<b>Certification Agency Certificate</b> <a href="#">FL12463_R18_C_CAC_12463.26_NI011572.19-R9.pdf</a> <a href="#">FL12463_R18_C_CAC_12463.26_NI011595.13-R7.pdf</a> <b>Quality Assurance Contract Expiration Date</b> 12/31/2024 <b>Installation Instructions</b> <a href="#">FL12463_R18_II_08-02074K.pdf</a> Verified By: Luis Roberto Lomas 62514 Created by Independent Third Party: Yes <b>Evaluation Reports</b> <a href="#">FL12463_R18_AE_512788K.pdf</a> Created by Independent Third Party: Yes

Go to Page



Page 1 / 2

[Back](#)[Next](#)[Contact Us :: 2601 Blair Stone Road, Tallahassee FL 32399 Phone: 850-487-1824](#)The State of Florida is an AA/EEO employer. [Copyright 2007-2013 State of Florida.](#) :: [Privacy Statement](#) :: [Accessibility Statement](#) :: [Refund Statement](#)

Under Florida law, email addresses are public records. If you do not want your e-mail address released in response to a public-records request, do not send electronic mail to this entity. Instead, contact the office by phone or by traditional mail. If you have any questions, please contact 850.487.1395. \*Pursuant to Section 455.275(1), Florida Statutes, effective October 1, 2012, licensees licensed under Chapter 455, F.S. must provide the Department with an email address if they have one. The emails provided may be used for official communication with the licensee. However email addresses are public record. If you do not wish to supply a personal address, please provide the Department with an email address which can be made available to the public. To determine if you are a licensee under Chapter 455, F.S., please click [here](#).

**Product Approval Accepts:**

REVISIONS			
REV	DESCRIPTION	DATE	APPROVED
K	REVISE TRIMS AND HARDWARE SCHEDULE	11/02/2023	R.L.

NOTES:

1. THE PRODUCT SHOWN HEREIN IS DESIGNED AND MANUFACTURED TO COMPLY WITH REQUIREMENTS OF THE FLORIDA BUILDING CODE.
2. WOOD FRAMING, METAL STRUCTURE AND MASONRY OPENING TO BE DESIGNED AND ANCHORED TO PROPERLY TRANSFER ALL LOADS TO STRUCTURE. FRAMING AND MASONRY OPENING IS THE RESPONSIBILITY OF THE ARCHITECT OR ENGINEER OF RECORD.
3. WHERE 1X BUCK IS NOT USED DISSIMILAR MATERIALS MUST BE SEPARATED WITH APPROVED COATING OR MEMBRANE. SELECTION OF COATING OR MEMBRANE IS THE RESPONSIBILITY OF THE ARCHITECT OR ENGINEER OF RECORD.
4. BUCKS SHALL EXTEND BEYOND UNIT FRAME INTERIOR FACE SO THAT FULL FRAME SUPPORT IS PROVIDED.
5. ALLOWABLE STRESS INCREASE OF 1/3 WAS NOT USED IN THE DESIGN OF THE PRODUCT SHOWN HEREIN. WIND LOAD DURATION FACTOR  $C_d=1.6$  WAS USED FOR WOOD ANCHOR CALCULATIONS.
6. FRAME MATERIAL: WOOD WITH  $G=.46$  MINIMUM SPECIFIC GRAVITY, OR COMPOSITE, OR FRAMESAVER, OR FUSION FRAME.  
DOOR SKIN MATERIAL: STEEL .033" THICK (MINIMUM), FIBERGLASS .085" THICK (MINIMUM)
7. UNITS MUST BE GLAZED PER ASTM E1300, WITH SAFETY GLAZING.
8. APPROVED IMPACT PROTECTIVE SYSTEM IS REQUIRED FOR THIS PRODUCT IN WIND BORNE DEBRIS REGIONS.
9. SHIM AS REQUIRED AT EACH INSTALLATION ANCHOR WITH LOAD BEARING SHIM. SHIM WHERE SPACE OF 1/16" OR GREATER OCCURS. MAXIMUM ALLOWABLE SHIM STACK TO BE 1/4".

10. FOR ANCHORING INTO WOOD FRAMING OR 2X BUCK USE #8 WOOD SCREWS WITH SUFFICIENT LENGTH TO ACHIEVE A 1 1/4" MINIMUM EMBEDMENT INTO SUBSTRATE. LOCATE ANCHORS AS SHOWN IN ELEVATIONS AND INSTALLATION DETAILS.
11. FOR ANCHORING INTO MASONRY/CONCRETE USE 3/16" TAPCONS WITH SUFFICIENT LENGTH TO ACHIEVE A 1 3/4" MINIMUM EMBEDMENT INTO SUBSTRATE WITH 2" MINIMUM EDGE DISTANCE. LOCATE ANCHORS AS SHOWN IN ELEVATIONS AND INSTALLATION DETAILS.
12. FOR ANCHORING INTO METAL STRUCTURE USE #8 SMS OR SELF DRILLING SCREWS WITH SUFFICIENT LENGTH TO ACHIEVE 3 THREADS MINIMUM BEYOND STRUCTURE INTERIOR WALL. LOCATE ANCHORS AS SHOWN IN ELEVATIONS AND INSTALLATION DETAILS.
13. ALL FASTENERS TO BE CORROSION RESISTANT.
14. INSTALLATION ANCHORS SHALL BE INSTALLED IN ACCORDANCE WITH ANCHOR MANUFACTURER'S INSTALLATION INSTRUCTIONS AND ANCHORS SHALL NOT BE USED IN SUBSTRATES WITH STRENGTHS LESS THAN THE MINIMUM STRENGTH SPECIFIED BELOW:
  - 14.1. WOOD – MINIMUM SPECIFIC GRAVITY OF  $G=0.42$
  - 14.2. CONCRETE – MINIMUM COMPRESSIVE STRENGTH OF 3,192 PSI.
  - 14.3. MASONRY – GROUT FILLED STRENGTH CONFORMANCE TO ASTM C-90, GRADE N, TYPE 1 (OR GREATER).
  - 14.4. METAL STRUCTURE: STEEL 18GA, 33KSI OR ALUMINUM 6063-T5 .048" THICK MINIMUM

SIGNED: 11/27/2023

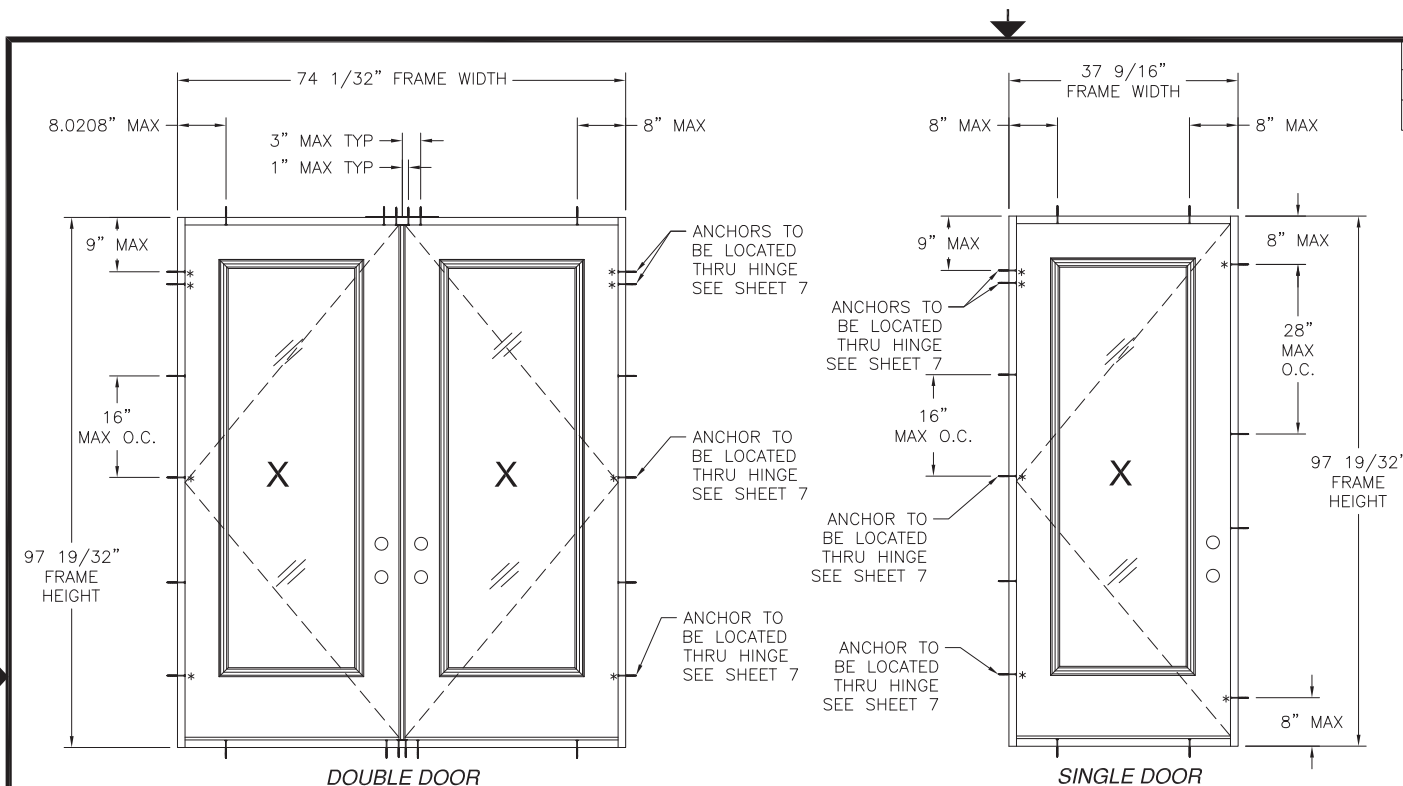
TABLE OF CONTENTS	
SHEET NO.	DESCRIPTION
1	NOTES
2	ELEVATIONS
3 – 6	INSTALLATION DETAILS
7 – 11	COMPONENTS AND DETAILS

PROVIA, LLC. 2150 STATE ROUTE 39 WEST SUGARCREEK, OH 44681			
STEEL/FIBERGLASS INSWING GLAZED DOOR SINGLE & DOUBLE NON-IMPACT NOTES			
DRAWN: N.G.		DWG NO. 08-02066	
SCALE NTS		DATE 06/18/13	REV K
		SHEET 1	OF 11
L. ROBERTO LOMAS P.E. 208 7th Ave, INDIANALANTIC, FL 32903 434-688-0609 rllomas@rlomaspe.com			

LUIS R. LOMAS  
 LICENSE  
 No. 62514  
 STATE OF  
 FLORIDA  
 PROFESSIONAL ENGINEER

Luis R. Lomas P.E.  
FL No.: 62514





35 3/4" x 95" PANEL SIZE SHOWN. OTHER SIZES ARE APPROVED AS LONG AS INDIVIDUAL PANEL AREA DOES NOT EXCEED 23.58 FT<sup>2</sup>

REVISIONS			
REV	DESCRIPTION	DATE	APPROVED
K	REVISE TRIMS AND HARDWARE SCHEDULE	11/02/2023	R.L.

DESIGN PRESSURE RATING	IMPACT RATING
<b>±55.0PSF</b>	<b>NONE</b>
THIS SYSTEM WAS NOT TESTED FOR WATER INFILTRATION AND IS TO BE INSTALLED ONLY WHERE WATER RESISTANCE IS NOT REQUIRED	

WITH STEEL SLAB

DESIGN PRESSURE RATING	IMPACT RATING
<b>+48.0/-52.0</b>	<b>NONE</b>
THIS SYSTEM WAS NOT TESTED FOR WATER INFILTRATION AND IS TO BE INSTALLED ONLY WHERE WATER RESISTANCE IS NOT REQUIRED	

WITH FIBERGLASS SLAB

DESIGN PRESSURE RATING	IMPACT RATING
<b>±50.0PSF</b>	<b>NONE</b>
THIS SYSTEM WAS NOT TESTED FOR WATER INFILTRATION AND IS TO BE INSTALLED ONLY WHERE WATER RESISTANCE IS NOT REQUIRED	

WITH STEEL SLAB AND PANOLOCK MULTI-POINT

DESIGN PRESSURE RATING	IMPACT RATING
<b>+48.0/-50.0</b>	<b>NONE</b>
THIS SYSTEM WAS NOT TESTED FOR WATER INFILTRATION AND IS TO BE INSTALLED ONLY WHERE WATER RESISTANCE IS NOT REQUIRED	

WITH FIBERGLASS SLAB AND PANOLOCK MULTI-POINT

#### HARDWARE SCHEDULE

A. F-SERIES ASSEMBLY DOOR KNOB BY SCHLAGE.
B. B-SERIES DEADBOLT ASSEMBLY BY SCHLAGE
C. F-SERIES DEADBOLT ASSEMBLY BY SCHLAGE
D. EMTEK RESIDENTIAL GRADE DOOR HANDLE ASSEMBLY (ALTERNATE)
E. TRILLENMIUM MULTI-POINT LOCK HANDLE ASSEMBLY (ALTERNATE)
F. PANOLOCK MULTI-POINT LOCK HANDLE ASSEMBLY (ALTERNATE)
G. INSWING HURRICANE ASTRAGAL BY ENDURA
H. (3) 4" X 4" BALL BEARING HINGES BY PENROD
I. (3) 4" X 4" SPRING BOMMER HINGES BY PENROD (ALTERNATE)

#### NOTES:

- HINGES ARE LOCATED AT 10", 50" AND 89" FROM TOP CORNER.
- APPROVED CONFIGURATIONS MAY BE RIGHT OR LEFT HAND.
- MAXIMUM PANEL SIZE 35 3/4" X 95".
- MAXIMUM D.L.O. 20 3/8" X 78 1/2".
- JAMBS ARE ASSEMBLED TO HEAD FRAME WITH (3) #8X3" WOOD SCREWS AT EACH JAMB.
- JAMBS ARE ASSEMBLED TO THRESHOLD WITH (3) #6X1-1/2" WOOD SCREWS AT EACH JAMB.

PROVIA, LLC.

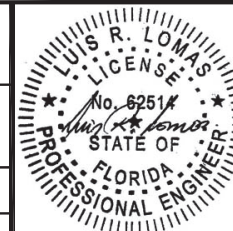
2150 STATE ROUTE 39 WEST  
SUGARCREEK, OH 44681

STEEL/FIBERGLASS INSWING GLAZED DOOR  
SINGLE & DOUBLE NON-IMPACT  
ELEVATIONS

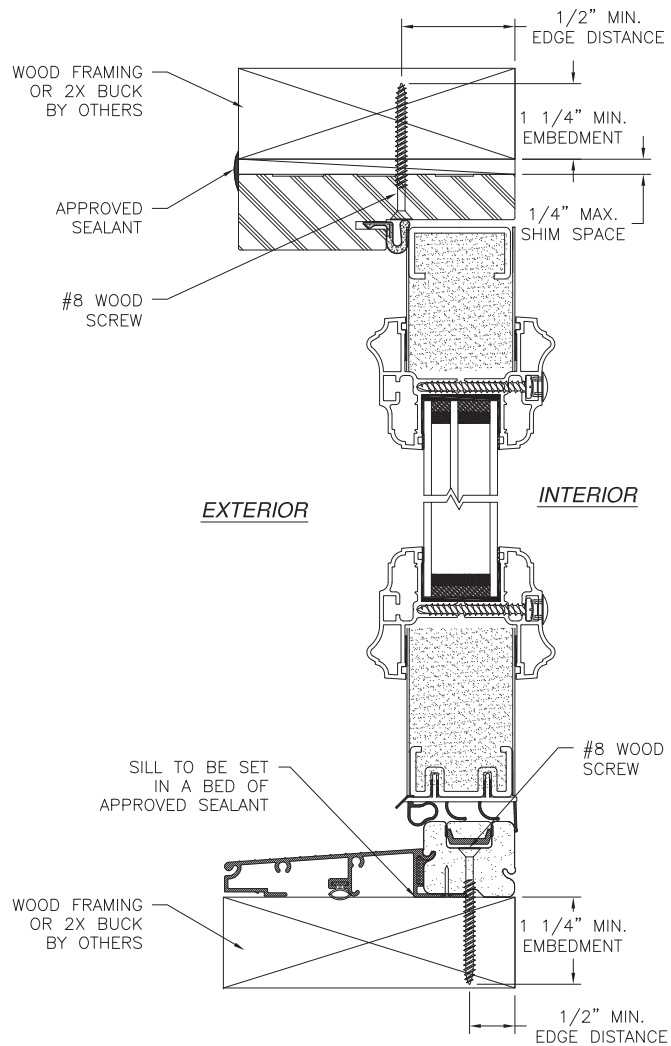
DRAWN: N.G.	DWG NO. 08-02066	REV K
SCALE NTS	DATE 06/18/13	SHEET 2 OF 11

L. ROBERTO LOMAS P.E.  
208 7th Ave, INDIANALANTIC, FL 32903  
434-688-0609 rlomas@lrlomaspe.com

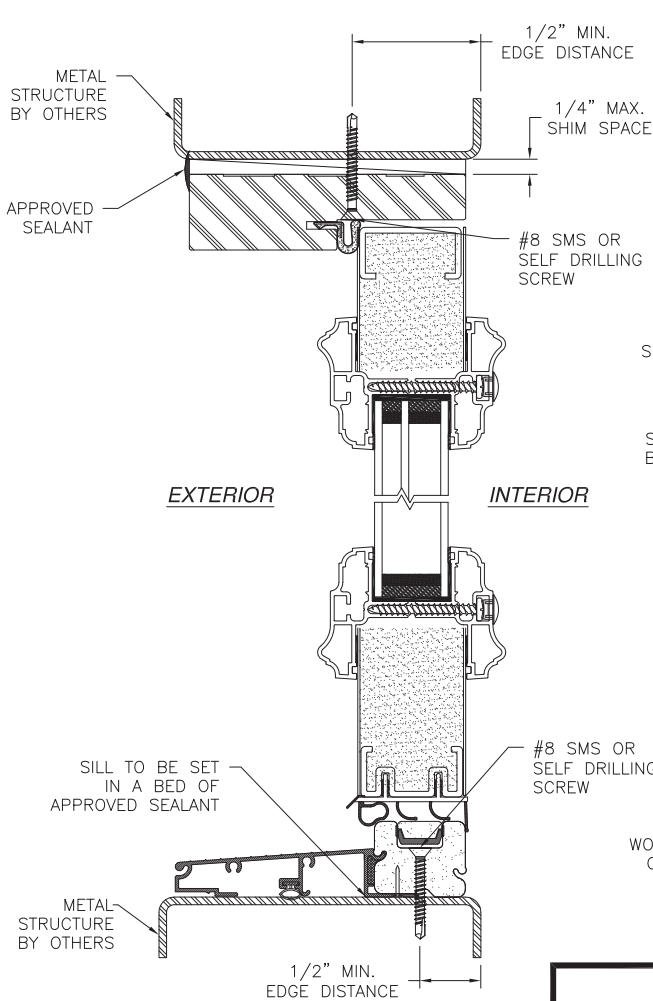
SIGNED: 11/27/2023



Luis R. Lomas P.E.  
FL No.: 62514



**VERTICAL CROSS SECTION**  
WOOD FRAMING OR 2X BUCK INSTALLATION

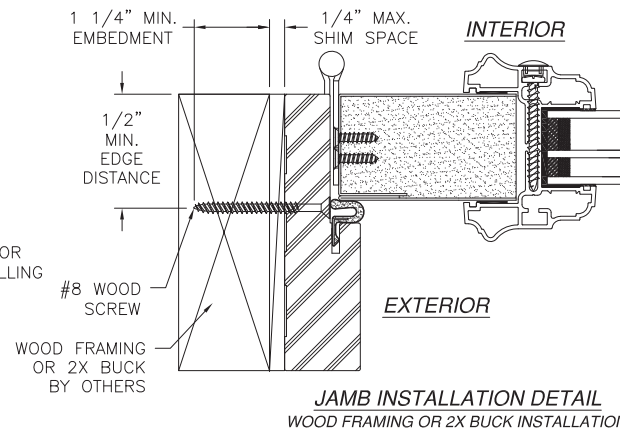
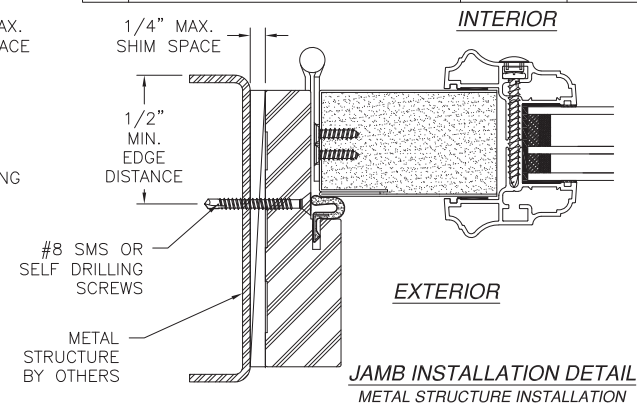


**VERTICAL CROSS SECTION**  
METAL STRUCTURE INSTALLATION

**NOTES:**

1. INTERIOR AND EXTERIOR FINISHES, BY OTHERS, NOT SHOWN FOR CLARITY.
2. PERIMETER AND JOINT SEALANT BY OTHERS TO BE DESIGNED IN ACCORDANCE WITH ASTM E2112

REVISIONS			
REV	DESCRIPTION	DATE	APPROVED
K	REVISE TRIMS AND HARDWARE SCHEDULE	11/02/2023	R.L.

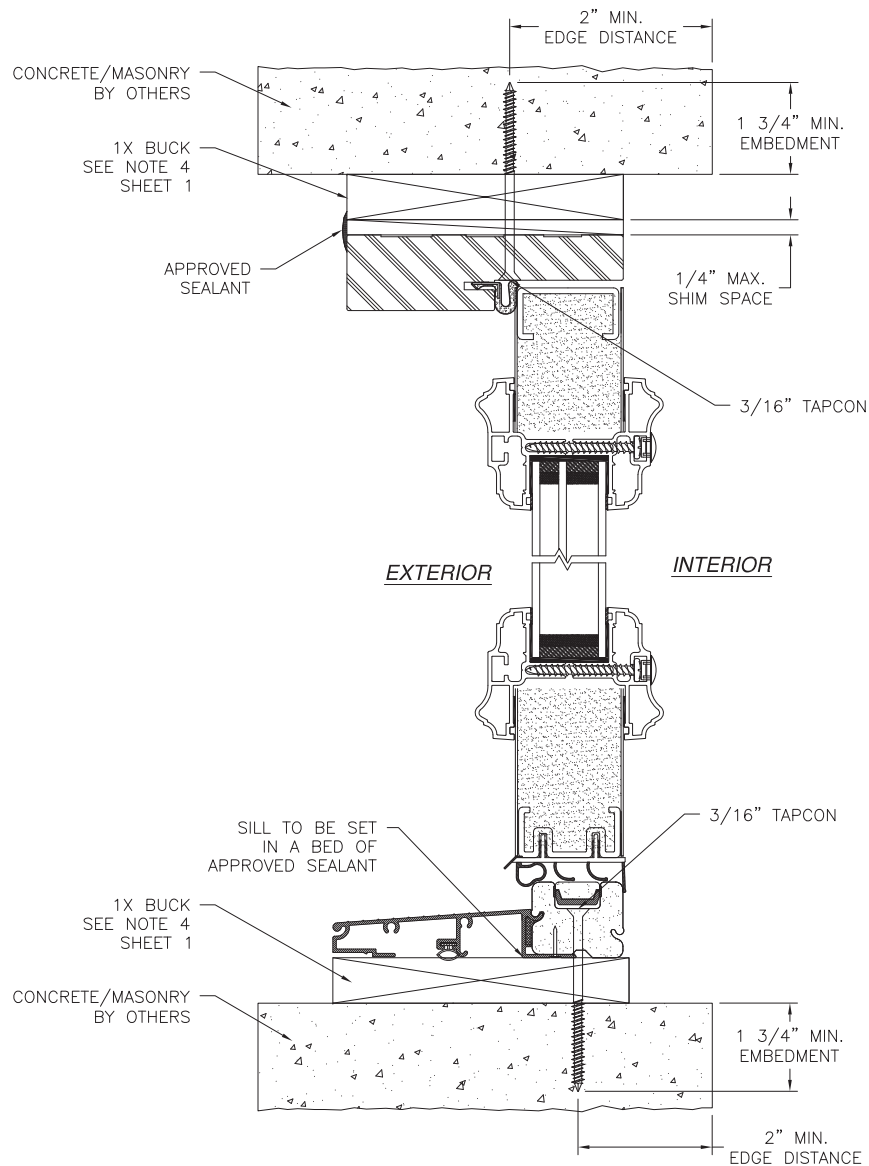


SIGNED: 11/27/2023

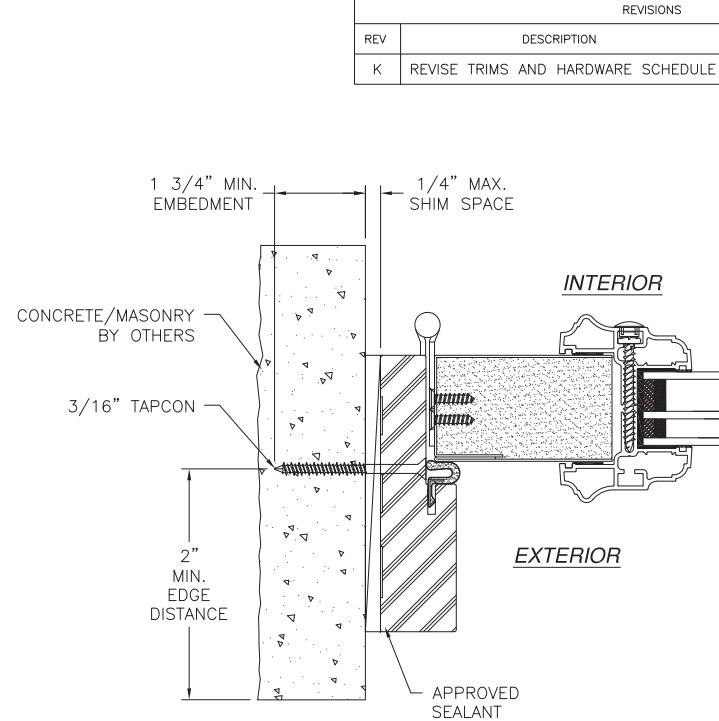
<b>PROVIA, LLC.</b> 2150 STATE ROUTE 39 WEST SUGARCREEK, OH 44681			
STEEL/FIBERGLASS INSWING GLAZED DOOR SINGLE & DOUBLE NON-IMPACT INSTALLATION DETAILS			
DRAWN: N.G.		DWG NO. 08-02066	
SCALE NTS		DATE 06/18/13	SHEET 3 OF 11
L. ROBERTO LOMAS P.E. 208 7th Ave, INDIANALANTIC, FL 32903 434-688-0609 rlomas@lrlomaspe.com			

LUIS R. LOMAS  
LICENSE  
No. 62514  
STATE OF  
FLORIDA  
PROFESSIONAL ENGINEER

Luis R. Lomas P.E.  
FL No.: 62514



**VERTICAL CROSS SECTION**  
CONCRETE/MASONRY WITH 1X BUCK INSTALLATION  
FOR CONCRETE/MASONRY WITHOUT 1X BUCK REFER TO  
JAMB INSTALLATION DETAIL



**JAMB INSTALLATION DETAIL**  
CONCRETE/MASONRY WITHOUT 1X BUCK INSTALLATION  
FOR CONCRETE/MASONRY INSTALLATION WITH 1X BUCK REFER TO  
HEAD AND SILL INSTALLATION DETAILS

**NOTES:**

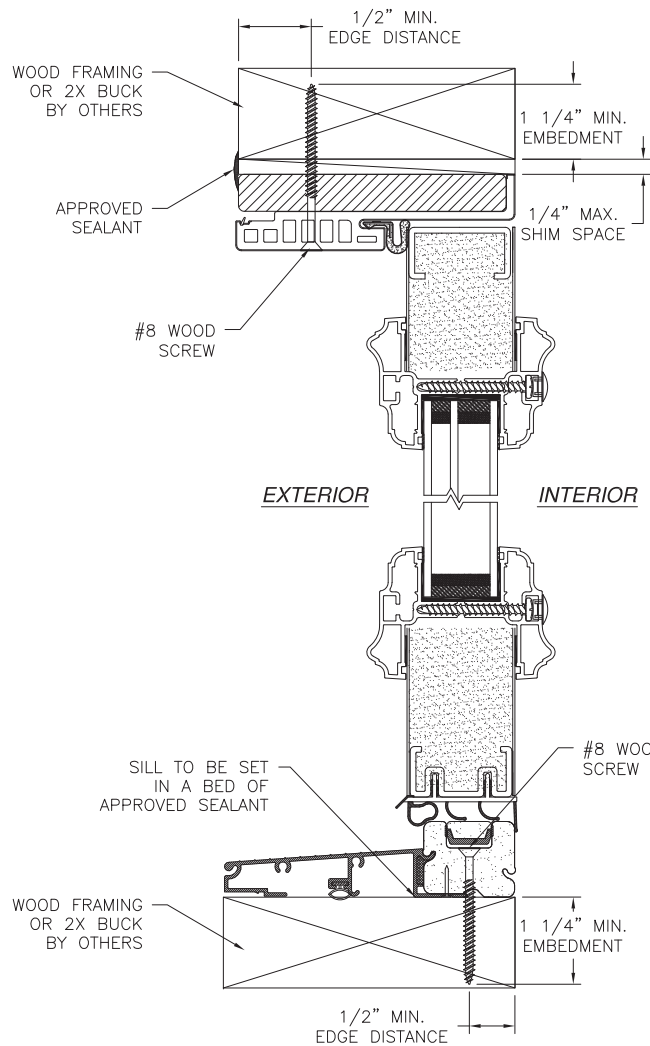
1. INTERIOR AND EXTERIOR FINISHES, BY OTHERS, NOT SHOWN FOR CLARITY.
2. PERIMETER AND JOINT SEALANT BY OTHERS TO BE DESIGNED IN ACCORDANCE WITH ASTM E2112

SIGNED: 11/27/2023

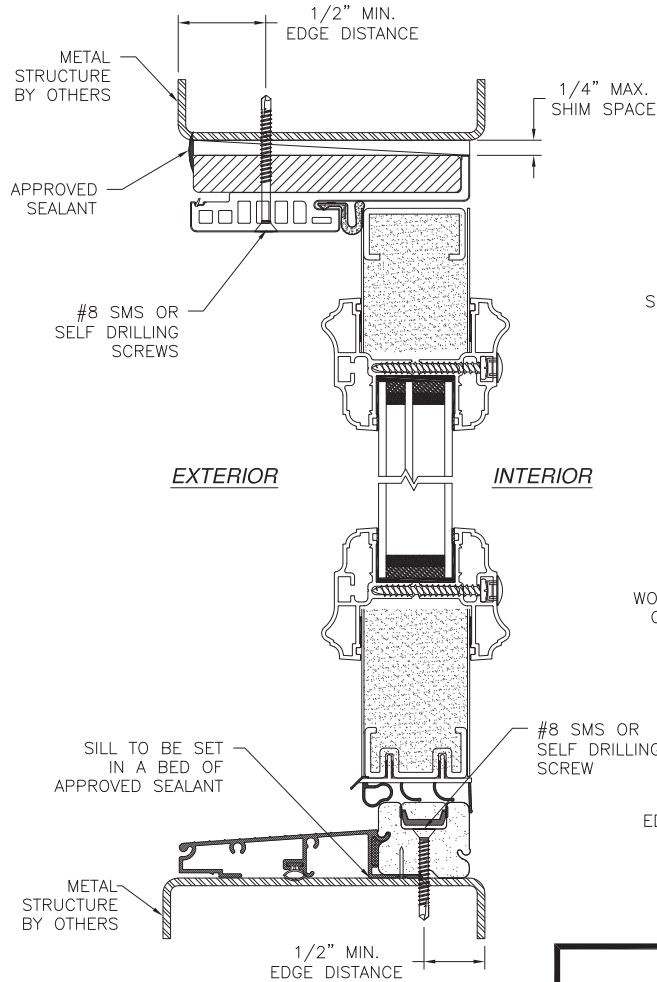
<b>PROVIA, LLC.</b> 2150 STATE ROUTE 39 WEST SUGARCREEK, OH 44681			
STEEL/FIBERGLASS INSWING GLAZED DOOR SINGLE & DOUBLE NON-IMPACT INSTALLATION DETAILS			
DRAWN: N.G.		DWG NO. 08-02066	
SCALE NTS		DATE 06/18/13	REV K
SHEET 4		OF 11	
L. ROBERTO LOMAS P.E. 208 7th Ave, INDIANALANTIC, FL 32903 434-688-0609 rlomas@rlomaspe.com			

LUIS R. LOMAS  
LICENSE  
No. 62514  
STATE OF  
FLORIDA  
PROFESSIONAL ENGINEER

Luis R. Lomas P.E.  
FL No.: 62514



**VERTICAL CROSS SECTION**  
WOOD FRAMING OR 2X BUCK INSTALLATION

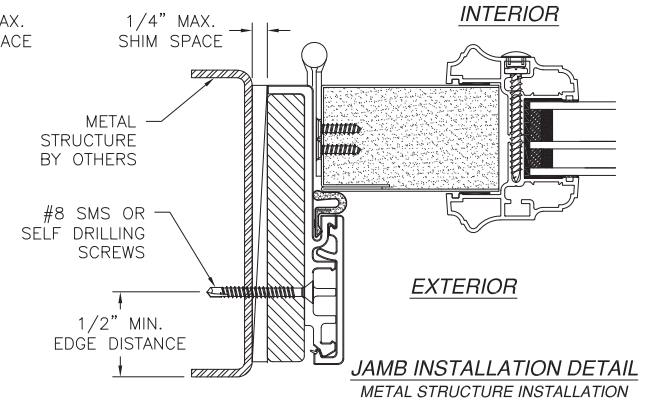


**VERTICAL CROSS SECTION**  
METAL STRUCTURE INSTALLATION

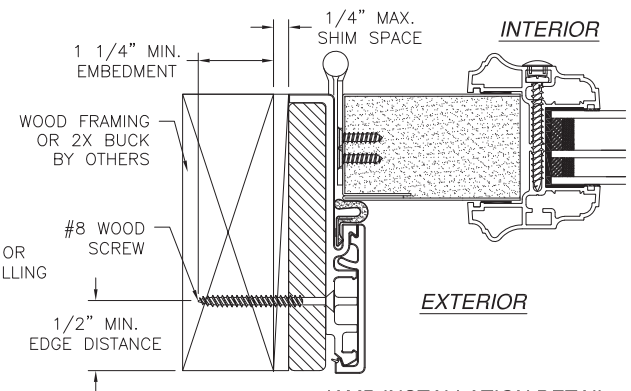
**NOTES:**

1. INTERIOR AND EXTERIOR FINISHES, BY OTHERS, NOT SHOWN FOR CLARITY.
2. PERIMETER AND JOINT SEALANT BY OTHERS TO BE DESIGNED IN ACCORDANCE WITH ASTM E2112

REVISIONS			
REV	DESCRIPTION	DATE	APPROVED
K	REVISE TRIMS AND HARDWARE SCHEDULE	11/02/2023	R.L.



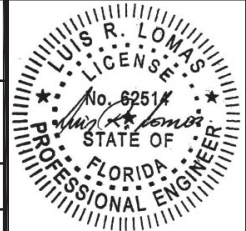
**JAMB INSTALLATION DETAIL**  
METAL STRUCTURE INSTALLATION



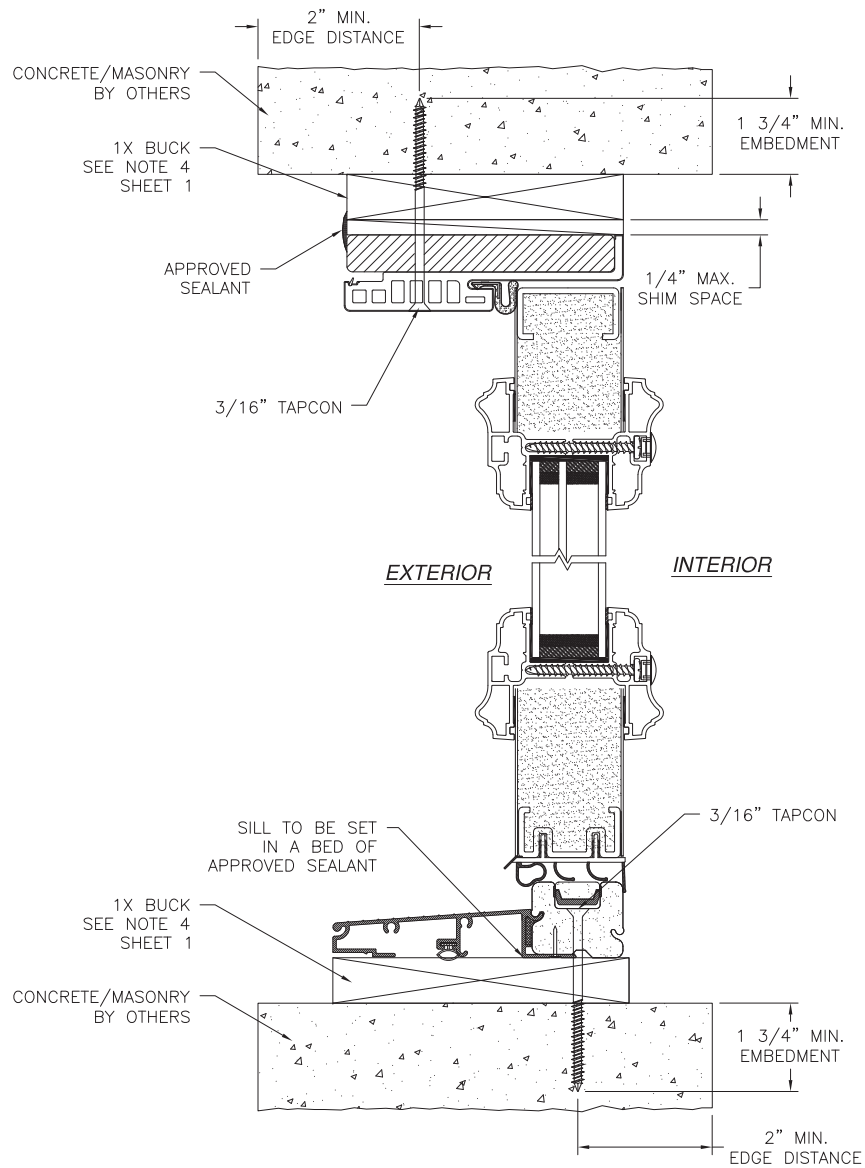
**JAMB INSTALLATION DETAIL**  
WOOD FRAMING OR 2X BUCK INSTALLATION

SIGNED: 11/27/2023

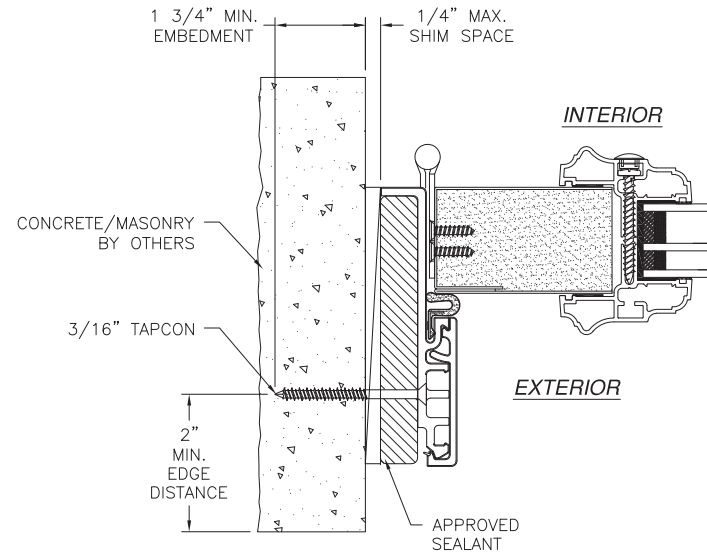
<b>PROVIA, LLC.</b> 2150 STATE ROUTE 39 WEST SUGARCREEK, OH 44681			
STEEL/FIBERGLASS INSWING GLAZED DOOR SINGLE & DOUBLE NON-IMPACT INSTALLATION DETAILS W/FUSION FRAME			
DRAWN: N.G.		DWG NO. 08-02066	
SCALE NTS		DATE 06/18/13	SHEET 5 OF 11
L. ROBERTO LOMAS P.E. 208 7th Ave, INDIANLANTIC, FL 32903 434-688-0609 rllomas@rlomaspe.com			
REV K			



Luis R. Lomas P.E.  
FL No.: 62514



**VERTICAL CROSS SECTION**  
CONCRETE/MASONRY WITH 1X BUCK INSTALLATION  
FOR CONCRETE/MASONRY WITHOUT 1X BUCK REFER TO  
JAMB INSTALLATION DETAIL



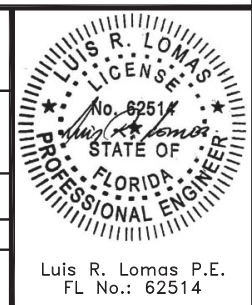
**JAMB INSTALLATION DETAIL**  
CONCRETE/MASONRY WITHOUT 1X BUCK INSTALLATION  
FOR CONCRETE/MASONRY INSTALLATION WITH 1X BUCK REFER TO  
HEAD AND SILL INSTALLATION DETAILS

**NOTES:**

1. INTERIOR AND EXTERIOR FINISHES, BY OTHERS, NOT SHOWN FOR CLARITY.
2. PERIMETER AND JOINT SEALANT BY OTHERS TO BE DESIGNED IN ACCORDANCE WITH ASTM E2112

SIGNED: 11/27/2023

<b>PROVIA, LLC.</b> 2150 STATE ROUTE 39 WEST SUGARCREEK, OH 44681			
STEEL/FIBERGLASS INSWING GLAZED DOOR SINGLE & DOUBLE NON-IMPACT INSTALLATION DETAILS W/FUSION FRAME			
DRAWN: N.G.		DWG NO. 08-02066	
SCALE NTS		DATE 06/18/13	SHEET 6 OF 11
L. ROBERTO LOMAS P.E. 208 7th Ave, INDIANALANTIC, FL 32903 434-688-0609 rllomas@rlomaspe.com			

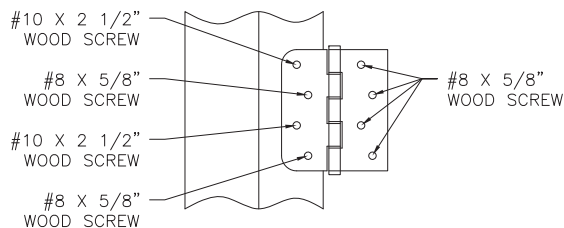


Luis R. Lomas P.E.  
FL No.: 62514

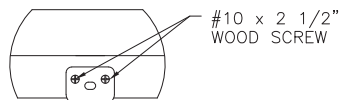
REVISIONS			
REV	DESCRIPTION	DATE	APPROVED
K	REVISE TRIMS AND HARDWARE SCHEDULE	11/02/2023	R.L.



REVISIONS			
REV	DESCRIPTION	DATE	APPROVED
K	REVISE TRIMS AND HARDWARE SCHEDULE	11/02/2023	R.L.



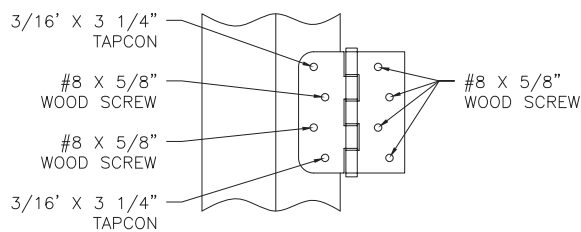
**HINGE INSTALLATION DETAIL**  
2X BUCK/WOOD FRAMING



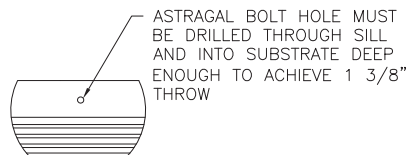
**ASTRAGAL HEAD STRIKE DETAIL**  
2X BUCK/WOOD FRAMING



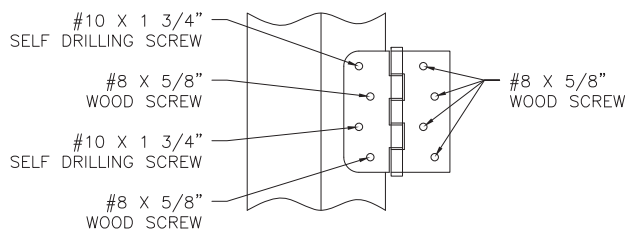
**ASTRAGAL HEAD STRIKE DETAIL**  
MASONRY/CONCRETE



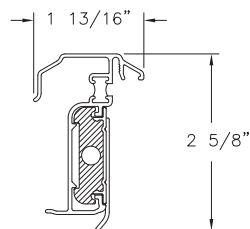
**HINGE INSTALLATION DETAIL**  
MASONRY/CONCRETE



**ASTRAGAL SILL DETAIL**

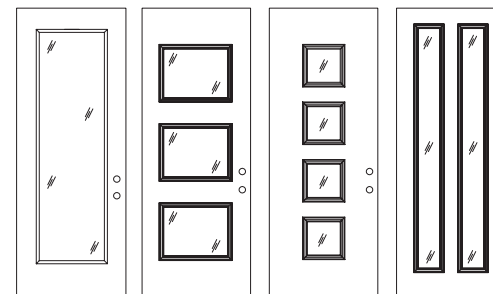


**HINGE INSTALLATION DETAIL**  
METAL STRUCTURE



**HURRICANE ASTRAGAL DETAIL**

**APPROVED LITE CONFIGURATIONS**



**FULL LITE**

**3 LITE**

**4 LITE**

**2 LITE**

LITE CONFIGURATIONS SHOWN ARE FOR REFERENCE ONLY. MULTIPLE LITE CONFIGURATIONS ARE APPROVED AS LONG AS LITE SIZE DOES NOT EXCEED 11.5 FT<sup>2</sup>

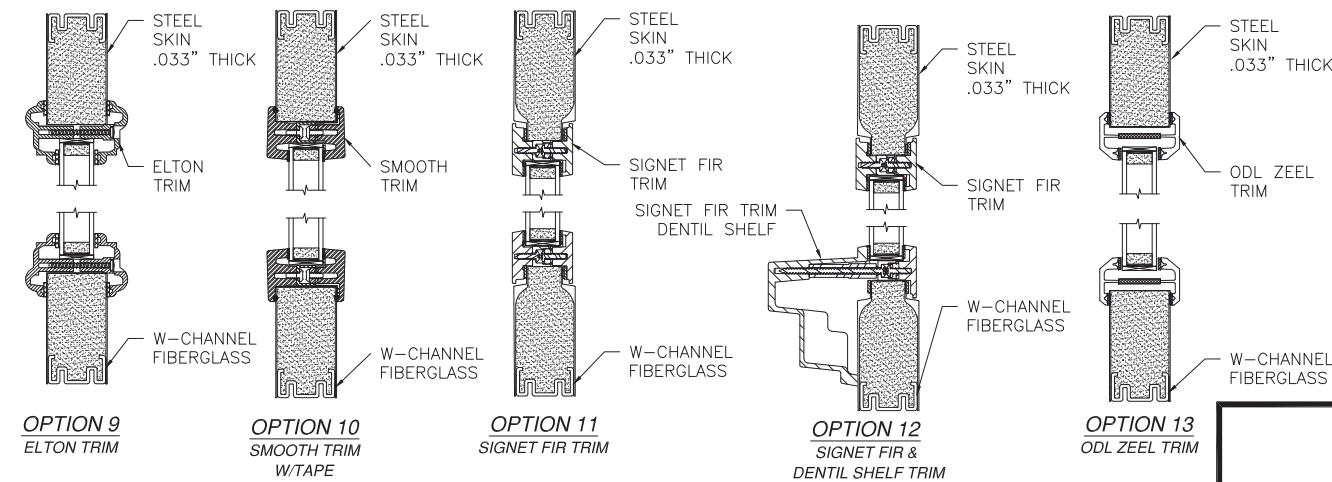
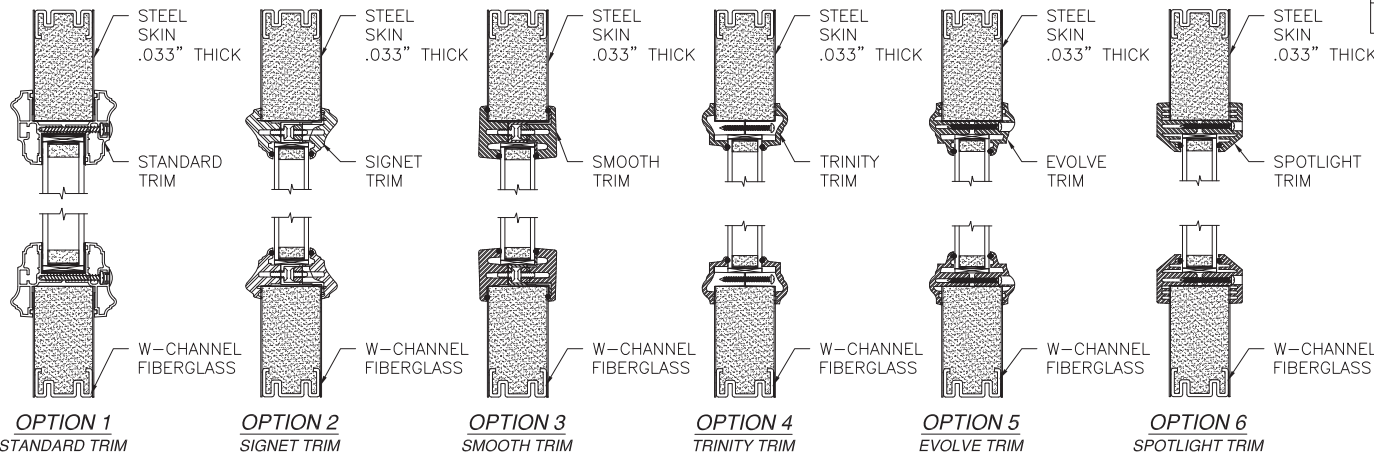
SIGNED: 11/27/2023

PROVIA, LLC. 2150 STATE ROUTE 39 WEST SUGARCREEK, OH 44681		
STEEL/FIBERGLASS INSWING GLAZED DOOR SINGLE & DOUBLE NON-IMPACT INSTALLATION DETAILS AND COMPONENTS		
DRAWN: N.G.	DWG NO. 08-02066	REV K
SCALE NTS	DATE 06/18/13	SHEET 7 OF 11
L. ROBERTO LOMAS P.E. 208 7th Ave, INDIANALANTIC, FL 32903 434-688-0609 rllomas@lrlomaspe.com		

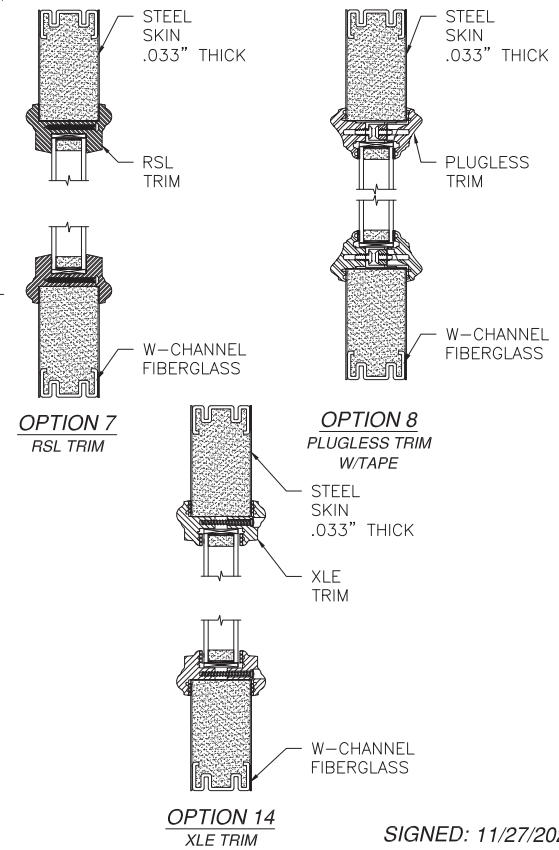
Luis R. Lomas P.E.  
FL No.: 62514







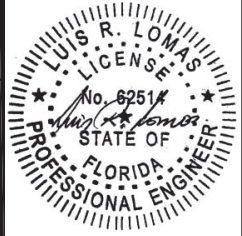
REVISIONS			
REV	DESCRIPTION	DATE	APPROVED
K	REVISE TRIMS AND HARDWARE SCHEDULE	11/02/2023	R.L.



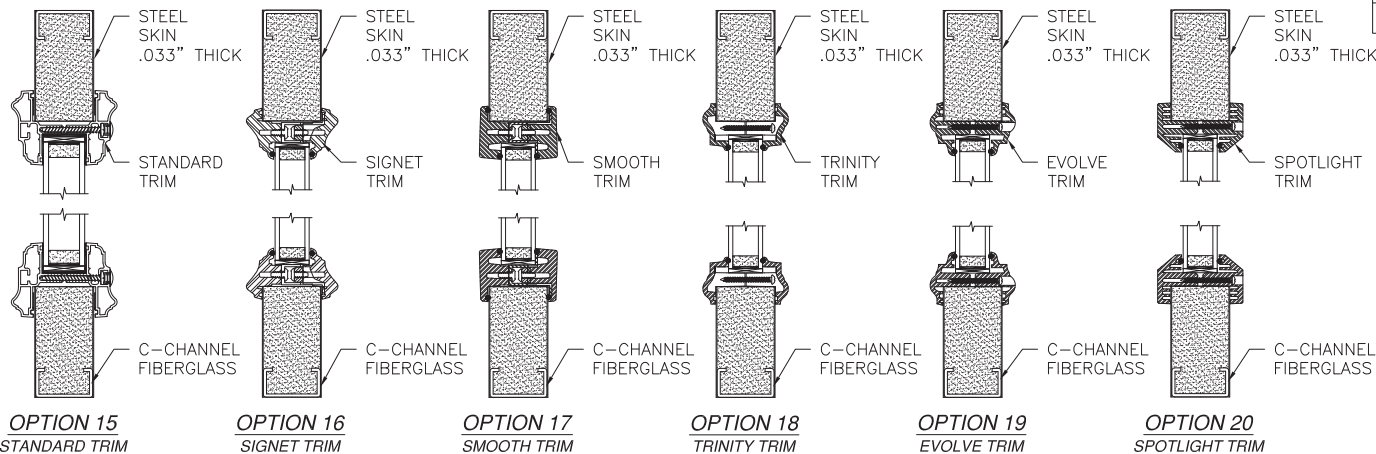
## APPROVED SLABS AND TRIMS

PROVIA, LLC. 2150 STATE ROUTE 39 WEST SUGARCREEK, OH 44681		
STEEL/FIBERGLASS INSWING GLAZED DOOR SINGLE & DOUBLE NON-IMPACT APPROVED SLABS AND TRIMS		
DRAWN: N.G.	DWG NO. 08-02066	REV K
SCALE NTS	DATE 06/18/13	SHEET 8 OF 11
L. ROBERTO LOMAS P.E. 208 7th Ave, INDIANLANTIC, FL 32903 434-688-0609 rlomas@lrlomaspe.com		

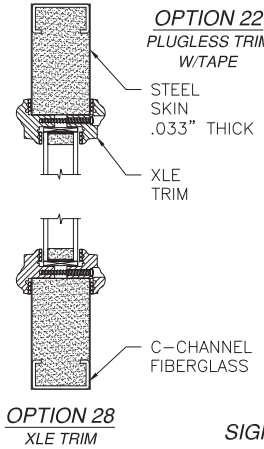
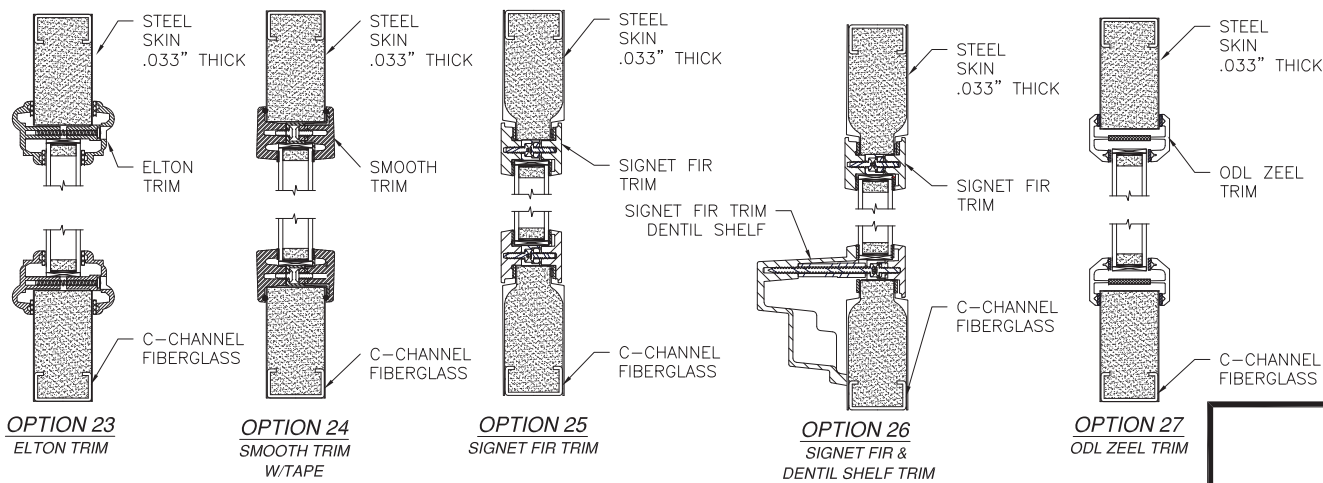
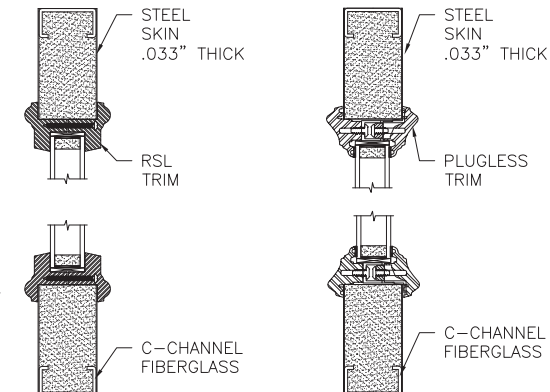
SIGNED: 11/27/2023



Luis R. Lomas P.E.  
FL No.: 62514



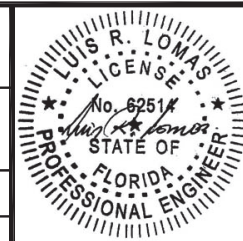
REVISIONS			
REV	DESCRIPTION	DATE	APPROVED
K	REVISE TRIMS AND HARDWARE SCHEDULE	11/02/2023	R.L.



SIGNED: 11/27/2023

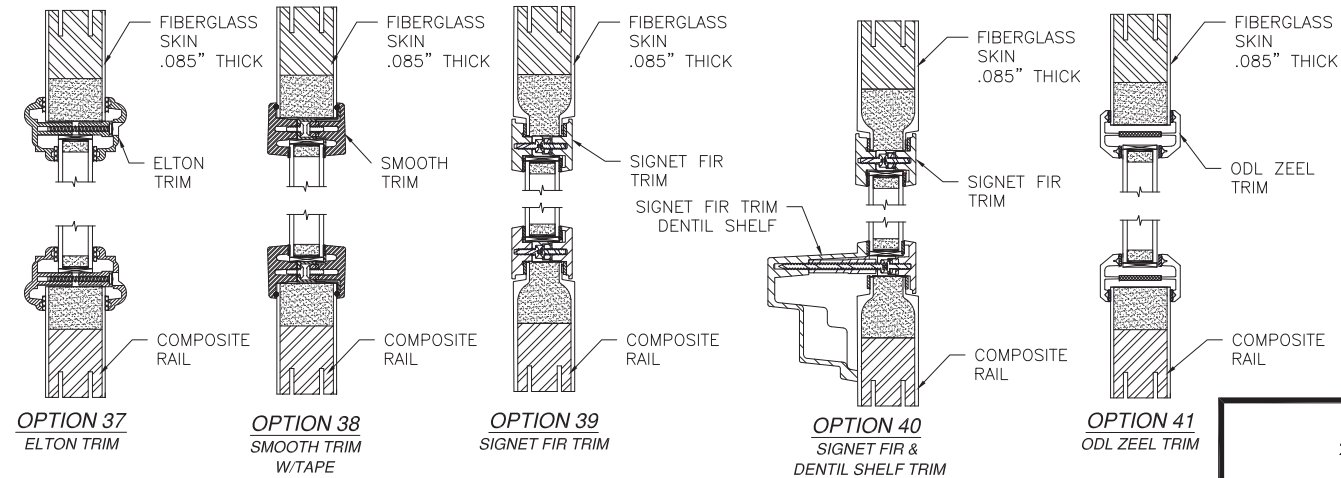
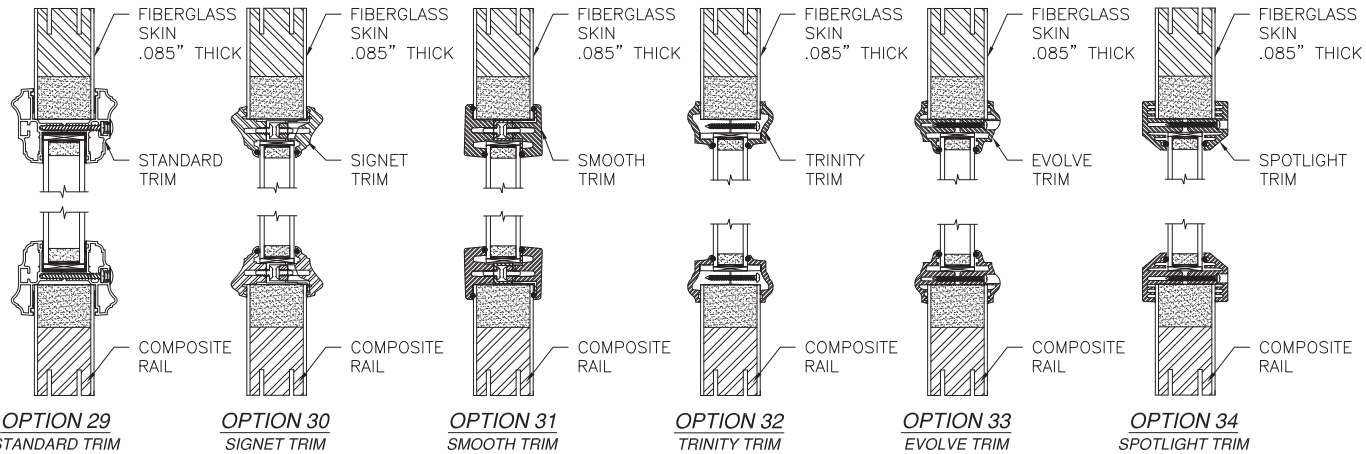
## APPROVED SLABS AND TRIMS

PROVIA, LLC. 2150 STATE ROUTE 39 WEST SUGARCREEK, OH 44681		
STEEL/FIBERGLASS INSWING GLAZED DOOR SINGLE & DOUBLE NON-IMPACT APPROVED SLABS AND TRIMS		
DRAWN: N.G.	DWG NO. 08-02066	REV K
SCALE NTS	DATE 06/18/13	SHEET 9 OF 11
L. ROBERTO LOMAS P.E. 208 7th Ave, INDIANALANTIC, FL 32903 434-688-0609 rllomas@lrlomaspe.com		

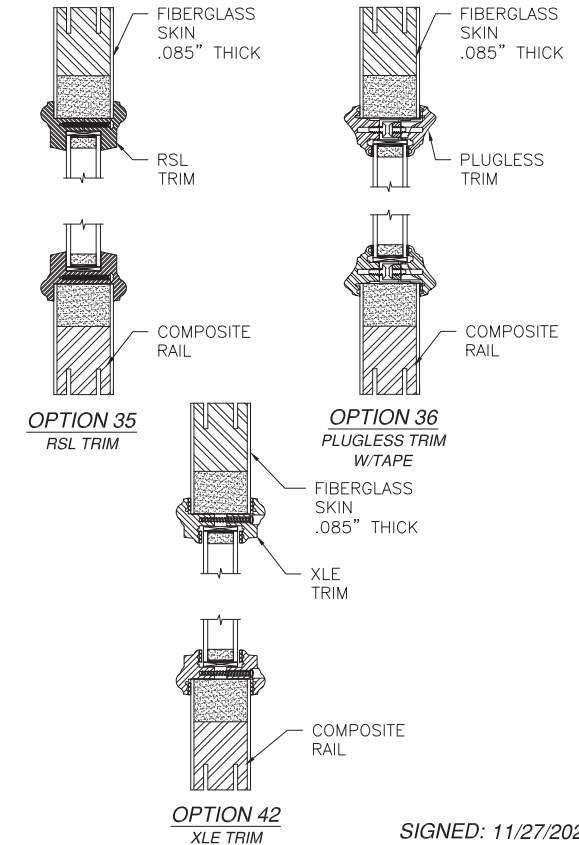


Luis R. Lomas P.E.  
FL No.: 62514





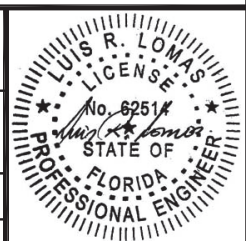
REVISIONS			
REV	DESCRIPTION	DATE	APPROVED
K	REVISE TRIMS AND HARDWARE SCHEDULE	11/02/2023	R.L.



## APPROVED SLABS AND TRIMS

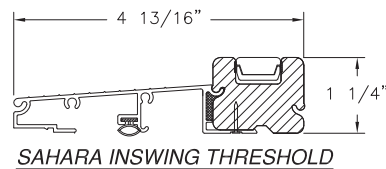
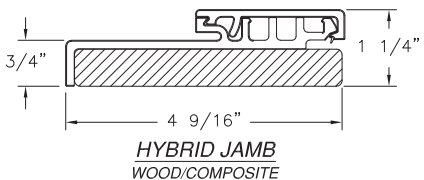
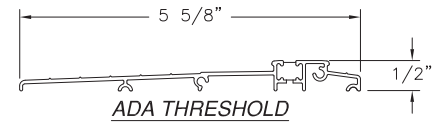
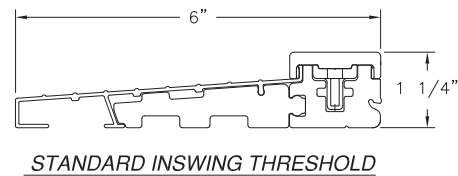
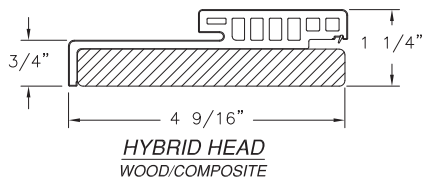
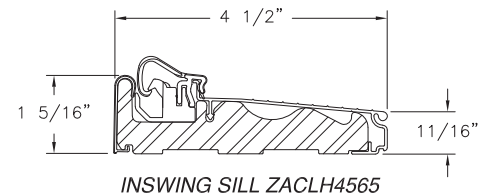
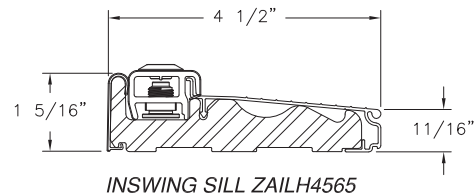
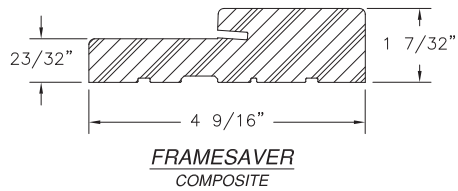
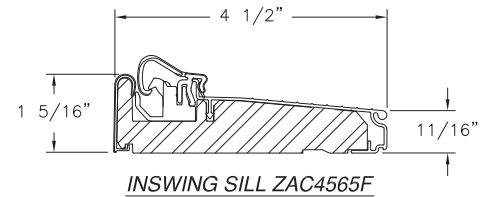
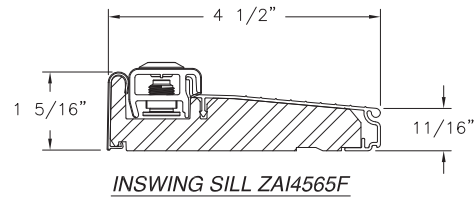
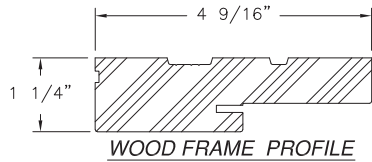
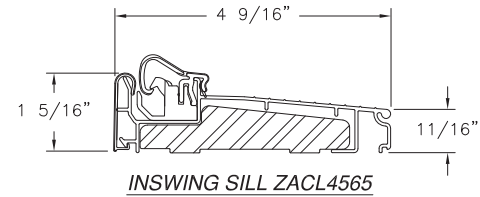
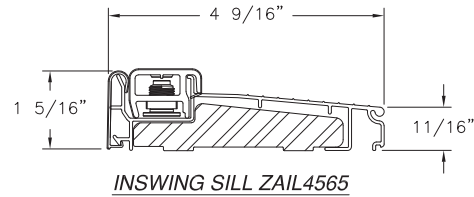
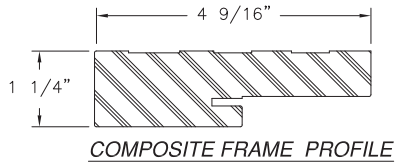
PROVIA, LLC. 2150 STATE ROUTE 39 WEST SUGARCREEK, OH 44681		
STEEL/FIBERGLASS INSWING GLAZED DOOR SINGLE & DOUBLE NON-IMPACT APPROVED SLABS AND TRIMS		
DRAWN: N.G.	DWG NO. 08-02066	REV K
SCALE NTS	DATE 06/18/13	SHEET 10 OF 11
L. ROBERTO LOMAS P.E. 208 7th Ave, INDIANALANTIC, FL 32903 434-688-0609 rllomas@lrlomaspe.com		

SIGNED: 11/27/2023



Luis R. Lomas P.E.  
FL No.: 62514

REVISIONS			
REV	DESCRIPTION	DATE	APPROVED
K	REVISE TRIMS AND HARDWARE SCHEDULE	11/02/2023	R.L.



SIGNED: 11/27/2023

<b>PROVIA, LLC.</b> 2150 STATE ROUTE 39 WEST SUGARCREEK, OH 44681		
STEEL/FIBERGLASS INSWING GLAZED DOOR SINGLE & DOUBLE NON-IMPACT COMPONENTS		
DRAWN: N.G.	DWG NO. 08-02066	REV K
SCALE NTS	DATE 06/18/13	SHEET 11 OF 11
L. ROBERTO LOMAS P.E. 208 7th Ave, INDIALANTIC, FL 32903 434-688-0609 rllomas@lrlomaspe.com		



Luis R. Lomas P.E.  
FL No.: 62514



[BCIS Home](#) | 
 [Log In](#) | 
 [User Registration](#) | 
 [Hot Topics](#) | 
 [Submit Surcharge](#) | 
 [Stats & Facts](#) | 
 [Publications](#) | 
 [Contact Us](#) | 
 [BCIS Site Map](#) | 
 [Links](#) | 
 [Search](#)



**Product Approval**  
USER: Public User

# 12463.15

[Product Approval Menu](#) > [Product or Application Search](#) > [Application List](#) > **Application Detail**



**FL #**  
**Application Type**  
**Code Version**  
**Application Status**

**FL12463-R18**  
**Revision**  
**2023**  
**Approved**

\*Approved by DBPR. Approvals by DBPR shall be reviewed and ratified by the POC and/or the Commission if necessary.

**Comments**  
**Archived**



**Product Manufacturer**  
**Address/Phone/Email**

ProVia LLC. (Doors and Windows) --- Formerly Provia LLC.  
 2150 State Route 39  
 Sugarcreek, OH 44681  
 (330) 852-1774  
[dean.martin@provia.com](mailto:dean.martin@provia.com)

**Authorized Signature**

Cory Mast  
[Cory.Mast@provia.com](mailto:Cory.Mast@provia.com)

**Technical Representative**  
**Address/Phone/Email**

Cory Mast  
 2150 State Route 39  
 Sugarcreek, OH 44681  
 (330) 852-1653  
[cory.mast@provia.com](mailto:cory.mast@provia.com)

**Quality Assurance Representative**  
**Address/Phone/Email**

**Category**  
**Subcategory**

Exterior Doors  
 Swinging Exterior Door Assemblies

**Compliance Method**

Certification Mark or Listing

**Certification Agency**  
**Validated By**

National Accreditation & Management Institute  
 National Accreditation & Management Institute

**Referenced Standard and Year (of Standard)**

<u>Standard</u>	<u>Year</u>
ASTM E330	2014

**Equivalence of Product Standards**  
**Certified By**

Florida Licensed Professional Engineer or Architect  
[FL12463\\_R18\\_Equiv\\_FL12463 ASTM EQ.pdf](#)

**Product Approval Method**

Method 1 Option A

**Date Submitted**

12/23/2023

		FL12463 R18 AE 512797K.pdf Created by Independent Third Party: Yes
12463.15	STEEL/FIBERGLASS OUTSWING GLAZED DOOR - SINGLE & DOUBLE NI	STEEL/FIBERGLASS OUTSWING GLAZED DOOR - SINGLE & DOUBLE NI
<b>Limits of Use</b> <b>Approved for use in HVHZ:</b> No <b>Approved for use outside HVHZ:</b> Yes <b>Impact Resistant:</b> No <b>Design Pressure:</b> N/A <b>Other:</b> REFER TO INSTALLATION INSTRUCTIONS FOR DESIGN PRESSURE RATINGS.		<b>Certification Agency Certificate</b> <a href="#">FL12463 R18 C CAC 12463.21 NI010431.03-R6.pdf</a> <a href="#">FL12463 R18 C CAC 12463.21 NI011593.04-R8.pdf</a> <b>Quality Assurance Contract Expiration Date</b> 12/31/2024 <b>Installation Instructions</b> <a href="#">FL12463 R18 II 08-02073K.pdf</a> Verified By: Luis Roberto Lomas 62514 Created by Independent Third Party: Yes <b>Evaluation Reports</b> <a href="#">FL12463 R18 AE 512787K.pdf</a> Created by Independent Third Party: Yes
12463.16	STEEL/FIBERGLASS OUTSWING GLAZED DOUBLE DOOR W/ SIDELITES & TRANSOM NI	STEEL/FIBERGLASS OUTSWING GLAZED DOUBLE DOOR W/ SIDELITES & TRANSOM NI
<b>Limits of Use</b> <b>Approved for use in HVHZ:</b> No <b>Approved for use outside HVHZ:</b> Yes <b>Impact Resistant:</b> No <b>Design Pressure:</b> N/A <b>Other:</b> REFER TO INSTALLATION INSTRUCTIONS FOR DESIGN PRESSURE RATINGS.		<b>Certification Agency Certificate</b> <a href="#">FL12463 R18 C CAC 12463.22 NI011572.29-R8.pdf</a> <a href="#">FL12463 R18 C CAC 12463.22 NI011595.23-R7.pdf</a> <b>Quality Assurance Contract Expiration Date</b> 12/31/2024 <b>Installation Instructions</b> <a href="#">FL12463 R18 II 08-02079K.pdf</a> Verified By: Luis Roberto Lomas 62514 Created by Independent Third Party: Yes <b>Evaluation Reports</b> <a href="#">FL12463 R18 AE 512793K.pdf</a> Created by Independent Third Party: Yes
12463.17	STEEL/FIBERGLASS OUTSWING GLAZED DOUBLE DOOR W/ SIDELITES NI	STEEL/FIBERGLASS OUTSWING GLAZED DOUBLE DOOR W/ SIDELITES NI
<b>Limits of Use</b> <b>Approved for use in HVHZ:</b> No <b>Approved for use outside HVHZ:</b> Yes <b>Impact Resistant:</b> No <b>Design Pressure:</b> N/A <b>Other:</b> REFER TO INSTALLATION INSTRUCTIONS FOR DESIGN PRESSURE RATINGS.		<b>Certification Agency Certificate</b> <a href="#">FL12463 R18 C CAC 12463.23 NI011572.25-R9.pdf</a> <a href="#">FL12463 R18 C CAC 12463.23 NI011595.19-R7.pdf</a> <b>Quality Assurance Contract Expiration Date</b> 12/31/2024 <b>Installation Instructions</b> <a href="#">FL12463 R18 II 08-02077K.pdf</a> Verified By: Luis Roberto Lomas 62514 Created by Independent Third Party: Yes <b>Evaluation Reports</b> <a href="#">FL12463 R18 AE 512791K.pdf</a> Created by Independent Third Party: Yes
12463.18	STEEL/FIBERGLASS OUTSWING GLAZED DOUBLE DOOR W/ TRANSOM NI	STEEL/FIBERGLASS OUTSWING GLAZED DOUBLE DOOR W/ TRANSOM NI
<b>Limits of Use</b> <b>Approved for use in HVHZ:</b> No <b>Approved for use outside HVHZ:</b> Yes <b>Impact Resistant:</b> No <b>Design Pressure:</b> N/A <b>Other:</b> REFER TO INSTALLATION INSTRUCTIONS FOR DESIGN PRESSURE RATINGS.		<b>Certification Agency Certificate</b> <a href="#">FL12463 R18 C CAC 12463.24 NI011572.27-R8.pdf</a> <a href="#">FL12463 R18 C CAC 12463.24 NI011595.17-R7.pdf</a> <b>Quality Assurance Contract Expiration Date</b> 12/31/2024 <b>Installation Instructions</b> <a href="#">FL12463 R18 II 08-02078K.pdf</a> Verified By: Luis Roberto Lomas 62514 Created by Independent Third Party: Yes <b>Evaluation Reports</b> <a href="#">FL12463 R18 AE 512792K.pdf</a> Created by Independent Third Party: Yes
12463.19	STEEL/FIBERGLASS OUTSWING GLAZED SINGLE DOOR W/ SIDELITES & TRANSOM NI	STEEL/FIBERGLASS OUTSWING GLAZED SINGLE DOOR W/ SIDELITES & TRANSOM NI
<b>Limits of Use</b> <b>Approved for use in HVHZ:</b> No <b>Approved for use outside HVHZ:</b> Yes <b>Impact Resistant:</b> No <b>Design Pressure:</b> N/A <b>Other:</b> REFER TO INSTALLATION INSTRUCTIONS FOR DESIGN PRESSURE RATINGS.		<b>Certification Agency Certificate</b> <a href="#">FL12463 R18 C CAC 12463.25 NI011572.23-R7.pdf</a> <a href="#">FL12463 R18 C CAC 12463.25 NI011595.17-R7.pdf</a> <b>Quality Assurance Contract Expiration Date</b> 12/31/2024 <b>Installation Instructions</b> <a href="#">FL12463 R18 II 08-02076K.pdf</a> Verified By: Luis Roberto Lomas 62514

NOTES:

1. THE PRODUCT SHOWN HEREIN IS DESIGNED AND MANUFACTURED TO COMPLY WITH REQUIREMENTS OF THE FLORIDA BUILDING CODE.
2. WOOD FRAMING, METAL STRUCTURE AND MASONRY OPENING TO BE DESIGNED AND ANCHORED TO PROPERLY TRANSFER ALL LOADS TO STRUCTURE, FRAMING AND MASONRY OPENING IS THE RESPONSIBILITY OF THE ARCHITECT OR ENGINEER OF RECORD.
3. WHERE 1X BUCK IS NOT USED DISSIMILAR MATERIALS MUST BE SEPARATED WITH APPROVED COATING OR MEMBRANE. SELECTION OF COATING OR MEMBRANE IS THE RESPONSIBILITY OF THE ARCHITECT OR ENGINEER OF RECORD.
4. ALLOWABLE STRESS INCREASE OF 1/3 WAS NOT USED IN THE DESIGN OF THE PRODUCT SHOWN HEREIN. WIND LOAD DURATION FACTOR Cd=1.6 WAS USED FOR WOOD ANCHOR CALCULATIONS.
5. FRAME MATERIAL: WOOD WITH G=46 MINIMUM SPECIFIC GRAVITY, OR COMPOSITE, OR FRAMESAYER, OR FUSION FRAME.
6. DOOR SKIN MATERIAL: STEEL .033" THICK (MINIMUM), FIBERGLASS .085" THICK (MINIMUM). UNITS MUST BE GLAZED PER ASTM E1300, WITH SAFETY GLAZING.
7. APPROVED IMPACT PROTECTIVE SYSTEM IS REQUIRED FOR THIS PRODUCT IN WIND BORNE DEBRIS REGIONS.
8. SHIM AS REQUIRED AT EACH INSTALLATION ANCHOR WITH LOAD BEARING SHIM. SHIM WHERE SPACE OF 1/16" OR GREATER OCCURS. MAXIMUM ALLOWABLE SHIM STACK TO BE 1/4".

9. FOR ANCHORING INTO WOOD FRAMING OR 2X BUCK USE #8 WOOD SCREWS WITH SUFFICIENT LENGTH TO ACHIEVE A 1 1/4" MINIMUM EMBEDMENT INTO SUBSTRATE. LOCATE ANCHORS AS SHOWN IN ELEVATIONS AND INSTALLATION DETAILS.
10. FOR ANCHORING INTO MASONRY/CONCRETE USE 3/16" TAPCONS WITH SUFFICIENT LENGTH TO ACHIEVE A 1 3/4" MINIMUM EMBEDMENT INTO SUBSTRATE WITH 2" MINIMUM EDGE DISTANCE. LOCATE ANCHORS AS SHOWN IN ELEVATIONS AND INSTALLATION DETAILS.
11. FOR ANCHORING INTO METAL STRUCTURE USE #8 SMS OR SELF DRILLING SCREWS WITH SUFFICIENT LENGTH TO ACHIEVE 3 THREADS MINIMUM BEYOND STRUCTURE INTERIOR WALL. LOCATE ANCHORS AS SHOWN IN ELEVATIONS AND INSTALLATION DETAILS.
12. ALL FASTENERS TO BE CORROSION RESISTANT.
13. INSTALLATION ANCHORS SHALL BE INSTALLED IN ACCORDANCE WITH ANCHOR MANUFACTURER'S INSTALLATION INSTRUCTIONS AND ANCHORS SHALL NOT BE USED IN SUBSTRATES WITH STRENGTHS LESS THAN THE MINIMUM STRENGTH SPECIFIED BELOW:
  - 13.1. WOOD -- MINIMUM SPECIFIC GRAVITY OF G=0.42
  - 13.2. CONCRETE -- MINIMUM COMPRESSIVE STRENGTH OF 3,192 PSI.
  - 13.3. MASONRY -- GROUT FILLED STRENGTH CONFORMANCE TO ASTM C-90, GRADE N, TYPE 1 (OR GREATER).
  - 13.4. METAL STRUCTURE: STEEL 18GA, 33KSI OR ALUMINUM 6063-T5 .048" THICK MINIMUM

REVISIONS			
REV	DESCRIPTION	DATE	APPROVED
K	REVISE TRIMS AND HARDWARE SCHEDULE	11/07/2023	R.L.

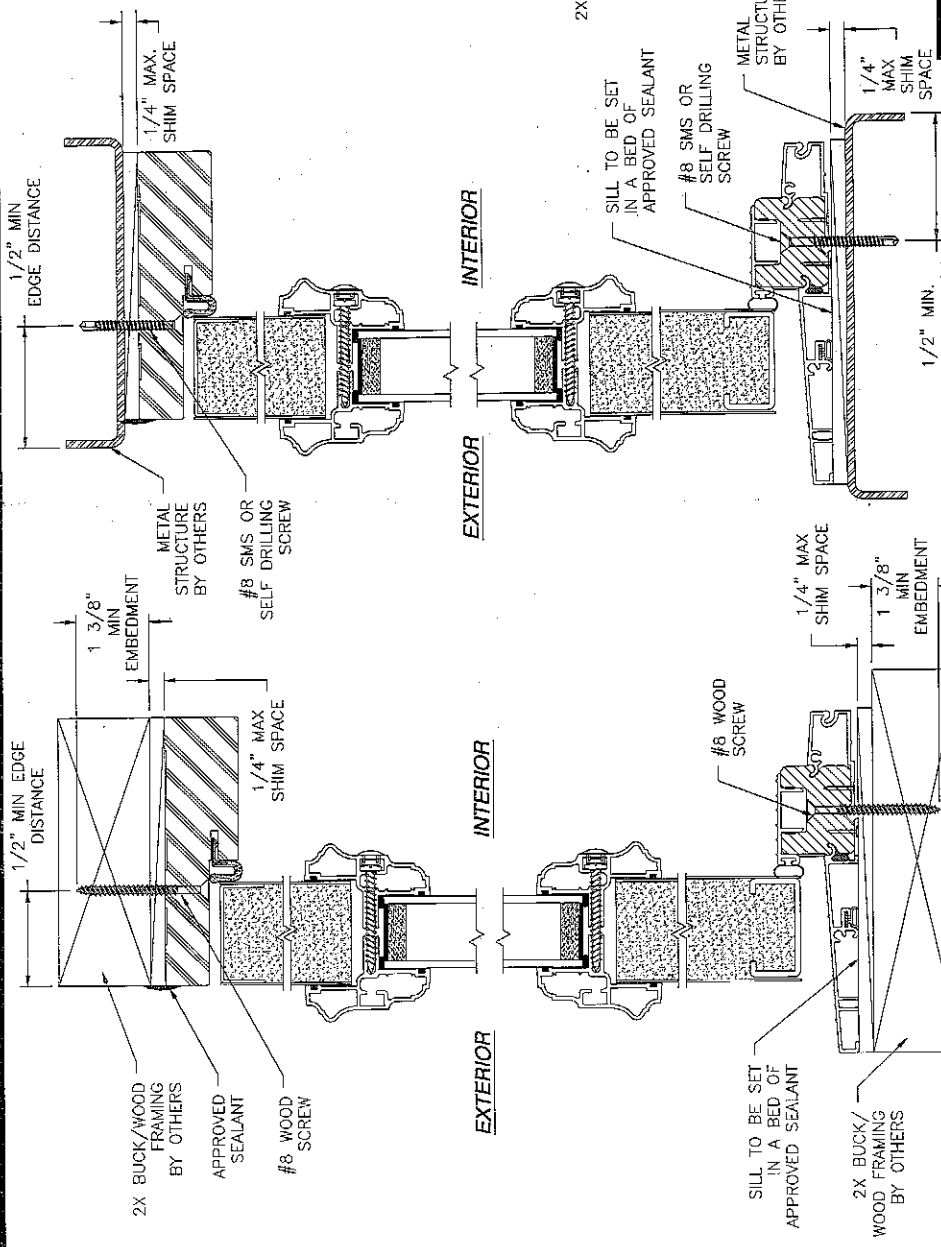
SIGNED: 11/27/2023

PROVIA, LLC. 2150 STATE ROUTE 39 WEST SUGARCREEK, OH 44681	
STEEL/FIBERGLASS OUTSWING GLAZED DOOR SINGLE & DOUBLE NON-IMPACT NOTES	
DRAWN: N.G.	DWG NO. 08-02073
DATE 06/19/13	SHEET 1 OF 11
L. ROBERTO LOMAS P.E. 200 7th Ave, INDIANALANTIC, FL 32903 434-668-0609 rlomas@lthomasp.com	
Luis R. Lomas P.E. FL No.: 62514	

TABLE OF CONTENTS	
SHEET NO.	DESCRIPTION
1	NOTES
2	ELEVATIONS & APPROVED CONFIGURATIONS
3 - 6	INSTALLATION DETAILS
7 - 11	COMPONENTS AND DETAILS



REVISIONS			
REV	DESCRIPTION	DATE	APPROVED
K	REVISE TRIMS AND HARDWARE SCHEDULE	11/07/2023	R.L.



**PROVIA, LLC.**  
 2150 STATE ROUTE 39 WEST  
 SUGARCREEK, OH 44681

STEEL/FIBERGLASS OUTSWING GLAZED DOOR  
 SINGLE & DOUBLE NON-IMPACT  
 INSTALLATION DETAILS

ENGINEER  
 LUIS R. LOMAS P.E.  
 208 7th Ave, INDIANLANTIC, FL 33903  
 434-689-0609 rlomas@rlomaspe.com

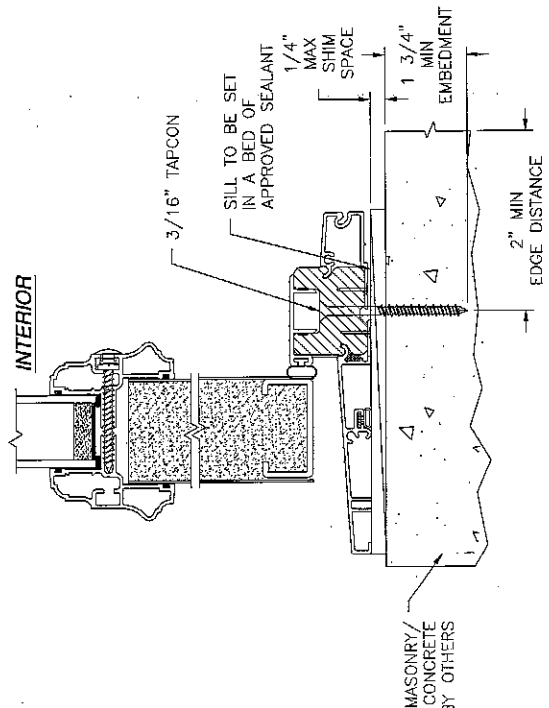
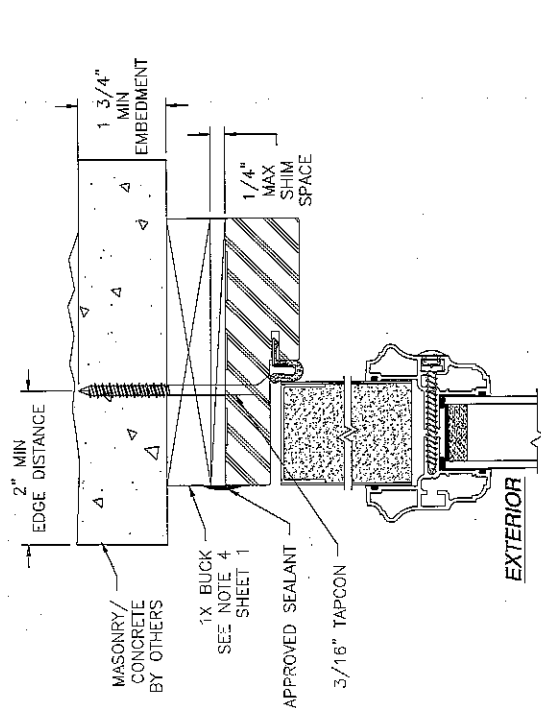
FL No.: 62514

NO. 82514  
 LICENSE  
 STATE OF FLORIDA  
 PROFESSIONAL ENGINEER

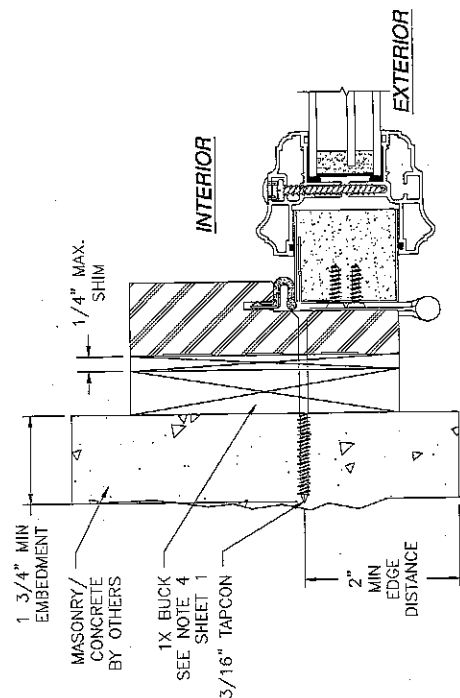
DATE 06/19/13 SHEET 3 OF 11  
 SCALE NTS  
 DRAWN: N.G.  
 REV K  
 DWG NO. 08-02073

- NOTES:
- INTERIOR AND EXTERIOR FINISHES, BY OTHERS, NOT SHOWN FOR CLARITY.
  - PERIMETER AND JOINT SEALANT BY OTHERS TO BE DESIGNED IN ACCORDANCE WITH ASTM E2112

REVISIONS			
REV	DESCRIPTION	DATE	APPROVED
K	REVISE TRIMS AND HARDWARE SCHEDULE	11/07/2023	R.L.



**VERTICAL CROSS SECTION**  
CONCRETE MASONRY INSTALLATION

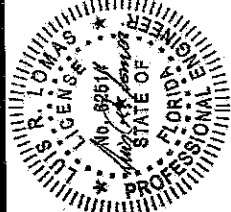


**JAMB INSTALLATION DETAIL**  
CONCRETE MASONRY INSTALLATION

- NOTES:
1. INTERIOR AND EXTERIOR FINISHES, BY OTHERS, NOT SHOWN FOR CLARITY.
  2. PERIMETER AND JOINT SEALANT BY OTHERS TO BE DESIGNED IN ACCORDANCE WITH ASTM E2112

SIGNED: 11/27/2023

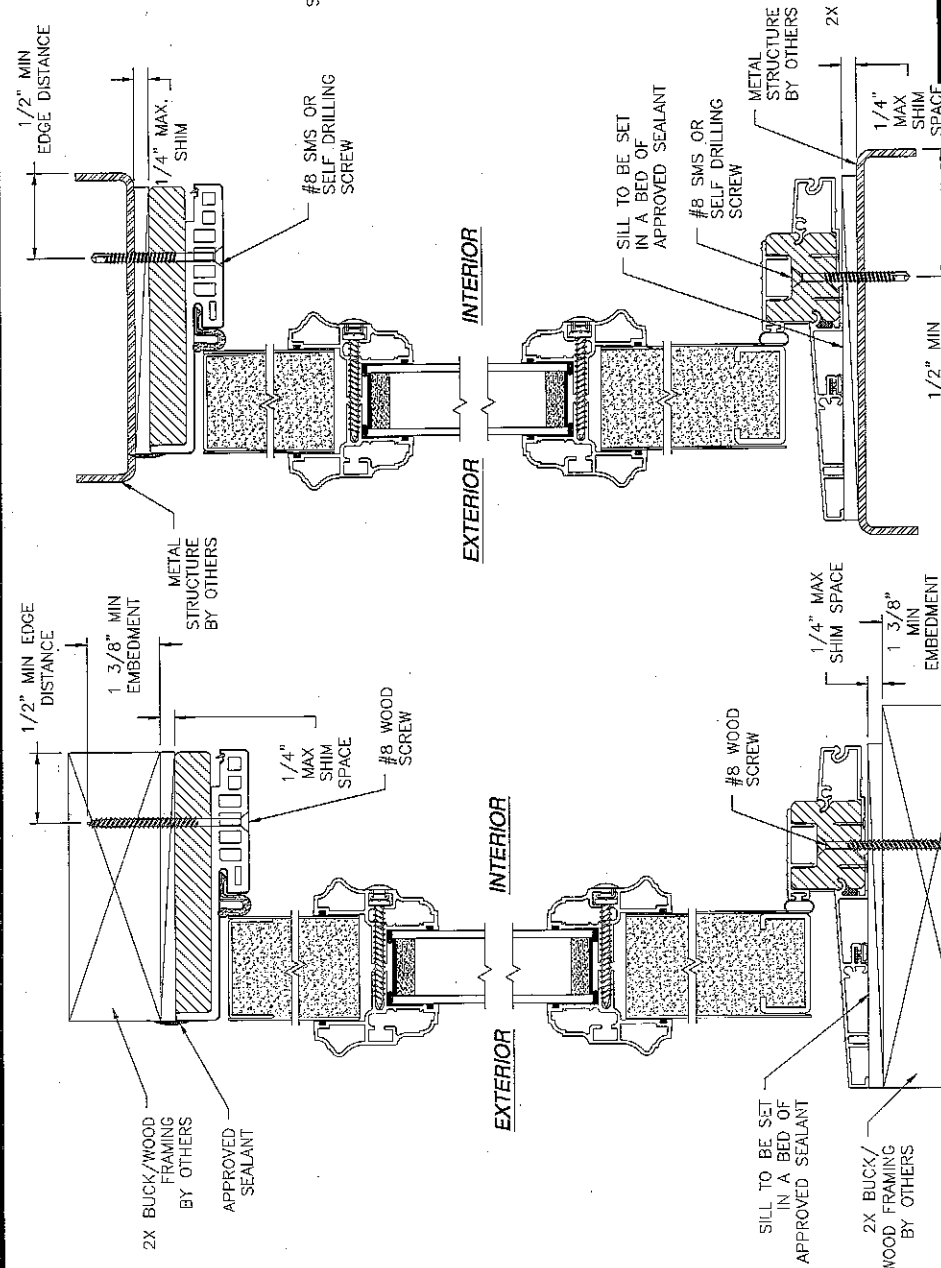
<b>PROVIA, LLC.</b> 2150 STATE ROUTE 39 WEST SUGARCREEK, OH 44681		DRAWN: N.G.	REV K
STEEL/FIBERGLASS OUTSWING GLAZED DOOR SINGLE & DOUBLE NON-IMPACT INSTALLATION DETAILS		DWG NO. 08-02073	SHEET 4 OF 11
SCALE NTS		DATE 06/19/13	L. ROBERTO LOMAS P.E. 208 7th Ave. INDIANAPOLIS, IN 46203 434-588-0909 rloomas@ltomaspa.com



Luis R. Lomas P.E.  
FL No.: 62514



REVISIONS			
REV	DESCRIPTION	DATE	APPROVED
K	REVISE TRIMS AND HARDWARE SCHEDULE	11/07/2023	R.L.



**PROVIA, LLC.**

2150 STATE ROUTE 39 WEST  
SUGARCREEK, OH 44681

**PROFESSIONAL ENGINEER**

NO. 08514  
L. R. LOMAS  
STATE OF FLORIDA

Luis R. Lomas P.E.  
FL No.: 62514

STEEL/FIBERGLASS OUTSWINGING GLAZED DOOR  
SINGLE & DOUBLE NON-IMPACT  
INSTALLATION DETAILS W/FUSION FRAME

DWG NO. 08-02073  
REV K

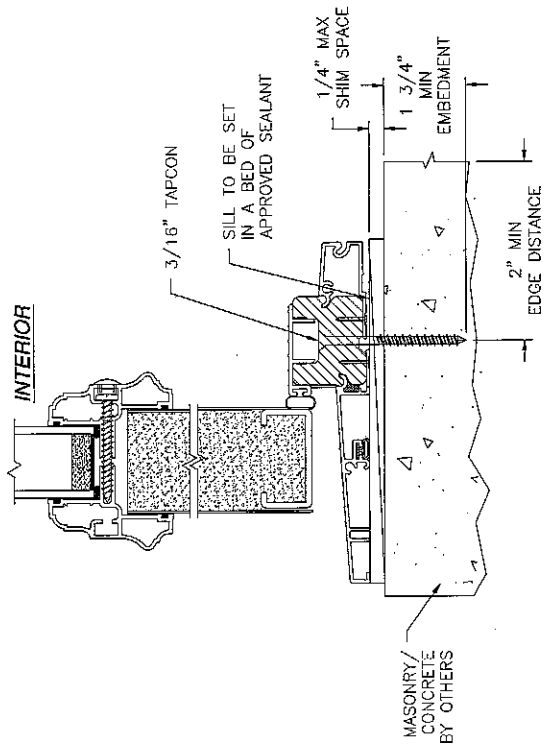
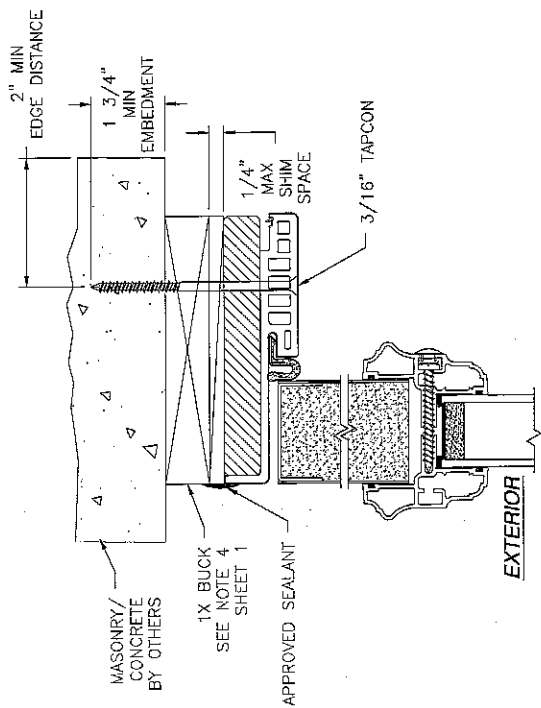
DATE 06/19/13  
SCALE NTS

SHEET 5 OF 11

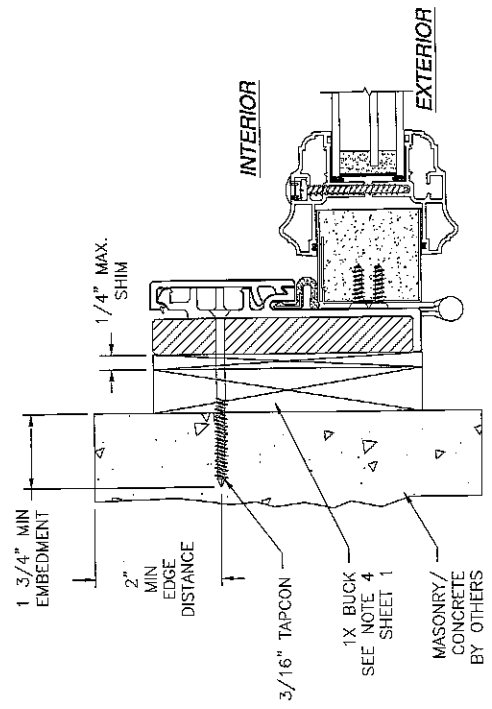
L. ROBERTO LOMAS P.E.  
208 7th Ave, INDIANLAND, FL 39903  
434-588-0509 rloomas@homaspa.com

- NOTES:
- INTERIOR AND EXTERIOR FINISHES, BY OTHERS, NOT SHOWN FOR CLARITY.
  - PERIMETER AND JOINT SEALANT BY OTHERS TO BE DESIGNED IN ACCORDANCE WITH ASTM E2112

REVISIONS			
REV	DESCRIPTION	DATE	APPROVED
K	REVISE TRIMS AND HARDWARE SCHEDULE	11/07/2023	R.L.



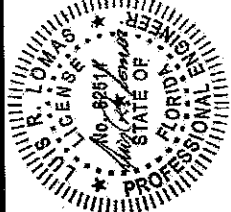
**VERTICAL CROSS SECTION**  
CONCRETE/MASONRY INSTALLATION



**JAMB INSTALLATION DETAIL**  
CONCRETE/MASONRY INSTALLATION

- NOTES:
1. INTERIOR AND EXTERIOR FINISHES, BY OTHERS, NOT SHOWN FOR CLARITY.
  2. PERIMETER AND JOINT SEALANT BY OTHERS TO BE DESIGNED IN ACCORDANCE WITH ASTM E2112

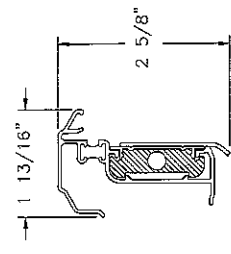
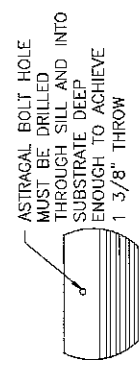
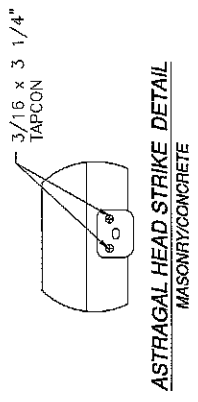
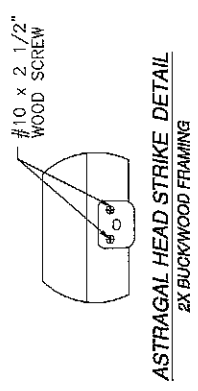
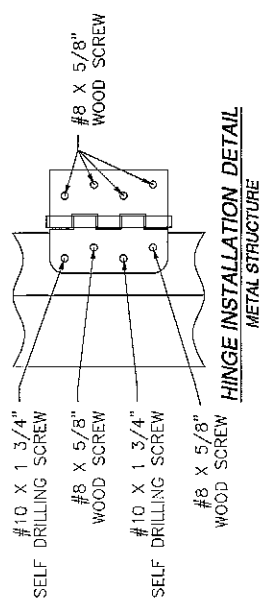
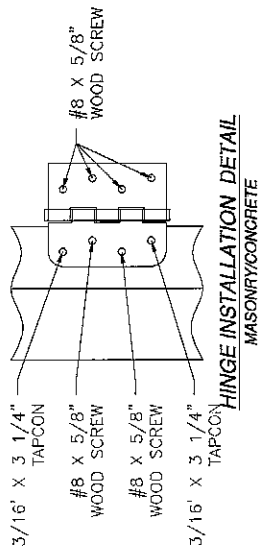
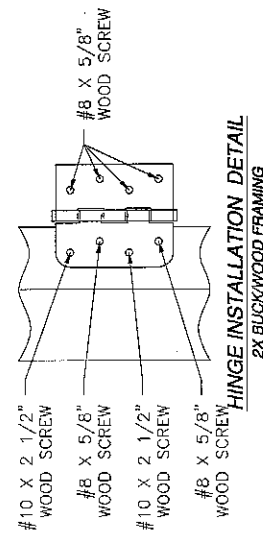
SIGNED: 11/27/2023



Luis R. Lomas P.E.  
FL No.: 62514

PROVIA, LLC.			
2150 STATE ROUTE 39 WEST SUGARCREEK, OH 44681			
STEEL/FIBERGLASS OUTSWINGING GLAZED DOOR SINGLE & DOUBLE NON-IMPACT INSTALLATION DETAILS W/FUSION FRAME			
DRAWN: N.G.	REV K	DWG NO. 08-02073	REV K
SCALE NTS	DATE 06/19/13	SHEET 6	OF 11
L. ROBERTO LOMAS P.E. 203 7th Ave, INDIANLANTIC, FL 33903 434-699-3609 rloomas@lromaspe.com			

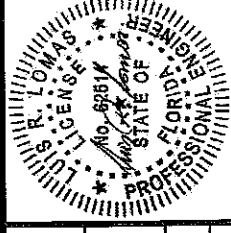
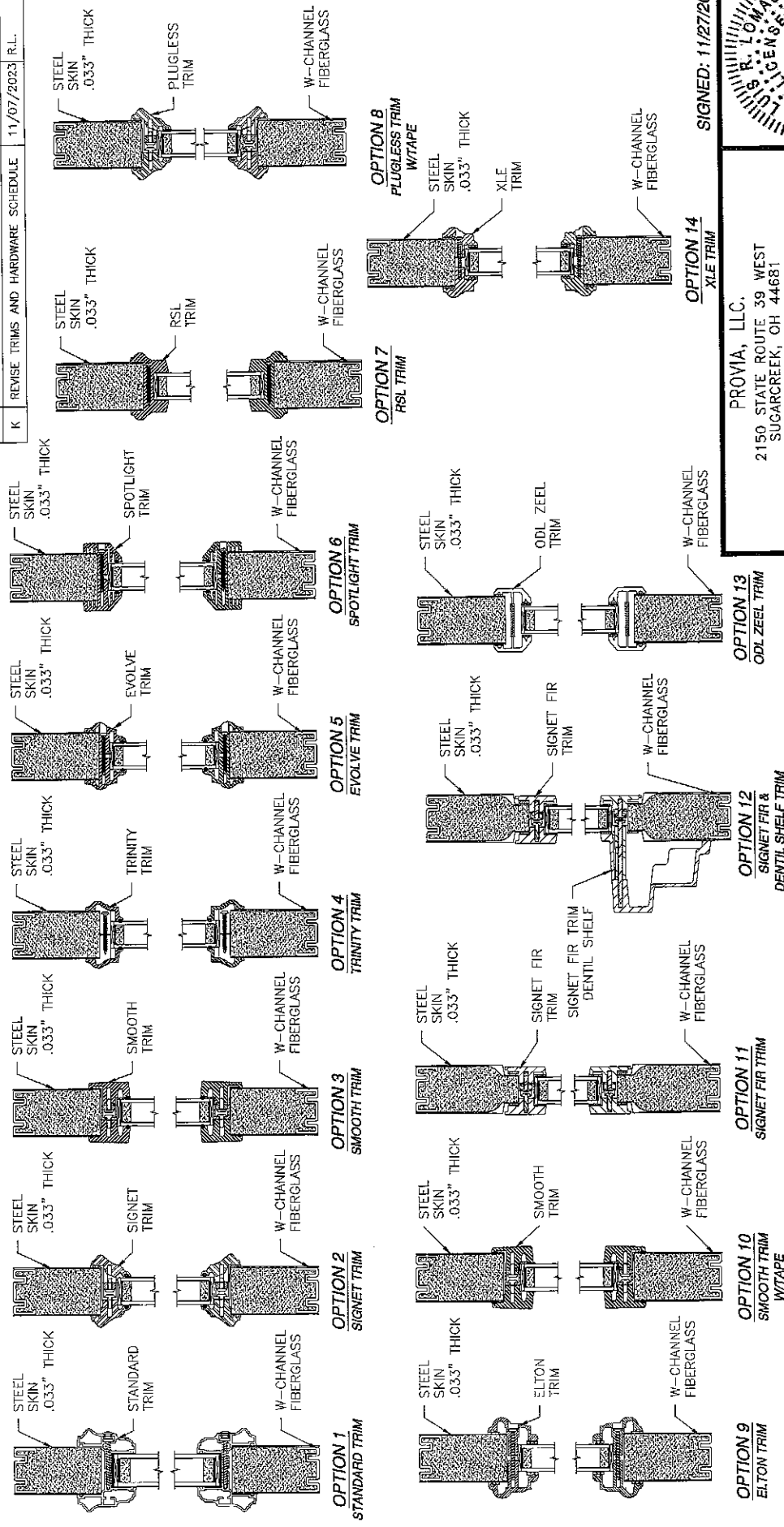
REVISIONS		
REV	DESCRIPTION	DATE
K	REVISIONS AND HARDWARE SCHEDULE	11/07/2023 R.L.



SIGNED: 11/27/2023

<b>PROVIA, LLC.</b> 2150 STATE ROUTE 39 WEST SUGARCREEK, OH 44681		
<b>STEEL/FIBERGLASS OUTSWING GLAZED DOOR</b> SINGLE & DOUBLE NON-IMPACT COMPONENTS DETAILS		
DRAWN: N.C.	DWG NO. 08-02073	REV K
SCALE NTS	DATE 06/19/13	SHEET 7 OF 11
L. ROBERTO LOMAS P.E. 208 7th Ave. INDIANAPOLIS, IN 46203 434-686-0808 rloomas@lomaspe.com		
Luis R. Lomas P.E. FL No.: 62514		

REVISIONS			
REV	DESCRIPTION	DATE	APPROVED
K	REVISE TRIMS AND HARDWARE SCHEDULE	11/07/2023	R.L.



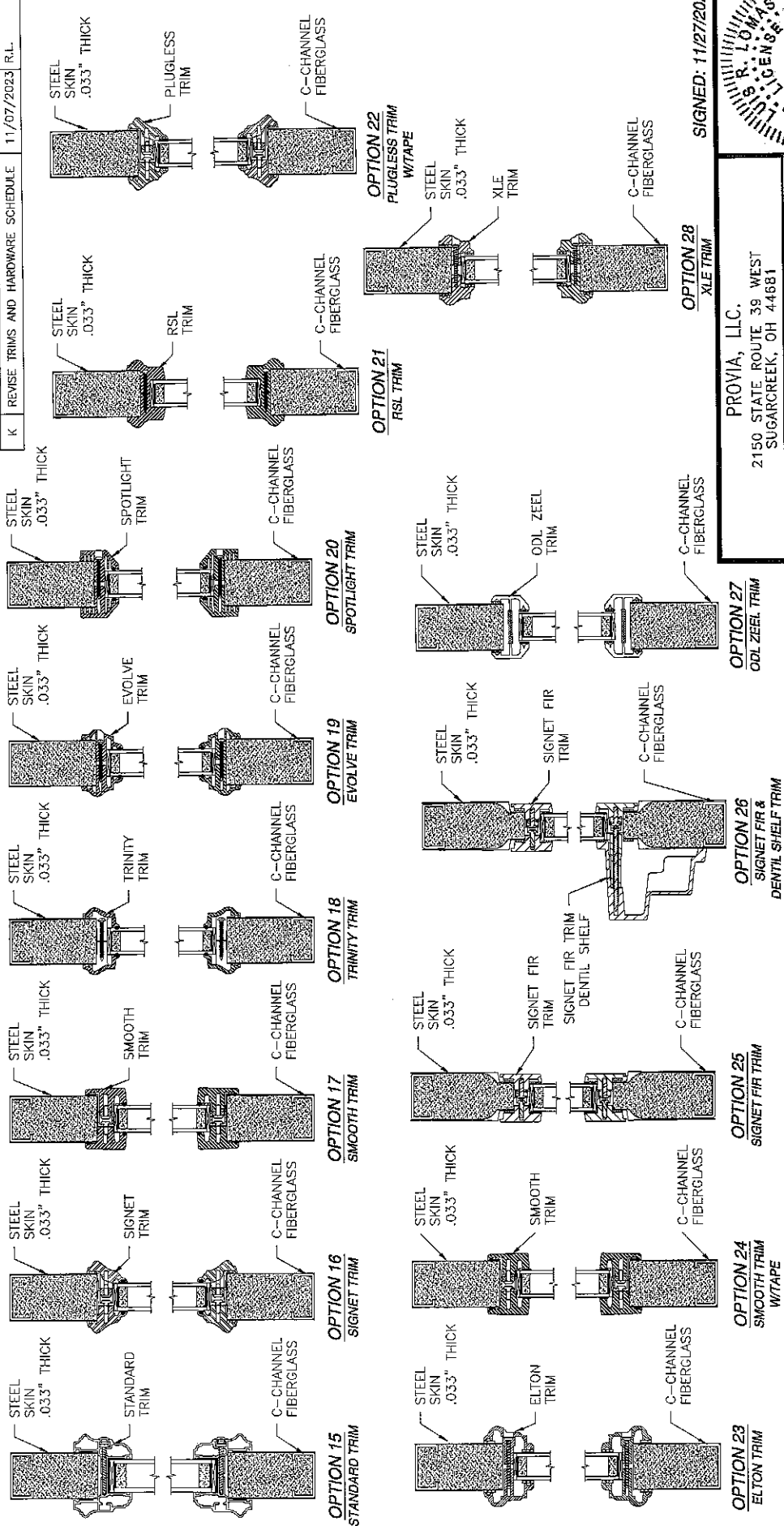
Luis R. Lomas P.E.  
FL No.: 62514

PROVIA, LLC.			
2150 STATE ROUTE 39 WEST SUGARCREEK, OH 44681			
STEEL/FIBERGLASS OUTSWING GLAZED DOOR SINGLE & DOUBLE NON-IMPACT APPROVED SLABS AND TRIMS			
DRAWN N.C.	DWG. NO. 08-02073	REV K	
SCALE NTS	DATE 06/19/13	SHEET 8	OF 11
L. ROBERTO LOMAS P.E. 208 7th Ave, INDIANLANTIC, FL 33603 434-686-0600 rloomas@homasp.com			

SIGNED: 11/27/2023

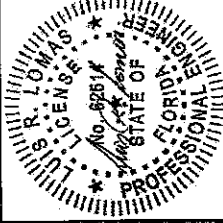
# APPROVED SLABS AND TRIMS

REVISIONS			
REV	DESCRIPTION	DATE	APPROVED
K	REVISE TRIMS AND HARDWARE SCHEDULE	11/07/2023	R.L.



# APPROVED SLABS AND TRIMS

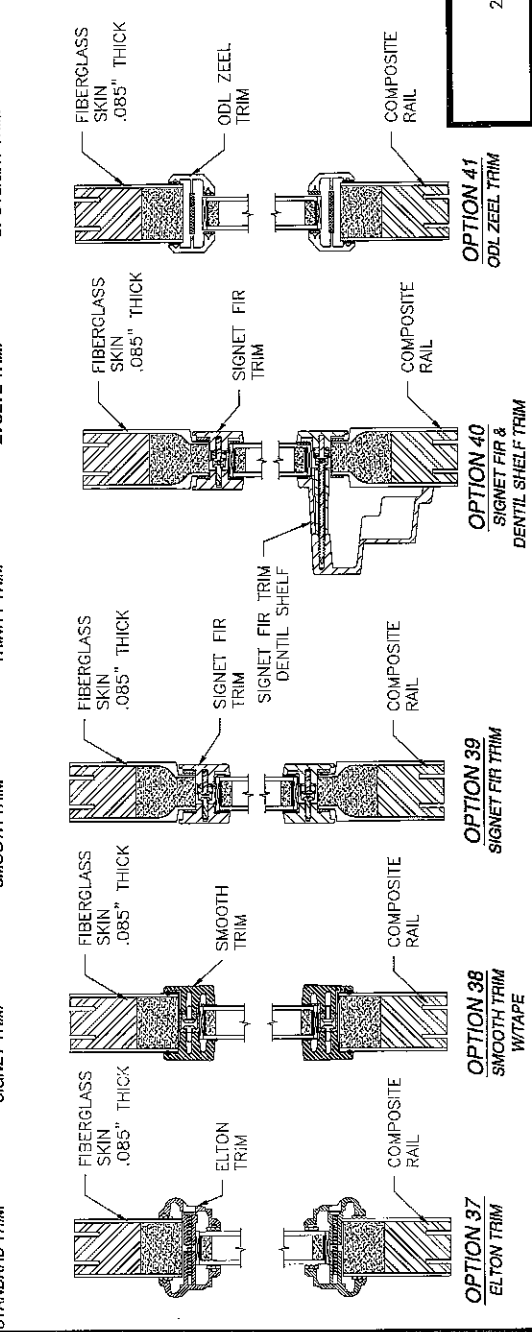
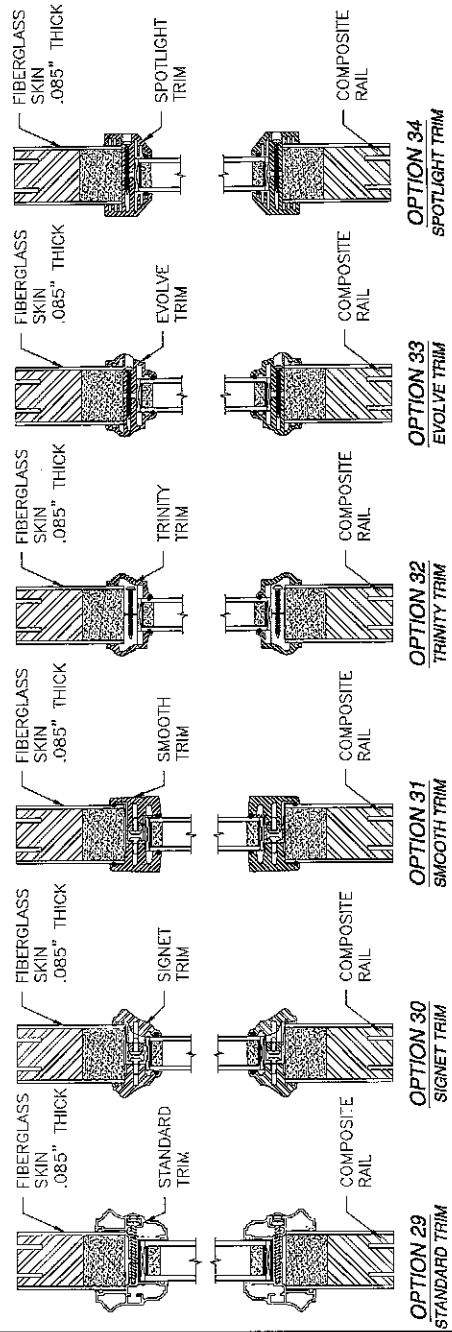
SIGNED: 11/27/2023



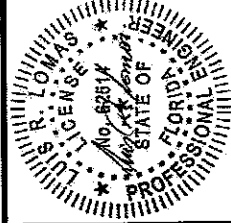
Luis R. Lomas P.E.  
FL No.: 62514

PROVIA, LLC.		2150 STATE ROUTE 39 WEST SUGARCREEK, OH 44681	
STEEL/FIBERGLASS OUTSWING GLAZED DOOR SINGLE & DOUBLE NON-IMPACT APPROVED SLABS AND TRIMS			
DRAWN: N.G.	DWG NO. 08-02073	DATE 06/19/13	REV K
SCALE NTS	SHEET 9	OF 11	
L. ROBERTO LOMAS P.E. 204 7th Ave. NW ATLANTA, GA 30303 404-686-0609 rlomas@lomaspa.com			

REVISIONS			
REV	DESCRIPTION	DATE	APPROVED
K	REVISE TRIMS AND HARDWARE SCHEDULE	11/07/2023	R.L.



SIGNED: 11/27/2023

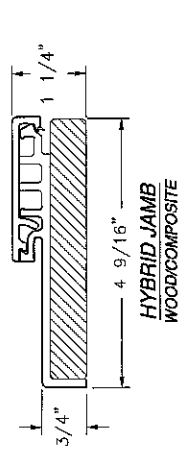
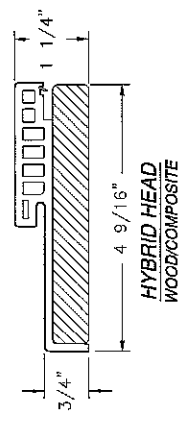
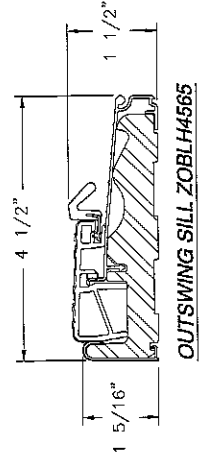
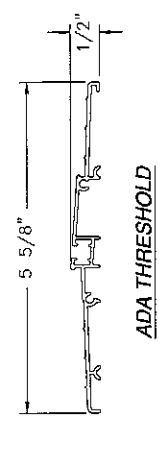
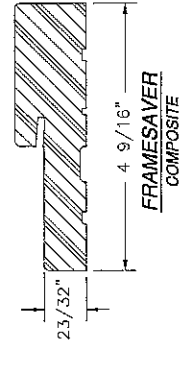
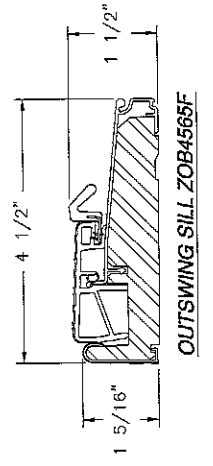
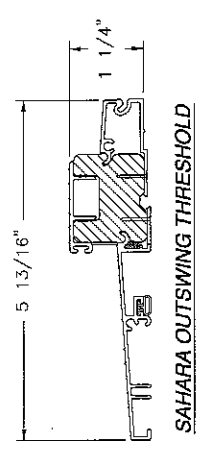
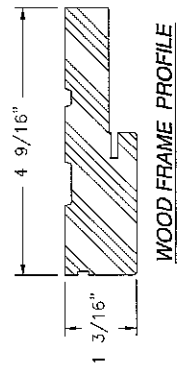
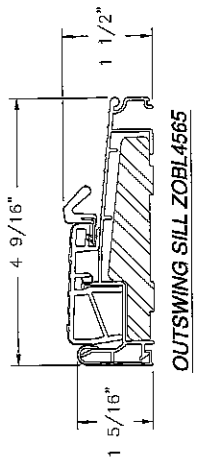
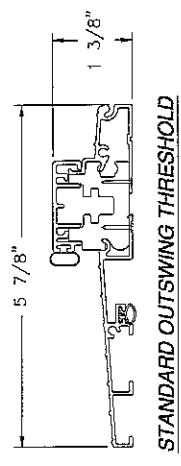
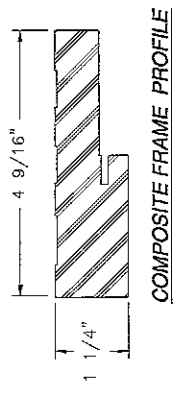


Luis R. Lomas P.E.  
FL No.: 62514

PROVIA, LLC. 2150 STATE ROUTE 39 WEST SUGARCREEK, OH 44681	
STEEL/FIBERGLASS OUTSWING GLAZED DOOR SINGLE & DOUBLE NON-IMPACT APPROVED SLABS AND TRIMS	
DRAWN: N.G.	DATE: 06/19/13
SCALE: NTS	SHEET 10 OF 11
DWG NO.: 08-02073	REV: K
L. ROBERTO LOMAS P.E. 208 7th Ave, INDIANAPOLIS, FL 33003 434-688-0603 rlomas@lomaspe.com	

APPROVED SLABS AND TRIMS

REVISIONS			
REV	DESCRIPTION	DATE	APPROVED
K	REVISE TRIMS AND HARDWARE SCHEDULE	11/07/2023	R.L.



**PROVIA, LLC.**  
2150 STATE ROUTE 39 WEST  
SUGARCREEK, OH 44681

STEEL/FIBERGLASS OUTSWING GLAZED DOOR  
SINGLE & DOUBLE NON-IMPACT  
COMPONENTS

DRAWN: N.G.  
DATE: 06/19/13  
SCALE: NTS

SIGNED: 11/27/2023

PROFESSIONAL ENGINEER  
STATE OF FLORIDA  
No. 82514  
Luis R. Lomas P.E.  
FL No.: 62514

DWG. NO. 08-02073  
SHEET 11 OF 11

L. ROBERTO LOMAS P.E.  
208 7th Ave. INDIANATIG, FL 32003  
434-565-0800 rlomas@rlomaspa.com

REV K