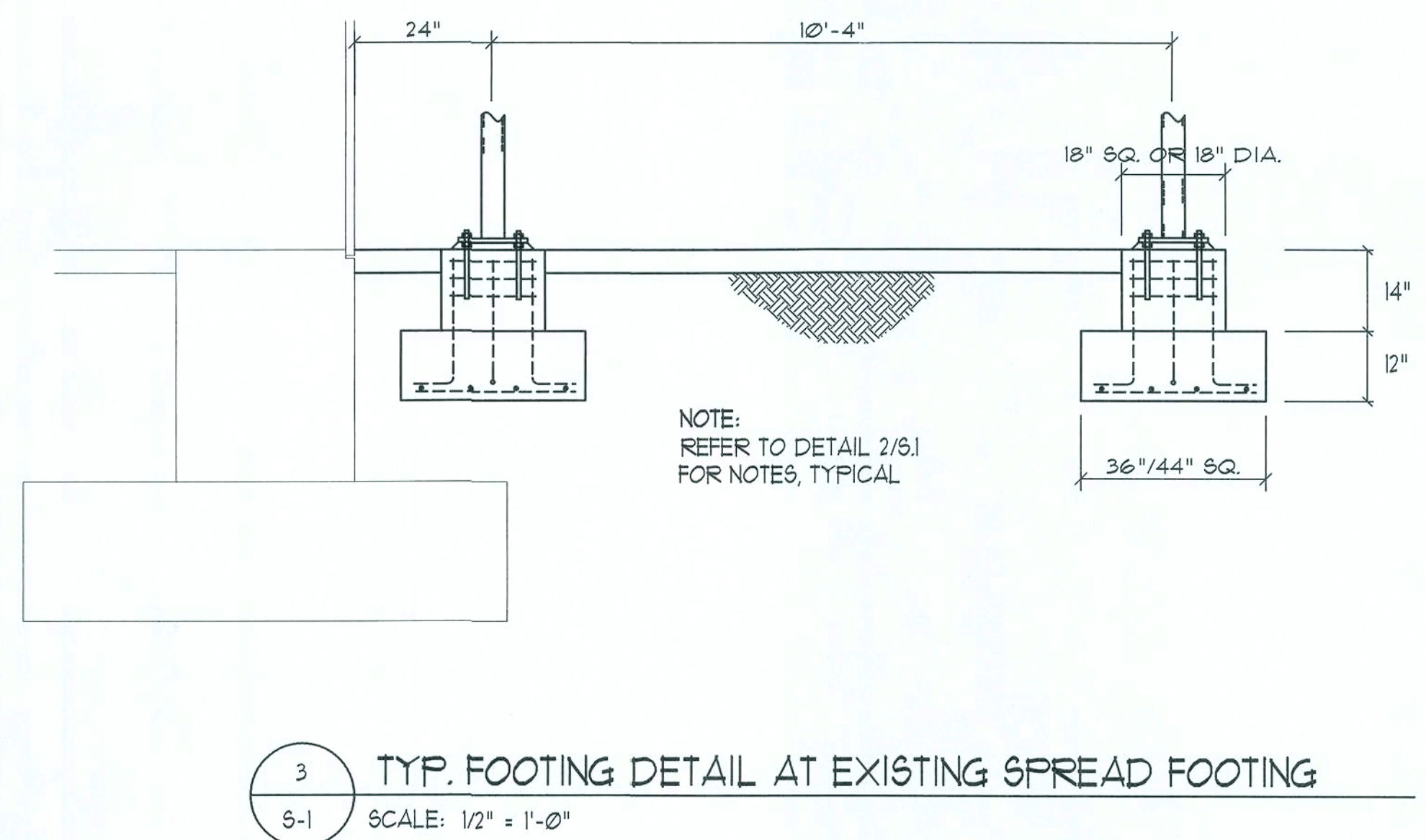
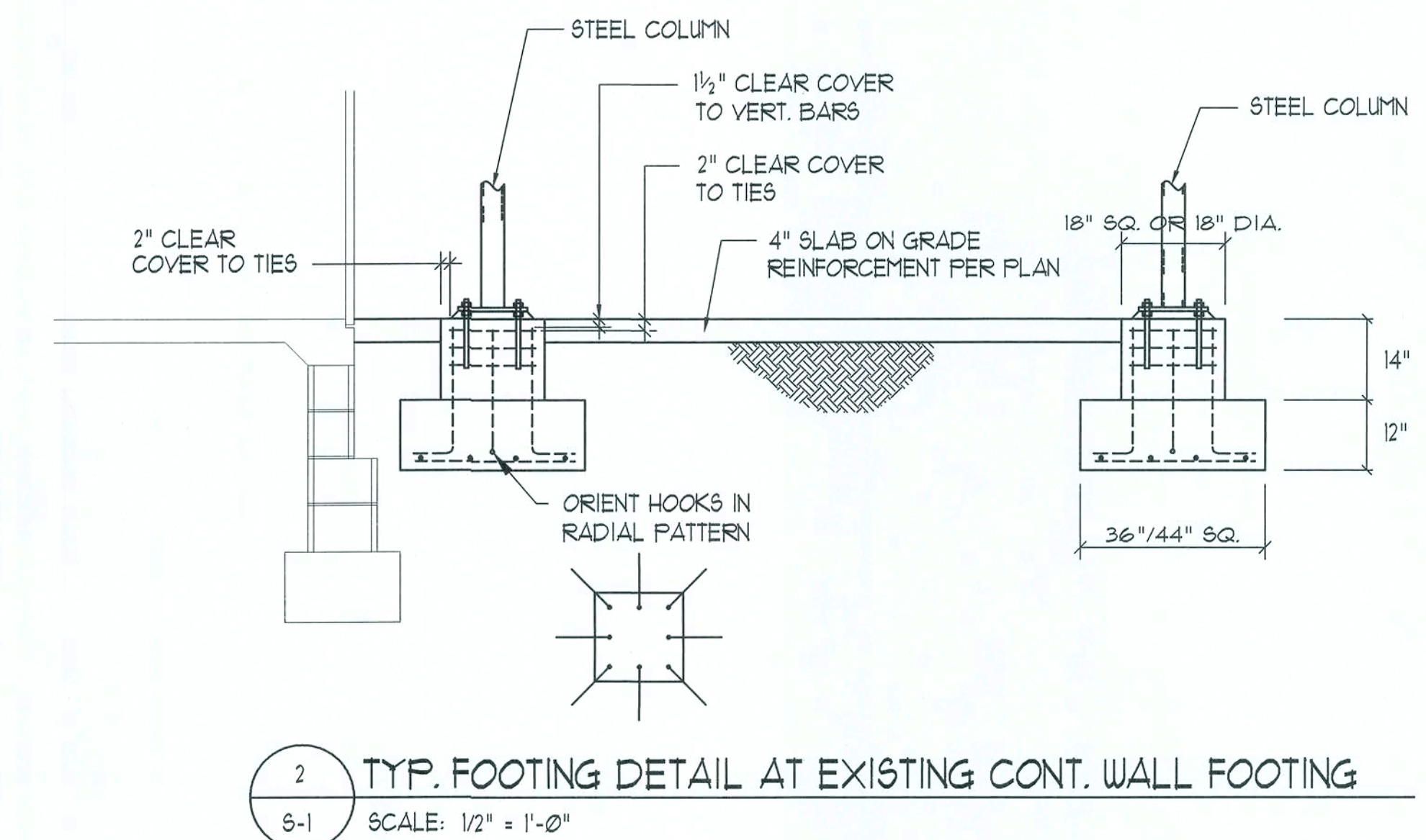
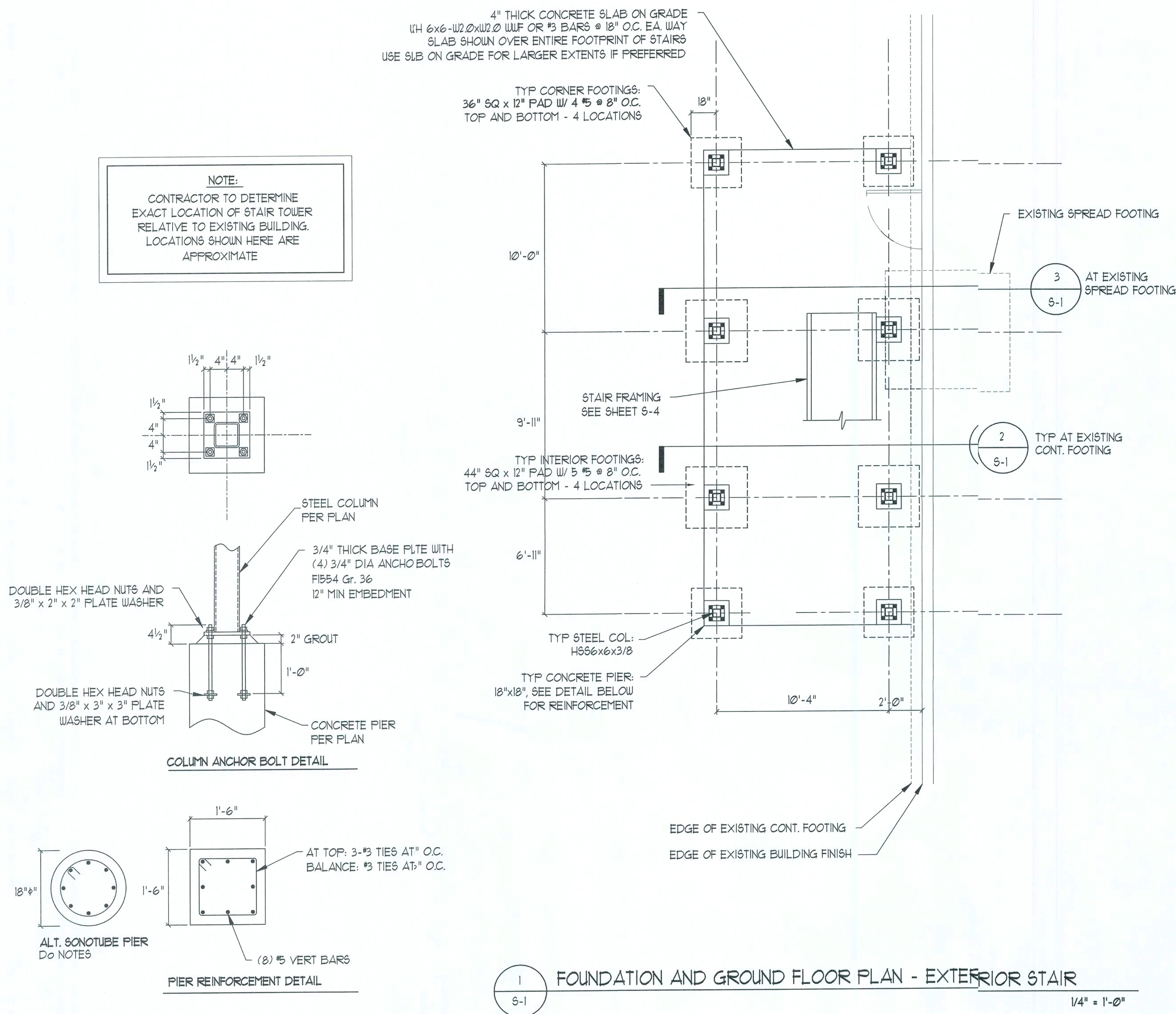


These drawings, as instruments of service, are the sole property of the architect, and may not be used, copied or reproduced in whole or in part for use on or incorporated within any other job without specific and individual authorization by the architect.



Digitally signed by: N. P. GEISLER
DN: CN = N. P. GEISLER C = US
O = ARCHITECT
ARCHITECT
Date: 2021.04.30 15:51:48 -0500

REVISION:
Copyright 2019
N.P. Geisler, Architect
DIWNR
178
NEW STAIR TOWER FOR:
BELMONT ACADEMY
COLUMBIA COUNTY, FLORIDA
FOUNDATION PLAN & DETAILS

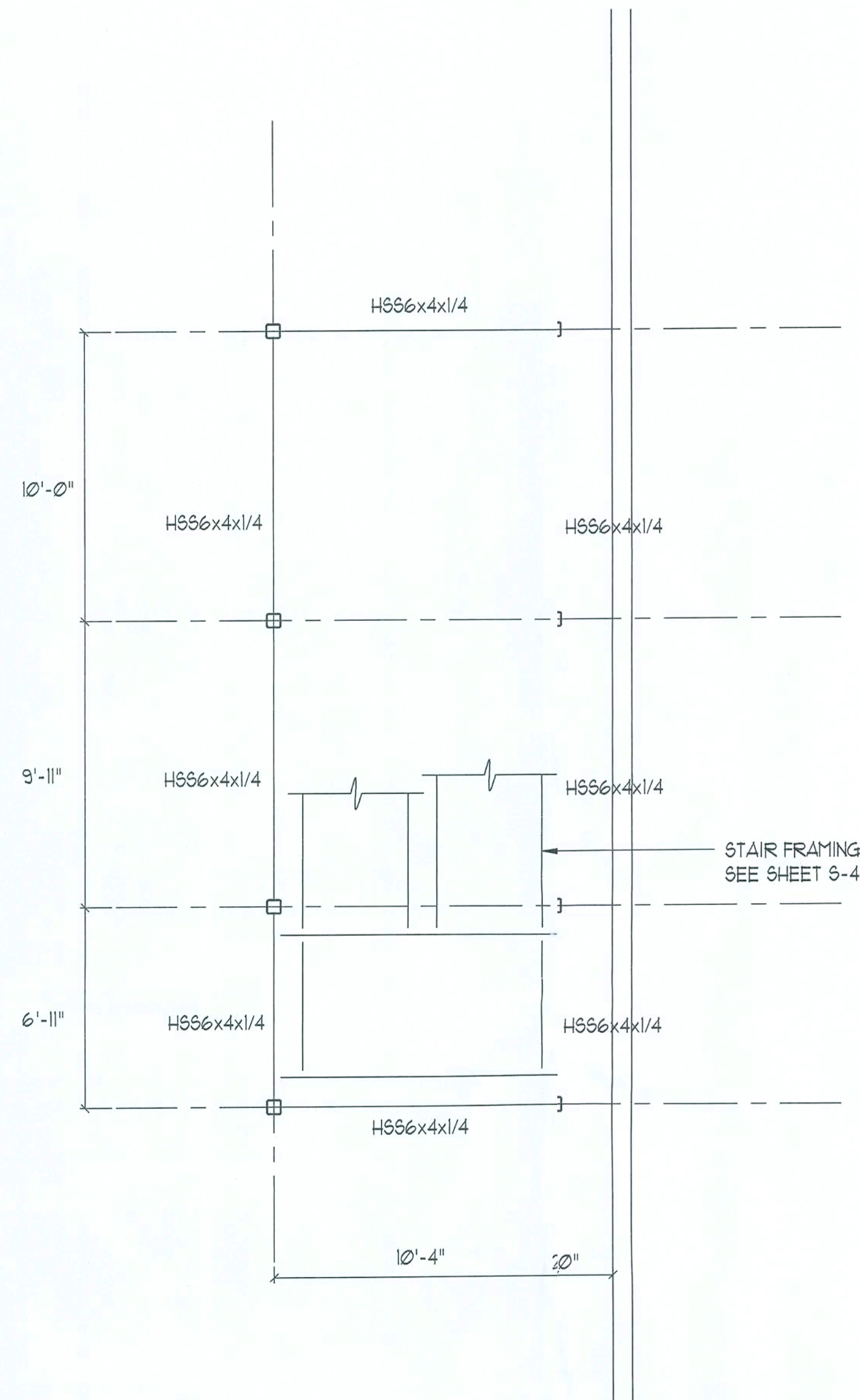


NICHOLAS PAUL GEISLER
ARCHITECT
N.C.A.M.E. CERTIFIED
1758 NW Brown Rd.
Lake City, FL 32055
385-385-3555

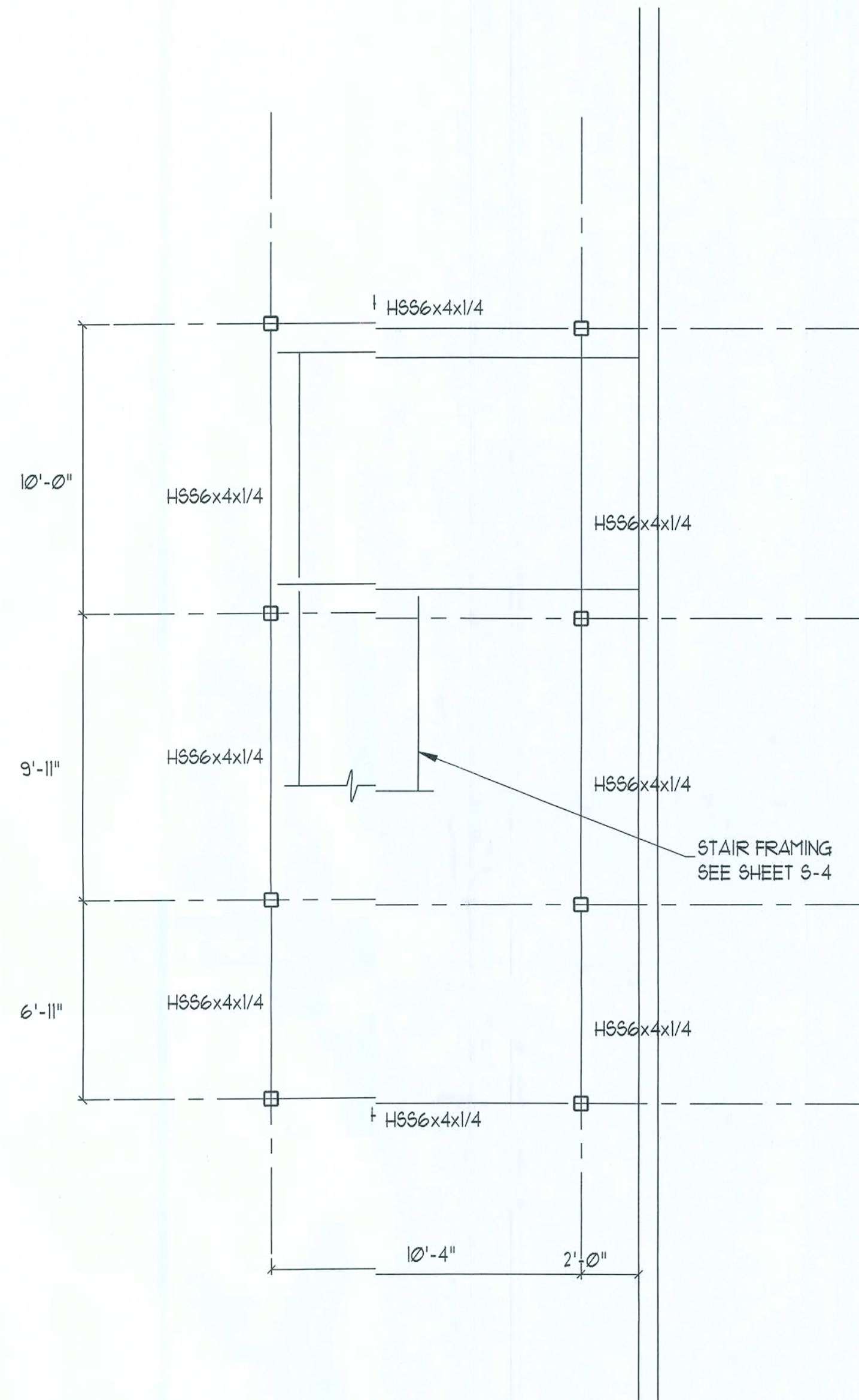
DATE:
30 APR 2021
COMM:
2K2115
SHEET:
S.1
1 OF 5

A30007005

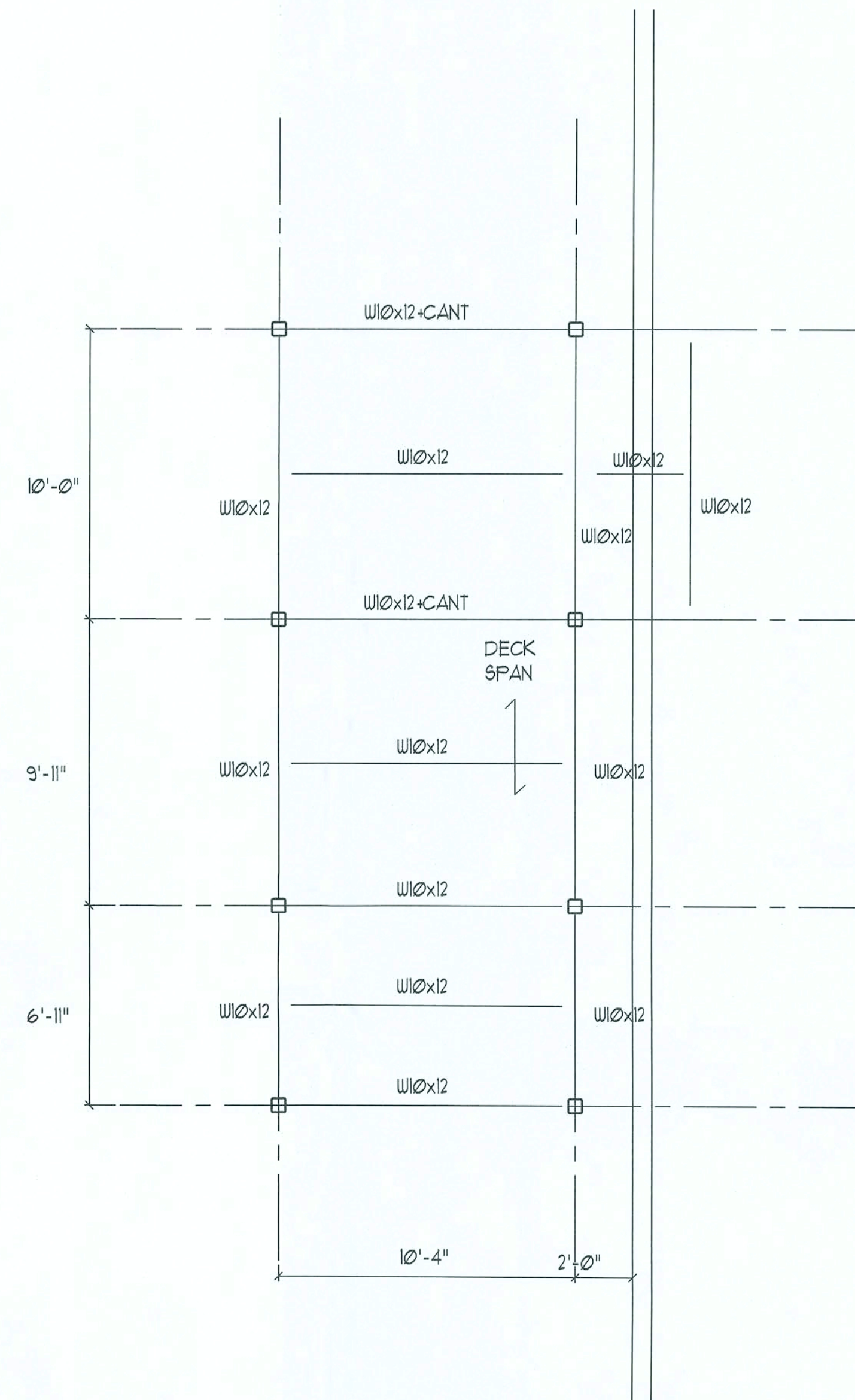
These drawings, as instruments of service, are the sole property of the architect, and may not be used, copied or reproduced in whole or in part, for use on or incorporated within any other job without specific and individual authorization by the architect.



1 MID-LANDING FRAMING PLAN
S-2
NOTES:
1) SEE FRAMING ELEVATIONS ON SHEET S-3 FOR TOP OF STEEL
1/4" = 1'-0"



2 2ND FLOOR LANDING FRAMING PLAN
S-2
NOTES:
1) SEE FRAMING ELEVATIONS ON SHEET S-3 FOR TOP OF STEEL
1/4" = 1'-0"



3 ROOF FRAMING PLAN
S-2
NOTES:
1) SEE FRAMING ELEVATIONS ON SHEET S-3 FOR TOP OF STEEL
2) ROOF DECK: 15B - 20 GAGE, G90 GALVANIZED FINISH. SEE GENERAL NOTES FOR ATTACHMENT TO STEEL SUPPORTS.
1/4" = 1'-0"

Digitally signed by N. P. GEISLER
DN: CN = N. P. GEISLER C = US
O = ARCHITECTS OUT
OU = BELMONT ACADEMY
Date: 2021.04.30 15:52:35 -0500

REVISION

Copyright, 2019
N. P. Geisler, Architect

DRWING
npg

NEW STAIR TOWER for:
BELMONT ACADEMY
COLUMBIA COUNTY, FLORIDA
DIMENSION PLANS

Celebrating
47 Years of Excellence

1972 - 2019
N.P. Geisler, Architect
ARCHITECT

43
NICHOLAS
PAUL
GEISLER
ARCHITECT
N. P. GEISLER, ARCHITECT

1758 NW Brown Rd.
Lake City, FL 32055
352-383-5355

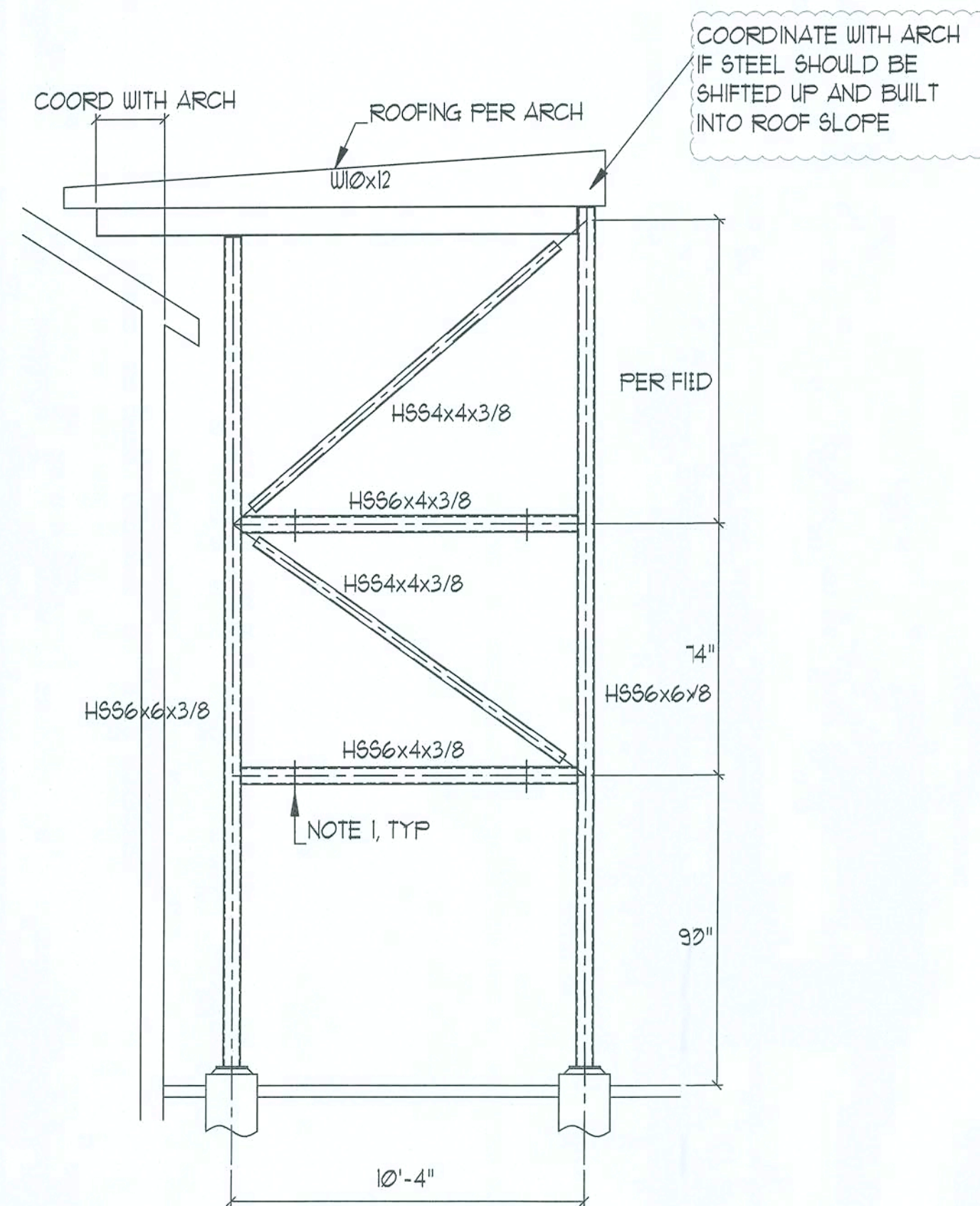
DATE:
30 APR 2021

COMB:
2K2115

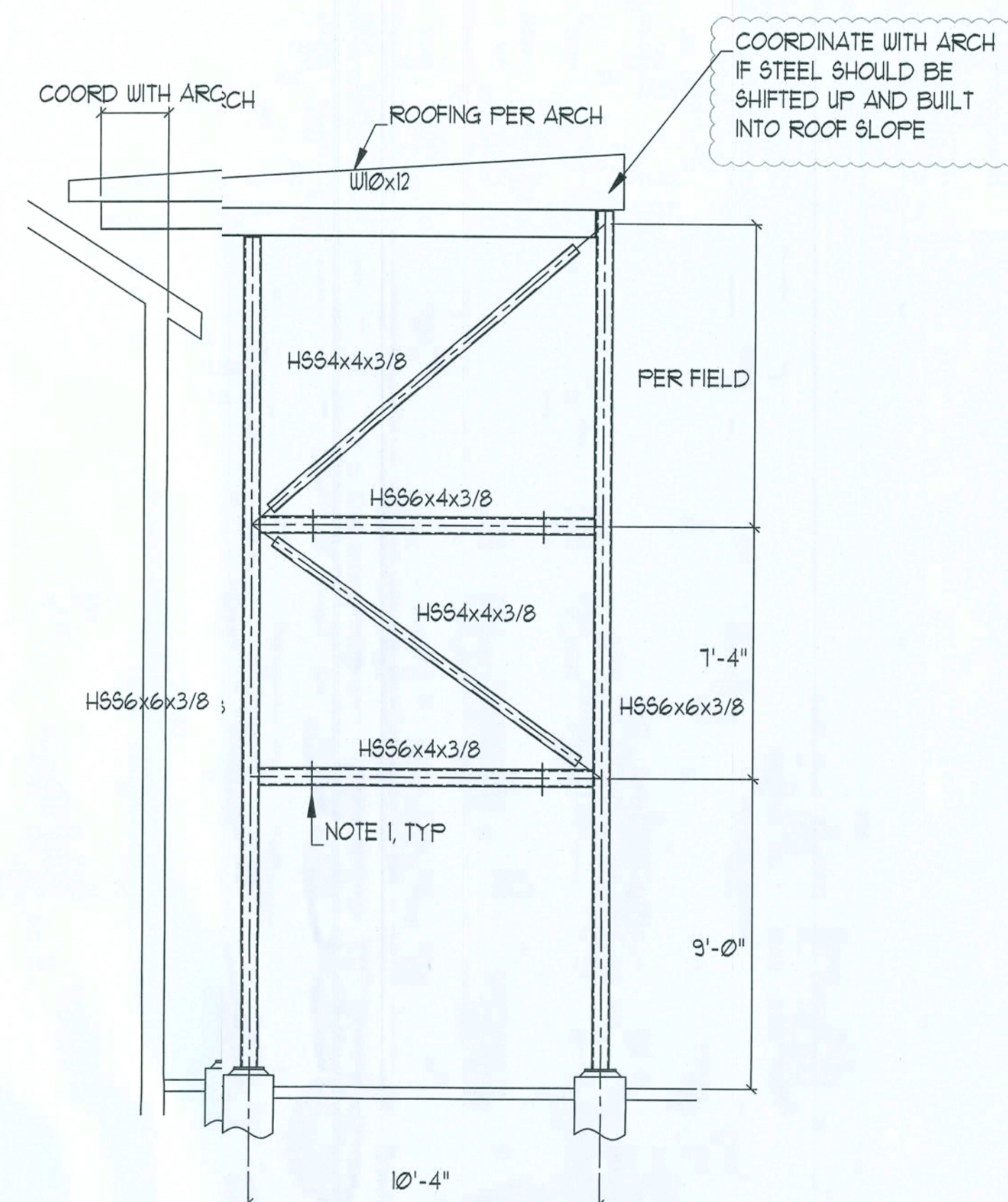
SHEET:
S.2
2 OF 5

ARK007005

These drawings, as instruments of service, are the sole property of the architect, and may not be used, copied or reproduced in whole or in part for use on or incorporated within any other job without specific and individual authorization by the architect.



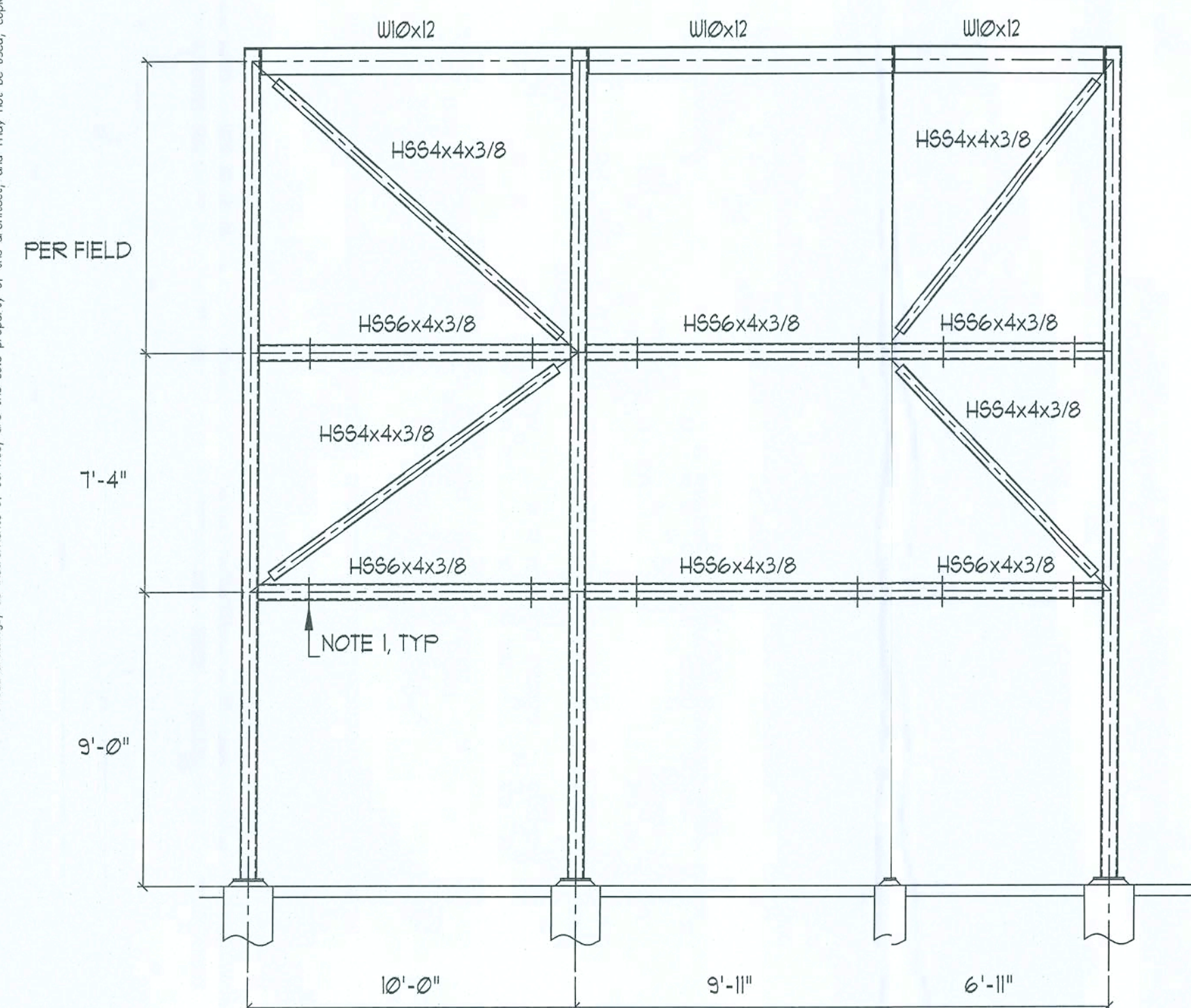
1 BRACED FRAME ELEVATION #1
ES-3 4" = 1'-0"



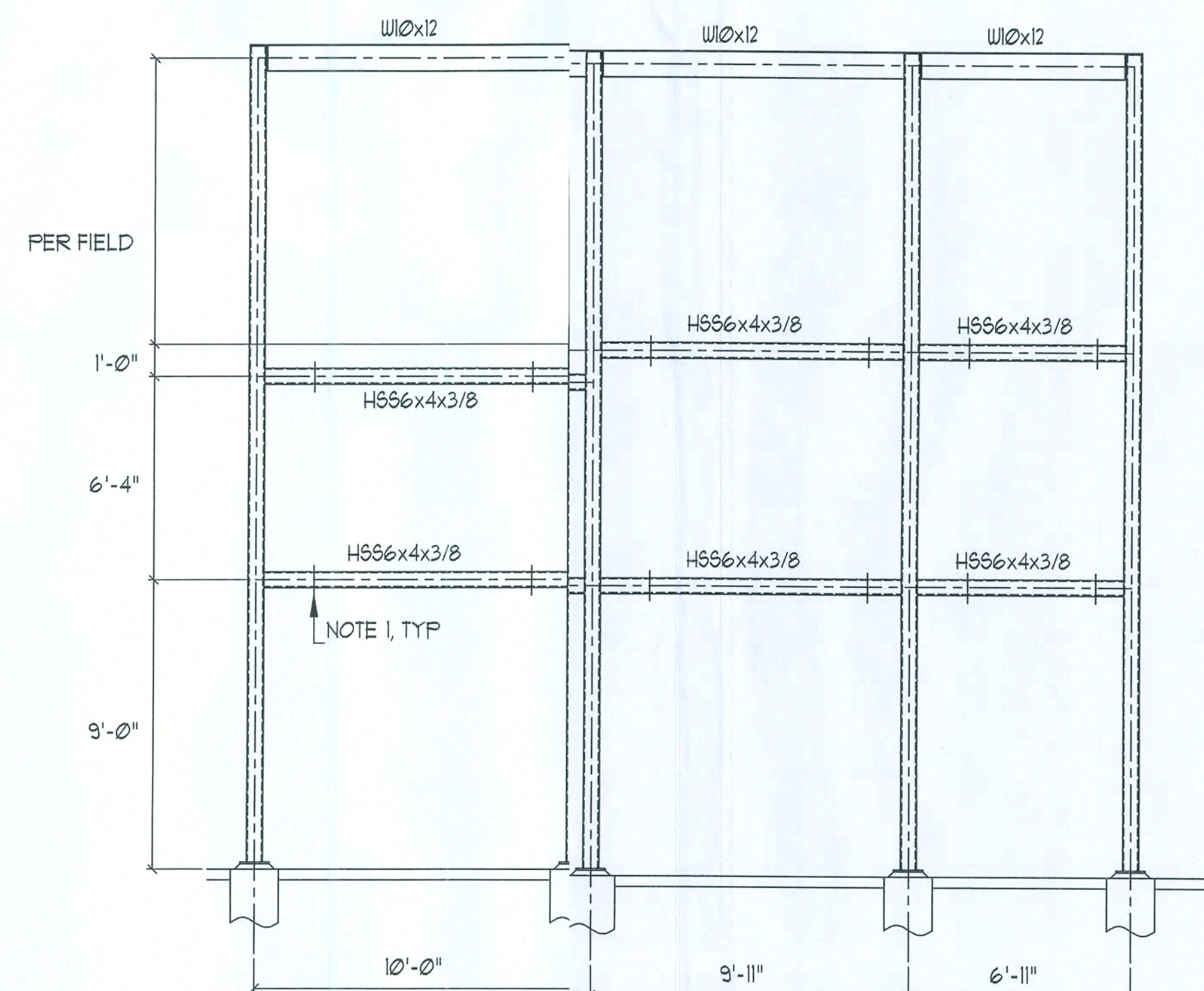
2 BRACED FRAME ELEVATION #2
ES-3 1/4" = 1'-0"



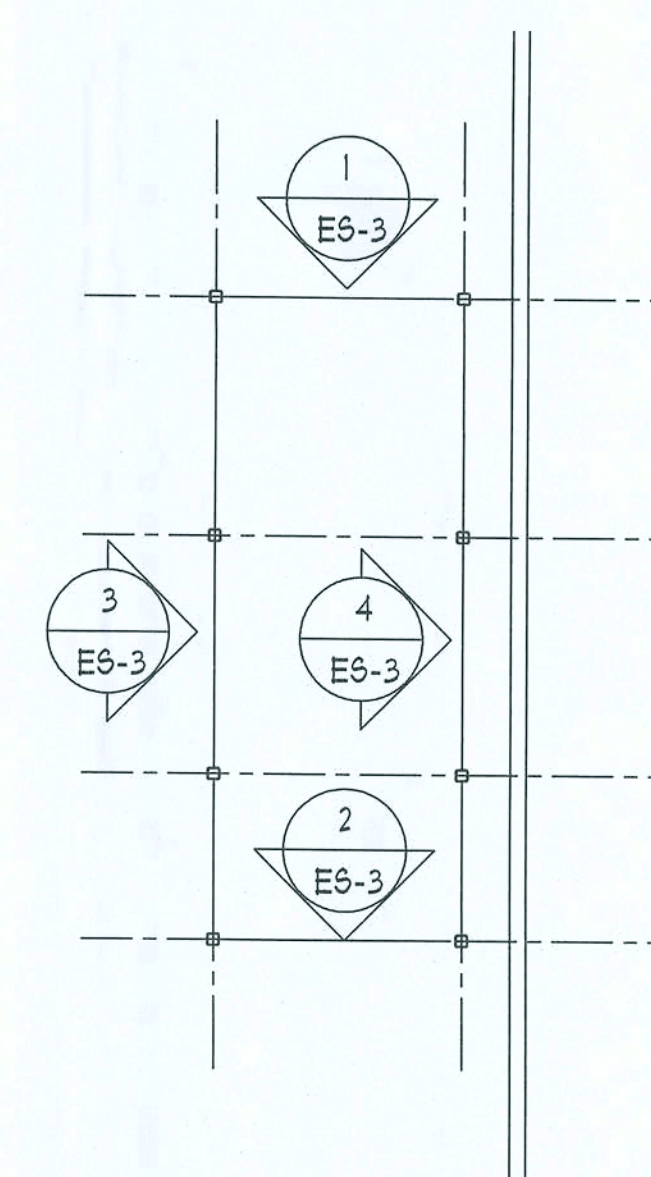
5 3D ISOMETRIC VIEW
ES-3 N.T.S.



3 BRACED FRAME ELEVATION #3
ES-3 1/4" = 1'-0"



4 BRACED FRAME ELEVATION #4
ES-3 1/4" = 1'-0"



6 BRACED FRAME ELEVATION KEY PLAN
ES-3

Digitally signed by: N. P. GEISLER
DN: CN = N. P. GEISLER C = US
O = AR0007005 OU =
ARCHITECT
Date: 2021.04.30 15:53:08 -05'00'

REVISIONS

Copyright 2019
N.P. Geisler, Architect

DRAWN
NPG

NEW STAIR TOWER FOR
BELMONT ACADEMY
COLUMBIA COUNTY, FLORIDA
STRUCTURAL ELEVATIONS

Calibrating
1755 NW Broward Rd.
1972-2019
N.P. Geisler, Architect
386-365-4355
AR0007005

GEISLER
NICHOLAS
GEISLER
ARCHITECT
N.C.A.R.B. Certified

DATE:

30 APR 2021

CONTRACT:

2K2115

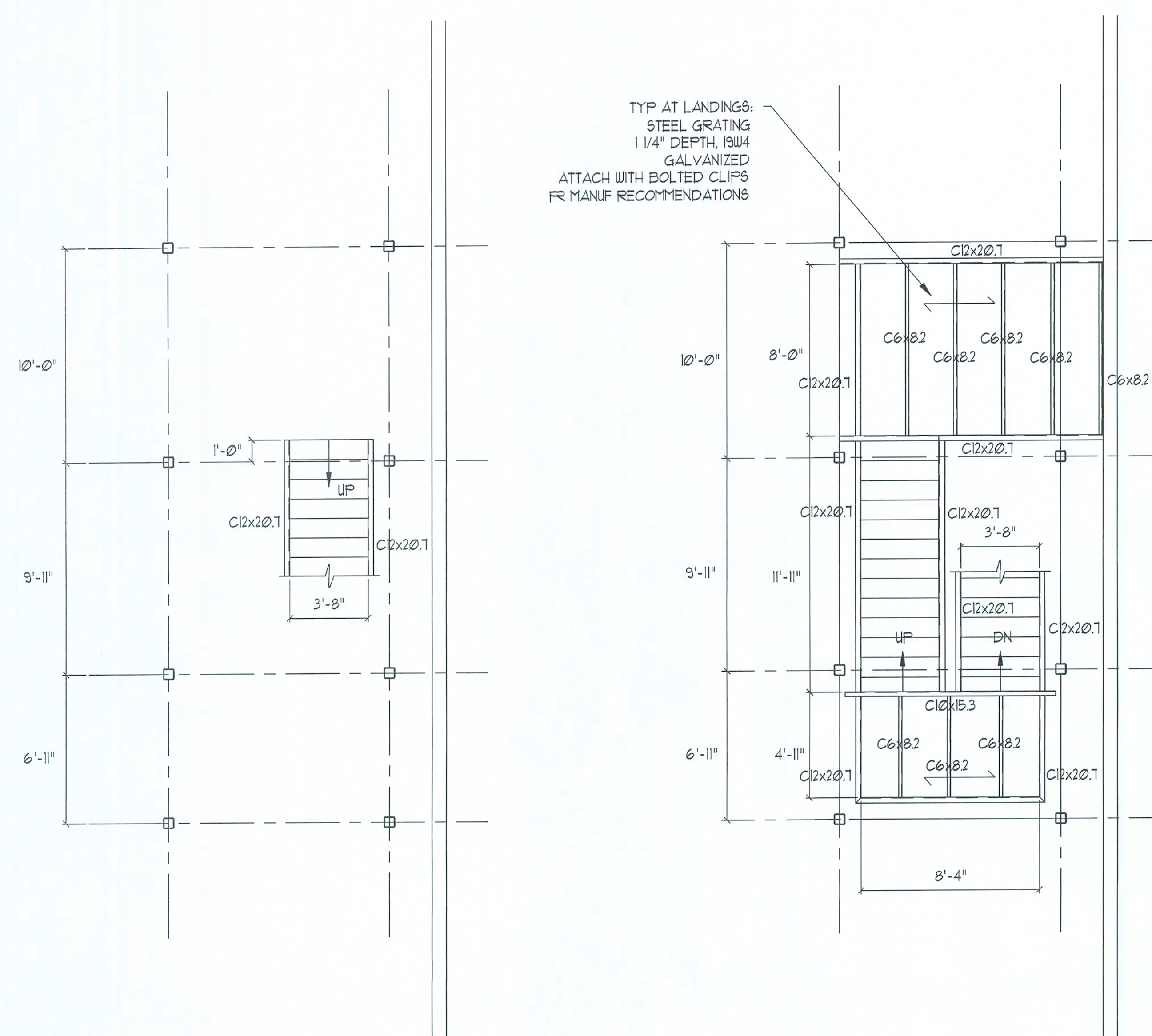
SHEET:

5.3

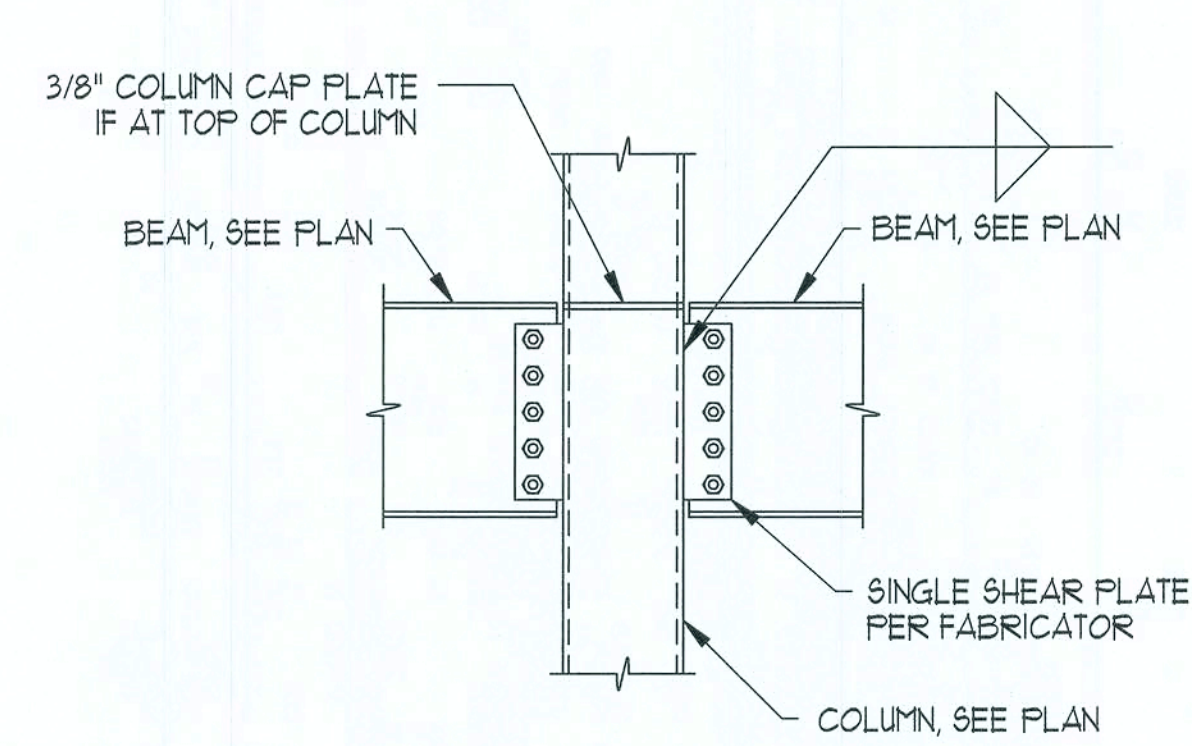
3 OF 5

AR0007005

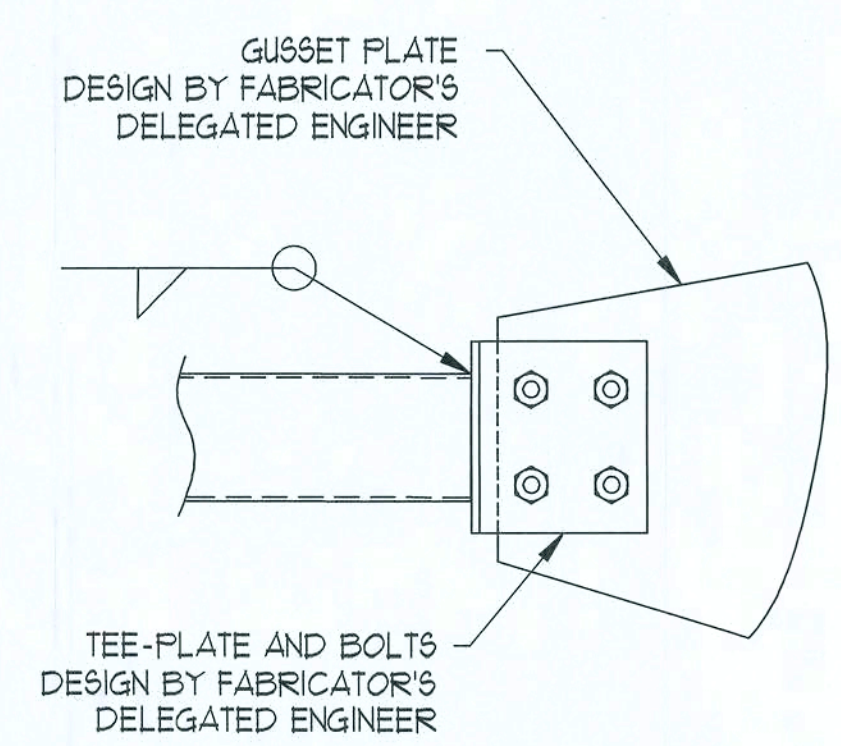
These drawings, as instruments of service, are the sole property of the architect, and may not be used, copied or reproduced in whole or in part for use on or incorporated within any other job without specific and individual authorization by the architect.



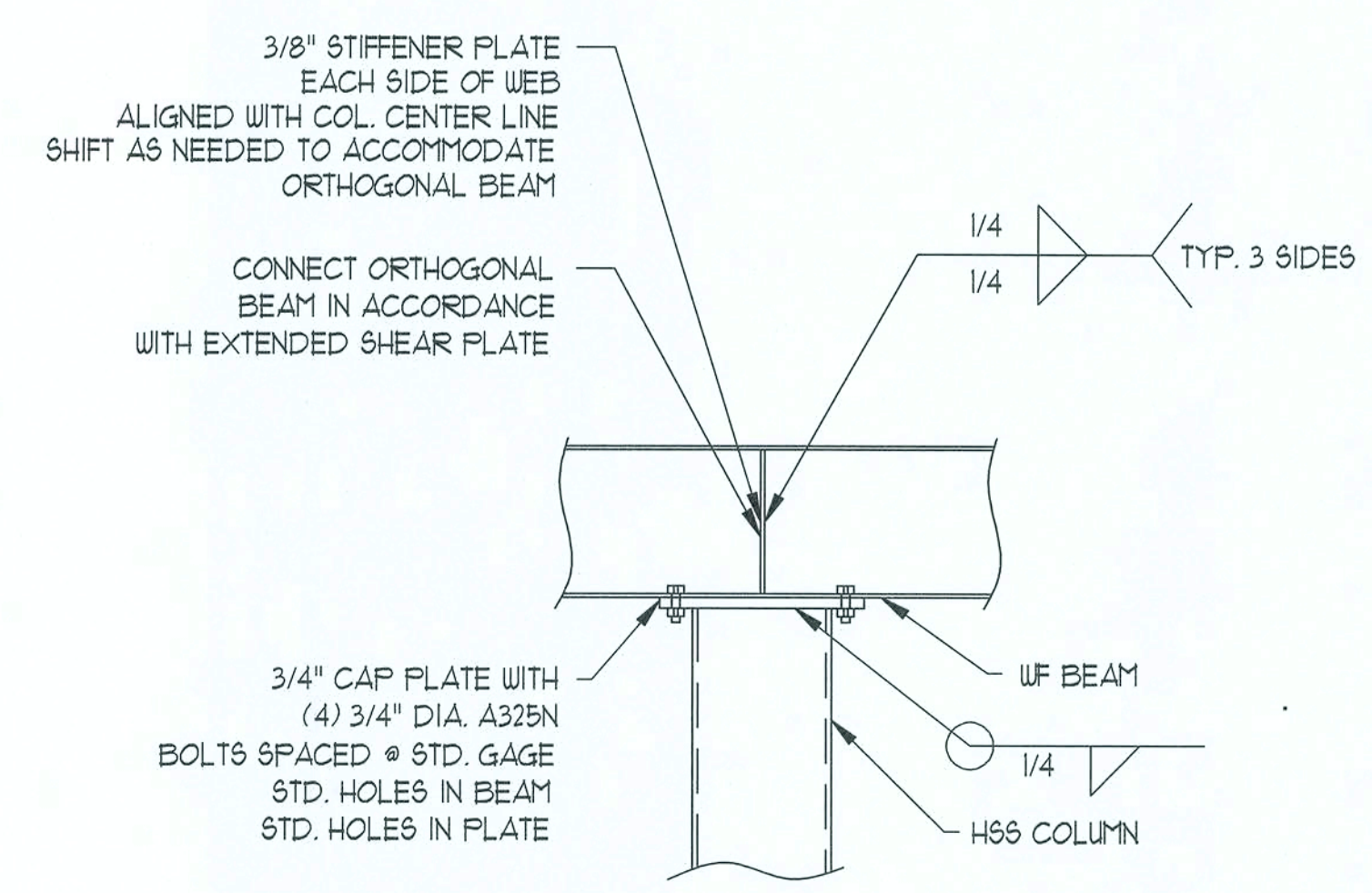
1 STAIR FRAMING PLANS AND DIMENSIONS
E5-2
1/4" = 1'-0"



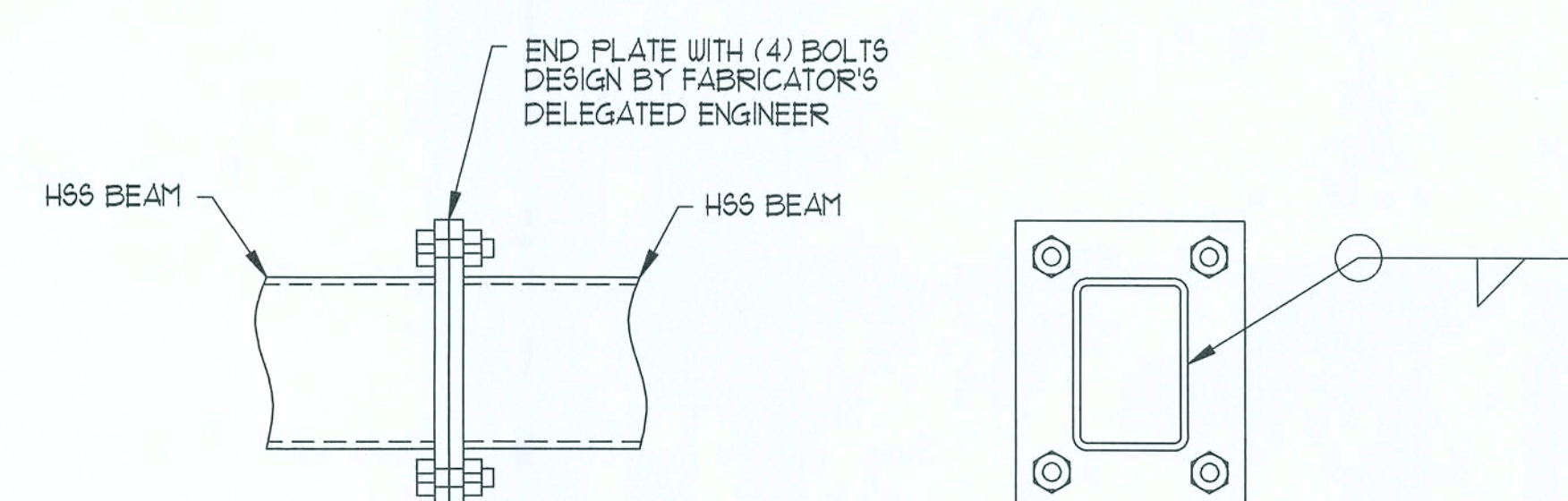
2 TYPICAL SHEAR CONNECTION AT HSS COLUMN
S-4
TYP. DETAIL



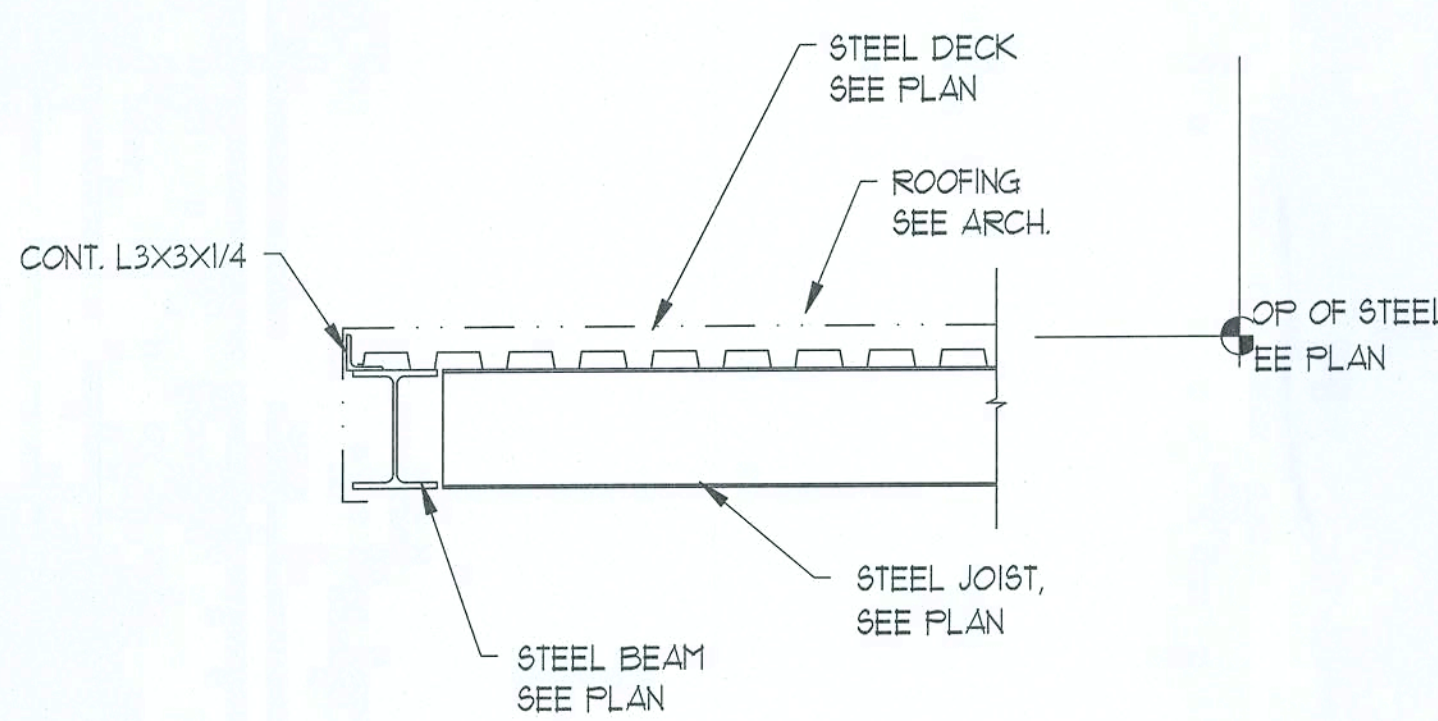
4 TYPICAL HSS BRACE CONNECTION
S-4
TYP. DETAIL



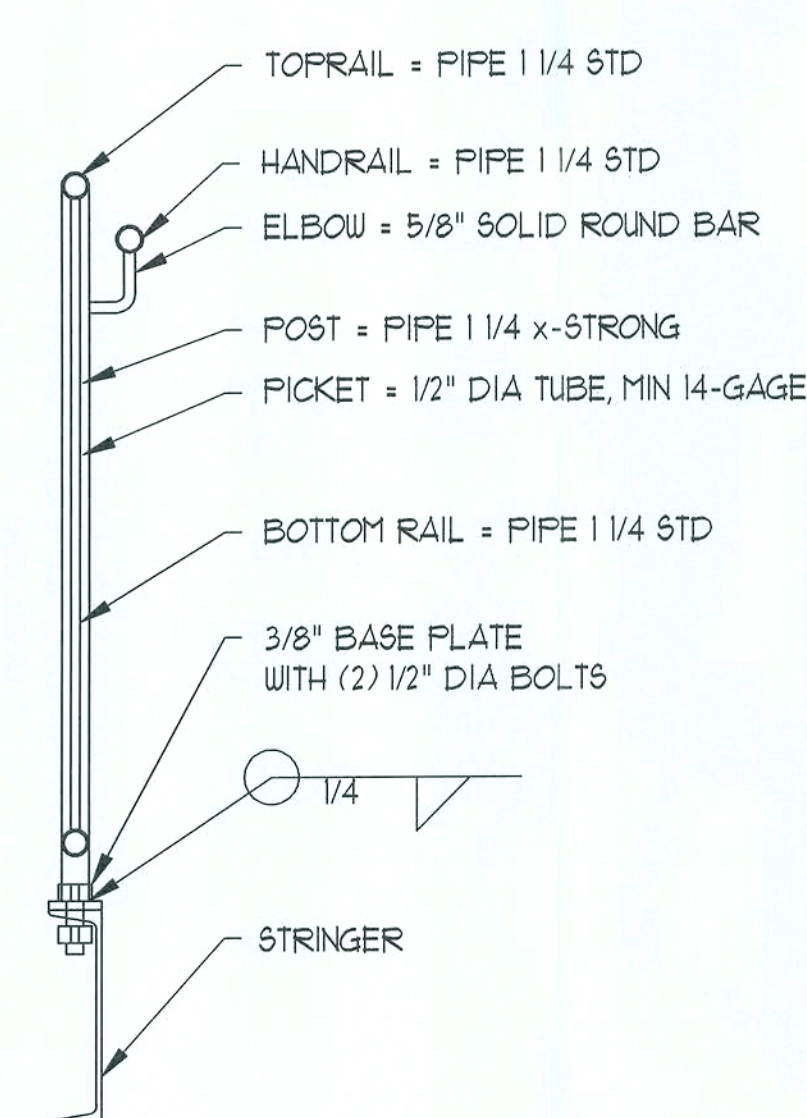
3 TYPICAL SHEAR CONNECTION AT HSS COLUMN
S-4
TYP. DETAIL



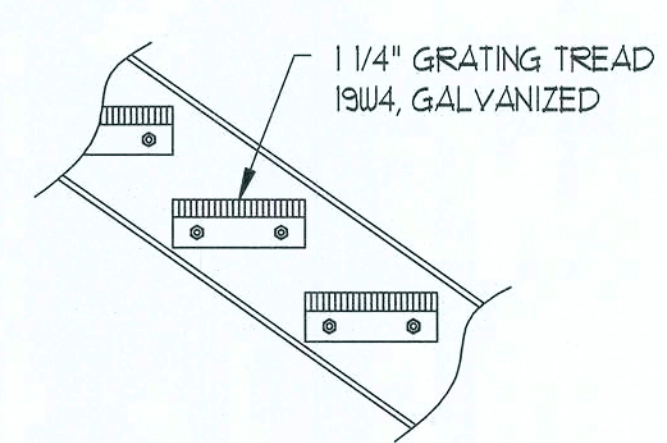
5 TYPICAL HSS BEAM SPLICE CONNECTION
S-4
TYP. DETAIL



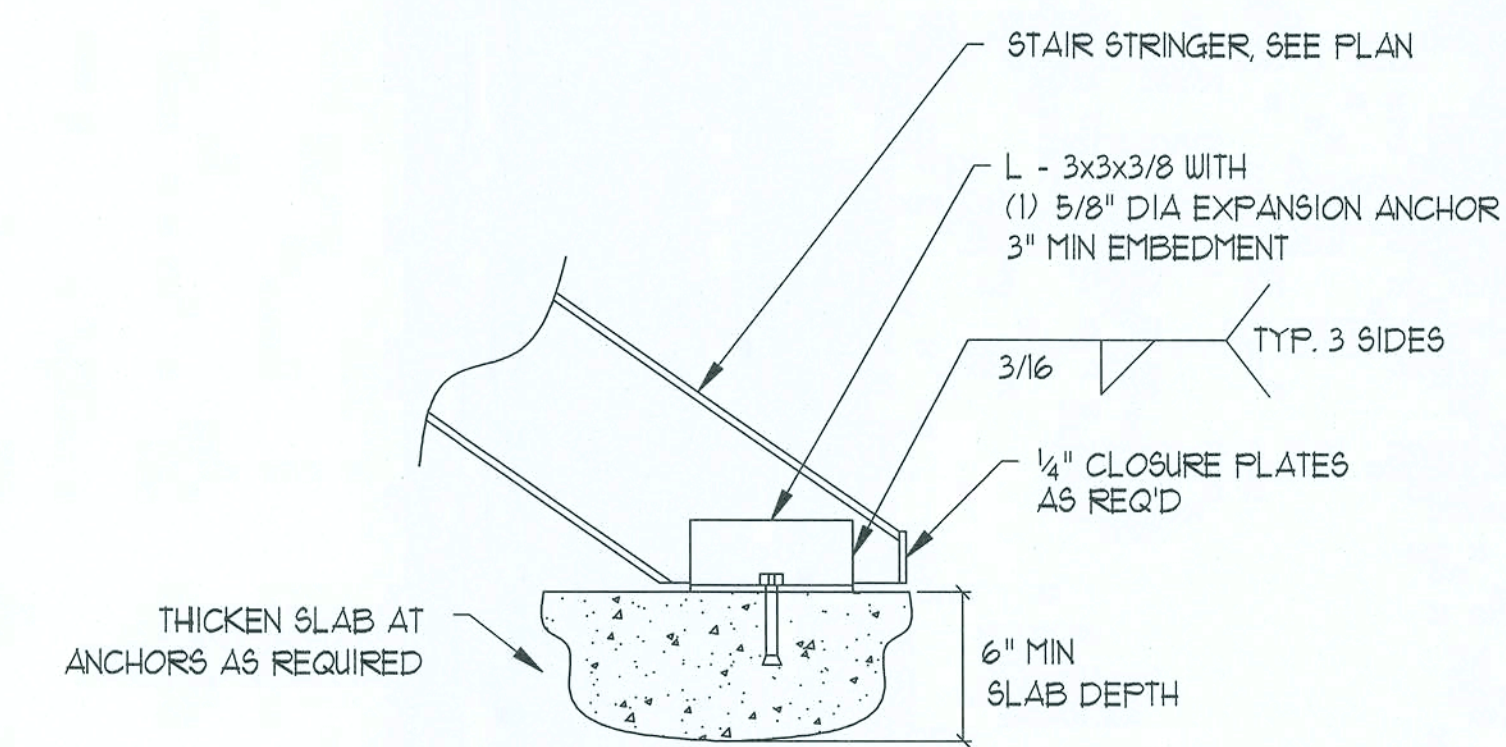
6 TYPICAL ROOF EDGE DETAIL
S-4
TYP. DETAIL



7 TYPICAL GUARDRAIL AND HANDRAIL FRAMING
S-4
TYP. DETAIL



8 TYPICAL STAIR TREAD DETAIL
S-4
TYP. DETAIL



9 TYPICAL STAIR STRINGER BASE DETAIL
S-4
TYP. DETAIL

REVISION:

Copyright 2019
N.P. Geisler, Architect

DRAWN
npg

NEW STAIR TOWER FOR:
BELMONT ACADEMY
COLUMBIA COUNTY, FLORIDA
STAIRS DETAILS

47 Years of Service
NICHOLAS
GEISLER
ARCHITECT
N.C.A.R.B. Certified
1972-2019
1758 NW Brown Rd.
386-565-4395

D/T/E:
30 APR 2021

C/M/B/E:
2K2115

SHEET:
S.4
4 OF 5

A0007005

