



Lumber design values are in accordance with ANSI/TPI 1 section 6.3
These truss designs rely on lumber values established by others.

RE: Gromko_Shop - Gromko Shop

MiTek USA, Inc.

6904 Parke East Blvd.
Tampa, FL 33610-4115

Site Information:

Customer Info: SCCI Project Name: . Model: .
Lot/Block: . Subdivision: .
Address: ., .
City: Lake City State: FL

Name Address and License # of Structural Engineer of Record, If there is one, for the building.

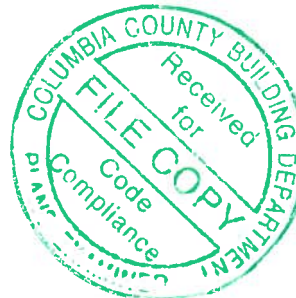
Name: License #:
Address:
City: State:

General Truss Engineering Criteria & Design Loads (Individual Truss Design Drawings Show Special Loading Conditions):

Design Code: FBC2017/TPI2014 Design Program: MiTek 20/20 8.2
Wind Code: ASCE 7-10 Wind Speed: 130 mph
Roof Load: 40.0 psf Floor Load: N/A psf

This package includes 3 individual, Truss Design Drawings and 0 Additional Drawings.
With my seal affixed to this sheet, I hereby certify that I am the Truss Design Engineer and this index sheet conforms to 61G15-31.003, section 5 of the Florida Board of Professional Engineers Rules.

No.	Seal#	Truss Name	Date
1	T18284902	A1	10/4/19
2	T18284903	A2GE	10/4/19
3	T18284904	A3GE	10/4/19

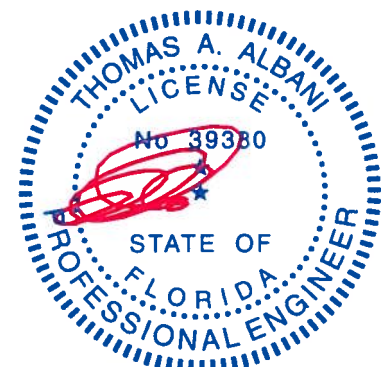


The truss drawing(s) referenced above have been prepared by MiTek USA, Inc. under my direct supervision based on the parameters provided by Mayo Truss Company, Inc..

Truss Design Engineer's Name: Albani, Thomas

My license renewal date for the state of Florida is February 28, 2021.

IMPORTANT NOTE: The seal on these truss component designs is a certification that the engineer named is licensed in the jurisdiction(s) identified and that the designs comply with ANSI/TPI 1. These designs are based upon parameters shown (e.g., loads, supports, dimensions, shapes and design codes), which were given to MiTek or TRENCO. Any project specific information included is for MiTek's or TRENCO's customers file reference purpose only, and was not taken into account in the preparation of these designs. MiTek or TRENCO has not independently verified the applicability of the design parameters or the designs for any particular building. Before use, the building designer should verify applicability of design parameters and properly incorporate these designs into the overall building design per ANSI/TPI 1, Chapter 2.



Thomas A. Albani PE No.39380
MiTek USA, Inc. FL Cert 6634
6904 Parke East Blvd. Tampa FL 33610
Date:

October 4, 2019

Job	Truss	Truss Type	Qty	Ply	Gromko Shop	TR8284902
Gromko_Shop	A1	COMMON	17	1		

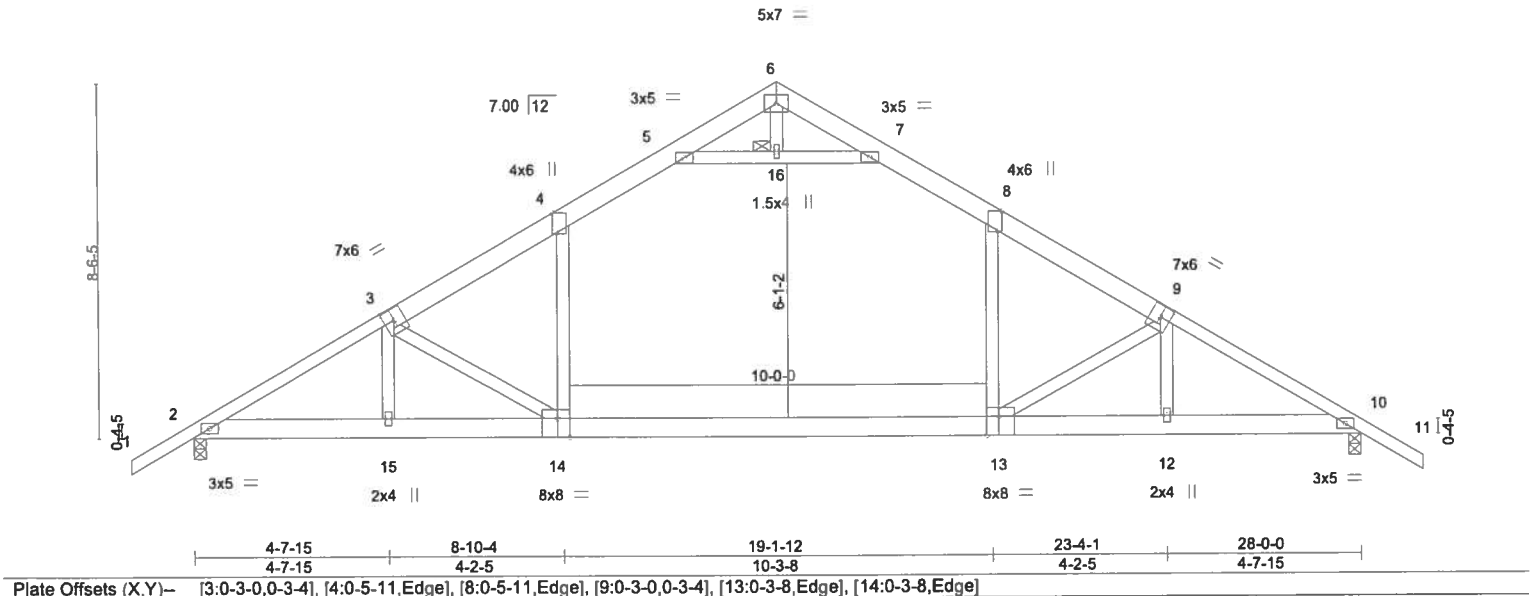
Mayo Truss Company, Inc., Mayo, FL - 32066,

8,240 s Jul 14 2019 MiTek Industries, Inc. Fri Oct 4 07:59:22 2019 Page 1

ID nN6fNGwdq0ewisjBThSNjayeLNg-yvtrAnTEO1?GFGMdZkTR52KT3gl?JBxmXaRUGyWs7J

-1-6-0	4-7-15	8-10-4	11-9-5	14-0-0	16-2-11	19-1-12	23-4-1	28-0-0	29-6-0
1-6-0	4-7-15	4-2-5	2-11-1	2-2-11	2-2-11	2-11-1	4-2-5	4-7-15	1-6-0

Scale = 1:55.6



LOADING (psf)	SPACING-	2-0-0	CSI.	DEFL.	in (loc)	I/defl	L/d	PLATES	GRIP
TCLL 20.0	Plate Grip DOL	1.25	TC 0.59	Vert(LL)	-0.38 13-14	>880	240	MT20	244/190
TCDL 10.0	Lumber DOL	1.25	BC 0.65	Vert(CT)	-0.63 13-14	>529	180		
BCLL 0.0 *	Rep Stress Incr	YES	WB 0.30	Horz(CT)	0.05 10	n/a	n/a		
BCDL 10.0	Code FBC2017/TPI2014		Matrix-AS	Attic	-0.24 13-14	534	360		
								Weight: 181 lb	FT = 0%

LUMBER-
TOP CHORD 2x6 SP SS *Except*
 1-3,9-11: 2x4 SP No.2
BOT CHORD 2x6 SP SS
WEBS 2x4 SP No.2

BRACING-
TOP CHORD Structural wood sheathing directly applied.
BOT CHORD Rigid ceiling directly applied.
JOINTS 1 Brace at Jt(s): 16

REACTIONS. (lb/size) 2=1365/0-3-8, 10=1365/0-3-8
 Max Horz 2=155(LC 11)
 Max Grav 2=1566(LC 18), 10=1566(LC 19)

FORCES. (lb) - Max. Comp./Max. Ten. - All forces 250 (lb) or less except when shown.
TOP CHORD 2-3=-2624/95, 3-4=-2420/50, 4-5=-1811/137, 5-6=0/568, 6-7=0/568, 7-8=-1812/137,
 8-9=-2421/50, 9-10=-2623/95
BOT CHORD 2-15=0/2358, 14-15=0/2361, 13-14=0/1954, 12-13=0/2243, 10-12=0/2241
WEBS 5-16=-2581/108, 7-16=-2581/108, 8-13=0/1004, 9-13=-575/154, 4-14=0/1004,
 3-14=-575/154

NOTES-

- Unbalanced roof live loads have been considered for this design.
- Wind: ASCE 7-10; Vult=130mph (3-second gust) Vasd=101mph; TCDL=6.0psf; BCDL=6.0psf; h=15ft; B=45ft; L=28ft; eave=4ft; Cat. II; Exp B; Encl., GCpi=0.18; MWFRS (directional) and C-C Exterior(2) zone; cantilever left and right exposed; end vertical left and right exposed; C-C for members and forces & MWFRS for reactions shown; Lumber DOL=1.60 plate grip DOL=1.60
- This truss has been designed for a 10.0 psf bottom chord live load nonconcurrent with any other live loads.
- * This truss has been designed for a live load of 20.0psf on the bottom chord in all areas where a rectangle 3-6-0 tall by 2-0-0 wide will fit between the bottom chord and any other members.
- Ceiling dead load (5.0 psf) on member(s). 4-5, 7-8, 5-16, 7-16; Wall dead load (5.0psf) on member(s).8-13, 4-14
- Bottom chord live load (40.0 psf) and additional bottom chord dead load (5.0 psf) applied only to room. 13-14
- This truss design requires that a minimum of 7/16" structural wood sheathing be applied directly to the top chord and 1/2" gypsum sheetrock be applied directly to the bottom chord.
- ATTIC SPACE SHOWN IS DESIGNED AS UNINHABITABLE.



Thomas A. Albani PE No.39380
 MiTek USA, Inc. FL Cert 6634
 6904 Parke East Blvd. Tampa FL 33610
 Date:

October 4,2019

WARNING - Verify design parameters and READ NOTES ON THIS AND INCLUDED MITEK REFERENCE PAGE MII-7473 rev. 10/03/2015 BEFORE USE

Design valid for use only with MiTek® connectors. This design is based only upon parameters shown, and is for an individual building component, not a truss system. Before use, the building designer must verify the applicability of design parameters and properly incorporate this design into the overall building design. Bracing indicated is to prevent buckling of individual truss web and/or chord members only. Additional temporary and permanent bracing is always required for stability and to prevent collapse with possible personal injury and property damage. For general guidance regarding the fabrication, storage, delivery, erection and bracing of trusses and truss systems, see ANSITPI1 Quality Criteria, DSB-89 and BCSI Building Component Safety Information available from Truss Plate Institute, 218 N. Lee Street, Suite 312, Alexandria, VA 22314.



6904 Parke East Blvd.
 Tampa, FL 36610

Job Gromko Shop	Truss A2GE	Truss Type GABLE	Qty 1	Ply 1	Gromko Shop	T18284903
--------------------	---------------	---------------------	----------	----------	-------------	-----------

Mayo Truss Company, Inc., Mayo, FL - 32066,

8,240 s Jul 14 2019 MiTek Industries, Inc. Fri Oct 4 07:59:24 2019 Page 1
ID:nN6fNGwdq0ewisjBThSNjayeLNg-vH7bbTVUweF_UaW7g9VvBTPwbSWuTfrEDr3XY9yWs7H

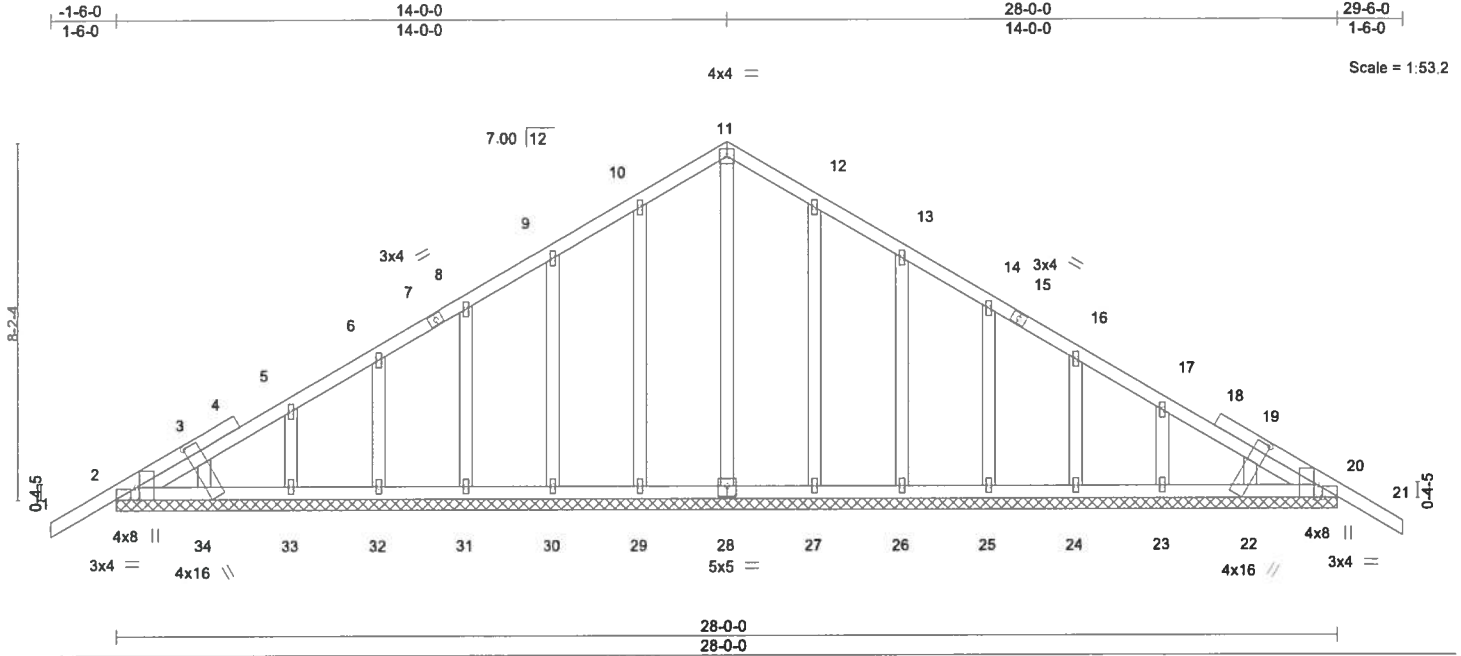


Plate Offsets (X,Y)- [2:0-3-8,Edge], [2:0-1-9,Edge], [3:0-0-0,0-2-0], [19:0-0-0,0-2-0], [20:0-1-9,Edge], [20:0-3-8,Edge], [22:0-0-14,0-1-8], [22:0-2-8,1-4-2], [28:0-2-8,0-3-0], [34:0-0-14,0-1-8], [34:0-2-8,1-4-2]

LOADING (psf)	SPACING-	2-0-0	CSI.	DEFL.	in	(loc)	l/defl	L/d	PLATES	GRIP
TCLL 20.0	Plate Grip DOL	1.25	TC 0.14	Vert(LL)	-0.01	21	n/r	120	MT20	244/190
TCDL 10.0	Lumber DOL	1.25	BC 0.03	Vert(CT)	-0.01	21	n/r	120		
BCLL 0.0 *	Rep Stress Incr	YES	WB 0.16	Horz(CT)	0.00	20	n/a	n/a		
BCDL 10.0	Code FBC2017/TPI2014		Matrix-S						Weight: 178 lb	FT = 0%

LUMBER-
TOP CHORD 2x4 SP No.2
BOT CHORD 2x4 SP No.2
OTHERS 2x4 SP No.2

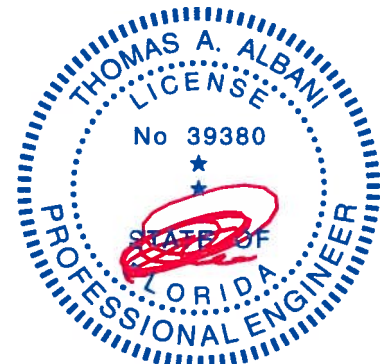
BRACING-
TOP CHORD Structural wood sheathing directly applied or 6'-0" oc purlins.
BOT CHORD Rigid ceiling directly applied or 10'-0" oc bracing.

REACTIONS. All bearings 28'-0".
(lb) - Max Horz 2=151(LC 10)
Max Uplift All uplift 100 lb or less at joint(s) 2, 20, 29, 30, 31, 32, 33, 27, 26, 25, 24, 23
Max Grav All reactions 250 lb or less at joint(s) 2, 20, 28, 29, 30, 31, 32, 33, 34, 27, 26, 25, 24, 23, 22

FORCES. (lb) - Max. Comp./Max. Ten. - All forces 250 (lb) or less except when shown.

NOTES-

- Unbalanced roof live loads have been considered for this design.
- Wind: ASCE 7-10; Vult=130mph (3-second gust) Vasd=101mph; TCDL=6.0psf; BCDL=6.0psf; h=15ft; B=45ft; L=28ft; eave=2ft; Cat. II; Exp B; Encl., GCpi=0.18; MWFRS (directional) and C-C Exterior(2) zone; cantilever left and right exposed; end vertical left and right exposed; C-C for members and forces & MWFRS for reactions shown; Lumber DOL=1.60 plate grip DOL=1.60
- Truss designed for wind loads in the plane of the truss only. For studs exposed to wind (normal to the face), see Standard Industry Gable End Details as applicable, or consult qualified building designer as per ANSI/TPI 1.
- All plates are 1.5x4 MT20 unless otherwise indicated.
- Gable requires continuous bottom chord bearing.
- Gable studs spaced at 2'-0" oc.
- This truss has been designed for a 10.0 psf bottom chord live load nonconcurrent with any other live loads.
- * This truss has been designed for a live load of 20.0psf on the bottom chord in all areas where a rectangle 3'-6" tall by 2'-0" wide will fit between the bottom chord and any other members.
- Provide mechanical connection (by others) of truss to bearing plate capable of withstanding 100 lb uplift at joint(s) 2, 20, 29, 30, 31, 32, 33, 27, 26, 25, 24, 23.



Thomas A. Albani PE No.39380
MiTek USA, Inc. FL Cert 6634
6904 Parke East Blvd. Tampa FL 33610
Date:

October 4,2019

WARNING - Verify design parameters and READ NOTES ON THIS AND INCLUDED MITTEK REFERENCE PAGE MII-7473 rev. 10/03/2015 BEFORE USE.

Design valid for use only with MiTek® connectors. This design is based only upon parameters shown, and is for an individual building component, not a truss system. Before use, the building designer must verify the applicability of design parameters and properly incorporate this design into the overall building design. Bracing indicated is to prevent buckling of individual truss web and/or chord members only. Additional temporary and permanent bracing is always required for stability and to prevent collapse with possible personal injury and property damage. For general guidance regarding the fabrication, storage, delivery, erection and bracing of trusses and truss systems, see **ANSI/TPI1 Quality Criteria, DSB-89 and BCSI Building Component Safety Information** available from Truss Plate Institute, 218 N. Lee Street, Suite 312, Alexandria, VA 22314.



6904 Parke East Blvd.
Tampa, FL 33610

Job	Truss	Truss Type	Qty	Ply	Gromko Shop	T18284904
Gromko_Shop	A3GE	COMMON	1	1	Job Reference (optional)	

Mayo Truss Company, Inc., Mayo, FL - 32066,

8.240 s Jul 14 2019 MiTek Industries, Inc. Fri Oct 4 07:59:25 2019 Page 1

ID:nN6fNGwdq0ewisjBThSNjayeLng-NUZzppW6hyNr6k5CEs08jgy4GsliCj2NSVp54byWs7G

1-6-0	4-7-15	8-10-4	12-4-4	14-0-0	15-7-12	19-1-12	23-4-1	28-0-0	29-6-0
1-6-0	4-7-15	4-2-5	3-6-0	1-7-12	1-7-12	3-6-0	4-2-5	4-7-15	1-6-0

Scale = 1:55.7

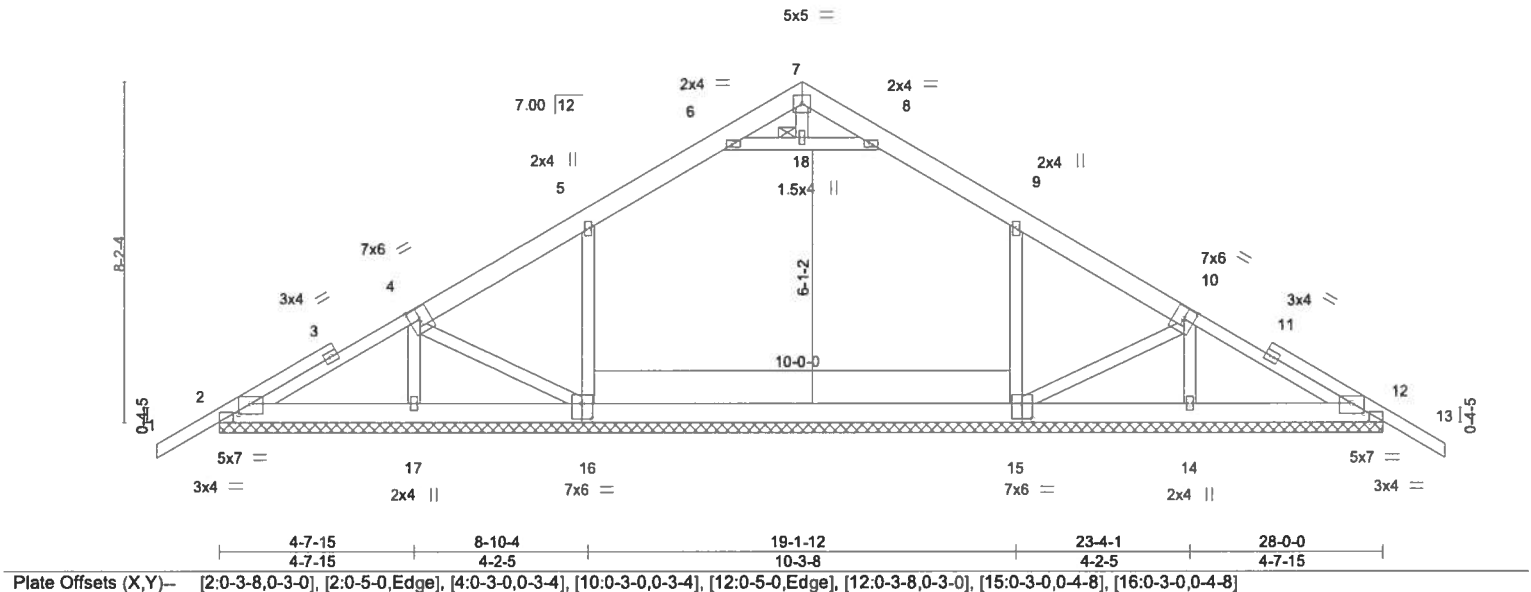


Plate Offsets (X,Y) -		[2:0-3-8,0-3-0], [2:0-5-0,Edge], [4:0-3-0,0-3-4], [10:0-3-0,0-3-4], [12:0-5-0,Edge], [12:0-3-8,0-3-0], [15:0-3-0,0-4-8], [16:0-3-0,0-4-8]	
LOADING (psf)	SPACING-	CSI.	DEFL.
TCLL 20.0	2-0-0	TC 0.21	in (loc) l/defl L/d
TCDL 10.0	Plate Grip DOL 1.25	BC 0.44	Vert(LL) 0.00 12 n/r 120
BCLL 0.0 *	Lumber DOL 1.25	WB 0.10	Vert(CT) 0.00 13 n/r 120
BCDL 10.0	Rep Stress Incr YES	Matrix-S	Horz(CT) 0.01 12 n/a n/a
	Code FBC2017/TPI2014		
		Weight: 183 lb FT = 0%	

LUMBER-
TOP CHORD 2x4 SP No.2 *Except*
4-7,7-10: 2x6 SP No.2
BOT CHORD 2x6 SP No.2
WEBS 2x4 SP No.2

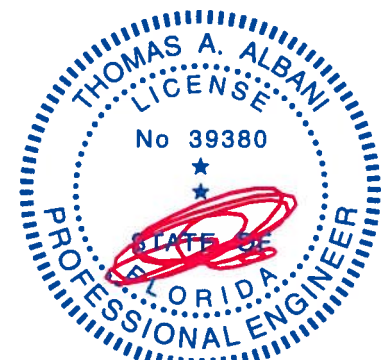
BRACING-
TOP CHORD Structural wood sheathing directly applied or 6-0-0 oc purlins.
BOT CHORD Rigid ceiling directly applied or 10-0-0 oc bracing.
JOINTS 1 Brace at Jt(s): 18

REACTIONS. All bearings 28-0-0.
(lb) - Max Horz 2=149(LC 11)
Max Uplift All uplift 100 lb or less at joint(s) 2, 12
Max Grav All reactions 250 lb or less at joint(s) except 2=324(LC 1), 16=576(LC 17), 15=587(LC 18), 14=545(LC 1), 17=545(LC 1), 12=324(LC 1)

FORCES. (lb) - Max. Comp./Max. Ten. - All forces 250 (lb) or less except when shown.
TOP CHORD 4-5=407/81, 5-6=415/170, 8-9=415/170, 9-10=407/80
BOT CHORD 15-16=0/307
WEBS 9-15=-280/142, 10-14=-479/118, 5-16=-280/143, 4-17=-479/112

NOTES-

- Unbalanced roof live loads have been considered for this design.
- Wind: ASCE 7-10; Vult=130mph (3-second gust) Vasd=101mph; TCDL=6.0psf; BCDL=6.0psf; h=15ft; B=45ft; L=28ft; eave=4ft; Cat. II; Exp B; Encl., GCpi=0.18; MWFRS (directional) and C-C Exterior(2) zone; cantilever left and right exposed; end vertical left and right exposed; C-C for members and forces & MWFRS for reactions shown; Lumber DOL=1.60 plate grip DOL=1.60
- Gable requires continuous bottom chord bearing.
- This truss has been designed for a 10.0 psf bottom chord live load nonconcurrent with any other live loads.
- * This truss has been designed for a live load of 20.0psf on the bottom chord in all areas where a rectangle 3-6-0 tall by 2-0-0 wide will fit between the bottom chord and any other members, with BCDL = 10.0psf.
- Provide mechanical connection (by others) of truss to bearing plate capable of withstanding 100 lb uplift at joint(s) 2, 12.



Thomas A. Albani PE No.39380
MiTek USA, Inc. FL Cert 6634
6904 Parke East Blvd. Tampa FL 33610
Date:

October 4,2019

WARNING - Verify design parameters and READ NOTES ON THIS AND INCLUDED MITTEK REFERENCE PAGE MII-7473 rev. 10/03/2015 BEFORE USE

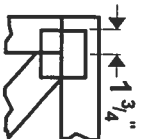
Design valid for use only with MiTek® connectors. This design is based only upon parameters shown, and is for an individual building component, not a truss system. Before use, the building designer must verify the applicability of design parameters and properly incorporate this design into the overall building design. Bracing indicated is to prevent buckling of individual truss web and/or chord members only. Additional temporary and permanent bracing is always required for stability and to prevent collapse with possible personal injury and property damage. For general guidance regarding the fabrication, storage, delivery, erection and bracing of trusses and truss systems, see **ANSI/TPI1 Quality Criteria, DSB-89 and BCSI Building Component Safety Information** available from Truss Plate Institute, 218 N. Lee Street, Suite 312, Alexandria, VA 22314.



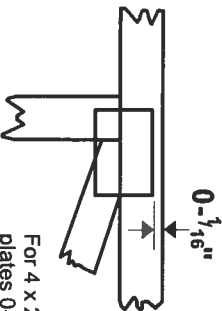
6904 Parke East Blvd.
Tampa, FL 33610

Symbols

PLATE LOCATION AND ORIENTATION



Center plate on joint unless x, y offsets are indicated. Dimensions are in ft-in-sixteenths. Apply plates to both sides of truss and fully embed teeth.



For 4 x 2 orientation, locate plates 0- 1/8" from outside edge of truss.

This symbol indicates the required direction of slots in connector plates.

* Plate location details available in MiTek 20/20 software or upon request.

PLATE SIZE

4 X 4

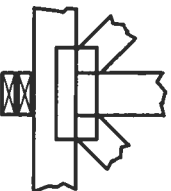
The first dimension is the plate width measured perpendicular to slots. Second dimension is the length parallel to slots.

LATERAL BRACING LOCATION



Indicated by symbol shown and/or by text in the bracing section of the output. Use T or I bracing if indicated.

BEARING



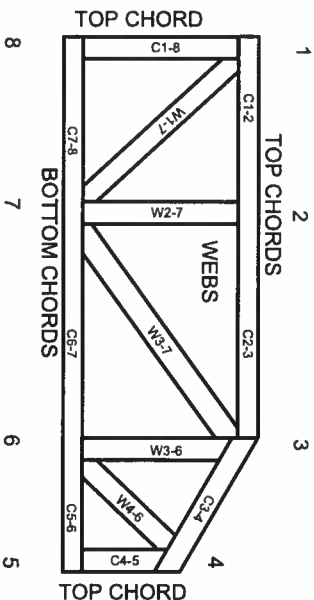
Indicates location where bearings (supports) occur. Icons vary but reaction section indicates joint number where bearings occur. Min size shown is for crushing only.

Industry Standards:

ANSI/TP11: National Design Specification for Metal Plate Connected Wood Truss Construction.
DSB-89: Design Standard for Bracing.
BCSI: Building Component Safety Information, Guide to Good Practice for Handling, Installing & Bracing of Metal Plate Connected Wood Trusses.

Numbering System

6-4-8 dimensions shown in ft-in-sixteenths (Drawings not to scale)



JOINTS ARE GENERALLY NUMBERED/LETTERED CLOCKWISE AROUND THE TRUSS STARTING AT THE JOINT FARTHEST TO THE LEFT.

CHORDS AND WEBS ARE IDENTIFIED BY END JOINT NUMBERS/LETTERS.

PRODUCT CODE APPROVALS

ICC-ES Reports:

ESR-1311, ESR-1352, ESR1988
ER-3907, ESR-2362, ESR-1397, ESR-3282

Trusses are designed for wind loads in the plane of the truss unless otherwise shown.

Lumber design values are in accordance with ANSI/TP1 1 section 6.3. These truss designs rely on lumber values established by others.

© 2012 MiTek® All Rights Reserved



MiTek Engineering Reference Sheet: MIL-7473 rev. 10/03/2015



General Safety Notes

Failure to Follow Could Cause Property Damage or Personal Injury

1. Additional stability bracing for truss system, e.g. diagonal or X-bracing, is always required. See BCSI.
2. Truss bracing must be designed by an engineer. For wide truss spacing, individual lateral braces themselves may require bracing, or alternative Tor I bracing should be considered.
3. Never exceed the design loading shown and never stack materials on inadequately braced trusses.
4. Provide copies of this truss design to the building designer, erection supervisor, property owner and all other interested parties.
5. Cut members to bear tightly against each other.
6. Place plates on each face of truss at each joint and embed fully. Knots and wane at joint locations are regulated by ANSI/TP1 1.
7. Design assumes trusses will be suitably protected from the environment in accord with ANSI/TP1 1.
8. Unless otherwise noted, moisture content of lumber shall not exceed 19% at time of fabrication.
9. Unless expressly noted, this design is not applicable for use with fire retardant, preservative treated, or green lumber.
10. Camber is a non-structural consideration and is the responsibility of truss fabricator. General practice is to camber for dead load deflection.
11. Plate type, size, orientation and location dimensions indicated are minimum plating requirements.
12. Lumber used shall be of the species and size, and in all respects, equal to or better than that specified.
13. Top chords must be sheathed or purlins provided at spacing indicated on design.
14. Bottom chords require lateral bracing at 10 ft. spacing, or less, if no ceiling is installed, unless otherwise noted.
15. Connections not shown are the responsibility of others.
16. Do not cut or alter truss member or plate without prior approval of an engineer.
17. Install and load vertically unless indicated otherwise.
18. Use of green or treated lumber may pose unacceptable environmental, health or performance risks. Consult with project engineer before use.
19. Review all portions of this design (front, back, words and pictures) before use. Reviewing pictures alone is not sufficient.
20. Design assumes manufacture in accordance with ANSI/TP1 1 Quality Criteria.

