

Mark Disosway, P.E.

163 SW Midtown Place, Suite 103 Lake City, FL 32025, Ph (386) 754-5419

2022-01-25

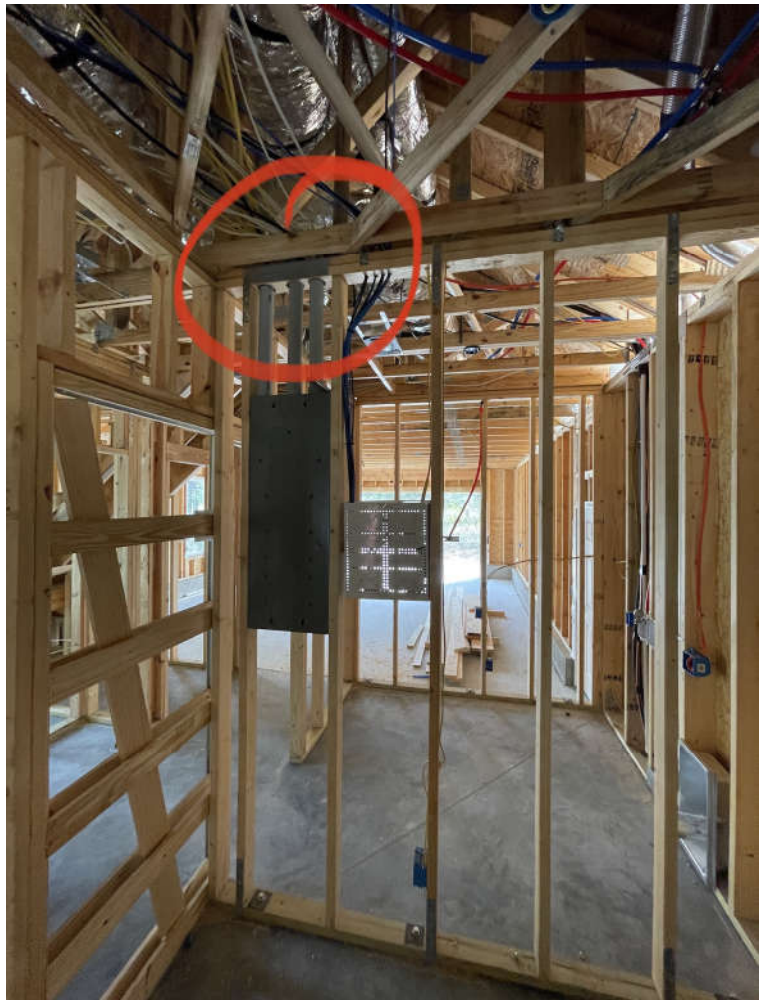
Columbia County Building Department

Re: Bryan Zecher Construction, Nottingham Res, Columbia County FL

To whom it may concern:

This letter is in reference to inspection issues on the above referenced project.

1. The sealed engineering call for an interior bearing wall between the utility & master closet. The builder drilled some large holes in the top plate for the electrical conduits. (see picture below).
 - a. This is ok since the wall designed to take only vertical uplift and bearing. No additional straps are required on the top plate.



THIS PDF HAS DIGITAL SIGNATURE
AND ELECTRONIC SEAL. PRINTED
COPIES ARE NOT CONSIDERED
SIGNED OR SEALED. YOU MUST
VERIFY SIGNATURE ON THIS PDF.
[CLICK HERE TO VERIFY.](#)



Mark Disosway, PE
Florida Professional Engineer #53915