

REVISIONS



ANCHOR TABLE

OBTAIN UPLIFT REQUIREMENTS FROM TRUSS MANUFACTURER'S ENGINEERING

UPLIFT LBS. SYP	UPLIFT LBS. SPF	TRUSS CONNECTOR*	TO PLATES	TO RAFTER/TRUSS	TO STUDS
< 420	< 245	H5A	3-8d	3-8d	
< 455	< 265	H5	4-8d	4-8d	
< 360	< 235	H4	4-8d	4-8d	
< 455	< 320	H3	4-8d	4-8d	
< 415	< 365	H2.5	5-8d	5-8d	
< 600	< 535	H2.5A	5-8d	5-8d	
< 950	< 820	H6	8-8d	8-8d	
< 745	< 565	H8	5-10d, 1 1/2"	5-10d, 1 1/2"	
< 1465	< 1050	H14-1	13-8d	12-8d, 1 1/2"	
< 1465	< 1050	H14-2	15-8d	12-8d, 1 1/2"	
< 990	< 850	H10-1	8-8d, 1 1/2"	8-8d, 1 1/2"	
< 780	< 655	H10-2	6-10d	6-10d	
< 1470	< 1265	H16-1	10-10d, 1 1/2"	2-10d, 1 1/2"	
< 1470	< 1265	H16-2	10-10d, 1 1/2"	2-10d, 1 1/2"	
< 1000	< 860	MTS24C	7-10d 1 1/2"	7-10d 1 1/2"	
< 1450	< 1245	HTS24	12-10d 1 1/2"	12-10d 1 1/2"	
< 2900	< 2490	2 - HTS24			
< 2050	< 1785	LG2	14 - 16d	14 - 16d	

UPLIFT LBS. SYP	UPLIFT LBS. SPF	TRUSS CONNECTOR*	TO PLATES	TO RAFTER/TRUSS	TO STUDS
< 3965	< 3330	MG1		22 - 10d	1-5/8" THREADED ROD 12" EMBEDMENT
< 10990	< 6485	HGT-2		16 - 10d	2-5/8" THREADED ROD 12" EMBEDMENT
< 10530	< 9035	HGT-3		16 - 10d	2-5/8" THREADED ROD 12" EMBEDMENT
< 9250	< 9250	HGT-4		16 - 10d	2-5/8" THREADED ROD 12" EMBEDMENT
< 435	< 435	SSP DOUBLE TOP PLATE	3 - 10d		4 - 10d
< 455	< 420	SSP SINGLE SILL PLATE	1 - 10d		4 - 10d
< 825	< 825	DSP DOUBLE TOP PLATE	6 - 10d		8 - 10d
< 825	< 600	DSP SINGLE SILL PLATE	2 - 10d		8 - 10d
< 885	< 760	SP4			6-10d, 1 1/2"
< 1240	< 1065	SP4H			10-10d, 1 1/2"
< 885	< 760	SP6			6-10d, 1 1/2"
< 1240	< 1065	SP6H			10-10d, 1 1/2"
< 1235	< 1165	LSTA18	14 - 10d		
< 1235	< 1235	LSTA21	16 - 10d		
< 1030	< 1030	CS20	18 - 8d		
< 1705	< 1705	CS16	28 - 8d		
< 1350	< 1305	LTT19	8 - 16d		1/2" AB
< 2310	< 2310	LTT31	18 - 10d, 1 1/2"		1/2" AB
< 2775	< 2570	HD2A	2-5/8" BOLTS		5/8" AB
< 4175	< 3695	HTT16	18 - 16d		5/8" AB
< 1400	< 1400	PAHD42	16 - 16d		
< 3335	< 3335	HPAHD22	16 - 16d		
< 2200	< 2200	ABU44	12 - 16d		1/2" AB
< 2300	< 2300	ABU66	12 - 16d		1/2" AB
< 2320	< 2320	ABU88	18 - 16d		2-5/8" AB

GENERAL NOTES:

TRUSSES: TRUSSES SHALL BE DESIGNED BY A FLORIDA LICENSED ENGINEER IN ACCORDANCE WITH THE FBCR 2004. TRUSS ENGINEERING SHALL INCLUDE TRUSS DESIGN, PLACEMENT PLANS, TEMPORARY AND PERMANENT BRACING DETAILS, TRUSS-TO-TRUSS CONNECTIONS, AND UPLIFT AND REACTION LOADS FOR ALL BEARING LOCATIONS. TRUSS ENGINEERING IS THE RESPONSIBILITY OF THE TRUSS MANUFACTURER AND SHALL BE SIGNED AND SEALED BY THE MANUFACTURER'S DESIGN ENGINEER. IT IS THE BUILDER'S RESPONSIBILITY TO VERIFY THE TRUSS DESIGNER FULLY SATISFIED ALL THE ABOVE REQUIREMENTS AND TO SELECT UPLIFT CONNECTIONS BASED ON TRUSS ENGINEERING UPLIFT AND PROVIDE FOOTINGS FOR INTERIOR BEARING WALLS. BUILDER IS TO FURNISH TRUSS ENGINEERING TO WIND LOAD ENGINEER FOR REVIEW OF TRUSS REACTIONS ON THE BUILDING STRUCTURE. STRAP 2x6 R rafters WITH MIN UPLIFT CONNECTION 415LB EACH END; 2x6 RAFTERS 700 LB EACH END.

SITE PREPARATION: SITE ANALYSIS AND PREPARATION IS NOT PART OF THIS PLAN

FOUNDATION: CONFIRM THAT THE FOUNDATION DESIGN & SITE CONDITIONS MEET GRAVITY LOAD REQUIREMENTS (ASSUME 1000 PSF BEARING CAPACITY UNLESS VISUAL OBSERVATION OR SOILS TEST PROVES OTHERWISE

CONCRETE: MINIMUM COMPRESSIVE STRENGTH OF CONCRETE AT 28 DAYS, $f_c = 3000$ PSI.

WELDED WIRE REINFORCED SLAB: 8" x 6" W1.4 x W1.4, FB = 85KSI, WELDED WIRE REINFORCEMENT FABRIC (W.W.M.) CONFORMING TO ASTM A185, LOCATED IN MIDDLE OF THE SLAB, SUPPORTED WITH APPROVED MATERIALS OR SUPPORTS AT SPACINGS NOT TO EXCEED 3'.

FIBER CONCRETE SLAB: CONCRETE SLABS ON GROUND CONTAINING SYNTHETIC FIBER REINFORCEMENT. FIBER LENGTH 1/2 INCH TO 2 INCHES. DOSAGE AMOUNTS FROM 0.75 TO 1.5 POUNDS PER CUBIC YARD PER THE MANUFACTURER'S RECOMMENDATIONS. FIBERS TO COMPLY WITH ASTM C 1116. SUPPLIER TO PROVIDE ASTM C 1116 CERTIFICATION OF COMPLIANCE WHEN REQUESTED BY BUILDING OFFICIAL.

CONTROL JOINTS: WHERE SPECIFIED, SAWN CONTROL JOINTS IN SLAB-ON-GRADE SHALL BE CUT IN ACCORDANCE WITH ACI 302. JOINTS SHALL BE CUT WITHIN 12 HOURS OF SLAB PLACEMENT. THE LENGTH / WIDTH RATIOS OF SLAB AREAS SHALL NOT EXCEED 1.5 AND TYPICAL SPACING OF CUTS TO BE 12 FT. DO NOT CUT WMM OR REINFORCING STEEL. (RECOMMENDED LOCATION OF CONTROL JOINTS IS SUBJECT TO OWNER AND CONTRACTOR'S APPROVAL. THE CONTROL JOINTS ARE NOT INTENDED TO PREVENT CRACKS BUT RATHER TO ENCOURAGE THE SLAB TO CRACK ON A GIVEN LINE.)

REBAR: ASTM A 615, GRADE 60, DEFORMED BARS, $F_y = 60$ KSI, ALL LAP SPICES 40" DB (25" FOR #5 BARS); UNO, ALL REINFORCEMENT SHALL BE DETAILED AND PLACED IN ACCORDANCE WITH ACI 315-86, U.N.O.

GLULAM BEAMS: GLULAM BEAM, GLB, 24F-V3SP, $F_b = 2.4$ ksi, $E = 1800$ ksi, UNO. SUPPLIER MAY SUPPLY AN ALTERNATE BEAM WITH EQUAL PROPERTIES OR MAY SUBMIT THEIR OWN SIZING CALCULATIONS.

ROOF SHEATHING: ALL ROOFS ARE HORIZONTAL DIAPHRAGMS; 7/16" OSB SHEATHING, UNBLOCKED, APPLIED PERPENDICULAR TO FRAMING, OVER A MINIMUM OF 3 FRAMING MEMBERS, WITH PANEL EDGES STAGGERED, FASTENED WITH 8d COMMON NAILS (131), 6" OC PANEL EDGES, 12" OC INTERMEDIATE MEMBERS, GABLE ENDS AND DIAPHRAGM BOUNDARY, 4" OC, UNO.

STRUCTURAL CONNECTORS: MANUFACTURERS AND PRODUCT NUMBER FOR CONNECTORS, ANCHORS, AND REINFORCEMENT ARE LISTED FOR EXAMPLE NOT ENDORSEMENT. AN EQUIVALENT DEVICE OF THE SAME OR OTHER MANUFACTURER CAN BE SUBSTITUTED FOR ANY DEVICES LISTED IN THE EXAMPLE TABLES AS LONG AS IT MEETS THE REQUIRED LOAD CAPACITIES. MANUFACTURER'S INSTALLATION INSTRUCTIONS MUST BE FOLLOWED TO ACHIEVE RATED LOADS.

ANCHOR BOLTS: A-307 ANCHOR BOLTS WITH MINIMUM EMBEDMENT AS SPECIFIED IN DRAWINGS BUT NO LESS THAN 7" IN CONCRETE OR REINFORCED BOND BEAM OR 15" IN GROUTED CMU.

WASHERS: WASHERS USED WITH 1/2" BOLTS TO BE 2" x 2" x 9/64"; WITH 5/8" BOLTS TO BE 3" x 3" x 9/64"; WITH 3/4" BOLTS TO BE 3" x 3" x 9/64"; WITH 7/8" BOLTS TO BE 3" x 3" x 5/16"; UNO.

NAILS: ALL NAILS ARE COMMON NAILS UNLESS OTHERWISE SPECIFIED OR ACCEPTED BY FBC TEST REPORTS AS HAVING EQUAL STRUCTURAL VALUES.

BUILDER'S RESPONSIBILITY

THE BUILDER AND OWNER ARE RESPONSIBLE FOR THE FOLLOWING, WHICH ARE SPECIFICALLY NOT PART OF THE WIND LOAD ENGINEER'S SCOPE OF WORK.

CONFIRM SITE CONDITIONS, FOUNDATION BEARING CAPACITY, GRADE AND BACKFILL HEIGHT, WIND SPEED AND DEBRIS ZONE, AND FLOOD ZONE.

PROVIDE MATERIALS AND CONSTRUCTION TECHNIQUES, WHICH COMPLY WITH FBCR 2004 REQUIREMENTS FOR THE STATED WIND VELOCITY AND DESIGN PRESSURES.

PROVIDE A CONTINUOUS LOAD PATH FROM TRUSSES TO FOUNDATION. IF YOU BELIEVE THE PLAN OMMITS A CONTINUOUS LOAD PATH CONNECTION, CALL THE WIND LOAD ENGINEER IMMEDIATELY.

VERIFY THE TRUSS MANUFACTURER'S SEALED ENGINEERING INCLUDES TRUSS DESIGN, PLACEMENT PLANS, TEMPORARY AND PERMANENT BRACING DETAILS, TRUSS-TO-TRUSS CONNECTIONS, AND UPLIFT AND REACTION LOADS FOR ALL BEARING LOCATIONS.

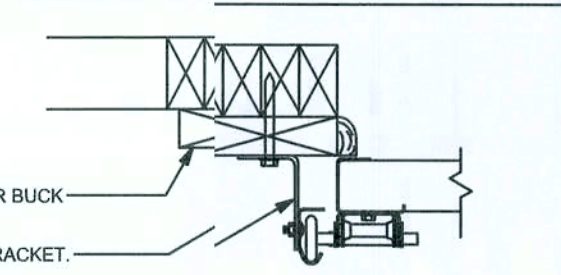
ROOF SYSTEM DESIGN

THE SEAL ON THESE PLANS FOR COMPLIANCE WITH FBCR 2004, SECTION R301.2.1 IS BASED ON REACTIONS, UPLIFTS, AND BEARING LOCATIONS IN TRUSS ENGINEERING SUBMITTED TO THE WIND LOAD ENGINEER. IT IS THE RESPONSIBILITY OF THE BUILDER TO CHECK ALL DETAILS OF THE COMPLETE ROOF SYSTEM DESIGN SUBMITTED BY THE TRUSS MANUFACTURER AND HAVE IT SIGNED, AND SEALED BY A DESIGN PROFESSIONAL FOR CORRECT APPLICATION OF FBCR 2004 REQUIRED LOADS AND ANY SPECIAL LOADS. THE BUILDER IS RESPONSIBLE TO REVIEW EACH INDIVIDUAL TRUSS MEMBER AND THE TRUSS ROOF SYSTEM AS A WHOLE AND TO PROVIDE RESTRAINT FOR ANY LATERAL BRACING. THE BUILDER SHOULD USE CARE CHECKING THE ROOF DESIGN BECAUSE THE WIND LOAD ENGINEER IS SPECIFICALLY NOT RESPONSIBLE FOR THE TRUSS LAYOUT WHICH WAS CREATED BY THE TRUSS MANUFACTURER AND THE TRUSS DESIGNER ALSO DENIES RESPONSIBILITY FOR THE LAYOUT PER NOTES ON THEIR SEALED TRUSS SHEETS.

2x6 SYP #2 GARAGE DOOR BUCK ATTACHMENT

ATTACH GARAGE DOOR BUCK TO STUD PACK AT EACH SIDE OF DOOR OPENING WITH 3/8" x 4" LAG SCREWS w/ 1" WASHERS. LAG SCREWS MAY BE TRANSFER LOAD. CENTER LAG SCREWS DO NOT STAGGER 16d NAILS (2) ROWS OF .131 x 3 1/4" ON PER TABLE BELOW.

DOOR WIDTH	3/8" x 4" LAG	16d STAGGER	(2) ROWS OF .131 x 3 1/4" GN
8' - 10'	2 1/4" O.C.	5" O.C.	5" O.C.
11' - 15'	1 1/2" O.C.	4" O.C.	4" O.C.
16' - 18'	1 1/2" O.C.	3" O.C.	3" O.C.

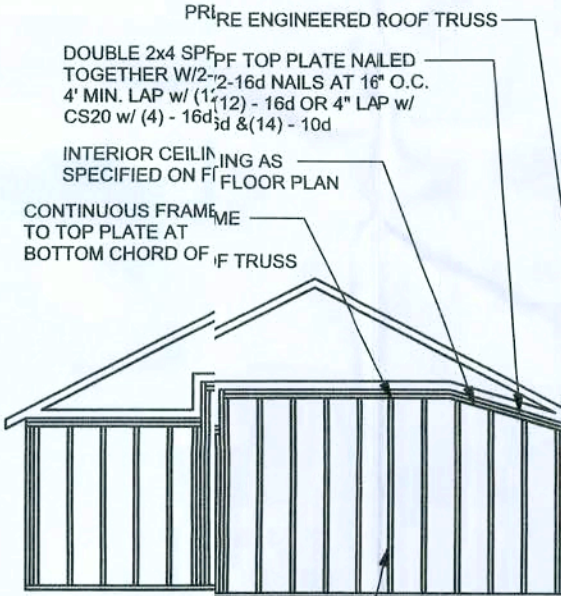


GARAGE DOOR BUCK INSTALLATION DETAIL

SCALE: N.T.S.

GRADE & SPECIES TABLE

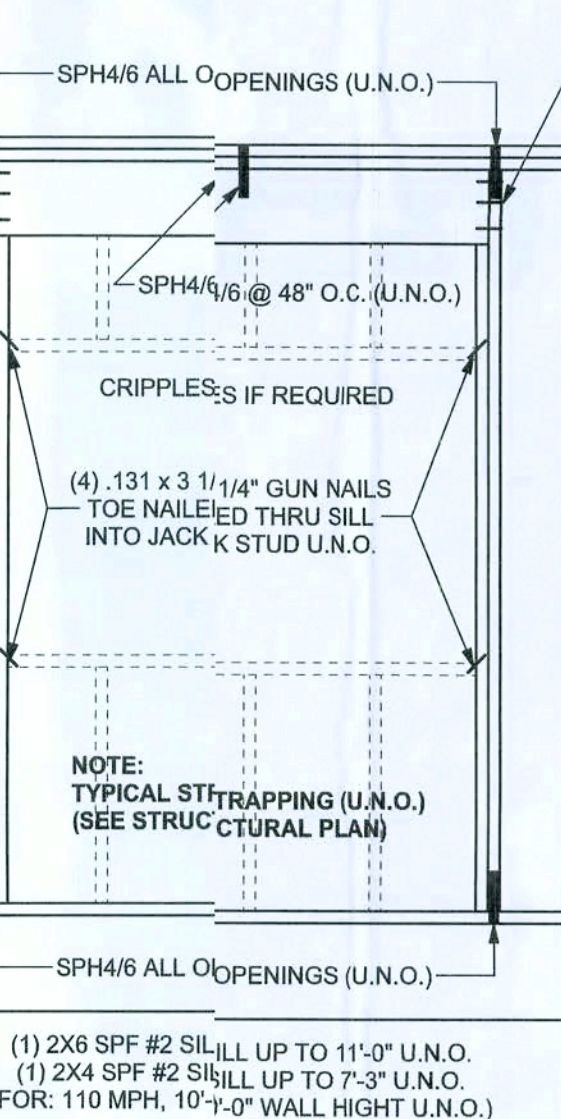
		Fb (psi)	E (10 ⁶ psi)
2x8	SYP #2	1200	1.6
2x10	SYP #2	1050	1.6
2x12	SYP #2	975	1.6
GLB	24F-V3 SP	2400	1.8
LSL	TIMBERSTRAND	1700	1.7
LVL	MICROLAM	1600	1.9
PSL	PARALAM	2900	2.0



CONTINUOUS FRAME TO CEILING / DIAPHRAGM DETAIL

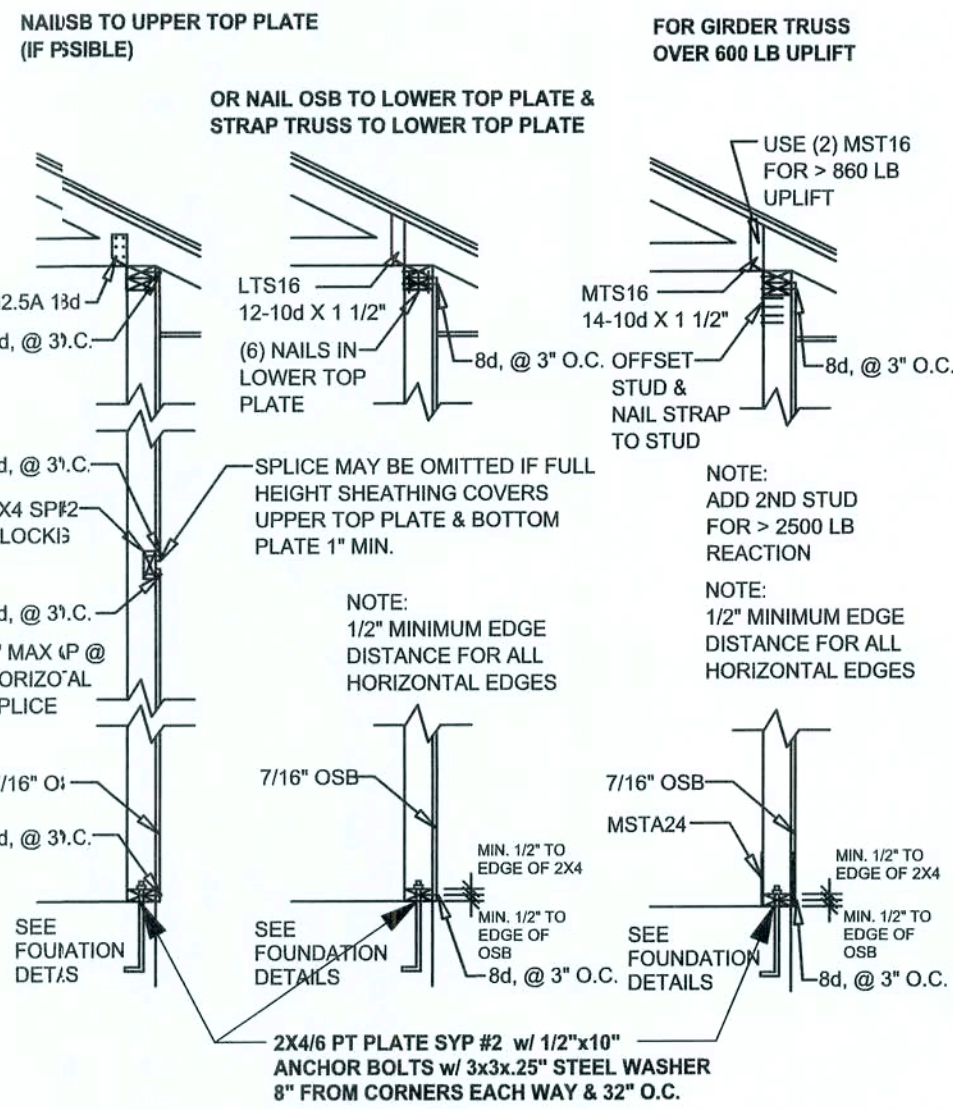
SCALE: N.T.S.

NOTE: IF TRUSS TO WALL STRAPS ARE NAILED TO THE HEADER THE SPH4/6 @ 48" O.C. ARE NOT REQUIRED



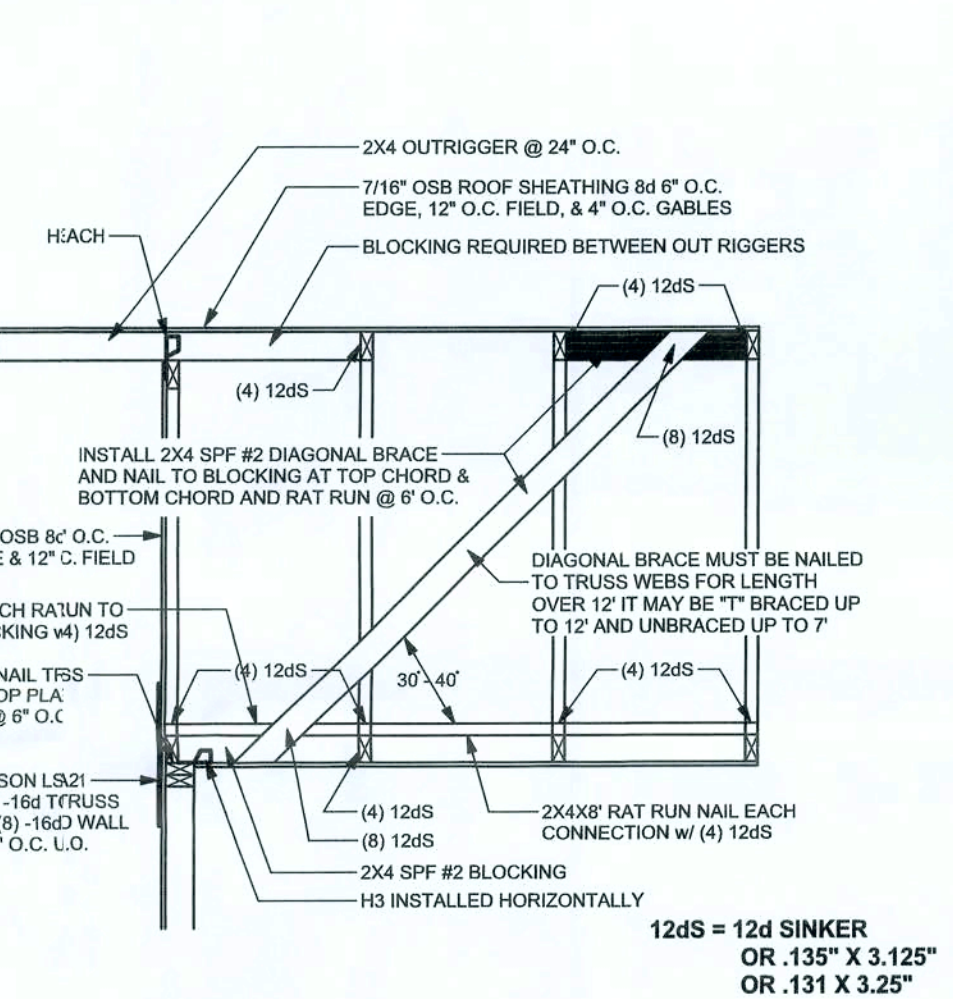
NOTE: TYPICAL STRAPPING (U.N.O.) (SEE STRUCTURAL PLAN)

NOTE: TYPICAL STRAPPING DETAIL (FOR OPENINGS 4'-0" OR LESS)



W6 - SHEATHING NAILING FOR TRUSS UPLIFT

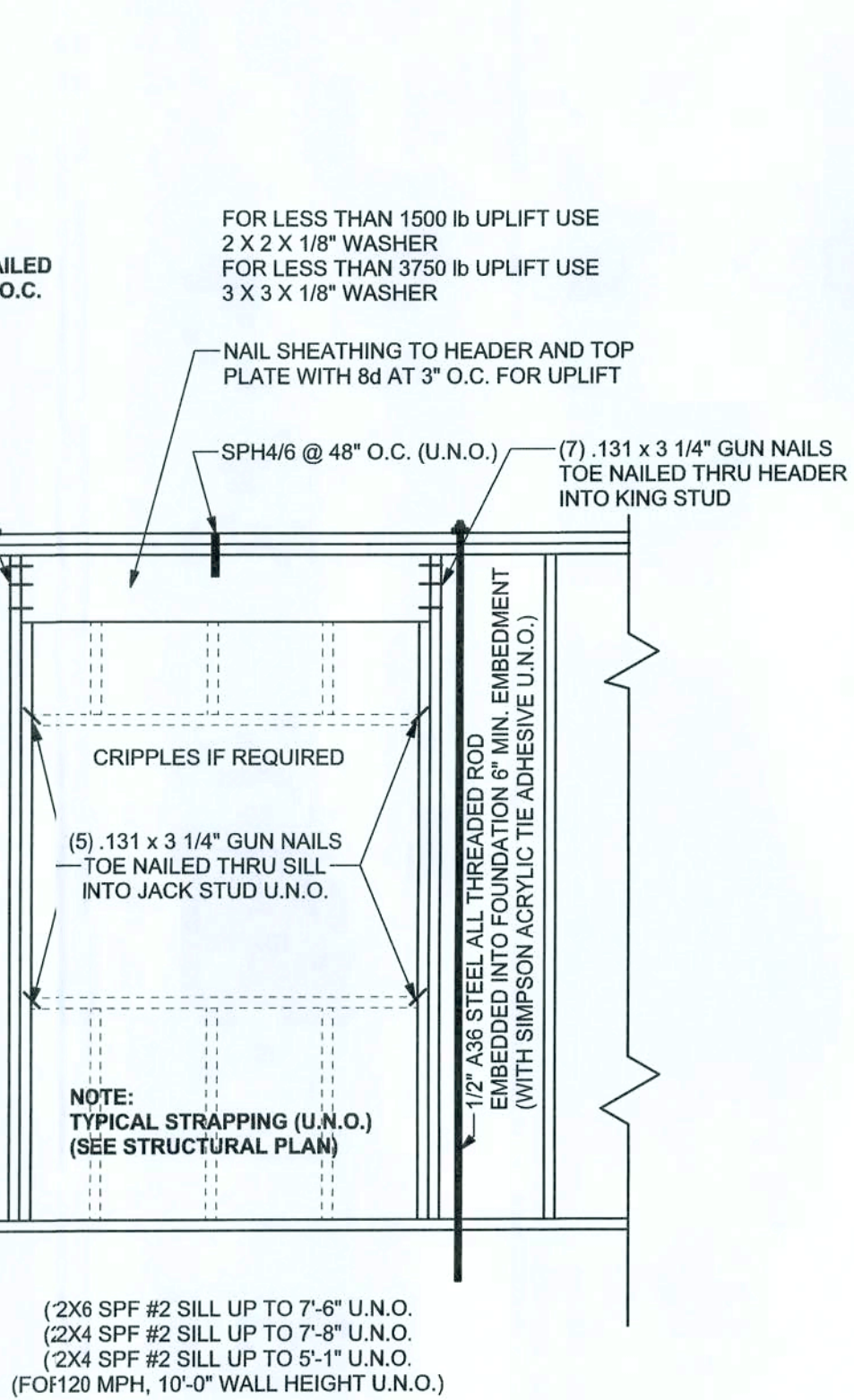
SCALE: 2/2" = 1'-0"



SPACE RAT RUN & DIAGONAL BRACE 6'-0" O.C. FOR GABLE HEIGHT UP TO 25'-0" 110 MPH, EXP. C, ENCLOSED

GABLE BRACING DETAIL

SCALE: 1/2" = 1'-0"



NOTE: TYPICAL STRAPPING (U.N.O.) (SEE STRUCTURAL PLAN)

NOTE: TYPICAL STRAPPING DETAIL (FOR OPENINGS OVER 4'-0")

NOTE: TYPICAL STRAPPING DETAIL (FOR OPENINGS OVER 4'-0")

NOTE: TYPICAL STRAPPING DETAIL (FOR OPENINGS OVER 4'-0")

NOTE: TYPICAL STRAPPING DETAIL (FOR OPENINGS OVER 4'-0")

NOTE: TYPICAL STRAPPING DETAIL (FOR OPENINGS OVER 4'-0")

NOTE: TYPICAL STRAPPING DETAIL (FOR OPENINGS OVER 4'-0")

NOTE: TYPICAL STRAPPING DETAIL (FOR OPENINGS OVER 4'-0")

NOTE: TYPICAL STRAPPING DETAIL (FOR OPENINGS OVER 4'-0")

NOTE: TYPICAL STRAPPING DETAIL (FOR OPENINGS OVER 4'-0")

NOTE: TYPICAL STRAPPING DETAIL (FOR OPENINGS OVER 4'-0")

NOTE: TYPICAL STRAPPING DETAIL (FOR OPENINGS OVER 4'-0")

NOTE: TYPICAL STRAPPING DETAIL (FOR OPENINGS OVER 4'-0")

NOTE: TYPICAL STRAPPING DETAIL (FOR OPENINGS OVER 4'-0")

NOTE: TYPICAL STRAPPING DETAIL (FOR OPENINGS OVER 4'-0")

NOTE: TYPICAL STRAPPING DETAIL (FOR OPENINGS OVER 4'-0")

NOTE: TYPICAL STRAPPING DETAIL (FOR OPENINGS OVER 4'-0")

NOTE: TYPICAL STRAPPING DETAIL (FOR OPENINGS OVER 4'-0")

NOTE: TYPICAL STRAPPING DETAIL (FOR OPENINGS OVER 4'-0")

NOTE: TYPICAL STRAPPING DETAIL (FOR OPENINGS OVER 4'-0")

NOTE: TYPICAL STRAPPING DETAIL (FOR OPENINGS OVER 4'-0")

NOTE: TYPICAL STRAPPING DETAIL (FOR OPENINGS OVER 4'-0")

NOTE: TYPICAL STRAPPING DETAIL (FOR OPENINGS OVER 4'-0")

NOTE: TYPICAL STRAPPING DETAIL (FOR OPENINGS OVER 4'-0")

NOTE: TYPICAL STRAPPING DETAIL (FOR OPENINGS OVER 4'-0")

NOTE: TYPICAL STRAPPING DETAIL (FOR OPENINGS OVER 4'-0")

NOTE: TYPICAL STRAPPING DETAIL (FOR OPENINGS OVER 4'-0")

NOTE: TYPICAL STRAPPING DETAIL (FOR OPENINGS OVER 4'-0")

NOTE: TYPICAL STRAPPING DETAIL (FOR OPENINGS OVER 4'-0")

NOTE: TYPICAL STRAPPING DETAIL (FOR OPENINGS OVER 4'-0")

NOTE: TYPICAL STRAPPING DETAIL (FOR OPENINGS OVER 4'-0")

NOTE: TYPICAL STRAPPING DETAIL (FOR OPENINGS OVER 4'-0")

NOTE: TYPICAL STRAPPING DETAIL (FOR OPENINGS OVER 4'-0")

NOTE: TYPICAL STRAPPING DETAIL (FOR OPENINGS OVER 4'-0")

NOTE: TYPICAL STRAPPING DETAIL (FOR OPENINGS OVER 4'-0")

NOTE: TYPICAL STRAPPING DETAIL (FOR OPENINGS OVER 4'-0")

NOTE: TYPICAL STRAPPING DETAIL (FOR OPENINGS OVER 4'-0")

NOTE: TYPICAL STRAPPING DETAIL (FOR OPENINGS OVER 4'-0")

NOTE: TYPICAL STRAPPING DETAIL (FOR OPENINGS OVER 4'-0")

NOTE: TYPICAL STRAPPING DETAIL (FOR OPENINGS OVER 4'-0")

NOTE: TYPICAL STRAPPING DETAIL (FOR OPENINGS OVER 4'-0")

NOTE: TYPICAL STRAPPING DETAIL (FOR OPENINGS OVER 4'-0")

NOTE: TYPICAL STRAPPING DETAIL (FOR OPENINGS OVER 4'-0")

NOTE: TYPICAL STRAPPING DETAIL (FOR OPENINGS OVER 4'-0")

NOTE: TYPICAL STRAPPING DETAIL (FOR OPENINGS OVER 4'-0")

NOTE: TYPICAL STRAPPING DETAIL (FOR OPENINGS OVER 4'-0")

NOTE: TYPICAL STRAPPING DETAIL (FOR OPENINGS OVER 4'-0")

NOTE: TYPICAL STRAPPING DETAIL (FOR OPENINGS OVER 4'-0")

NOTE: TYPICAL STRAPPING DETAIL (FOR OPENINGS OVER 4'-0")

NOTE: TYPICAL STRAPPING DETAIL (FOR OPENINGS OVER 4'-0")

NOTE: TYPICAL STRAPPING DETAIL (FOR OPENINGS OVER 4'-0")

NOTE: TYPICAL STRAPPING DETAIL (FOR OPENINGS OVER 4'-0")

NOTE: TYPICAL STRAPPING DETAIL (FOR OPENINGS OVER 4'-0")

NOTE: TYPICAL STRAPPING DETAIL (FOR OPENINGS OVER 4'-0")

NOTE: TYPICAL STRAPPING DETAIL (FOR OPENINGS OVER 4'-0")

NOTE: TYPICAL STRAPPING DETAIL (FOR OPENINGS OVER 4'-0")

NOTE: TYPICAL STRAPPING DETAIL (FOR OPENINGS OVER 4'-0")

NOTE: TYPICAL STRAPPING DETAIL (FOR OPENINGS OVER 4'-0")

NOTE: TYPICAL STRAPPING DETAIL (FOR OPENINGS OVER 4'-0")

NOTE: TYPICAL STRAPPING DETAIL (FOR OPENINGS OVER 4'-0")

NOTE: TYPICAL STRAPPING DETAIL (FOR OPENINGS OVER 4'-0")

NOTE: TYPICAL STRAPPING DETAIL (FOR OPENINGS OVER 4'-0")

NOTE: TYPICAL STRAPPING DETAIL (FOR OPENINGS OVER 4'-0")

NOTE: TYPICAL STRAPPING DETAIL (FOR OPENINGS OVER 4'-0")

NOTE: TYPICAL STRAPPING DETAIL (FOR OPENINGS OVER 4'-0")

NOTE: TYPICAL STRAPPING DETAIL (FOR OPENINGS OVER 4'-0")

NOTE: TYPICAL STRAPPING DETAIL (FOR OPENINGS OVER 4'-0")

NOTE: TYPICAL STRAPPING DETAIL (FOR OPENINGS OVER 4'-0")

NOTE: TYPICAL STRAPPING DETAIL (FOR OPENINGS OVER 4'-0")

NOTE: TYPICAL STRAPPING DETAIL (FOR OPENINGS OVER 4'-0")

NOTE: TYPICAL STRAPPING DETAIL (FOR OPENINGS OVER 4'-0")

NOTE: TYPICAL STRAPPING DETAIL (FOR OPENINGS OVER 4'-0")

NOTE: TYPICAL STRAPPING DETAIL (FOR OPENINGS OVER 4'-0")

NOTE: TYPICAL STRAPPING DETAIL (FOR OPENINGS OVER 4'-0")

NOTE: TYPICAL STRAPPING DETAIL (FOR OPENINGS OVER 4'-0")

NOTE: TYPICAL STRAPPING DETAIL (FOR OPENINGS OVER 4'-0")

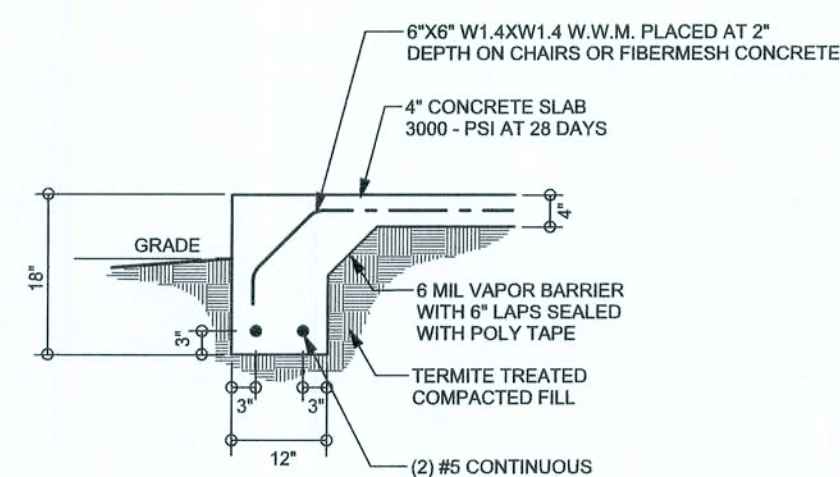
NOTE: TYPICAL STRAPPING DETAIL (FOR OPENINGS OVER 4'-0")

NOTE: TYPICAL STRAPPING DETAIL (FOR OPENINGS OVER 4'-0")

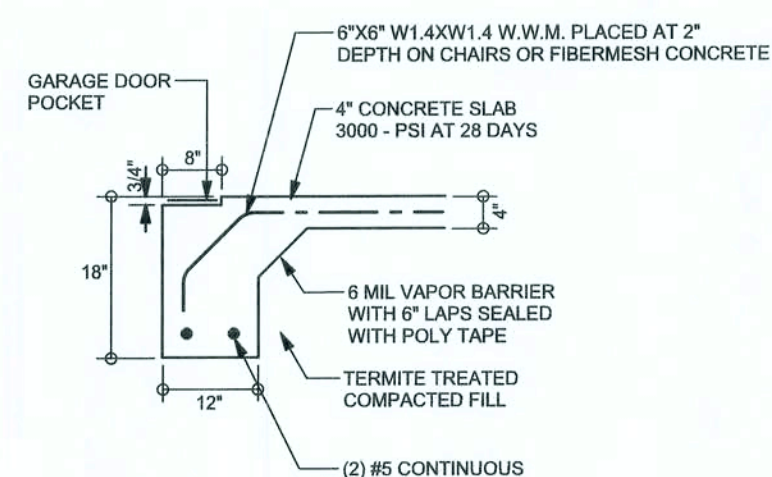
NOTE: TYPICAL STRAPPING DETAIL (FOR OPENINGS OVER 4'-0")

NOTE: TYPICAL STRAPPING DETAIL (FOR OPENINGS OVER

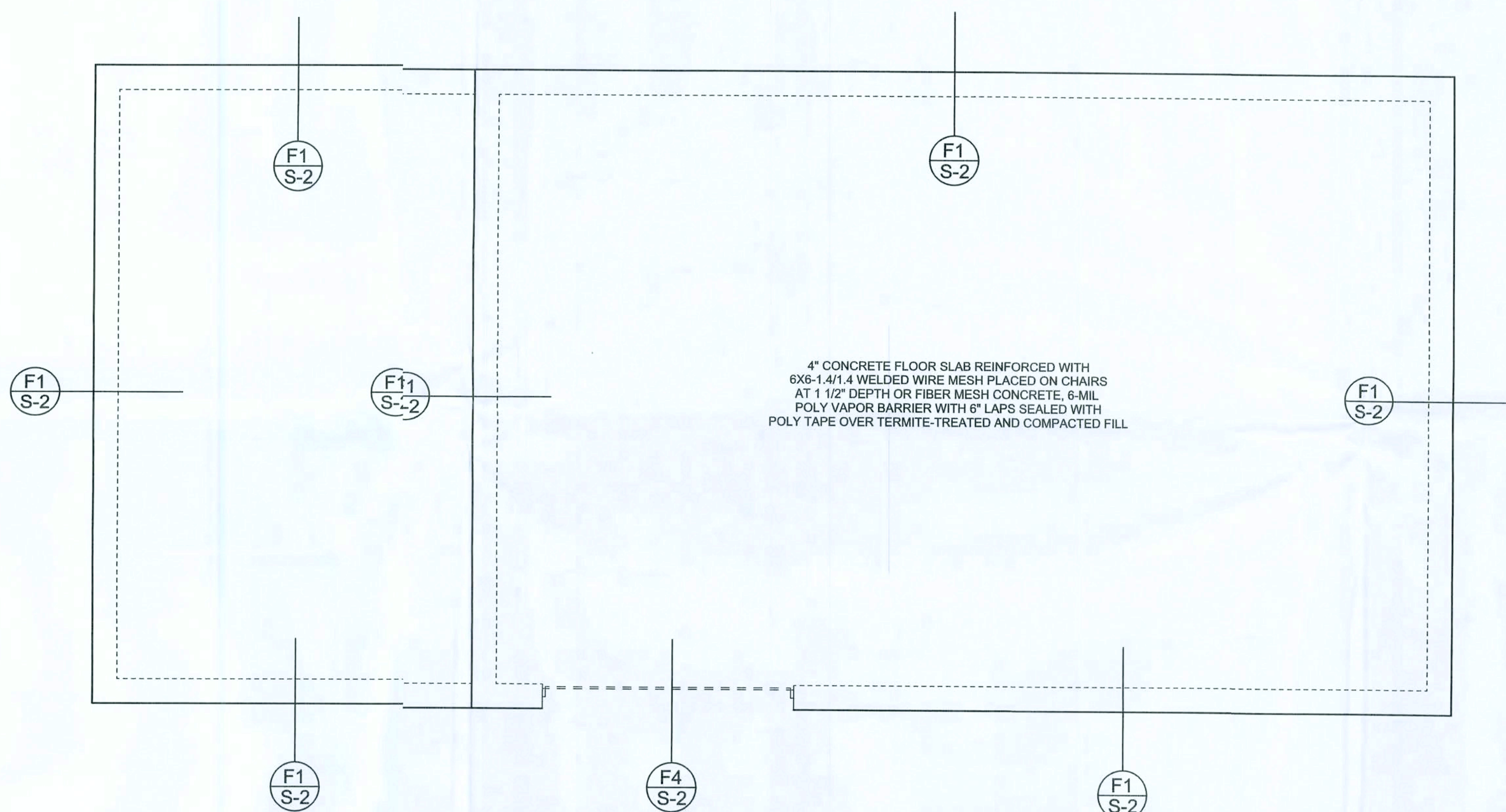
REVISIONS

SOFTPLAN
ARCHITECTURAL DESIGN SOFTWARE


F1
S-2 **MONOLITHIC FOOTING**
SCALE: 1/2" = 1'-0"



F4
S-2 **GARAGE DOOR FOOTING**
SCALE: 1/2" = 1'-0"



FOUNDATION PLAN

SCALE: 1/4" = 1'-0"
DIMENSIONS ON STRUCTURAL SHEETS
ARE NOT EXACT. REFER TO ARCHITECTURAL
FLOOR PLAN FOR ACTUAL DIMENSIONS

WINDLOAD ENGINEER: Mark Disosway,
P.E. No. 53015, P.O. Box 868, Lake City, FL
32056, 386-754-5419

DIMENSIONS:
Stated dimensions supercede scaled
dimensions. Refer all questions to
Mark Disosway, P.E. for resolution.
Do not proceed without clarification.

COPYRIGHTS AND PROPERTY RIGHTS:
Mark Disosway, P.E. hereby expressly reserves
his common law copyrights and property right in
these instruments of service. His document is
not to be reproduced, altered or copied in any
form or manner without first its express written
permission and consent of Mark Disosway.

CERTIFICATION: I hereby certify that I have
examined this plan, and that to applicable
portions of the plan, relating to wind engineering
comply with section R301.2.1 Florida building
code residential 2004, to the best of my
knowledge.

LIMITATION: This design is valid for one
building, at specified location.

MARK DISOSWAY
P.E. 53015

01 FEB 08
SEAL

Brad Barney Garage

ADDRESS
Lot 14 Blk. B Oakhaven S/D
Columbia county Florida

Mark Disosway P.E.
P.O. Box 868
Lake City, Florida 32056
Phone: (386) 754 - 5419
Fax: (386) 269- 4871

PRINTED DATE:
February 01, 2008

DRAWN BY: CHECKED BY:

FINALS DATE:
01 / Feb / 08

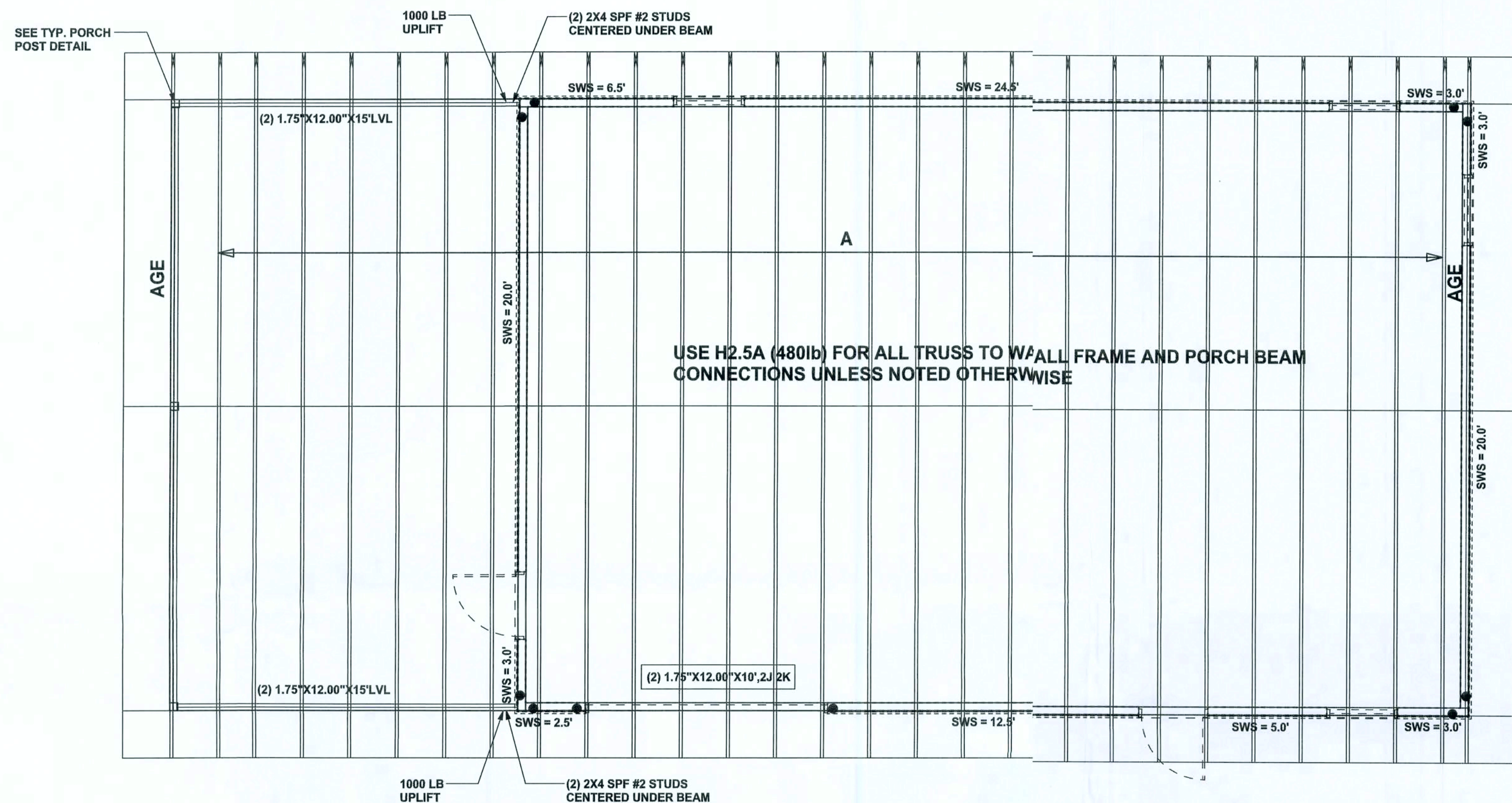
JOB NUMEER:
711202

DRAWING NUMBER

S-2
OF 3 SHEETS

REVISIONS	

SOFTPLAN
ARCHITECTURAL DESIGN SOFTWARE



STRUCTURAL PLAN
SCALE: 1/4" = 1'-0"

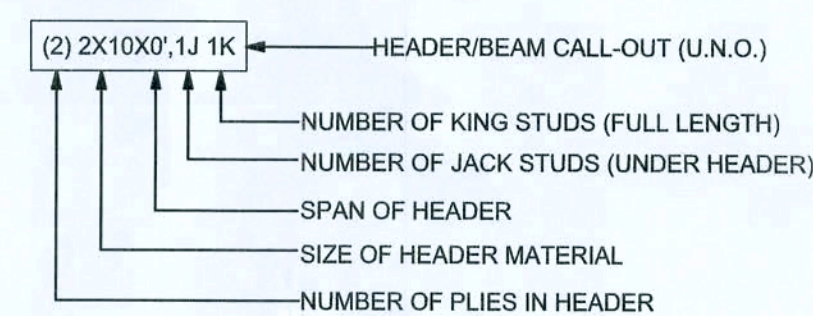
STRUCTURAL PLAN NOTES

- SN-1** ALL LOADBEARING FRAME WALL & PORCH HEADERS SHALL BE MINIMUM OF (2) 2X10 SYP #2 (U.N.O.)
- SN-2** ALL LOADBEARING FRAME WALL HEADERS SHALL HAVE (1) JACK STUD & (1) KING STUD EACH SIDE (U.N.O.)
- SN-3** DIMENSIONS ON STRUCTURAL SHEETS ARE NOT FACT. REFER TO ARCHITECTURAL FLOOR PLAN FOR ACTUAL DIMENSIONS
- SN-4** PERMANENT TRUSS BRACING IS TO BE INSTALLED AT LOCATIONS SHOWN ON THE SEALED TRUSS DRAWINGS. LATERAL BRACING IS TO BE RESTRAINED PER BCSI-03. BCSI-B1, BSI-B2, & BCSI-B3. BCSI-B1, BCSI-B2, & BCSI-B3 ARE FURNISHED BY THE TRUSS SUPPLIER, WITH THE SEALED TRUSS PACKAGE

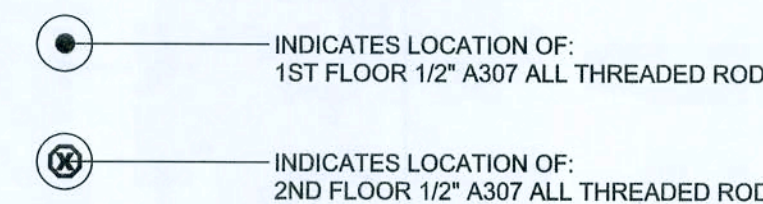
WALL LEGEND

SWS = 0.0'	1ST FLOOR EXTERIOR WALL
SWS = 0.0'	2ND FLOOR EXTERIOR
IBW	1ST FLOOR INTERIOR BEARING WALLS
IBW	2ND FLOOR INTERIOR BEARING WALLS

HEADER LEGEND



THREADED ROD LEGEND



TOTAL SHEAR WALL SEGMENTS

SWS = 0.0' INDICATES SHEAR WALL SEGMENTS

	REQUIRED	ACTUAL
TRANSVERSE	31.5'	46.0'
LONGITUDINAL	9.0	57.0'

CONNECTIONS, WALL, & HEADER DESIGN IS BASED ON REACTIONS & UPLIFTS FROM TRUSS ENGINEERING FURNISHED BY BUILDER. ANDERSON TRUSS COMPANY JOB #7-333

WINDLOAD ENGINEER: Mark Disoway, P.E. No. 53915, P.O. Box 868, Lake City, FL 32056, 386-754-5419

DIMENSIONS: Stated dimensions supersede scalar dimensions. Refer all questions to Mark Disoway, P.E. for resolution. Do not proceed without clarification.

COPYRIGHTS AND PROPERTY RIGHTS: Mark Disoway, P.E. hereby expressly reserves its common law copyrights and property right in these instruments of service. This document is not to be reproduced, altered or copied in any form or manner without first the express written permission and consent of Mark Disoway.

CERTIFICATION: I hereby certify that I have examined this plan, and that the applicable portions of the plan, relating to wind engineering comply with section R301.2.1, Florida Building Code Residential 2004, to the best of my knowledge.

LIMITATION: This design is valid for one building, at specified location.

MARK DISOWAY
P.E. 53915
Mark Disoway
01 FEB 08
SEAL

Brad Barney Gange

ADDRESS:
Lot 14 Blk. B Oakhaven 3/D
Columbia county, Florida

Mark Disoway P.E.
P.O. Box 868
Lake City, Florida 32056
Phone: (386) 754 - 4419
Fax: (386) 269 - 4171

PRINTED DATE:
February 01, 2008

DRAWN BY: **CHECKED BY:**

FINALS DATE:
01 / Feb / 08

JOB NUMBER:
711202

DRAWING NUMBER
S-3
OF 3 SHEETS