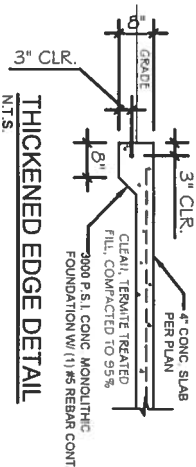
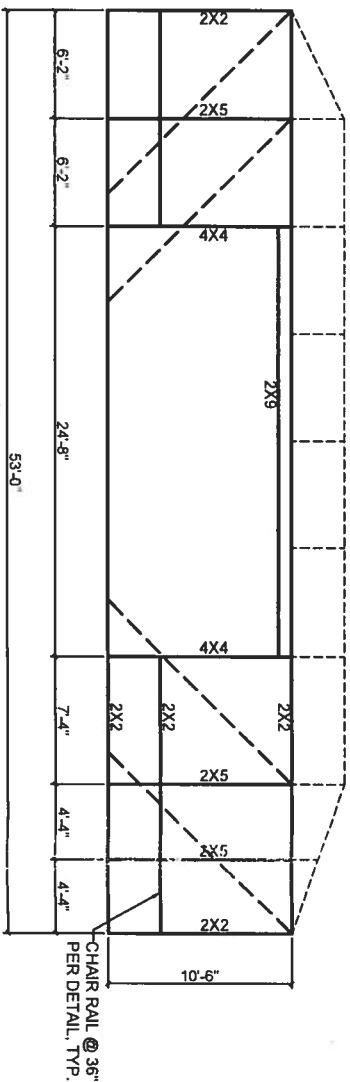
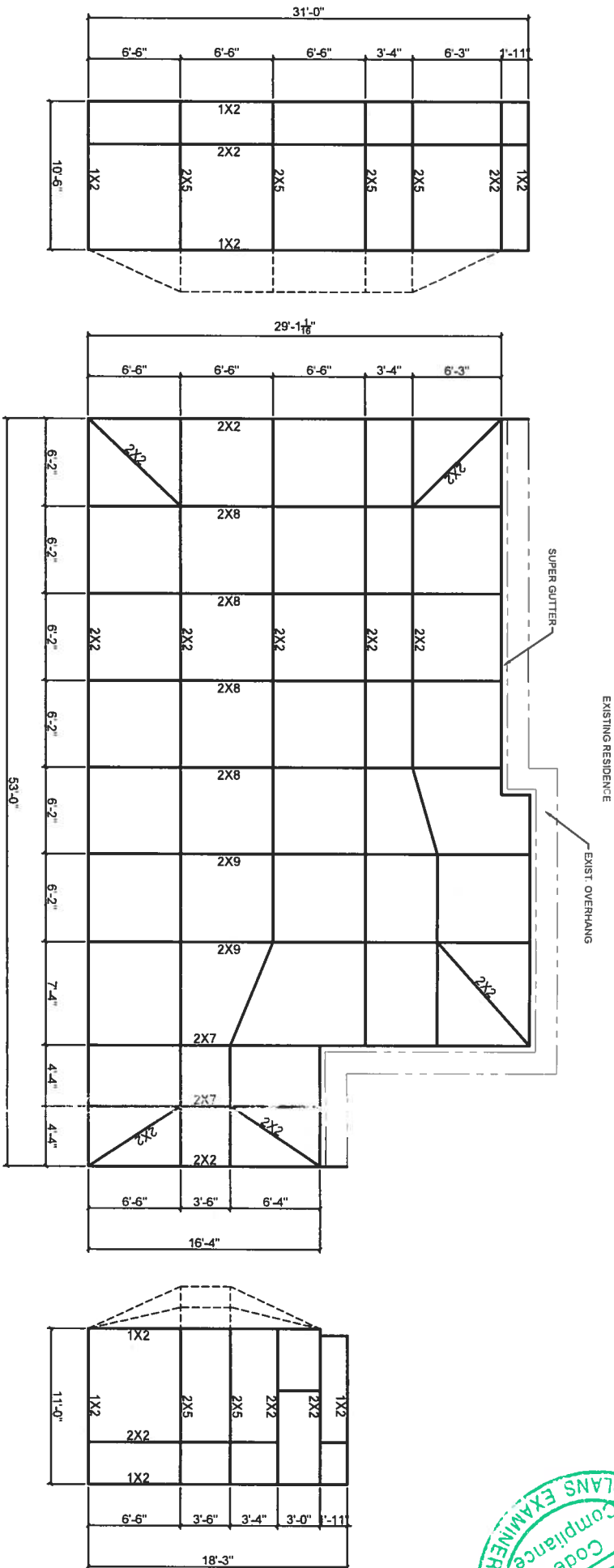


FOUNDATION TIE-IN DETAIL
N.T.S.



THICKENED EDGE DETAIL
N.T.S.



SCALE: 3/32" = 1'-0"
SCREEN ENCLOSURE = 1600 S.F.

INDUSTRY STANDARD MATERIAL SIZES

ALUMINUM ALLOY 6005 T-5 SELF MATING SECTIONS (SMB)	
2" X 4" X 0.044" X 0.046"	
2" X 5" X 0.050" X 0.116"	
2" X 6" X 0.050" X 0.120"	
2" X 7" X 0.050" X 0.120"	
2" X 8" X 0.072" X 0.224"	
2" X 9" X 0.082" X 0.306"	
2" X 10" X 0.092" X 0.374"	
ALUMINUM ALLOY 6005 T-5 HOLLOW SECTION (PB)	
2" X 4" X 0.050"	
2" X 5" X 0.062"	
ALUMINUM ALLOY 6005 T-5 HOLLOW POST	
3" X 3" X 0.046" FLUTED	
3" X 3" X 0.072" W/ SPLINE	
3" X 3" X 0.090"	
3" X 3" X 0.125"	
4" X 4" X 0.125"	
ALUMINUM ALLOY 6063 T-6 HOLLOW SECTION	
1" X 2" X 0.046"	
1" X 3" X 0.046"	
1" X 4" X 0.046"	
2" X 2" X 0.046"	
2" X 3" X 0.050"	
2" X 3" X 0.070"	
3" X 2" X 0.050"	
3" X 2" X 0.070"	
ALUMINUM ALLOY 5052-H2 ANGLE	
2" X 2" X 0.0625" LIGHT	
2" X 2" X 0.125" HEAVY	
1" X 1" X 0.0625"	
ALUMINUM ALLOY 5052-H2 RECEIVING CHANNEL (RC)	
1-1/2" X 2-1/8" X 0.046"	
1-1/2" X 3-1/8" X 0.046"	
1-1/2" X 4-1/8" X 0.046"	

THE STRUCTURAL SYSTEM FOR THIS BUILDING HAVE BEEN REVIEWED
FOR COMPLIANCE WITH CHAPTER 16 OF THE FLORIDA BUILDING CODE
NINTH EDITION 2013 USING ASCE/SEI 7-10 140 M.P.H. 3 SECOND GUST.

Michael A. Robinson, P.E.

MICHAEL A. ROBINSON, P.E.
(Rust)
STRUCTURAL ENGINEERING, INC.
INDUSTRIAL, COMMERCIAL, and RESIDENTIAL
921 SHADOW DRIVE
SUITE No. 3
LAKELAND, FLORIDA 33809

BLUEWATER
DRAFTING, INC.

1075 W. Gulf to Lake Hwy, Lecanto, FL 34461
Citrus PH: 352-436-4225 Marion PH: 352-522-0650
FAX: 352-436-4265
EMAIL: plans@bluewaterdrafting.com

JORDAN'S
CONSTRUCTION

THE CONTRACTOR SHALL BE RESPONSIBLE FOR
VERIFYING ALL DIMENSIONS SHOWN, AND THAT ALL
CONSTRUCTION COMPLEIES WITH LOCAL BUILDING CODE
& ORDINANCES.

THE MCKENZIE RESIDENCE

A CUSTOM PLAN FOR:

Project: BW-8308

Date: 7-29-12

Prelim:

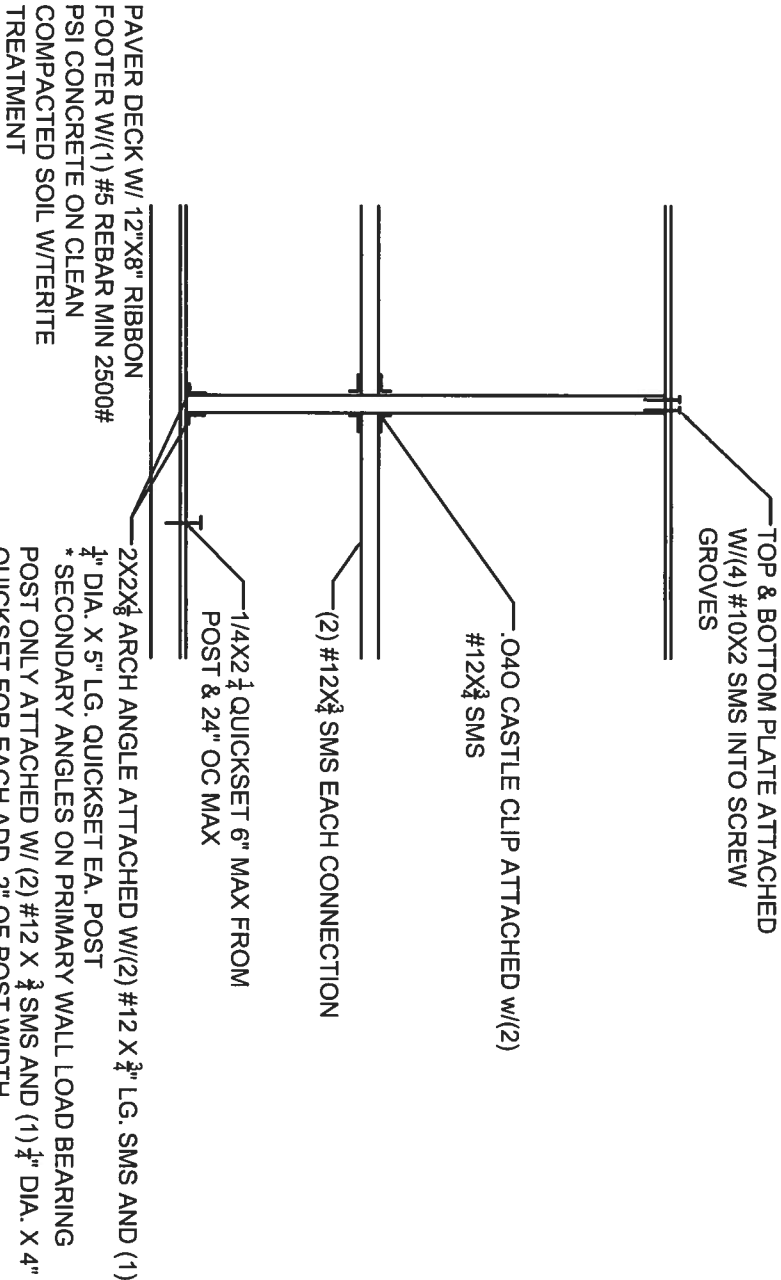
Final: 8-6-12

SHEET

1 OF 4

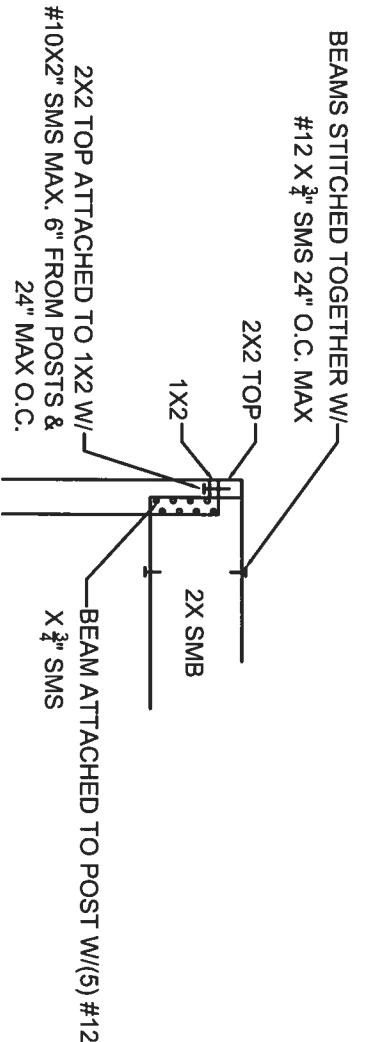
STATE OF FLORIDA
PROFESSIONAL ENGINEER
Fiduciary Registration
No. 28317

OFFICE: 863-815-9541
FAX: 863-858-9861
EMAIL: mrobinson24@str-eng.com



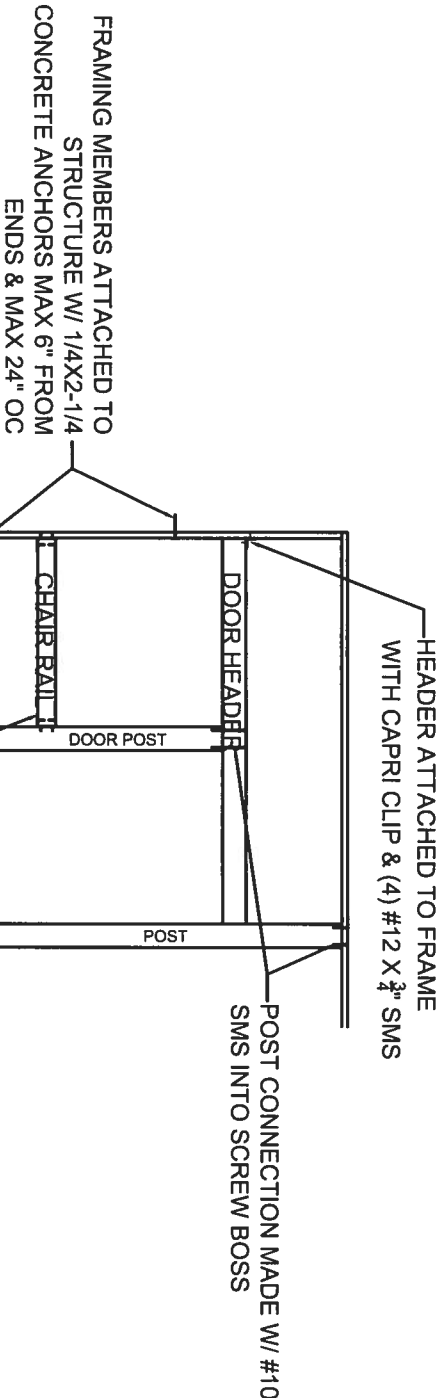
TYP WALL DETAIL

N.T.S.



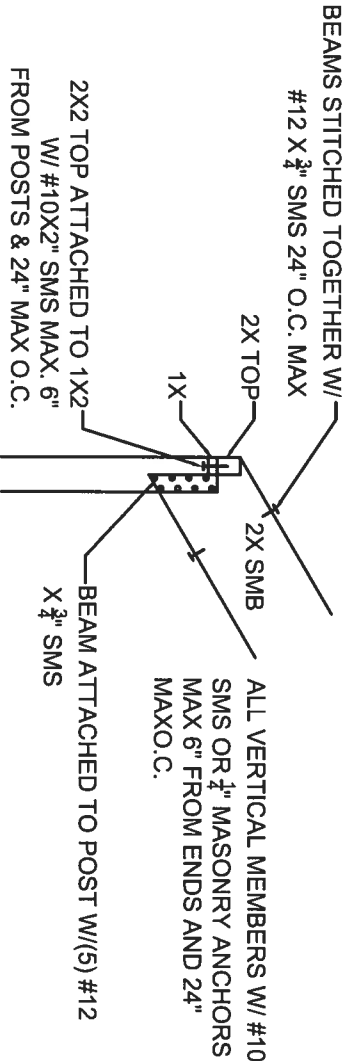
TYP 2X POST TO BEAM CONNECTION

N.T.S.



TYP FRAME DETAIL

N.T.S.



TYP POST TO SLOPED BEAM CONNECTION

N.T.S.

BLUEWATER DRAFTING, INC.

1075 W. Gulf to Lake Hwy, Lecanto, FL 34461
Citrus PH: 352-436-4225 Marion PH: 352-522-0650
FAX:352-436-4265
EMAIL: plans@bluewaterdrafting.com

JORDAN'S CONSTRUCTION

THE CONTRACTOR SHALL BE RESPONSIBLE FOR VERIFYING ALL DIMENSIONS SHOWN, AND THAT ALL CONSTRUCTION COMPLIES WITH LOCAL BUILDING CODE & ORDINANCES.

A CUSTOM PLAN FOR:
THE MCKENZIE RESIDENCE

4 OF 4

Project: BW-8309
Date: 7-29-12
Prelim:
Final: 8-6-12

Michael A. Robinson P.E.
Professional Engineer
No. 28317

Professional Engineer
No. 28317

Michael A. Robinson P.E.
(Rusty)
STRUCTURAL ENGINEERING, INC.
INDUSTRIAL, COMMERCIAL, and RESIDENTIAL
921 SHADOW DRIVE
SUITE No. 3
LAKELAND, FLORIDA 33809
OFFICE: 863-815-9541
FAX: 863-858-9861
EMAIL: mrobinson24@str-eng.com