

WIND SPEED AND EXPOSURE HAVE BEEN DETERMINED USING THE ADVANCED

AND GOOGLE EARTH.

-

- $$\frac{C-1}{A-3}$$

1X2

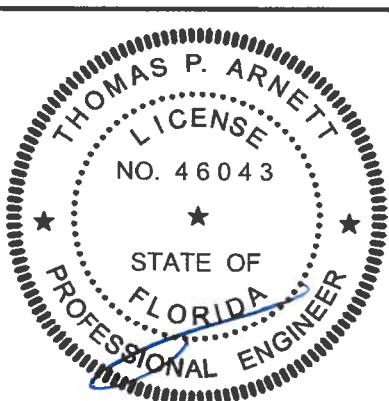
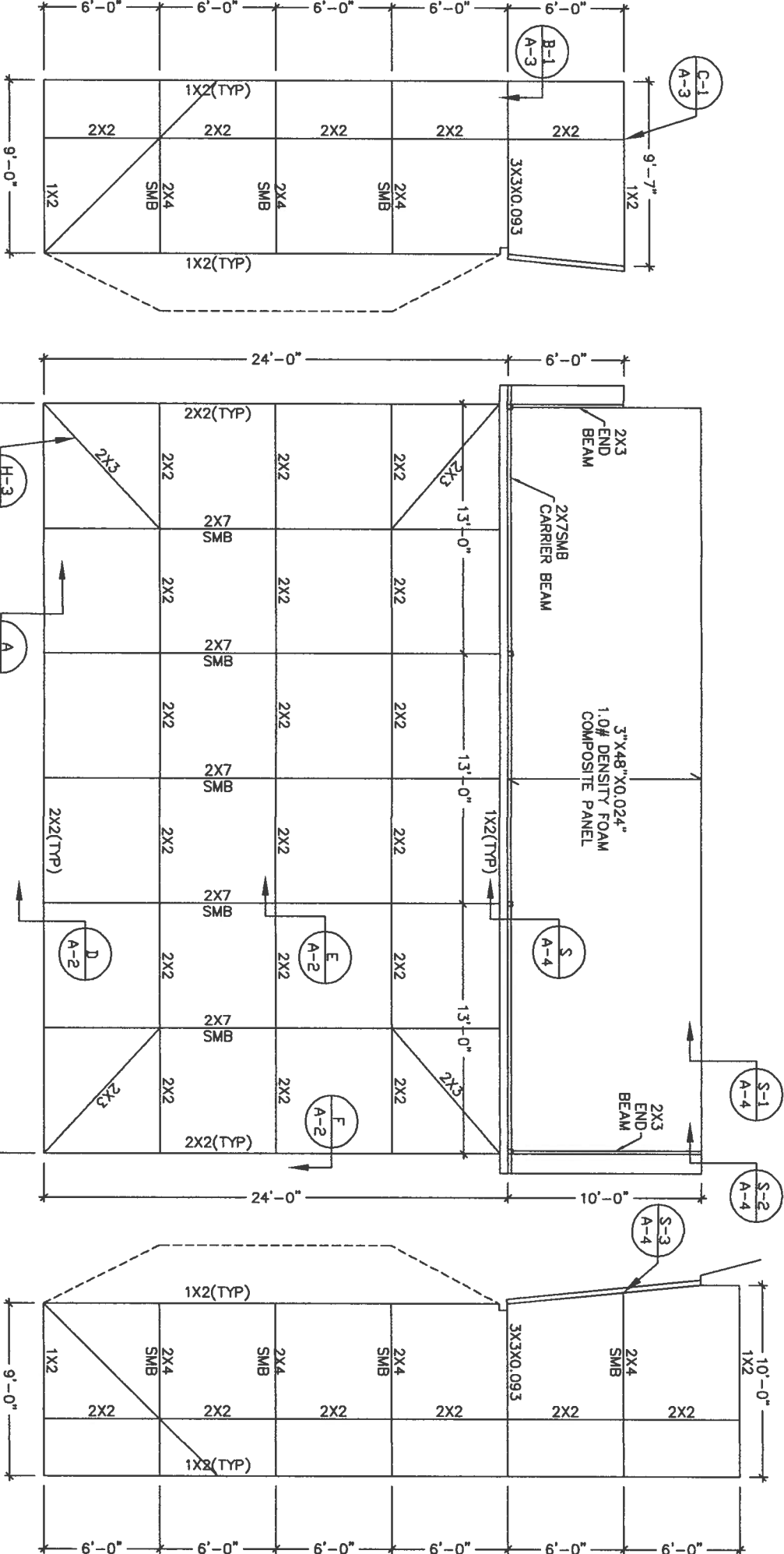
-

3X3X0.093

2X2

6

-
- Structural floor plan of the second floor. The overall dimensions are 24'-0" wide by 9'-0" deep. The plan shows a grid of columns and beams. Beams are labeled 1X2 (TYP) and 2X2. Columns are labeled 2X4 SMB. A dashed line indicates a break in the structure.



FLORIDA LICENSE: CA LIC. NO. 32807

© 2006 The Authors
Journal compilation © 2006 Blackwell Publishing Ltd

--	--

--	--

--	--	--

[illegible]

ALUMINUM MEMBERS DIMENSIONS

HOLLOW SECTIONS

2 x 2: 2" x 2" x 0.046"
2 x 3: 2" x 3" x 0.050"
2 x 4: 2" x 4" x 0.050"
2 x 5: 2" x 5" x 0.050"

OPEN BACK SECTIONS

1 x 2: 1" x 2" x 0.040"
1 x 3: 1" x 3" x 0.045"

SNAP SECTIONS

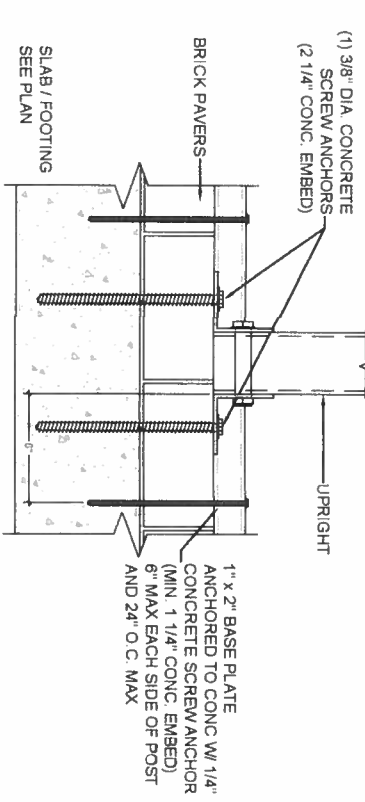
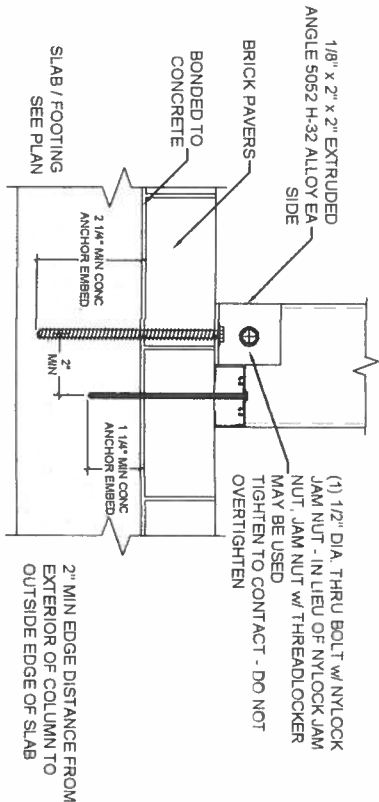
2 x 2 Snap: 2" x 2" x 0.045"
2 x 3 Snap: 2" x 3" x 0.050"
2 x 4 Snap: 2" x 4" x 0.045"

SELF MATING (SMB)

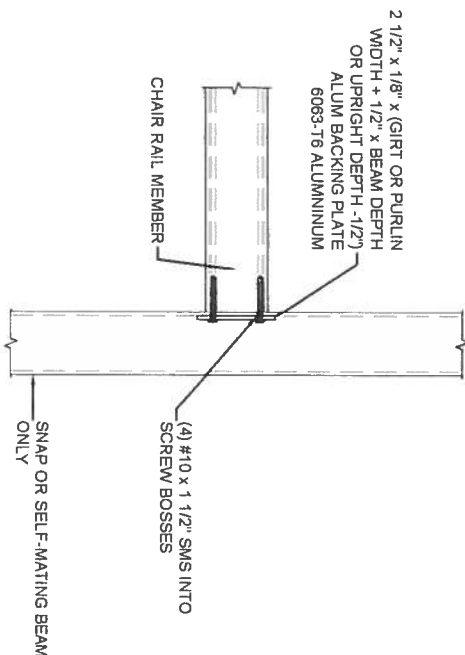
2 x 4 SMB: 2" x 4" x 0.044" x 0.100"
2 x 5 SMB: 2" x 5" x 0.050" x 0.100"
2 x 6 SMB: 2" x 6" x 0.050" x 0.120"
2 x 7 SMB: 2" x 7" x 0.057" x 0.120"
2 x 8 SMB: 2" x 8" x 0.072" x 0.124"
2 x 9 SMB: 2" x 9" x 0.072" x 0.124"
2 x 10 SMB: 2" x 10" x 0.092" x 0.398"

MINIMUM FASTENER EDGE DISTANCE: 1/2"
MINIMUM FASTENER SPACING: 3/4"

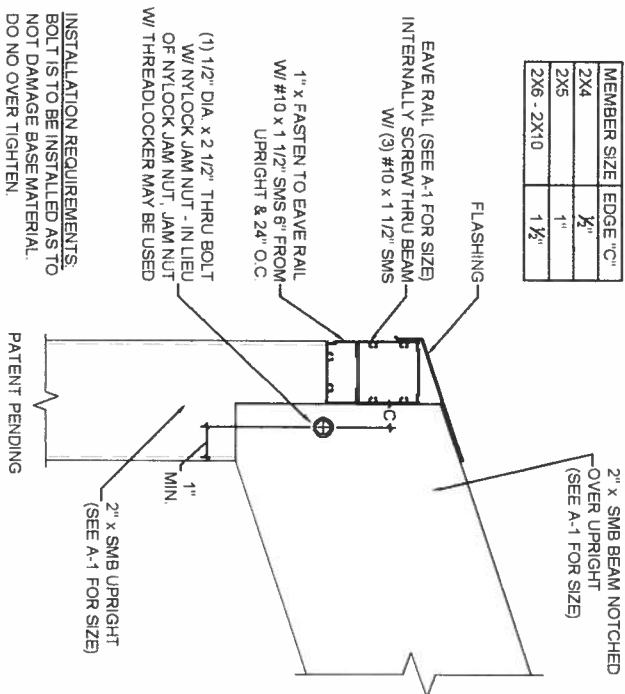
CONCRETE SCREW ANCHOR:
SIMPSON TITEN HD OR EQUIVALENT
SHEET METAL SCREWS (SMS):
ITW / BULDEX OR EQUIVALENT



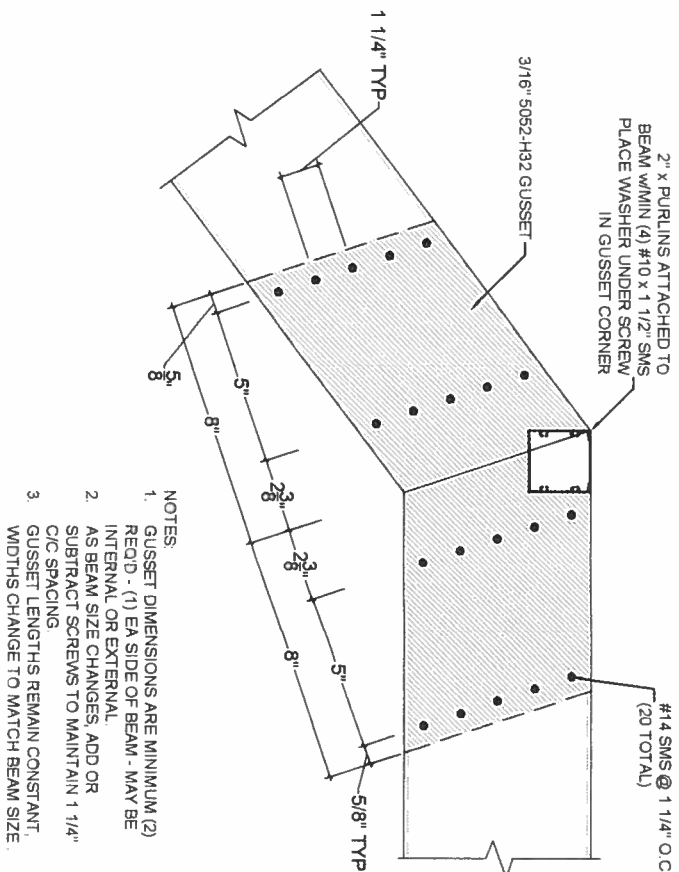
B 2" x 4" OR LARGER UPRIGHT TO CONCRETE W/PAVERS DETAIL
SCALE NTS



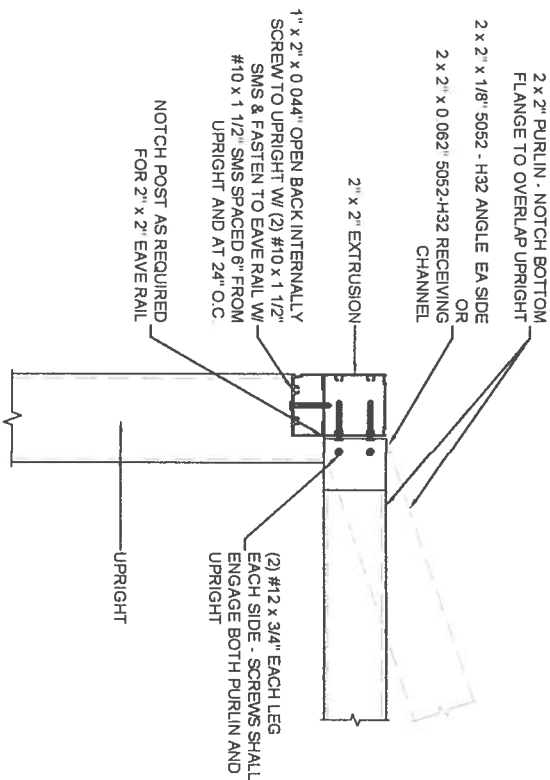
C PURLIN OR GIRT TO BEAM OR POST DETAIL
SCALE NTS



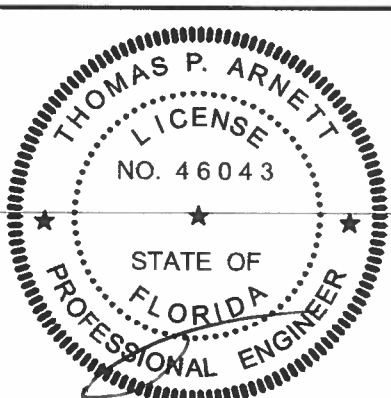
D UPRIGHT TO BEAM CONNECTION
SCALE NTS



E TYPICAL INTERNAL OR EXTERNAL GUSSET DETAIL - RIGID MEDIUM
SCALE NTS



F UPRIGHT TO PURLIN CONNECTION DETAIL
SCALE NTS



PROFESSIONAL ENGINEER
THOMAS P. ARNETT, P.E.
LICENSE No. #46043

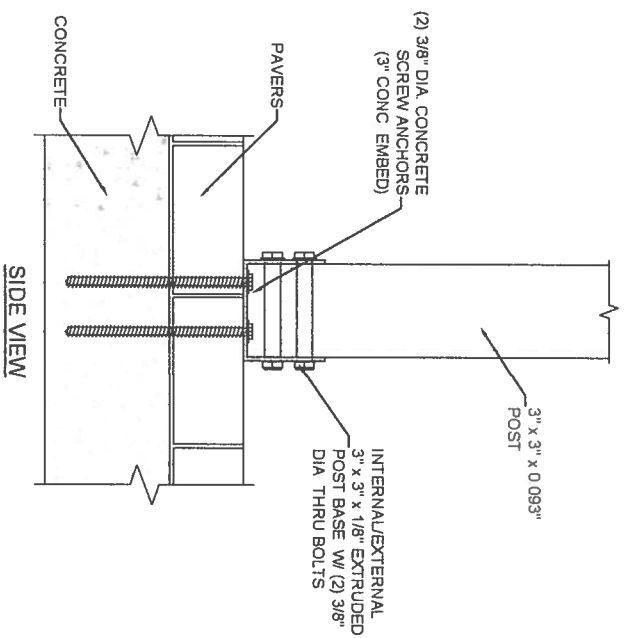
FLORIDA ALUMINUM
ENGINEERING, INC.
5440 MARINER STREET SUITE 110
TAMPA FL 33609
TEL: (813) 374-2403
FAX: (813) 374-4516

FLORIDA LICENSE: CA LIC. NO. 32807

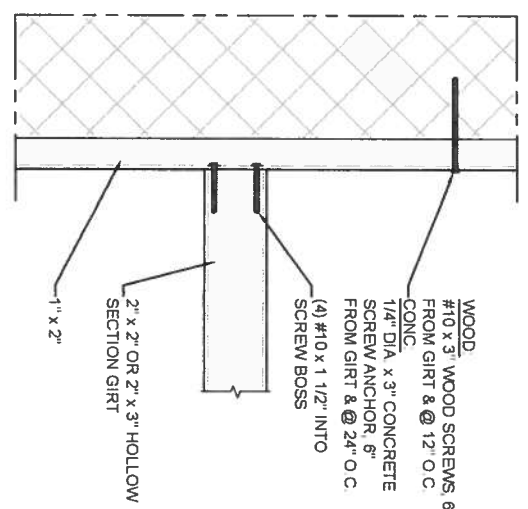
PROJECT ADDRESS:
CORBITT
465 BROTHERS LANE
LAKE CITY, FL

DRAWN BY
TP
DATE DRAWN
07/11/19
REVISION
1
2
3
4

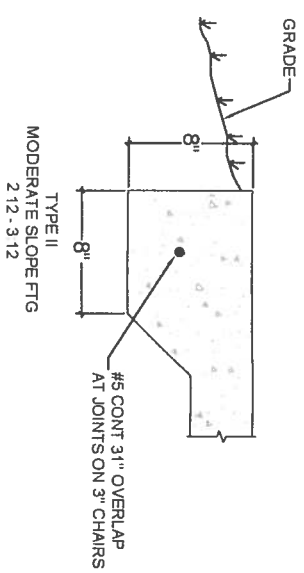
SHEET NO:
A-2



B-1 3" x 3" POST TO CONCRETE W/ PAVERS CONNECTION DETAIL
SCALE: NTS

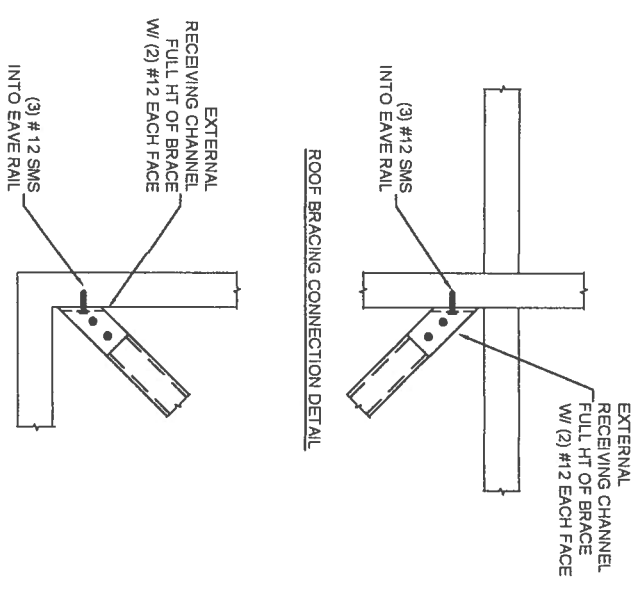


C-1 1X2 TO HOST STRUCTURE DETAIL
SCALE: NTS

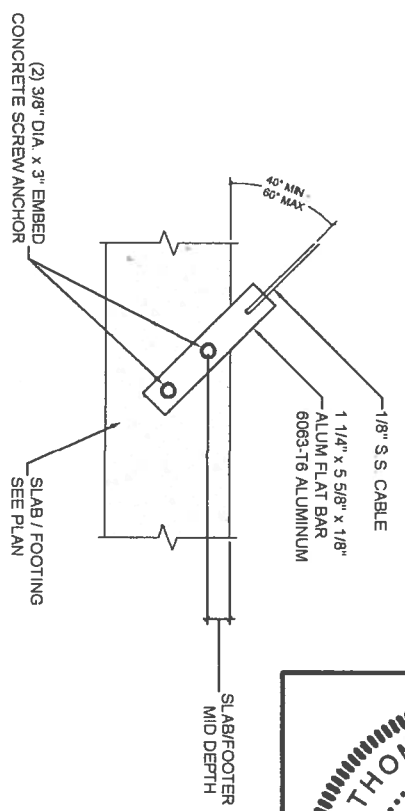


- NOTES FOR ALL FOUNDATION TYPES:**
1. THE FOUNDATIONS SHOWN ARE BASED ON A MIN SOIL BEARING PRESSURE OF 1,500 PSF.
 2. THE SLAB/FOUNDATION SHALL BE CLEARED OF DEBRIS, ROOTS AND COMPACTED PRIOR TO PLACEMENT OF CONC.
 3. CONCRETE SHALL BE PER SPECIFICATIONS ON SHEET A-1
 4. FIBERMESH MAY BE USED IN LIEU FOR WELDED WIRE MESH
 5. VAPOR BARRIER NEED NOT BE INSTALLED FOR EXTERIOR NON-HABITABLE CONCRETE FLAT WORK

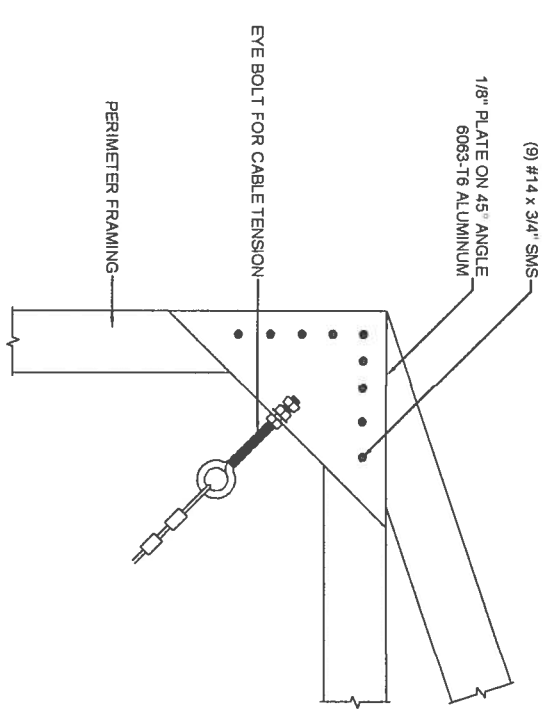
A TYPE II FOOTING
SCALE: NTS



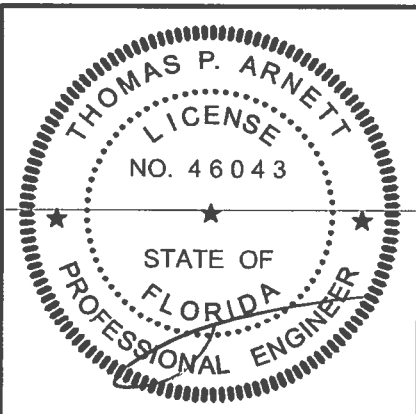
H-3 ROOF BRACING CONNECTION DETAIL
SCALE: NTS



H-1 CABLE CONNECTIONS AT FOUNDATION
SCALE: NTS



H-2 CABLE CONNECTION AT CORNER
SCALE: NTS



PROFESSIONAL ENGINEER
THOMAS P. ARNETT, P.E.
LICENSE No. #46043

FLORIDA ALUMINUM ENGINEERING, INC.
5440 MARINER STREET SUITE 110
TAMPA FL 33609
TEL: (813) 374-2403
FAX: (813) 374-4516
FLORIDA LICENSE: CA LIC. NO. 32807

PROJECT ADDRESS:
CORBITT
465 BROTHERS LANE
LAKE CITY, FL

DRAWN BY	TP
DATE DRAWN	07/11/19
REVISION	
1	-
2	-
3	-
4	-

A-3
SHEET NO:



PROFESSIONAL ENGINEER
THOMAS P. ARNETT, P.E.
LICENSE No. #46043

**FLORIDA ALUMINUM
ENGINEERING, INC.**
5440 MARINER STREET SUITE 110
TAMPA FL 33609
TEL: (813) 374-2403
FAX: (813) 374-4516

PROJECT ADDRESS:
CORBITT
465 BROTHERS LANE
LAKE CITY, FL

DRAWN BY	TP
DATE DRAWN	07/11/19
REVISION	

1	-
2	-
3	-
4	-

SHEET NO: _____

4-A