

GENERAL NOTES:

TRUSSES: TRUSSES SHALL BE DESIGNED BY A FLORIDA LICENSED ENGINEER IN ACCORDANCE WITH THE FBCR. TRUSS ENGINEERING SHALL INCLUDE TRUSS DESIGN, PLACEMENT PLANS, TEMPORARY AND PERMANENT BRACING DETAILS, TRUSS-TO-TRUSS CONNECTIONS, AND UPLIFT AND REACTION LOADS FOR ALL BEARING LOCATIONS. TRUSS ENGINEERING IS THE RESPONSIBILITY OF THE TRUSS MANUFACTURER AND SHALL BE SIGNED & SEALED BY THE MANUFACTURER'S DESIGN ENGINEER. IT IS THE BUILDER'S RESPONSIBILITY TO VERIFY THE TRUSS DESIGNER'S DESIGN SATISFIES ALL THE ABOVE REQUIREMENTS AND TO SELECT UPLIFT CONNECTIONS BASED ON TRUSS ENGINEERING UPLIFT AND PROVIDE FOOTINGS FOR INTERIOR BEARING WALLS. BUILDER IS TO FURNISH TRUSS ENGINEERING TO WIND LOAD ENGINEER FOR REVIEW OF TRUSS REACTIONS ON THE BUILDING STRUCTURE. STRAP 2x6 RAFTERS WITH MIN. UPLIFT CONNECTION 415LB EACH END. 2x8 RAFTERS 700 LB EACH END.

SITE PREPARATION: SITE ANALYSIS AND PREPARATION IS NOT PART OF THIS PLAN

FOUNDATION: CONFIRM THAT THE FOUNDATION DESIGN & SITE CONDITIONS MEET GRAVITY LOAD REQUIREMENTS (ASSUME 1500 PSF BEARING CAPACITY UNLESS VISUAL OBSERVATION OR SOILS TEST PROVES OTHERWISE)

CONCRETE: MINIMUM COMPRESSIVE STRENGTH OF CONCRETE AT 28 DAYS, F_c = 2500 PSI.

WELDED WIRE REINFORCED SLAB: 6" x 6" W14 x W14, F_y = 80ksi, WELDED WIRE REINFORCEMENT FABRIC (W.W.R.) CONFORMING TO ASTM A185, LOCATED IN MIDDLE OF THE SLAB, SUPPORTED WITH APPROVED MATERIALS OR SUPPORTS AT SPACINGS NOT TO EXCEED 3'.

FIBER CONCRETE SLAB: CONCRETE SLABS ON GROUND CONTAINING SYNTHETIC FIBER REINFORCEMENT. FIBER LENGTH 1/2" INCH TO 2" INCHES. DOSAGE AMOUNTS FROM 0.75 TO 1.5 POUNDS PER CUBIC YARD PER THE MANUFACTURER'S RECOMMENDATIONS. FIBERS TO COMPLY WITH ASTM C-1116. SUPPLIER TO PROVIDE ASTM C-1116 CERTIFICATION OF COMPLIANCE WHEN REQUESTED BY BUILDING OFFICIAL.

CONTROL JOINTS: WHERE SPECIFIED, SAWN CONTROL JOINTS IN SLAB-ON-GRADE SHALL BE CUT IN ACCORDANCE WITH ACI 302. JOINTS SHALL BE CUT WITHIN 12 HOURS OF SLAB PLACEMENT. THE LENGTH / WIDTH RATIOS OF SLAB AREAS SHALL NOT EXCEED 1.5 AND TYPICAL SPACING OF CUTS TO BE 12FT. DO NOT CUT WWM OR REINFORCING STEEL. (RECOMMENDED LOCATION OF CONTROL JOINTS IS SUBJECT TO OWNER AND CONTRACTOR'S APPROVAL. THE CONTROL JOINTS ARE NOT INTENDED TO PREVENT CRACKS BUT RATHER TO ENCOURAGE THE SLAB TO CRACK ON A GIVEN LINE.)

REBAR: ASTM A 615, GRADE 40, DEFORMED BARS, F_y = 40 KSI. ALL LAP SPLICES 40" DB (25" FOR #5 BARS), UNO. ALL REINFORCEMENT SHALL BE DETAILED AND PLACED IN ACCORDANCE WITH ACI 315-86, U.N.O.

ROOF SHEATHING: ALL ROOFS ARE HORIZONTAL. DIAPHRAGMS: 7/16" OSB SHEATHING, UNBLOCKED, APPLIED PERPENDICULAR TO FRAMING, OVER A MINIMUM OF 3 FRAMING MEMBERS, WITH PANEL EDGES STAGGERED.

STRUCTURAL CONNECTORS: MANUFACTURERS AND PRODUCT NUMBER FOR CONNECTORS, ANCHORS, AND REINFORCEMENT ARE LISTED FOR EXAMPLE NOT ENDORSEMENT. AN EQUIVALENT DEVICE OF THE SAME OR OTHER MANUFACTURER CAN BE SUBSTITUTED FOR ANY DEVICES LISTED IN THE EXAMPLE TABLES AS LONG AS IT MEETS THE REQUIRED LOAD CAPACITIES. MANUFACTURER'S INSTALLATION INSTRUCTIONS MUST BE FOLLOWED TO ACHIEVE RATED LOADS.

ANCHOR BOLTS: A-307 ANCHOR BOLTS WITH MINIMUM EMBEDMENT AS SPECIFIED IN DRAWINGS BUT NO LESS THAN 7" IN CONCRETE OR REINFORCED BOND BEAM OR 10" IN GROUTED CMU.

BUILDER'S RESPONSIBILITY:

THE BUILDER AND OWNER ARE RESPONSIBLE FOR THE FOLLOWING, WHICH ARE SPECIFICALLY NOT PART OF THE WIND LOAD ENGINEER'S SCOPE OF WORK.

CONFIRM SITE CONDITIONS, FOUNDATION BEARING CAPACITY, GRADE AND BACKFILL HEIGHT, WIND SPEED AND DEBRIS ZONE, AND FLOOD ZONE.

PROVIDE MATERIALS AND CONSTRUCTION TECHNIQUES WHICH COMPLY WITH FBCR REQUIREMENTS FOR THE STATED WIND VELOCITY AND DESIGN PRESSURES.

PROVIDE A CONTINUOUS LOAD PATH FROM TRUSSES TO FOUNDATION. IF YOU BELIEVE THE PLAN OMMITS A CONTINUOUS LOAD PATH CONNECTION, CALL THE WIND LOAD ENGINEER IMMEDIATELY.

VERIFY THE TRUSS MANUFACTURER'S SEALED ENGINEERING INCLUDES TRUSS DESIGN, PLACEMENT PLANS, TEMPORARY AND PERMANENT BRACING DETAILS, TRUSS-TO-TRUSS CONNECTIONS, AND UPLIFT AND REACTION LOADS FOR ALL BEARING LOCATIONS.

ROOF SYSTEM DESIGN:

THE SEAL ON THESE PLANS FOR COMPLIANCE WITH FBCR, IS BASED ON REACTIONS, UPLIFTS, AND BEARING LOCATIONS IN TRUSS ENGINEERING SUBMITTED TO THE WIND LOAD ENGINEER. IT IS THE RESPONSIBILITY OF THE BUILDER TO CHECK ALL DETAILS OF THE COMPLETE ROOF SYSTEM DESIGN SUBMITTED BY THE TRUSS MANUFACTURER AND HAVE IT SIGNED, AND SEALED BY A DESIGN PROFESSIONAL FOR CORRECT APPLICATION OF FBCR REQUIRED LOADS AND ANY SPECIAL LOADS. THE BUILDER IS RESPONSIBLE TO REVIEW EACH INDIVIDUAL TRUSS MEMBER AND THE TRUSS ROOF SYSTEM AS A WHOLE AND TO PROVIDE RESTRAINT FOR ANY LATERAL BRACING. THE BUILDER SHOULD USE CARE CHECKING THE ROOF DESIGN BECAUSE THE WIND LOAD ENGINEER IS SPECIFICALLY NOT RESPONSIBLE FOR THE TRUSS LAYOUT WHICH WAS CREATED BY THE TRUSS MANUFACTURER AND THE TRUSS DESIGNER. ALSO DESIGNER RESPONSIBILITY FOR THE LAYOUT PER NOTES ON THEIR SEALED TRUSS SHEETS.

Blake Construction

Roberts, Peace Res.

PROJECT ADDRESS:
Lot 8 Blackberry Farms
Columbia County, FL

DIMENSIONS:
Stated dimensions supersede scaled dimensions. Refer all questions to Mark Discoway, P.E. for resolution. Do not proceed without clarification.

COPYRIGHTS AND PROPERTY RIGHTS:
Mark Discoway, P.E. hereby expressly reserves its common law copyrights and property right in these instruments of service. This document is not to be reproduced, altered or copied in any form or manner without first the express written permission and consent of Mark Discoway.

CERTIFICATION: I hereby certify that I have examined this plan, and that the applicable portions of the plan, relating to wind engineering comply with the 6th Edition Florida Building Code Residential (2017) to the best of my knowledge.

MARK DISCOWAY P.E. 53915

THIS PDF HAS DIGITAL SIGNATURE AND ELECTRONIC SEAL. PRINTED COPIES ARE NOT CONSIDERED SIGNED OR SEALED. YOU MUST VERIFY SIGNATURE ON THIS PDF. [CLICK HERE TO VERIFY.](#)

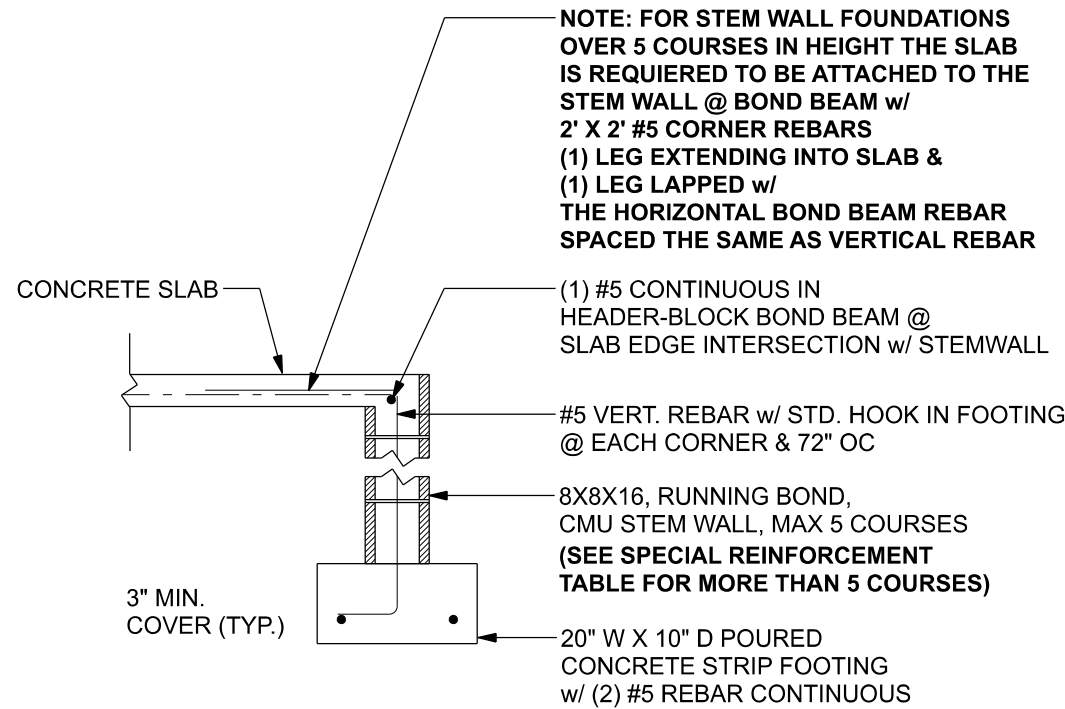
FLORIDA
No. 53915
P.E.
STATE OF FLORIDA

Wednesday, November 16, 2020

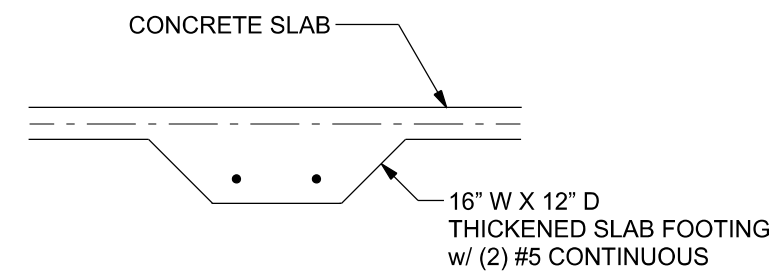
Mark Discoway P.E.
163 SW Midtown Place
Suite 103
Lake City, Florida 32025
386.754.5419
discowaydesign@gmail.com

JOB NUMBER:
200771

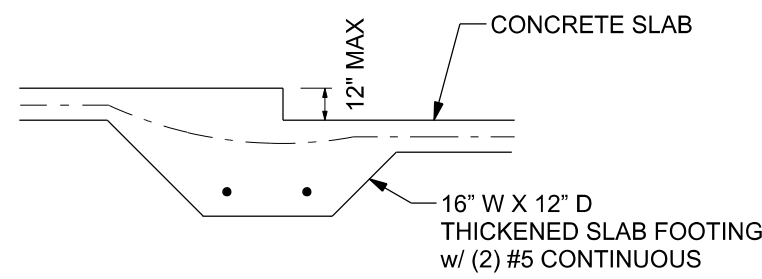
S-1
OF 3 SHEETS



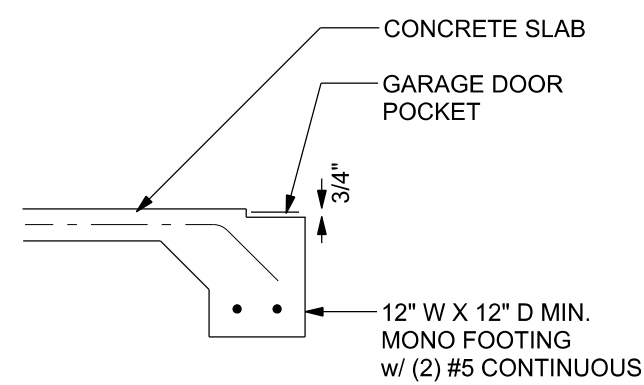
F1 S-2 OPTIONAL STEM WALL FOOTING
SCALE: 1/2" = 1'-0"



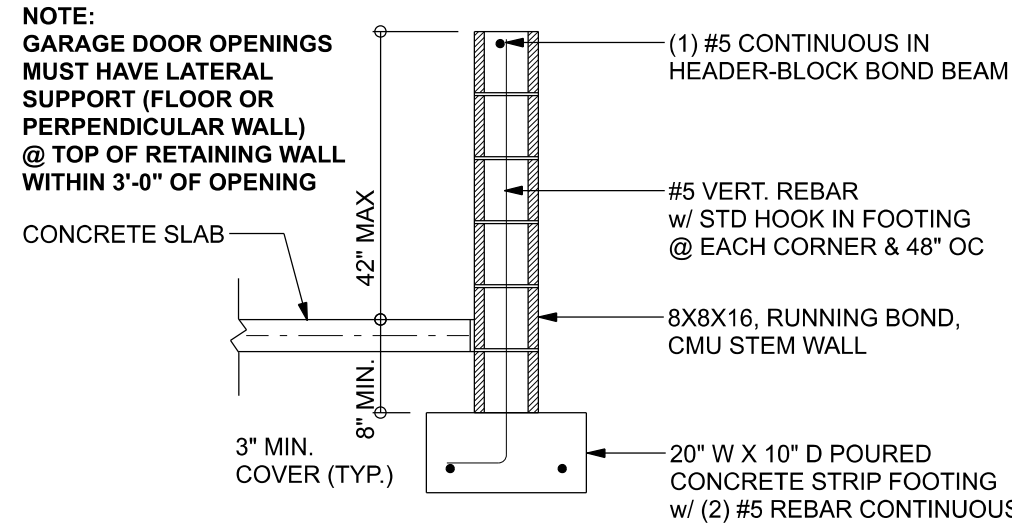
F2 S-2 INTERIOR BEARING FOOTING
SCALE: 1/2" = 1'-0"



F3 S-2 INTERIOR BEARING STEP FOOTING
SCALE: 1/2" = 1'-0"



F5 S-2 GARAGE DOOR POCKET FOOTING
SCALE: 1/2" = 1'-0"



F4 S-2 OPTIONAL STEM WALL CURB FOOTING
SCALE: 1/2" = 1'-0"

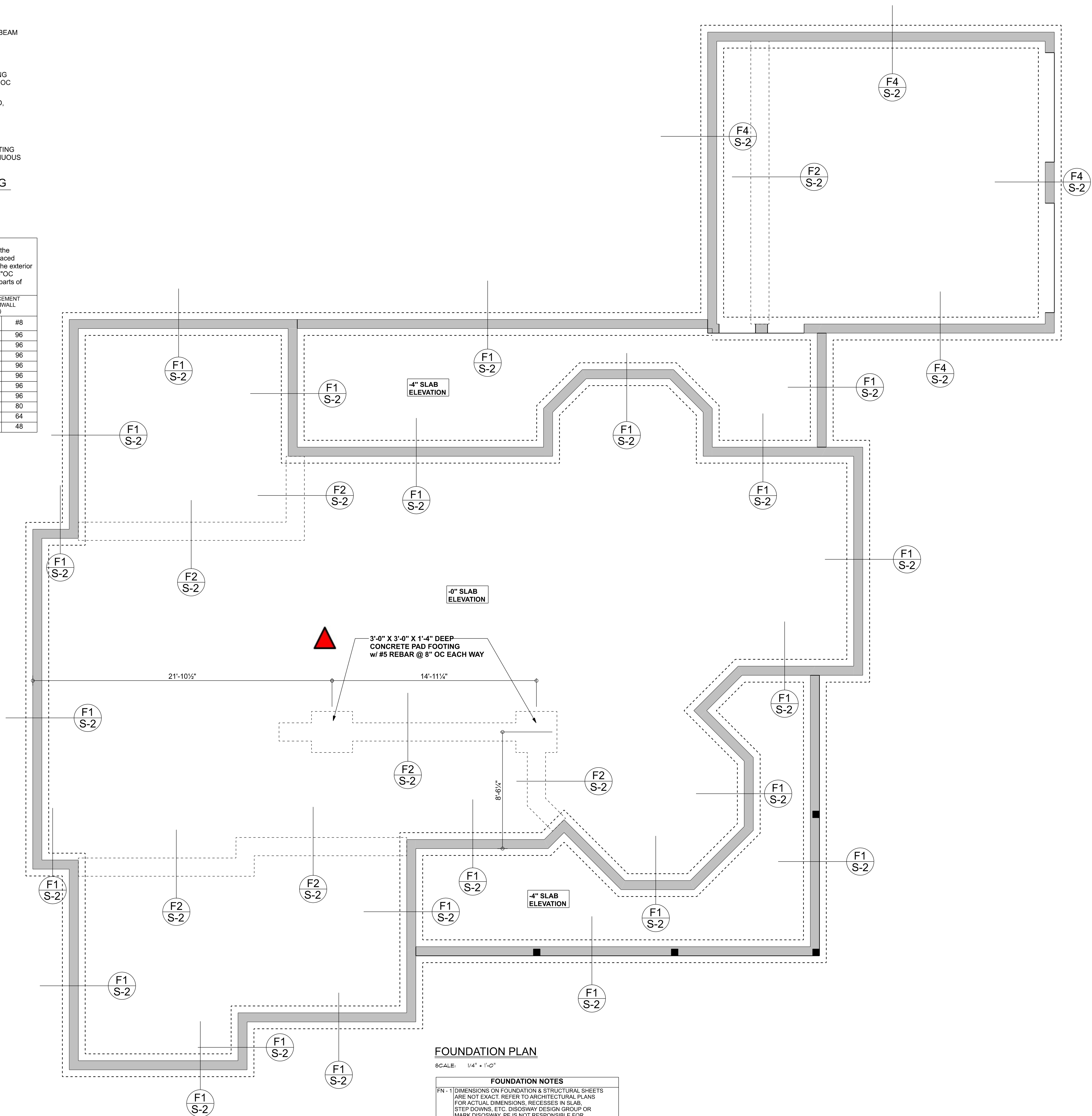
TALL STEM WALL TABLE:
The table assumes 40 ksi for #5 rebar and 60 ksi for #7 & #8 rebar with 6" hook in the footing and bent 24" into the reinforced slab at the top. The vertical steel is to be placed toward the tension side of the CMU wall (away from the soil pressure, within 2" of the exterior side of the wall). If the wall is over 8' high, add Duowall ladder reinforcement at 16"OC vertically or a horizontal bond beam with #5 continuous at mid height. For higher parts of the wall 12" CMU may be used with reinforcement as shown in the table below.

| STEM WALL HEIGHT (FEET) | UNBALANCED BACKFILL HEIGHT | VERTICAL REINFORCEMENT FOR 8" CMU STEM WALL (INCHES O.C.) | | VERTICAL REINFORCEMENT FOR 12" CMU STEM WALL (INCHES O.C.) | |
|-------------------------|----------------------------|---|----|--|----|
| | | #5 | #8 | #5 | #8 |
| 3.3 | 3.0 | 96 | 96 | 96 | 96 |
| 4.0 | 3.7 | 96 | 96 | 96 | 96 |
| 4.7 | 4.3 | 88 | 96 | 96 | 96 |
| 5.3 | 5.0 | 56 | 96 | 96 | 96 |
| 6.0 | 5.7 | 40 | 80 | 80 | 96 |
| 6.7 | 6.3 | 32 | 56 | 80 | 96 |
| 7.3 | 7.0 | 24 | 40 | 56 | 80 |
| 8.0 | 7.7 | 16 | 32 | 48 | 64 |
| 8.7 | 8.3 | 8 | 24 | 32 | 48 |
| 9.3 | 9.0 | 8 | 16 | 24 | 40 |

MASONRY NOTE:
MASONRY CONSTRUCTION AND MATERIALS FOR THIS PROJECT SHALL CONFORM TO ALL REQUIREMENTS OF "SPECIFICATION FOR MASONRY STRUCTURES" (ACI 530.1/ASCE 6/TMS 602). THE CONTRACTOR AND MASON MUST IMMEDIATELY BEFORE PROCEEDING, NOTIFY THE ENGINEER OF ANY CONFLICTS BETWEEN ACI 530.1-02 AND THESE DESIGN DRAWINGS. ANY EXCEPTIONS TO ACI 530.1-02 MUST BE APPROVED BY THE ENGINEER IN WRITING.

| ACI 530.1-02 Section | Specific Requirements |
|--|---|
| 1.4A Compressive strength | 8" block bearing walls Fm = 1500 psi |
| 2.1 Mortar | ASTM C 270, Type N, UNO |
| 2.2 Grout | ASTM C 476, admixtures require approval |
| 2.3 CMU standard | ASTM C 90-02, Normal weight, Hollow, medium surface finish, 8"x8"x16" running bond and 12"x12" or 16"x16" column block |
| 2.3 Clay brick standard | ASTM C 216-02, Grade SW, Type FBS, 5.5"x2.75"x11.5" |
| 2.4 Reinforcing bars, #3 - #11 | ASTM 615, Grade 40, Fy = 40 ksi, Lap splices min 40 bar dia. (25" for #5) |
| 2.4F Coating for corrosion protection | Anchors, sheet metal ties completely embedded in mortar or grout. ASTM A525, Class G60, 0.60 oz/lb or 304SS |
| 2.4F Coating for corrosion protection | Joint reinforcement in walls exposed to moisture or wire ties, anchors, sheet metal ties not completely embedded in mortar or grout. ASTM A153, Class B2, 1.50 oz/lb or 304SS |
| 3.3.E.2 Pipes, conduits, and accessories | Any not shown on the project drawings require engineering approval. |
| 3.3.E.7 Movement joints | Contractor assumes responsibility for type and location of movement joints if not detailed on project drawings. |

BOTTOM OF EXTERIOR FOOTINGS SHALL BE A MINIMUM OF 12" BELOW UNDISTURBED SOIL OR ENGINEERED FILL PER FBC 2017-RES. SECTION R403.1.4



FOUNDATION NOTES

- FN - 1 DIMENSIONS ON FOUNDATION & STRUCTURAL SHEETS ARE NOT EXACT. REFER TO ARCHITECTURAL PLANS FOR ACTUAL DIMENSIONS, RECESSES IN SLAB, STEP DOWNS, ETC. DISOWAY DESIGN GROUP OR MARK DISOWAY, P.E. IS NOT RESPONSIBLE FOR DIMENSION ERRORS ON THIS PLAN.
- CONTRACTOR SHALL VERIFY NEED FOR INTERIOR BEARING
- FN - 2 IN ALL AREAS BY REVIEWING THE ROOF TRUSS PLAN (BY THE SUPPLIER) BEFORE FINALIZING FOUNDATION PLAN
- FN - 3 THE SLAB SHALL BE: 4" CONCRETE SLAB REINFORCED w/ 6X6-1.4/1.4 WELDED WIRE MESH PLACED ON CHAIRS @ 1/2" DEPTH OR FIBER MESH CONCRETE, 5-MIL POLY VAPOR BARRIER w/ 6" LAPS SEALED w/ POLY TAPE OVER TERMIT- TREATED & COMPACTED FILL

Blake Construction

Roberts, Peace Res.

PROJECT ADDRESS:
Lot 8 Blackberry Farms
Columbia County, FL

DIMENSIONS:
Stated dimensions supersede scaled dimensions. Refer all questions to Mark Disoway, P.E. for resolution. Do not proceed without clarification.

COPYRIGHTS AND PROPERTY RIGHTS:
Mark Disoway, P.E. hereby expressly reserves its common law copyrights and property right in these instruments of service. This document is not to be reproduced, altered or copied in any form or manner without first the express written permission and consent of Mark Disoway.

CERTIFICATION: I hereby certify that I have examined this plan, and that the applicable portions of the plan, relating to wind engineering comply with the 6th Edition Florida Building Code Residential (2017) to the best of my knowledge.

LIMITATION: This design is valid for one building, at specified location.

MARK DISOWAY P.E. 53915

THIS PDF HAS DIGITAL SIGNATURE AND ELECTRONIC SEAL. PRINTED COPIES ARE NOT CONSIDERED SIGNED OR SEALED. YOU MUST VERIFY SIGNATURE ON THIS PDF. [CLICK HERE TO VERIFY.](#)



Wednesday, November 18, 2020

Mark Disoway P.E.
163 SW Midtown Place
Suite 103
Lake City, Florida 32025
386.754.5419
disowaydesign@gmail.com

JOB NUMBER:
200771

S-2
OF 3 SHEETS

