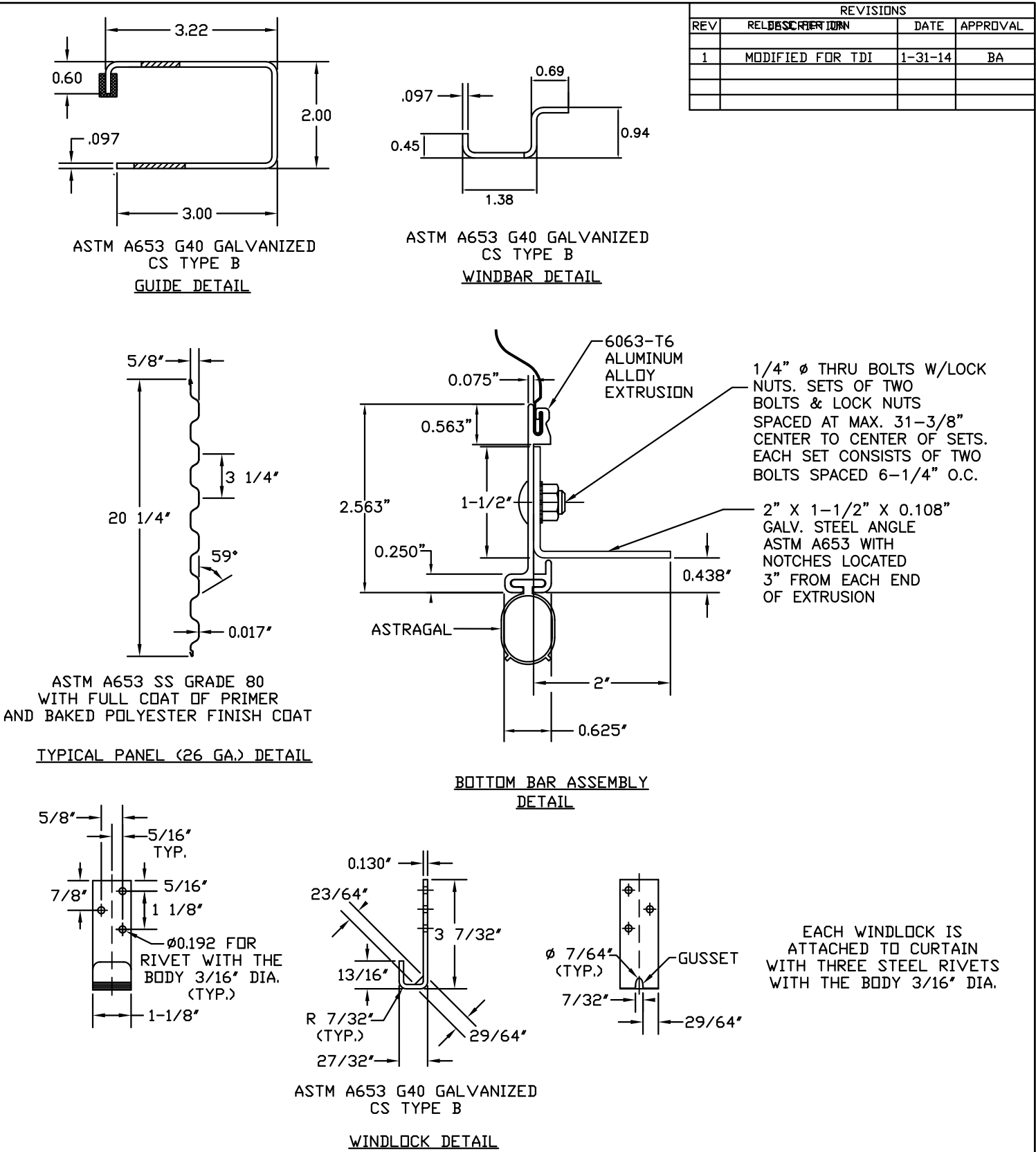
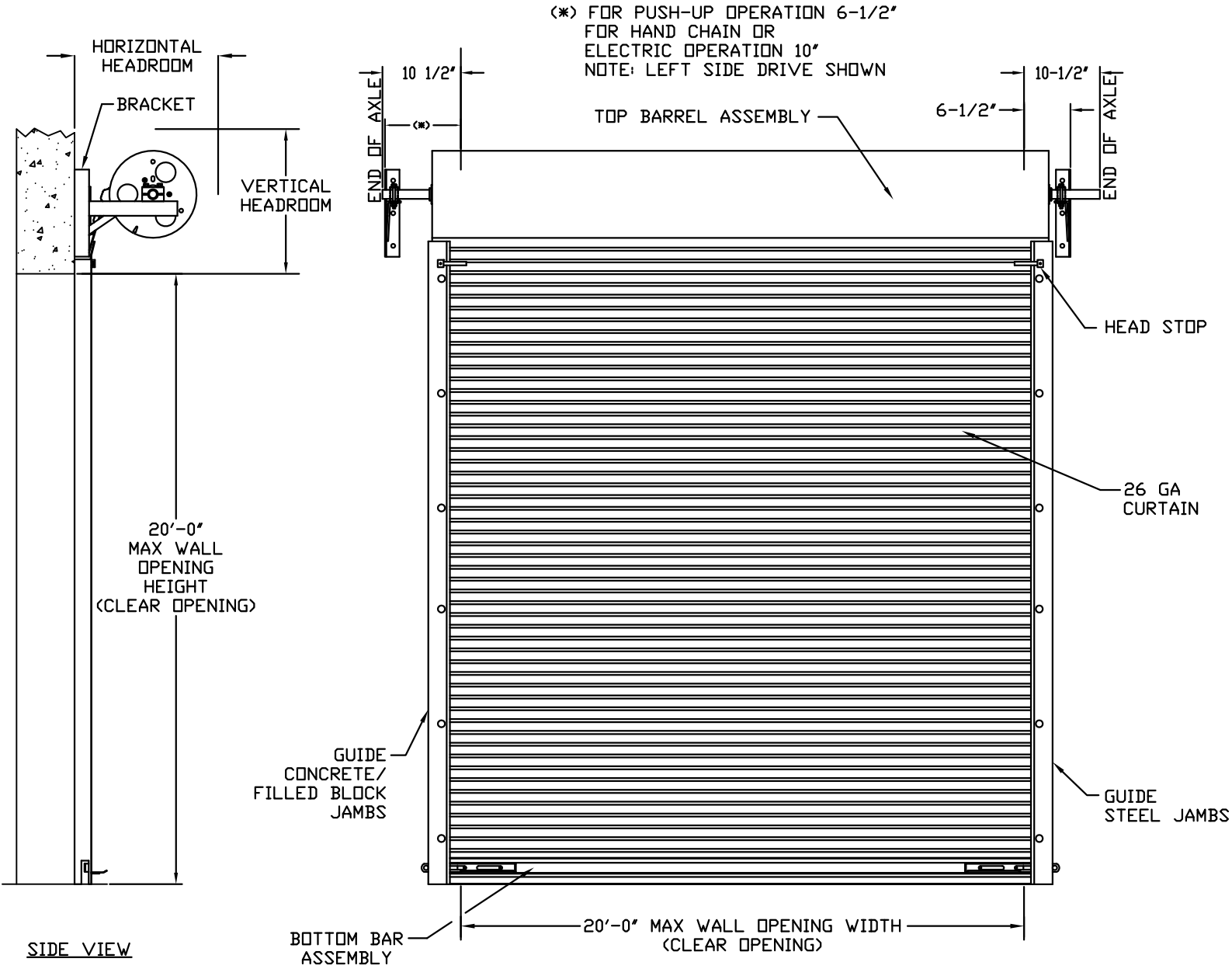
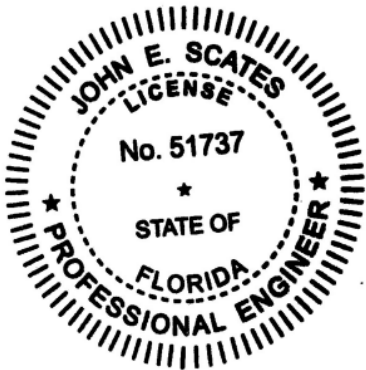


MINIMUM HEADROOM DIMENSIONS						
OPENING HEIGHT	THRU 8'-0"	OVER 8'-0" THRU 10'-0"	OVER 10'-0" THRU 14'-0"	OVER 14'-0" THRU 16'-0"	OVER 16'-0" THRU 18'-0"	OVER 18'-0" THRU 20'-0"
VERTICAL HEADROOM	18"	20"	21"	22"	23"	24"
HORIZONTAL HEADROOM	19"	21"	22"	23"	24"	25"



REVISIONS			
REV	DESCRIPTION	DATE	APPROVAL
1	MODIFIED FOR TDI	1-31-14	BA




JOHN E. SCATES PE
3121 FAIRGATE
CARROLTON, TX 75007

FL PE 51737
TX PE 56308/F-2203

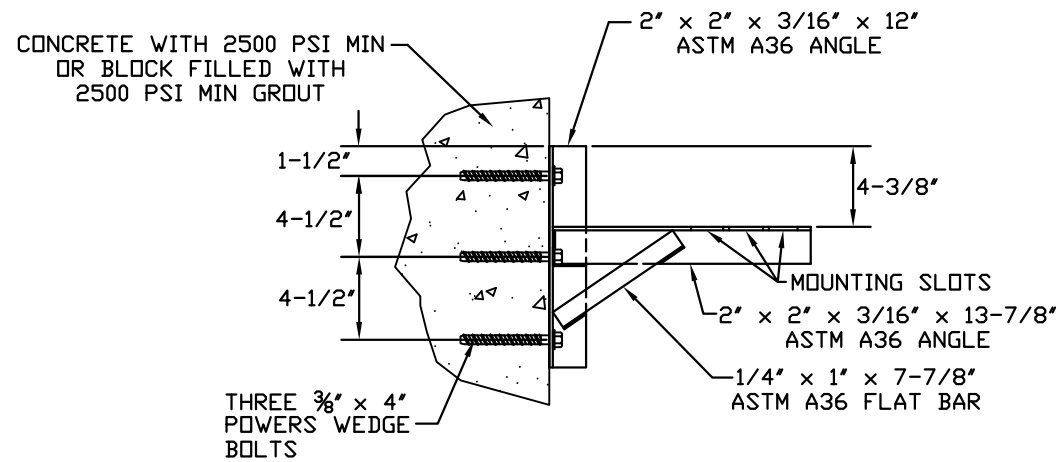
THESE CONFIDENTIAL DOCUMENTS SUBMITTED BY DBCI CONTAIN INFORMATION OF A PROPRIETARY NATURE AND MAY NOT BE REPRODUCED OR USED TO MANUFACTURE ANYTHING IN PART OR IN WHOLE FOR ANY PURPOSE OTHER THAN THAT WHICH IS NECESSARY FOR PREPARATION OF BIDS OR ENGINEERING WITHOUT THE EXPRESS PERMISSION OF DBCI WHICH MAY RECALL DOCUMENTS AT ANY TIME.

PROFESSIONAL ENGINEERS' SEAL PROVIDED ONLY FOR VERIFICATION OF WINDLOAD CONSTRUCTION DETAILS.

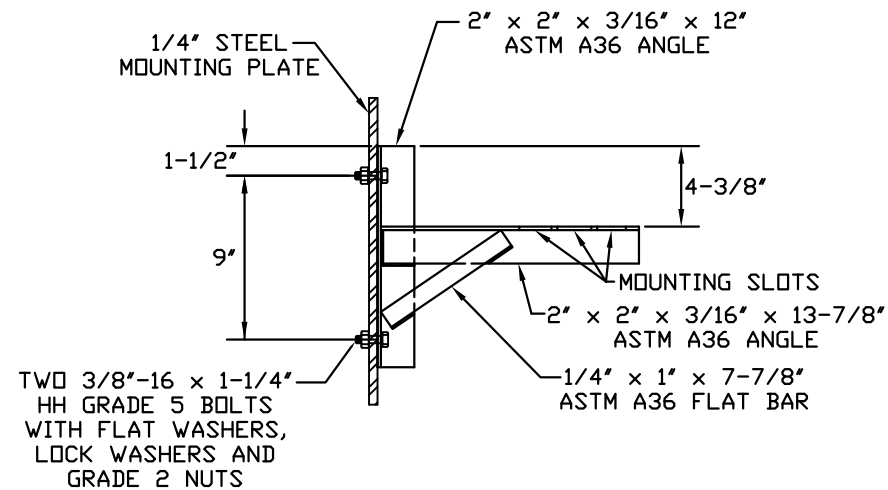
Digitally signed by John E. Scates, P.E.
Date: 2017.04.08 18:35:13 -05'00'

PART NUMBER: N/A		 <div>DOORS & BUILDING COMPONENTS DOUGLASVILLE, GA CHANDLER, AZ HOUSTON, TX ©2000 DBCI ALL RIGHTS RESERVED</div>	
MATERIAL: N/A			
APPLIED FINISH: N/A		26 GA. WIND LOAD, MAX. SIZE 20'-0" x 20'-0"	
UNIT OF MEASURE: N/A			
APPROVALS		SERIES 5000 DOOR ASSEMBLY	
DATE:			
DRAWN	BRAY ALLEN	11/14/08	
CHECKED	BRAY ALLEN	11/14/08	
APPROVED			
SIZE	DRAWING NUMBER	REV.	
B	-5000-08-0001	1	
SCALE:	NONE	SHEET 1 OF 2	

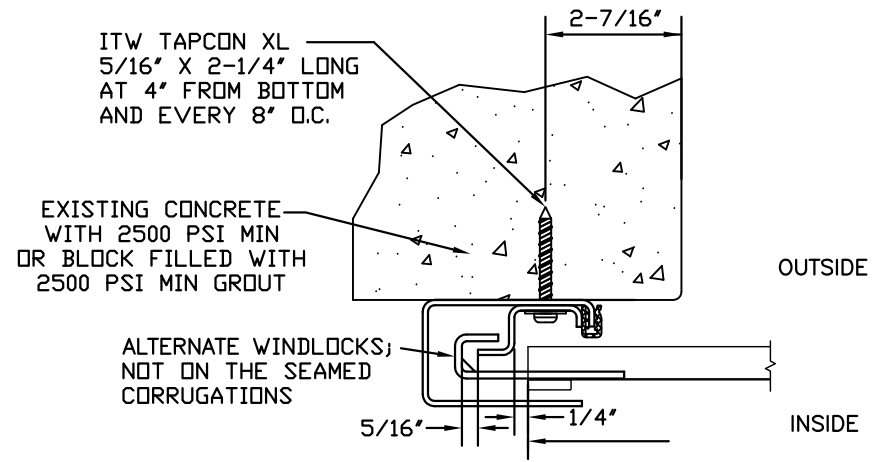
SERIES 5000 DOOR ASSEMBLY



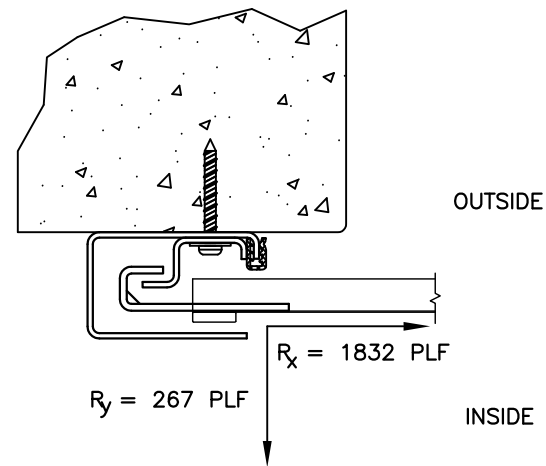
DOOR MOUNTING BRACKET TO MASONRY DETAIL



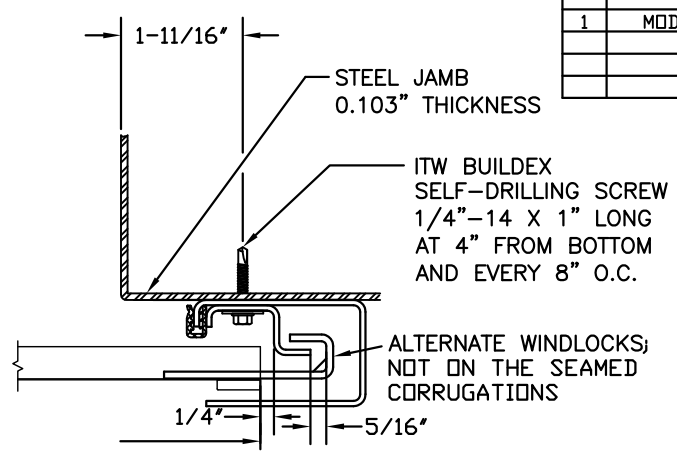
DOOR MOUNTING BRACKET TO STEEL DETAIL



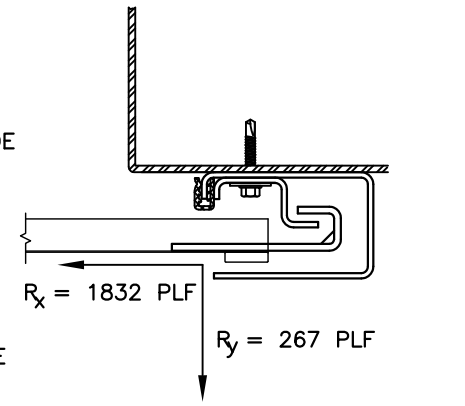
FOR MASONRY JAMBS:
CURTAIN WIDTH=OPENING WIDTH+6"
CONCRETE/FILLED BLOCK JAMBS
LH GUIDE MOUNT SHOWN



CONCRETE/FILLED BLOCK JAMBS
LH GUIDE MOUNT SHOWN



FOR STEEL JAMBS:
CURTAIN WIDTH=OPENING WIDTH+4.5"
STEEL JAMBS
RH GUIDE MOUNT SHOWN

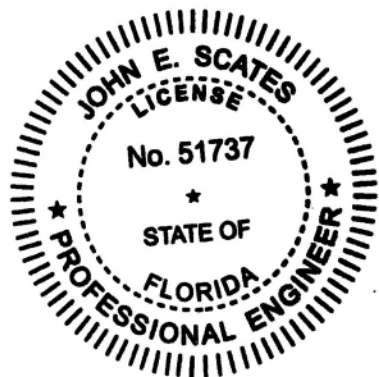


STEEL JAMBS
RH GUIDE MOUNT SHOWN

SUPERIMPOSED LOAD DIAGRAM

GENERAL NOTES:

1. THIS DOOR EVALUATED IN ACCORDANCE WITH TEST METHODS ASTM E330-02 AND ANSI/DASMA 108-05.
2. THIS PRODUCT EVALUATION IS GENERIC. IT DOES NOT INCLUDE INFORMATION PREPARED FOR A SPECIFIC SITE.
3. IT IS THE CONTRACTOR'S RESPONSIBILITY TO VERIFY THE STRUCTURAL CAPACITY OF THE SUBSTRATE (JAMB) TO RESIST THE LOADS IMPOSED BY THE ROLL-UP DOOR.
4. ALL DOOR JAMBS (MASONRY OR STEEL) MUST BE DESIGNED TO RESIST THE FORCES SHOWN IN SUPERIMPOSED LOAD DIAGRAM.
5. THE DOOR ASSEMBLY SHALL BE INSTALLED IN ACCORDANCE WITH THE MANUFACTURER'S INSTALLATION INSTRUCTIONS.




JOHN E. SCATES PE
3121 FAIRGATE
CARROLTON, TX 75007

FL PE 51737
TX PE 56308/F-2203

THESE CONFIDENTIAL DOCUMENTS SUBMITTED BY DBCI CONTAIN INFORMATION OF A PROPRIETARY NATURE AND MAY NOT BE REPRODUCED OR USED TO MANUFACTURE ANYTHING IN PART OR IN WHOLE FOR ANY PURPOSE OTHER THAN THAT WHICH IS NECESSARY FOR PREPARATION OF BIDS OR ENGINEERING WITHOUT THE EXPRESS PERMISSION OF DBCI WHICH MAY RECALL DOCUMENTS AT ANY TIME.

PART NUMBER: N/A	
MATERIAL: N/A	
APPLIED FINISH: N/A	
UNIT OF MEASURE: N/A	
APPROVALS	DATE
DRAWN BRAY ALLEN	11/14/08
CHECKED BRAY ALLEN	11/14/08
APPROVED	

		DOORS & BUILDING COMPONENTS DOUGLASVILLE, GA CHANDLER, AZ HOUSTON, TX ©2000 DBCI ALL RIGHTS RESERVED	
26 GA. WIND LOAD, MAX. SIZE 20'-0" x 20'-0"			
SERIES 5000 DOOR ASSEMBLY			
SIZE B	DRAWING NUMBER -5000-08-0001	REV.	
SCALE NONE		SHEET 2	OF 2

REVISIONS			
REV	DESCRIPTION	DATE	APPROVAL
1	MODIFIED FOR TDI	1-31-14	BA

DOOR SCHEDULE

DOOR WIDTH	DESIGN PRESSURE (PSF)
≤ 10'-0"	+43.7
	-50.0
11'-0"	+39.9
	-45.7
12'-0"	+36.8
	-42.1
13'-0"	+34.1
	-39.0
14'-0"	+31.7
	-36.3
15'-0"	+29.7
	-34.0
16'-0"	+28.0
	-32.0
17'-0"	+25.4
	-29.1
18'-0"	+23.2
	-26.6
19'-0"	+21.3
	-24.4
20'-0"	+19.7
	-22.6