

- EXTERIOR FINISH MATERIALS:**
- 1 CONT. RIDGE VENT TO MATCH ROOFING
  - 2 FINISH ROOFING AS SELECTED BY OWNER
  - 3 MTL. FLASHING ON 1X6 CYFRESS6 FASCIA
  - 4 PORCH BEAM - SEE PLANS FOR SIZE
  - 5 HARDYBOARD BOARD & BATTEN SIDING FINISH AS SELECTED BY THE OWNER - PAINTED FINISH
  - 6 CONCRETE PORCH DECK w/ WOOD FLOAT FINISH & TOILED EDGES
  - 7 SINGLE HUNG ALUMINUM WINDOWS w/ DBL. GLAZING, AS SELECTED BY OWNER
  - 8 HARDYBOARD SIDING, STYLE & COLOR AS SELECTED BY THE OWNER
  - 9 PORCH POST - SEE PLANS FOR DETAIL
  - 10 F/G ENTRY FRENCH DOORS w/ ART GLASS INSERTS
  - 11 RAISED PANEL F/G GARAGE DOORS
- NOTE 1 1 1**  
ROOF SHINGLES SHALL BE AS MANUFACTURED BY GAF MATERIALS CORP. OF THE FOLLOWING MODELS:  
ROYAL SOVEREIGN COUNTRY MANOR MARQUIS COUNTRY ESTATES WEAVER MAX TIMBERLINE 30 TIMBERLINE SELECT 40 GRAND CANYON SENTINEL GRAND SEQUOIA
- THESE SHINGLES MEET THE REQUIREMENTS OF ASTM D-316 TYPE 1 MODIFIED TO 120 MPH WINDS & FBC 145 IBC USING 4 NAILS/SHINGLE

**TEMPERED GLASS NOTES:**

- THE FOLLOWING SHALL BE CONSIDERED SPECIFIC HAZARDOUS LOCATIONS FOR THE PURPOSES OF GLAZING:
- 1 GLAZING IN SLIDING DOORS AND FIXED AND SLIDING PANELS OF SLIDING (PATIO) DOOR ASSEMBLIES
  - 2 GLAZING IN DOORS AND WALLS OF ENCLOSURES FOR HOT TUBS, WHIRLPOOLS, SAUNAS, STEAM ROOMS, BATHUBS, SHOWERS AND OTHER SUCH FACILITIES
  - 3 GLAZING IN ENCLOSURES FOR SWIMMING POOLS, HOT TUBS, SAUNAS, STEAM ROOMS, BATHUBS, SHOWERS AND OTHER SUCH FACILITIES HORIZONTALY FROM A STANDING OR WALKING SURFACE WITHIN THE ENCLOSURE AND WHERE THE BOTTOM EDGE OF THE EXPOSED GLAZING IS LESS THAN 60 INCHES (1524 MM) MEASURED VERTICALLY, ABOVE SUCH STANDING OR WALKING SURFACES
  - 4 GLAZING IN AN INDIVIDUAL FIXED OR OPERABLE PANEL, OTHER THAN HOSE WHERE THE NEAREST VERTICAL EDGE IS WITHIN A 24-INCH (609 MM) RADIIUS OF THE DOOR IN A CLOSED POSITION AND UNDOE BOTTOM EDGE IS LESS THAN 60 INCHES (1524 MM) ABOVE THE FLOOR OR WALKING SURFACE, EXCEPT GLAZING IN WALLS PERPENDICULAR TO THE PLANE OF THE DOOR IN A CLOSED POSITION IN GROUPS 2 OR WITH DWELLING UNITS IN GROUP 2 SHALL BE SUBJECT TO 1004 FBC (1603 IBC)
  - 5 GLAZING IN AN INDIVIDUAL FIXED OR OPERABLE PANEL, OTHER THAN HOSE LOCATION DESCRIBED IN ITEMS 1 AND 3 ABOVE, THAT MEETS ALL OF THE FOLLOWING CONDITIONS:
    - 41 EXPOSED AREA OF AN INDIVIDUAL PANE GREATER THAN 9 SQ FT (0.84 M<sup>2</sup>).
    - 42 BOTTOM EDGE LESS THAN 18 INCHES (457 MM) ABOVE THE FLOOR
    - 43 TOP EDGE GREATER THAN 36 INCHES (914 MM) ABOVE THE FLOOR
    - 44 ONE OR MORE WALKING SURFACES WITHIN 36 INCHES (914 MM) HORIZONTALY OF THE PLANE OF THE GLAZING



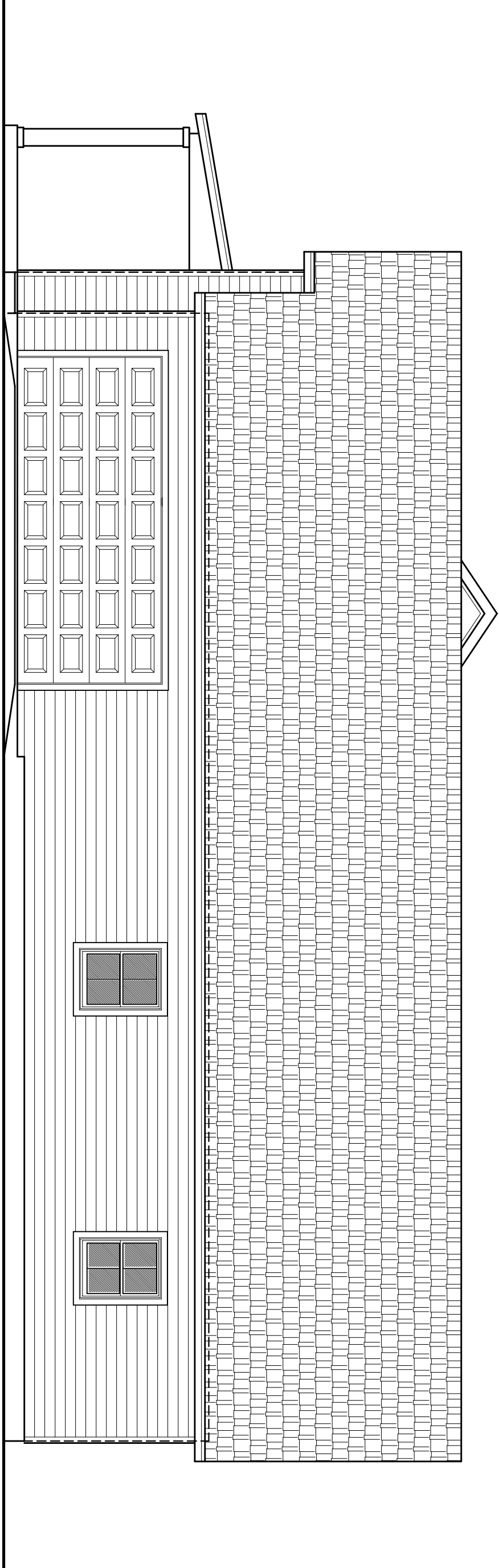
**Front ELEVATION**

SCALE: 1/4" = 1'-0"



**Rear ELEVATION**

SCALE: 3/16" = 1'-0"



**Left Side ELEVATION**

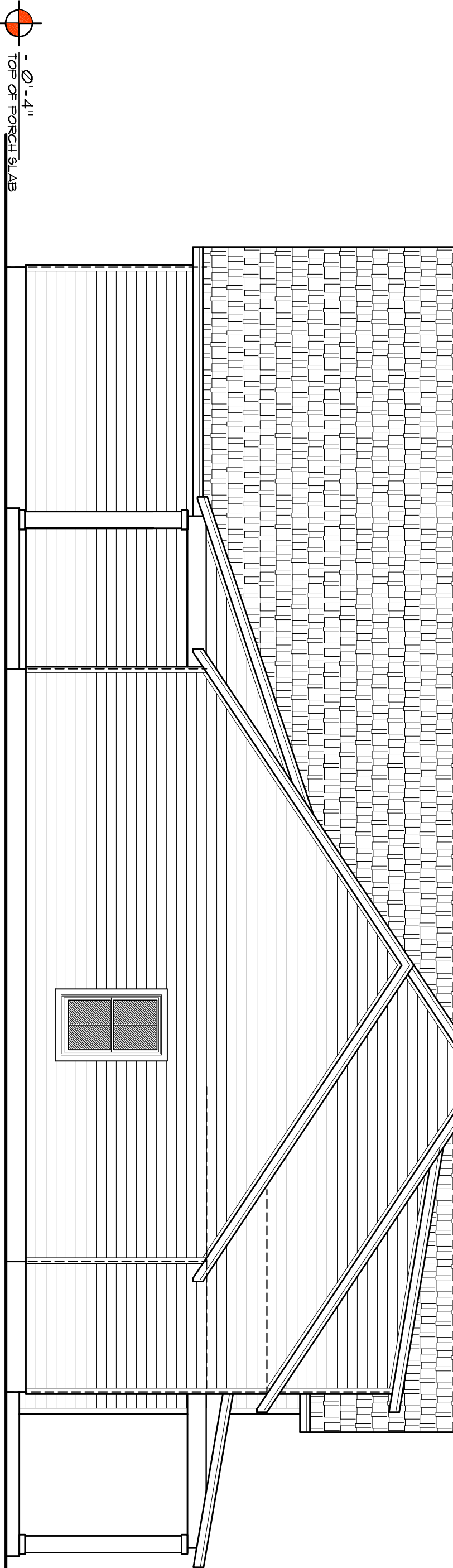
SCALE: 3/16" = 1'-0"

MARK	DESCRIPTION	INSTALLATION	MODEL
20930	SINGLE HUNG ALUM. 64SH w/ NSGL. 64, 45S	1" SCOPING NAILS - 3 PER FLANGE MAX. 18" OC.	SERIES 650 -
30400	SINGLE HUNG ALUM. 64SH w/ NSGL. 64, 45S	1" SCOPING NAILS - 3 PER FLANGE MAX. 18" OC.	SERIES 650 -
21640	SINGLE HUNG ALUM. 64SH w/ NSGL. 64, 45S	1" SCOPING NAILS - 3 PER FLANGE MAX. 18" OC.	SERIES 650 -
21650	SINGLE HUNG ALUM. 64SH w/ NSGL. 64, 45S	1" SCOPING NAILS - 3 PER FLANGE MAX. 18" OC.	SERIES 650 -
30450	SINGLE HUNG ALUM. 64SH w/ NSGL. 64, 45S	1" SCOPING NAILS - 3 PER FLANGE MAX. 18" OC.	SERIES 650 -
30500	SINGLE HUNG ALUM. 64SH w/ NSGL. 64, 45S	1" SCOPING NAILS - 3 PER FLANGE MAX. 18" OC.	SERIES 650 -
215050	SINGLE HUNG ALUM. 64SH w/ NSGL. 64, 45S	1" SCOPING NAILS - 3 PER FLANGE MAX. 18" OC.	SERIES 650 -

ALL WINDOWS ARE INSULATED AND WEATHERSTRIPPED AS MANUFACTURED BY THE HOME PRODUCTS, INC.  
OTHER MANUFACTURERS' PRODUCTS SHALL BE CONSIDERED AS EQUAL IF THEIR WIND DESIGN PERFORMANCE MEETS OR EXCEEDS THESE UNITS  
NOTE: VERIFY ROUGH OPENING WINDOW REQUIREMENTS PRIOR TO CONSTRUCTION

**NOTE 1 1 1**  
EXTERIOR DOORS SHALL MEET OR EXCEED THE WIND RESISTANCE OF THE FOLLOWING PRODUCT:  
SERIES ENTRY 6-8 W/ INSUL. OPAQUE RESIDENTIAL INSULATED STEEL DOOR w/ STEEL FRAME AS MFG'D BY "PREFORM ENTRY SYSTEMS"

**NOTE 1 1 1**  
WINDOW ASSEMBLIES SHALL MEET OR EXCEED THE WIND RESISTANCE OF THE FOLLOWING PRODUCT:  
"THE HOME PRODUCTS, INC." SERIES 450/650 ALUMINUM WINDOWS, SINGLE HUNG, 1, 2 & 3 MULLED UNITS, PICTURE PER ASTM E 283, ASTM E 330 & ASTM E 541



**Right Side ELEVATION**

SCALE: 3/16" = 1'-0"