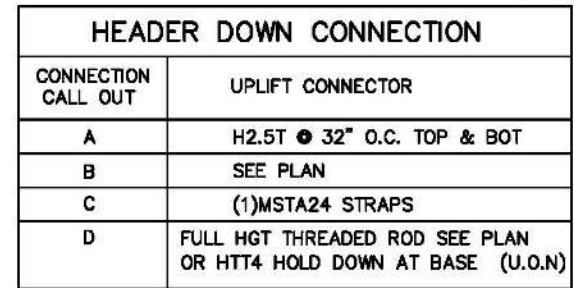


3 TYPICAL PORCH BEAM CONNECTION
S0.1 SCALE: N.T.S.

WHEN NOTED 4
S0.1

WALL ADJ. TO ROOF CONNECTION

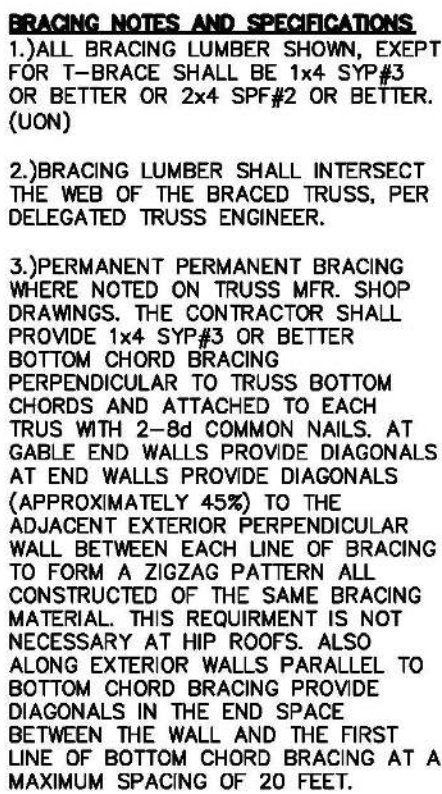
SEE CONSTRUCTION SPECIFICATIONS FOR ROOF AND WALL SHEATHING AND STUD FRAMING.



HEADER UP CONNECTION	
CONNECTION CALL OUT	UPLIFT CONNECTOR
A	LS18 @ 32" O.C.
B	SEE PLAN
C	(2)CS16 STRAPS
D	FULL HGT THREADED ROD SEE PLAN OR HT14 HOLD DOWN AT BASE (U.O.N)

6 TYPICAL SHEARWALL ELEVATION
SO.1 PROVIDE SOLID BLOCKING WITHIN FLOOR SYSTEM AT SW END POSTS.

7 **HEADER TIE DOWN**
THIS DETAIL ONLY APPLIES WHEN NOTED ON PLAN



WHEN NOTED 9 S.O.1 **DECK LEDGER AT OVERFRAME RAFTERS**
USE THIS DETAIL TO FASTEN OVERFRAMED ROOFS, VALLEYS, ETC.

10
S0.1

GABLE END BRACING

NOTES: 1. SPACE GABLE END BRACING @ 4'-6" MAX.

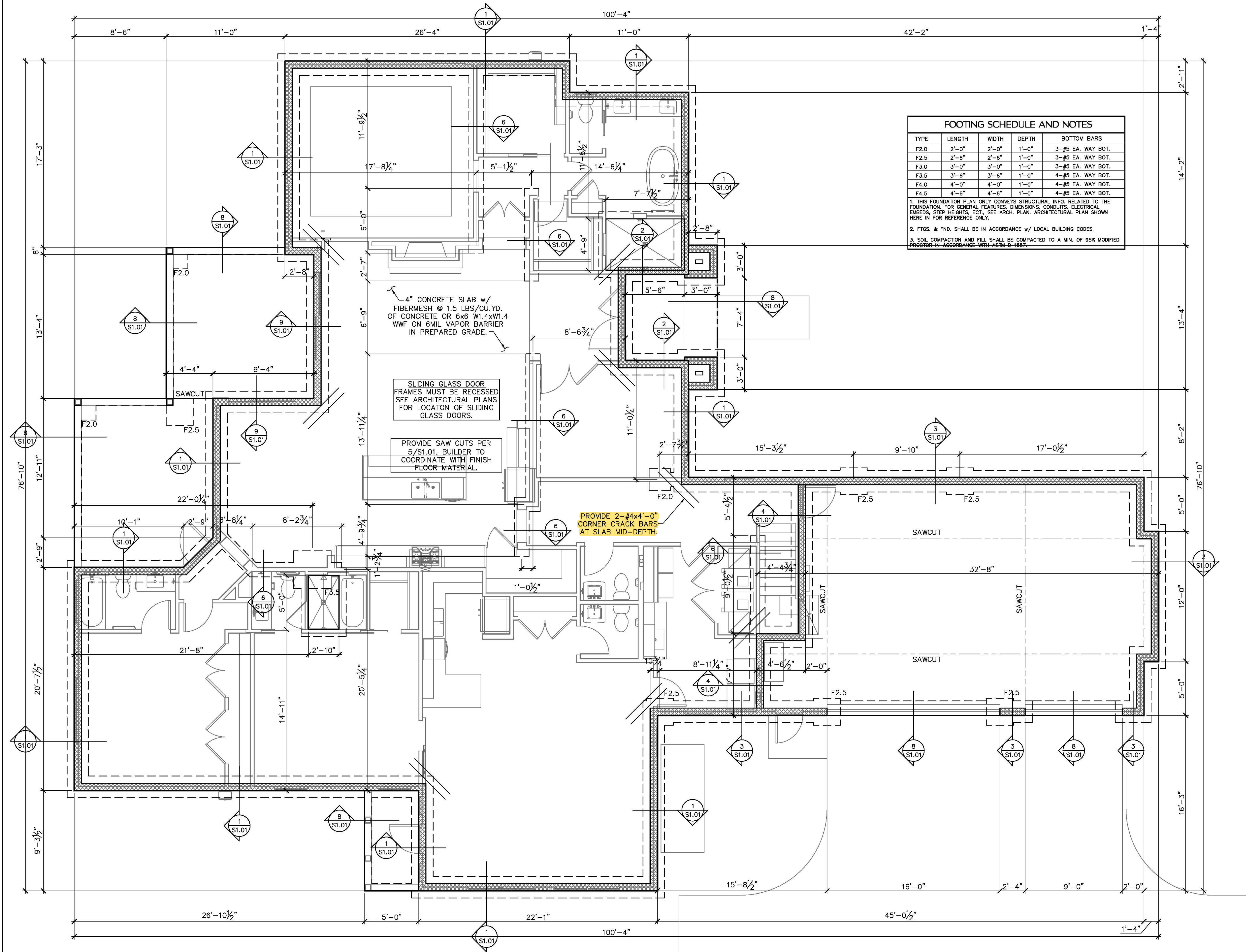
11 PERMANENT TRUSS BRACING
S0.1 SCALE: 3/4" = 1'-0" MIN. 2 PLY



13
S01

14 FULL HEIGHT THREADED ROD
SO.1 ALTERNATE

15 HOLD DOWN ATTACHMENT DETAIL
S0.1



SYMBOLS LEGEND	
	DESIGNATES FOOTING LINE
	DESIGNATES SAWCUT LINE
	STEM WALL
	DESIGNATES SLAB RECESS

FOOTING SCHEDULE AND NOTES				
TYPE	LENGTH	WIDTH	DEPTH	BOTTOM BARS
F2.0	2'-0"	2'-0"	1'-0"	3-#5 EA. WAY BOT.
F2.5	2'-6"	2'-6"	1'-0"	3-#5 EA. WAY BOT.
F3.0	3'-0"	3'-0"	1'-0"	3-#5 EA. WAY BOT.
F3.5	3'-6"	3'-6"	1'-0"	4-#5 EA. WAY BOT.
F4.0	4'-0"	4'-0"	1'-0"	4-#5 EA. WAY BOT.
F4.5	4'-6"	4'-6"	1'-0"	4-#5 EA. WAY BOT.

1. THIS FOUNDATION PLAN ONLY CONVEYS STRUCTURAL INFO. RELATED TO THE FOUNDATION. FOR GENERAL FEATURES, DIMENSIONS, CONDUITS, ELECTRICAL EMBEDS, STEP HEIGHTS, ECT., SEE ARCH. PLAN. ARCHITECTURAL PLAN SHOWN HERE IN FOR REFERENCE ONLY.

2. FTGS. & FND. SHALL BE IN ACCORDANCE W/ LOCAL BUILDING CODES.

3. SOIL COMPACTION AND FILL SHALL BE COMPACTED TO A MIN. OF 95% MODIFIED PROCTOR IN ACCORDANCE WITH ASTM D-1557.

03.22.21
Christopher J Sabourin
FL PE#71461

SABO
STRUCTURAL
ENGINEERING
CA#32529
235 9TH AVE N
JAX BEACH, FL 32250
904-712-5750
CHRIS@SABOENG.COM

PLAN NAME	BRYAN ZECHAR
SSE No.	21-0119

ISSUE	DATE
PERMIT	03.22.21
REVISIONS	DATE

STRUCTURAL ENGINEERING FOR
THE JONES RESIDENCE

FIELD ALTERATION
CONTRACTOR SHALL CONTACT SABO
STRUCTURAL ENGINEERING PRIOR TO
MAKING ANY STRUCTURAL FIELD
MODIFICATIONS WHICH MAY VARY
FROM THE INTENT OF THE ORIGINAL
CONSTRUCTION DOCUMENTS. ANY
FIELD ALTERATIONS MADE PRIOR TO
BEING APPROVED BY CHRISTOPHER
SABOURIN MAY RESULT IN ADDITIONAL
ENGINEERING OR INSPECTION FEES.

SCALING
DO NOT SCALE DIMENSIONS FROM
THESE DRAWINGS. IF A DIMENSION IS
UNCLEAR REFER TO THE
ARCHITECTURAL DRAWINGS OR
CONTACT THE E.O.B.

FOUNDATION
PLAN

SHEET
S1.0
SHEET 3 OF 8



Christopher J. Sabourin
FL PE#71461

SABO
STRUCTURAL
ENGINEERING
CA#32529
235 9TH AVE N
JAX BEACH, FL 32250
904-712-5750
CHRIS@SABOENG.COM

PLAN NAME
BRYAN ZECHAR
SSE No.
21-0119

ISSUE	DATE
PERMIT	03.22.21
REVISIONS	DATE

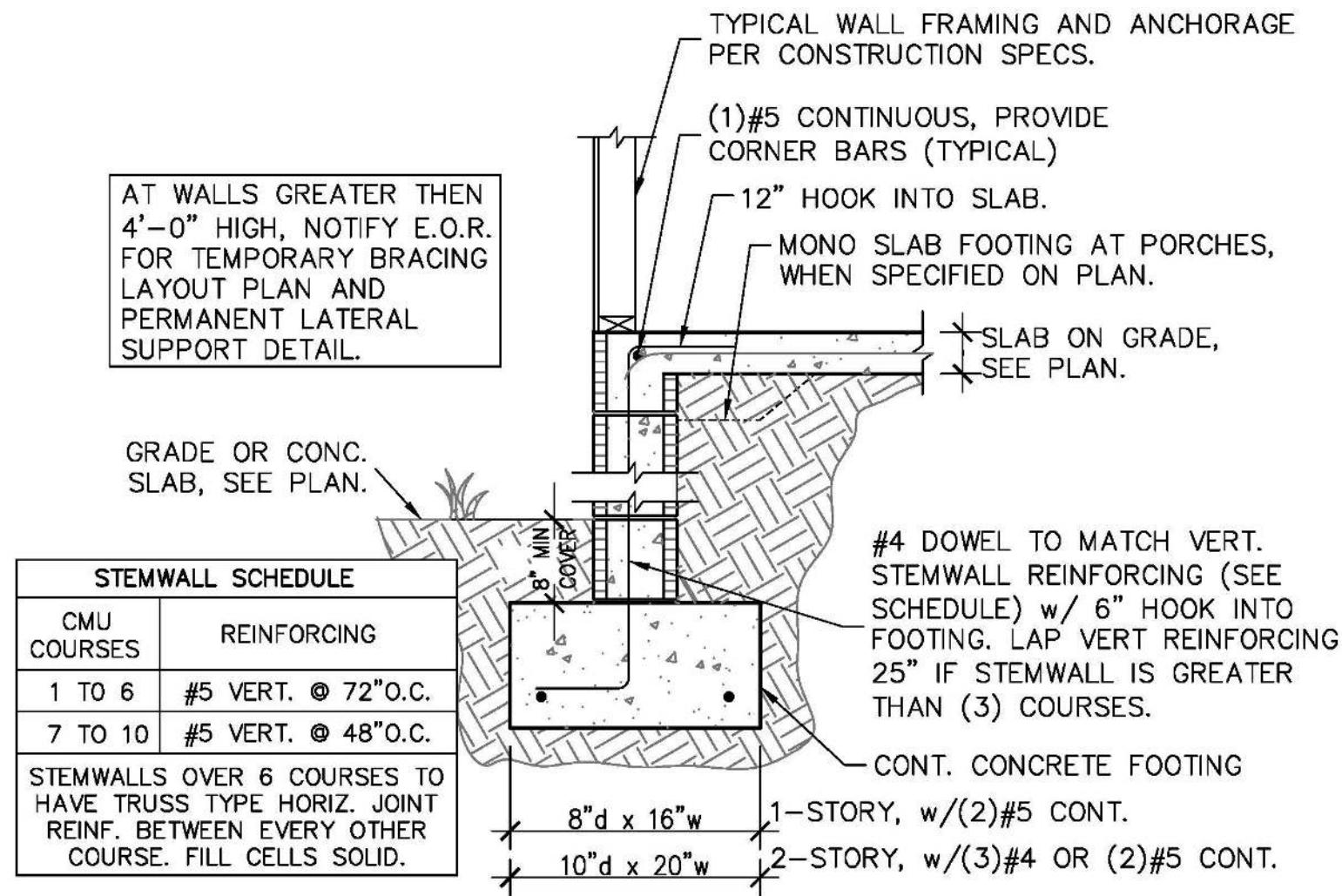
STRUCTURAL ENGINEERING FOR
THE JONES RESIDENCE

FIELD ALTERATION
CONTRACTOR SHALL CONTACT SABO
STRUCTURAL ENGINEERING PRIOR TO
MAKING ANY STRUCTURAL FIELD
MODIFICATIONS WHICH MAY VARY
FROM THE INTENT OF THE ORIGINAL
CONSTRUCTION DOCUMENTS. ANY
FIELD ALTERATIONS MADE PRIOR TO
BEING APPROVED BY CHRISTOPHER
SABOURIN MAY RESULT IN ADDITIONAL
ENGINEERING OR INSPECTION FEES.

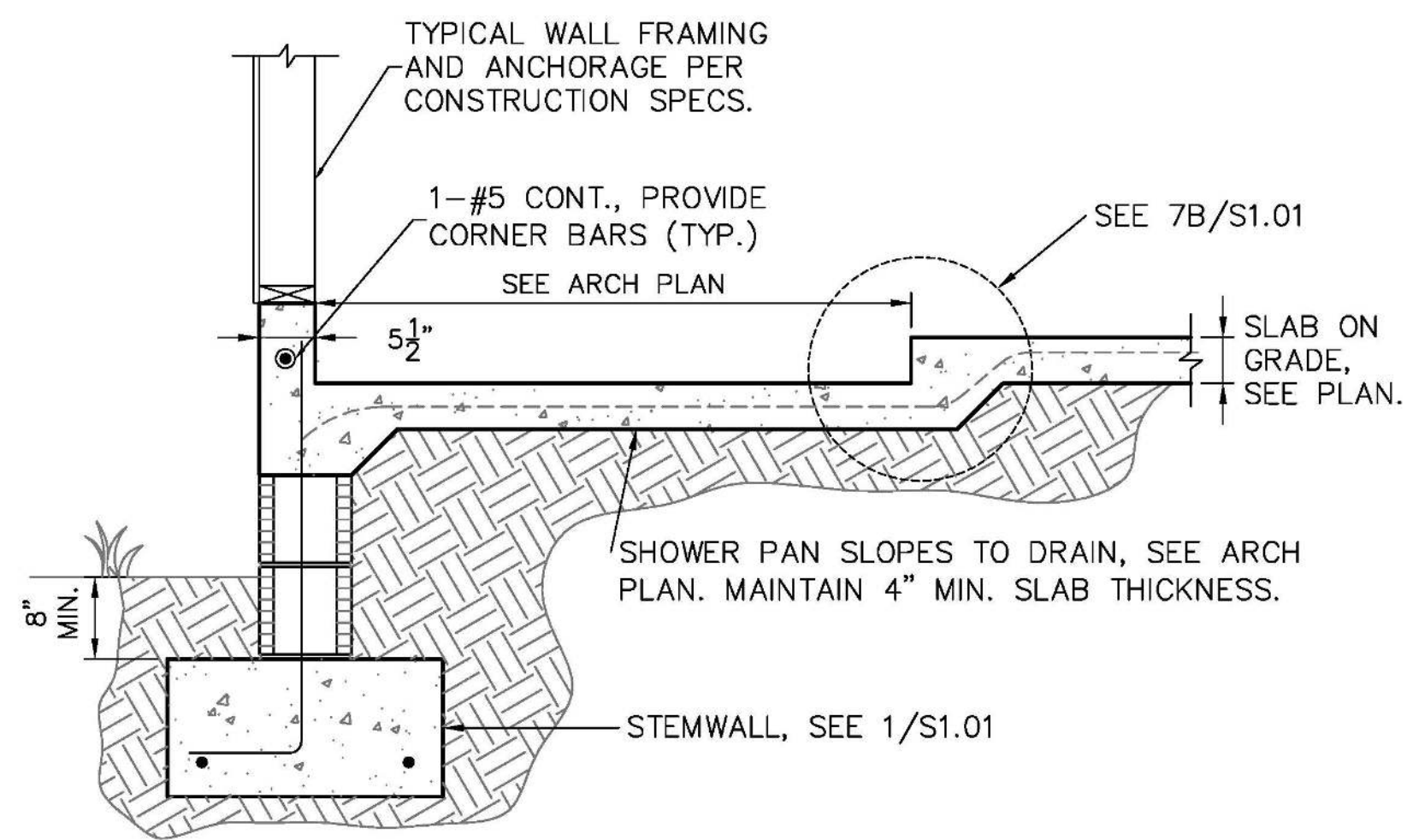
SCALING
DO NOT SCALE DIMENSIONS FROM
THESE DRAWINGS. IF A DIMENSION IS
UNCLEAR, REFER TO THE
ARCHITECTURAL DRAWINGS OR
CONTACT THE E.O.B.

FOUNDATION
DETAILS

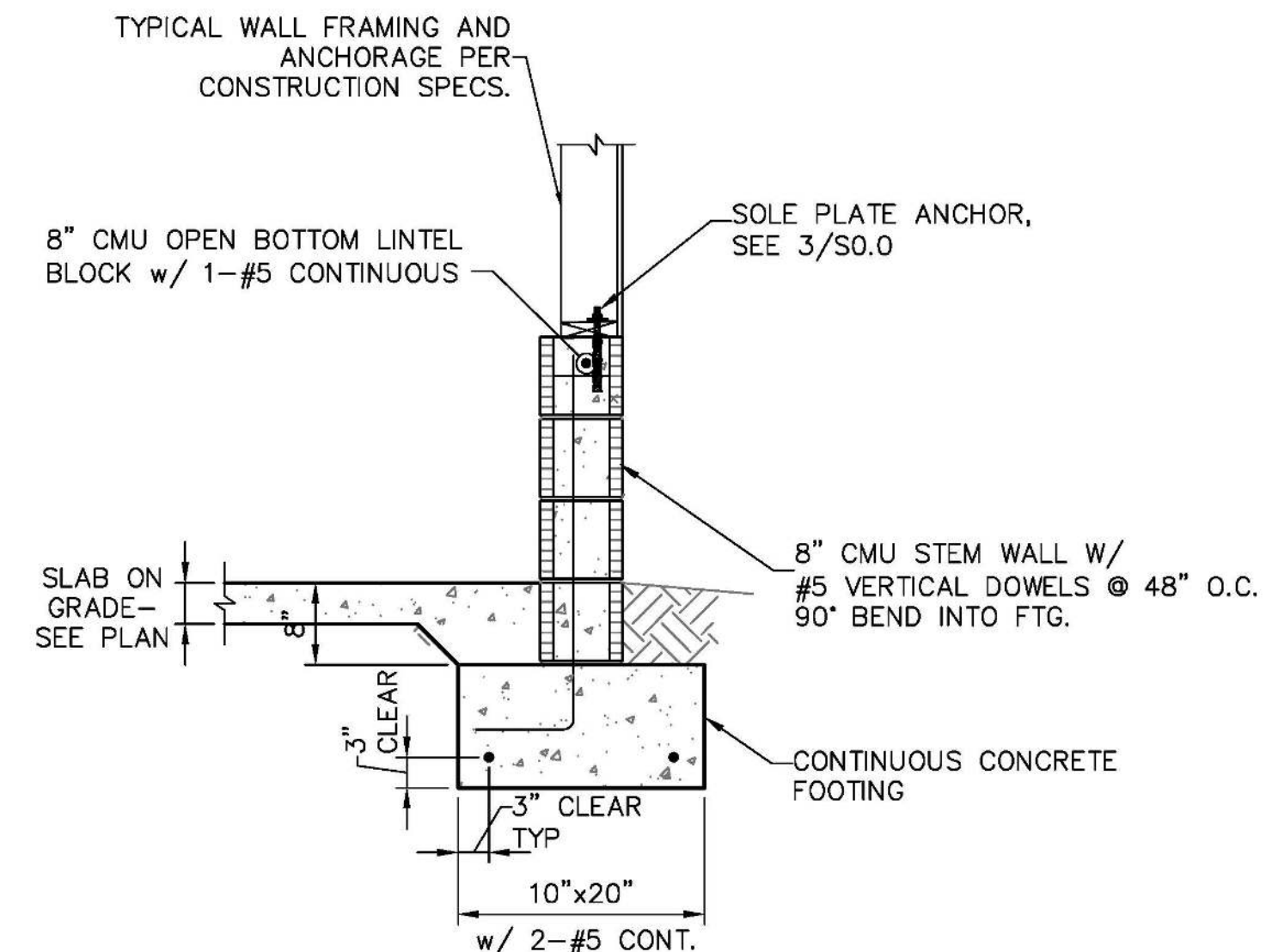
SHEET
S1.01
SHEET 4 OF 8



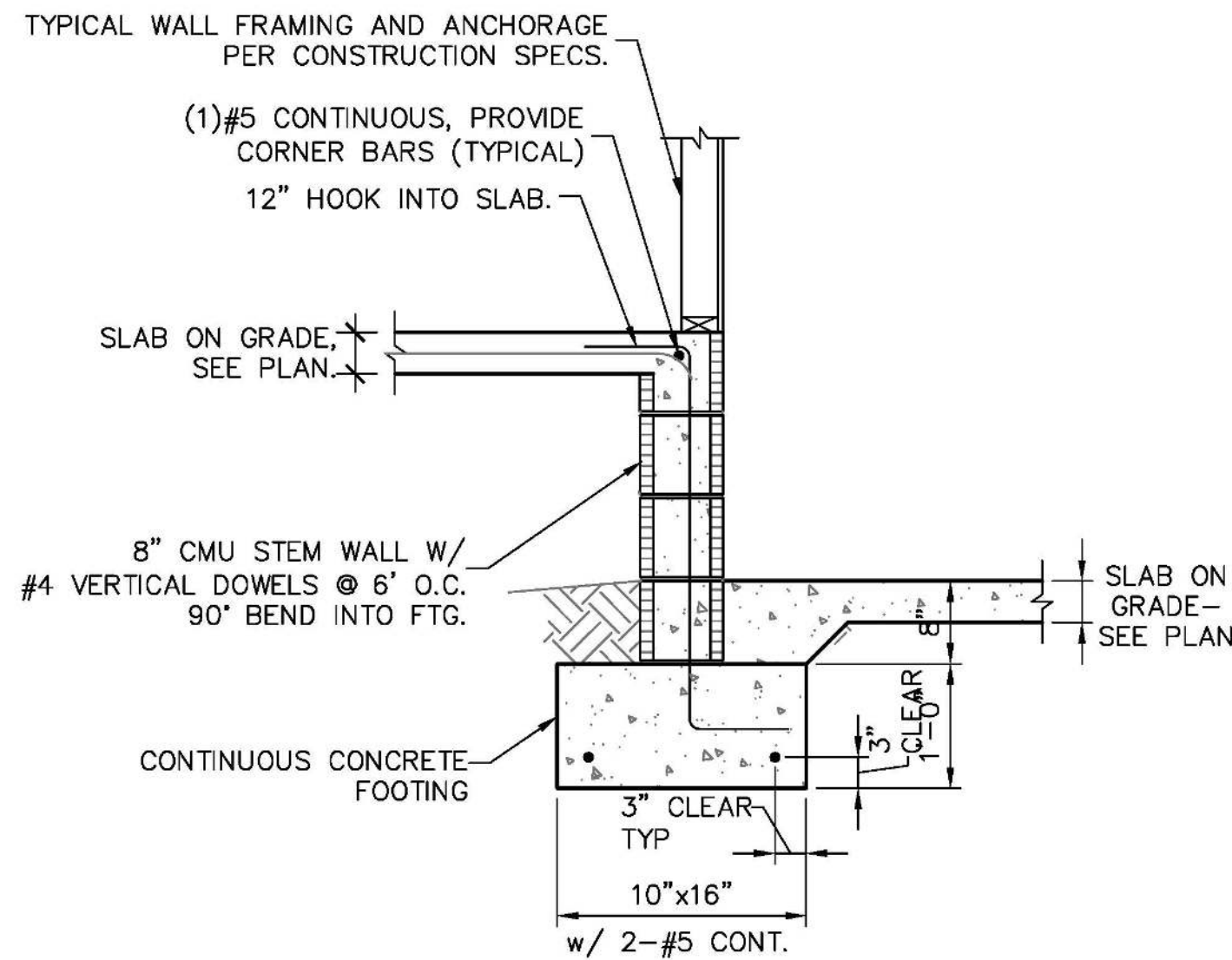
1 STEMWALL FOOTING
S1.01 SCALE: 3/4" = 1'-0"



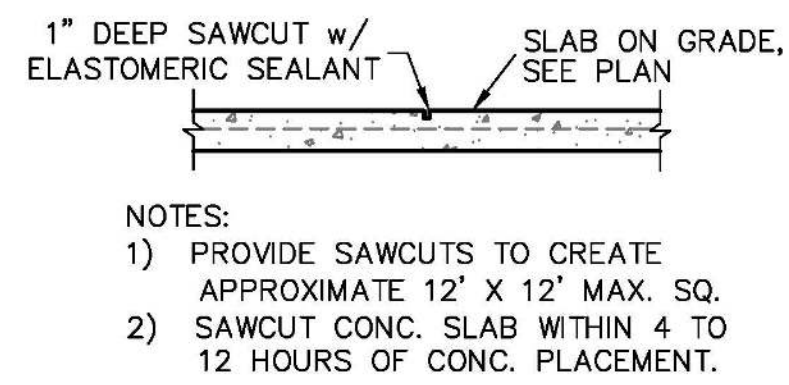
2 FOOTING W/ SHOWER RECESS
S1.01 SCALE: 3/4" = 1'-0"



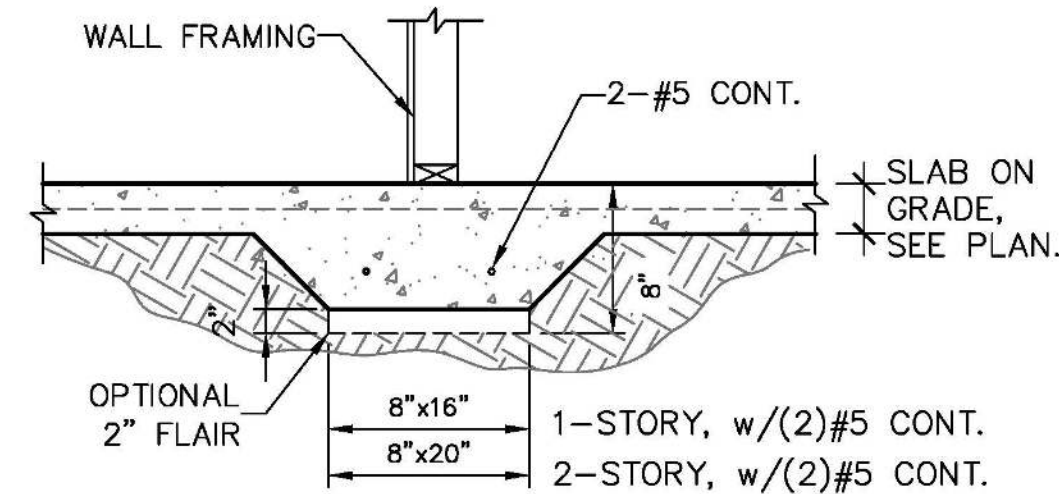
3 GARAGE STEM WALL
S1.01 SCALE: 3/4" = 1'-0"



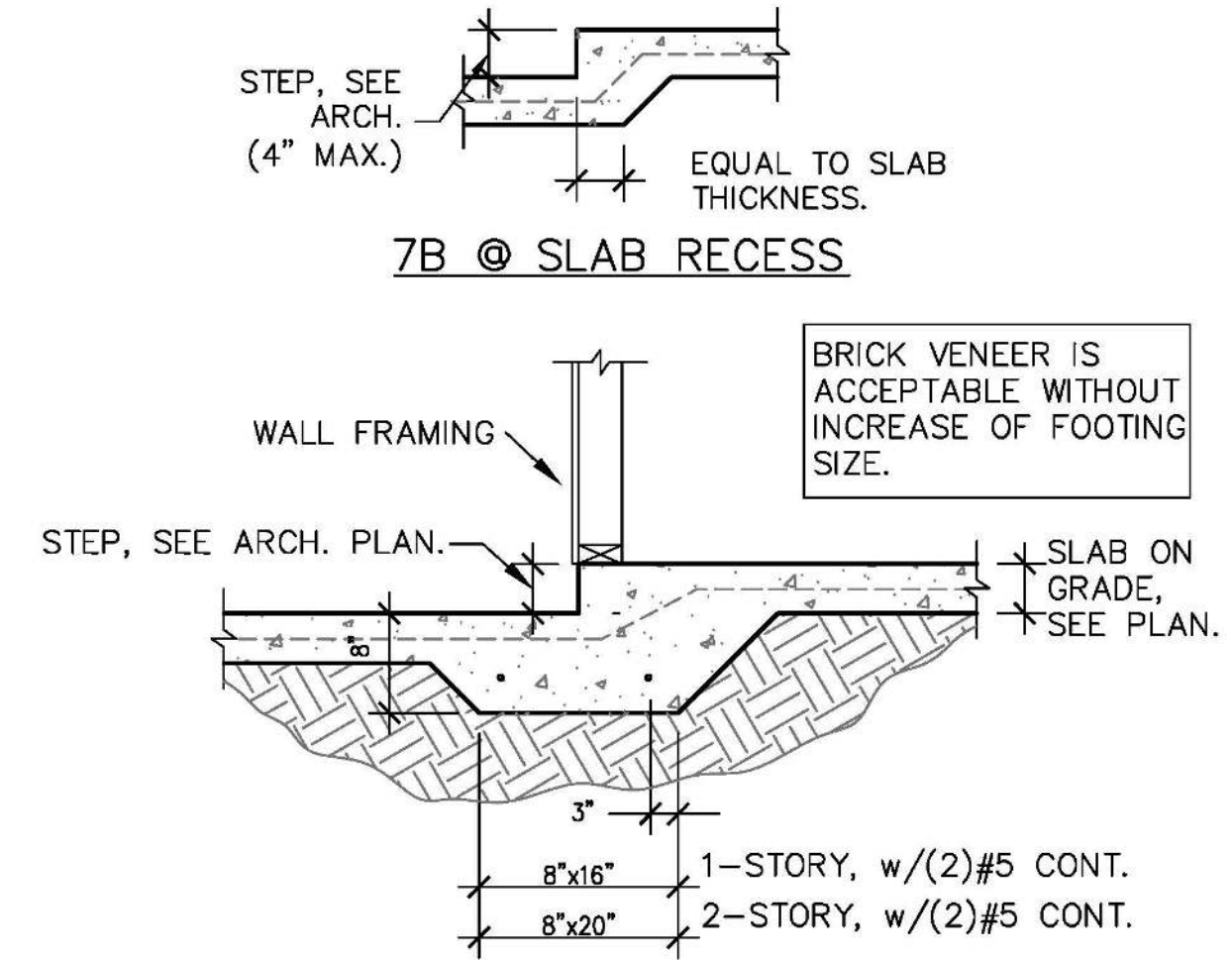
4 STEMWALL AT GARAGE
S1.01 SCALE: 3/4" = 1'-0"



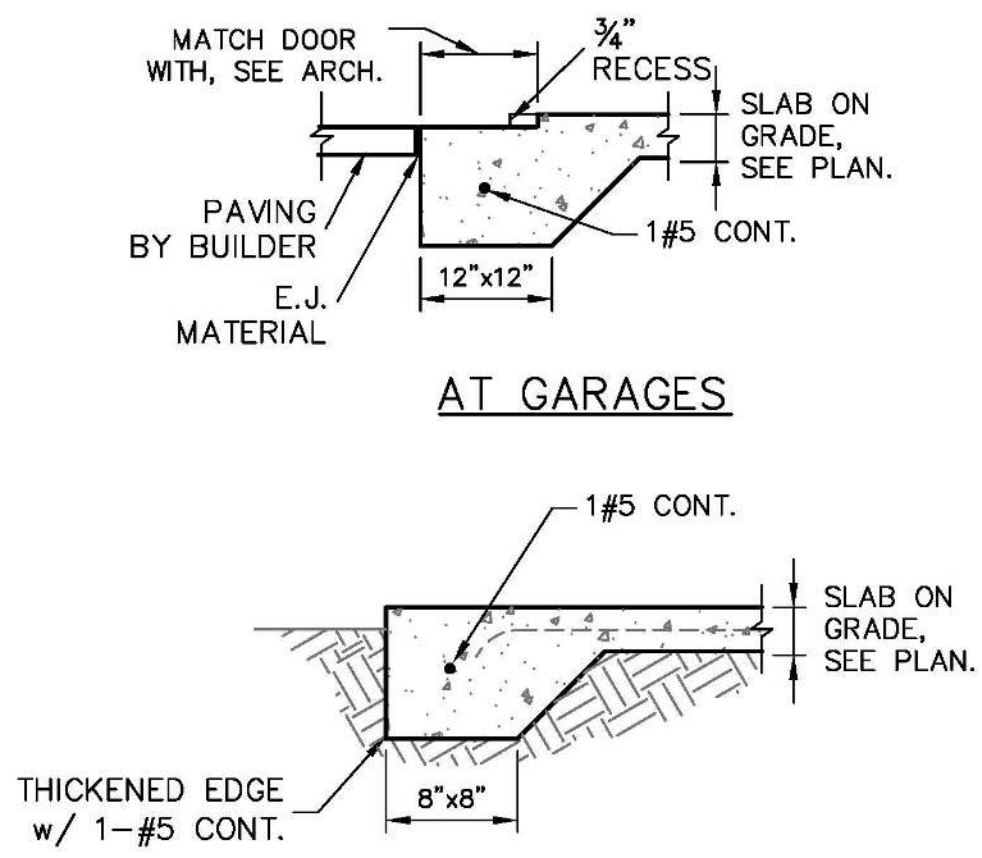
5 SAW CUT DETAIL
S1.01 SCALE: 3/4" = 1'-0"



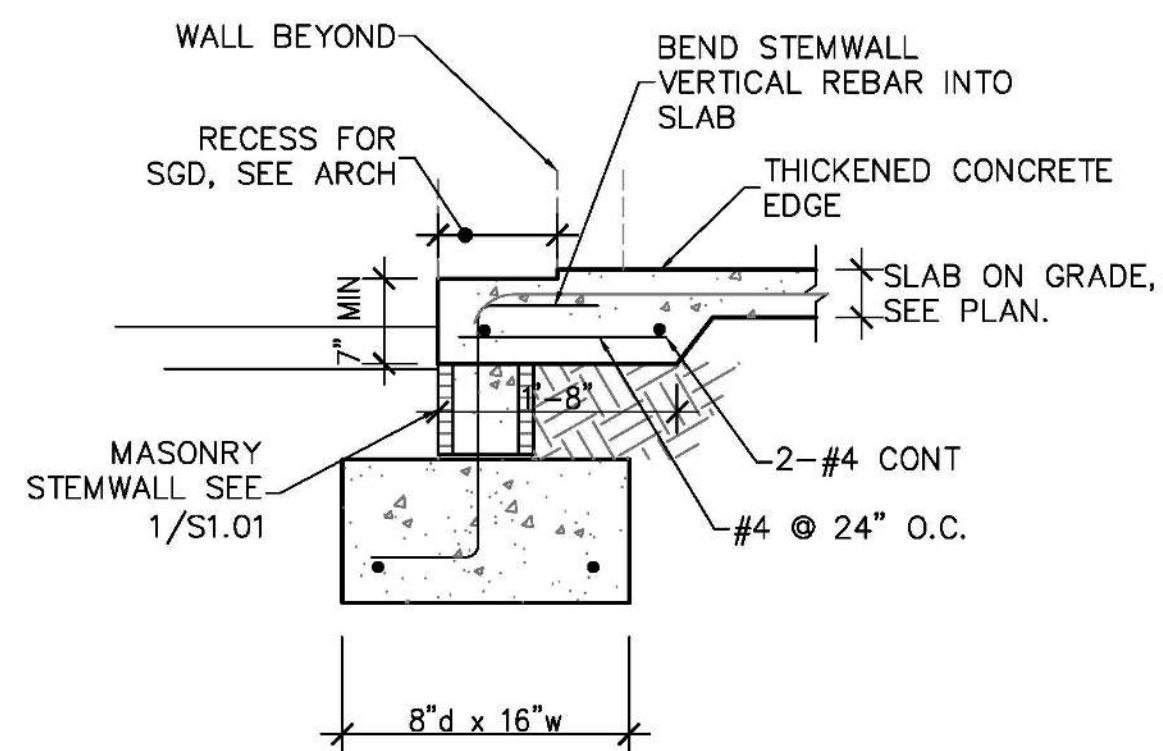
6 BEARING AT INTERIOR
S1.01 SCALE: 3/4" = 1'-0"



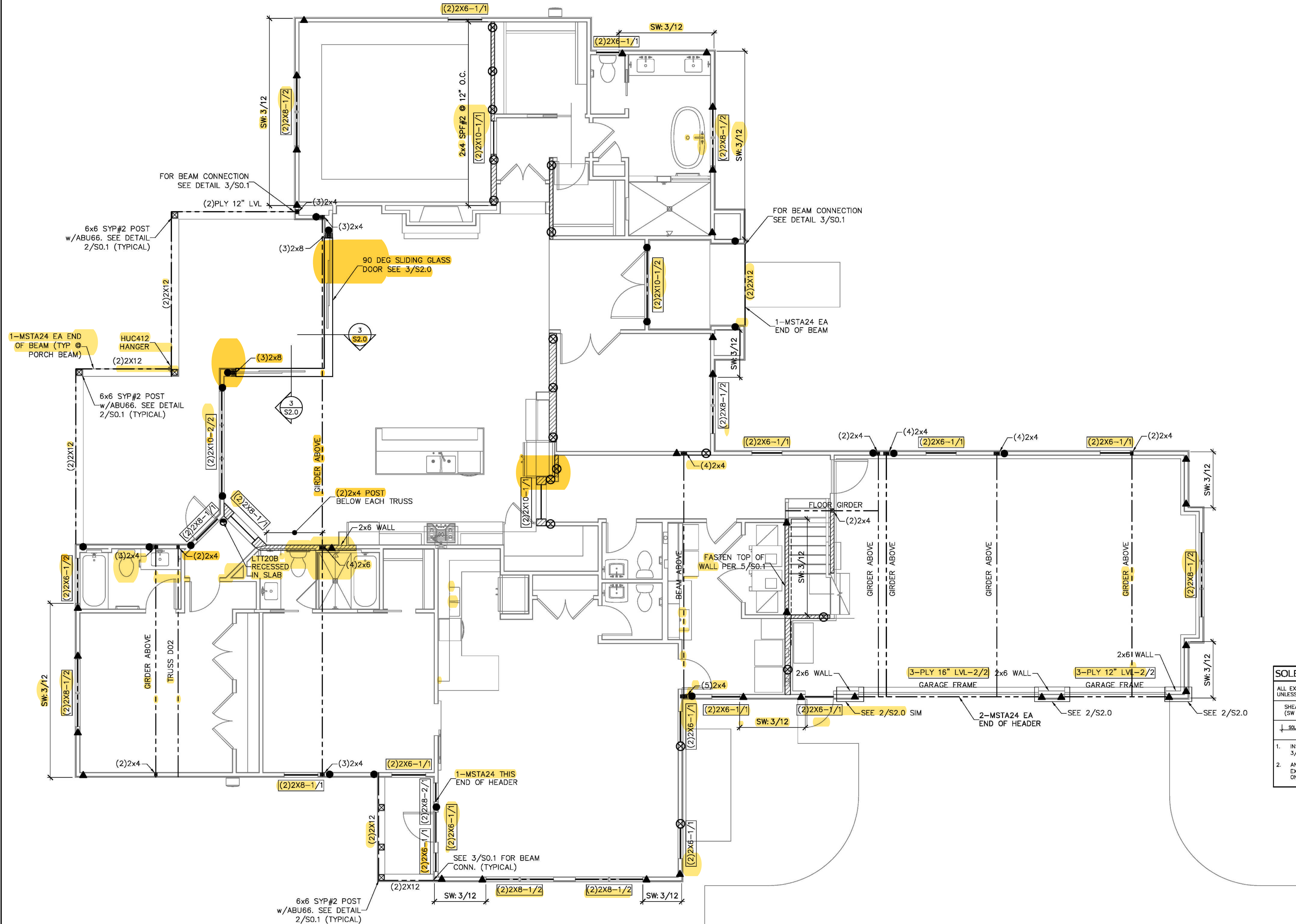
7 MONO. FOOTING AT STEP-DOWN
S1.01 SCALE: 3/4" = 1'-0"



8 THICKENED SLAB
S1.01 SCALE: 3/4" = 1'-0"



9 STEMWALL FOOTING AT SLIDER
S1.01 SCALE: 3/4" = 1'-0"



FIRST LEVEL WALL FRAMING PLAN
SCALE: 1/4" = 1'-0"

SYMBOLS LEGEND

SW 3/12 DESIGNATES OSB SHEARWALL. THE HIDDEN LINE DESIGNATES SIDE OF WALL. THE SHEARWALL SHEATHING TO BE APPLIED. 8d @ 16" O.C. DESIGNATES 8d COMMONS @ 16" O.C. EDGE & 8" O.C. "IN THE FIELD"

(2)2x8-1/2 DESIGNATES THE HEADER SIZE, NUMBER OF PLYS & JACK/KING STUDS NEEDED FOR SUPPORT HEADER.

BEAM OR TRUSS, SEE PLAN

ANCHOR LEGEND

X 3/4" A307 DIAMETER FULL HEIGHT THREADED ROD, SEE DETAIL 12/SO.1

X5 3/4" A307 DIAMETER FULL HEIGHT THREADED ROD, SEE DETAIL 12/SO.1

⊗ 3/4" A307 DIAMETER THREADED ROD TERMINATES AT FIRST FLOOR TOP PLATE, SEE DETAIL 12/SO.1

⊗5 3/4" A307 DIAMETER THREADED ROD TERMINATES AT FIRST FLOOR TOP PLATE, SEE DETAIL 12/SO.1

▲ SIMPSON HTTS SEE DETAIL 15/SO.1

● SIMPSON DTT22 SEE DETAIL 15/SO.1

● SIMPSON LTT20B SEE DETAIL 15/SO.1

WALL STUD SCHEDULE

LOCATION	PLATE HEIGHT	STUD SIZE & SPACING
EXTERIOR	8'-1" MAX	2x4 SPF#2 @ 16" O.C.
EXTERIOR	10'-1" MAX	2x6 SPF#2 @ 16" O.C. OR 2x4 SPF#2 @ 12" O.C.
EXTERIOR	10'-1" TO 14'-0"	2x6 SPF#2 @ 16" O.C.
INTERIOR	10'-0" MAX	2x4 SPF#2 @ 16" O.C.
INTERIOR	12'-0" MAX	2x6 SPF#2 @ 16" O.C. OR 2x4 SPF#2 @ 12" O.C.

STUD NOTES

1.) WALL STUDS SPECIFIED ON PLAN SUPERSEDE THIS TABLE.

2.) MINIMUM STUD SIZE AND SPACING ARE SHOWN. CONTRACTOR MAY INCREASE STUD SIZE TO MEET ARCHITECTURAL REQUIREMENTS.

3.) SPF DENOTES SPRUCE PINE FIR. SYP DENOTES SOUTHERN YELLOW PINE.

4.) USE SYP#2 FOR ALL TOP PLATES AND SOLE PLATES.

5.) FASTEN BOTTOM PLATE OF INTERIOR LOAD BEARING WALLS TO CONCRETE SLAB w/16d MASONRY OUT NAILS @ 16" O.C. MINIMUM. SEE 3/SO.0 FOR ADDITIONAL ANCHORS AT SHEARWALLS.

COMBINED USE PANEL NOTES

1. EXTERIOR WALL SHEATHING SHALL BE CONTINUOUS FROM BOTTOM PLATE TO UPPER MOST TOP PLATE. SEE DETAIL 1/SO.1 FOR SHEATHING SPLICE LOCATIONS FOR MULTI STORY CONDITIONS.

2. SEE SHEET S.O.0 FOR WALL SHEATHING SPECIFICATIONS.

3. UPPER MOST TOP PLATE SUPPORTING ROOF MEMBERS SHALL BE STRAPPED AS SHOWN IN DETAIL 1/SO.0

4. INSTALL SOLE PLATE ANCHORS PER DETAIL 3/SO.0

GENERAL NOTES

1. SEE DETAIL 2/SO.0 FOR WALL FRAMING DETAIL. SEE WALL STUD SCHEDULE THIS SHEET FOR STUD SIZES AND SPACING. AT GIRDERS AND BEAMS, PROVIDE STUDS BELOW TO MATCH BEAM/GIRDER PLYS.

2. SEE SHEET S.O.0 FOR ROOF AND FLOOR SHEATHING SPECIFICATIONS.

3. WHERE FRAMING MEMBERS CONSIST OF MULTIPLE PLYS (BEAMS, HEADER, AND STUDS) FASTEN PLYS TOGETHER PER DETAIL 6/SO.0

4. INSTALL SOLE PLATE ANCHORS PER DETAIL 3/SO.0

5. AT SHEARWALLS, PROVIDE DIAPHRAGM ATTACHMENT PER DETAIL 5/SO.1

6. FOR ATTACHMENT OF EXTERIOR WALLS THAT TERMINATE BETWEEN TRUSSES, SEE 5A/SO.1

7. AT PORCHES, SEE DETAIL 2/SO.1 FOR FRAMING AND HOLD DOWNS

SOLE PLATE ANCHOR SPACING SCHD

ALL EXTERIOR WALL UNLESS OTHER NOTED	42" O.C.
SHEARWALLS (SW 8d@3"/6")	24" O.C.
SOLE PLT @	WHEN NOTED ON PLAN SEE NOTE 2

1. INSTALL SOLE PLATE ANCHORS PER DETAIL 3/SO.0

2. ANCHOR SPACING SHALL BE AS NOTED. FOR EXAMPLE - SOLE PLT @ 36" = 36" ON-CENTER SPACING

CHRISTOPHER J. SABOURIN
LICENSE
NO. 71461
STATE OF FLORIDA
PROFESSIONAL ENGINEER
03.22.21
Christopher J. Sabourin
FL PE#71461

SABO STRUCTURAL ENGINEERING
CA#32529
235 9TH AVE N
JAX BEACH, FL 32250
904-712-5750
CHRIS@SABOENG.COM

PLAN NAME
BRYAN ZECHAR

SSE No.
21-0119

ISSUE DATE

PERMIT 03.22.21

REVISIONS DATE

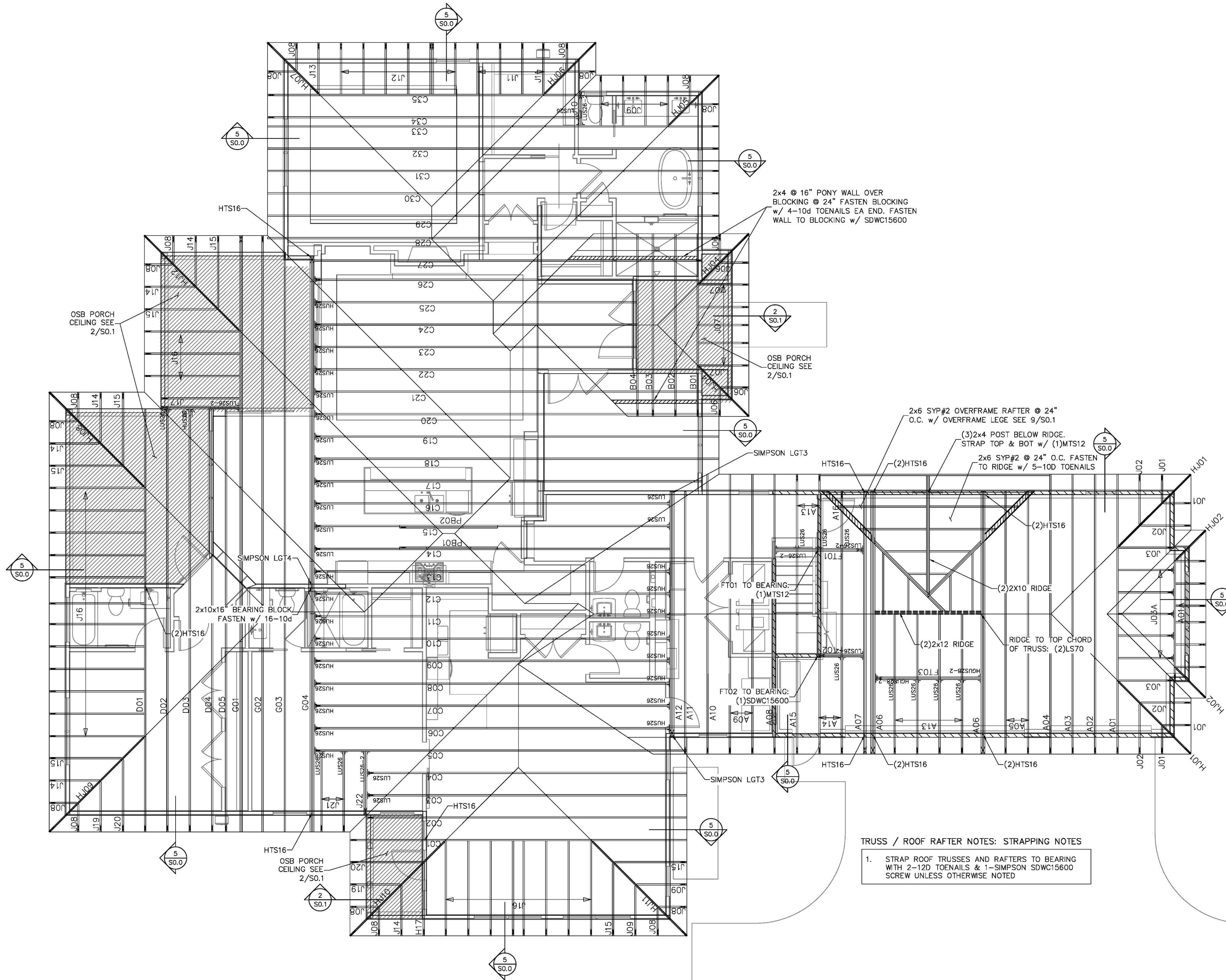
STRUCTURAL ENGINEERING FOR THE JONES RESIDENCE

FIELD ALTERATION
CONTRACTOR SHALL CONTACT SABO STRUCTURAL ENGINEERING PRIOR TO MAKING ANY STRUCTURAL FIELD MODIFICATIONS WHICH MAY VARY FROM THE INTENT OF THE ORIGINAL CONSTRUCTION DOCUMENTS. ANY FIELD ALTERATIONS MADE PRIOR TO BEING APPROVED BY CHRISTOPHER SABOURIN MAY RESULT IN ADDITIONAL ENGINEERING OR INSPECTION FEES.

SCALING
DO NOT SCALE DIMENSIONS FROM THESE DRAWINGS. IF A DIMENSION IS UNCLEAR REFER TO THE ARCHITECTURAL DRAWINGS OR CONTACT THE E.O.B.

FIRST LEVEL WALL FRAMING PLAN

SHEET
S1.1
SHEET 5 OF 8



ROOF TRUSS PLACEMENT PLAN
SCALE: 1/4" = 1'-0"

SYMBOLS LEGEND

HTS16

DESIGNATES UPLIFT CONNECTION.

FRAMING PLAN NOTES:

1. FOR TYPICAL ROOF SHEATHING AND FRAMING, SEE SHEET S.O.0.

2. FOR SPECIFIC UPLIFT CONNECTORS, SEE PLAN, MIN. (1)SDWC CONNECTOR.

3. FOR GENERAL DESIGN SPECIFICATIONS SEE SHEET S.O.0.

4. WHEN USING (2)H2.5T CLIPS ON 1 1/2" WIDE LUMBER, PLACE CLIPS DIAGONALLY ACROSS DOUBLE TOP PLATE FROM EACH OTHER.

TRUSS FASTENING DETAILS

TRUSS TIE DOWN WITH SIMPSON SDWC

SIMPSON SDWC INSTALLATION RANGE

SDWC AT TOP PLATE SPLICE

CHRISTOPHER J. SABOURIN
LICENSE
NO. 71461
STATE OF FLORIDA
PROFESSIONAL ENGINEER
03.22.21
Christopher J Sabourin
FL PE#71461

SABO
STRUCTURAL
ENGINEERING
CA#32529
235 9TH AVE N
JAX BEACH, FL 32250
904-712-5750
CHRIS@SABOENG.COM

PLAN NAME
BRYAN ZECHAR
SSE No.
21-0119

ISSUE	DATE
PERMIT	03.22.21
REVISIONS	DATE

STRUCTURAL ENGINEERING FOR
THE JONES RESIDENCE

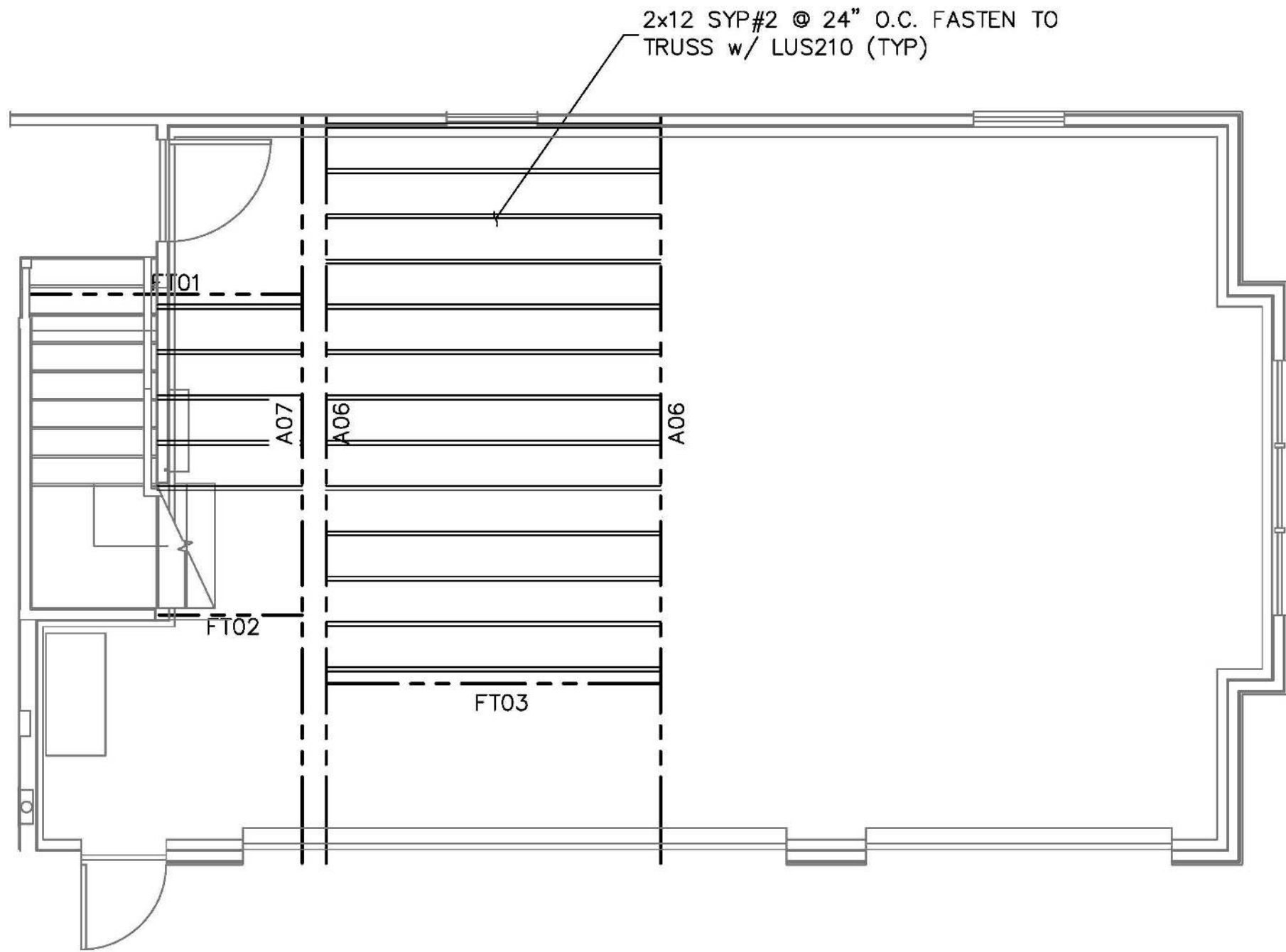
FIELD ALTERATION
CONTRACTOR SHALL CONTACT SABO
STRUCTURAL ENGINEERING PRIOR TO
MAKING ANY STRUCTURAL FIELD
MODIFICATIONS WHICH MAY VARY
FROM THE INTENT OF THE ORIGINAL
CONSTRUCTION DOCUMENTS. ANY
FIELD ALTERATIONS MADE PRIOR TO
BEING APPROVED BY CHRISTOPHER
SABOURIN MAY RESULT IN ADDITIONAL
ENGINEERING OR INSPECTION FEES.

SCALING
DO NOT SCALE DIMENSIONS FROM
THESE DRAWINGS. IF A DIMENSION IS
UNCLEAR REFER TO THE
ARCHITECTURAL DRAWINGS OR
CONTACT THE E.O.B.

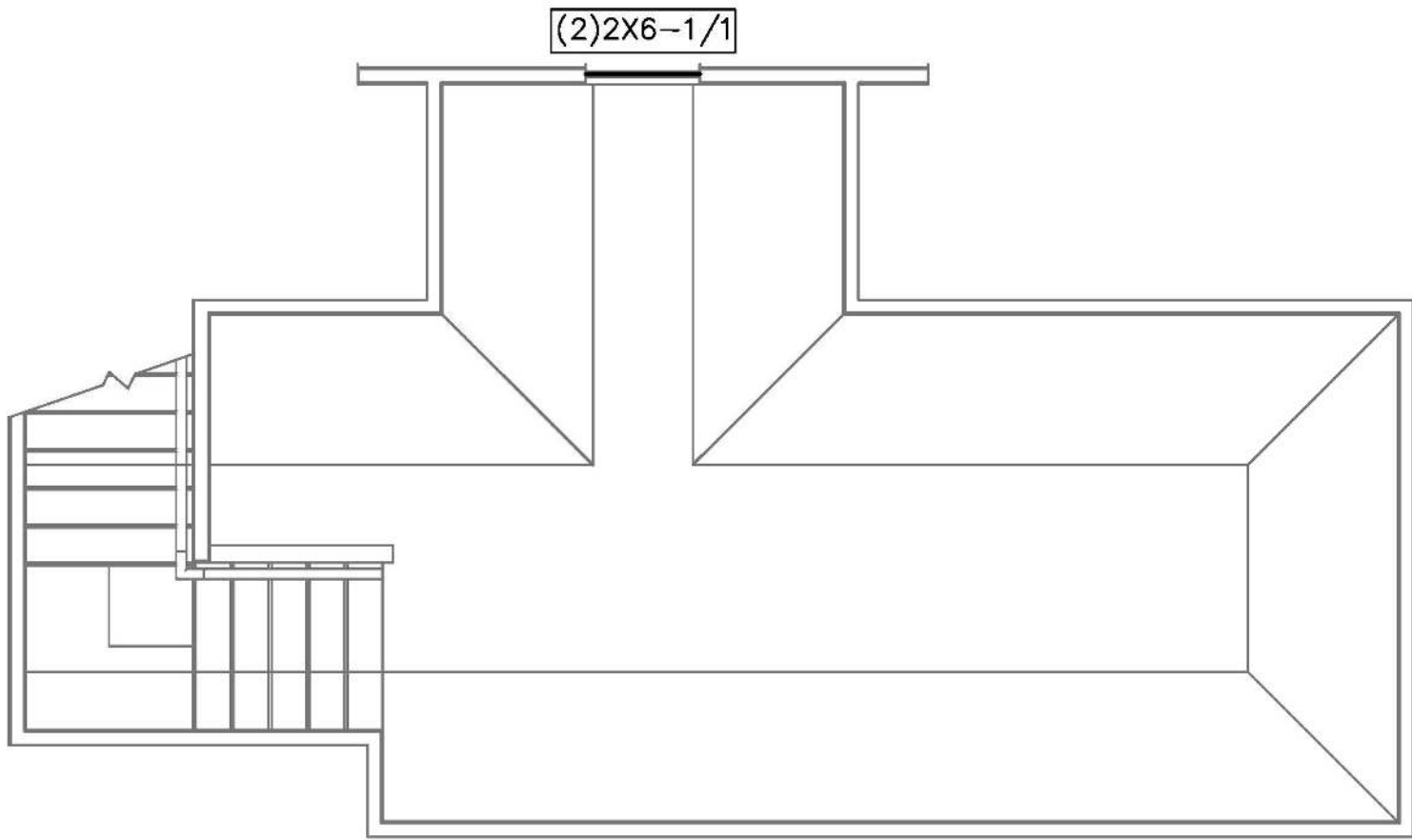
ROOF TRUSS
PLACEMENT
PLAN

SHEET
S1.2

SHEET 6 OF 8



SECOND LEVEL TRUSS FRAMING PLAN
SCALE: 1/4" = 1'-0"



SECOND LEVEL WALL FRAMING PLAN
SCALE: 1/4" = 1'-0"

SYMBOLS LEGEND

	DESIGNATES OSB SHEARWALL. THE HIDDEN LINE DESIGNATES SIDE OF WALL. THE SHEARWALL SHEATHING TO BE APPLIED. 8d @ 8" DESIGNATES 8d COMMONS @ 3" O.C. EDGE & 8" O.C. "IN THE FIELD"
	DESIGNATES THE HEADER SIZE, NUMBER OF PLYS & JACK/KING STUDS NEEDED FOR SUPPORT HEADER.
	BEAM OR TRUSS, SEE PLAN

ANCHOR LEGEND

	3/8" A307 DIAMETER FULL HEIGHT THREADED ROD, SEE DETAIL 12/SO.1
	3/8" A307 DIAMETER FULL HEIGHT THREADED ROD, SEE DETAIL 12/SO.1
	3/8" A307 DIAMETER THREADED ROD TERMINATES AT FIRST FLOOR TOP PLATE, SEE DETAIL 12/SO.1
	3/8" A307 DIAMETER THREADED ROD TERMINATES AT FIRST FLOOR TOP PLATE, SEE DETAIL 12/SO.1
	SIMPSON HTTS SEE DETAIL 15/SO.1
	SIMPSON DT22 SEE DETAIL 15/SO.1
	SIMPSON LT20B SEE DETAIL 15/SO.1

WALL STUD SCHEDULE

LOCATION	PLATE HEIGHT	STUD SIZE & SPACING
EXTERIOR	8'-1" MAX	2x4 SPF#2 @ 16" O.C.
EXTERIOR	10'-1" MAX	2x6 SPF#2 @ 16" O.C. OR 2x4 SPF#2 @ 12" O.C.
EXTERIOR	10'-1" TO 14'-0"	2x6 SPF#2 @ 16" O.C.
INTERIOR	10'-0" MAX	2x4 SPF#2 @ 16" O.C.
INTERIOR	12'-0" MAX	2x6 SPF#2 @ 16" O.C. OR 2x4 SPF#2 @ 12" O.C.

STUD NOTES:

- 1.) WALL STUDS SPECIFIED ON PLAN SUPERSEDE THIS TABLE.
- 2.) MINIMUM STUD SIZE AND SPACING ARE SHOWN. CONTRACTOR MAY INCREASE STUD SIZE TO MEET ARCHITECTURAL REQUIREMENTS.
- 3.) SPF DENOTES SPRUCE PINE FIR.. SYP DENOTES SOUTHERN YELLOW PINE.
- 4.) USE SYP#2 FOR ALL TOP PLATES AND SOLE PLATES.
- 5.) FASTEN BOTTOM PLATE OF INTERIOR LOAD BEARING WALLS TO CONCRETE SLAB w/16s MASONRY OUT NAILS @ 16" O.C. MINIMUM. SEE 3/SO.0 FOR ADDITIONAL ANCHORS AT SHEARWALLS

COMBINED USE PANEL NOTES

1. EXTERIOR WALL SHEATHING SHALL BE CONTINUOUS FROM BOTTOM PLATE TO UPPER MOST TOP PLATE. SEE DETAIL 1/SO.1 FOR SHEATHING SPLICE LOCATIONS FOR MULTI STORY CONDITIONS
2. SEE SHEET S0.0 FOR WALL SHEATHING SPECIFICATIONS.
3. UPPER MOST TOP PLATE SUPPORTING ROOF MEMBERS SHALL BE STRAPPED AS SHOWN IN DETAIL 1/SO.0
4. INSTALL SOLE PLATE ANCHORS PER DETAIL 3/SO.0

GENERAL NOTES

1. SEE DETAIL 2/SO.0 FOR WALL FRAMING DETAIL. SEE WALL STUD SCHEDULE THIS SHEET FOR STUD SIZES AND SPACING. AT GIRDERS AND BEAMS, PROVIDE STUDS BELOW TO MATCH BEAM/GIRDER PLIES.
2. SEE SHEET S0.0 FOR ROOF AND FLOOR SHEATHING SPECIFICATIONS.
3. WHERE FRAMING MEMBERS CONSIST OF MULTIPLE PLIES (BEAMS, HEADER, AND STUDS) FASTEN PLIES TOGETHER PER DETAIL 6/SO.0
4. INSTALL SOLE PLATE ANCHORS PER DETAIL 3/SO.0
5. AT SHEARWALLS, PROVIDE DIAPHRAGM ATTACHMENT PER DETAIL 5/SO.1
6. FOR ATTACHMENT OF EXTERIOR WALLS THAT TERMINATE BETWEEN TRUSSES, SEE 5A/SO.1
7. AT PORCHES, SEE DETAIL 2/SO.1 FOR FRAMING AND HOLD DOWNS

SOLE PLATE ANCHOR SPACING SCHD

ALL EXTERIOR WALL UNLESS OTHER NOTED	42" O.C.
SHEARWALLS (SW 8d@3"/6")	24" O.C.
	WHEN NOTED ON PLAN SEE NOTE 2

1. INSTALL SOLE PLATE ANCHORS PER DETAIL 3/SO.0
2. ANCHOR SPACING SHALL BE AS NOTED. FOR EXAMPLE - SOLE PLT @ 36" = 36" ON-CENTER SPACING



Christopher J Sabourin
FL PE#71461

SABO
STRUCTURAL
ENGINEERING
CA#32529
235 9TH AVE N
JAX BEACH, FL 32250
904-712-5750
CHRIS@SABOENG.COM

PLAN NAME

BRYAN ZECHAR

SSE No.

21-0119

ISSUE

DATE

PERMIT

03.22.21

REVISIONS

DATE

STRUCTURAL ENGINEERING FOR
THE JONES RESIDENCE

FIELD ALTERATION

CONTRACTOR SHALL CONTACT SABO STRUCTURAL ENGINEERING PRIOR TO MAKING ANY STRUCTURAL FIELD MODIFICATIONS WHICH MAY VARY FROM THE INTENT OF THE ORIGINAL CONSTRUCTION DOCUMENTS. ANY FIELD ALTERATIONS MADE PRIOR TO BEING APPROVED BY CHRISTOPHER SABOURIN MAY RESULT IN ADDITIONAL ENGINEERING OR INSPECTION FEES.

SCALING

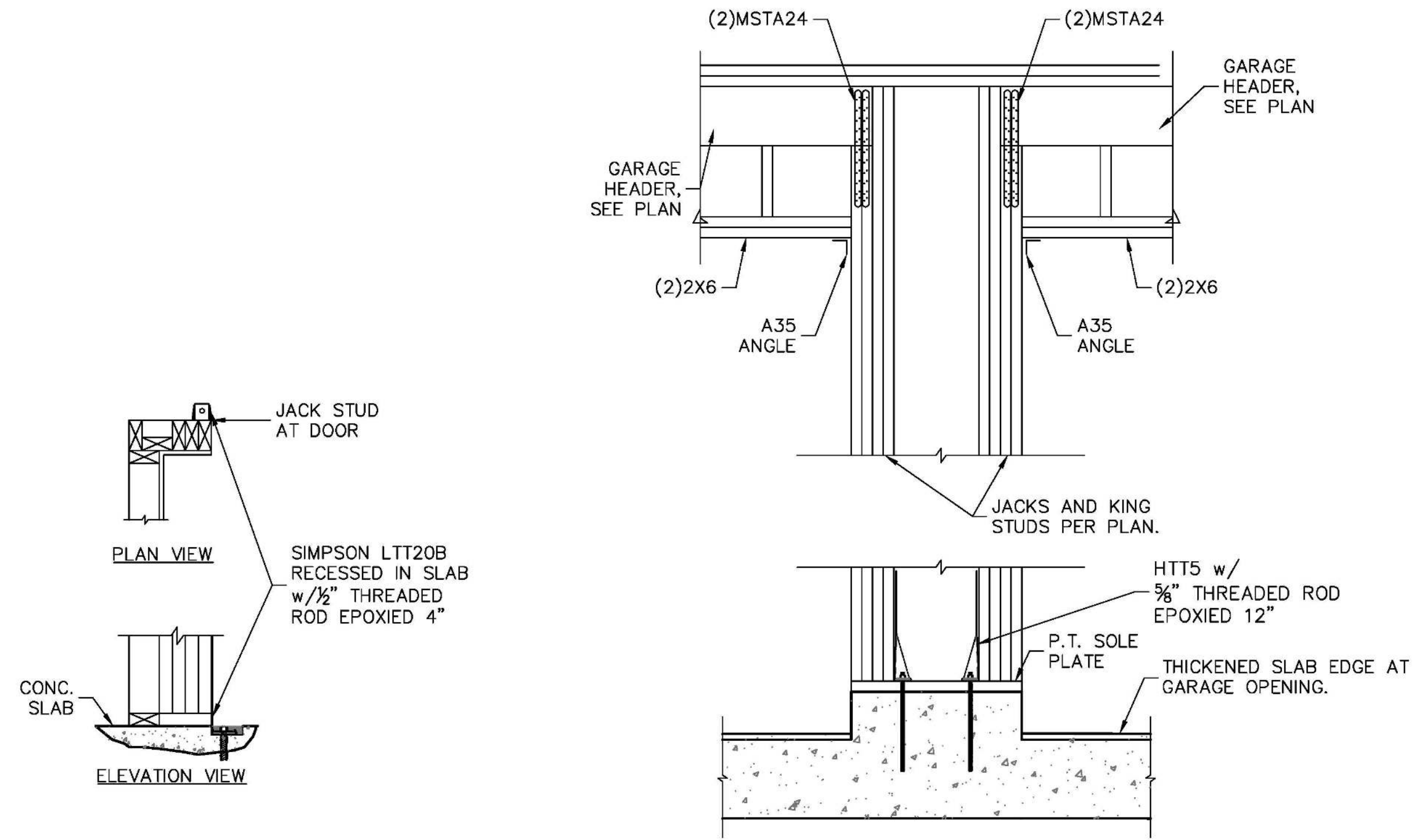
DO NOT SCALE DIMENSIONS FROM THESE DRAWINGS. IF A DIMENSION IS UNCLEAR REFER TO THE ARCHITECTURAL DRAWINGS OR CONTACT THE E.O.B.

SECOND
LEVEL
FRAMING
PLAN

SHEET

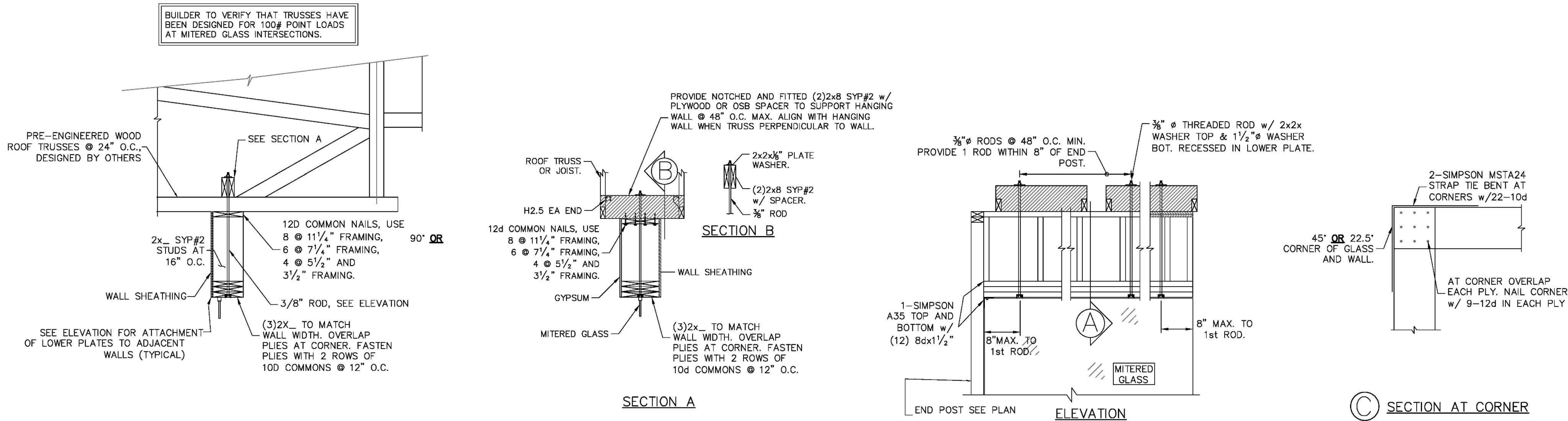
S1.3

SHEET 7 OF 8

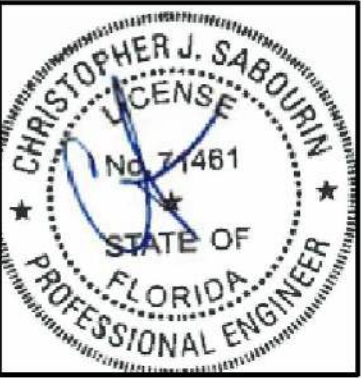


1 DOOR JAMB FASTENING
 WHEN NOTED S2.0 THIS DETAIL ONLY APPLIES WHEN NOTED ON PLAN

2 GARAGE CENTER WALL FRAMING
 S2.0 SCALE: 3/4" = 1'-0"



3 MITERED WINDOW HEAD FRAMING
 S2.0 SCALE: N.T.S.



03.22.21
 Christopher J Sabourin
 FL PE#71461

SABO
 STRUCTURAL
 ENGINEERING
 CA#32529
 235 9TH AVE N
 JAX BEACH, FL 32250
 904-712-5750
 CHRIS@SABOENG.COM

PLAN NAME
 BRYAN ZECHAR
 SSE No.
 21-0119

ISSUE	DATE
PERMIT	03.22.21
REVISIONS	DATE

STRUCTURAL ENGINEERING FOR
 THE JONES RESIDENCE

FIELD ALTERATION
 CONTRACTOR SHALL CONTACT SABO STRUCTURAL ENGINEERING PRIOR TO MAKING ANY STRUCTURAL FIELD MODIFICATIONS WHICH MAY VARY FROM THE INTENT OF THE ORIGINAL CONSTRUCTION DOCUMENTS. ANY FIELD ALTERATIONS MADE PRIOR TO BEING APPROVED BY CHRISTOPHER SABOURIN MAY RESULT IN ADDITIONAL ENGINEERING OR INSPECTION FEES.

SCALING
 DO NOT SCALE DIMENSIONS FROM THESE DRAWINGS. IF A DIMENSION IS UNCLEAR REFER TO THE ARCHITECTURAL DRAWINGS OR CONTACT THE E.O.B.

MISC
 DETAILS

SHEET
S2.0
 SHEET 8 OF 8