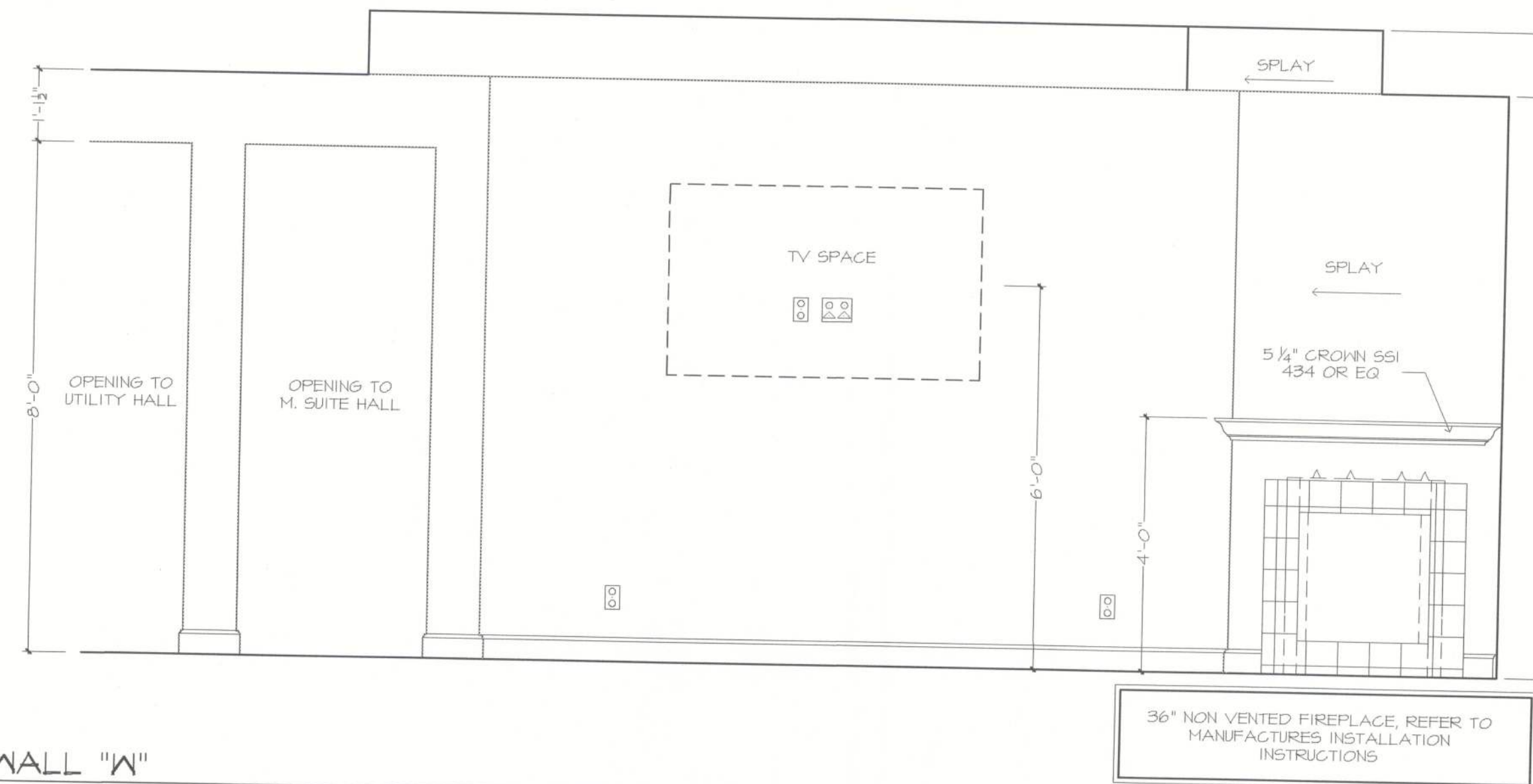
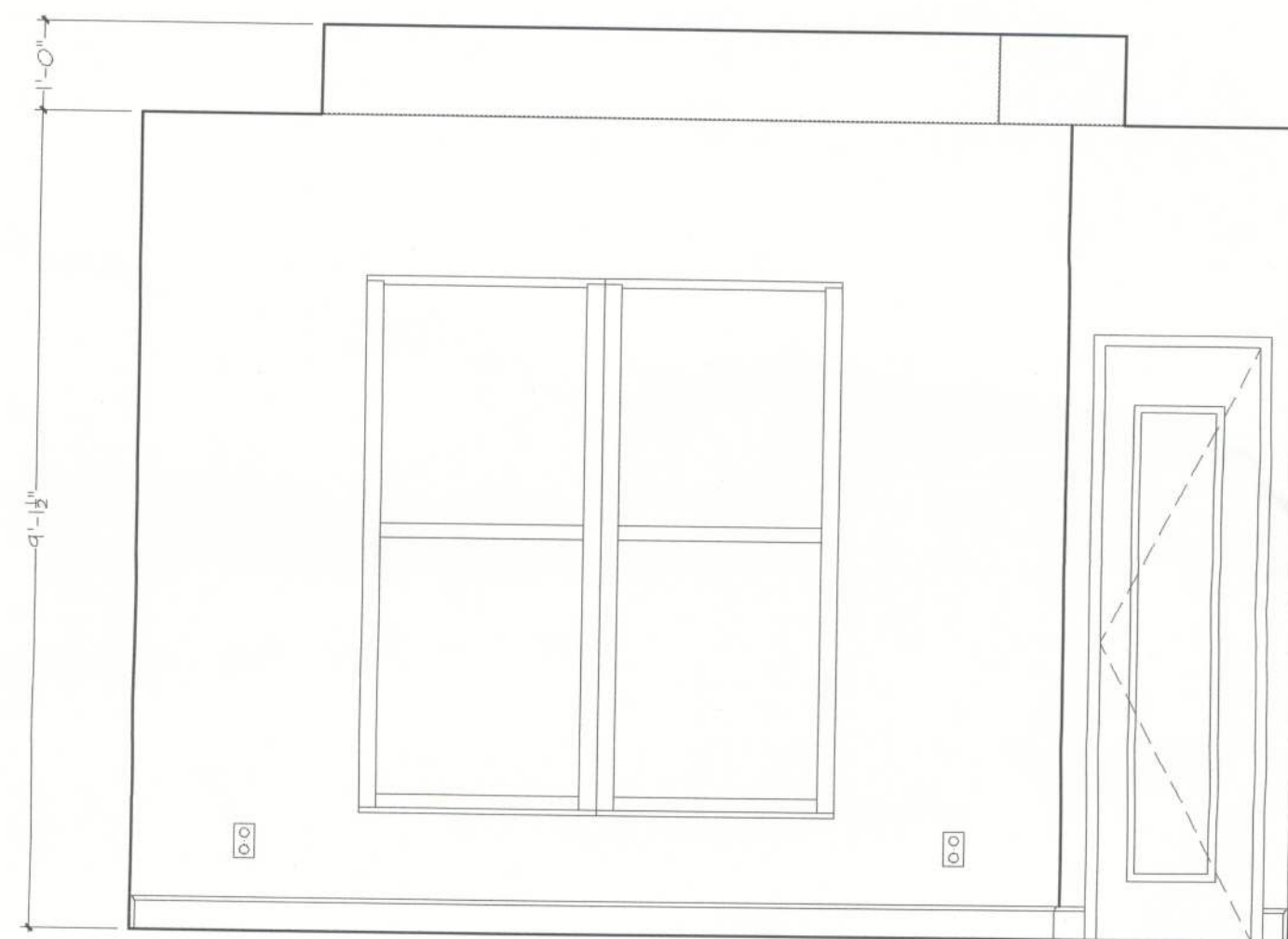
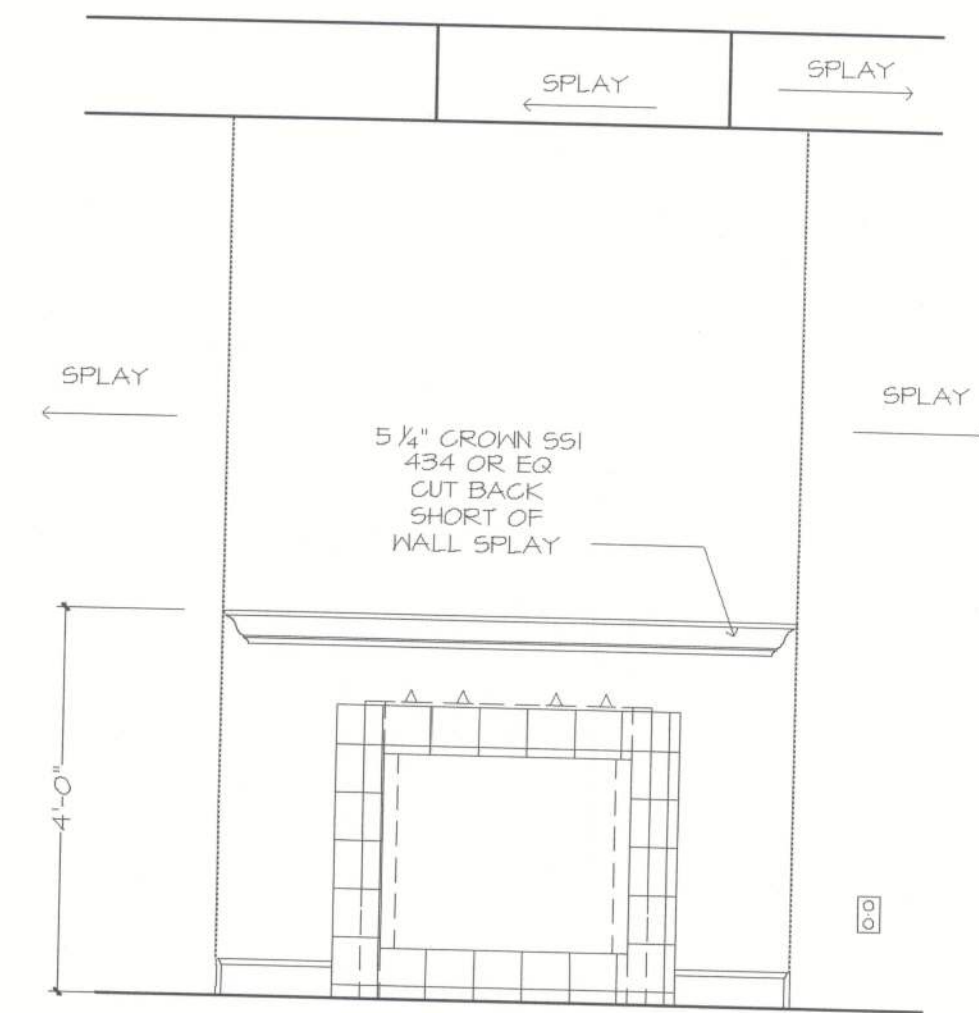


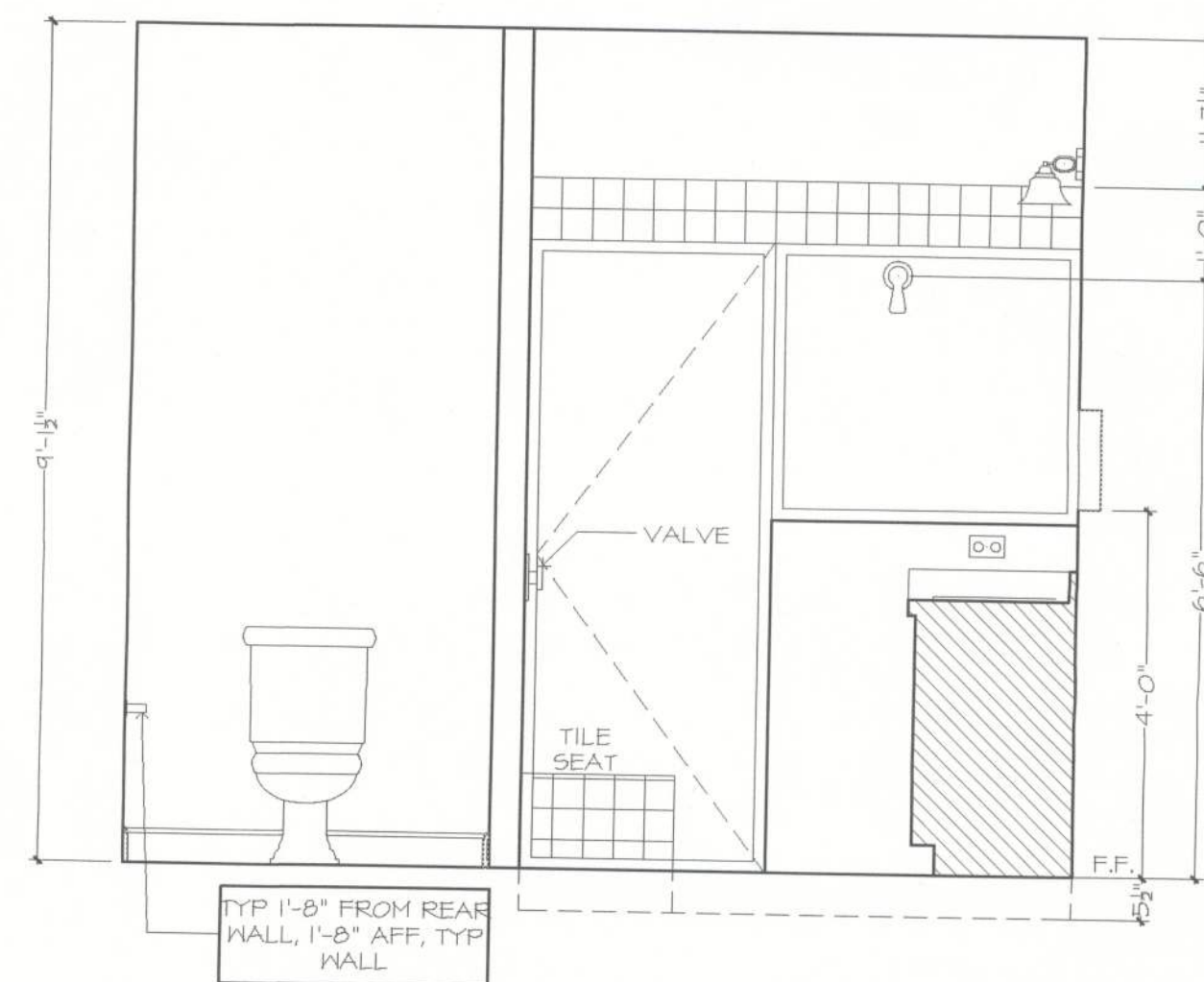
WALL "X"
CASUAL DINING



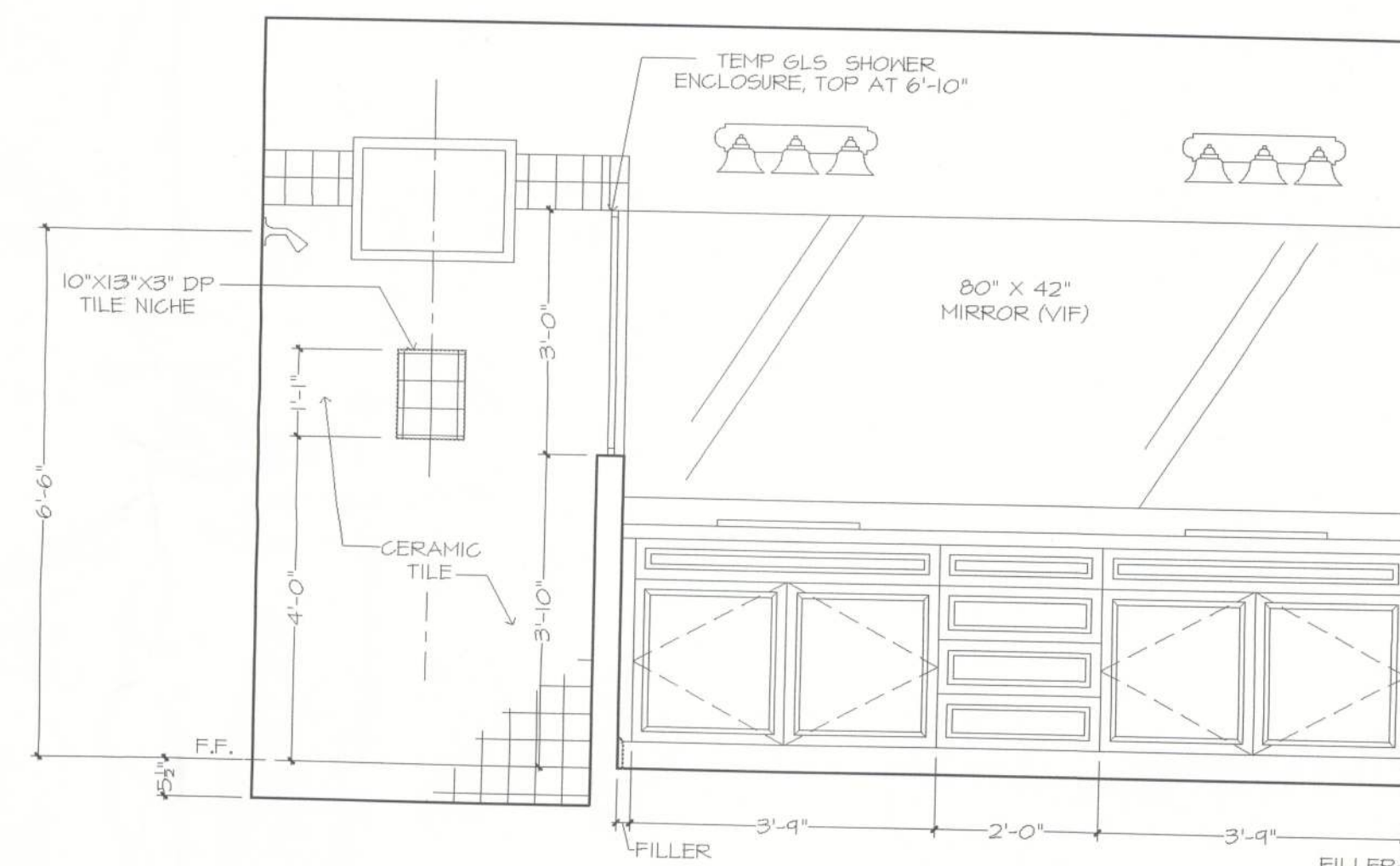
WALL "W"
GREAT ROOM



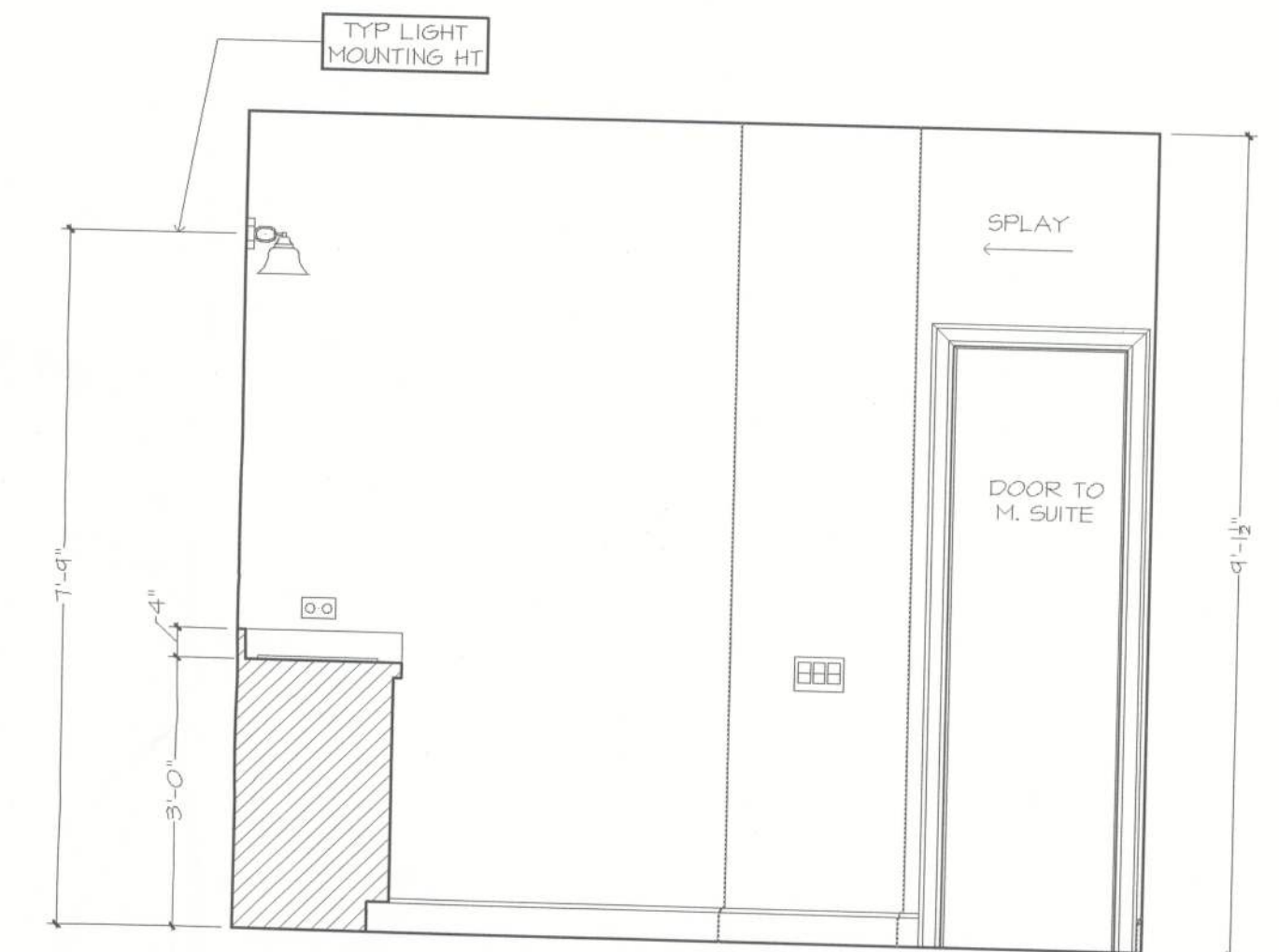
WALL "X"
M. SUITE



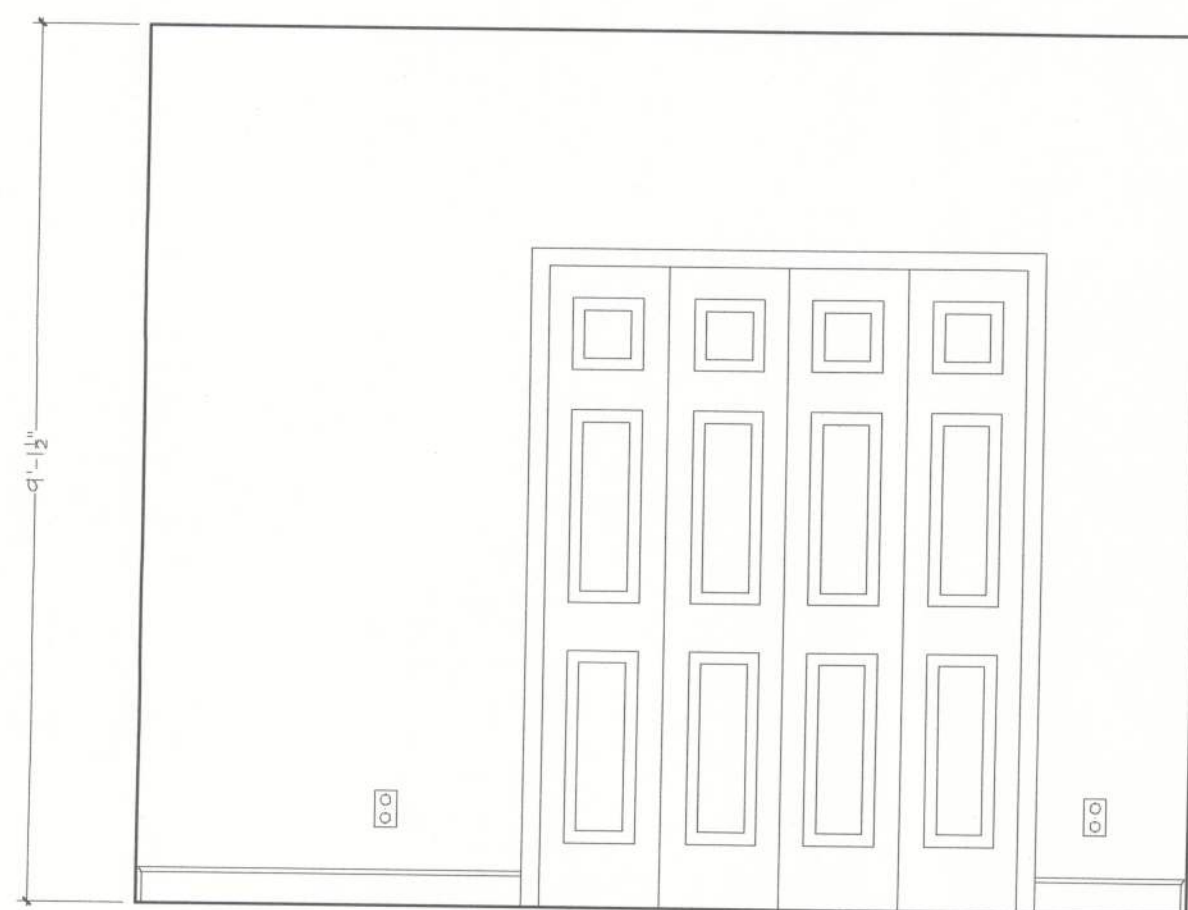
WALL "Z"
M. BATH



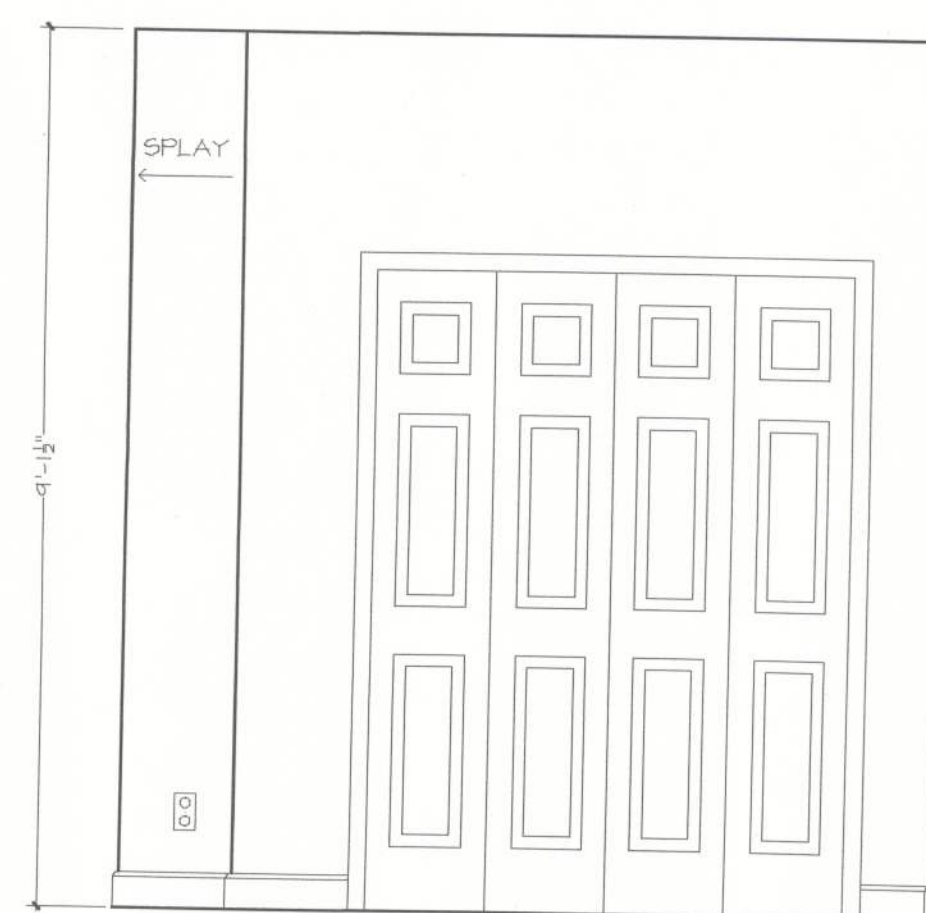
WALL "W"



WALL "X"



WALL "X"
BEDROOM 2



WALL "X"
BEDROOM 3

GENERAL NOTES:

CABINET ELEVATIONS AND LIGHTING ARE GRAPHIC REPRESENTATIONS ONLY. REFERENCE SHOULD BE MADE TO THE ELECTRICAL SHEET, CABINET MFR. DRAWINGS AND SPECS FOR FURTHER INFORMATION.

REFER TO CABINET SHOP DRAWINGS FOR CABINET & VANITY TOP DIMENSIONS.

FOR STEPPED UPPER CABINETS, IF MODULAR CABINETS ARE SELECTED AND NOT AVAILABLE IN SPECIFIED DEPTHS THE WALLS BEHIND CABINETS WILL NEED TO BE BUILT OUT TO OBTAIN SPECIFIED DEPTH.

THE TOE KICK IS 4".

PLUMBING, TILE, BASE MLDG, DOOR CASING & DECORATIVE LIGHTING & DECORATIVE MIRRORS ARE ILLUSTRATED FOR LOCATION PURPOSES ONLY. PLEASE REFER TO COMMUNITY STANDARDS FOR SIZES & SPECS.