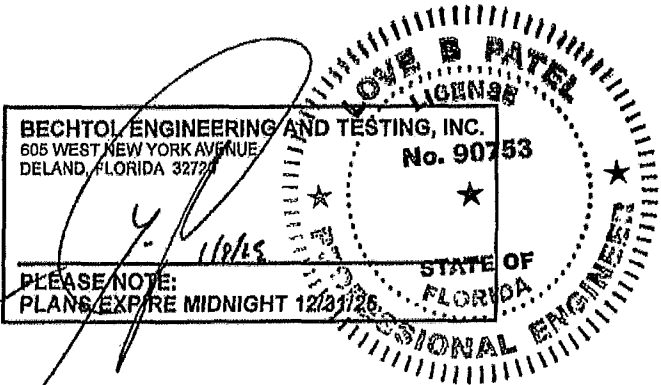


FBC APPROVED PRODUCTS LIST					MAXIMUM ALLOWABLE WIND SPEED			TABLE 1 RAFTER FRAME, END POST, GROUND ANCHOR AND PANEL FASTENER SPACING SPECIFICATIONS						
PRODUCT CATEGORY	SUB CATEGORY	MANUFACTURER	APPROVAL No. & DATE	QA EXPIRATION DATE	OPEN	ENCLOSED	PARTIALLY ENCLOSED	RISK CATEGORY	WIND EXPOSURE CATEGORY	ULTIMATE WIND SPEED (MPH)	NOMINAL WIND SPEED (MPH)	MAXIMUM POST / RAFTER SPACING (FEET)	AVERAGE FASTENER SPACING ON-CENTERS ALONG RAFTERS OR PURLINS, AND POSTS OR GIRTS (INCHES)	
													INTERIOR POSTS/RAFTERS	END POSTS/RAFTERS
STRUCTURAL COMPONENTS	ROOF DECK	CAROLINA CARPORTS, INC 26 Gauge AG Panel	FL6596.1-R7 12/12/23	04/05/27	180	180	180	I	B or C	110 TO 150	89 TO 116	5.0	6	6
STRUCTURAL COMPONENTS	STRUCTURAL WALL	CAROLINA CARPORTS, INC. 26 Gauge AG Panel	FL6702.1-R7 12/12/23	03/14/27	180	180	180			151 TO 170	117 TO 132	4.0	6	6
STRUCTURAL COMPONENTS	STRUCTURAL WALL	CAROLINA CARPORTS, INC. 26 Gauge Dutch Lap Wall Panel	FL6702.3-R7 12/12/23 **	03/14/27	N/A	164	143	NOTES: 1. Specifications applicable to 26 gauge metal roof and wall panels fastened directly to 12 or 14 gauge steel tube framing, or 18 gauge hat channel roof purlins 2. Specifications applicable only for mean roof height of 20 feet or less, and roof slopes of 7° to 27° (1.5:12 to 6:12 pitch) Spacing requirements for other roof heights and/or slopes may vary.						
STRUCTURAL COMPONENTS	STRUCTURAL WALL	CRAWL SPACE DOOR SYSTEMS, INC. 16x8 Flood Vent	FL29622.1-R2 07/24/24	09/30/25	N/A	N/A	N/A							
EXTERIOR DOORS	SWINGING	ELIXIR DOOR AND METAL COMPANY Series 402-14	FL17996.3-R3 12/26/23	08/26/25	N/A	139	139	GROUND ANCHOR SCHEDULE						
EXTERIOR DOORS	SWINGING	ELIXIR DOOR AND METAL COMPANY Series 407	FL17996 5-R3 12/26/23	08/19/25	N/A	174	155							
EXTERIOR DOORS	ROLL-UP	CAROLINA CARPORTS, INC Steel Roll Up Sheet Door (8' Max. Width)	FL16806.2-R6 12/13/23	04/05/27	N/A	180	180	ULTIMATE WIND SPEED (mph)						
EXTERIOR DOORS	ROLL-UP	CAROLINA CARPORTS, INC Steel Roll-Up Sheet Door - (10' Max. Width)	FL16806 4-R6 12/13/23	04/05/27	N/A	180	172							
EXTERIOR DOORS	ROLL-UP	CAROLINA CARPORTS, INC Steel Roll-Up Sheet Door - (12' Max. Width)	FL16806.1-R6 12/13/23	04/05/27	N/A	179	154	BUILDING WIDTH (feet)						
EXTERIOR DOORS	ROLL-UP	CAROLINA CARPORTS, INC Steel Roll-Up Sheet Door - (16' Max. Width)	FL41335.1-R1 12/13/23	04/05/27	N/A	163	142							
WINDOWS	SINGLE HUNG	CGI WINDOWS AND DOORS Model SH 4000A	FL23358 2-R8 04/16/24	12/31/32	N/A	174	156	DETAILS 1C AND 1D SHOWN ON SHEET 4 OF 6						
NOTES 1. DOORS AND WINDOWS SHOWN MAY BE SUBSTITUTED FOR DIFFERENT PRODUCT LINES AND/OR MODELS, PROVIDED THE FOLLOWING CONDITIONS ARE MET A. PRODUCT SHALL HAVE A VALID FBC PRODUCT APPROVAL B. COMPONENTS ARE INSTALLED ACCORDING TO MANUFACTURER'S INSTALLATION REQUIREMENTS. C. MEETS AND OR EXCEEDS THE MINIMUM DESIGN CRITERIA OF THE ABOVE APPROVED PRODUCT LIST. 2. FRAMING CONNECTIONS FOR DOOR AND WINDOW FRAMES REMAIN THE SAME FOR SUBSTITUTED PRODUCTS. HEADERS AND WINDOW RAILS MAY BE RAISED OR LOWERED AS NECESSARY TO ACCOMMODATE SUBSTITUTED PRODUCT ** MAXIMUM POST SPACING FOR DUTCH LAP IS 4.0'														

GENERAL NOTES:

1. THESE PLANS PERTAIN ONLY TO THE STRUCTURE, INCLUDING MAIN WIND FORCE RESISTING SYSTEM, COMPONENTS AND CLADDING, AND BASE RAIL ANCHORAGE. OTHER DESIGN ISSUES, INCLUDING BUT NOT LIMITED TO PLUMBING, ELECTRICAL, INGRESS/EGRESS, PROPERTY SET-BACKS, FINISH FLOOR ELEVATION AND SLOPE, OR OTHER LOCAL ZONING REQUIREMENTS ARE THE RESPONSIBILITY OF OTHERS.
2. THESE STRUCTURES ARE DESIGNED AS NON-HABITABLE UTILITY/STORAGE BUILDINGS (RISK CATEGORY I ONLY) CAPABLE OF SUPPORTING DEAD LOAD OF THE STRUCTURE AND APPLICABLE LIVE AND WIND LOADS. IMPROVEMENTS NOT SPECIFICALLY ADDRESSED HEREIN, INCLUDING DOORS, WINDOWS, OR OTHER COMPONENTS NOT LISTED IN THE FBC APPROVED PRODUCTS LIST (THIS SHEET), AND NOT PROVIDED AND INSTALLED BY CAROLINA CARPORTS, INC., WHICH EXERT ADDITIONAL LOADS ON THE STRUCTURE SHALL BE AT THE OWNER'S RISK. BECHTOL ENGINEERING AND TESTING, INC., SHALL NOT BE RESPONSIBLE FOR STRUCTURAL DAMAGE OR FAILURE DUE TO THE APPLICATION OF ADDITIONAL LOADS
3. ALL STEEL TUBING SHALL BE 50 KSI GALVANIZED STEEL. ALL FASTENERS SHALL BE GALVANIZED OR STAINLESS STEEL OR ZINC PLATED.
4. ALL COMPONENTS AND CLADDING SHALL BE INSTALLED ACCORDING TO MANUFACTURER'S INSTALLATION INSTRUCTIONS, AND SHALL MEET THE DESIGN PRESSURES REQUIRED BY THE FLORIDA BUILDING CODE (FBC) AT THE LOCATION OF THE BUILDING WITHIN THE STATE OF FLORIDA.
5. ALL FIELD FRAMING CONNECTIONS SHALL BE #12-14 x 3/4" SELF DRILLING SCREWS WITHOUT CONTROL SEAL WASHER. ALL SHOP FRAMING CONNECTIONS SHALL BE WELDED
6. CONCRETE SHALL HAVE A MINIMUM COMPRESSIVE STRENGTH OF 2500 PSI AT 28 DAYS. THE REINFORCING STEEL SHALL BE MINIMUM GRADE 40. CONCRETE SLAB FOUNDATIONS SHALL BE REINFORCED WITH 6X6-W1.4XW1.4 WELDED WIRE FABRIC COMPLYING WITH ASTM A 185, OR WITH SYNTHETIC FIBER REINFORCEMENT COMPLYING WITH ASTM C1116.
7. BASE RAIL GROUND ANCHOR REQUIREMENTS. ONE WITHIN 6" OF EVERY POST LOCATION, AND BOTH SIDES OF OPENINGS WHERE BASE RAIL IS ABSENT. GROUND ANCHORS ARE NOT REQUIRED FOR CONCRETE FOOTING AND/OR CONCRETE SLAB CONSTRUCTION. SEE GROUND ANCHOR SCHEDULE (THIS SHEET) FOR SPECIFIC GROUND ANCHOR SIZE REQUIREMENTS.
8. CONCRETE ANCHORS SHALL BE TAPCON REDHEAD LDT 1/2" x 5" OR EQUIVALENT.
9. POST/RAFTER BRACING: BRACE ON EVERY POST/RAFTER CONNECTION, EXCEPT FOR END WALLS.
10. SLAB FOUNDATION SUBGRADE SOILS SHALL BE TERMITE TREATED AND COVERED WITH 6 MIL VAPOR RETARDER PER SECTION R318.1 OF THE FLORIDA BUILDING CODE EIGHTH EDITION (2023) - RESIDENTIAL, AND SECTION 1816.1 OF THE FLORIDA BUILDING CODE EIGHTH EDITION (2023) - BUILDING. SOIL LOAD BEARING PRESSURE OF 2000PSF IS ASSUMED
11. 14 GA FRAMING: 2-1/2" x 2-1/2" TUBE STEEL (TS) WITH 2-1/4" x 2-1/4" TS NIPPLES.
12 GA FRAMING: 2-1/4" x 2-1/4" TS WITH 2" x 2" TS NIPPLES
12. FOR CONTINUOUS REINFORCING, MINIMUM BAR OVERLAP SHALL BE 40 BARS DIAMETERS (25" FOR #6 REBAR)
13. TORNADO VELOCITY COMPLIANCE IS NOT REQUIRED FOR RISK I OR RISK II STRUCTURES PER SECTION R301.2.1.1 OF THE FLORIDA BUILDING CODE EIGHTH EDITION (2023)- RESIDENTIAL AND SECTION 1803.1.4 OF THE FLORIDA BUILDING CODE EIGHTH EDITION (2023) - BUILDING, AND ASCE 7-22.
14. ENCLOSED AREAS REQUIRING FLOOD OPENINGS MUST HAVE A MINIMUM OF TWO (2) OPENINGS ON EXTERIOR WALLS. OPENINGS SHOULD BE INSTALLED ON AT LEAST TWO (2) SIDES OF ENCLOSED AREA, WITH BASE OF OPENINGS SET WITHIN 1-FOOT OF THE HIGHER OF INTERIOR OR EXTERIOR GRADE. REQUIRED TOTAL NUMBER OF FLOOD VENTS NOTED IN THE FBC APPROVED PRODUCTS LIST SHALL BE BASED ON ONE (1) FLOOD VENT PER EVERY 305 SQUARE FEET OF ENCLOSED AREA. SEE TYPICAL FLOOD VENT FRAMING PLAN, SHEET 6 OF 6.

THIS IS TO CERTIFY THAT THE CALCULATIONS AND SPECIFICATIONS HEREIN HAVE BEEN PREPARED BY THE UNDERSIGNED PROFESSIONAL ENGINEER, AND ARE IN ACCORDANCE WITH THE REQUIREMENTS OF SECTION 1609 OF THE FLORIDA BUILDING CODE, EIGHTH EDITION (2023)



CAROLINA CARPORTS, INC.
GENERIC PLANS FOR USE IN THE STATE OF FLORIDA
UP TO 30' WIDE AND RISK CATEGORY I ONLY

BECHTOL ENGINEERING
AND TESTING, Inc.
CONSULTING GEOTECHNICAL, ENVIRONMENTAL, AND MATERIALS TESTING ENGINEERS
Certificate of Authorization No. 0005492

REVISIONS

DATE 1/2/2025

DRAWN CS

SCALE NTS

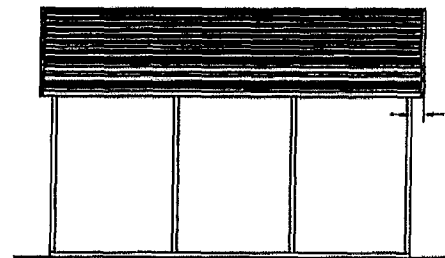
CHECKED CS / ID

PROJ. NO. G25001

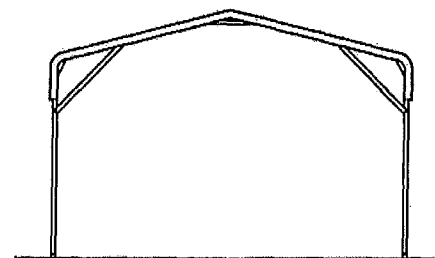
APPROVED TB / LP

SHEET 1 OF 6

BOW FRAME RAFTER OPEN CARPORT - HORIZONTAL ROOF

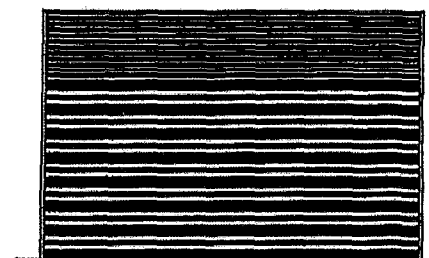


TYPICAL SIDE ELEVATION
NOT TO SCALE

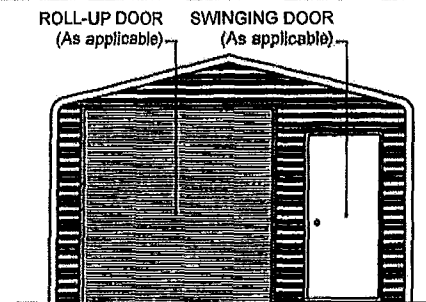


TYPICAL END ELEVATION
NOT TO SCALE

BOW FRAME RAFTER ENCLOSED BUILDING - HORIZONTAL ROOF

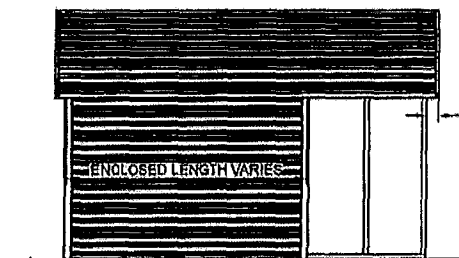


TYPICAL SIDE ELEVATION
NOT TO SCALE

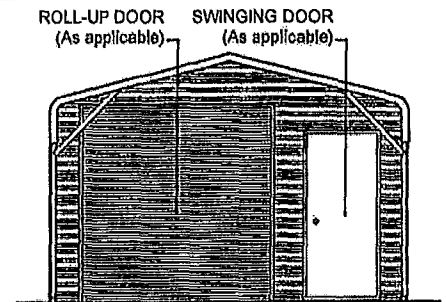


TYPICAL END ELEVATION
NOT TO SCALE

BOW FRAME RAFTER PARTIALLY OPEN / ENCLOSED BUILDING - HORIZONTAL ROOF

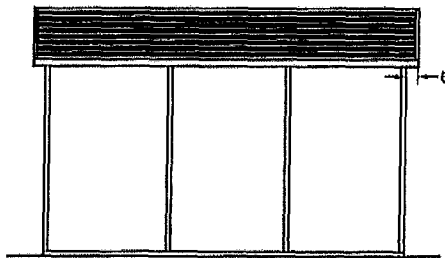


TYPICAL SIDE ELEVATION
NOT TO SCALE

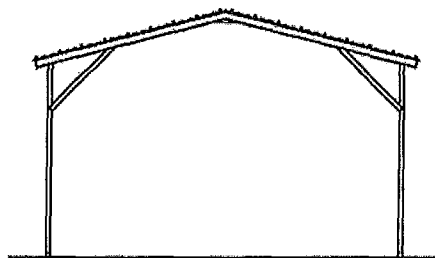


TYPICAL END ELEVATION
NOT TO SCALE

BOX EAVE FRAME RAFTER OPEN CARPORT - HORIZONTAL ROOF

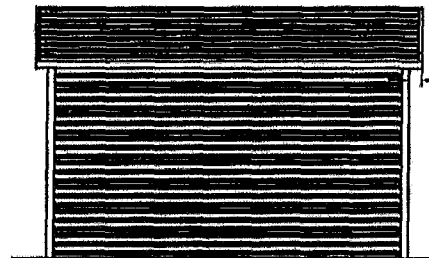


TYPICAL SIDE ELEVATION
NOT TO SCALE

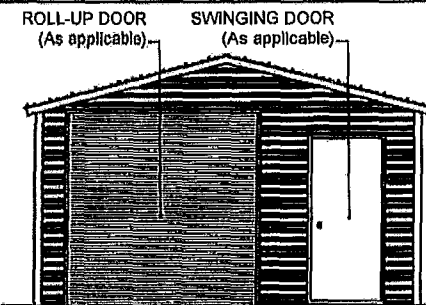


TYPICAL END ELEVATION
NOT TO SCALE

BOX EAVE FRAME RAFTER ENCLOSED BLDG - HORIZONTAL ROOF

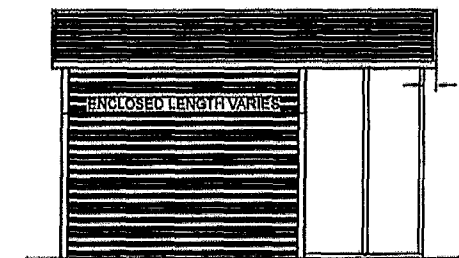


TYPICAL SIDE ELEVATION
NOT TO SCALE

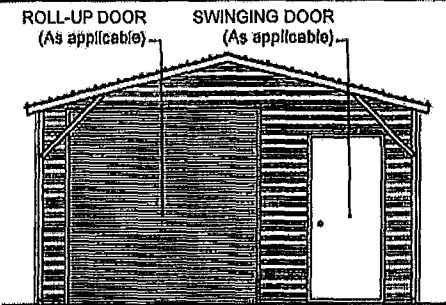


TYPICAL END ELEVATION
NOT TO SCALE

BOX EAVE FRAME RAFTER PARTIALLY OPEN / ENCLOSED BLDG - HORIZONTAL ROOF

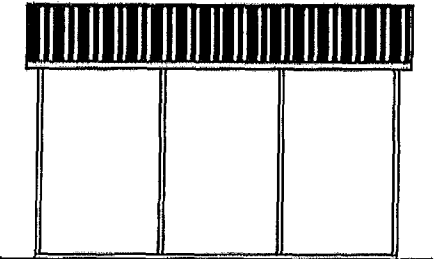


TYPICAL SIDE ELEVATION
NOT TO SCALE

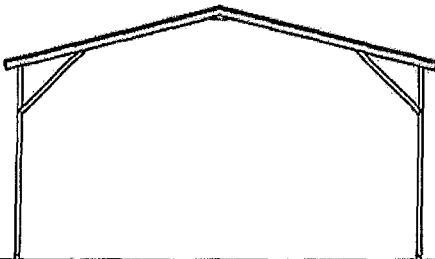


TYPICAL END ELEVATION
NOT TO SCALE

BOX EAVE FRAME RAFTER OPEN CARPORT - VERTICAL ROOF

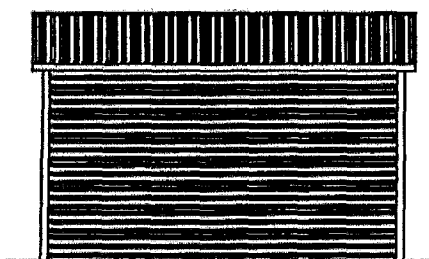


TYPICAL SIDE ELEVATION
NOT TO SCALE

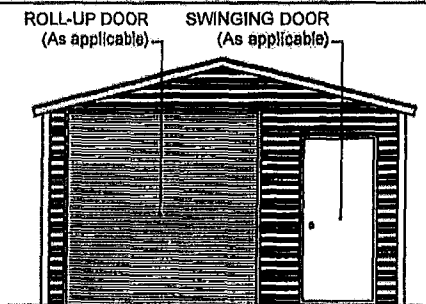


TYPICAL END ELEVATION
NOT TO SCALE

BOX EAVE FRAME RAFTER ENCLOSED BLDG - VERTICAL ROOF

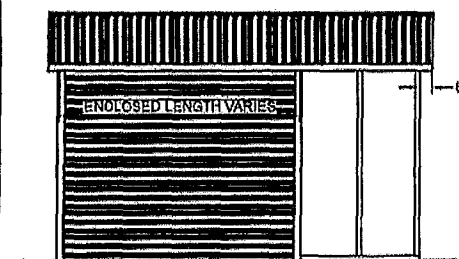


TYPICAL SIDE ELEVATION
NOT TO SCALE

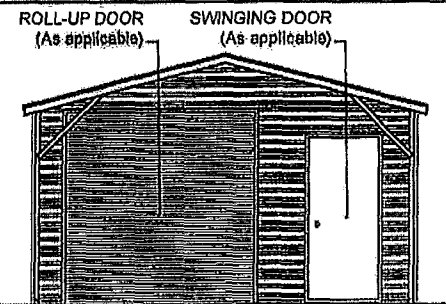


TYPICAL END ELEVATION
NOT TO SCALE

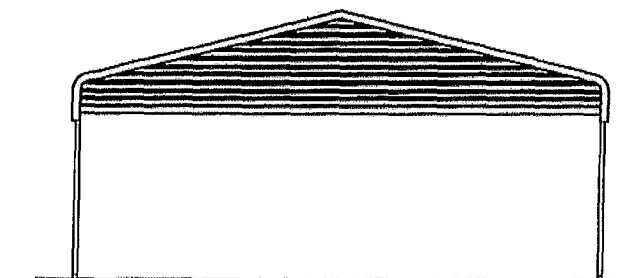
BOX EAVE FRAME RAFTER PARTIALLY OPEN / ENCLOSED BLDG - VERTICAL ROOF



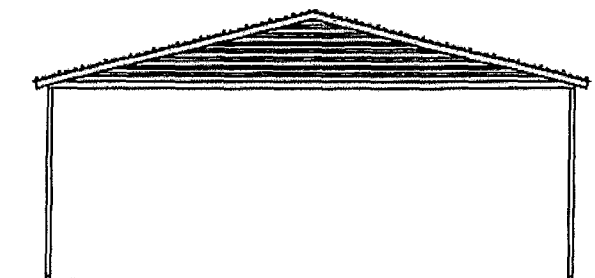
TYPICAL SIDE ELEVATION
NOT TO SCALE



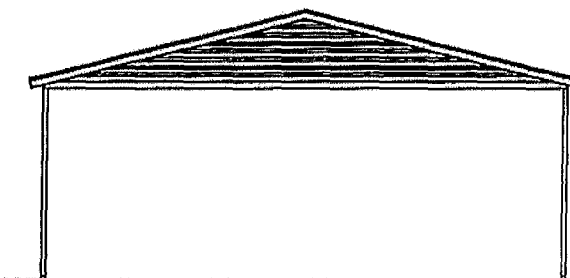
TYPICAL END ELEVATION
NOT TO SCALE



TYPICAL BOW RAFTER GABLE END ELEVATION
NOT TO SCALE



TYPICAL BOX EAVE RAFTER GABLE END ELEVATION
HORIZONTAL ROOF
NOT TO SCALE



TYPICAL BOX EAVE RAFTER GABLE END ELEVATION
VERTICAL ROOF
NOT TO SCALE

BECHTOL ENGINEERING AND TESTING, INC.
605 WEST NEW YORK AVENUE
DELAND, FLORIDA 32728

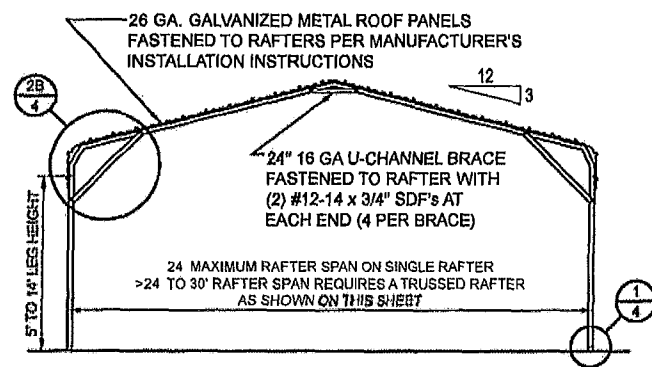
PLEASE NOTE:
PLANS EXPIRE MIDNIGHT 12/31/25

CAROLINA CARPORTS, INC.

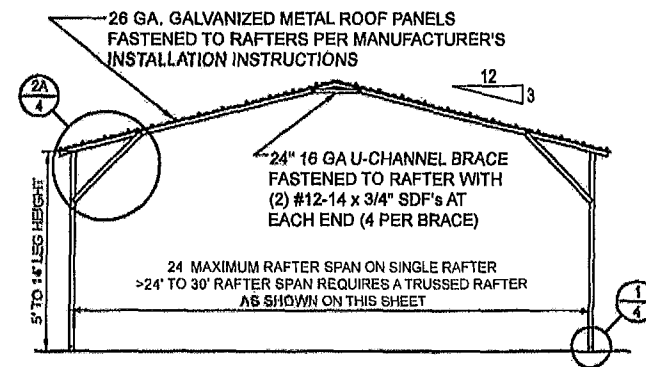
**GENERIC PLANS FOR USE IN THE STATE OF FLORIDA
UP TO 30' WIDE AND RISK CATEGORY I ONLY**

**BECHTOL ENGINEERING
AND TESTING, Inc.**
CONSULTING GEOTECHNICAL, ENVIRONMENTAL, AND MATERIALS TESTING ENGINEERS
Certificate of Authorization No. 00050492

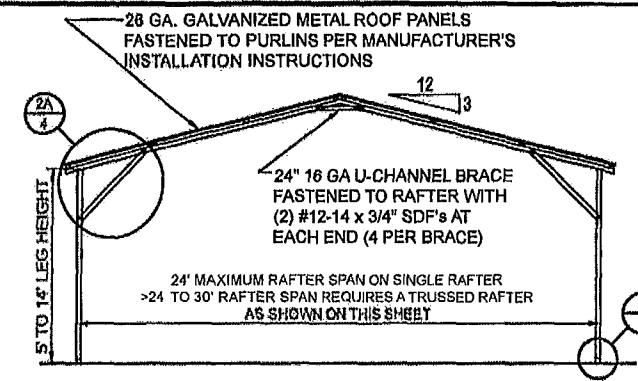
REVISED	DATE	1/2/2025
DRAWN	CS	SCALE: NTS
CHECKED	CS / ID	PROJ. NO. G25001
APPROVED	TB / LP	SHEET 2 OF 6



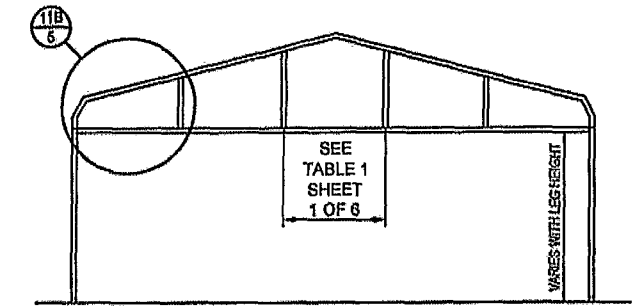
TYPICAL INTERIOR POST/RAFTER FRAME SECTION - BOW FRAME
NOT TO SCALE



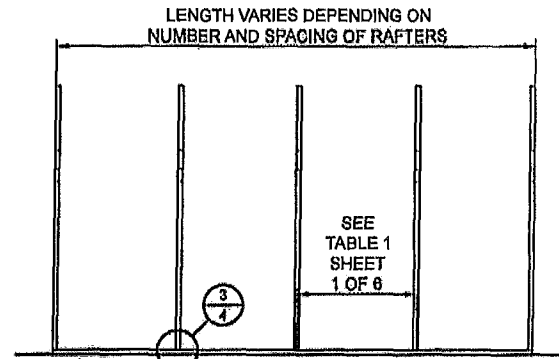
TYPICAL INTERIOR POST/RAFTER FRAME SECTION - HORIZONTAL ROOF - BOX EAVE
NOT TO SCALE



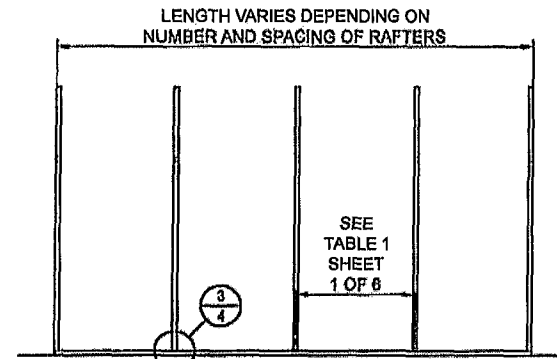
TYPICAL INTERIOR POST/RAFTER FRAME SECTION - VERTICAL ROOF - BOX EAVE
NOT TO SCALE



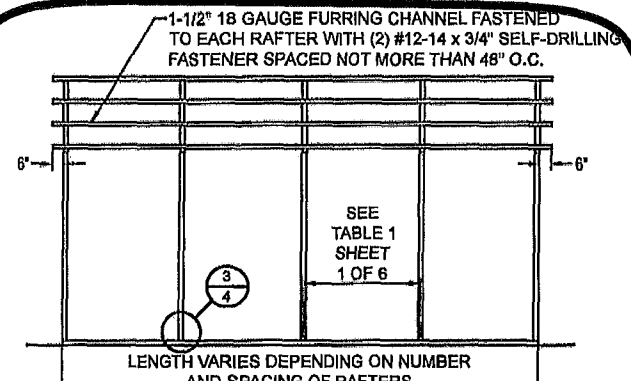
TYPICAL BOW RAFTER GABLE END FRAMING PLAN
NOT TO SCALE



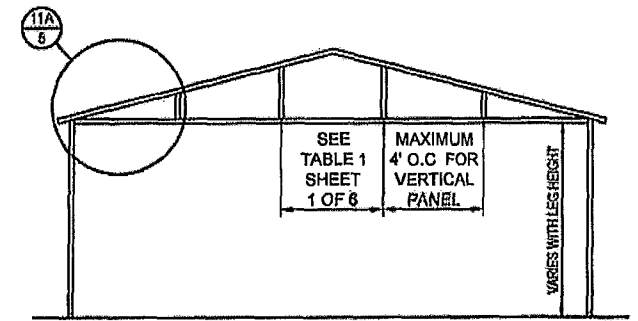
TYPICAL POST/RAFTER FRAMING PLAN - BOW FRAME
NOT TO SCALE



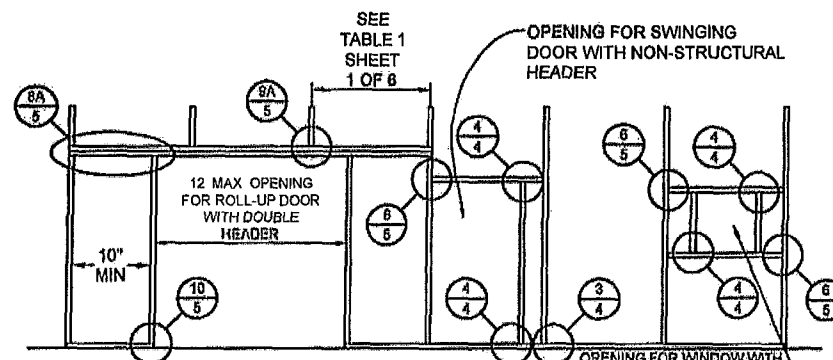
TYPICAL POST/RAFTER FRAMING PLAN - BOX EAVE
NOT TO SCALE



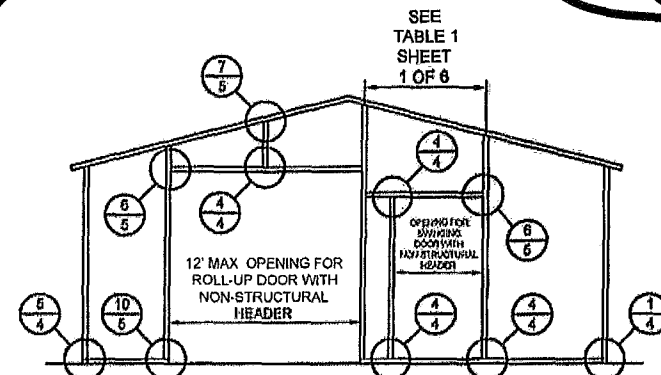
TYPICAL POST/RAFTER FRAMING PLAN - VERTICAL ROOF
NOT TO SCALE



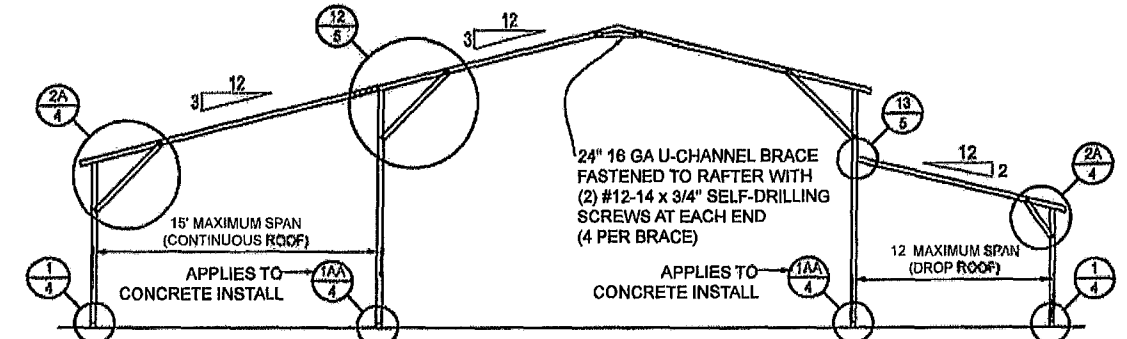
TYPICAL BOX EAVE RAFTER GABLE END FRAMING PLAN
NOT TO SCALE



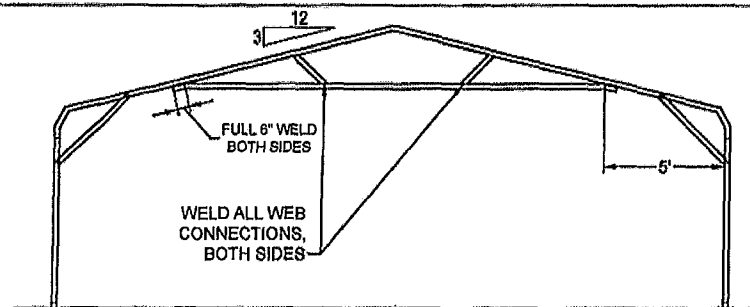
TYPICAL SIDE WALL OPENINGS FRAMING PLAN
NOT TO SCALE



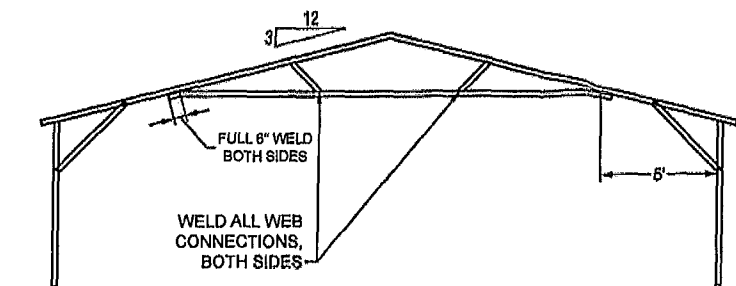
TYPICAL END WALL OPENINGS POST/RAFTER FRAMING PLAN
NOT TO SCALE



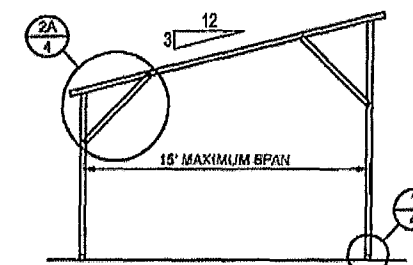
TYPICAL LEAN-TO OPTIONS FRAMING PLAN (BOTH OPTIONS SHOWN)
NOT TO SCALE (BOX EAVE RAFTER SHOWN, ONLY STANDARD LEAN-TO IS APPLICABLE TO BOW FRAME RAFTER)



OPTIONAL 24'-1\"/>



OPTIONAL 24'-1\"/>



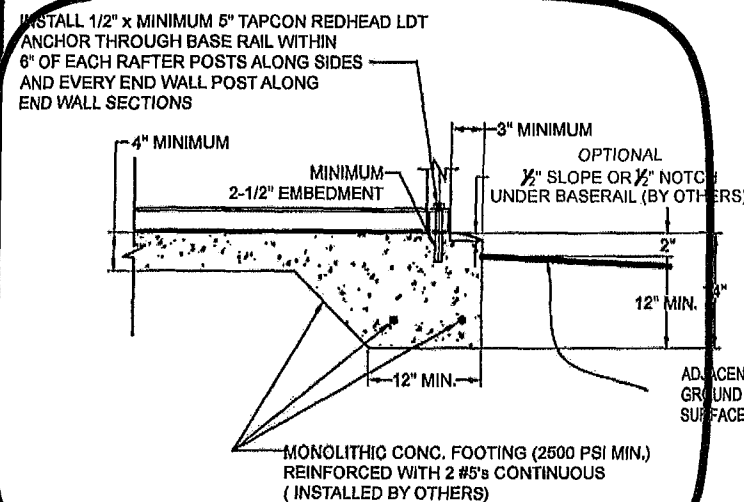
FREESTANDING LEAN-TO FRAMING PLAN
NOT TO SCALE

BECHTOL ENGINEERING AND TESTING, INC.
605 WEST NEW YORK AVENUE
DELAND, FLORIDA 32720

PLEASE NOTE
PLANS EXPIRE MIDNIGHT 12/31/25

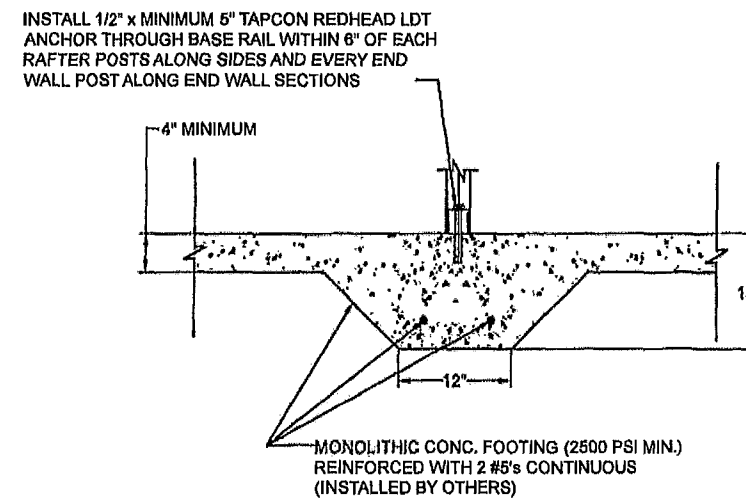
CAROLINA CARPORTS, INC.
GENERIC PLANS FOR USE IN THE STATE OF FLORIDA
UP TO 30' WIDE AND RISK CATEGORY I ONLY

	REVISION:	DATE	1/2/2025
	DRAWN: CS	SCALE:	NTS
	CHECKED: CS / ID	PROJ. NO.:	G25001
	APPROVED: TB / LP		SHEET 3 OF 6



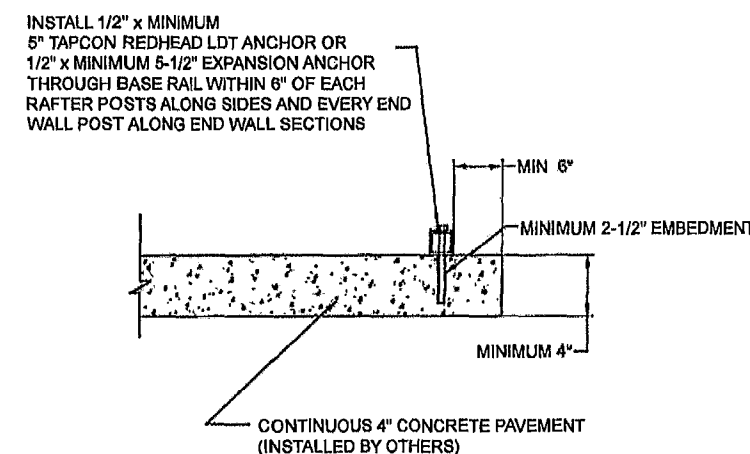
1A CONCRETE BASE RAIL ANCHORAGE

Not To Scale



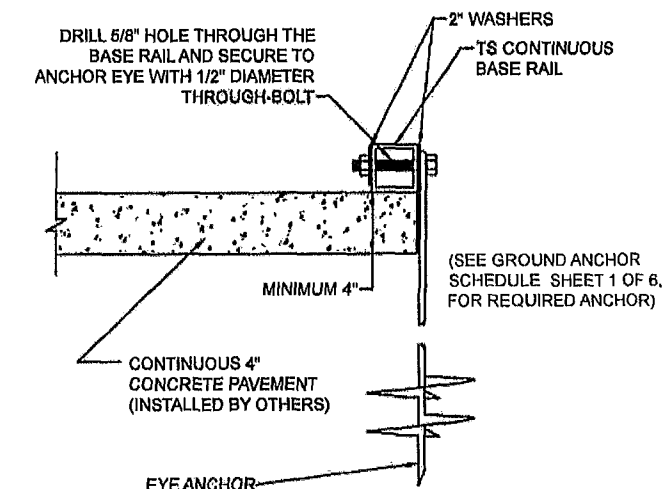
1AA THICKENED MONOLITHIC CONCRETE BASE RAIL ANCHORAGE FOR SHARED POST

Not To Scale



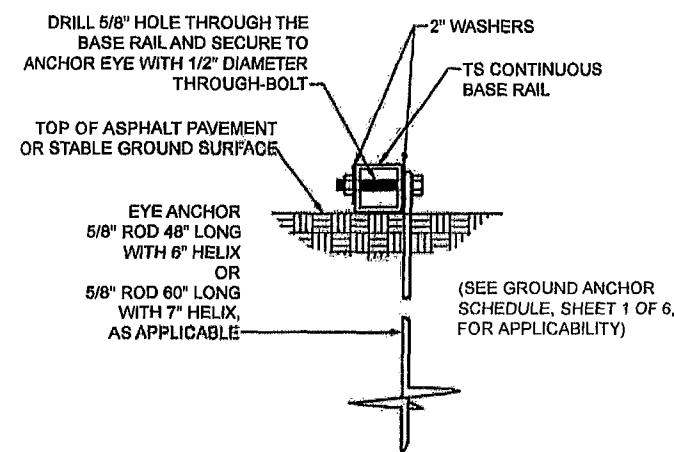
1B CONCRETE BASE RAIL ANCHORAGE

Not To Scale (OPTIONAL - OPEN CARPORTS ONLY)



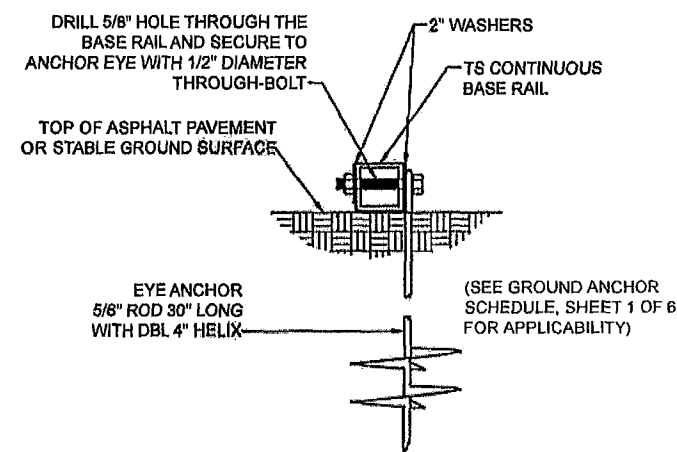
1C CONCRETE BASE RAIL ANCHORAGE

Not To Scale (ALSO UTILIZE WHERE SLAB EDGE DISTANCE DOES NOT MEET MINIMUM EDGE DISTANCE SHOWN IN DETAIL 1B)



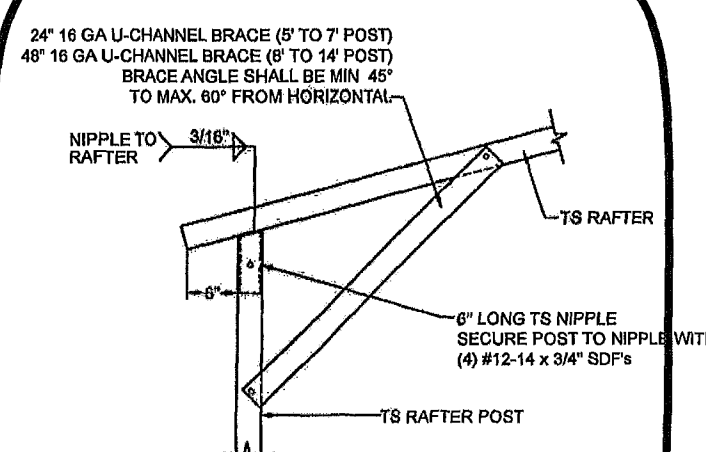
1D BASE RAIL DEEP ANCHORAGE

Not To Scale



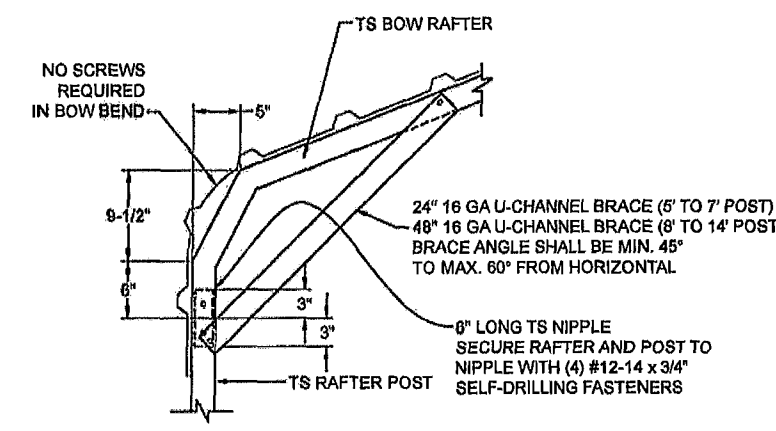
1E BASE RAIL ANCHORAGE

Not To Scale



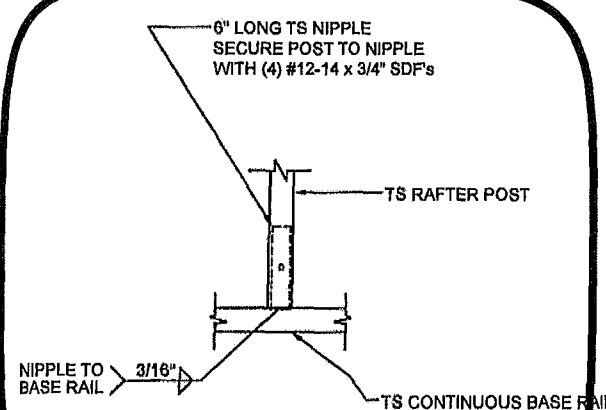
2A BOX EAVE RAFTER/POST DETAIL

Not To Scale



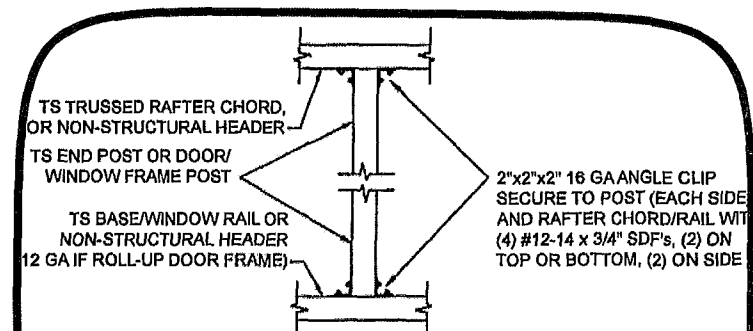
2B BOW RAFTER/POST DETAIL

Not To Scale



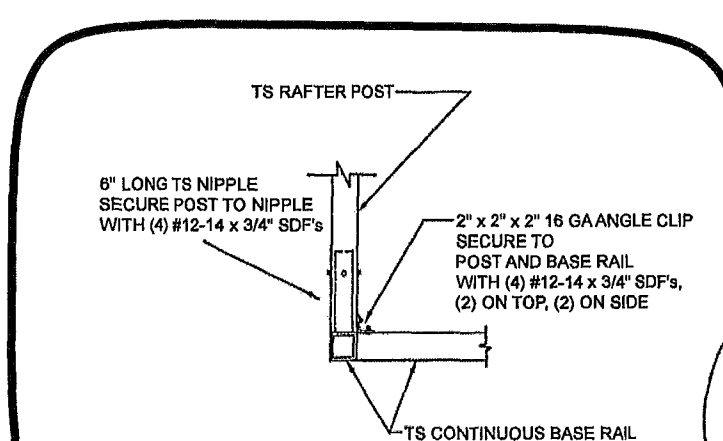
3 POST/BASE RAIL CONN. DETAIL

Not To Scale



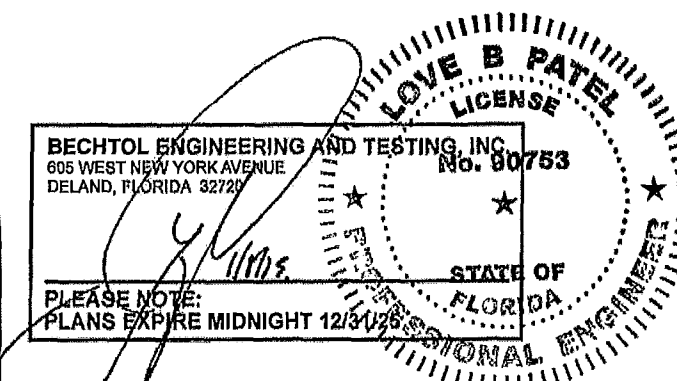
4 POST TO RAIL, TRUSS CHORD, OR NON-STRUCTURAL HEADER CONN. DETAIL

Not To Scale



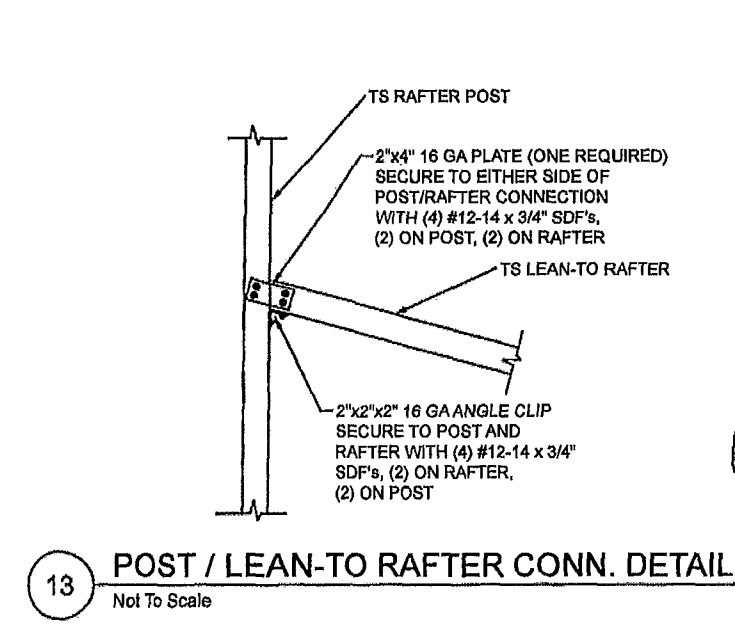
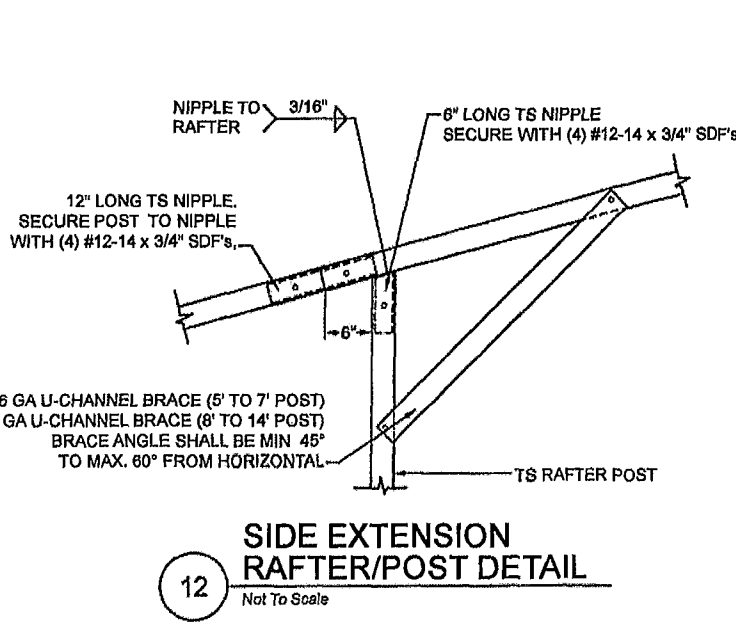
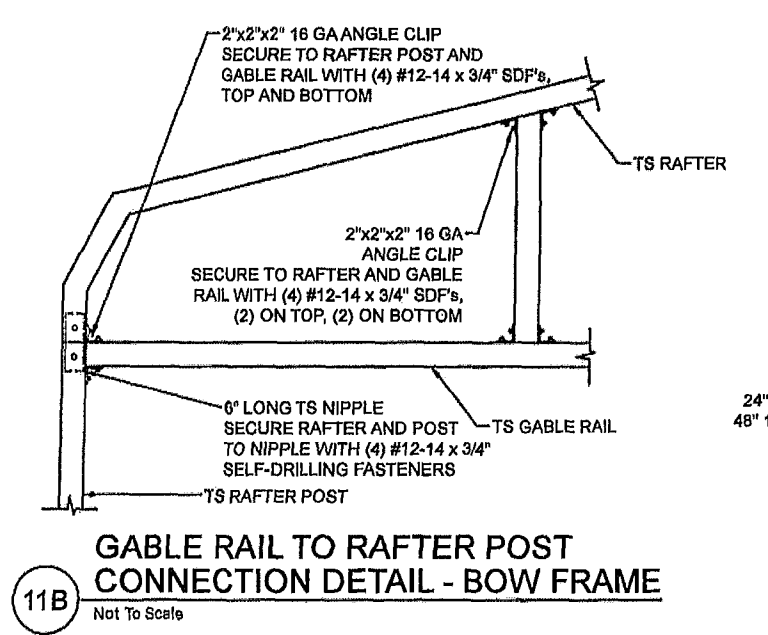
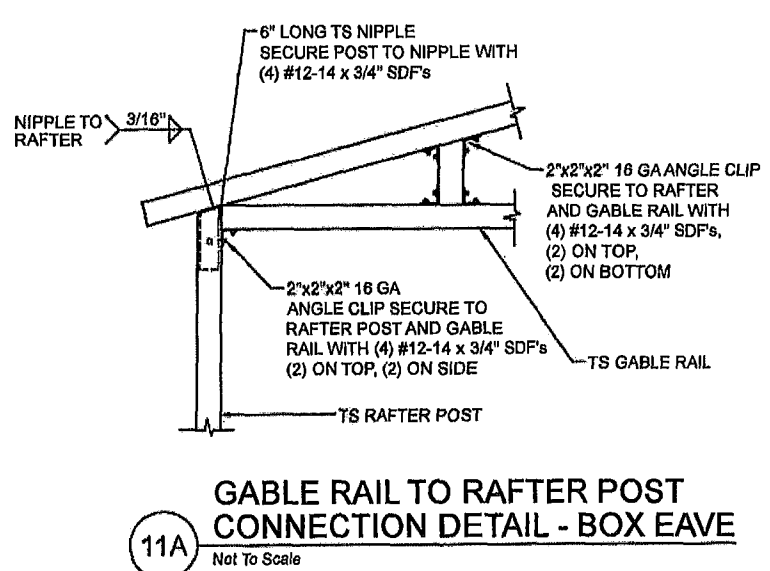
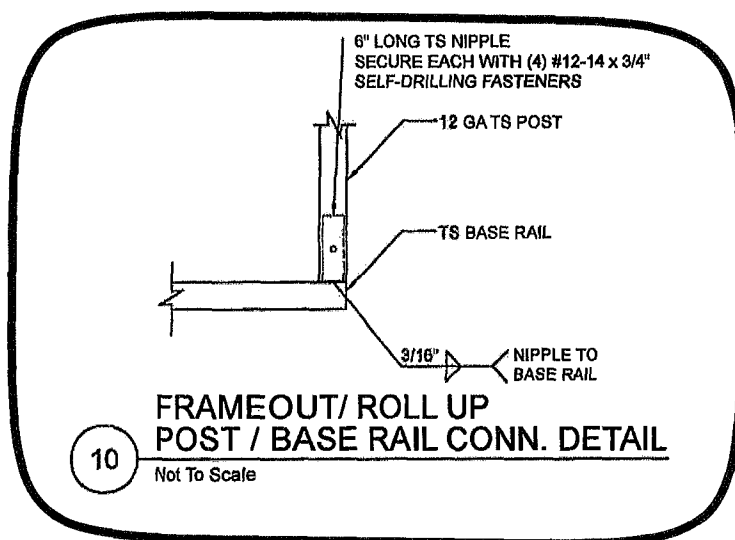
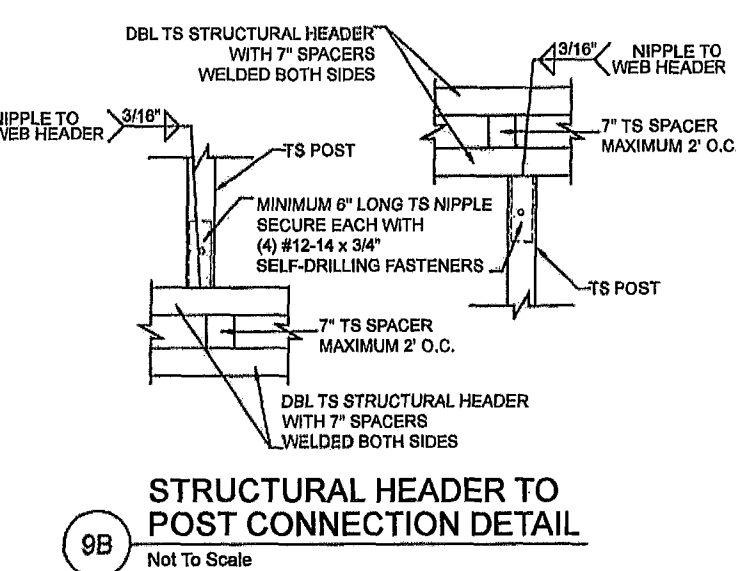
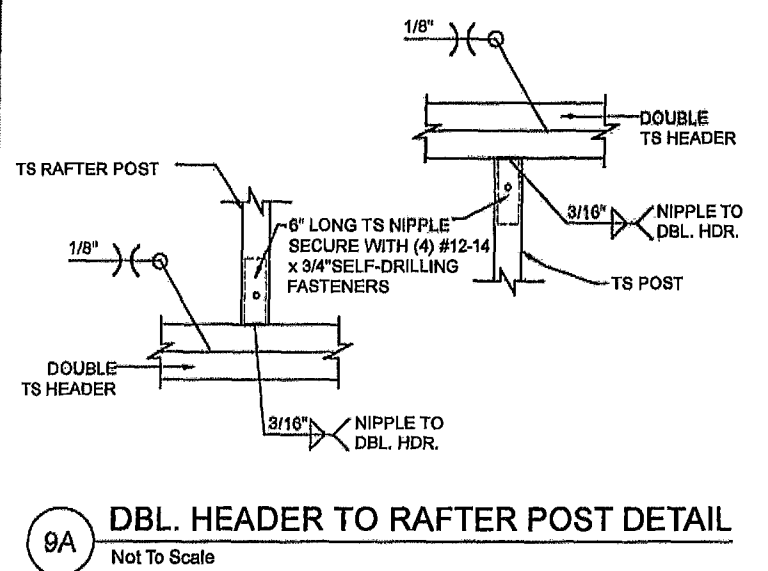
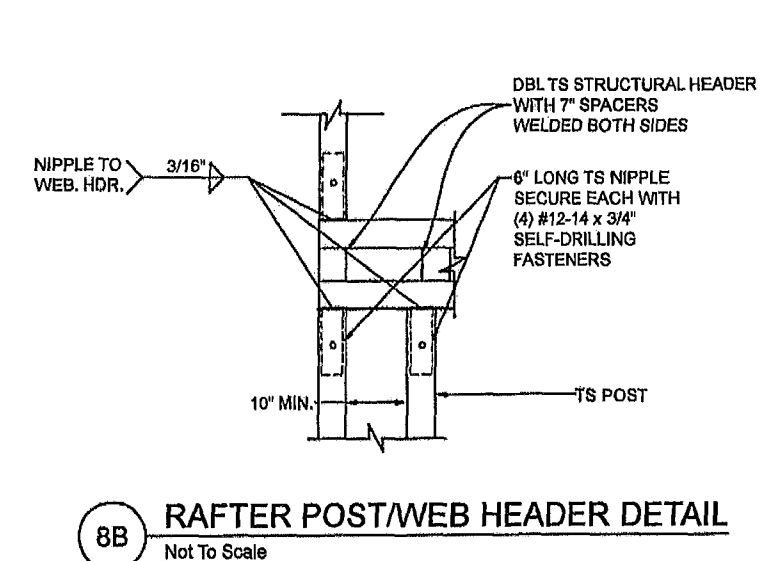
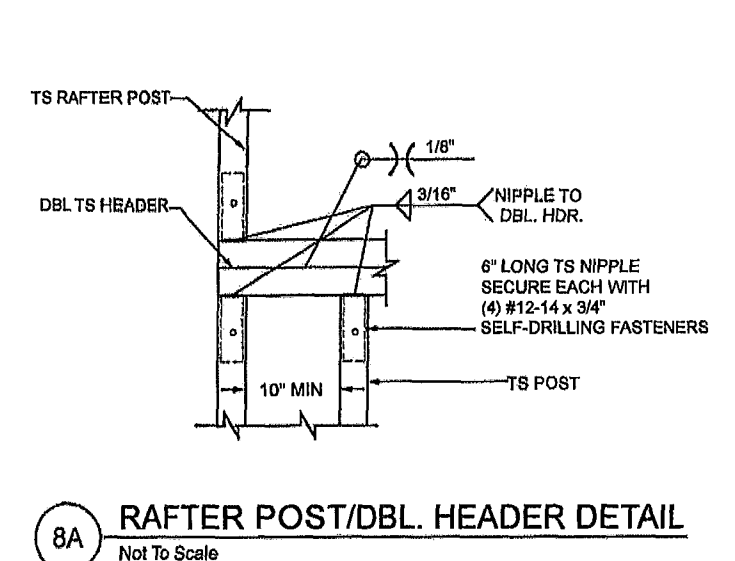
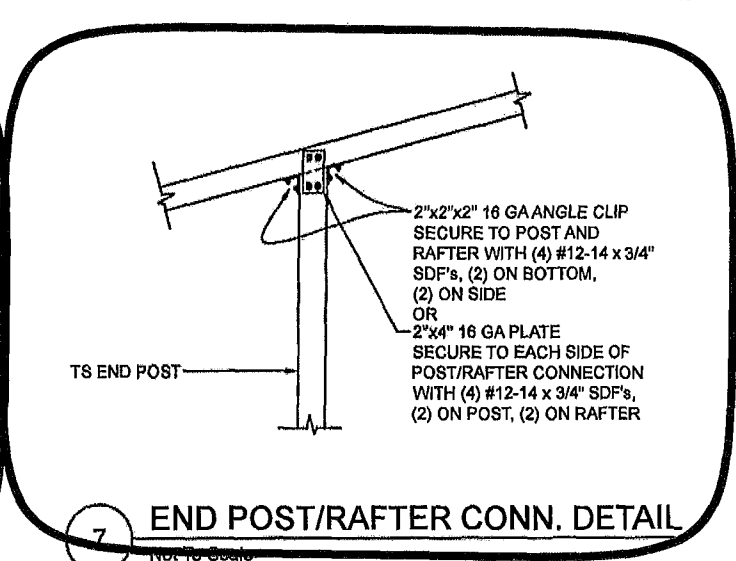
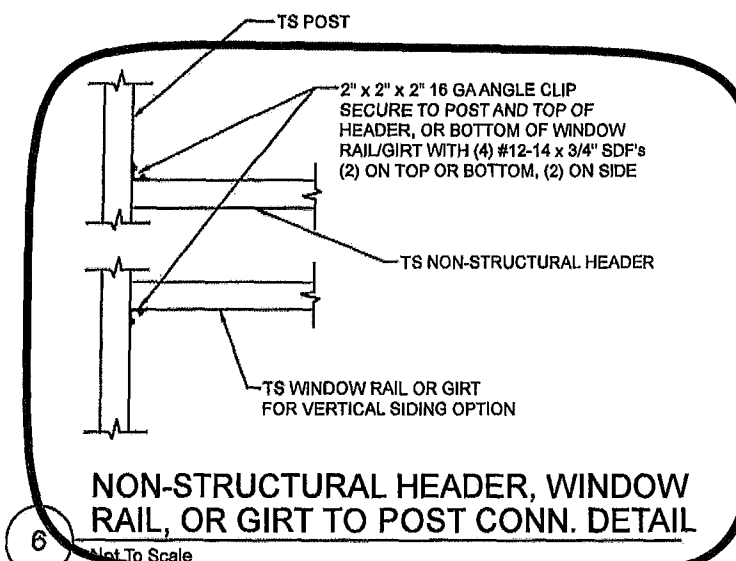
5 END POST/BASE RAIL CONN.

Not To Scale



CAROLINA CARPORTS, INC.
GENERIC PLANS FOR USE IN THE STATE OF FLORIDA
UP TO 30' WIDE AND RISK CATEGORY I ONLY

REVISION	DATE	1/2/2025
DRAWN	CS	SCALE: NTS
CHECKED	CS / ID	PROJ NO. G25001
APPROVED	TB / LP	SHEET 4 OF 6



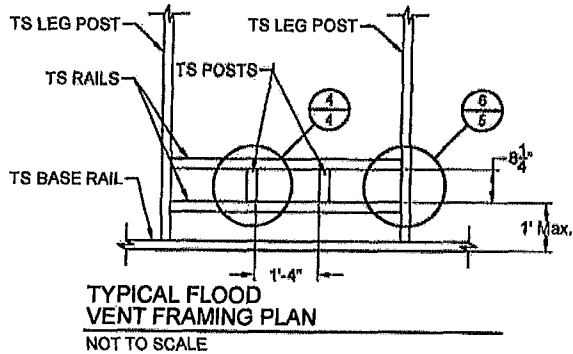
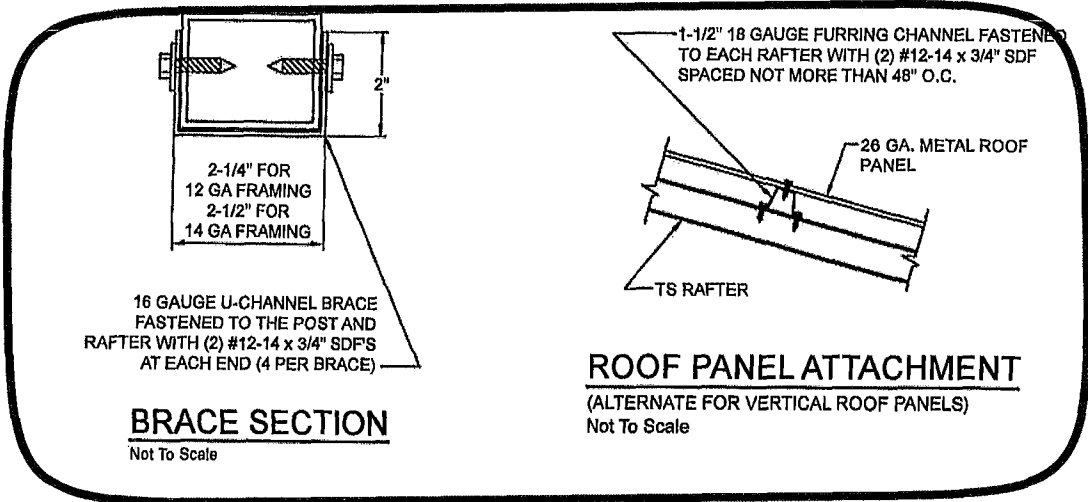
LOVE B PATEL
LICENSE
No. 90753
STATE OF FLORIDA
PROFESSIONAL ENGINEER

BECHTOL ENGINEERING AND TESTING, INC.
605 WEST NEW YORK AVENUE
DELAND, FLORIDA 32720

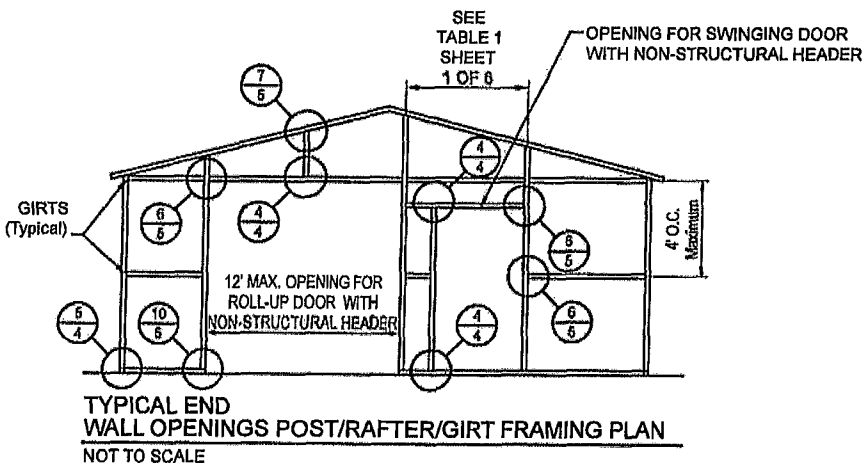
PLEASE NOTE:
PLANS EXPIRE MIDNIGHT 12/31/25

CAROLINA CARPORTS, INC.
GENERIC PLANS FOR USE IN THE STATE OF FLORIDA
UP TO 30' WIDE AND RISK CATEGORY I ONLY

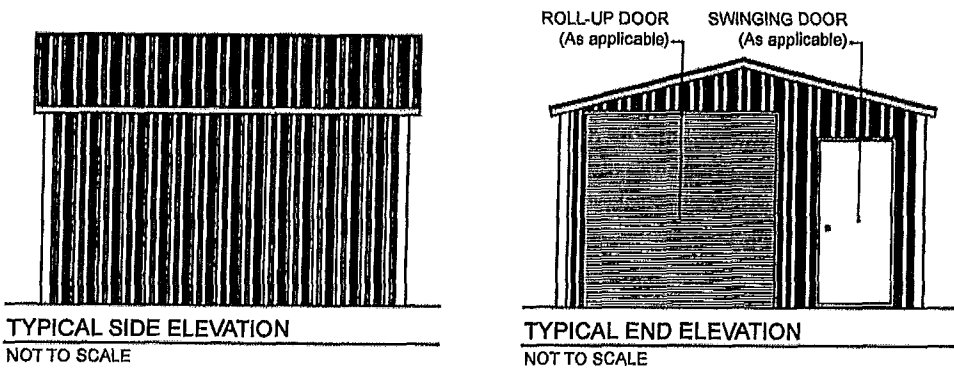
<p>BECHTOL ENGINEERING AND TESTING, INC. <small>CONSULTING GEOTECHNICAL, ENVIRONMENTAL, AND MATERIALS TESTING ENGINEERS Certified by ISO 9001:2015</small></p>		<p>REVISION: _____ DATE: 1/2/2025</p> <p>DRAWN: CS SCALE: NTS</p> <p>CHECKED: CS / ID PROJ NO: G26001</p> <p>APPROVED: TB / LP SHEET 5 OF 6</p>
---	--	---



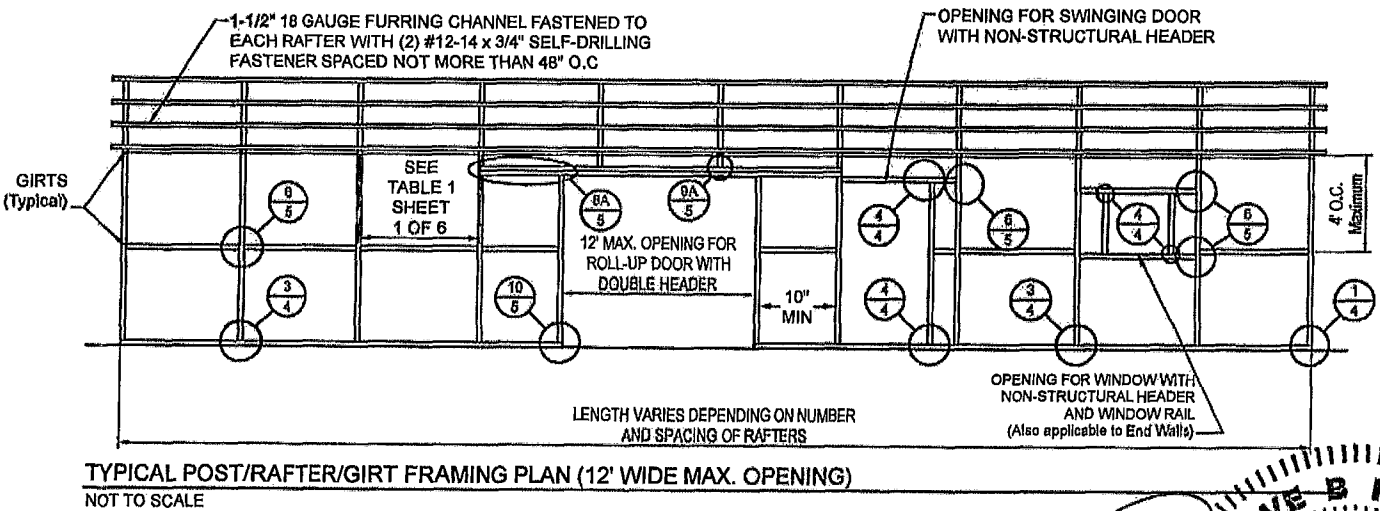
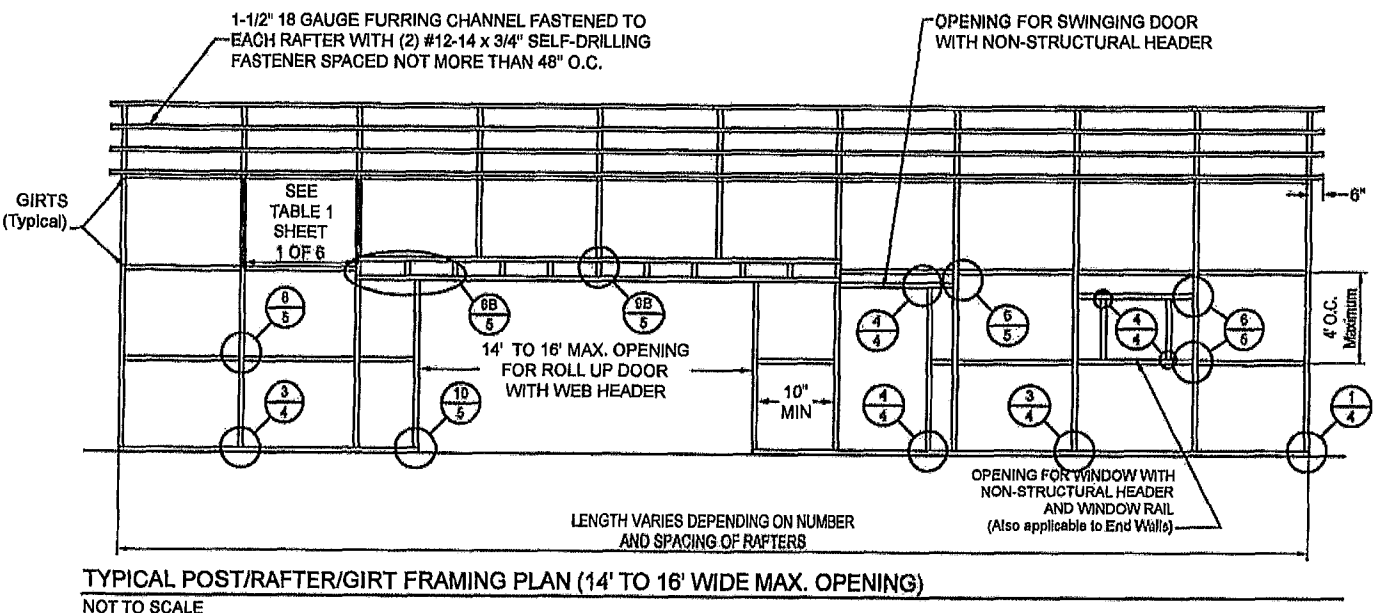
SEE GENERAL NOTE No 14, SHEET 1 OF 6.



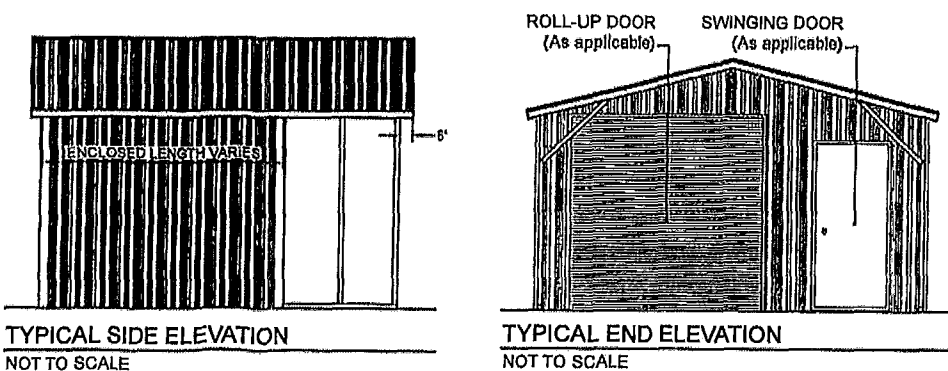
BOX EAVE FRAME RAFTER ENCLOSED BLDG - VERTICAL SIDES



VERTICAL SIDE OPTION



BOX EAVE FRAME RAFTER PARTIALLY OPEN / ENCLOSED BLDG - VERTICAL SIDES



LOVE B. PATEL
LICENSE
No. 90753
STATE OF FLORIDA
PROFESSIONAL ENGINEER

BECHTOL ENGINEERING AND TESTING, INC.
605 WEST NEW YORK AVENUE
DELAND, FLORIDA 32720

PLEASE NOTE:
PLANS EXPIRE MIDNIGHT 12/31/25

CAROLINA CARPORTS, INC.
GENERIC PLANS FOR USE IN THE STATE OF FLORIDA
UP TO 30' WIDE AND RISK CATEGORY I ONLY

BECHTOL ENGINEERING AND TESTING, Inc.
CORPORATING GEOTECHNICAL, ENVIRONMENTAL, AND MATERIALS TESTING ENGINEERS
Certificate # Authorization No. 0000492

REVISED	DATE	1/2/2025
DRAWN	CS	SCALE: NTS
CHECKED	CS / ID	PROJ NO: G25001
APPROVED	TB / LP	SHEET 6 OF 6