



COLUMBIA COUNTY PRODUCT APPROVAL SPECIFICATION SHEET

As required by Florida Statute 553.842 and Florida Administrative Code 9B-72, please provide the information and approval numbers on the building components listed below if they will be utilized on the construction project for which you are applying for a building permit. We recommend you contact your local product supplier should you not know the product approval number for any of the applicable listed products. Statewide approved products are listed online at www.floridabuilding.org.

Category/Subcategory	Manufacturer	Product Description	Approval Number(s)
1. EXTERIOR DOORS			
A. SWINGING			
B. SLIDING			
C. SECTIONAL/ROLL UP			
D. OTHER			
2. WINDOWS			
A. SINGLE/DOUBLE HUNG	Pella	Single Hung Window	16812.1. .4, & .6
B. HORIZONTAL SLIDER			
C. CASEMENT			
D. FIXED	Pella	Fixed Window	16811.2
E. MULLION			
F. SKYLIGHTS			
G. OTHER			
3. PANEL WALL			
A. SIDING			
B. SOFFITS			
C. STOREFRONTS			
D. GLASS BLOCK			
E. OTHER			
4. ROOFING PRODUCTS			
A. ASPHALT SHINGLES			
B. NON-STRUCT METAL			
C. ROOFING TILES			
D. SINGLE PLY ROOF			
E. OTHER			
5. STRUCT COMPONENTS			
A. WOOD CONNECTORS			
B. WOOD ANCHORS			
C. TRUSS PLATES			
D. INSULATION FORMS			
E. LINTELS			
F. OTHERS			
6. NEW EXTERIOR			
A. ENVELOPE PRODUCTS			

The products listed below did not demonstrate product approval at plan review. I understand that at the time of inspection of these products, the following information must be available to the inspector on the jobsite; **(1)** copy of the product approval **(2)** performance characteristics which the product was tested and certified to comply with **(3)** copy of the applicable manufacturer's installation requirements. Further, I understand these products may have to be removed if approval cannot be demonstrated during inspection.

10/19/2023

APPLICANT SIGNATURE

DATE

Plan 3 – Rev 8/15



Product Approval
USER: Public User

[Product Approval Menu](#) > [Product or Application Search](#) > **Application List**

► OFFICE OF THE
SECRETARY

Search Criteria

[Refine Search](#)

Code Version	2020	FL#	16812.1
Application Type	ALL	Product Manufacturer	ALL
Category	ALL	Subcategory	ALL
Application Status	ALL	Compliance Method	ALL
Quality Assurance Entity	ALL	Quality Assurance Entity Contract Expired	ALL
Product Model, Number or Name	ALL	Product Description	ALL
Approved for use in HVHZ	ALL	Approved for use outside HVHZ	ALL
Impact Resistant	ALL	Design Pressure	ALL
Other	ALL		

Search Results - Applications

FL#	Type	Manufacturer	Validated By	Status
FL16812-R5 History	Revision	Pella Corporation FL#: FL16812.1 Model: 250 Series Single Hung Window Description: 36" x 63" vinyl non-impact single window Category: Windows Subcategory: Single Hung	Terrence E. Lunn, PE (561) 625-6455	Approved *

*Approved by DBPR. Approvals by DBPR shall be reviewed and ratified by the POC and/or the Commission if necessary.

[Contact Us](#) :: [2601 Blair Stone Road, Tallahassee FL 32399](#) Phone: 850-487-1824

The State of Florida is an AA/EEO employer. [Copyright 2007-2013 State of Florida](#). :: [Privacy Statement](#) :: [Accessibility Statement](#) :: [Refund Statement](#)

Under Florida law, email addresses are public records. If you do not want your e-mail address released in response to a public-records request, do not send electronic mail to this entity. Instead, contact the office by phone or by traditional mail. If you have any questions, please contact 850.487.1395. *Pursuant to Section 455.275(1), Florida Statutes, effective October 1, 2012, licensees licensed under Chapter 455, F.S. must provide the Department with an email address if they have one. The emails provided may be used for official communication with the licensee. However email addresses are public record. If you do not wish to supply a personal address, please provide the Department with an email address which can be made available to the public. To determine if you are a licensee under Chapter 455, F.S., please click [here](#).

Product Approval Accepts:





Product Approval
USER: Public User

[Product Approval Menu](#) > [Product or Application Search](#) > [Application List](#) > **Application Detail**

► OFFICE OF THE
SECRETARY

FL # FL16812-R5
Application Type Revision
Code Version 2020
Application Status Approved
*Approved by DBPR. Approvals by DBPR shall be reviewed and ratified by the POC and/or the Commission if necessary.

Comments
Archived



Product Manufacturer
Address/Phone/Email

Pella Corporation
102 Main St.
Pella, IA 50219
(641) 621-6096
pellaproductapproval@pella.com

Authorized Signature

TROY FARR
tbfarr@pella.com

Technical Representative
Address/Phone/Email

TROY FARR
18600 NE WILKES ROAD
PORTLAND, OR 97230
(503) 405-9176
tbfarr@pella.com

Quality Assurance Representative
Address/Phone/Email

Pat Bortscheller
102 Main Street
Pella, IA 50219
(641) 621-1000
PJBortscheller@pella.com

Category
Subcategory

Windows
Single Hung

Compliance Method

Certification Mark or Listing

Certification Agency
Validated By

Window and Door Manufacturer Association
Terrence E. Lunn, PE
☒ Validation Checklist - Hardcopy Received

Referenced Standard and Year (of Standard)

<u>Standard</u>	<u>Year</u>
AAMA/WDMA/CSA 101/I.S.2/A440-08	2008
AAMA/WDMA/CSA 101/I.S.2/A440-11	2011

Equivalence of Product Standards
Certified By

Product Approval Method

Method 1 Option A

1. ALL FASTENERS SHALL BE IN ACCORDANCE WITH THESE DRAWINGS. SPECIFIED ANCHOR EMBED TO BASE MATERIAL SHALL BE BEYOND WALL FINISH OR STUCCO.
2. OPENINGS, BUCKING & BUCKING FASTENERS MUST BE PROPERLY DESIGNED & INSTALLED TO TRANSFER WIND LOADS TO THE STRUCTURE.

- INSTALLATION EVALUATION IS BASED ON APPLICABLE ANCHOR STANDARDS AND/OR INFORMATION & RESULTS FROM APPLICABLE TEST REPORTS. THE FLORIDA BUILDING CODE VERSION CONSIDERED WITH THE EVALUATION WAS THAT IN FORCE AT THE TIME OF THE EVALUATION. IN THE EVENT OF CODE VERSION CHANGES/UPDATES OR IN THE EVENT THAT NEW OR ADDITIONAL TESTING IS COMPLETED ON THE REFERENCED PRODUCT, PRIOR TO STATING CODE COMPLIANCE WITH THE STATE, THE MANUFACTURER SHALL CONFIRM WITH THE INSTALLATION EVALUATION ENGINEER OF RECORD THAT THE INSTALLATIONS SPECIFIED HERE-IN ARE CURRENT WITH THE THEN CURRENT TESTING, CODE AND APPLICABLE STANDARDS.

OPENING TYPE (SUBSTRATE)	FRAME/CLIP/NAIL FIN TO OPENING FASTENER TYPE	MINIMUM EMBED	MINIMUM EDGE DIST.
(1) FRAME SCREWS			
MIN. 2X4 WOOD FRAME OR BUCK (MIN. GR. 3 & G=0.55)	NO. 10 SMS OR WOOD SCREW	1 1/4"	3/4"
MIN. 18 GA. 33 KSI METAL STUD	NO. 10 GR. 5 SELF TAP/DRILL SCREW	FULL	1/2"
MIN. 1/8" THK A36 STEEL	NO. 10 GR. 5 SELF TAP/DRILL SCREW	FULL	1/2"
MIN. 1/8" THK 6063-T5 ALUM.	NO. 10 GR. 5 SELF TAP/DRILL SCREW	FULL	1/2"
MIN. C-90 CMU OR 2500 PSI CONCRETE	(2) 1/4" CONCRETE SCREW	1 1/4"	2"
(1) INSTALLATION CLIP SCREWS			
MIN. 2X4 WOOD FRAME OR BUCK (MIN. GR. 3 & G=0.55)	NO. 10 SMS SCREW	1 1/4"	1/2"
MIN. 18 GA. 33 KSI METAL STUD	NO. 10 GR. 5 SELF TAP/DRILL SCREW	FULL	1/2"
MIN. 1/8" THK A36 STEEL	NO. 10 GR. 5 SELF TAP/DRILL SCREW	FULL	1/2"
MIN. 1/8" THK 6063-T5 ALUM.	NO. 10 GR. 5 SELF TAP/DRILL SCREW	FULL	1/2"
2500 PSI CONCRETE	(2) 3/16" CONCRETE SCREW	1 1/4"	2"
(3) NAILING FIN FASTENERS			
MIN. 2X4 WOOD FRAME OR BUCK (MIN. GR. 3 & G=0.55)	NO. 8 SMS SCREW	1 3/8"	1/2"
MIN. 2X4 WOOD FRAME OR BUCK (MIN. GR. 3 & G=0.55)	11 GA. ROOFING NAIL	1 3/8"	1/2"
MIN. 1/8" THK A36 STEEL	NO. 8 GR. 5 SELF TAP/DRILL SCREW	FULL	1/2"
MIN. 1/8" THK 6063-T5 ALUM.	NO. 8 GR. 5 SELF TAP/DRILL SCREW	FULL	1/2"
(1) FRAME AND INSTALLATION CLIP SCREWS SHALL BE A PAN OR HEX HEAD SCREW.			
(2) CONCRETE SCREWS SHALL BE ELCO ULTRACONS (C.S.), ELCO CRETE-FLEX (S.S.), ITW RAMSET/RED HEAD TAPCONS (C.S. OR S.S.) OR HILTI KWIK-CON II (C.S. OR S.S.).			
(3) WHEN SCREWS ARE USED WITH THE NAIL FIN, THEY MUST BE A PAN HEAD OR WAFFLE HEAD SCREW OR HAVE A FLAT WASHER AT THE SCREW HEAD.			

- (1) FRAME AND INSTALLATION CLIP SCREWS SHALL BE A PAN OR HEX HEAD SCREW.
- (2) CONCRETE SCREWS SHALL BE ELCO ULTRACONS (C.S.), ELCO CRETE-FLEX (S.S.), ITW RAMSET/RED HEAD TAPCONS (C.S. OR S.S.) OR HILTI KWIK-CON II (C.S. OR S.S.).
- (3) WHEN SCREWS ARE USED WITH THE NAIL FIN, THEY MUST BE A PAN HEAD OR WAFFLE HEAD SCREW OR HAVE A FLAT WASHER AT THE SCREW HEAD.



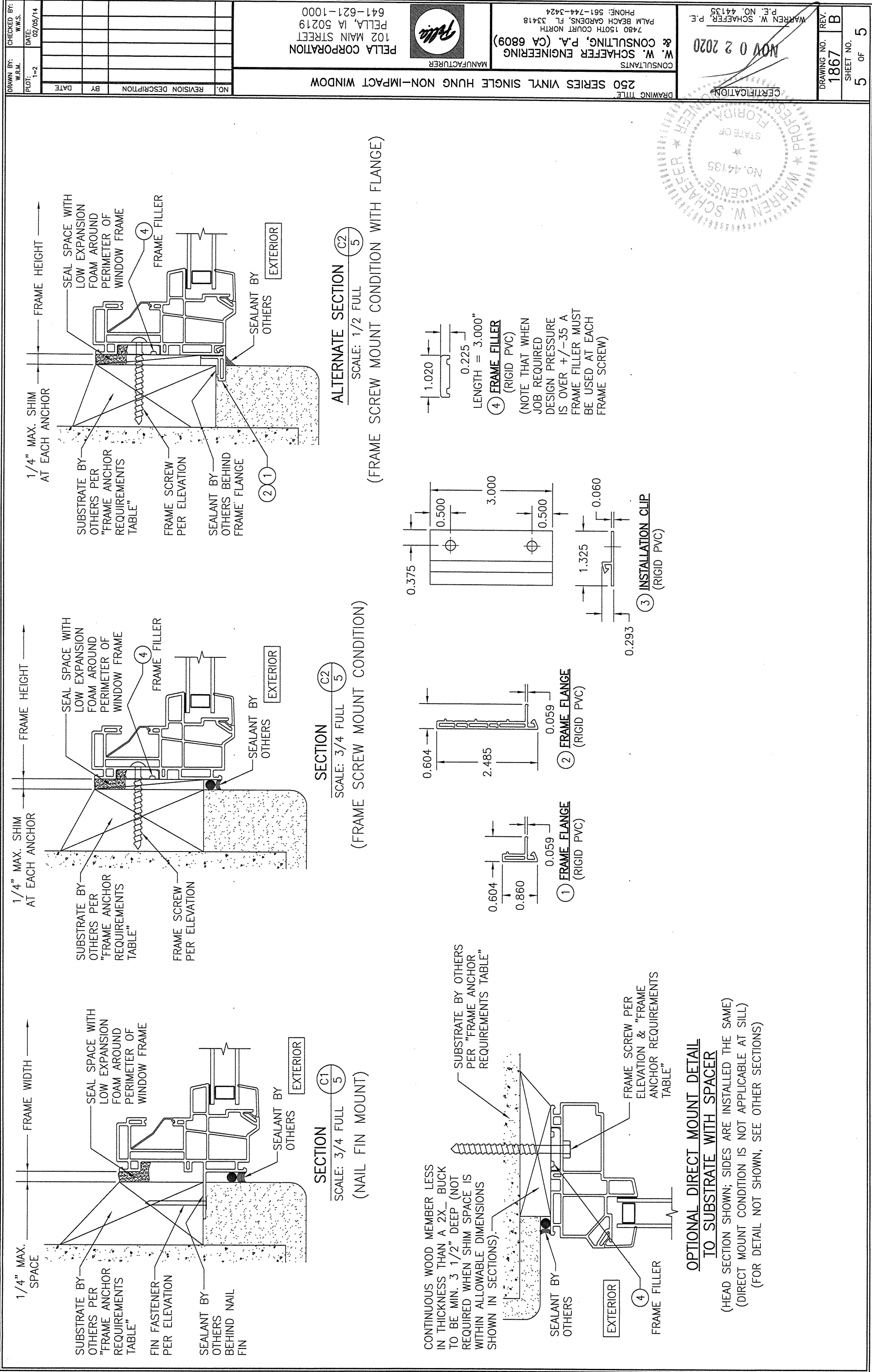
EXTERIOR ELEVATION:
SINGLE WINDOW
SCALE: 3/4" = 1'-0"
(FRAME SCREW MOUNT CON

SIDE JAMB ANCHOR SPACING TABLE	
MAXIMUM FRAME WIDTH (IN.)	MAXIMUM O.C. SPACING (IN.)
54	12
48	13
36	17

NOTE: FOR MAX. SINGLE WINDOW FRAME DIMENSIONS AND ALLOWABLE DESIGN PRESSURE, SEE APPLICABLE FLORIDA APPROVAL

ALTERNATE ANCHOR/SUBSTRATE EVALUATION NOTE:
ALL ALTERNATE ANCHORS IN THEIR SPECIFIED SUBSTRATES HAVE BEEN ANALYZED IN ACCORDANCE WITH THEIR APPLICABLE STANDARD(S) AND ARE FOUND TO BE EQUIVALENT TO OR STRONGER THAN THE ANCHOR(S) USED IN TESTING WITH THIS PRODUCT.

THESE DRAWINGS ARE APPLICABLE ONLY TO THE PRODUCT SPECIFIED. THEY MAY NOT BE USED FOR THE ASSEMBLY AND/OR INSTALLATION OF ANY OTHER PRODUCT NOR MAY THEY BE USED FOR RATIONAL AND/OR LOCAL APPROVAL OF ANY PRODUCT NOT PRODUCED BY THE MANUFACTURER. STATED ON THESE DRAWINGS.




[DBPR HOME](#) | [ABOUT DBPR](#) | [DBPR DIVISIONS](#) | [CONTACT DBPR](#)
[BCIS Home](#) | [Log In](#) | [User Registration](#) | [Hot Topics](#) | [Submit Surcharge](#) | [Stats & Facts](#) | [Publications](#) | [Contact Us](#) | [BCIS Site Map](#) | [Links](#) | [Search](#)

Product Approval
 USER: Public User

[Product Approval Menu](#) > [Product or Application Search](#) > **Application List**

 OFFICE OF THE
 SECRETARY

Search Criteria
[Refine Search](#)

Code Version	2020	FL#	16812.4
Application Type	ALL	Product Manufacturer	ALL
Category	ALL	Subcategory	ALL
Application Status	ALL	Compliance Method	ALL
Quality Assurance Entity	ALL	Quality Assurance Entity Contract Expired	ALL
Product Model, Number or Name	ALL	Product Description	ALL
Approved for use in HVHZ	ALL	Approved for use outside HVHZ	ALL
Impact Resistant	ALL	Design Pressure	ALL
Other	ALL		

Search Results - Applications

FL#	Type	Manufacturer	Validated By	Status
FL16812-R7 History	Revision	Pella Corporation FL#: FL16812.4 Model: 250 Series Single Hung Window Description: 48" x 72" vinyl non-impact single window with fully reinforced stiles & rails & HP package Category: Windows Subcategory: Single Hung	T.E. Lunn, PE, LLC (561) 625-6455	Approved *

*Approved by DBPR. Approvals by DBPR shall be reviewed and ratified by the POC and/or the Commission if necessary.

[Contact Us](#) :: 2601 Blair Stone Road, Tallahassee FL 32399 Phone: 850-487-1824

 The State of Florida is an AA/EEO employer. [Copyright 2007-2013 State of Florida](#). :: [Privacy Statement](#) :: [Accessibility Statement](#) :: [Refund Statement](#)

Under Florida law, email addresses are public records. If you do not want your e-mail address released in response to a public-records request, do not send electronic mail to this entity. Instead, contact the office by phone or by traditional mail. If you have any questions, please contact 850.487.1395. *Pursuant to Section 455.275(1), Florida Statutes, effective October 1, 2012, licensees licensed under Chapter 455, F.S. must provide the Department with an email address if they have one. The emails provided may be used for official communication with the licensee. However email addresses are public record. If you do not wish to supply a personal address, please provide the Department with an email address which can be made available to the public. To determine if you are a licensee under Chapter 455, F.S., please click [here](#).

Product Approval Accepts:


GENERAL NOTES:

1. ALL FASTENERS SHALL BE IN ACCORDANCE WITH THESE DRAWINGS. SPECIFIED ANCHOR EMBED TO BASE MATERIAL. SHALL BE BEYOND WALL FINISH OR STUCCO.
2. OPENINGS, BUCKING & BUCKING FASTENERS MUST BE PROPERLY DESIGNED & INSTALLED TO TRANSFER WIND LOADS TO THE STRUCTURE.
3. THESE NON-IMPACT RATED PRODUCT INSTALLATIONS ARE IN ACCORDANCE WITH AND MEET THE REQUIREMENTS OF THE FLORIDA BUILDING CODE (FBC).
4. ALL ANCHORS SECURING PRODUCT FRAMES TO PRESSURE TREATED BUCKS OR WOOD FRAMING SHALL BE CAPABLE OF RESISTING CORROSION CAUSED BY THE PRESSURE TREATING CHEMICALS IN THE WOOD.
5. MATERIALS, INCLUDING BUT NOT LIMITED TO STEEL SCREWS, THAT COME INTO CONTACT WITH OTHER DISSIMILAR MATERIALS SHALL MEET THE REQUIREMENTS OF FLORIDA BUILDING CODE CHAPTER 20.
6. TO THE BEST OF OUR KNOWLEDGE, THE PRODUCT SHOWN HEREIN IS CERTIFIED & QUALITY ASSURED BY A FLORIDA STATE APPROVED CERTIFICATION/OA ENTITY & SHALL BE LABELED IN ACCORDANCE WITH THE FBC AND THE FLORIDA DEPARTMENT OF BUSINESS & PROFESSIONAL REGULATION SPECIFICATIONS. PRODUCT ASSEMBLY IS NOT PART OF THIS DRAWING AND SHALL BE IN ACCORDANCE WITH THE MANUFACTURER'S QUALITY ASSURANCE SPECIFICATIONS & TESTING REPORTS.
7. CERTIFICATION OF THESE PRODUCT INSTALLATIONS SHALL BE CONSIDERED VOID IF ANY OF THE FOLLOWING APPLY: 1) PRODUCT IS INSTALLED WITHOUT A BUILDING PERMIT FROM THE APPLICABLE LOCAL BUILDING DEPARTMENT. 2) PRODUCT IS INSTALLED BY ANYONE OTHER THAN A LICENSED CONTRACTOR EXPERIENCED WITH INSTALLATIONS OF THIS TYPE OF PRODUCT. 3) IF CHANGES HAVE OCCURRED TO THE PRODUCT'S CERTIFICATION ENTITY'S CERTIFICATE THAT CAUSE THESE INSTALLATIONS TO BE INCORRECT OR INCONSISTENT WITH WHAT HAS BEEN TESTED.
8. THE LEAST DESIGN PRESSURE SPECIFIED EITHER IN THIS DRAWING OR IN THE PRODUCTS CERTIFICATION SHALL CONTROL FOR THE INSTALLED PRODUCT.
9. THESE DRAWINGS CERTIFY THE PRODUCT INSTALLATION ONLY. WATER PROOFING OF THE INSTALLED PRODUCT IS NOT PART OF THIS INSTALLATION CERTIFICATION. THAT RESPONSIBILITY SHALL BE THAT OF THE MANUFACTURER &/OR INSTALLER.

INSTALLATION EVALUATION IS BASED ON APPLICABLE ANCHOR STANDARDS AND/OR INFORMATION & RESULTS FROM APPLICABLE TEST REPORTS. THE FLORIDA BUILDING CODE VERSION CONSIDERED WITH THE EVALUATION WAS THAT IN FORCE AT THE TIME OF THE EVALUATION. IN THE EVENT OF CODE VERSION CHANGES/UPDATES OR IN THE EVENT THAT NEW OR ADDITIONAL TESTING IS COMPLETED ON THE REFERENCED PRODUCT, PRIOR TO STATING CODE COMPLIANCE WITH THE STATE, THE MANUFACTURER SHALL CONFIRM WITH THE INSTALLATION EVALUATION ENGINEER OF RECORD THAT THE INSTALLATIONS SPECIFIED HERE-IN ARE CURRENT WITH THE THEN CURRENT TESTING, CODE AND APPLICABLE STANDARDS.

PRESSURES & CONDITIONS SHOWN IN THIS DRAWING ARE COVERED BY INSTALLATION REQUIREMENTS ONLY. THE GOVERNING CONDITIONS ON ANY SPECIFIC PRODUCT SHALL BE THE LESSER OF THOSE SPECIFIED IN THE PRODUCTS STATE APPROVAL OR THAT SHOWN IN THESE DRAWINGS.

INSTALLATION NOTE:
WHEN NECESSARY, INSTALLATION METHODS MAY BE MIXED WITH ANY ONE WINDOW SUCH THAT INDIVIDUAL SIDES OF THE WINDOW MAY USE ONE OR THE OTHER ANCHOR METHOD (EXAMPLE: HEAD MAY USE FRAME SCREWS METHOD WHILE OTHER SIDES USE FIN)

FRAME ANCHOR REQUIREMENTS TABLE

OPENING TYPE (SUBSTRATE)	FRAME/CLIP/NAIL FIN TO OPENING FASTENER TYPE	MINIMUM EMBED	MINIMUM EDGE DIST.
(1) FRAME SCREWS			
MIN. 2X4 WOOD FRAME OR BUCK (MIN. GR. 3 & G=0.55)	NO. 10 SMS OR WOOD SCREW	1 1/4"	3/4"
MIN. 18 GA. J33 KSI METAL STUD	NO. 10 GR. 5 SELF TAP/DRILL SCREW	FULL	1/2"
MIN. 1/8" THK A36 STEEL	NO. 10 GR. 5 SELF TAP/DRILL SCREW	FULL	1/2"
MIN. 1/8" THK 6063-T5 ALUM.	NO. 10 GR. 5 SELF TAP/DRILL SCREW	FULL	1/2"
MIN. C-90 CMU OR 2500 PSI CONCRETE	(2) 1/4" CONCRETE SCREW	1 1/4"	2"

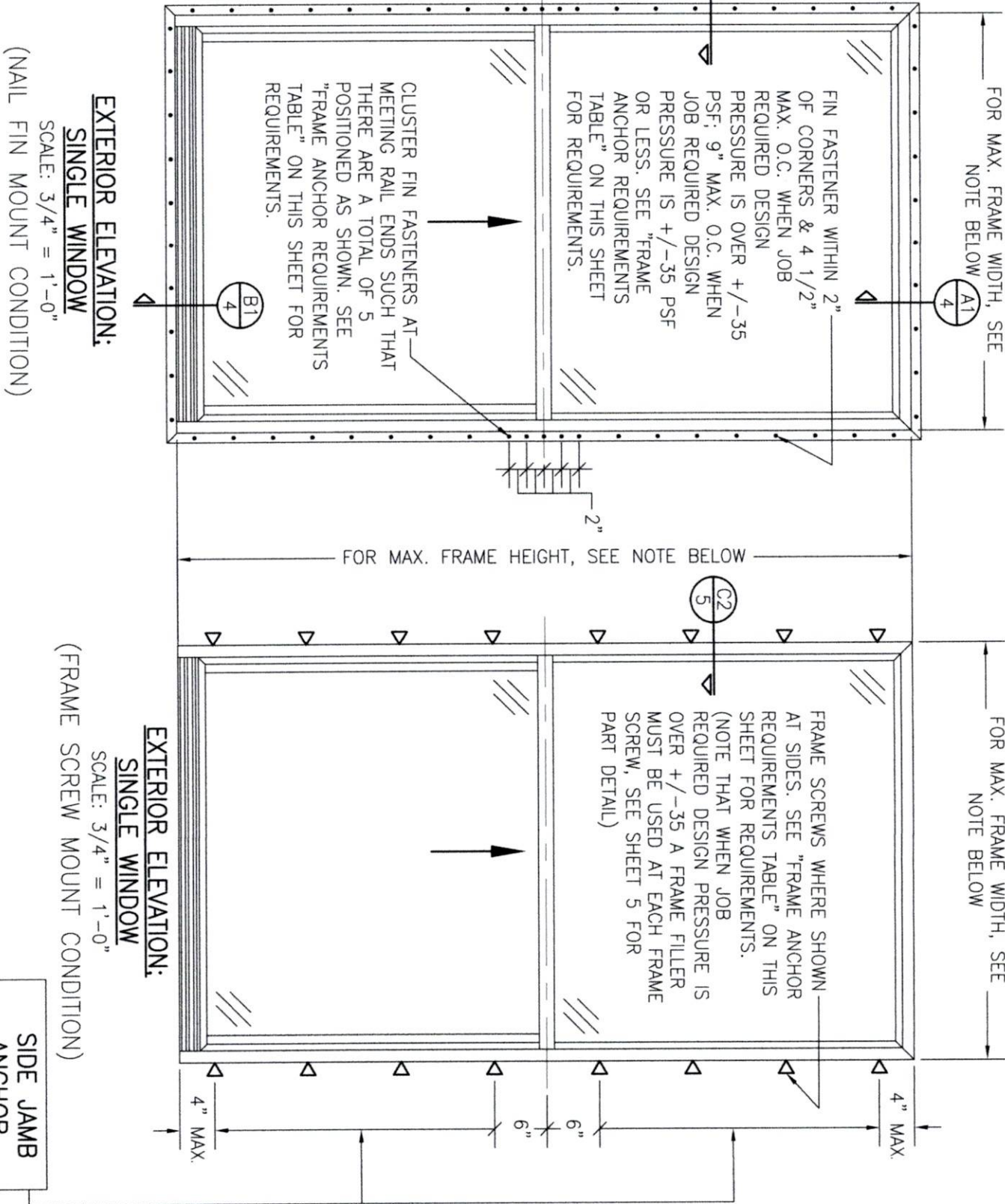
(1) INSTALLATION CLIP SCREWS

MIN. 2X4 WOOD FRAME OR BUCK (MIN. GR. 3 & G=0.55)	NO. 10 SMS SCREW	1 1/4"	1/2"
MIN. 18 GA. J33 KSI METAL STUD	NO. 10 GR. 5 SELF TAP/DRILL SCREW	FULL	1/2"
MIN. 1/8" THK A36 STEEL	NO. 10 GR. 5 SELF TAP/DRILL SCREW	FULL	1/2"
MIN. 1/8" THK 6063-T5 ALUM.	NO. 10 GR. 5 SELF TAP/DRILL SCREW	FULL	1/2"
2500 PSI CONCRETE	(2) 3/16" CONCRETE SCREW	1 1/4"	2"

(3) NAILING FIN FASTENERS

MIN. 2X4 WOOD FRAME OR BUCK (MIN. GR. 3 & G=0.55)	NO. 8 SMS SCREW	1 3/8"	1/2"
MIN. 2X4 WOOD FRAME OR BUCK (MIN. GR. 3 & G=0.55)	11 GA. ROOFING NAIL	1 3/8"	1/2"
MIN. 1/8" THK A36 STEEL	NO. 8 GR. 5 SELF TAP/DRILL SCREW	FULL	1/2"
MIN. 1/8" THK 6063-T5 ALUM.	NO. 8 GR. 5 SELF TAP/DRILL SCREW	FULL	1/2"

- (1) FRAME AND INSTALLATION CLIP SCREWS SHALL BE A PAN OR HEX HEAD SCREW.
- (2) CONCRETE SCREWS SHALL BE ELCO ULTRACONS (C.S.), ELCO CRETE-FLEX (S.S.), ITW RAMSET/RED HEAD TAPCONS (C.S. OR S.S.) OR HILTI KWIK-CON II (C.S. OR S.S.).
- (3) WHEN SCREWS ARE USED WITH THE NAIL FIN, THEY MUST BE A PAN HEAD OR WAFLE HEAD SCREW OR HAVE A FLAT WASHER AT THE SCREW HEAD.



NOTE: FOR MAX. SINGLE WINDOW FRAME DIMENSIONS AND ALLOWABLE DESIGN PRESSURE, SEE APPLICABLE FLORIDA APPROVAL

ANCHOR/SUBSTRATE EVALUATION NOTE:

ALL ANCHORS IN THEIR SPECIFIED SUBSTRATES HAVE BEEN ANALYZED IN ACCORDANCE WITH THEIR APPLICABLE STANDARD(S) AND ARE FOUND TO BE CAPABLE OF SUPPORTING ALL LOADS IMPOSED ON THEM UNDER THE GUIDELINES OF THIS DOCUMENT. ANY SUBSTRATES OR CONDITIONS OUTSIDE OF WHAT IS SHOWN HERE-IN SHALL BE SUBJECT TO JOB SPECIFIC ENGINEER'S REVIEW & CERTIFICATION.

SIDE JAMB ANCHOR SPACING TABLE	
MAXIMUM FRAME WIDTH (IN.)	MAXIMUM O.C. SPACING (IN.)
54	12
48	13
36	17

DRAWN BY: W.R.M.		CHECKED BY: W.M.S.	
PLT:	DATE:	PLT:	DATE:
1=16	02/05/14		
NO.	REVISION	DESCRIPTION	BY
A1	UPDATE FOR NEW TESTING		W.W.S.
B1	ADDED 109 X 72 WINDOW		W.W.S.
C1	UPDATE TO CURRENT STANDARDS		W.W.S.

PELLA CORPORATION
102 MAIN STREET
PELLA, IA 50219
641-621-1000



DRAWING TITLE
250 SERIES VINYL SINGLE HUNG NON-IMPACT WINDOW

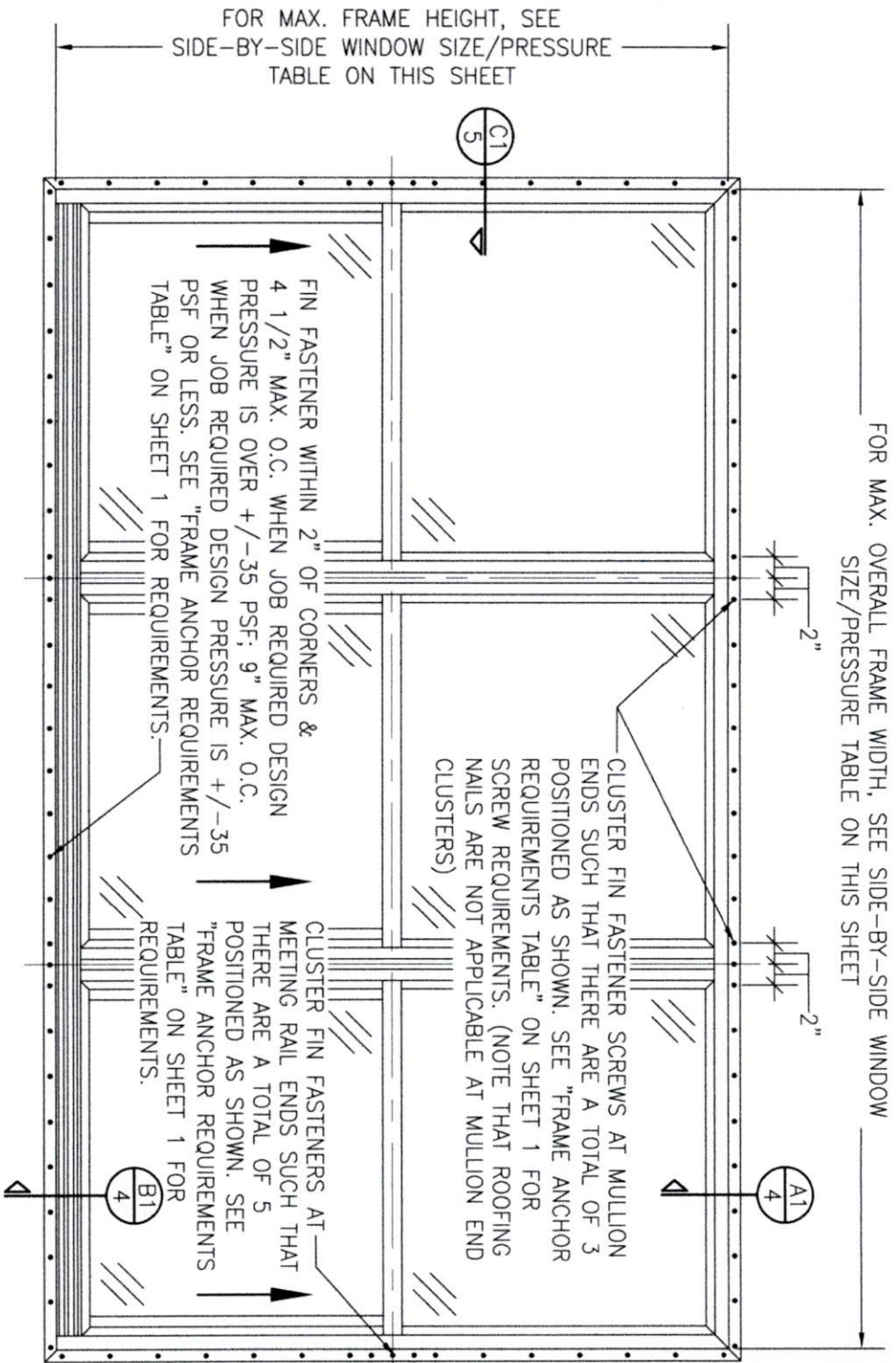
CONSULTANTS
W. W. SCHAEFER ENGINEERING & CONSULTING, P.A.
26376 NADIR ROAD; UNIT 309
PUNTA GORDA, FL 33983
PHONE: 561-744-3424

MANUFACTURER

CERTIFICATION

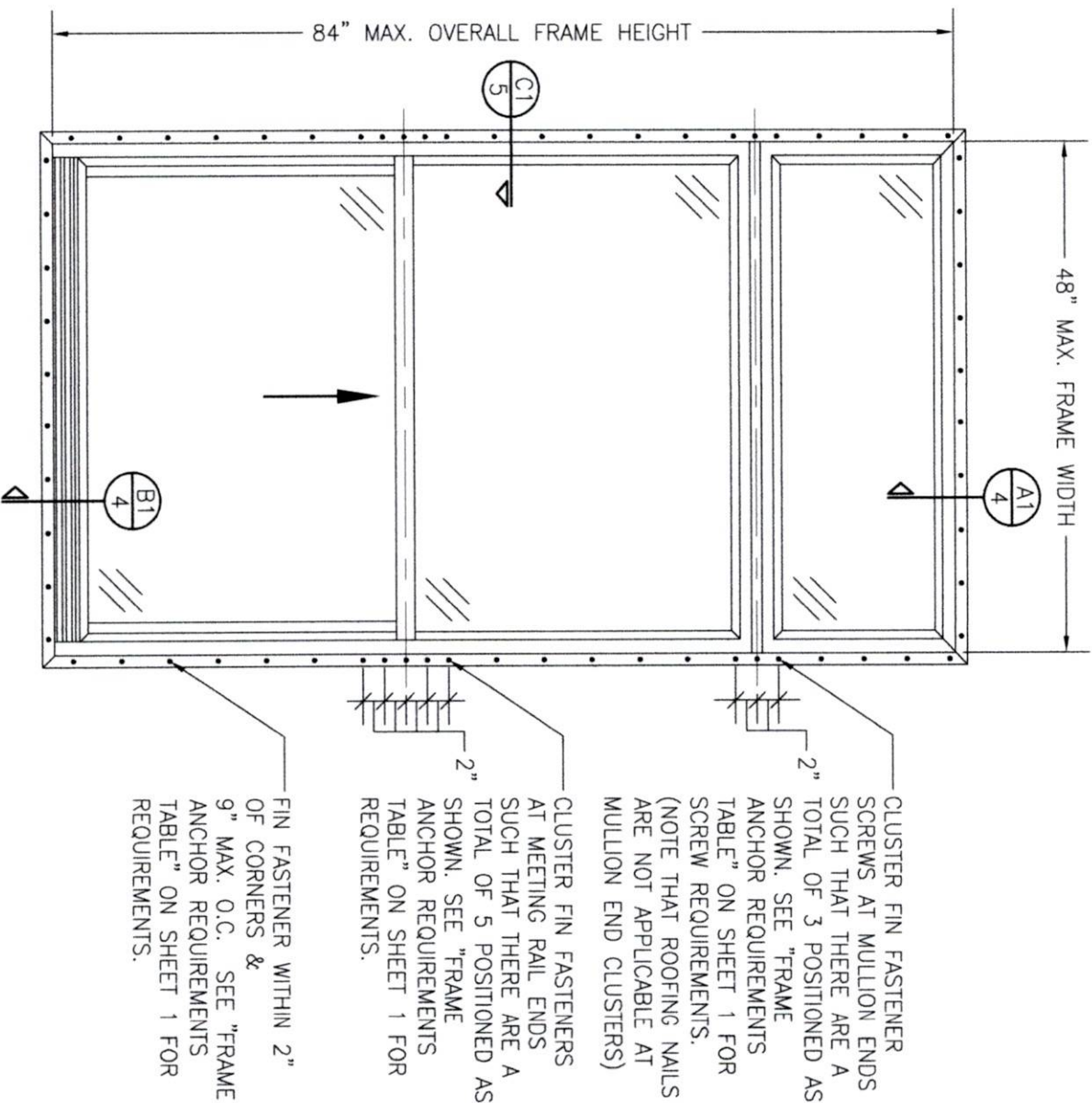
WARREN W. SCHAEFER, P.E.
P.E. NO. 44135

DRAWING NO.	REV.
1867	C
SHEET NO.	OF
1	5



**EXTERIOR ELEVATION:
SIDE-BY-SIDE WINDOW**
SCALE: 3/4" = 1'-0"
(NAIL FIN MOUNT CONDITION)

ALLOWABLE SIDE-BY-SIDE WINDOW SIZE/PRESSURE TABLE		
MAXIMUM OVERALL FRAME WIDTH DIMENSION (IN.)	MAXIMUM FRAME HEIGHT DIMENSION (IN.)	ALLOWABLE PRESSURE (+/- PSF)
TRIPLE WINDOW		
109	63	35
109	72	30
DOUBLE WINDOW		
96	72	35
72	65 1/2	50




**EXTERIOR ELEVATION:
SINGLE WINDOW WITH TRANSOM**
SCALE: 3/4" = 1'-0"
(NAIL FIN MOUNT CONDITION)

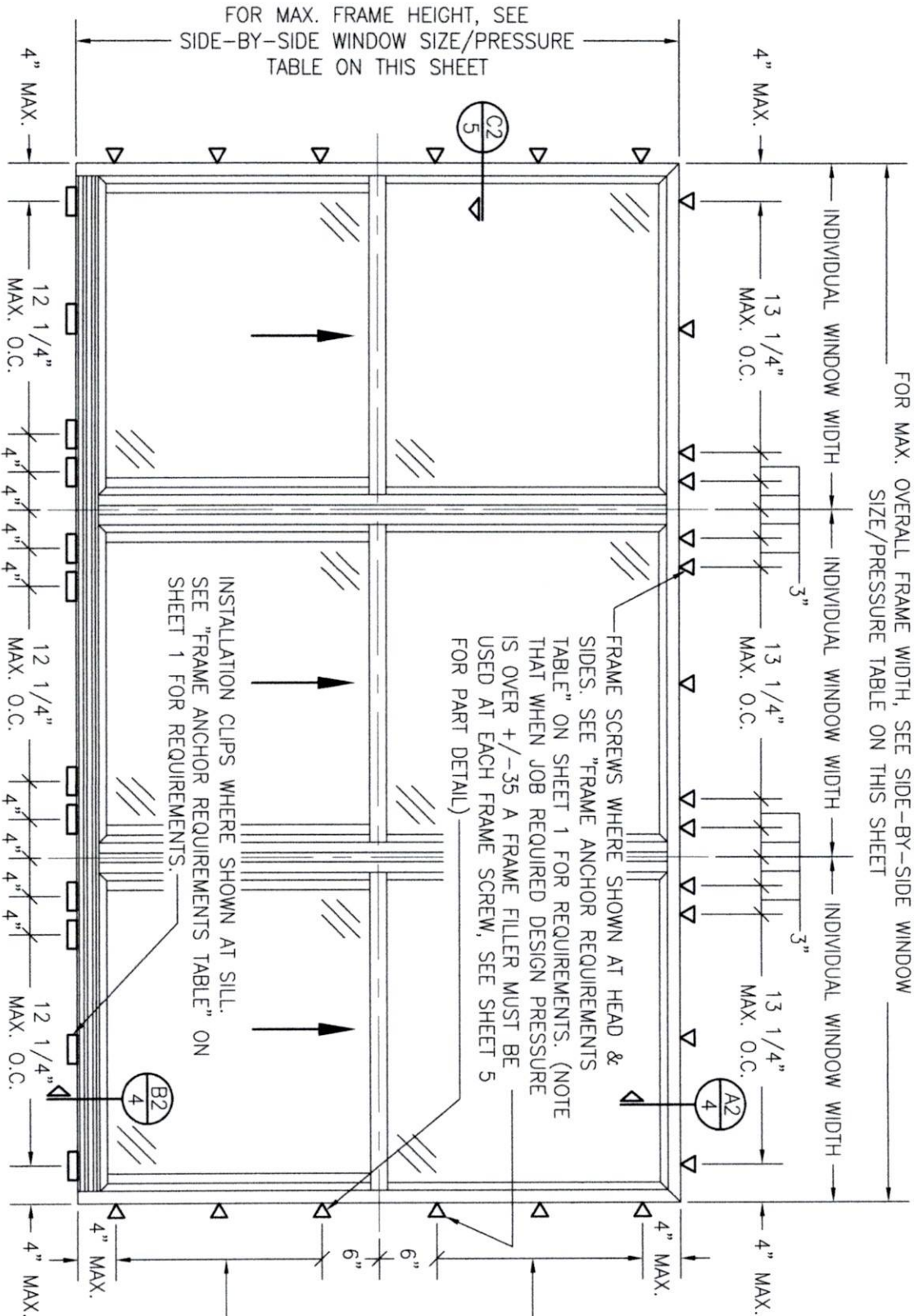
ALLOWABLE DESIGN PRESSURE (TRANSOM UNITS ONLY)
+/-35 PSF

PRESSURES & CONDITIONS SHOWN IN THIS DRAWING ARE GOVERNED BY INSTALLATION REQUIREMENTS ONLY. THE GOVERNING CONDITIONS ON ANY SPECIFIC PRODUCT SHALL BE THE LESSER OF THOSE SPECIFIED IN THE PRODUCTS STATE APPROVAL OR THAT SHOWN IN THESE DRAWINGS.

NO.	REVISION	DESCRIPTION	BY	DATE

DRAWN BY: W.R.M. PLOT: 1=16	CHECKED BY: W.W.S. DATE: 02/05/14
CONSULTANTS W. W. SCHAEFER ENGINEERING & CONSULTING, P.A. 26376 NADIR ROAD; UNIT 309 PUNTA GORDA, FL 33983 PHONE: 561-744-3424	
MANUFACTURER  PELLA CORPORATION 102 MAIN STREET PELLA, IA 50219 641-621-1000	

DRAWING TITLE 250 SERIES VINYL SINGLE HUNG NON-IMPACT WINDOW	
CERTIFICATION WARREN W. SCHAEFER, P.E. P.E. NO. 44135	DRAWING NO. 1867 SHEET NO. 2 OF 5



EXTERIOR ELEVATION:
SIDE-BY-SIDE WINDOW

SCALE: 3/4" = 1'-0"

(FRAME SCREW AND CLIP MOUNT CONDITION)

ALLOWABLE SIDE-BY-SIDE
WINDOW SIZE/PRESSURE
TABLE

MAXIMUM OVERALL FRAME WIDTH DIMENSION (IN.)	MAXIMUM FRAME HEIGHT DIMENSION (IN.)	ALLOWABLE PRESSURE (+/- PSF)
TRIPLE WINDOW		
109	63	35
109	72	30
DOUBLE WINDOW		
96	72	35
72	65 1/2	50

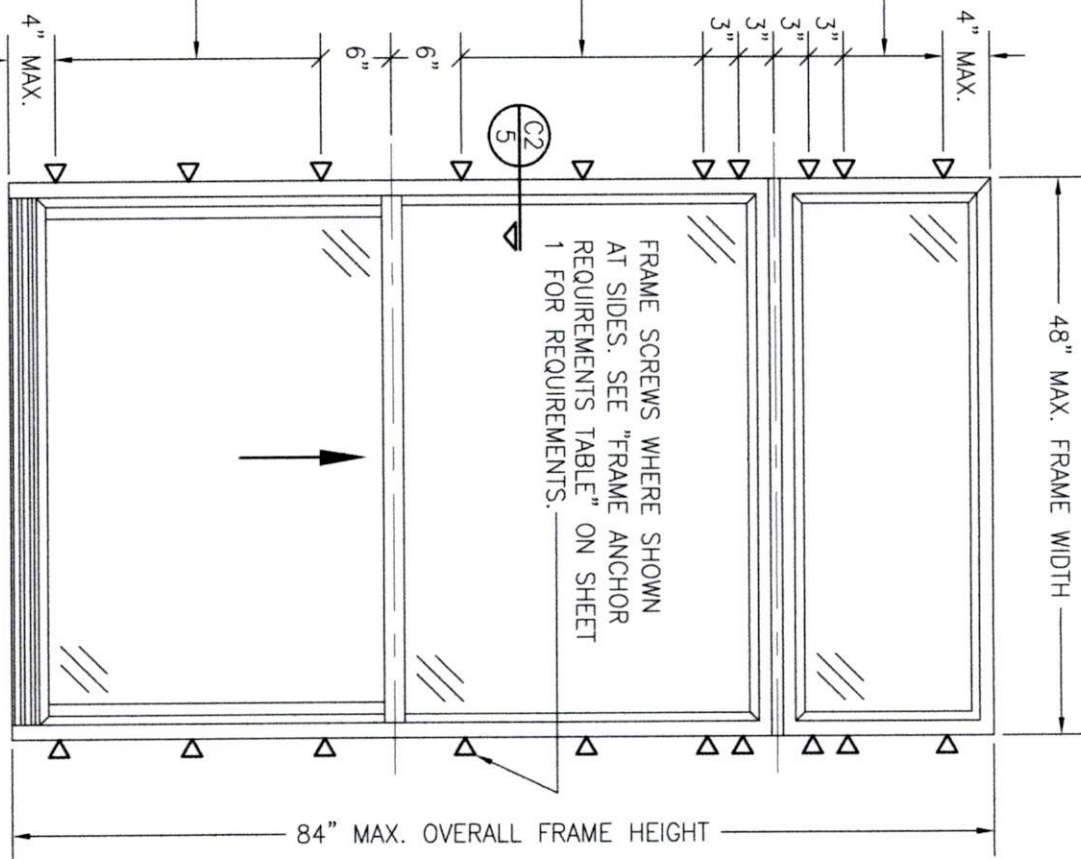
SIDE JAMB ANCHOR SPACING TABLE		
MAXIMUM INDIVIDUAL WINDOW WIDTH (IN.)	MAXIMUM O.C. SPACING (IN.)	
48	13	
36	17	

EXTERIOR ELEVATION:
SINGLE WINDOW WITH TRANSOM

SCALE: 3/4" = 1'-0"


(FRAME SCREW MOUNT CONDITION)

ALLOWABLE DESIGN PRESSURE (TRANSOM UNITS ONLY)
+/-35 PSF

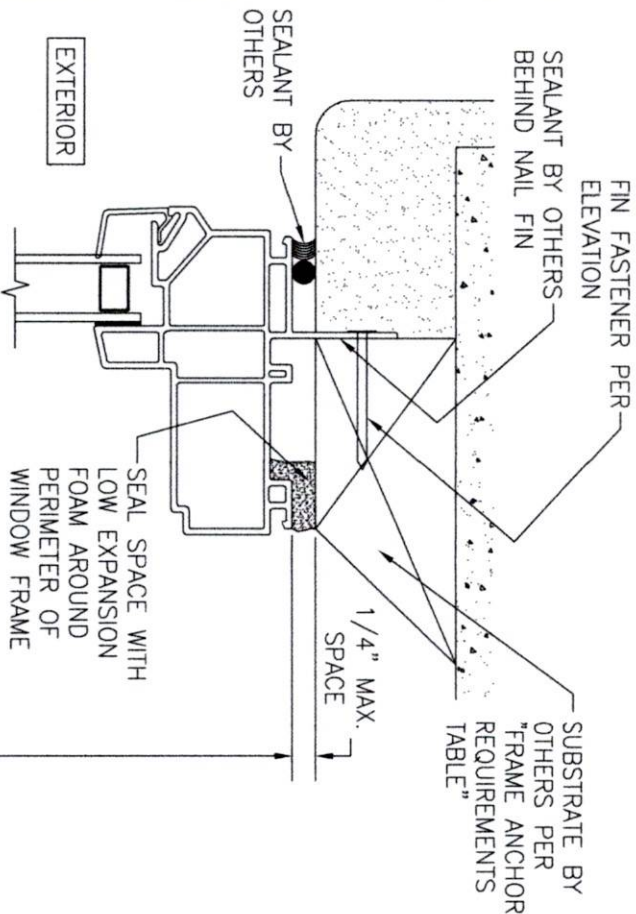


PRESSURES & CONDITIONS SHOWN IN THIS
DRAWING ARE GOVERNED BY INSTALLATION
REQUIREMENTS ONLY. THE GOVERNING
CONDITIONS ON ANY SPECIFIC PRODUCT
SHALL BE THE LESSER OF THOSE SPECIFIED
IN THE PRODUCTS STATE APPROVAL OR THAT
SHOWN IN THESE DRAWINGS.

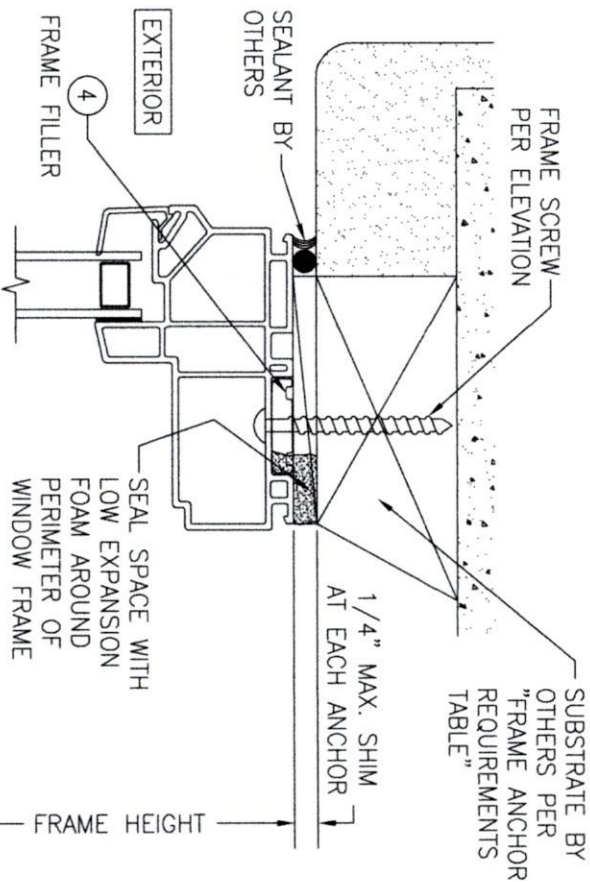
NO.	REVISION	DESCRIPTION	BY	DATE	PLOT: 1=16	DRAWN BY: W.R.M.	CHECKED BY: W.M.S.
						DATE: 02/05/14	

DRAWING TITLE	
250 SERIES VINYL SINGLE HUNG NON-IMPACT WINDOW	
CONSULTANTS	MANUFACTURER
W. W. SCHAEFER ENGINEERING & CONSULTING, P.A. 26376 NADIR ROAD; UNIT 309 PUNTA GORDA, FL 33983 PHONE: 561-744-3424	 PELLA CORPORATION 102 MAIN STREET PELLA, IA 50219 641-621-1000

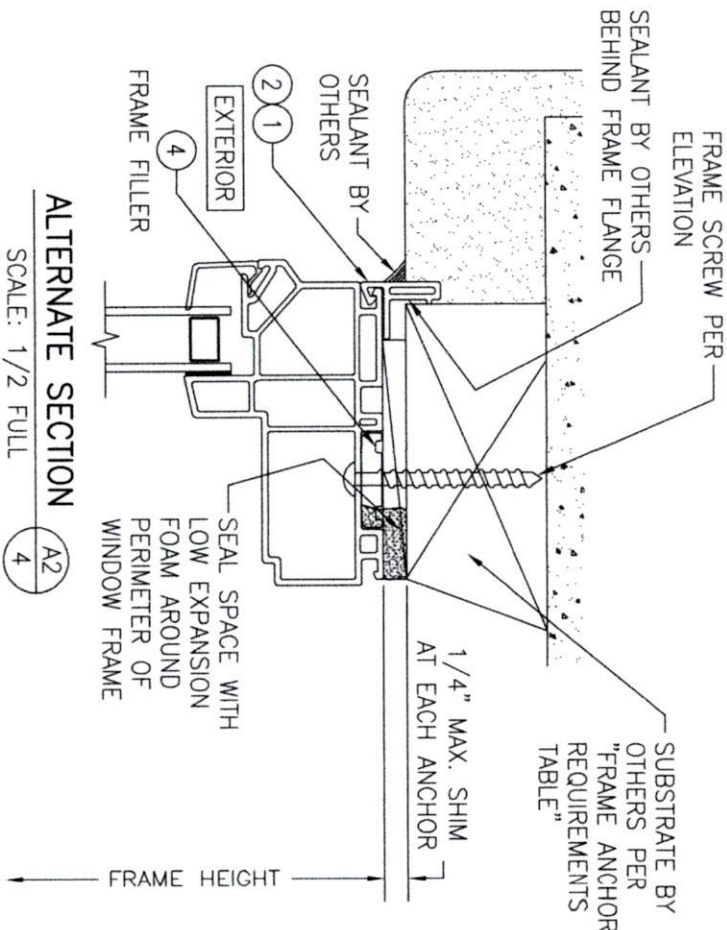
CERTIFICATION	
WARREN W. SCHAEFER, P.E. P.E. NO. 44135	
DRAWING NO.	REV.
1867	C
SHEET NO.	OF
3	5



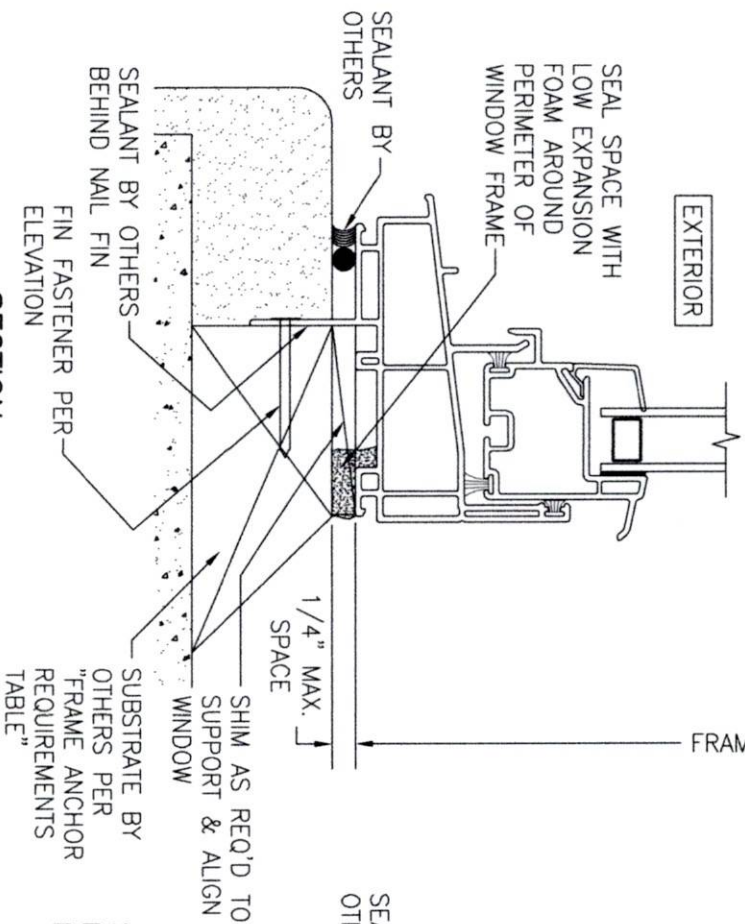
SECTION
SCALE: 3/4 FULL
(NAIL FIN MOUNT)



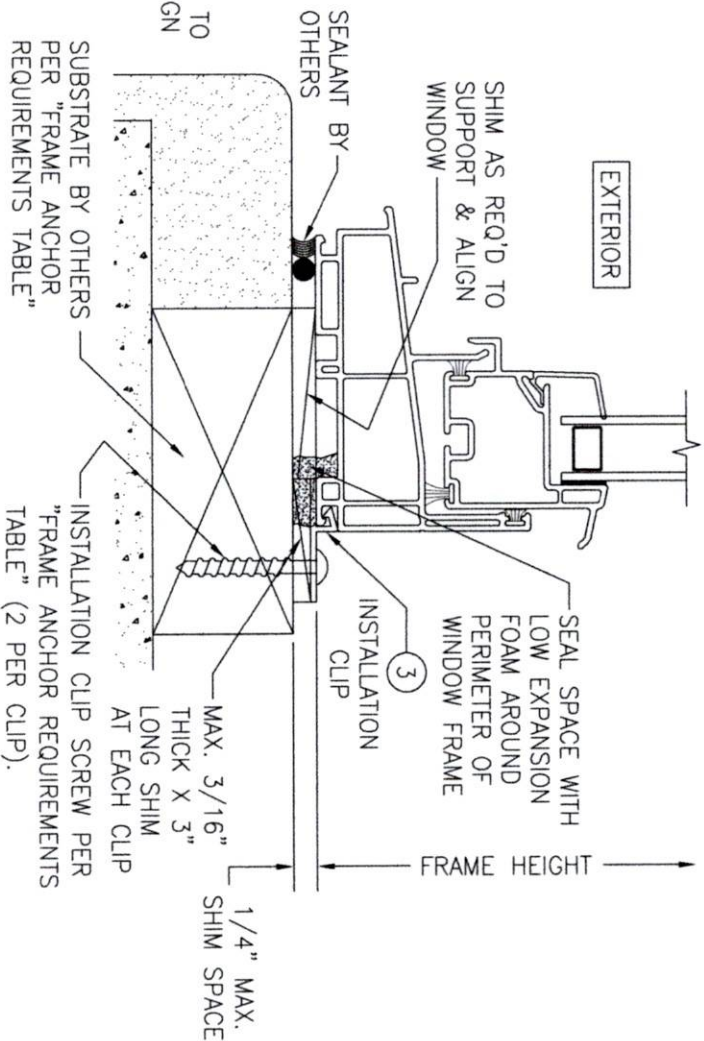
SECTION
SCALE: 3/4 FULL
(FRAME SCREW MOUNT CONDITION)



ALTERNATE SECTION
SCALE: 1/2 FULL
(FRAME SCREW MOUNT CONDITION WITH FLANGE)



SECTION
SCALE: 3/4 FULL
(NAIL FIN MOUNT)



SECTION
SCALE: 3/4 FULL
(INSTALLATION CLIP MOUNT CONDITION)

NO.	REVISION	DESCRIPTION	BY	DATE
1				
2				
3				
4				
5				



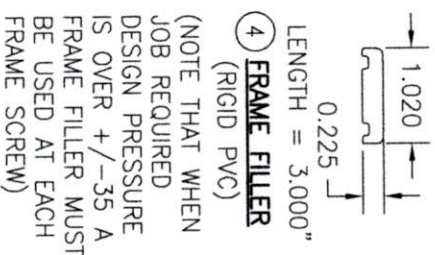
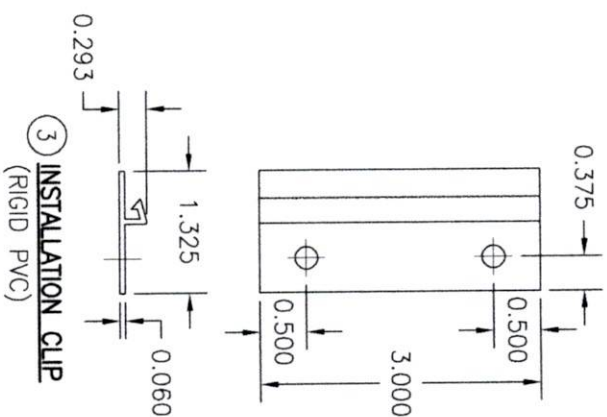
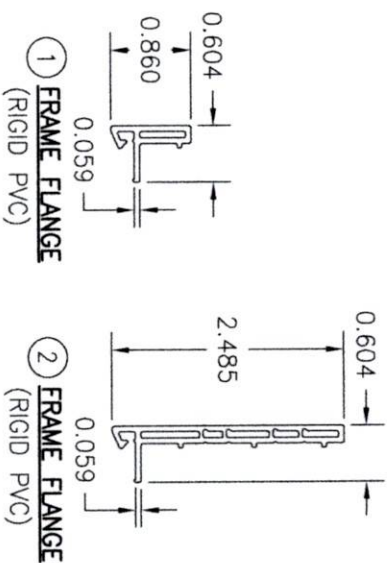
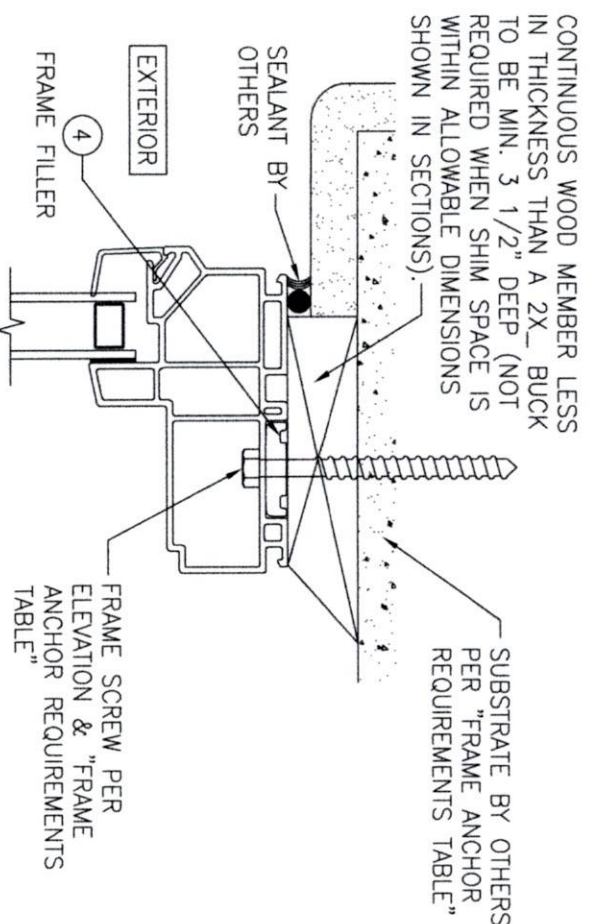
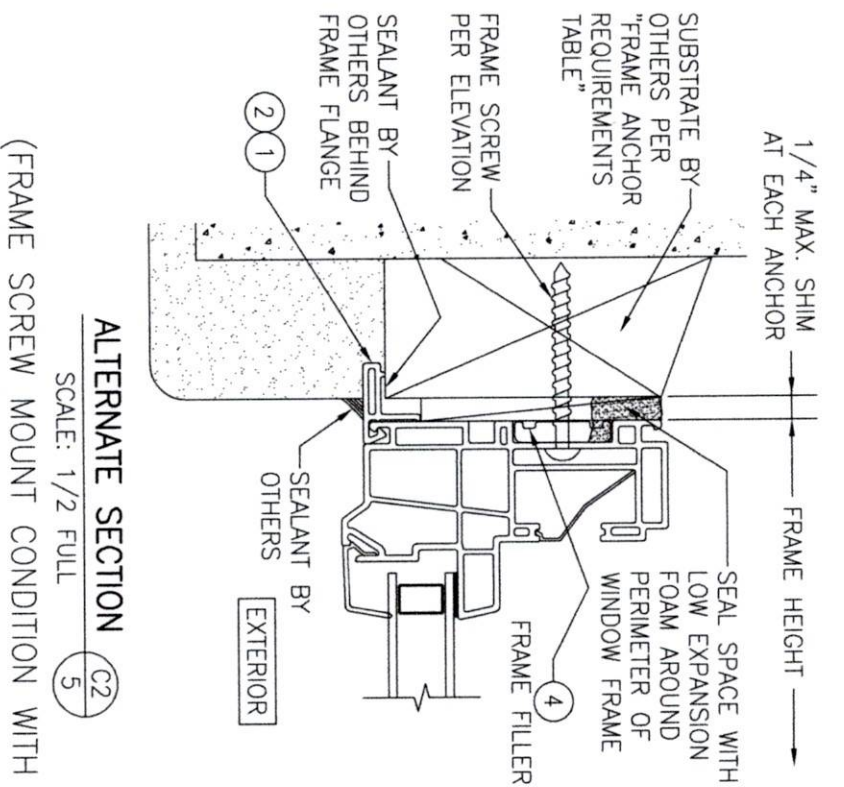
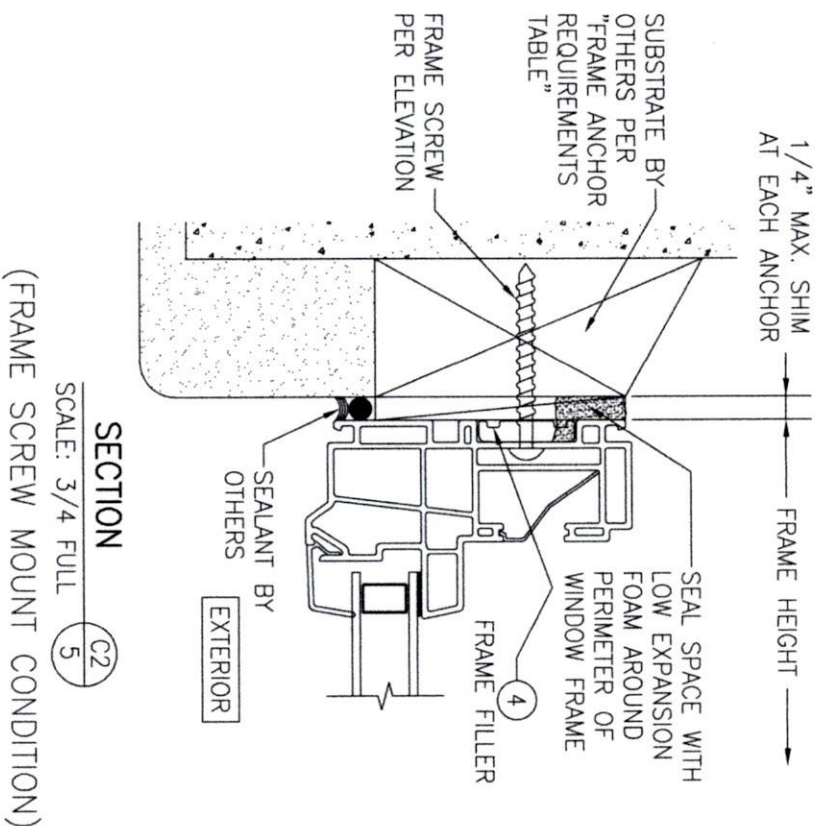
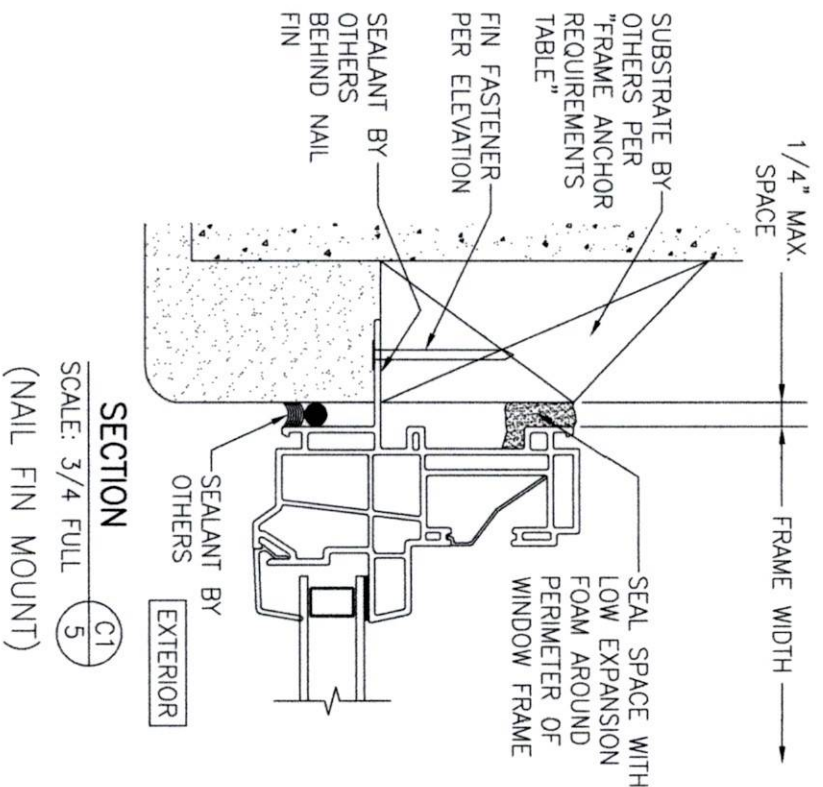
PELLA CORPORATION
102 MAIN STREET
PELLA, IA 50219
641-621-1000

DRAWING TITLE
250 SERIES VINYL SINGLE HUNG NON-IMPACT WINDOW

CONSULTANTS
W. W. SCHAEFER ENGINEERING & CONSULTING, P.A.
26376 NADIR ROAD; UNIT 309
PUNTA GORDA, FL 33983
PHONE: 561-744-3424

CERTIFICATION
WARREN W. SCHAEFER, P.E.
P.E. NO. 44135

DRAWING NO.
1867
REV.
C
SHEET NO.
4 OF 5



NO.	REVISION	DESCRIPTION	BY	DATE
1	2			

PELLA CORPORATION
102 MAIN STREET
PELLA, IA 50219
641-621-1000



DRAWING TITLE
250 SERIES VINYL SINGLE HUNG NON-IMPACT WINDOW

CONSULTANTS
W. W. SCHAEFER ENGINEERING & CONSULTING, P.A.
26376 NADIR ROAD; UNIT 309
PUNTA GORDA, FL 33983
PHONE: 561-744-3424

CERTIFICATION
WARREN W. SCHAEFER, P.E.
P.E. NO. 44135

DRAWING NO. 1867
SHEET NO. 5 OF 5
REV. C


[DBPR HOME](#) | [ABOUT DBPR](#) | [DBPR DIVISIONS](#) | [CONTACT DBPR](#)
[BCIS Home](#) | [Log In](#) | [User Registration](#) | [Hot Topics](#) | [Submit Surcharge](#) | [Stats & Facts](#) | [Publications](#) | [Contact Us](#) | [BCIS Site Map](#) | [Links](#) | [Search](#)

Product Approval
 USER: Public User

[Product Approval Menu](#) > [Product or Application Search](#) > **Application List**

 OFFICE OF THE
 SECRETARY

Search Criteria
[Refine Search](#)

Code Version	2020	FL#	16812.6
Application Type	ALL	Product Manufacturer	ALL
Category	ALL	Subcategory	ALL
Application Status	ALL	Compliance Method	ALL
Quality Assurance Entity	ALL	Quality Assurance Entity Contract Expired	ALL
Product Model, Number or Name	ALL	Product Description	ALL
Approved for use in HVHZ	ALL	Approved for use outside HVHZ	ALL
Impact Resistant	ALL	Design Pressure	ALL
Other	ALL		

Search Results - Applications

FL#	Type	Manufacturer	Validated By	Status
FL16812-R6 History	Revision	Pella Corporation FL#: FL16812.6 Model: 250 Series Single Hung Window Description: 96" x 72" vinyl non-impact double window with fully reinforced stiles & rails Category: Windows Subcategory: Single Hung	T.E. Lunn, PE, LLC (561) 625-6455	Approved *

*Approved by DBPR. Approvals by DBPR shall be reviewed and ratified by the POC and/or the Commission if necessary.

[Contact Us](#) :: 2601 Blair Stone Road, Tallahassee FL 32399 Phone: 850-487-1824

 The State of Florida is an AA/EEO employer. [Copyright 2007-2013 State of Florida](#). :: [Privacy Statement](#) :: [Accessibility Statement](#) :: [Refund Statement](#)

Under Florida law, email addresses are public records. If you do not want your e-mail address released in response to a public-records request, do not send electronic mail to this entity. Instead, contact the office by phone or by traditional mail. If you have any questions, please contact 850.487.1395. *Pursuant to Section 455.275(1), Florida Statutes, effective October 1, 2012, licensees licensed under Chapter 455, F.S. must provide the Department with an email address if they have one. The emails provided may be used for official communication with the licensee. However email addresses are public record. If you do not wish to supply a personal address, please provide the Department with an email address which can be made available to the public. To determine if you are a licensee under Chapter 455, F.S., please click [here](#).

Product Approval Accepts:


GENERAL NOTES:

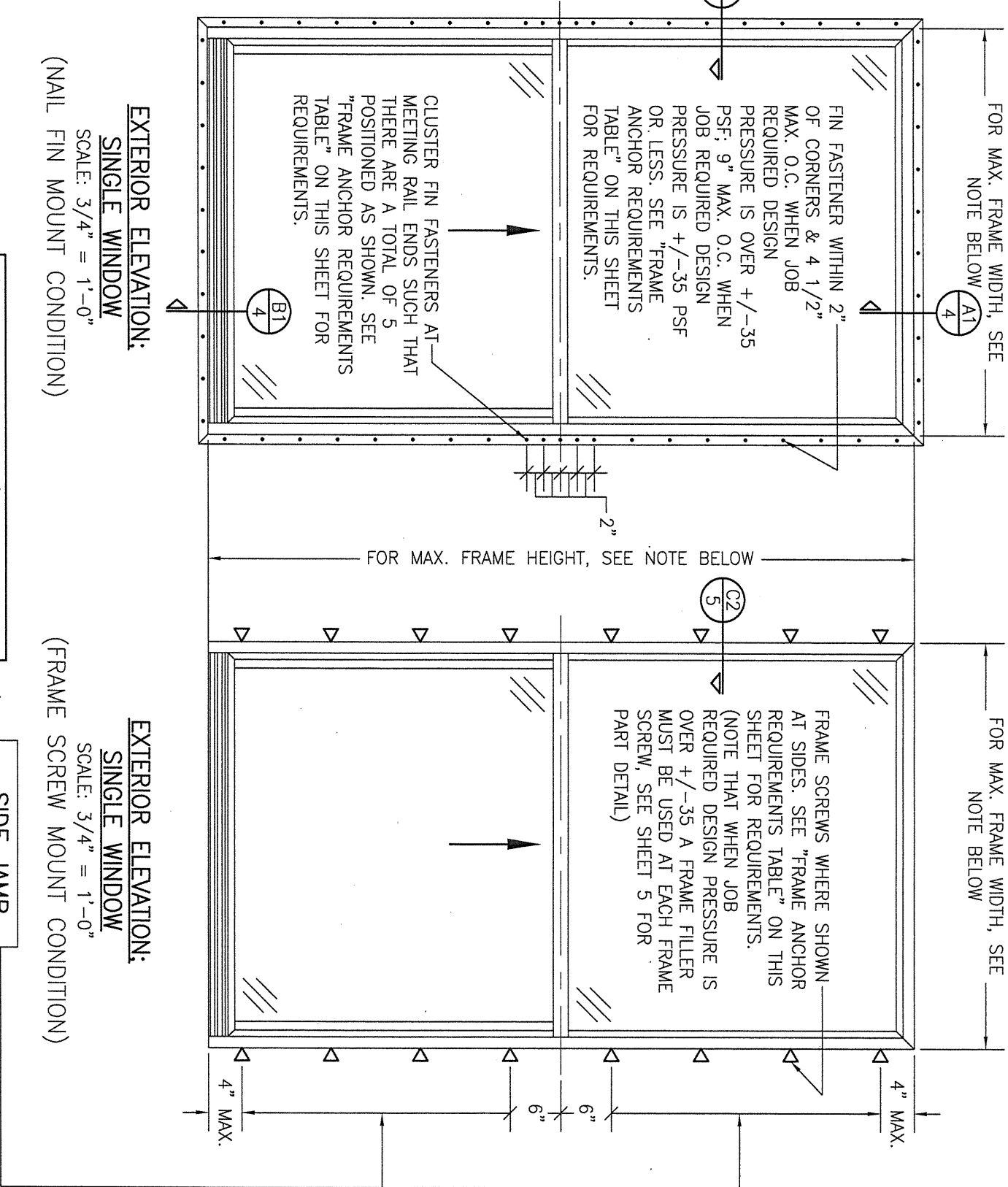
1. ALL FASTENERS SHALL BE IN ACCORDANCE WITH THESE DRAWINGS. SPECIFIED ANCHOR EMBED TO BASE MATERIAL SHALL BE BEYOND WALL FINISH OR STUCCO.
2. OPENINGS, BUCKING & BUCKING FASTENERS MUST BE PROPERLY DESIGNED & INSTALLED TO TRANSFER WIND LOADS TO THE STRUCTURE.
3. THESE NON-IMPACT RATED PRODUCT INSTALLATIONS ARE IN ACCORDANCE WITH AND MEET THE REQUIREMENTS OF THE FLORIDA BUILDING CODE (FBC).
4. ALL ANCHORS SECURING PRODUCT FRAMES TO PRESSURE TREATED BUCKS OR WOOD FRAMING SHALL BE CAPABLE OF RESISTING CORROSION CAUSED BY THE PRESSURE TREATING CHEMICALS IN THE WOOD.
5. MATERIALS, INCLUDING BUT NOT LIMITED TO STEEL SCREWS, THAT COME INTO CONTACT WITH OTHER DISSIMILAR MATERIALS SHALL MEET THE REQUIREMENTS OF FLORIDA BUILDING CODE CHAPTER 20.
6. TO THE BEST OF OUR KNOWLEDGE, THE PRODUCT SHOWN HEREIN IS CERTIFIED & QUALITY ASSURED BY A FLORIDA STATE APPROVED CERTIFICATION/OA ENTRY & SHALL BE LABELED IN ACCORDANCE WITH THE FBC AND THE FLORIDA DEPARTMENT OF BUSINESS & PROFESSIONAL REGULATION SPECIFICATIONS. PRODUCT ASSEMBLY IS NOT PART OF THIS DRAWING AND SHALL BE IN ACCORDANCE WITH THE MANUFACTURER'S QUALITY ASSURANCE SPECIFICATIONS & TESTING REPORTS.
7. CERTIFICATION OF THESE PRODUCT INSTALLATIONS SHALL BE CONSIDERED VOID IF ANY OF THE FOLLOWING APPLY: 1) PRODUCT IS INSTALLED WITHOUT A BUILDING PERMIT FROM THE APPLICABLE LOCAL BUILDING DEPARTMENT. 2) PRODUCT IS INSTALLED BY ANYONE OTHER THAN A LICENSED CONTRACTOR EXPERIENCED WITH INSTALLATIONS OF THIS TYPE OF PRODUCT. 3) IF CHANGES HAVE OCCURRED TO THE PRODUCT'S CERTIFICATION ENTRY'S CERTIFICATE THAT CAUSE THESE INSTALLATIONS TO BE INCORRECT OR INCONSISTENT WITH WHAT HAS BEEN TESTED.
8. THE LEAST DESIGN PRESSURE SPECIFIED EITHER IN THIS DRAWING OR IN THE PRODUCT'S CERTIFICATION SHALL CONTROL FOR THE INSTALLED PRODUCT.
9. THESE DRAWINGS CERTIFY THE PRODUCT INSTALLATION ONLY. WATER PROOFING OF THE INSTALLED PRODUCT IS NOT PART OF THIS INSTALLATION CERTIFICATION. THAT RESPONSIBILITY SHALL BE THAT OF THE MANUFACTURER &/OR INSTALLER.

INSTALLATION EVALUATION IS BASED ON APPLICABLE ANCHOR STANDARDS AND/OR INFORMATION & RESULTS FROM APPLICABLE TEST REPORTS. THE FLORIDA BUILDING CODE VERSION CONSIDERED WITH THE EVALUATION WAS THAT IN FORCE AT THE TIME OF THE EVALUATION. IN THE EVENT OF CODE VERSION CHANGES/UPDATES OR IN THE EVENT THAT NEW OR ADDITIONAL TESTING IS COMPLETED ON THE REFERENCED PRODUCT, PRIOR TO STATING CODE COMPLIANCE WITH THE STATE, THE MANUFACTURER SHALL CONFIRM WITH THE INSTALLATION EVALUATION ENGINEER OF RECORD THAT THE INSTALLATIONS SPECIFIED HERE-IN ARE CURRENT WITH THE THEN CURRENT TESTING, CODE AND APPLICABLE STANDARDS.

FRAME ANCHOR REQUIREMENTS TABLE

OPENING TYPE (SUBSTRATE)	FRAME/CLIP/NAIL FIN TO OPENING FASTENER TYPE	MINIMUM EMBED	MINIMUM EDGE DIST.
(1) FRAME SCREWS			
MIN. 2X4 WOOD FRAME OR BUCK (MIN. GR. 3 & G=0.55)	NO. 10 SMS OR WOOD SCREW	1 1/4"	3/4"
MIN. 18 GA. 33 KSI METAL STUD	NO. 10 GR. 5 SELF TAP/DRILL SCREW	FULL	1/2"
MIN. 1/8" THK A36 STEEL	NO. 10 GR. 5 SELF TAP/DRILL SCREW	FULL	1/2"
MIN. 1/8" THK 6063-T5 ALUM.	NO. 10 GR. 5 SELF TAP/DRILL SCREW	FULL	1/2"
MIN. C-90 CMU OR 2500 PSI CONCRETE	(2) 1/4" CONCRETE SCREW	1 1/4"	2"
(1) INSTALLATION CLIP SCREWS			
MIN. 2X4 WOOD FRAME OR BUCK (MIN. GR. 3 & G=0.55)	NO. 10 SMS SCREW	1 1/4"	1/2"
MIN. 18 GA. 33 KSI METAL STUD	NO. 10 GR. 5 SELF TAP/DRILL SCREW	FULL	1/2"
MIN. 1/8" THK A36 STEEL	NO. 10 GR. 5 SELF TAP/DRILL SCREW	FULL	1/2"
MIN. 1/8" THK 6063-T5 ALUM.	NO. 10 GR. 5 SELF TAP/DRILL SCREW	FULL	1/2"
2500 PSI CONCRETE	(2) 3/16" CONCRETE SCREW	1 1/4"	2"
(3) NAILING FIN FASTENERS			
MIN. 2X4 WOOD FRAME OR BUCK (MIN. GR. 3 & G=0.55)	NO. 8 SMS SCREW	1 3/8"	1/2"
MIN. 2X4 WOOD FRAME OR BUCK (MIN. GR. 3 & G=0.55)	11 GA. ROOFING NAIL	1 3/8"	1/2"
MIN. 1/8" THK A36 STEEL	NO. 8 GR. 5 SELF TAP/DRILL SCREW	FULL	1/2"
MIN. 1/8" THK 6063-T5 ALUM.	NO. 8 GR. 5 SELF TAP/DRILL SCREW	FULL	1/2"

- (1) FRAME AND INSTALLATION CLIP SCREWS SHALL BE A PAN OR HEX HEAD SCREW.
- (2) CONCRETE SCREWS SHALL BE ELCO ULTRACONS (C.S.), ELCO CRETE-FLEX (S.S.), ITW RAMSET/RED HEAD TAPCONS (C.S. OR S.S.) OR HILTI KWIK-CON II (C.S OR S.S.).
- (3) WHEN SCREWS ARE USED WITH THE NAIL FIN, THEY MUST BE A PAN HEAD OR WAFFLE HEAD SCREW OR HAVE A FLAT WASHER AT THE SCREW HEAD.



NOTE: FOR MAX. SINGLE WINDOW FRAME DIMENSIONS AND ALLOWABLE DESIGN PRESSURE, SEE APPLICABLE FLORIDA APPROVAL

SIDE JAMB ANCHOR SPACING TABLE		MAXIMUM O.C. SPACING (IN.)
MAXIMUM FRAME WIDTH (IN.)		
54		12
48		13
36		17

ALTERNATE ANCHOR/SUBSTRATE EVALUATION NOTE:
ALL ALTERNATE ANCHORS IN THEIR SPECIFIED SUBSTRATES HAVE BEEN ANALYZED IN ACCORDANCE WITH THEIR APPLICABLE STANDARD(S) AND ARE FOUND TO BE EQUIVALENT TO OR STRONGER THAN THE ANCHOR(S) USED IN TESTING WITH THIS PRODUCT.

THESE DRAWINGS ARE APPLICABLE ONLY TO THE PRODUCT SPECIFIED. THEY MAY NOT BE USED FOR THE ASSEMBLY AND/OR INSTALLATION OF ANY OTHER PRODUCT NOR MAY THEY BE USED FOR RATIONAL AND/OR LOCAL APPROVAL OF ANY PRODUCT NOT PRODUCED BY THE MANUFACTURER STATED ON THESE DRAWINGS.

NO.	REVISION DESCRIPTION	BY	DATE
A1	UPDATE FOR NEW TESTING	W.W.S.	03/08/16
B1	ADDED 109 X 72 WINDOW	W.W.S.	11/02/20

DRAWN BY: W.R.M.	CHECKED BY: W.W.S.
DATE: 02/05/14	

PELLA CORPORATION
102 MAIN STREET
PELLA, IA 50219
641-621-1000

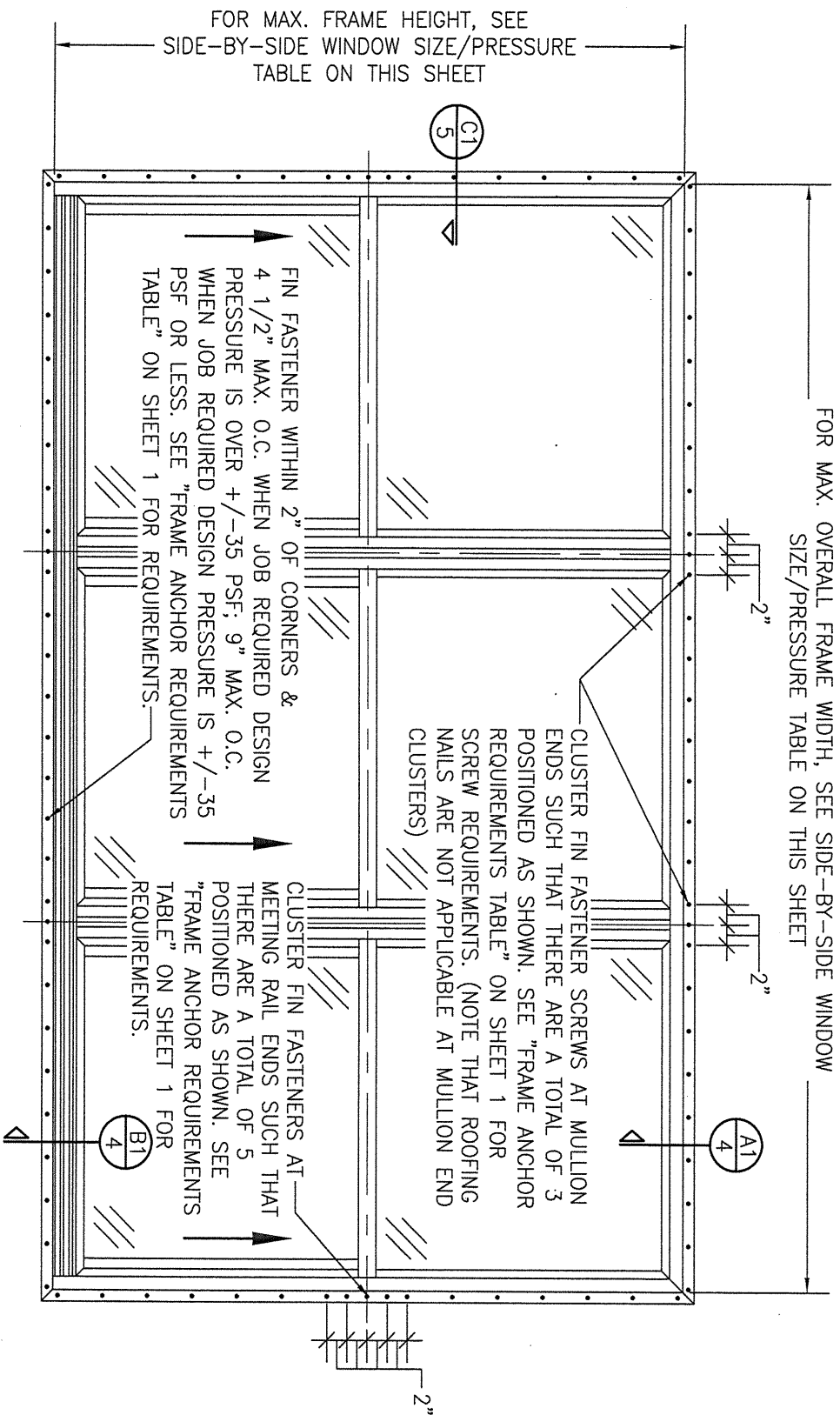
W. W. SCHAEFER ENGINEERING & CONSULTING, P.A. (CA 6809)
7480 150TH COURT NORTH
PALM BEACH GARDENS, FL 33418
PHONE: 561-744-3424

CERTIFICATION

NOV 02 2020

WARREN W. SCHAEFER, P.E.
P.E. NO. 44135

DRAWING NO. 1867
SHEET NO. 1 OF 5

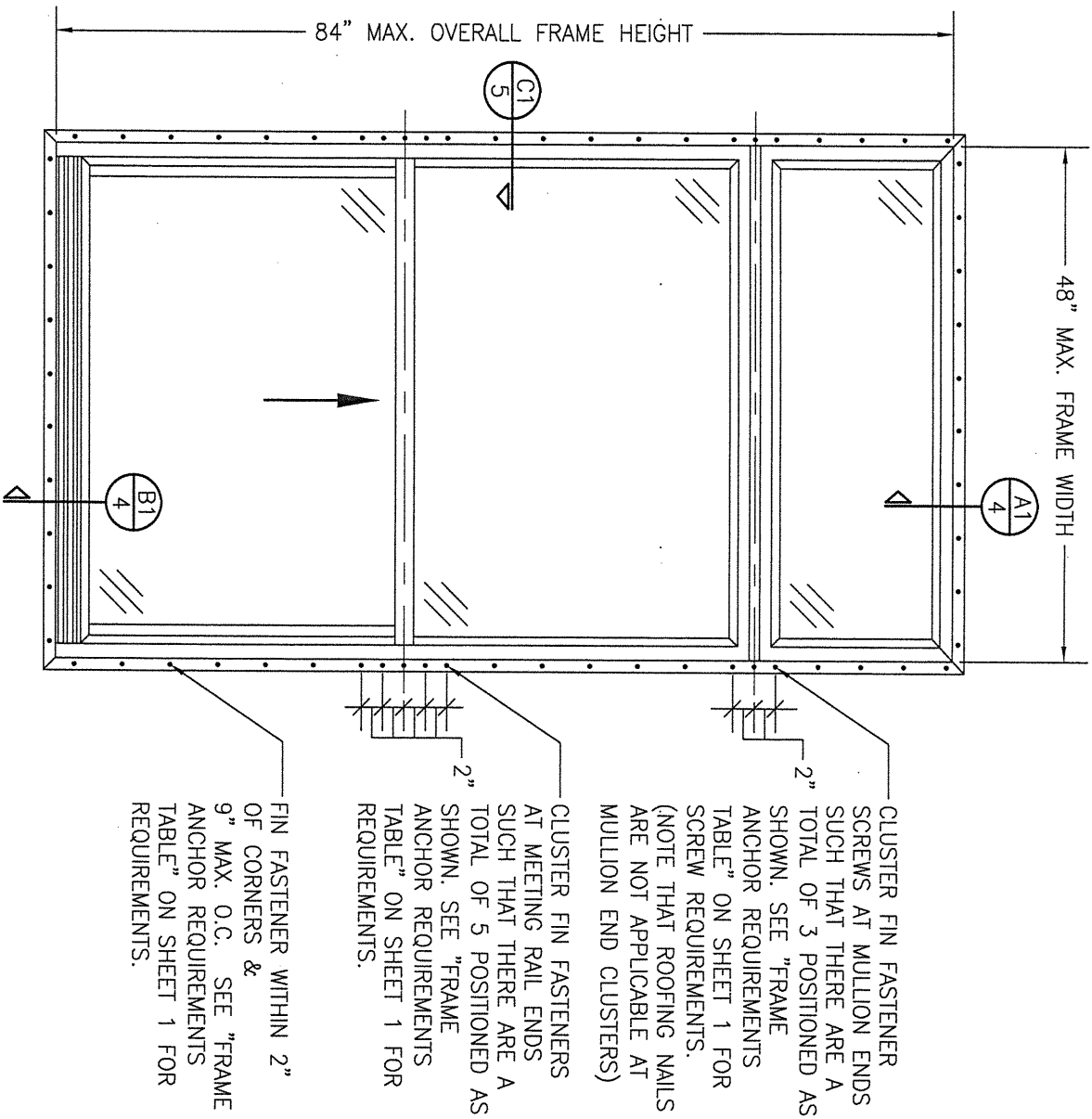


**EXTERIOR ELEVATION:
SIDE-BY-SIDE WINDOW**

SCALE: 3/4" = 1'-0"
(NAIL FIN MOUNT CONDITION)

**ALLOWABLE SIDE-BY-SIDE
WINDOW SIZE/PRESSURE
TABLE**

MAXIMUM OVERALL FRAME WIDTH DIMENSION (IN.)	MAXIMUM FRAME HEIGHT DIMENSION (IN.)	ALLOWABLE PRESSURE (+/- PSF)
TRIPLE WINDOW		
109	63	35
109	72	30
DOUBLE WINDOW		
96	72	35
72	65 1/2	50



**EXTERIOR ELEVATION:
SINGLE WINDOW WITH TRANSOM**

SCALE: 3/4" = 1'-0"
(NAIL FIN MOUNT CONDITION)

**ALLOWABLE DESIGN PRESSURE
(TRANSOM UNITS ONLY)**

+/-35 PSF

PRESSURES & CONDITIONS SHOWN IN THIS DRAWING ARE GOVERNED BY INSTALLATION REQUIREMENTS ONLY. THE GOVERNING CONDITIONS ON ANY SPECIFIC PRODUCT SHALL BE THE LESSER OF THOSE SPECIFIED IN THE PRODUCTS STATE APPROVAL OR THAT SHOWN IN THESE DRAWINGS.

NO.	REVISION	DESCRIPTION	BY	DATE

DRAWN BY:
CHECKED BY:
DATE: 02/05/14
DATE: 02/05/14

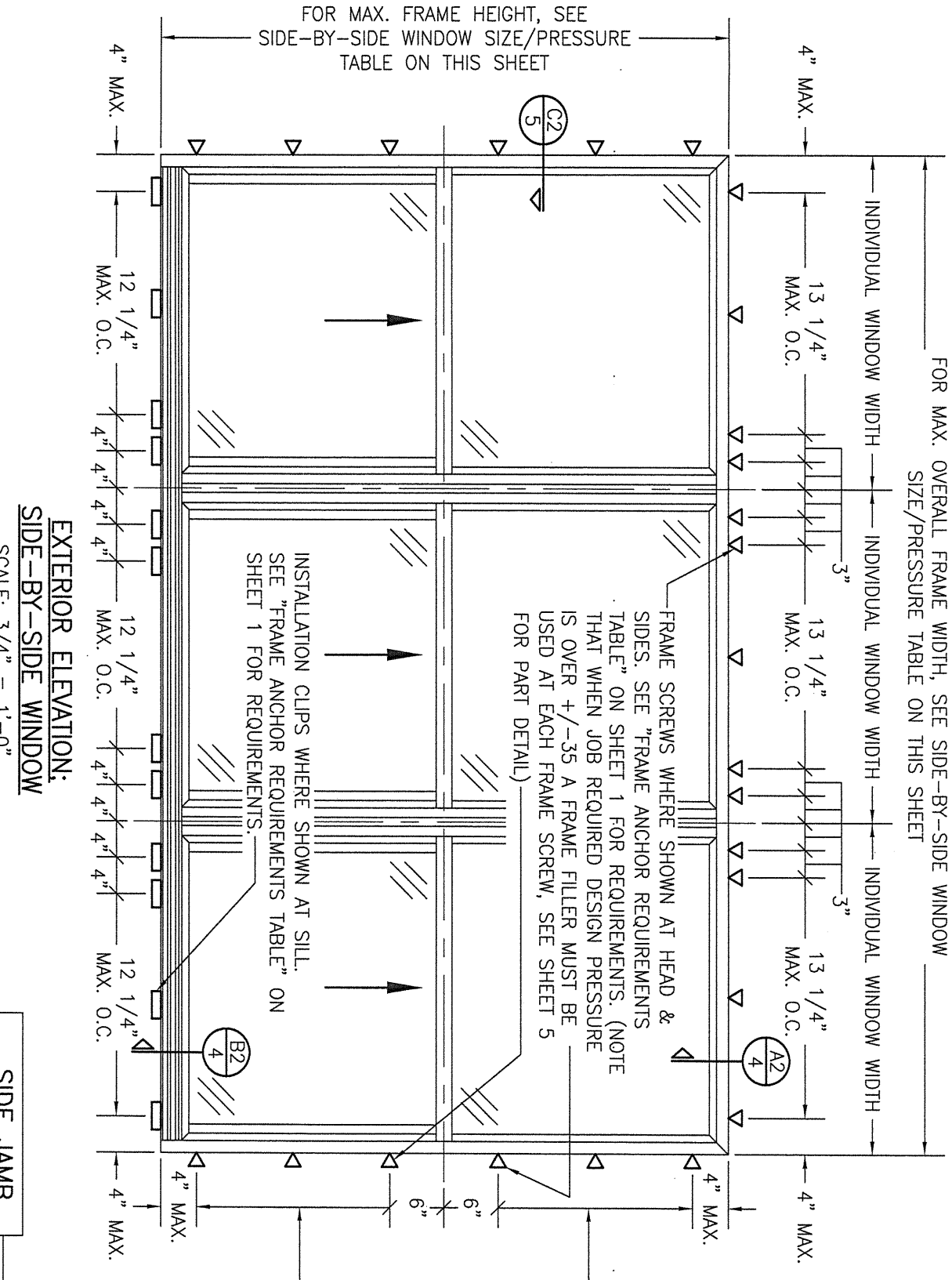
PELLA CORPORATION
102 MAIN STREET
PELLA, IA 50219
641-621-1000



W. W. SCHAEFER ENGINEERING & CONSULTING, P.A. (CA 6809)
7480 150TH COURT NORTH
PALM BEACH GARDENS, FL 33418
PHONE: 561-744-3424

CERTIFICATION
NOV 02 2020
WARREN W. SCHAEFER, P.E.
P.E. NO. 44135

DRAWING NO. 1867
SHEET NO. 2 OF 5



EXTERIOR ELEVATION:
SIDE-BY-SIDE WINDOW

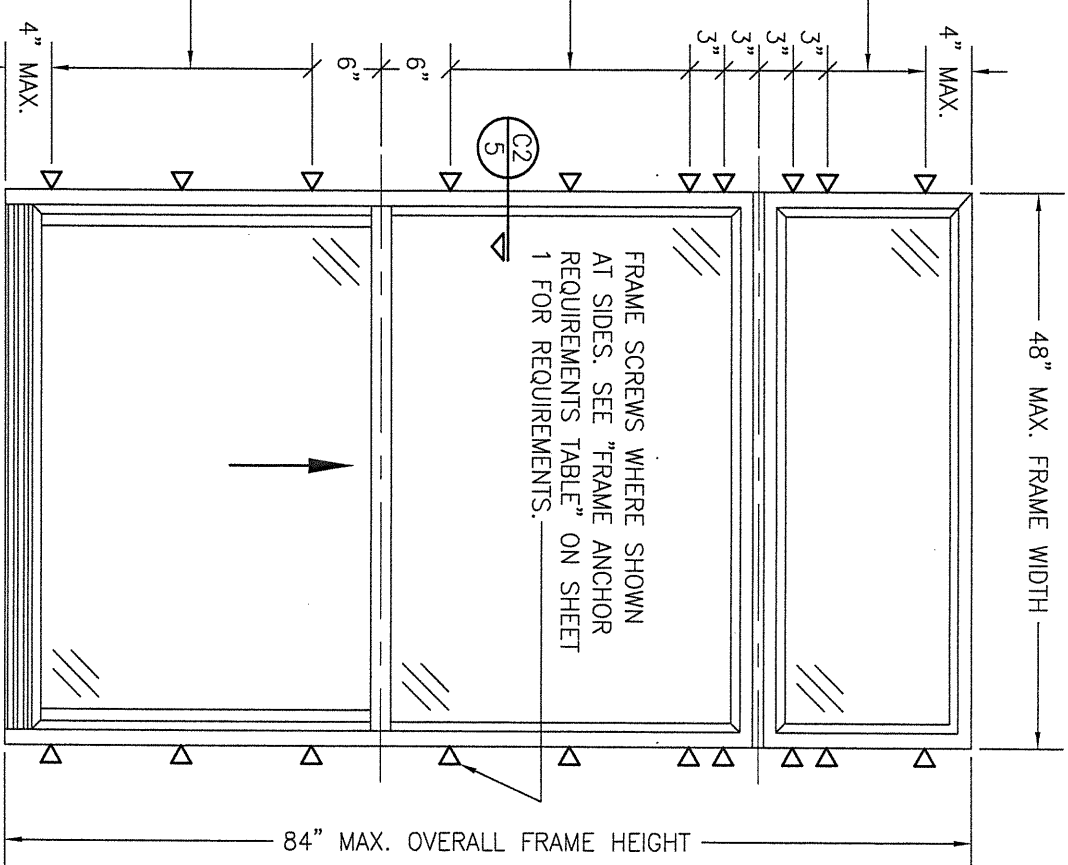
SCALE: 3/4" = 1'-0"

(FRAME SCREW AND CLIP MOUNT CONDITION)

ALLOWABLE SIDE-BY-SIDE
WINDOW SIZE/PRESSURE
TABLE

MAXIMUM OVERALL FRAME WIDTH DIMENSION (IN.)	MAXIMUM FRAME HEIGHT DIMENSION (IN.)	ALLOWABLE PRESSURE (+/- PSF)
TRIPLE WINDOW		
109	63	35
109	72	30
DOUBLE WINDOW		
96	72	35
72	65 1/2	50

SIDE JAMB ANCHOR SPACING TABLE		
MAXIMUM INDIVIDUAL WINDOW WIDTH (IN.)	MAXIMUM O.C. SPACING (IN.)	
48	13	
36	17	



EXTERIOR ELEVATION:
SINGLE WINDOW WITH TRANSOM

SCALE: 3/4" = 1'-0"


(FRAME SCREW MOUNT CONDITION)

ALLOWABLE DESIGN PRESSURE (TRANSOM UNITS ONLY)
+/-35 PSF

PRESSURES & CONDITIONS SHOWN IN THIS
DRAWING ARE GOVERNED BY INSTALLATION
REQUIREMENTS ONLY. THE GOVERNING
CONDITIONS ON ANY SPECIFIC PRODUCT
SHALL BE THE LESSER OF THOSE SPECIFIED
IN THE PRODUCTS STATE APPROVAL OR THAT
SHOWN IN THESE DRAWINGS.

NO.	REVISION	DESCRIPTION	BY	DATE

MANUFACTURER

 PELLA CORPORATION
102 MAIN STREET
PELLA, IA 50219
641-621-1000

DRAWING TITLE

250 SERIES VINYL SINGLE HUNG NON-IMPACT WINDOW

CONSULTANTS

W. W. SCHAEFER ENGINEERING
& CONSULTING, P.A. (CA 6809)
7480 150TH COURT NORTH
PALM BEACH GARDENS, FL 33418
PHONE: 561-744-3424

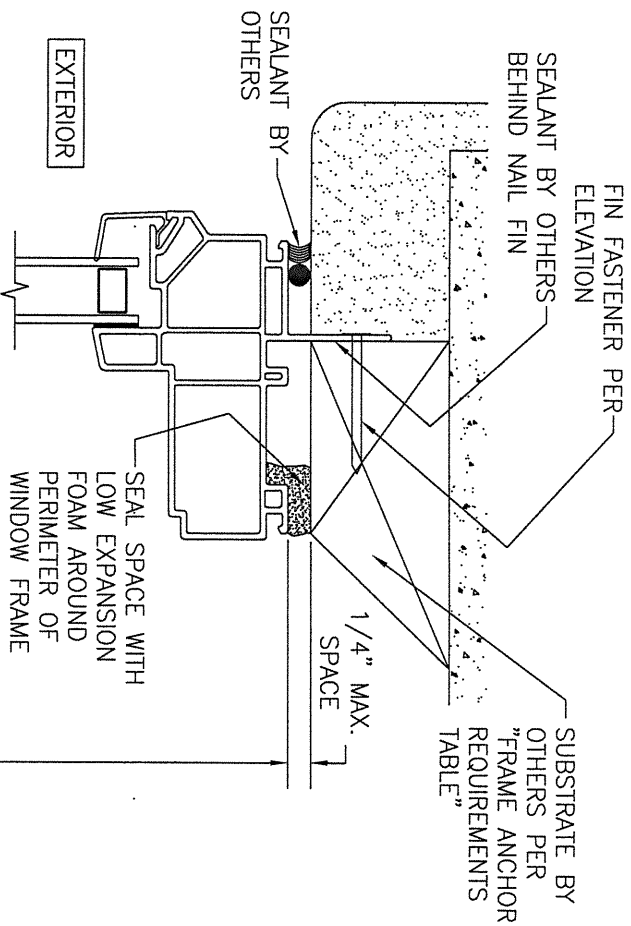
CERTIFICATION

NOV 02 2020

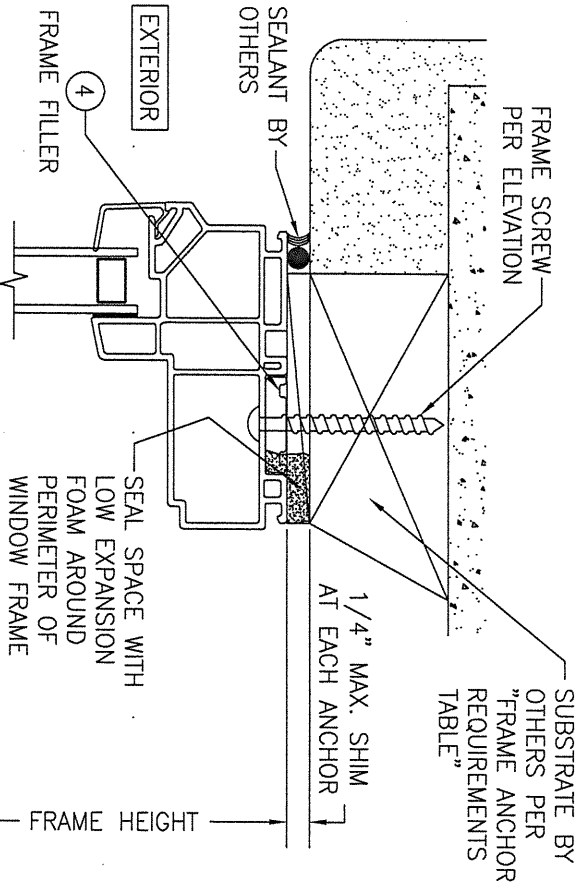
WARREN W. SCHAEFER, P.E.
P.E. NO. 44135

DRAWING NO. 1867

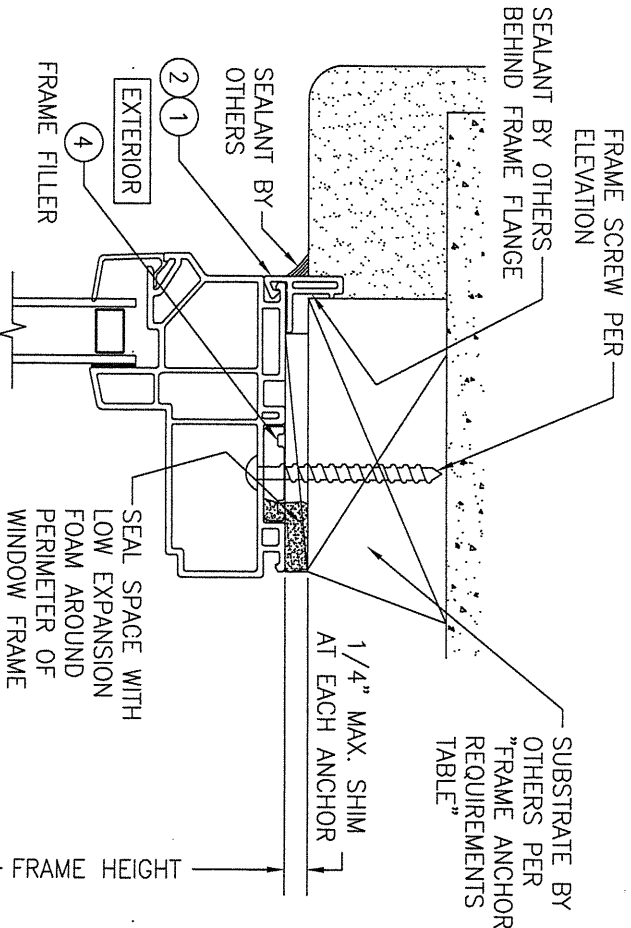
SHEET NO. 3 OF 5



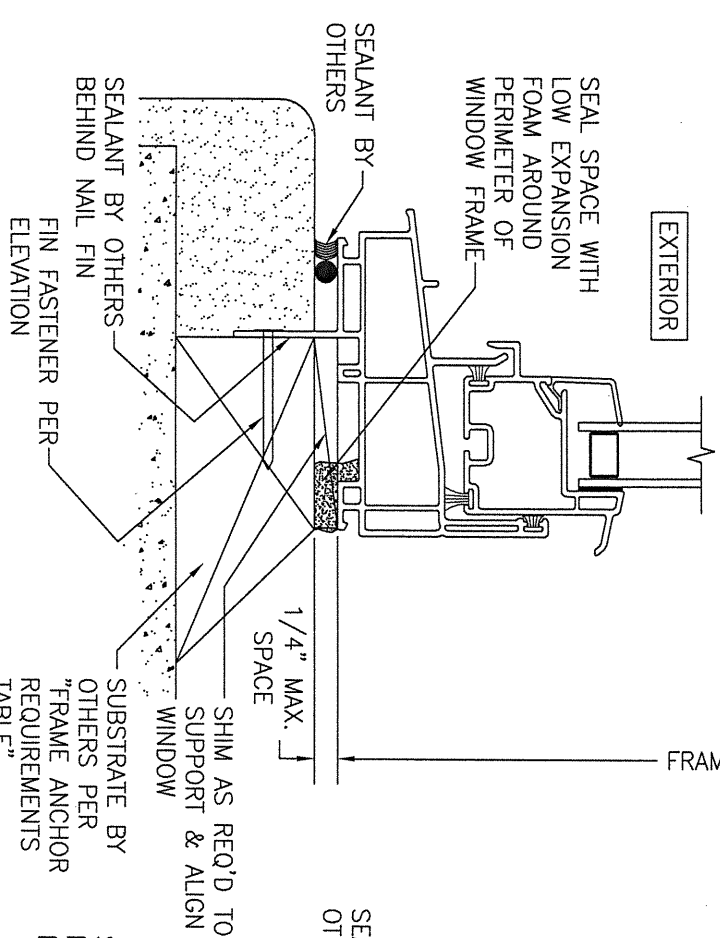
SECTION A1
SCALE: 3/4 FULL
(NAIL FIN MOUNT)



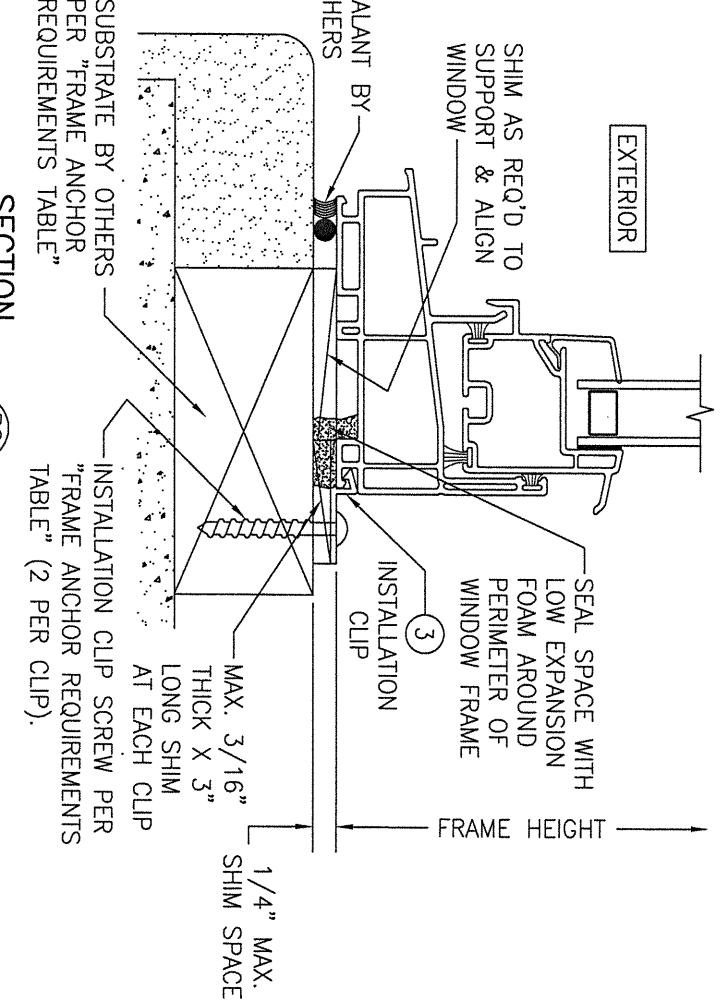
SECTION A2
SCALE: 3/4 FULL
(FRAME SCREW MOUNT CONDITION)



ALTERNATE SECTION A2
SCALE: 1/2 FULL
(FRAME SCREW MOUNT CONDITION WITH FLANGE)



SECTION B1
SCALE: 3/4 FULL
(NAIL FIN MOUNT)

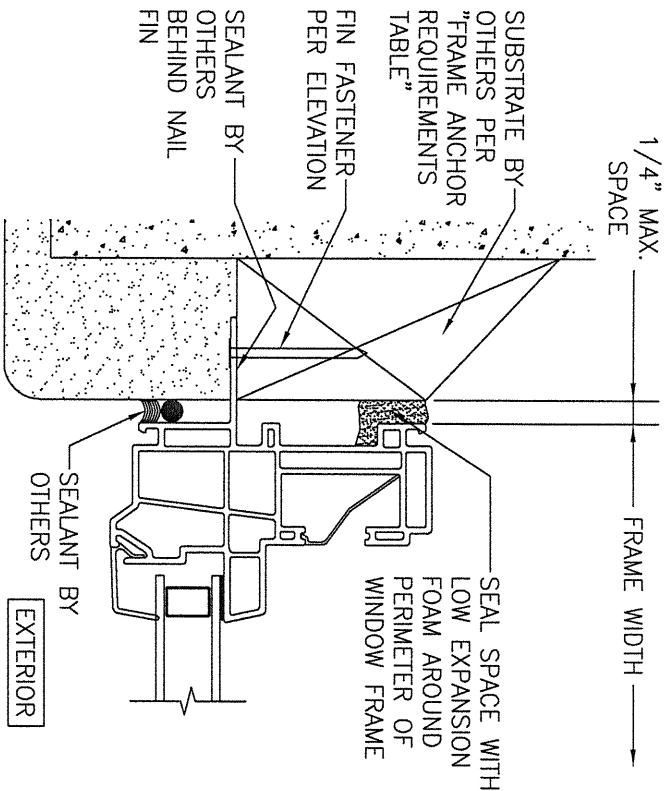


SECTION B2
SCALE: 3/4 FULL
(INSTALLATION CLIP MOUNT CONDITION)

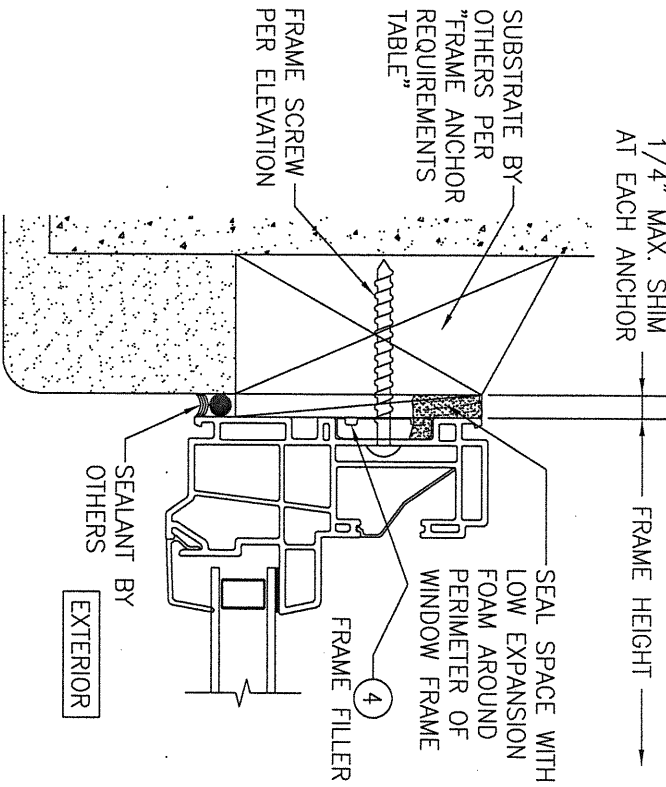
NO.	REVISION	DESCRIPTION	BY	DATE
1	2			
2				
3				
4				

DRAWING TITLE 250 SERIES VINYL SINGLE HUNG NON-IMPACT WINDOW		MANUFACTURER PELLA CORPORATION 102 MAIN STREET PELLA, IA 50219 641-621-1000	
CONSULTANTS W. W. SCHAEFER ENGINEERING & CONSULTING, P.A. (CA 6809) 7480 150TH COURT NORTH PALM BEACH GARDENS, FL 33418 PHONE: 561-744-3424			

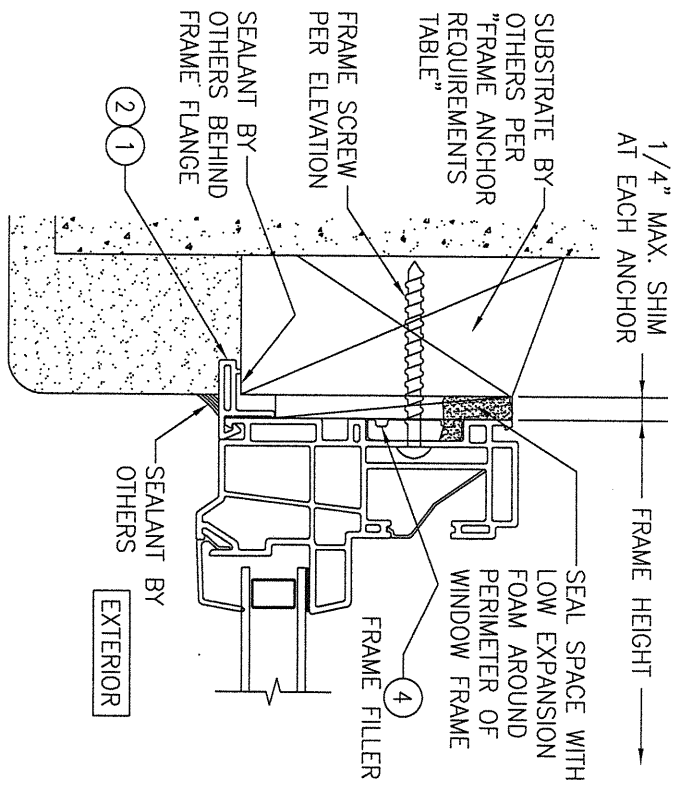
CERTIFICATION NOV 02 2020 WARREN W. SCHAEFER, P.E. P.E. NO. 44135	DRAWING NO. 1867 REV. B	SHEET NO. 4 OF 5
--	----------------------------------	---------------------



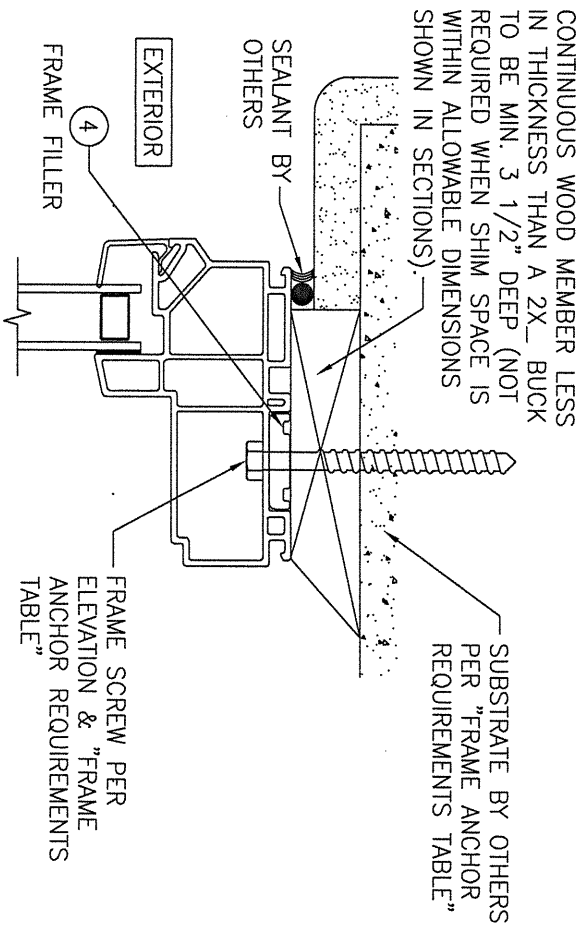
SECTION C1
SCALE: 3/4 FULL
(NAIL FIN MOUNT)



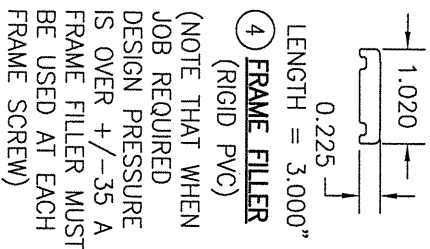
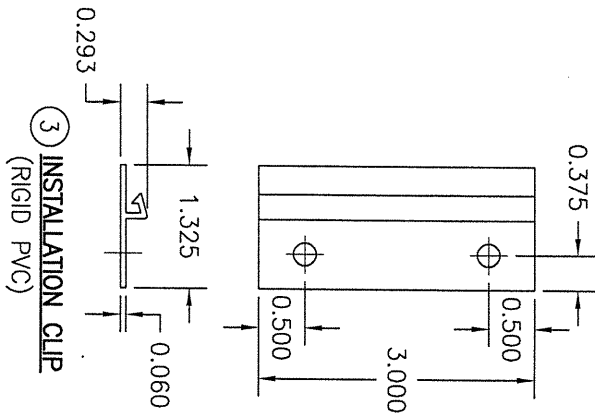
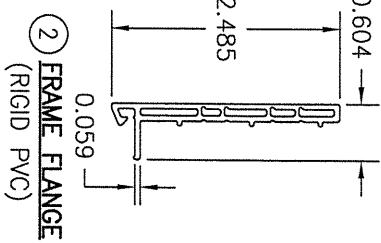
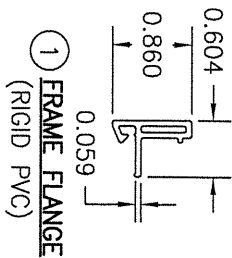
SECTION C2
SCALE: 3/4 FULL
(FRAME SCREW MOUNT CONDITION)



ALTERNATE SECTION C2
SCALE: 1/2 FULL
(FRAME SCREW MOUNT CONDITION WITH FLANGE)



OPTIONAL DIRECT MOUNT DETAIL
TO SUBSTRATE WITH SPACER
(HEAD SECTION SHOWN; SIDES ARE INSTALLED THE SAME)
(DIRECT MOUNT CONDITION IS NOT APPLICABLE AT SILL)
(FOR DETAIL NOT SHOWN, SEE OTHER SECTIONS)





Product Approval
USER: Public User

[Product Approval Menu](#) > [Product or Application Search](#) > **Application List**

► OFFICE OF THE
SECRETARY

Search Criteria

[Refine Search](#)

Code Version	2020	FL#	16811.2
Application Type	ALL	Product Manufacturer	ALL
Category	ALL	Subcategory	ALL
Application Status	ALL	Compliance Method	ALL
Quality Assurance Entity	ALL	Quality Assurance Entity Contract Expired	ALL
Product Model, Number or Name	ALL	Product Description	ALL
Approved for use in HVHZ	ALL	Approved for use outside HVHZ	ALL
Impact Resistant	ALL	Design Pressure	ALL
Other	ALL		

Search Results - Applications

FL#	Type	Manufacturer	Validated By	Status
FL16811-R4 History	Revision	Pella Corporation FL#: FL16811.2 Model: 250 Series Fixed Window Description: 72" x 72" vinyl non-impact single window Category: Windows Subcategory: Fixed	Terrence E. Lunn, PE (561) 625-6455	Approved *

*Approved by DBPR. Approvals by DBPR shall be reviewed and ratified by the POC and/or the Commission if necessary.

[Contact Us](#) :: [2601 Blair Stone Road, Tallahassee FL 32399](#) Phone: 850-487-1824

The State of Florida is an AA/EEO employer. [Copyright 2007-2013 State of Florida](#). :: [Privacy Statement](#) :: [Accessibility Statement](#) :: [Refund Statement](#)

Under Florida law, email addresses are public records. If you do not want your e-mail address released in response to a public-records request, do not send electronic mail to this entity. Instead, contact the office by phone or by traditional mail. If you have any questions, please contact 850.487.1395. *Pursuant to Section 455.275(1), Florida Statutes, effective October 1, 2012, licensees licensed under Chapter 455, F.S. must provide the Department with an email address if they have one. The emails provided may be used for official communication with the licensee. However email addresses are public record. If you do not wish to supply a personal address, please provide the Department with an email address which can be made available to the public. To determine if you are a licensee under Chapter 455, F.S., please click [here](#).

Product Approval Accepts:



GENERAL NOTES:

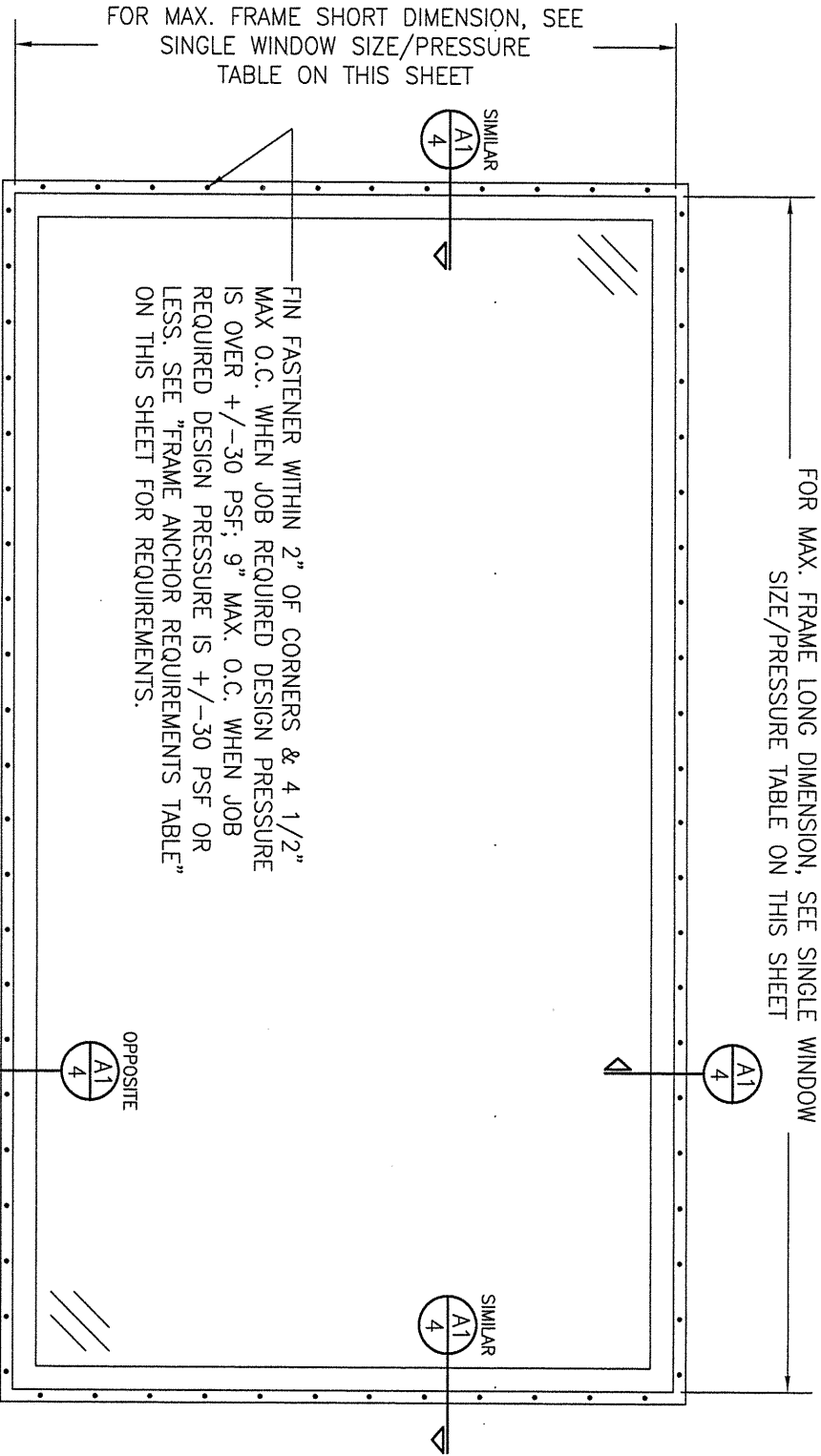
- 1. ALL FASTENERS SHALL BE IN ACCORDANCE WITH THESE DRAWINGS. SPECIFIED ANCHOR EMBED TO BASE MATERIAL SHALL BE BEYOND NAIL FINISH OR STUCCO.
- 2. OPENINGS, BUCKING & BUCKING FASTENERS MUST BE PROPERLY DESIGNED & INSTALLED TO TRANSFER WIND LOADS TO THE STRUCTURE.
- 3. THESE NON-IMPACT RATED WINDOW SYSTEM INSTALLATIONS ARE IN ACCORDANCE WITH AND MEET THE REQUIREMENTS OF THE FLORIDA BUILDING CODE (FBC).
- 4. ALL ANCHORS SECURING WINDOW FRAME TO PRESSURE TREATED BUCKS OR WOOD FRAMING SHALL BE CAPABLE OF RESISTING CORROSION CAUSED BY THE PRESSURE TREATING CHEMICALS IN THE WOOD.
- 5. MATERIALS, INCLUDING BUT NOT LIMITED TO STEEL SCREWS, THAT COME INTO CONTACT WITH OTHER DISSIMILAR MATERIALS SHALL MEET THE REQUIREMENTS OF FLORIDA BUILDING CODE CHAPTER 20.
- 6. TO THE BEST OF OUR KNOWLEDGE, THE WINDOWS SHOWN HEREIN ARE CERTIFIED & QUALITY ASSURED BY A FLORIDA STATE APPROVED CERTIFICATION/QA ENTITY & SHALL BE LABELED IN ACCORDANCE WITH THE FBC AND THE 9N-3 FLORIDA BUILDING COMMISSION SPECIFICATIONS. WINDOW ASSEMBLY IS NOT PART OF THIS DRAWING AND SHALL BE IN ACCORDANCE WITH THE MANUFACTURER'S QUALITY ASSURANCE SPECIFICATIONS & TESTING REPORTS.
- 7. CERTIFICATION OF THESE WINDOW INSTALLATIONS SHALL BE CONSIDERED VOID IF ANY OF THE FOLLOWING APPLY: 1) THEY ARE INSTALLED WITHOUT A BUILDING PERMIT FROM THE APPLICABLE LOCAL BUILDING DEPARTMENT. 2) IF THEY ARE INSTALLED BY ANYONE OTHER THAN A LICENSED CONTRACTOR EXPERIENCED WITH WINDOW INSTALLATIONS. 3) IF CHANGES HAVE OCCURRED TO THE PRODUCT'S CERTIFICATION ENTITY'S CERTIFICATE THAT CAUSE THESE INSTALLATIONS TO BE INCORRECT OR INCONSISTENT WITH WHAT HAS BEEN TESTED.
- 8. THE LEAST DESIGN PRESSURE SPECIFIED EITHER IN THIS DRAWING OR IN THE PRODUCTS CERTIFICATION SHALL CONTROL FOR THE INSTALLED WINDOW.
- 9. THESE DRAWINGS CERTIFY THE WINDOW INSTALLATION ONLY. WATER PROOFING OF THE INSTALLED WINDOWS IS NOT PART OF THIS INSTALLATION CERTIFICATION. THAT RESPONSIBILITY SHALL BE THAT OF THE MANUFACTURER &/OR INSTALLER.

INSTALLATION EVALUATION IS BASED ON APPLICABLE ANCHOR STANDARDS AND/OR INFORMATION & RESULTS FROM APPLICABLE TEST REPORTS. THE FLORIDA BUILDING CODE VERSION CONSIDERED WITH THE EVALUATION WAS THAT IN FORCE AT THE TIME OF THE EVALUATION. IN THE EVENT OF CODE VERSION CHANGES/UPDATES OR IN THE EVENT THAT NEW OR ADDITIONAL TESTING IS COMPLETED ON THE REFERENCED PRODUCT, PRIOR TO STATING CODE COMPLIANCE WITH THE STATE, THE MANUFACTURER SHALL CONFIRM WITH THE INSTALLATION EVALUATION ENGINEER OF RECORD THAT THE INSTALLATIONS SPECIFIED HERE-IN ARE CURRENT WITH THE THEN CURRENT TESTING, CODE AND APPLICABLE STANDARDS.

FRAME ANCHOR REQUIREMENTS TABLE

OPENING TYPE (SUBSTRATE)	FRAME/CLIP/NAIL FIN TO OPENING FASTENER TYPE	MINIMUM EMBED	MINIMUM EDGE DIST.
(1) FRAME SCREWS			
MIN. 2X4 WOOD FRAME OR BUCK (MIN. GR. 3 & G=0.55)	NO. 10 SMS OR WOOD SCREW	1 1/4"	3/4"
MIN. 18 GA. 33 KSI METAL STUD	NO. 10 GR. 5 SELF TAP/DRILL SCREW	FULL	1/2"
MIN. 1/8" THK A36 STEEL	NO. 10 GR. 5 SELF TAP/DRILL SCREW	FULL	1/2"
MIN. 1/8" THK 6063-T5 ALUM.	NO. 10 GR. 5 SELF TAP/DRILL SCREW	FULL	1/2"
MIN. C-90 CMU OR 2500 PSI CONCRETE	(2) 1/4" CONCRETE SCREW	1 1/4"	2"
(1) INSTALLATION CLIP SCREWS			
MIN. 2X4 WOOD FRAME OR BUCK (MIN. GR. 3 & G=0.55)	NO. 10 SMS SCREW	1 1/4"	1/2"
MIN. 18 GA. 33 KSI METAL STUD	NO. 10 GR. 5 SELF TAP/DRILL SCREW	FULL	1/2"
MIN. 1/8" THK A36 STEEL	NO. 10 GR. 5 SELF TAP/DRILL SCREW	FULL	1/2"
MIN. 1/8" THK 6063-T5 ALUM.	NO. 10 GR. 5 SELF TAP/DRILL SCREW	FULL	1/2"
2500 PSI CONCRETE	(2) 3/16" CONCRETE SCREW	1 1/4"	2"
(3) NAILING FIN FASTENERS			
MIN. 2X4 WOOD FRAME OR BUCK (MIN. GR. 3 & G=0.55)	NO. 8 SMS SCREW	1 3/8"	1/2"
MIN. 2X4 WOOD FRAME OR BUCK (MIN. GR. 3 & G=0.55)	11 GA. ROOFING NAIL	1 3/8"	1/2"
MIN. 1/8" THK A36 STEEL	NO. 8 GR. 5 SELF TAP/DRILL SCREW	FULL	1/2"
MIN. 1/8" THK 6063-T5 ALUM.	NO. 8 GR. 5 SELF TAP/DRILL SCREW	FULL	1/2"

- (1) FRAME AND INSTALLATION CLIP SCREWS SHALL BE A PAN OR HEX HEAD SCREW.
- (2) CONCRETE SCREWS SHALL BE ELCO ULTRACONS (C.S.), ELCO CRETE-FLEX (S.S.), ITW RAMSET/RED HEAD TAPCONS (C.S. OR S.S.) OR HILTI KWIK-CON II (C.S. OR S.S.).
- (3) WHEN SCREWS ARE USED WITH THE NAIL FIN, THEY MUST BE A WAFFLE HEAD SCREW OR HAVE A FLAT WASHER AT THE SCREW HEAD.



EXTERIOR ELEVATION:
SINGLE WINDOW

SCALE: 3/4" = 1'-0"
(NAIL FIN MOUNT CONDITION)

ALLOWABLE SINGLE WINDOW SIZE/PRESSURE TABLE		
MAXIMUM FRAME LONG DIMENSION (IN.)	MAXIMUM FRAME SHORT DIMENSION (IN.)	ALLOWABLE PRESSURE (+/- PSF)
108	60	30
72	72	30
60	60	50
1. LONG DIMENSION MAY BE HORIZONTAL OR VERTICAL		

ALTERNATE ANCHOR/SUBSTRATE EVALUATION NOTE:

ALL ALTERNATE ANCHORS IN THEIR SPECIFIED SUBSTRATES HAVE BEEN ANALYZED IN ACCORDANCE WITH THEIR APPLICABLE STANDARD(S) AND ARE FOUND TO BE EQUIVALENT TO OR STRONGER THAN THE ANCHOR(S) USED IN TESTING WITH THIS PRODUCT.

THESE DRAWINGS ARE APPLICABLE ONLY TO THE PRODUCT SPECIFIED. THEY MAY NOT BE USED FOR THE ASSEMBLY AND/OR INSTALLATION OF ANY OTHER PRODUCT NOR MAY THEY BE USED FOR RATIONAL AND/OR LOCAL APPROVAL OF ANY PRODUCT NOT PRODUCED BY THE MANUFACTURER STATED ON THESE DRAWINGS.

DRAWN BY:
W.R.M.

CHECKED BY:
W.W.S.

DATE:
02/04/14

DATE:
02/04/14

PLT:
16

DATE:
02/04/14

DRAWING NO.
1866

REV.
1

SHEET NO.
1

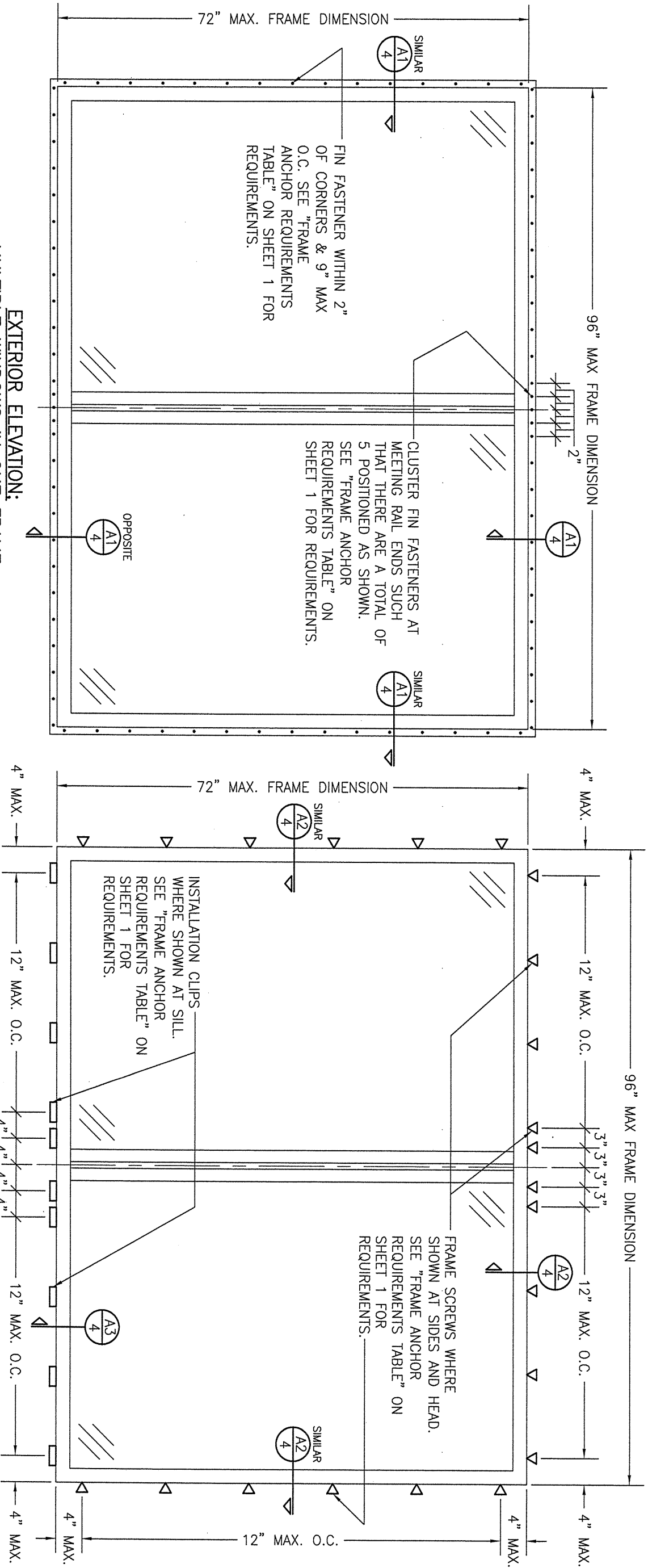
OF
4

CERTIFICATION
NOV 02 2020
WARREN W. SCHAEFER, P.E.
P.E. NO. 44135

DRAWING TITLE
250 SERIES VINYL FIXED DIRECT GLAZED NON-IMPACT WINDOW

CONSULTANTS
W. W. SCHAEFER ENGINEERING
& CONSULTING, P.A. (CA 6809)
7480 150TH COURT NORTH
PALM BEACH GARDENS, FL 33418
PHONE: 561-744-3424

MANUFACTURER
Pella Corporation
102 MAIN STREET
PELLA, IA 50219
641-621-1000



EXTERIOR ELEVATION:
MULTIPLE WINDOWS IN ONE FRAME
SCALE: 3/4" = 1'-0"
(NAIL FIN MOUNT CONDITION)

ALLOWABLE DESIGN PRESSURE
(MULTIPLE WINDOWS IN ONE FRAME)
+/-30 PSF

EXTERIOR ELEVATION:
MULTIPLE WINDOWS IN ONE FRAME
SCALE: 3/4" = 1'-0"
(FRAME SCREW AND CLIP MOUNT CONDITION)

MULTIPLE UNIT NOTES:

1. MULLION MAY BE HORIZONTAL OR VERTICAL PROVIDING UNIT SIZES ARE RESTRICTED AS SHOWN IN THIS ELEVATION.
2. IF VERTICALLY STACKED, THE MANUFACTURER &/OR INSTALLER SHALL INSURE THAT THE DEAD LOAD WEIGHT OF THE ABOVE WINDOWS CAN NOT CAUSE UNDO FAILURE TO THE BELOW WINDOWS.
3. THERE IS NO LIMIT ON THE NUMBER OF WINDOWS THAT MAY BE COMBINED IN ONE DIRECTION INTO ONE OPENING PROVIDING THE OPENING IS DESIGNED TO SUPPORT ALL LOADS TRANSFERRED FROM THE WINDOWS & THEIR MULLIONS.

NO.	REVISION	DESCRIPTION	BY	DATE

PELLA CORPORATION
102 MAIN STREET
PELLA, IA 50219
641-621-1000




CONSULTANTS
W. W. SCHAEFER ENGINEERING
& CONSULTING, P.A. (CA 6809)
7480 150TH COURT NORTH
PALM BEACH GARDENS, FL 33418
PHONE: 561-744-3424

CERTIFICATION
NOV 02 2020
WARREN W. SCHAEFER, P.E.
P.E. NO. 44135

DRAWING NO. 1866
SHEET NO. 3 OF 4

SECTION A1
SCALE: 3/4 FULL 4
(NAIL FIN MOUNT)

SECTION 
SCALE: 3/4 FULL
(FRAME SCREW MOUNT CONDITION)

ALTERNATE SECTION
SCALE: 1/2 FULL
A2
4
(FRAME SCREW MOUNT CONDITION WITH FLANGE)

SECTION A3
SCALE: 3/4 FULL 4
(INSTALLATION CLIP MOUNT CONDITION)

OPTIONAL DIRECT MOUNT DETAIL
TO SUBSTRATE WITH SPACER
(HEAD SECTION SHOWN; SIDES ARE INSTALLED THE SAME)
(DIRECT MOUNT CONDITION IS NOT APPLICABLE AT SILL)
(FOR DETAIL NOT SHOWN, SEE OTHER SECTIONS)

LENGTH = 3.000"
 ④ **FRAME FILLER**
 (RIGID PVC)
 (NOTE THAT WHEN
 JOB REQUIRED
 DESIGN PRESSURE
 IS OVER +/−30 A
 FRAME FILLER MUST
 BE USED AT EACH
 FRAME SCREW)

[illegible]

PELLA CORPORATION
102 MAIN STREET
PELLA, IA 50219
641-621-1000



DRAWING TITLE
250 SERIES VINYL FIXED

CONSULTANTS
**W. W. SCHAEFER ENGINEERING
& CONSULTING, P.A. (CA 6809)**
7480 150TH COURT NORTH
PALM BEACH GARDENS, FL 33418
PHONE: 561-744-3424

CERTIFICATION

NOV 02 2020
 W. SCHAEFER, P.E.
 P.E. NO. 44135