



- DESIGN CODES:  
2017 FLORIDA BUILDING CODE (FBC) - RESIDENTIAL  
ASCE 7-10, 2005  
NDS, ACI, ATC, AWPFA, APA, ICC 600-08
- OCCUPANCY: RESIDENTIAL GROUP R-3 (ONE- AND TWO-FAMILY DWELLINGS)

DESIGN LOADS:

FORMULA

1 SQUARE INCH FOR EVERY 300 SQUARE INCHES OF CEILING  
1.44 SQUARE INCHES = 1 SQUARE FOOT  
BUILDING CEILING (50 FT) X 1.44 = BUILDING (50 IN)  
BUILDING (50 IN) / 200 = 50 IN OF VENT REQUIRED  
50 IN OF VENT REQUIRED / 2 = 50% AT HIGH AND 50% AT LOW

SEE FDC SECTION 8306.2: 40% MIN, BUT NOT MORE THAN 5

BASE OF CALCULATION:

SQ IN OF VENT REQUIRED /2 = 50% AT HIGH AND 50% AT LOW  
PER FBC SECTION R906.2: 40% MIN, BUT NOT MORE THAN 50% OF  
VENTILATION MUST BE PROVIDED BY VENTILATORS LOCATED A  
MIN 3'-0" ABOVE EAVE

(b) SOFFIT VENTS - GP T3-1/3" FULL VENT PERFORATED W/ 9.19 SQ IN (NVA) PER LINEAL FT

CALCULATED LINEAL FOOT OF SOFFIT VENT SHALL NOT INCLUDE  
NON-VENTED FIRE RATED SOFFIT LOCATED LESS THAN 5' FROM  
PROPERTY LINE

AREA (SQ. FT.)	REQUIRED		PROVIDED		LOW (SQ. IN.)
	HIGH	LOW	VENTS (SQ. IN.)	LINEAL FT.	

HIGH: (1) & VENT = 216 SQ. IN.  
LOW: (1) LINEAL FT = 9.19 SQ. IN.

Double 5" perforated soffits have a 6.1/20 sq. inches/sq. foot rating

Triple 4" center vent soffit has a 1.9/35 sq. inches/sq. foot rating

Triple 4" full vent soffit has a 5.0/67 sq. inches/sq. foot rating

Triple 4" basketweave full vent has a 1.4/34 sq. inches/sq. foot rating

Triple 4" center vent has a 4.7/8 sq. inches/sq. foot rating

Beaded hidden vent soffit has 2.6/6 sq. inches/sq. foot rating

Triple 3.1/3" hidden vent soffit has a 9.1/9 sq. inches/sq. foot rating

7/16" O.S.B. NAILED WITH 8D 6"  
O.C. IN FIELD & 4" O.C. ON EDGES



Simpson Strong-Tie Co. Strong-Drive SDWC TRUSS Screws may be used for uplift connection in lieu of straps. Strong-Drive SDWC TRUSS Screws to be installed per manufacturer's specifications.

Simpson Strong-Tie Co. Titen HD Heavy-Duty Screw Anchors 5/8" x 8" maximum spacing of 42" o.c., may be used in lieu of 5/8"x10" anchor bolts with 3"x3"x1/8" washer. Titen HD Heavy-Duty Screw Anchors shall be installed per manufacturer's specifications.

- 4" O.C. GABLE END
- 6" O.C. EDGES (ALL ZONES)
- 6" O.C. INTERMEDIATE FRAMING (ZONE 3)
- 12" O.C. INTERMEDIATE FRAMING (ZONES 1 & 2)

SEE FIGURE R903.2.3.1, SECTION R903.1, 2017 FLORIDA BUILDING CODE - RESIDENTIAL, SIXTH EDITION FOR ROOF SHEATHING NAILING ZONES

ROOF PITCH LESS THAN 4/12 DBL. LAYER OF UNDERLAYMENT IS REQUIRED  
OVERLAP ROOFING UNDERLAYMENT 4"(MIN) OVER HIPPS AND RIDGES

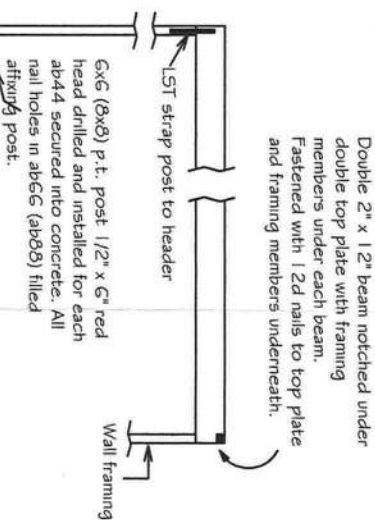
BUTTON CAP NAILS ARE USED TO FASTEN UNDERLAYMENT TO ROOF DECK WHEN SHINGLES NOT INSTALLED SAME DAY

DRIP EDGE INSTALLED OVER THE UNDERLAYMENT AT RAKES AND UNDER THE UNDERLAYMENT AT EAVES

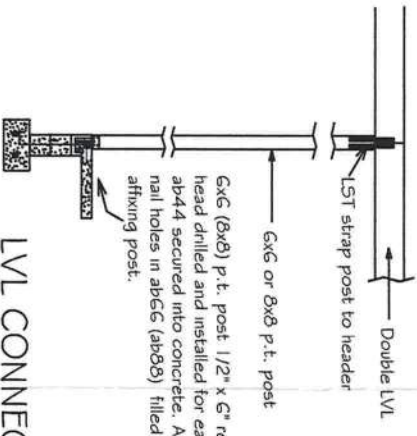
ALL ROOF PENETRATIONS ARE PROPERLY FLASHED W/ FLASHING OF THE  
CORRECT SIZE FOR THE PENETRATION

METAL ROOFING ATTACHED W/ CORRECT FASTENERS PER CODE AND MANUFACTURERS SPECS

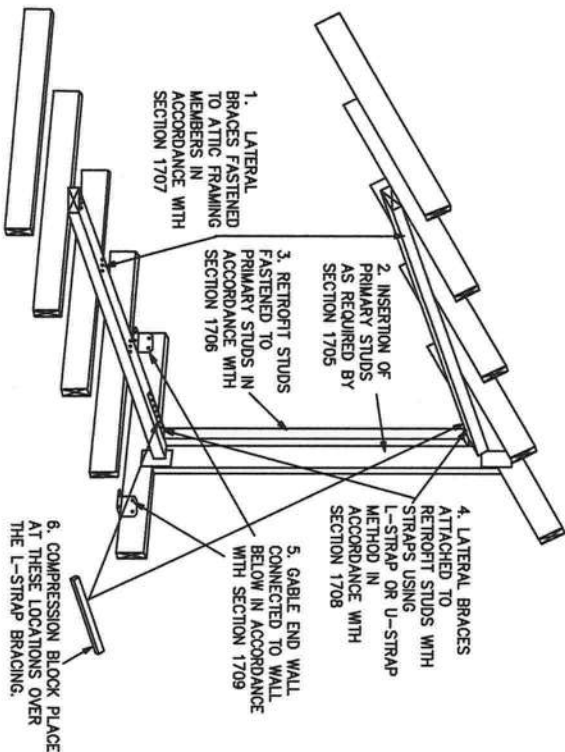
1" SPACE IS MAINTAINED BETWEEN THE END OF THE GUTTER AND THE WALL CLADDING



NOT TO SCALE

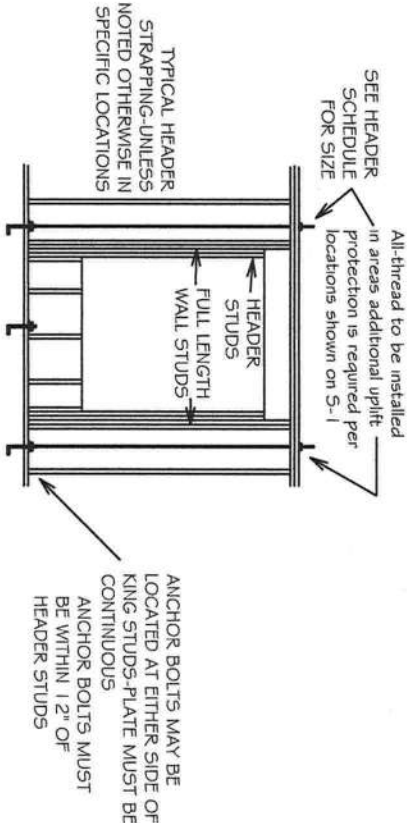


NOT TO SCALE



THIS FIGURE SHOWS A TRUSS GABLE END USING THE L-BENT STRAP METHOD. IN ORDER TO SHOW STRAPS, COMPRESSION BLOCKS ARE NOT SHOWN. THE METHODOLOGY FOR A CONVENTIONALLY FRAMED GABLE END IS SIMILAR. NOT ALL DETAILS ARE SHOWN.

NOT TO SCALE



NOT TO SCALE

$$\text{UP/LIFT CONNECTIONS REQUIRED AT POINT "A" (TOP \& BOTTOM OF CRIPPLES)} = \frac{\text{UP/LIFT LOAD PER FRAMING MEMBER ABOVE THE HEADER}}{\text{MULTIPLIED BY THE NUMBER OF FRAMING MEMBERS DIVIDED BY TWO}}$$


Carol Chadwick, PE  
cn=Carol Chadwick, PE, o=This Item  
has been electronically signed and  
sealed by Carol Chadwick, PE using a  
digital signature, ou,  
email=crcpewyo@gmail.com, c=US  
2020.06.23 16:06:45 -04'00'