

**LIMITATIONS OF USE:**

THE DRAWINGS CONTAINED WITHIN THIS SET OF DOCUMENTS ARE INTENDED FOR THE ONE TIME USE IN REFERENCE TO THE PROJECT LISTED ABOVE ONLY. ANY UNAUTHORIZED COPYING OF OR UTILIZATION OF THE DOCUMENTS OR ANY PART WITHIN IS COPYRIGHT INFRINGEMENT OF INTELLECTUAL PROPERTY.

**LIABILITY DISCLAIMER:**

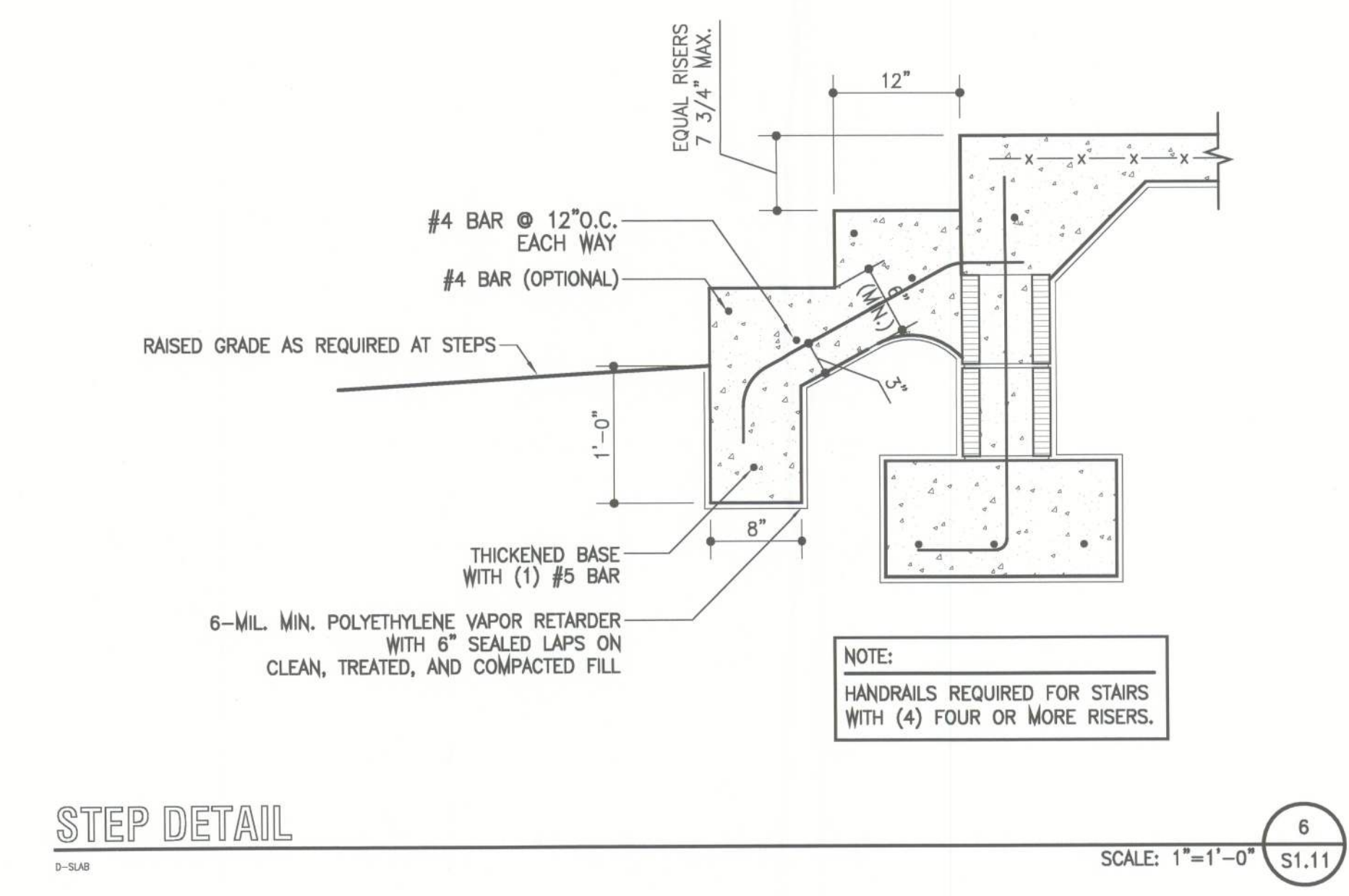
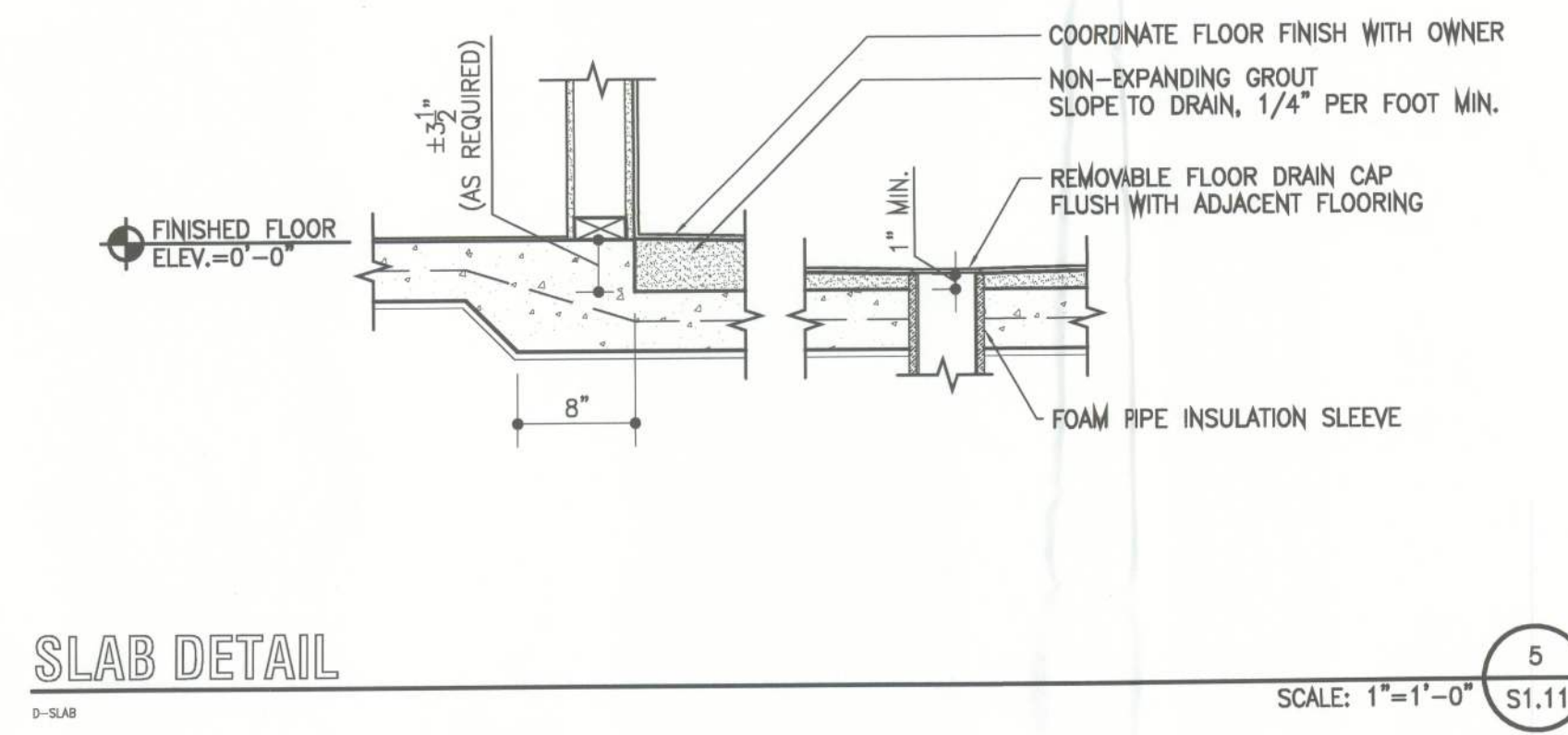
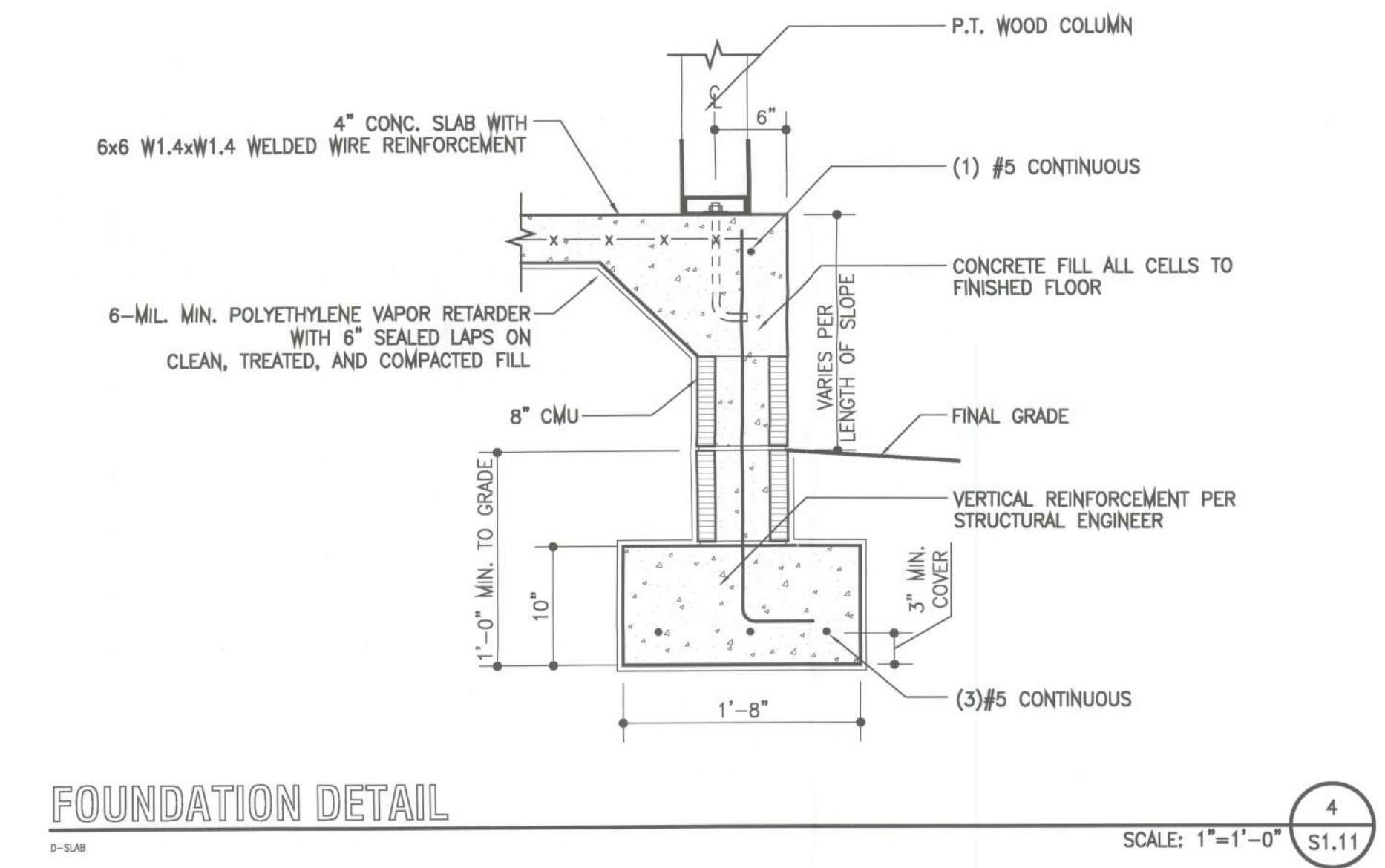
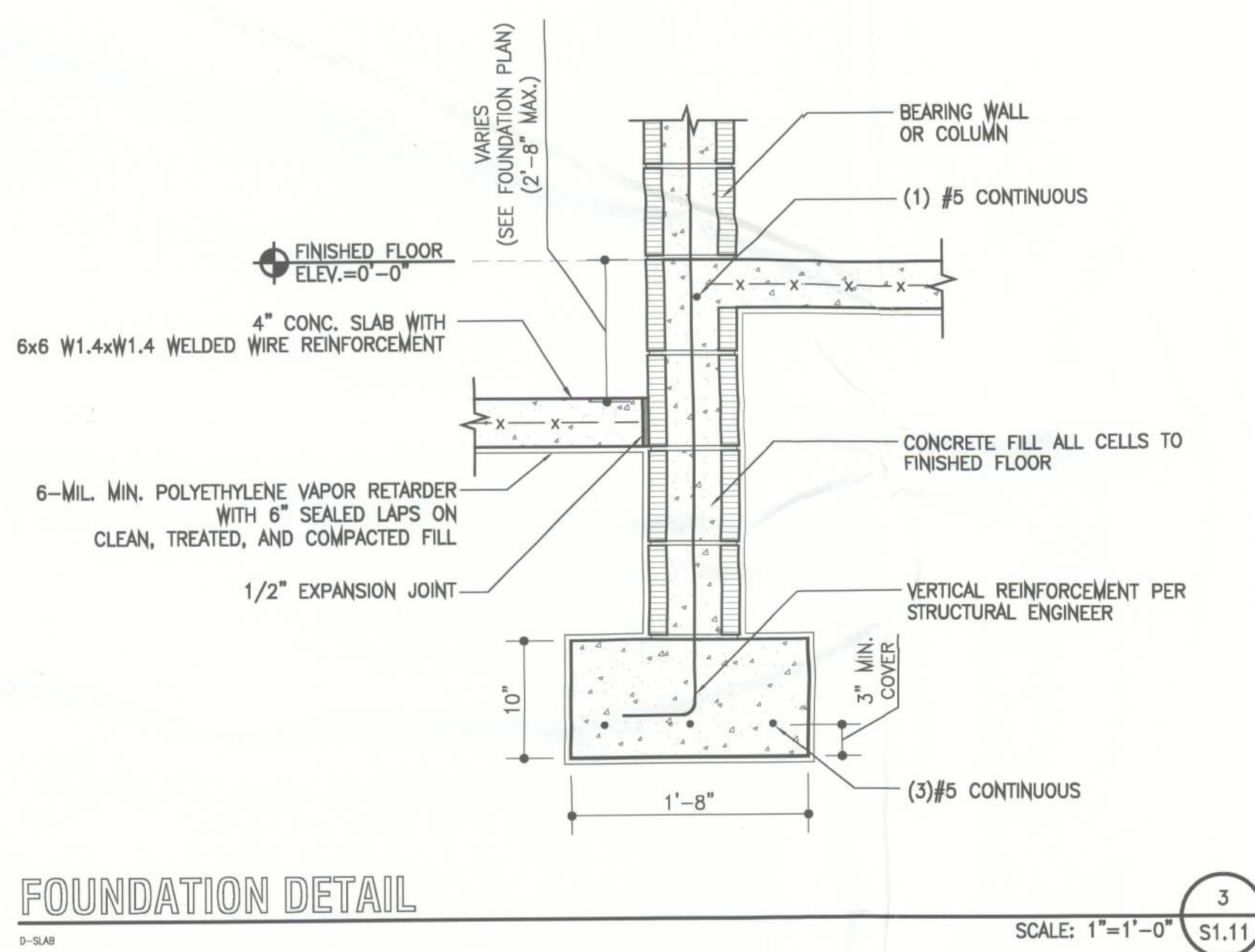
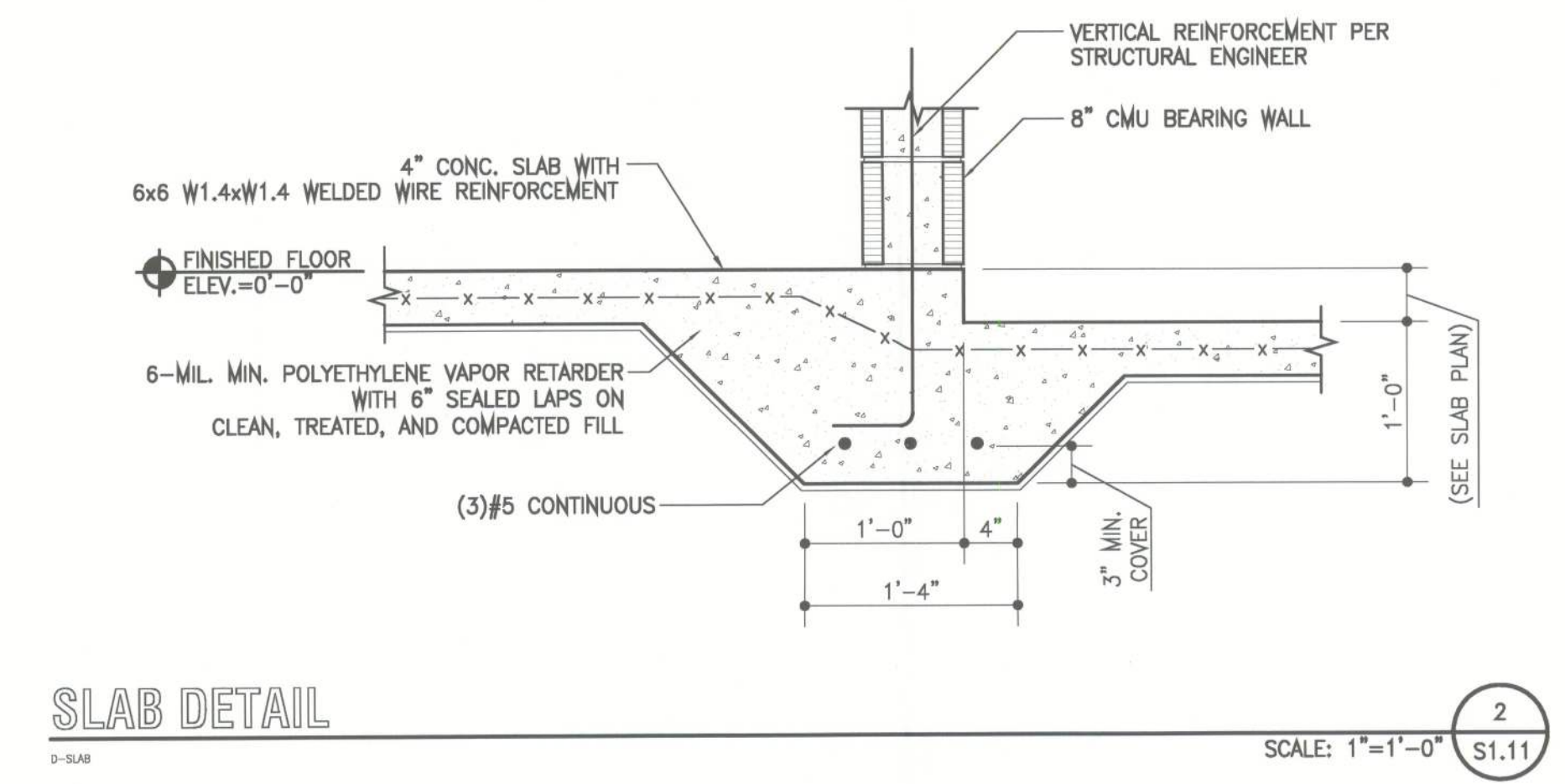
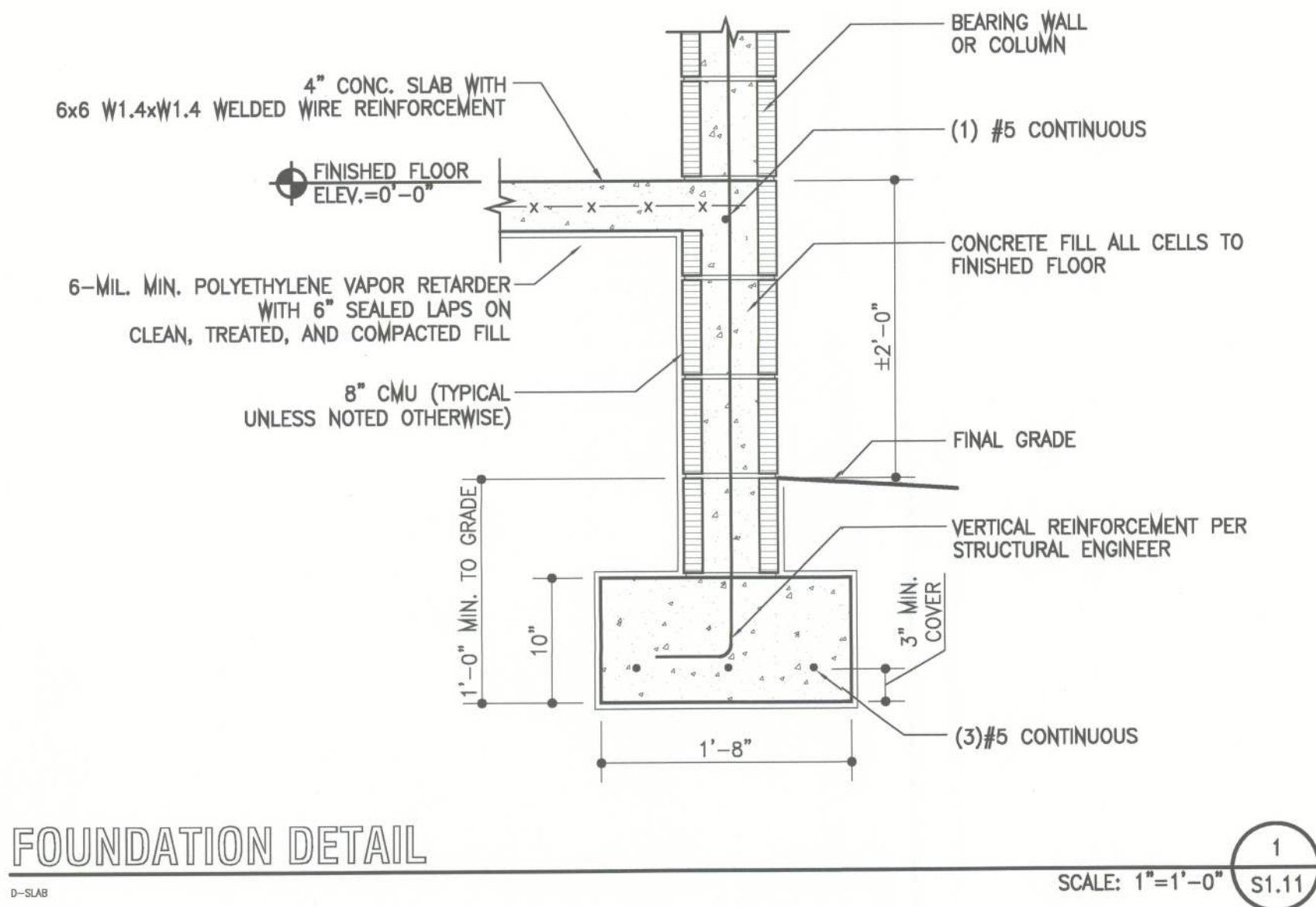
THE DRAWINGS CONTAINED WITHIN THIS SET OF DOCUMENTS ARE INTENDED FOR CONTRACTOR'S STANDARD CONSTRUCTION. W.E.B. DESIGNS IS RESPONSIBLE ONLY FOR THE ACCURATE REPRESENTATION, COORDINATION, AND DEPICTION OF THE GENERAL DESIGN. THE CONTRACTOR IS RESPONSIBLE AND LIABLE FOR THE SELECTION OF BOTH MATERIALS AND METHODS OF CONSTRUCTION IN REGARDS TO BUT NOT LIMITED TO THERMAL AND MOISTURE PROTECTION, PROPER APPLICATION AND INSTALLATION OF PRODUCTS ACCORDING TO MANUFACTURER'S RECOMMENDATIONS, AND THE UTILIZATION AND IMPLEMENTATION OF INDUSTRY STANDARDS. THE CONTRACTOR IS ALSO RESPONSIBLE FOR FIELD VERIFICATION OF ALL DIMENSIONS OF PREEXISTING CONSTRUCTION PRIOR TO THE FABRICATION OR COMMENCEMENT OF ANY NEW WORK. ACCEPTANCE BY CONTRACTOR OF THESE DRAWINGS FOR CONSTRUCTION IS ACKNOWLEDGMENT TO AND AGREEMENT WITH THESE TERMS AND CONDITIONS.

**CONSTRUCTION  
 DOCUMENTS FOR  
 CONTRACTOR'S  
 STANDARD  
 CONSTRUCTION**

PROJECT NO.: 11017  
 DATE: AUGUST 29, 2011  
 REVISION DATES: .

**FOUNDATION DETAILS**

**\$1.11**  
 COPYRIGHT ©



**NOTES:**

- STRUCTURAL REVIEWED AND CORRECTIONS BY:  
 W.S.E. WAYLAND STRUCTURAL ENGINEERING
- SEE STRUCTURAL ENGINEERING PACKAGE BY WSE WAYLAND STRUCTURAL ENGINEERING FOR ADDITIONAL INFORMATION.
- WIND LOAD ANALYSIS AND ENGINEER'S MARKUPS AND DRAWINGS SUPERSEDE.
- SITE WORK SHALL COMPLY WITH SOIL REPORT PREPARED BY OTHERS.