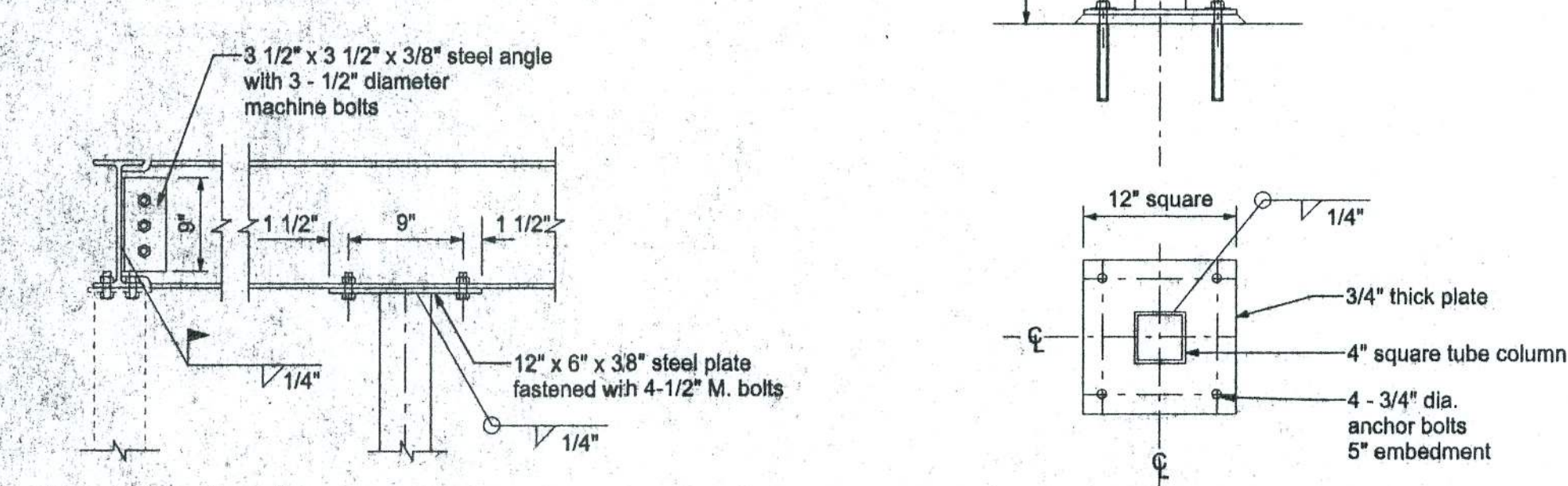
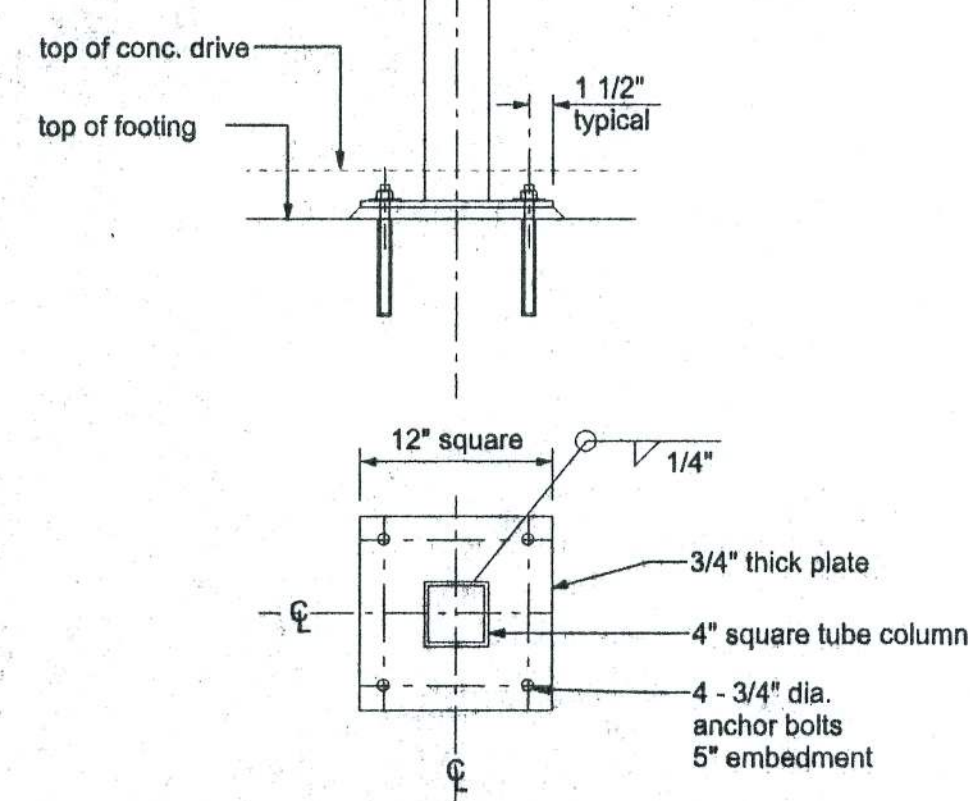


1 BEAM/COLUMN CONNECTION
SCALE: 3/4" = 1'-0"

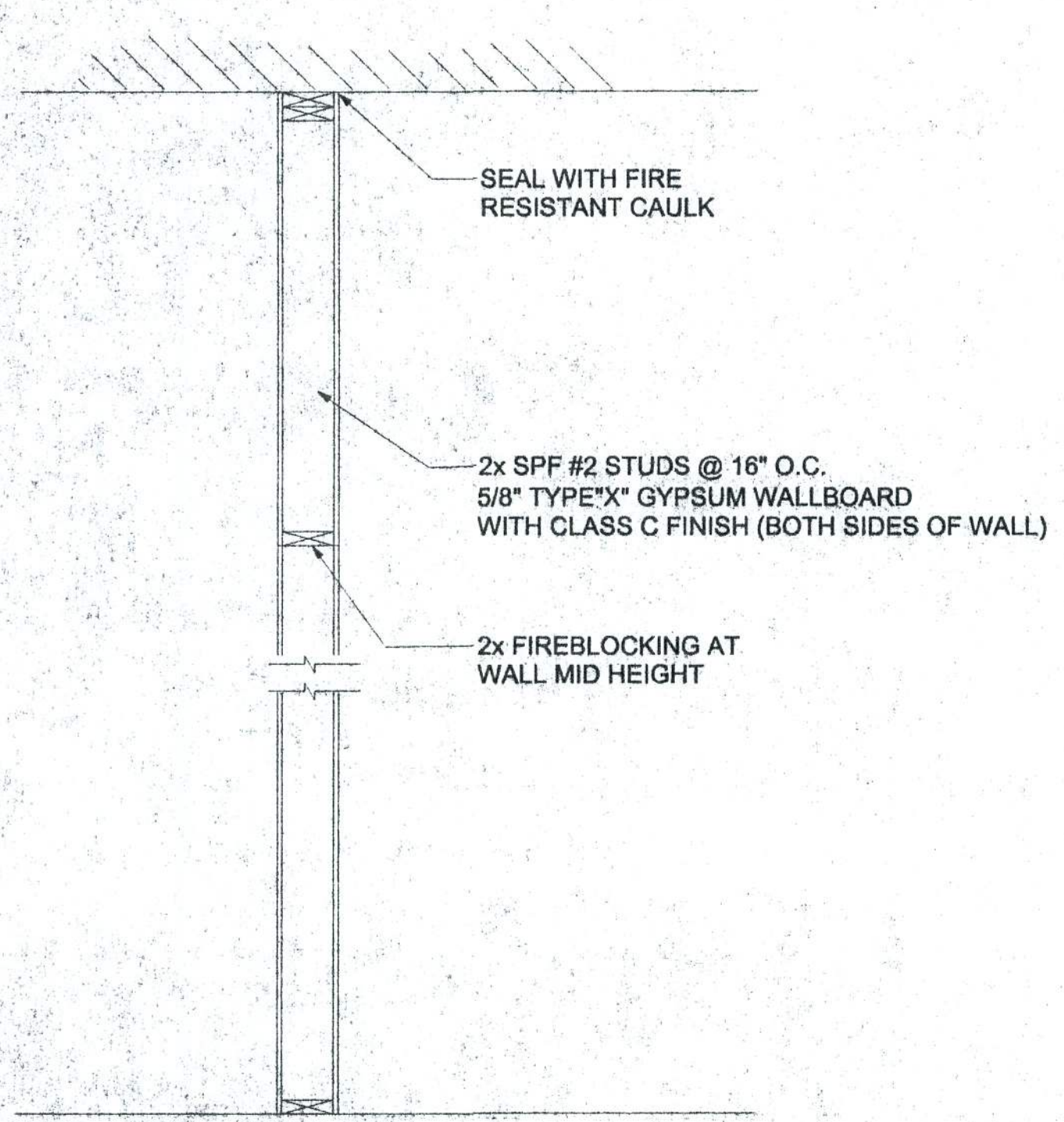


2 BEAM/COLUMN CONNECTION
SCALE: 3/4" = 1'-0"



3 PLAN VIEW AND ELEVATION
SCALE: 3/4" = 1'-0"

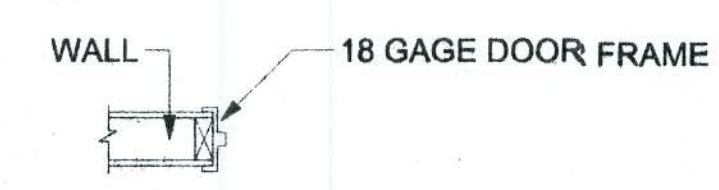
STEEL BEAM AND COLUMN DETAILS



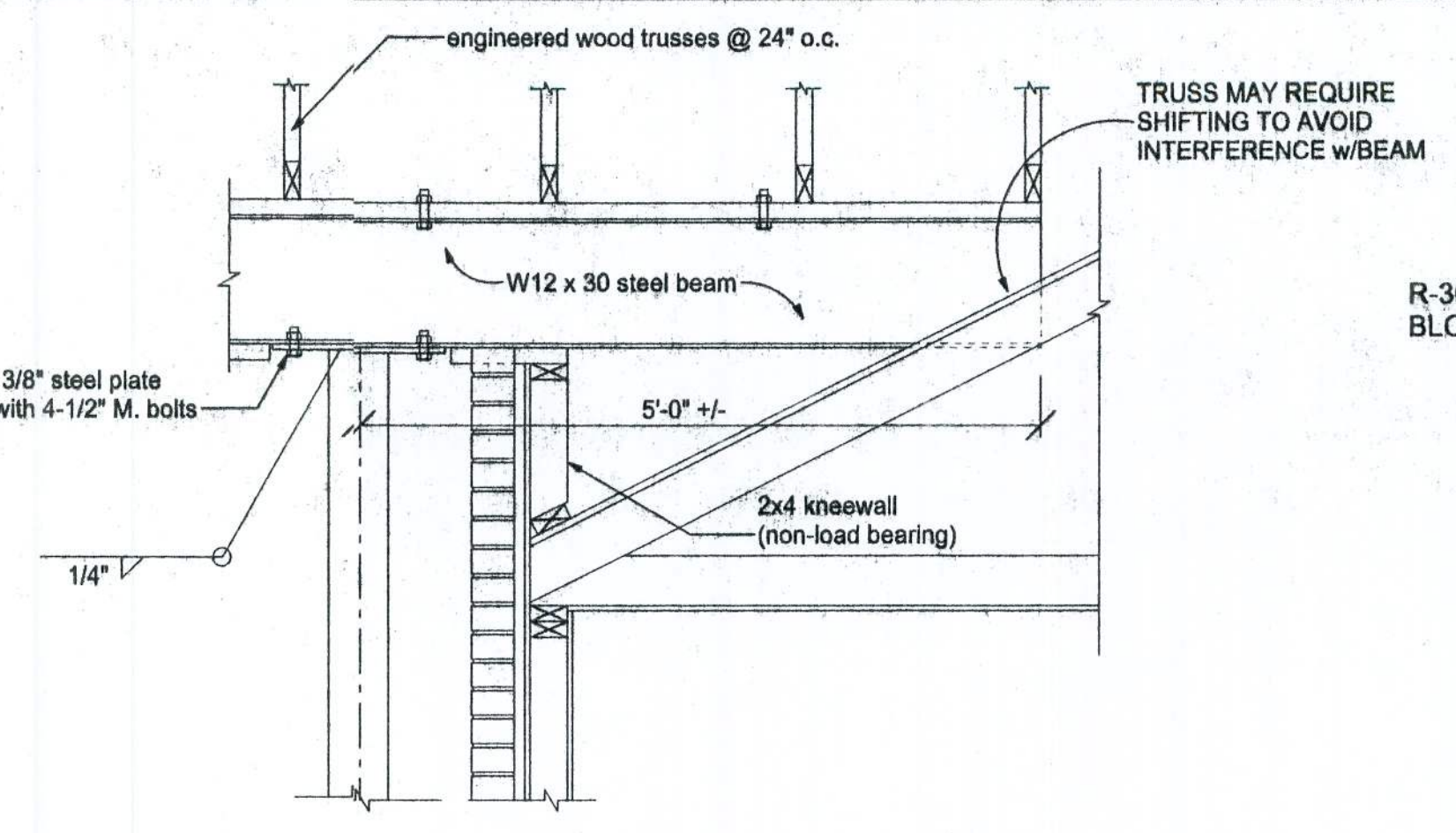
CORRIDOR WALL SECTION
SCALE: 3/4" = 1'-0"

WALL FIRE RATING PER SIDE	
MATERIAL	FIRE RESISTANCE (MIN.)
5/8" TYPE "X" DRYWALL	40
2"x4" STUDS @ 16" O.C.	20
TOTAL	60

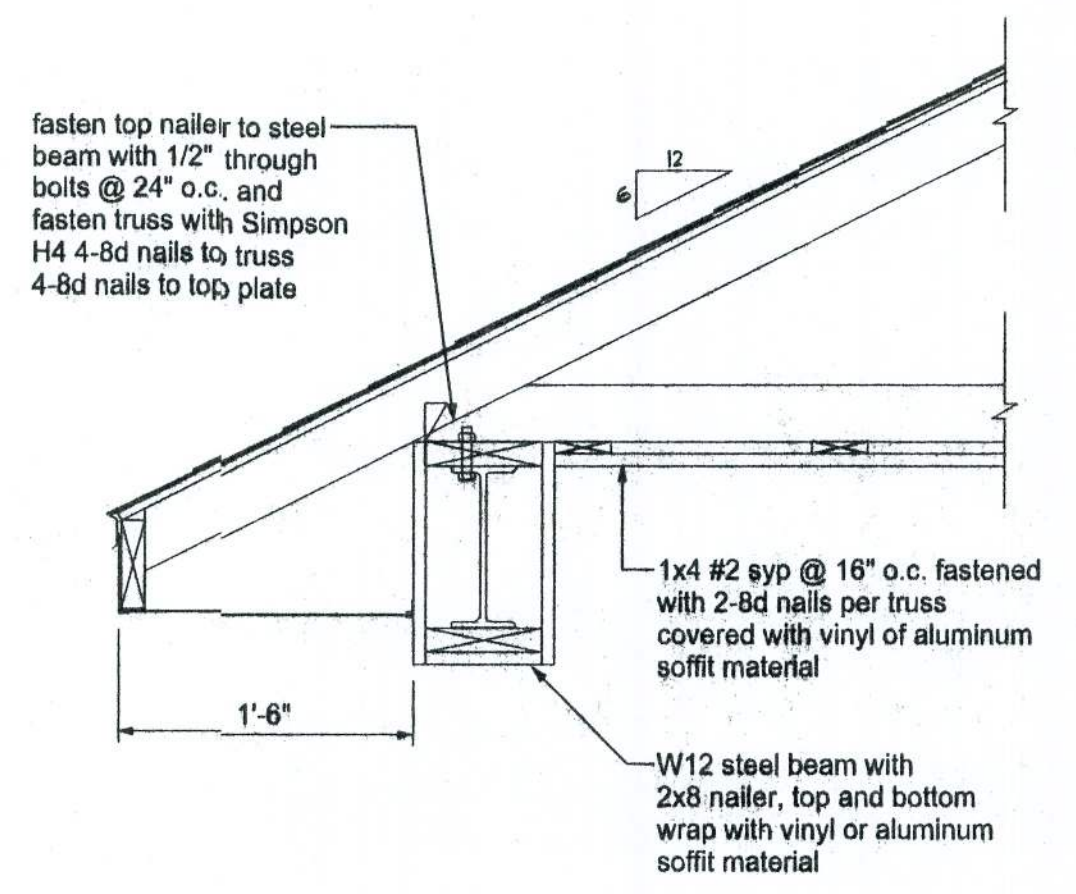
4 5/8" JAMBS ON ALL INTERIOR 2x4 WALLS
9" JAMBS ON EXTERIOR BRICK 2x4 WALLS



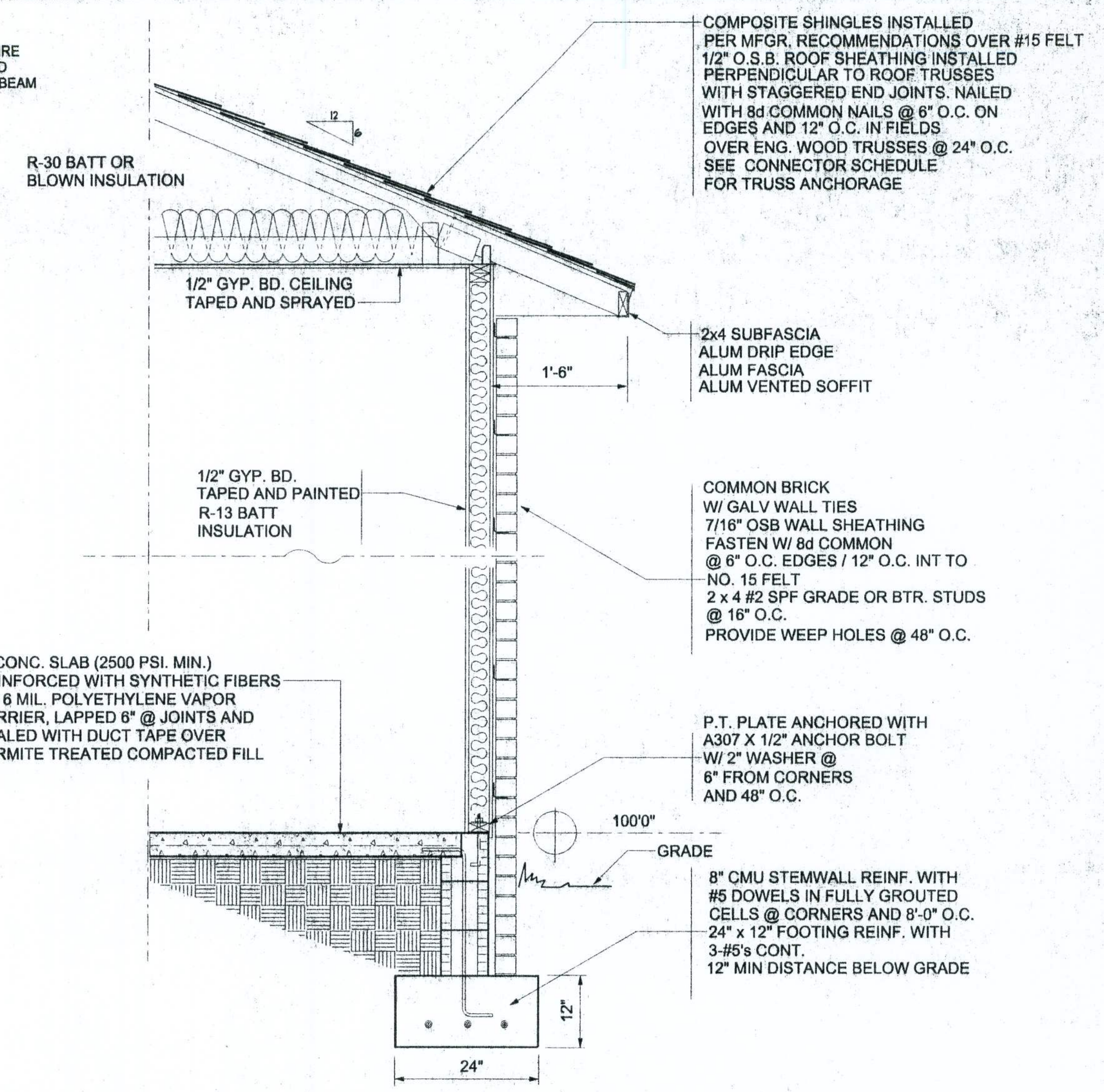
INTERIOR JAMB DETAIL
KNOCKDOWN METAL FRAME WITH PRIMED FINISH
WRAP AROUND STYLE



A SECTION @ PORTE-CO/WALL CONNECTION
SCALE: 3/4" = 1'-0"



B PORTE-CO SECTION
SCALE: 3/4" = 1'-0"



TYPICAL WALL SECTION
3/4" = 1'-0"

STEEL COATING RECOMMENDATIONS IN PRESSURE TREATED WOOD:

- Thicker galvanizing generally extends service life of a product. The treated wood industry recommends use of Stainless Steel and hot-dip galvanized connectors and fasteners with treated wood.
- Due to the uncertainties, which are out of the specifiers control, in regard to the chemicals used in pressure treated wood, Simpson recommends the use of stainless steel fasteners, anchors and connectors with treated wood when possible. At a minimum, customers should use ZMAX (G185 HDG per ASTM A653), Batch/Post Hot-Dip Galvanized (per ASTM A123 for connectors and ASTM A153 for fasteners), or mechanically galvanized fasteners (per ASTM B695, Class 55 or greater), product with the newer alternative treated woods.
- G60 galvanized products should not be used with treated woods.
- G90 galvanized connectors can be used with Sodium Borate (DOT - Disodium Octaborate Tetrahydrate) treated woods.
- Sodium Borate Treated woods are not suitable for applications where moisture exposure is likely. They are suitable for mudsill applications when transported, stored, and installed appropriately.
- When using stainless steel or hot-dip galvanized connectors, the connectors and fasteners should be made of the same material.

Simpson Strong-Tie Product Finishes	Untreated Wood	Chromated Copper Arsenate (CCA-C)	DOT Sodium Borate (SBX)	Alkaline Copper Quat ACQ-C and ACQ-D (Carbonate)	Copper Azole (CBA-A and CA-B)	SBX (DOT) with NASIO 2	Ammoniacal Copper Zinc Arsenate (ACZA)	Other Pressure Treated Woods
Standard (G90)	X	X	X					
ZMAX (G185)	X	X	X	X	X	X		
Post Hot-Dip Galvanized (HDG)	X	X	X	X	X	X	X	X
SST300 (Stainless Steel)	X	X	X	X	X	X	X	X

161 N.W. MADISON STREET
SUITE #102
LAKE CITY, FL 32055
(386) 758-4209

Freeman Design Group Inc.

DATE 6/22/04
DRAWN BY W.H.F.

REVISIONS

SHEET A-8

OF 12

PROJECT NO.

DR. GIEBEIG OFFICE

W.H.F. 9/2/04