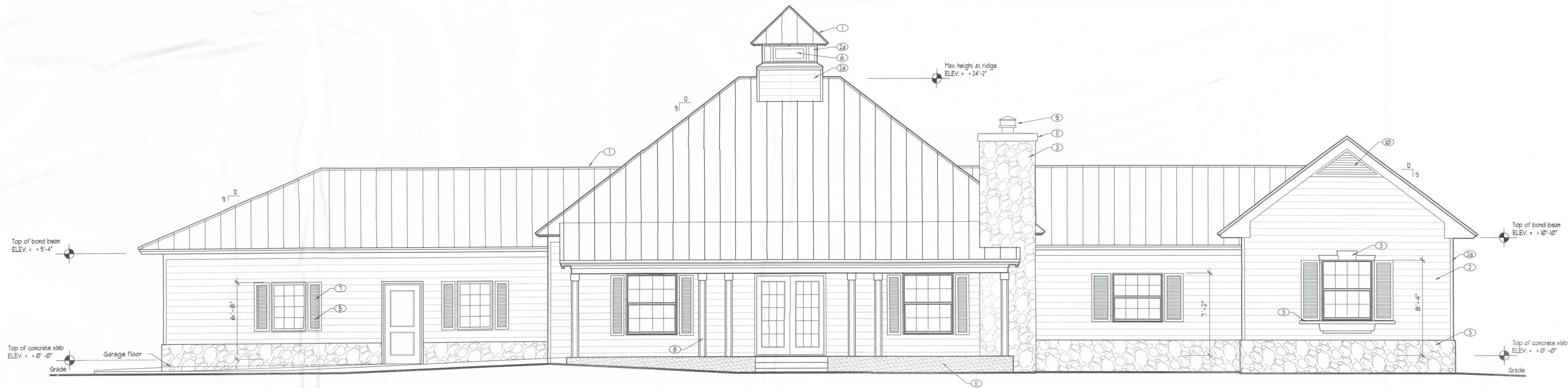


WEST  
FRONT ELEVATION  
scale: 1/4" = 1'-0"



EAST  
REAR ELEVATION  
scale: 1/4" = 1'-0"

### ELEVATION KEY NOTES

- ① Metal roof: Standing seam, 16 1/2" spacing. Finish color to be selected.
- ② HardiePlank fiber-cement siding, 8 1/2" width. Color to be selected.
- ②a HardiePlank fiber-cement trim. Color to be selected.
- ③ Artificial stone veneer, 2" thickness. Colors and pattern to be selected.
- ④ Aluminum single hung window, ESP white finish/clear glass.
- ⑤ Aluminum project-out window, ESP white finish/clear glass.
- ⑥ Timberlane shutters, synthetic "Endurian" material. Style/finish to be selected.
- ⑦ Wood cladding over steel columns. See details.
- ⑧ Metal chimney cap.
- ⑨ False louver. Paint all visible surfaces behind in flat black.
- ⑩ Stucco finish (Portland cement plaster)
- ⑪ Exposed wood beams, stained finish.



Florida Licenses: AR0008515 / AA26001883  
5794 Bird Road, # 225 Miami, Florida 33155  
Tel 305.665.5500 / Fax 305.665.5800

seal:

John R. Porfiri  
12-27-11

consultants:

Copyright notice:  
All graphic and written material appearing herein are instruments of the Architect's service for use on this project, and are protected under the Architectural Works Copyright Protection Act of 1990. The material may not be duplicated, used, repeated or disclosed without the prior written consent of John R. Porfiri, Architect. © 2011 John R. Porfiri, Porfiri Architecture & Consulting, LLC

New Residence for  
**Mr. & Mrs. Wade Schile**  
319 Singleton Terrace, Columbia County, Florida

Date: July 14, 2011

Project no.  
Drawn: JRFP  
Checked: JRFP  
Revisions:

Sheet title:

ELEVATIONS

Sheet no.

A200