

SUPPLEMENTAL NOTES:

METAL PLATES, CONNECTORS, SCREWS, & AND NAILS EXPOSED DIRECTLY TO WEATHER OR SUB TO SALT CORROSION IN COASTAL AREAS SHALL BE DIPPED GALVANIZED AFTER THE FASTENER OR CONNECTOR IS FABRICATED TO FORM A ZINC COATING LESS THAN 1 OUNCE PER SQUARE FOOT OR, HOT DIP GALVANIZED COATED WITH A MINIMUM OF 1.8 OUNCE PER SQUARE FOOT OF STEEL.

ALL CUT ENDS, NOTCHES AND DRILLED Holes OF PRESERVATIVE-TREATED WOOD SHALL BE TREATED ACCORDANCE WITH AWPA M4.

FLOOR EDGE JOIST

MINIMUM 5"x6" 20 GA STEEL METAL CONNECTOR ON EACH SIDE OF EDGE JOIST CENTERED ON BUTT JOINT

FLOOR EDGE JOIST BUTT JOINT SPLICE DETAIL

19/32" Plywood sheathing perpendicular to joists w/next row staggered @ MIN 2'-8" (SturdiFloor, EXP1" O.C.) T&G edges fastened w/100% PVA glue and .120" x 1/2" nails 6" O.C. edges and field.

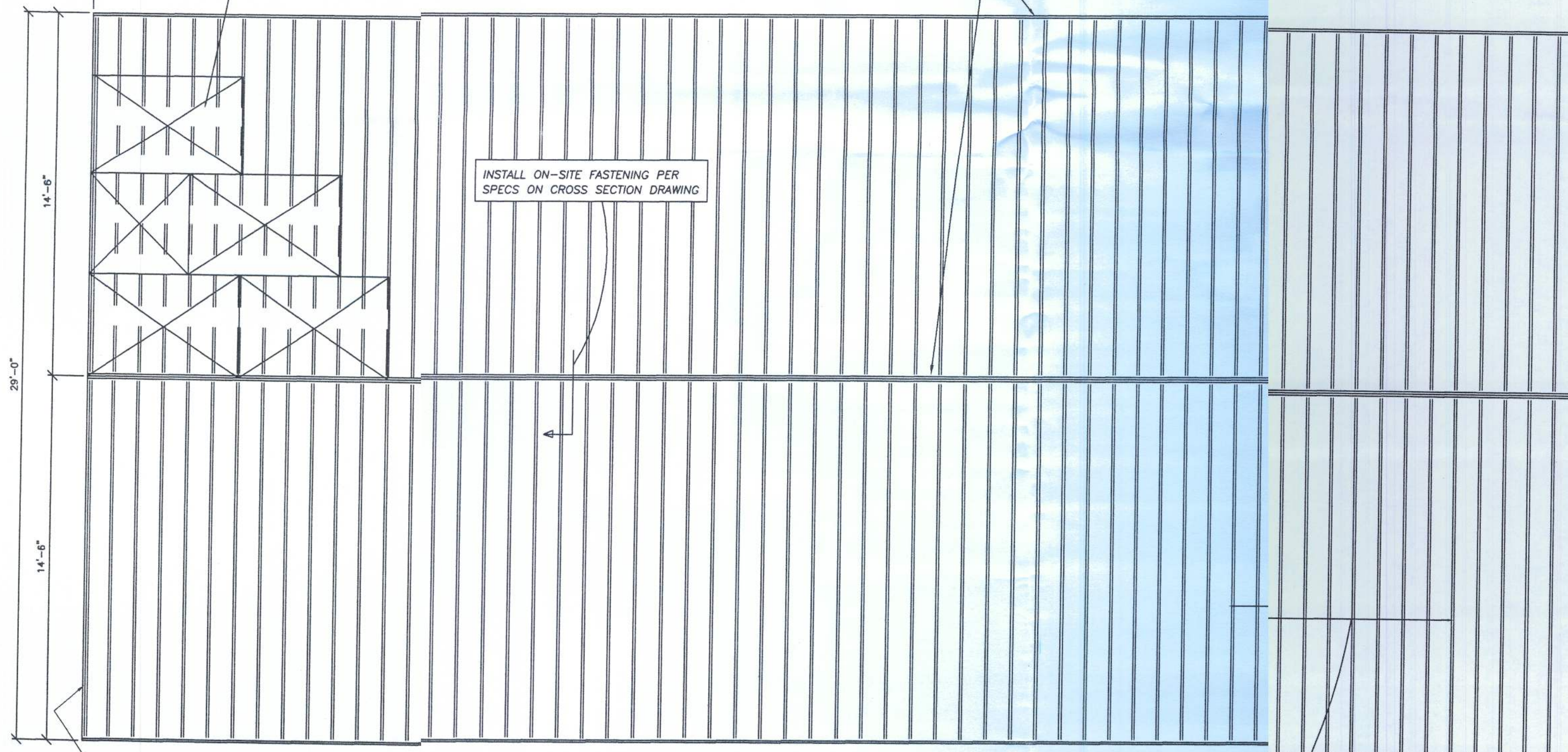
OR

19/32" OSB sheathing perpendicular to joists w/next row staggered @ MIN 2'-8" (SturdiFloor, EXP1" O.C.) T&G edges fastened w/100% PVA glue and .120" x 1/2" nails 6" O.C. edges and field.

76'-0"

SINGLE 2x8 SYP #2 EDGE JOIST FASTEN EACH EDGE JOIST TO EACH TRANSVERSE JOIST W/7-131"x3" NAILS. (TYP. SIDEWALL AND MATELINE EACH HALF)

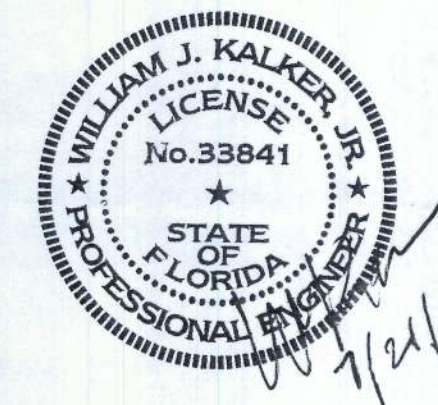
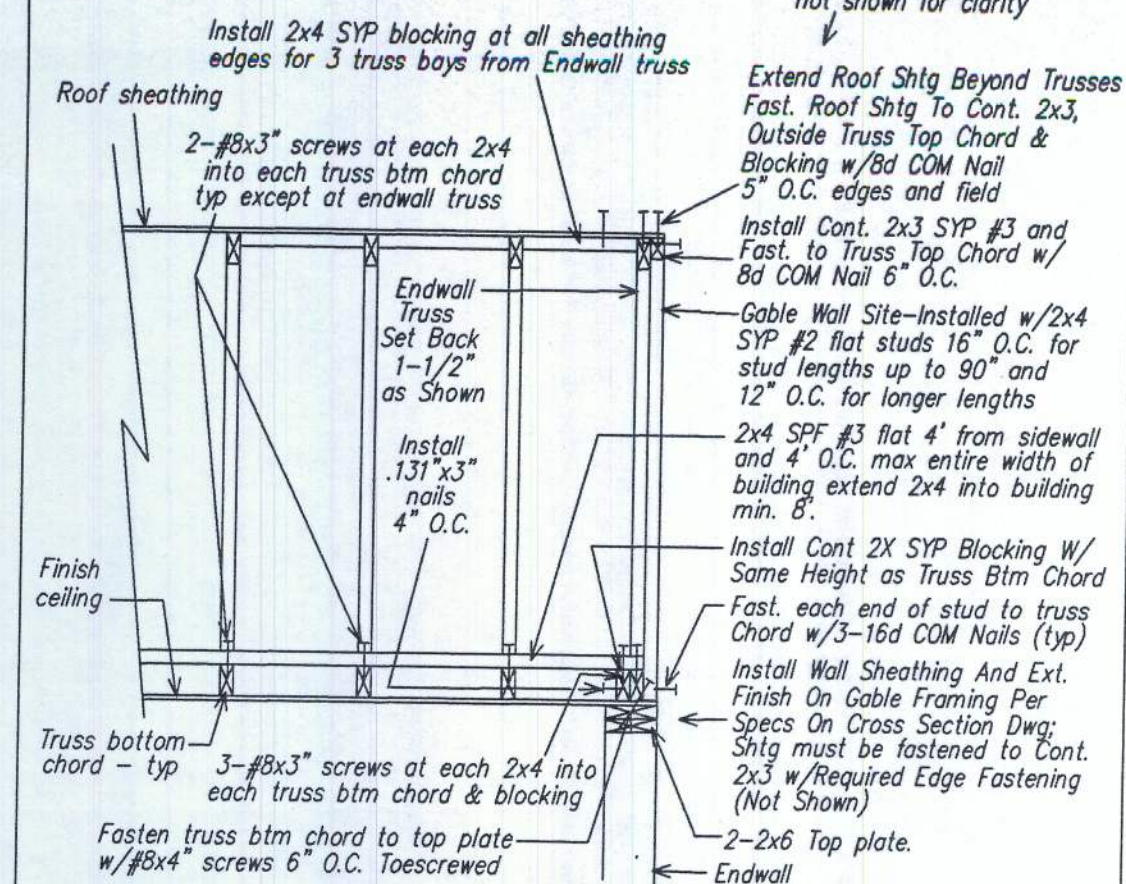
INSTALL ON-SITE FASTENING PER SPECS ON CROSS SECTION DRAWING



NOTE: THE FOUNDATION DESIGNER MUST ADJUST THE FLOOR FRAM DIMENSIONS SPECIFIED ABOVE TO ACCOMMODATE FOR THE NOT GAPS WHICH OCCUR BETWEEN THE MODULES DURING SETUP.

FRONT TYPICAL FLOOR FRAMING PLAN W/STEEL FRAME

ENDWALL BRACING CONSTRUCTION



SINGLE 2x8 SYP #2 JOIST UNDER THIS ENDWALL INSTALLED OVER A FULL DEPTH STEEL CROSSMEMBER FASTENED TO JOIST WITH 5- 3MMX3" FASTEC FRAMELOC LAG SCREWS PER THE APPROVED STRUCTURAL PACKAGE

LISTING AGENCY APPROVAL

These prints comply with the Florida Manufactured Building Act of 1970 Construction Code and adhere to the following criteria:

Cons. Type: U-B
Occupancy: R-3
Allowable No. of Floors: 1
Wind Velocity: 130 (3Sec)
Fire Rating of Ext. Walls: 0
Plan No.: 298-B/L1F
Allow. Floor Load: 40
Approval Date: 7/26/11
Manufacturer: TOWN HOMES
Approved for High Velocity Hurricane Zone: No

HWC
COA # 1025

TOWN HOMES LLC

P.O. BOX 1059
LAKE CITY, FLORIDA 32056

DATE: 07/08/11

CODES: FBC

LABELS: FL

SCALE: NTS

MODEL: 2944-1083

FLOOR FRAMING W/STEEL FRAME

WILLIAM J. KALKER, JR., P.E.

CONSULTING ENGINEER
P.E. LICENSE #33841

PLAN NO.

TH-70FL

33 ROCKWOOD LANE
MONROE, CT 06468
(203) 261-1167

SHEET

4 OF 6

DRAWN BY: C.A. Leblanc