



E S/F EXTERIOR CABINET
Scale: 1/2" = 1'-0"

SCOPE OF WORK:

MANUFACTURE AND INSTALL (1) ONE INTERNALLY ILLUMINATED POLYCARBONATE FACE
EXTRUDED CABINET FOR FASCIA

CABINET : S/F EXTRUDED BODY ON TOP & BOTTOM

2 PART S/F EXTRUDED BODY WITH RETAINER ON THE ENDS
DIVIDER BARS : 1 1/2" DIVIDER BARS

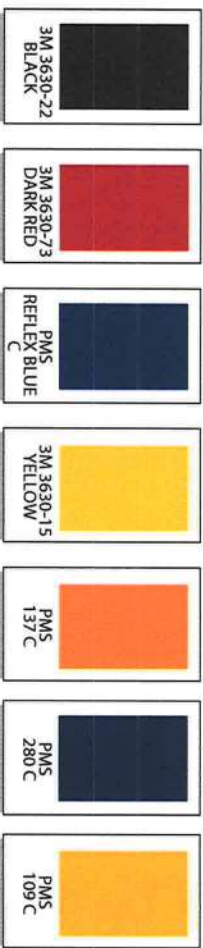
FACE : .177" WHITE POLYCARBONATE FACES WITH 1ST SURFACE VINYL GRAPHICS.

GRAPHICS : APPLIED FIRST SURFACE VINYL & DIGITAL PRINTS

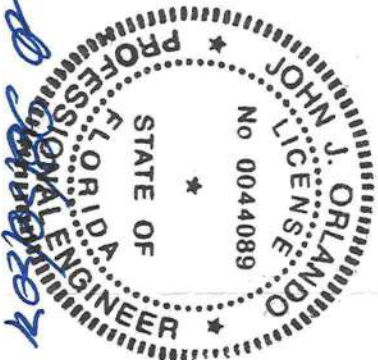
PAINT : CABINET PTM MATTHEWS BLACK SATIN FINISH

ILLUMINATION :WHITE LED'S & POWER SUPPLIES AS REQUIRED FOR PROPER ILLUMINATION,
ATTACHMENT :FLUSH MOUNT CABINET TO EXISTING FASCIA, HARDWARE TBD ON SITE DUE
TO WALL CONDITIONS (3/8" DIA. MIN.)

8 EVENLY SPACED PLACES, PRECISE FASTENER LOCATIONS BY INSTALLERS



UNDERWRITERS
LABORATORIES
LISTED
ELECTRIC SIGN



FASTENER SCHEDULE		
	3/8" LAG SCREW	FOR USE WITH WOOD OR EIFS WALL SYSTEMS. 1-1/2" MIN PENETRATIONS (EXCL. TIP)
	3/8" SNAP TOGGLE	FOR USE WITH WOOD OR STUCCO WALL SYSTEMS. 1-1/2" MIN PENETRATIONS (EXCL. TIP)
	3/8" LAG & SHIELD	FOR USE WITH WOOD OR EIFS WALL SYSTEMS. 1-1/2" MIN PENETRATIONS (EXCL. TIP)
	3/8" DIA. THREADED ROD & BEARING PLATES	FOR USE WITH WOOD, CONCRETE BLOCK OR EIFS WALL SYSTEMS
	3/8" DIA. THREADED ROD	FOR USE WITH WOOD, CONCRETE BLOCK OR EIFS WALL SYSTEMS
	3/8" RED HEAD L.D.T. (LARGE DIAMETER TAPCON)	FOR USE WITH CONCRETE BLOCK, BRICK OR CONCRETE. EMBED A MIN. OF 2 1/2"
	3/8" DIA. HILTI HIT ROD WITH HY150 MAX ADHESIVE	FOR USE WITH CONCRETE, EMBED A MIN. OF 2"
	3/8" DIA. HILTI HIT ROD WITH HY20 ADHESIVE	FOR USE WITH MASONRY/AND BRICK EMBED A MIN. OF 3 3/8"
	3/8" DIA. HILTI HIT ROD WITH HY20 ADHESIVE	FOR USE WITH CONCRETE BLOCK, EMBED A MIN. OF 2"
	3/8" DIA. HILTI HLC SLEEVE ANCHOR	FOR USE WITH CONCRETE, MASONRY AND BRICK EMBED A MIN. OF 3 3/8"

18038 NW 246th ST.
High Springs, FL, 32643
Phone 386-201-0819
Fax 386-201-0820
www.dowling-signs.com



18038 NW 246th ST.
High Springs, FL, 32643
Phone 386-201-0819
Fax 386-201-0820
www.dowling signs.com

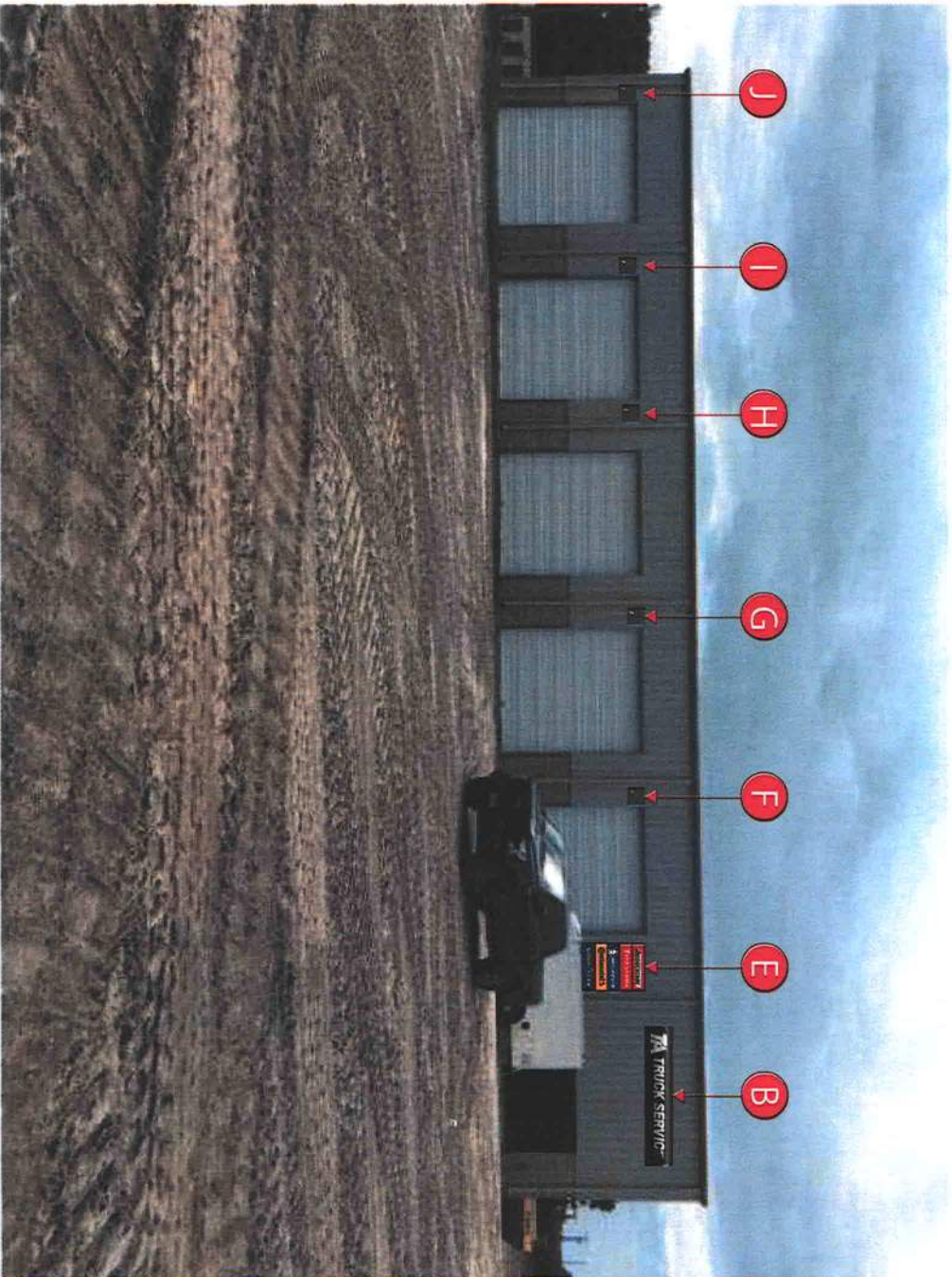



PHOTO SURVEY OF PROPOSED (ENTRANCE)
Scale: Not to Scale



18038 NW 246th ST.
 High Springs, FL, 32643
 Phone 386-201-0819
 Fax 386-201-0820
www.dowlingsigns.com



PHOTO SURVEY OF EXISTING
Scale: Not to Scale



PHOTO SURVEY OF PROPOSED (ENTRANCE)
Scale: Not to Scale



Job name TA Truck Service (sign E)
Job# 3621DS
Sign company: Dowling Signs
Installation location: I-75 and HWY-41, Lake City, FL 32025

Section 3107 and 1609 of Florida Building Code 2020 and Chapter 30 ASCE 7-16 applies.
Application of wind pressures using the alternative all heights method for components and cladding

Type of structure: wall mounted lighted cabinet sign

Occupancy Category: II

Wind velocity (3 sec gust), FBC 2020, section 1609.3: 130 mph

Wind pressure (qz) 43.3 psf

Net Pressure Coefficient (Cnet) from Figure 30.7-2

Components and cladding not in areas of discontinuity - walls and parapets -1.09
Wind Pressure -47.2 psf

Wind load applied between wall and structure, pulling structure away from wall
Load carried by tension in fasteners connecting structure to wall

- maximum height of structure to be attached	6.77 ft
- maximum width of structure to be attached	5.00 ft
- effective projected area factor	1.00
- projected area of each component to be attached	33.9 ft ²
- wind load	-1598 lbs
- allowable tension load per fastener to	250 lbs
- even number of fasteners minimum of 2 =	-8
- number of fasteners practically required due to structure shape	8
- weight of structure is approximately	135 lbs
- allowable shear load per fastener to	125 lbs
- average shear load per fastener =	16.9 lbs

References:

ASCE 7-16
The 7th Edition (2020) of the Florida Building Code

sheet: 3 of 3



John J. Orlando PE LLC 0044089
165 Old Ridge Road
Macon, GA 31211
(478) 731-5394
jjorlando@cox.net



SITE PLAN
Scale: Not to Scale

CLIENT APPROVAL _____



DOWLING SIGNS
OF NORTH CENTRAL FLORIDA, LLC

18038 NW 246th ST.
High Springs, FL, 32643
Phone 386-201-0819
Fax 386-201-0820
www.dowlingssigns.com