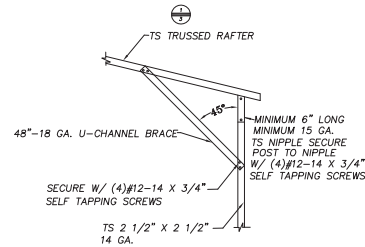
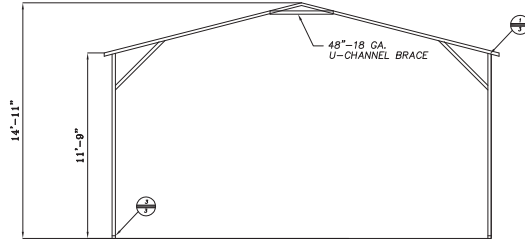
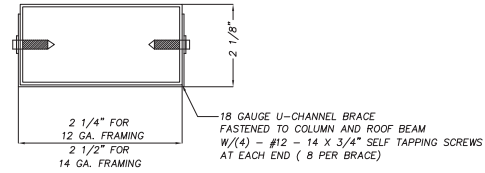


24' X 40' BUILDING

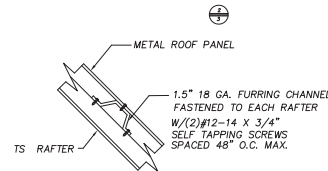
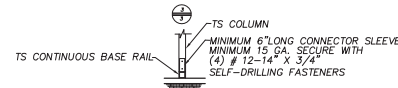
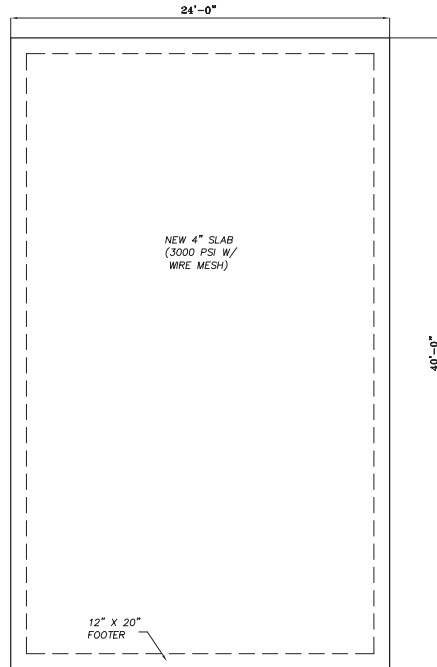


BEAM CROSS SECTION

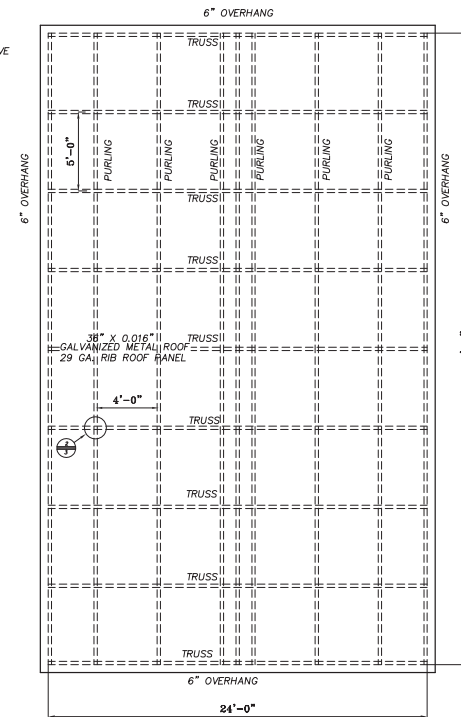


NOTES:

1. ALL FRAMING MEMBERS ARE 2.5" X 2.5" - 14 GA. TS U.N.O.
2. ALL PURLINGS ARE 1.5" - 18 GA. HAT CHANNELS



ROOF PLAN



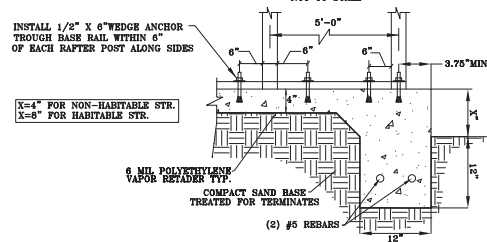
AFFINE ENGINEERING
AND SURVEYING, INC.
CERTIFICATE OF
AUTHORIZATION No. 29140



VICTOR O. MARRERO
FLORIDA P.E. # 78630

Victor O. Marrero
Digitally signed by Victor O. Marrero
Date: 2023.08.23 22:52:15 -04'00'

CONCRETE MONO SLAB BASE RAIL ANCHORAGE



GENERAL NOTES:

CONCRETE

CONCRETE SHALL HAVE A MINIMUM SPECIFIED COMPRESSIVE STRENGTH OF 3000 PSI AT 28 DAYS COVER OVER REINFORCING STEEL

FOR FOUNDATIONS: MINIMUM CONCRETE COVER OVER REINFORCING BARS SHALL BE PER ACI 318 3 INCHES IN FOUNDATION WHERE THE CONCRETE IS IN CONTACT WITH EARTH, OR EXPOSED TO THE EARTH OR WEATHER, AND 1 1/2 INCHES ELSEWHERE.

REINFORCING STEEL

THE TURNDOWN REINFORCING STEEL SHALL BE ASTM A615 GRADE 60. SLAB REINFORCEMENT SHALL BE WELDED WIRE FABRIC MEETING ASTM A 185 / OR FIBERGLASS FIBER REINFORCEMENT

REINFORCEMENT MAY BE BENT IN SHOP OR THE FIELD IF:

1. REINFORCEMENT IS BENT COLD
2. THE DIAMETER OF THE BEND, MEASURED ON THE INSIDE OF THE BAR, IS NOT LESS THAN SIX-BAR DIAMETERS
3. REINFORCEMENT PARTIALLY EMBEDDED IN CONCRETE SHALL NOT BE FIELD BENT.