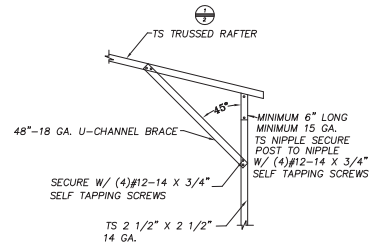
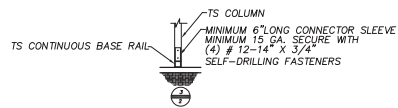
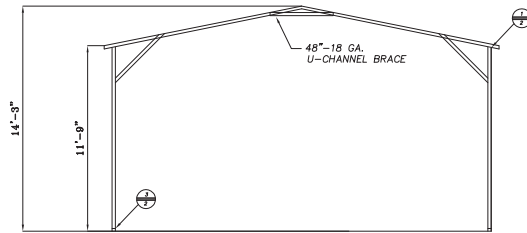


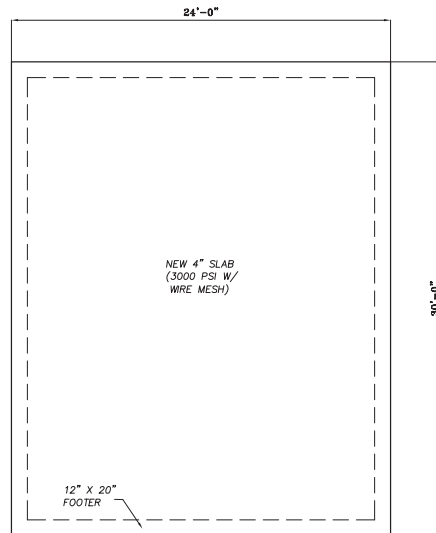
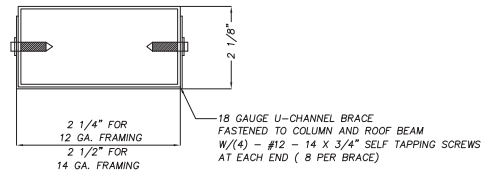
# 24' X 30' BUILDING

## NOTES:

1. ALL FRAMING MEMBERS ARE 2.5" X 2.5" - 14 GA. TS U.N.O.
2. ALL PURLINGS ARE 1.5" - 18 GA. HAT CHANNELS



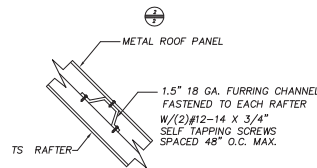
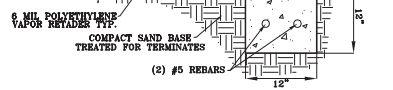
## BEAM CROSS SECTION



CONCRETE MONO SLAB BASE RAIL ANCHORAGE  
NOT TO SCALE

INSTALL 1/2" X 6" WEDGE ANCHOR  
TROUGH BASE RAIL WITHIN 6"  
OF EACH RAFTER POST ALONG SIDES

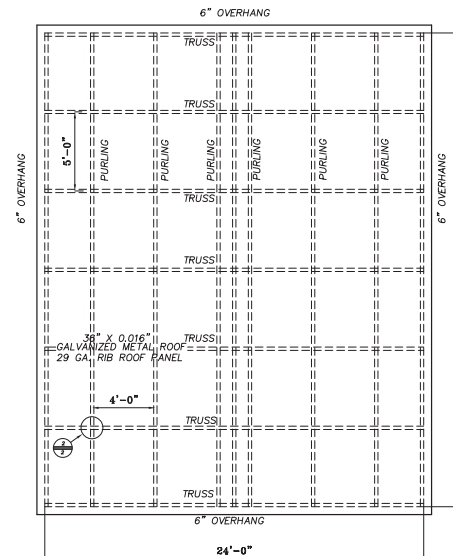
X=4" FOR NON-HABITABLE STR.  
X=6" FOR HABITABLE STR.



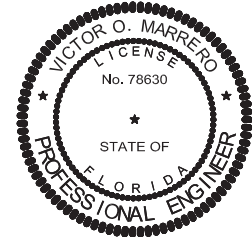
## GENERAL NOTES:

- CONCRETE**  
CONCRETE SHALL HAVE A MINIMUM SPECIFIED COMPRESSIVE STRENGTH OF 3000 PSI AT 28 DAYS  
COVER OVER REINFORCING STEEL
- FOR FOUNDATIONS:** MINIMUM CONCRETE COVER OVER REINFORCING BARS SHALL BE PER ACI 318  
3 INCHES IN FOUNDATION WHERE THE CONCRETE IS IN CONTACT WITH EARTH, OR EXPOSED TO THE EARTH  
OR WEATHER, AND 1 1/2 INCHES ELSEWHERE.
- REINFORCING STEEL**  
THE TURNDOWN REINFORCING STEEL SHALL BE ASTM A615 GRADE 60.  
SLAB REINFORCEMENT SHALL BE WELDED WIRE FABRIC MEETING ASTM A 185 / OR FIBERGLASS FIBER REINFORCEMENT
- REINFORCEMENT MAY BE BENT IN SHOP OR THE FIELD IF:**  
1. REINFORCEMENT IS BENT COLD  
2. THE DIAMETER OF THE BEND, MEASURED ON THE INSIDE OF THE BAR, IS NOT LESS THAN SIX-BAR DIAMETERS  
3. REINFORCEMENT PARTIALLY EMBEDDED IN CONCRETE SHALL NOT BE FIELD BENT.

## ROOF PLAN



AFFINE ENGINEERING  
AND SURVEYING, INC.  
CERTIFICATE OF  
AUTHORIZATION No. 29140



VICTOR O. MARRERO  
FLORIDA P.E. # 78630

Digitally signed  
by Victor O  
Marrero  
Date: 2023.08.23  
22:48:20 -04'00'

PREPARED FOR:  
JAVIER LEAL  
LAKE CITY FLORIDA  
COLUMBIA COUNTY

DRAWING  
23-013  
SHEET  
2