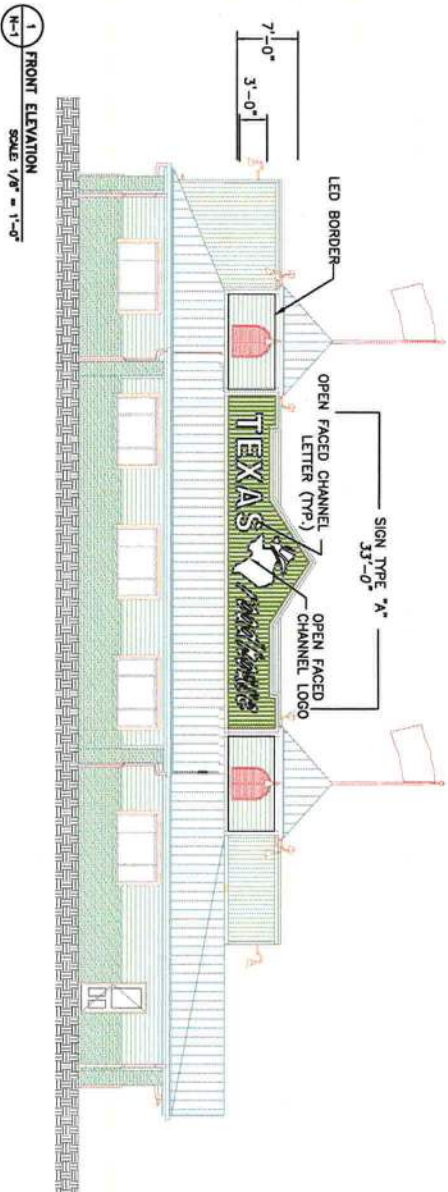
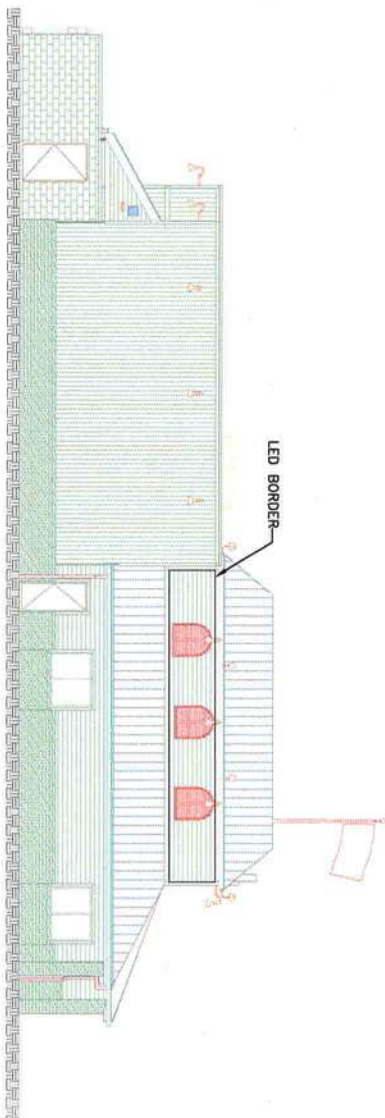


CONSTRUCTION SET NOTE:

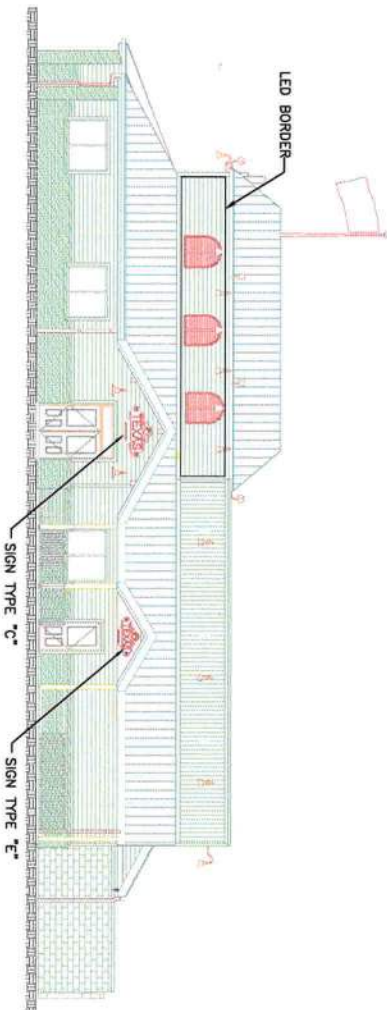
THE FOLLOWING PAGES (DESIGN NO. N-010801, N1-N3) ARE PROVIDED BY FEDERAL SIGN TO RELAY SIGN PLACEMENT, SIGN CONSTRUCTION AND SIGN CIRCUIT ELECTRICAL DETAILS ONLY. ELEVATION DETAILS ARE REPRESENTATIVE OF TYPICAL PROTOTYPE 2C CONSTRUCTION AND ARE NOT TO BE REFERENCED FOR BUILDING CONSTRUCTION PURPOSES.



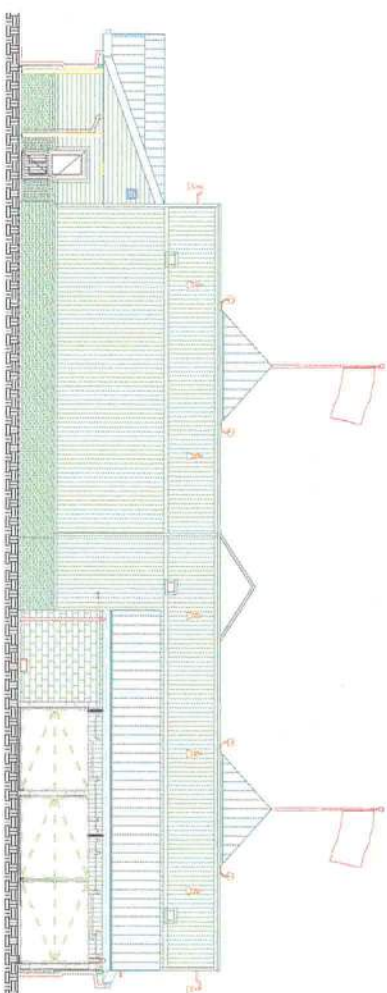
1 FRONT ELEVATION  
SCALE 1/8" = 1'-0"



2 LEFT ELEVATION  
SCALE 1/8" = 1'-0"



3 RIGHT ELEVATION  
SCALE 1/8" = 1'-0"



4 REAR ELEVATION  
SCALE 1/8" = 1'-0"

GENERAL SPECIFICATIONS:

- A. DISPLAYS:
1. BORDER LED: TO BE SLOAN SINGLE ROW LEDSTRIP #701189AE-W
  2. SIGN TYPE "A": OPEN FACED CHANNEL LETTERS PAINTED TO MATCH GRIPGARD #108 05 GLOSS RED WITH DOUBLE TUBE CLEAR RED NEON. LOGO TO BE OPEN FACED CHANNEL LOGO WITH CALON #2100-24 DARK GREEN VINYL BACKGROUND WITH A 1.875" EDGE BORDER ON THE "STATE OF TEXAS" PAINT WHITE, & OVERLAD WITH SINGLE TUBE #6500 WHITE EXPOSED NEON. "HAT" IS OPEN FACED CHANNEL WITH CALON #2100-03 BLACK VINYL. ACCENT, 1.875" EDGE BORDER & INSIDE LINES PAINT YELLOW TO MATCH PMS#122 & OVERLAD WITH CLEAR BRIGHT YELLOW SINGLE TUBE EXPOSED NEON. PAINT "HAT" RETURNS INSIDE AND OUT PMS #122 YELLOW GLOSS PAINT "STATE" RETURNS INSIDE AND OUT WHITE GLOSS
  3. SIGN TYPE "C" and E: S/F FAB. ALUM. CAB. FINISHED SATIN BLACK WITH "STRIPES" CALON #2100-14 TOMATO RED VINYL. OVERLAD WITH SINGLE TUBE #6500 WHITE EXPOSED NEON. "TEXAS" PAINTED GLOSS WHITE OPEN CHANNEL LETTERS WITH CLEAR RED DOUBLE TUBE EXPOSED NEON. "ROADHOUSE": CALON #2100-02 WHITE VINYL COPY WITH SINGLE TUBE CLEAR RED EXPOSED NEON. "LOGO": BACKGROUND CALON #2100-14 TOMATO RED VINYL. "1" "OUTSIDE BORDER": CALON #2100-67 PRIMROSE YELLOW VINYL WITH SINGLE TUBE CLEAR BRIGHT YELLOW EXPOSED NEON OVERLAY. "STATE OF TEXAS LOGO BACKGROUND": CALON #2100-24 DARK GREEN WITH CALON #2100-67 PRIMROSE YELLOW VINYL. 1/2" OUTSIDE BORDER, OVERLAD WITH SINGLE TUBE CLEAR BRIGHT YELLOW EXPOSED NEON. "HAT": CALON #2100-03 BLACK VINYL. ACCENT, 1/2" EDGE BORDER & INSIDE LINES" TO BE CALON #2100-67 PRIMROSE YELLOW VINYL WITH SINGLE TUBE CLEAR BRIGHT YELLOW EXPOSED NEON OVERLAYS
- B. ELECTRICAL REQUIREMENTS:
1. PRIMARY CIRCUITS: IT IS THE RESPONSIBILITY OF THE GENERAL CONTRACTOR TO MAKE FINAL CONNECTION AND PROVIDE THE REQUIRED NUMBER OF BRANCH CIRCUITS TO EACH SIGN LOCATION. ALL BRANCH CIRCUITS FEEDING THE DISPLAYS SHALL MEET THE REQUIREMENTS OF NEC AND ALL LOCAL REGULATORY REQUIREMENTS. ALL BRANCH CIRCUITS SHALL BE DEDICATED TO SIGNS (INCLUDING GROUND AND NEUTRAL) AND SHALL NOT BE SHARED WITH OTHER LOADS. PROPERLY SIZED GROUND WIRE THAT CAN BE TRACED BACK TO THE BREAKER PANEL SHALL BE PROVIDED. SPARKING OF NEUTRAL WITH OTHER LOADS SUCH AS LIGHTING, AIR-CONDITIONING AND OTHER EQUIPMENT IS NOT ALLOWED. SHARED NEUTRAL WITHIN SIGN CIRCUITS MAY BE ALLOWED ONLY IF BALANCED OPPOSITE PHASING IS PROVIDED. ANY DEVIATION FROM THE ABOVE MAY RESULT IN DAMAGE, DELAYS AND ADDITIONAL COSTS.
  2. SIGN INSTALLATION: INSTALLATION MUST MEET SECTION 600 OF NEC AND UL 48 REQUIREMENTS. ALL TRANSFORMERS SHALL BE UL2161 LISTED. ALL COMPONENTS SHALL BE INSTALLED IN ACCORDANCE WITH THE MANUFACTURER'S INSTALLATION INSTRUCTIONS.

GC'S ELECTRICAL CONTRACTOR

\*ALL FINAL ELECTRICAL CONNECTIONS MADE BY ELECTRICAL CONTRACTOR

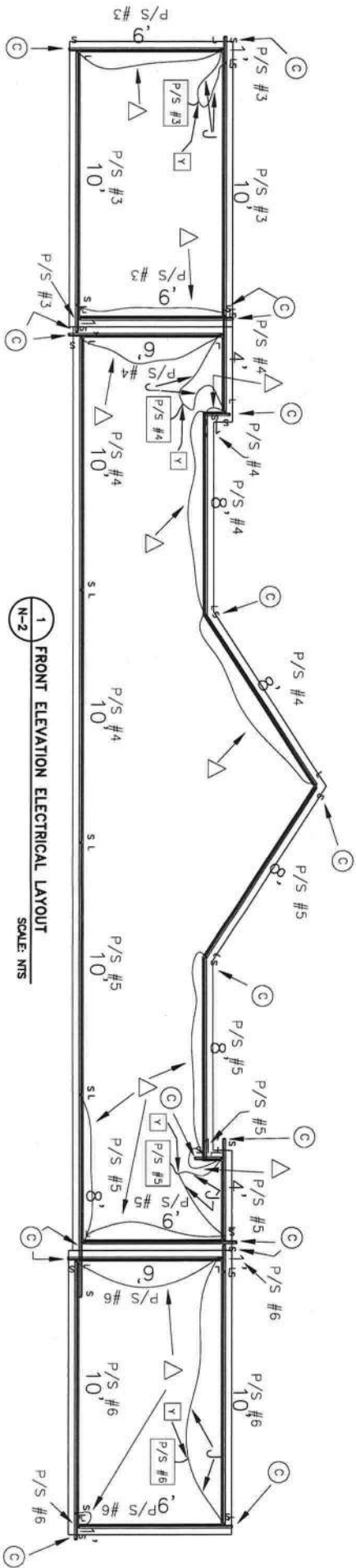


This original drawing is provided as part of a planned project and is not to be exhibited, copied or reproduced without the permission of Federal Heath Sign Company LLC or its authorized agent.

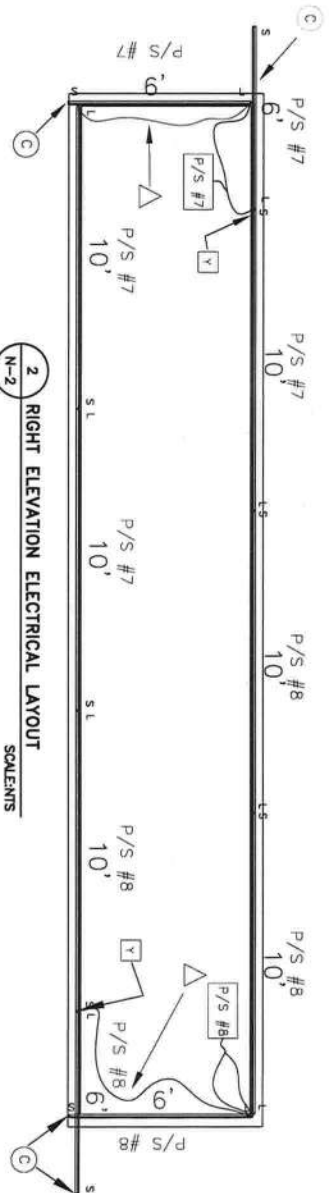


NO.	REVISIONS	DATE	BY
1			
2			
3			
4			
5			

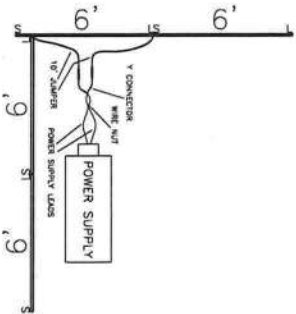
REASON NO.	PROJECT NO.
1	N-010801
2	DRAWN BY: MAESTER
3	DATE: 8/23/19
4	APPROVED BY: SM
5	SCALE:
6	JOB NO.
7	AS NOTED



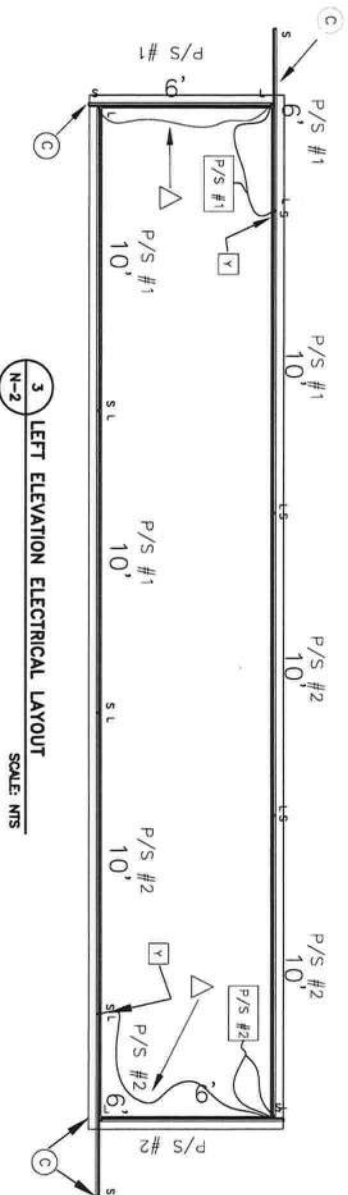
ELECTRICAL REQUIREMENTS:  
(1) 20 AMP 120 VOLT CIRCUITS  
FOR ALL (8) LED POWER SUPPLIES.



4 24 VDC POWER SUPPLY HOOK UP EXAMPLE  
SCALE: NTS



TEXAS ROADHOUSE  
LED Installation Guide



1. On the face of the trim board, snap a cork line 1/4" of an inch in from the inside edge of the trim board.
2. Locate the LED sign, measure and mark mounting holes locations on the cork line. (IMPORTANT: On each unit, the center hole is 1/8" to 3/4" from each side of each unit.)
3. Using #8 x 1/4" and head sheet metal screws, not over 1/4" long, thread them through the trim board, leaving a 1/4" expansion gap between each unit and each unit, and secure them from the back side of the trim board.
4. Using a 1/4" hole punch, punch a hole in the center of each unit, punch using the 90 degree of the center of each unit.
5. Take measurements for cut units. From where the unit is mounted, measure the distance from the center of the unit to the center of the unit, leaving a 1/4" expansion gap between each unit and each unit, and secure them from the back side of the trim board.
6. Take measurements for cut units. From where the unit is mounted, measure the distance from the center of the unit to the center of the unit, leaving a 1/4" expansion gap between each unit and each unit, and secure them from the back side of the trim board.
7. Measure from the end of the unit to the "top" connector, mark where the unit is to be cut. Note: If the unit is cut, the "top" connector will be cut. If the unit is not cut, the "top" connector will be cut. If the unit is cut, the "top" connector will be cut. If the unit is not cut, the "top" connector will be cut.
8. From the "top" connector, measure the distance to the "bottom" connector, and mark where the unit is to be cut. Note: If the unit is cut, the "bottom" connector will be cut. If the unit is not cut, the "bottom" connector will be cut.
9. From the "bottom" connector, measure the distance to the "top" connector, and mark where the unit is to be cut. Note: If the unit is cut, the "top" connector will be cut. If the unit is not cut, the "top" connector will be cut.
10. From the "top" connector, measure the distance to the "bottom" connector, and mark where the unit is to be cut. Note: If the unit is cut, the "bottom" connector will be cut. If the unit is not cut, the "bottom" connector will be cut.
11. Follow the Texas Roadhouse LED Installation Guide.
12. Test each power supply/LED for proper operation.

- PRODUCT B.O.M.
- (19) Each 10' White LEDStripe Lengths
  - (5) Each 8' White LEDStripe Lengths
  - (14) Each 6' White LEDStripe Lengths
  - (2) Each 4' White LEDStripe Lengths
  - (6) Each 1' White LEDStripe Lengths
  - (8) Each 100 Watt Power Supplies
  - (8) Each "Y" Connectors
  - (14) Each 10' Jumper Cables
  - (24) Each 90° Step Corner Covers
  - (6) Each Corner Cover pieces to make custom corners
  - (28) Each Endcaps

WARNING:

CUT THE END WITH THE SMALL CONNECTOR ONLY.

LARGE CONNECTOR

SMALL CONNECTOR

ALL JUNCTION BOXES, PRIMARY WIRING AND FINAL CONNECTION BY GENERAL CONTRATOR'S ELECTRICIAN.

NO.	REVISIONS	DATE	BY
1			
2			
3			
4			
5			
6			
7			
8			
9			
10			
11			
12			
13			
14			
15			
16			
17			
18			
19			
20			
21			
22			
23			
24			
25			
26			
27			
28			

TEXAS

roadhouse

LAKE CITY, FL

COORDINATION SET

This original drawing is provided as part of a planned project and is not to be exhibited, copied or reproduced without the permission of Federal Heath Sign Company LLC or its authorized agent.

FEDERAL HEATH

SIGN COMPANY

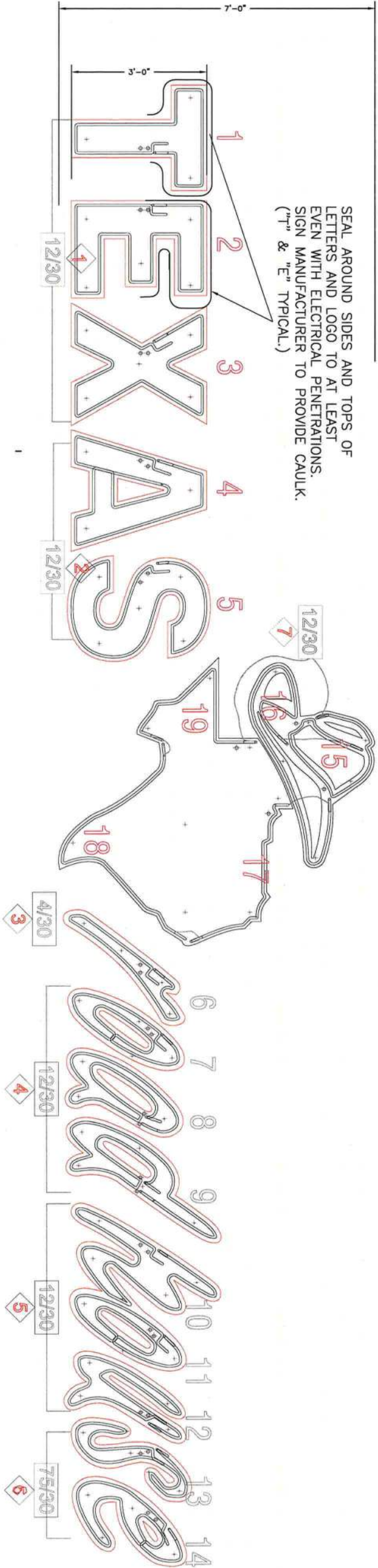
4602 NORTH AVENUE, OCEANSIDE, CA. 92056

(760) 941-0715

DESIGN NO.	N-010801
PROJECT WORK:	S. MASTER
DRAWN BY:	SM
DATE:	8/23/19
APPROVED BY:	SF
SCALE:	AS NOTED
JOB NO.:	-
SHEET NO.:	N-2
OF:	5

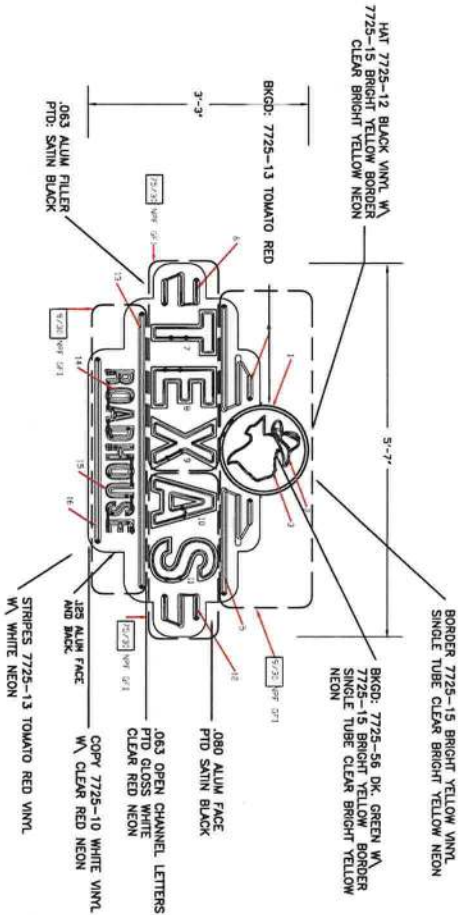


SEAL AROUND SIDES AND TOPS OF LETTERS AND LOGO TO AT LEAST EVEN WITH ELECTRICAL PENETRATIONS. SIGN MANUFACTURER TO PROVIDE CAULK. ("T" & "E" TYPICAL.)

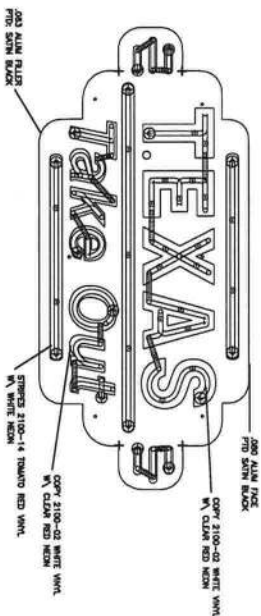


ELECTRICAL REQUIREMENTS:  
(1) 12000\30 @ 2.8 AMPS EACH = 16.8 AMPS  
(2) 20 AMP 120 VOLT CIRCUITS

1 ELECTRICAL LAYOUT SIGN TYPE "A"  
SCALE: NTS



2 ELEVATION SIGN TYPE "C" (3'-3" x 5'-7")  
ELECTRICAL REQUIREMENTS:  
(2) 9000\30 @ 2.16 AMPS EACH  
(2) 2500\30 @ 1.70 AMPS EACH  
TOTAL AMPS 7.72  
(1) 20 AMP 120 VOLT CIRCUITS  
3/4" = 1"



3 ELEVATION SIGN TYPE "E" (2' x 4'5")  
ELECTRICAL REQUIREMENTS:  
(2) 9000\30 @ 2.16 AMPS EACH  
(1) 2500\30 @ 1.70 AMPS EACH  
TOTAL AMPS 3.86  
(1) 20 AMP 120 VOLT CIRCUITS  
3/4" = 1"

TEXAS *road house*  
LAKE CITY, FL  
COORDINATION SET

This original drawing is provided as part of a planned project and is not to be exhibited, copied or reproduced without the permission of Federal Heath © Sign Company LLC or its authorized agent.

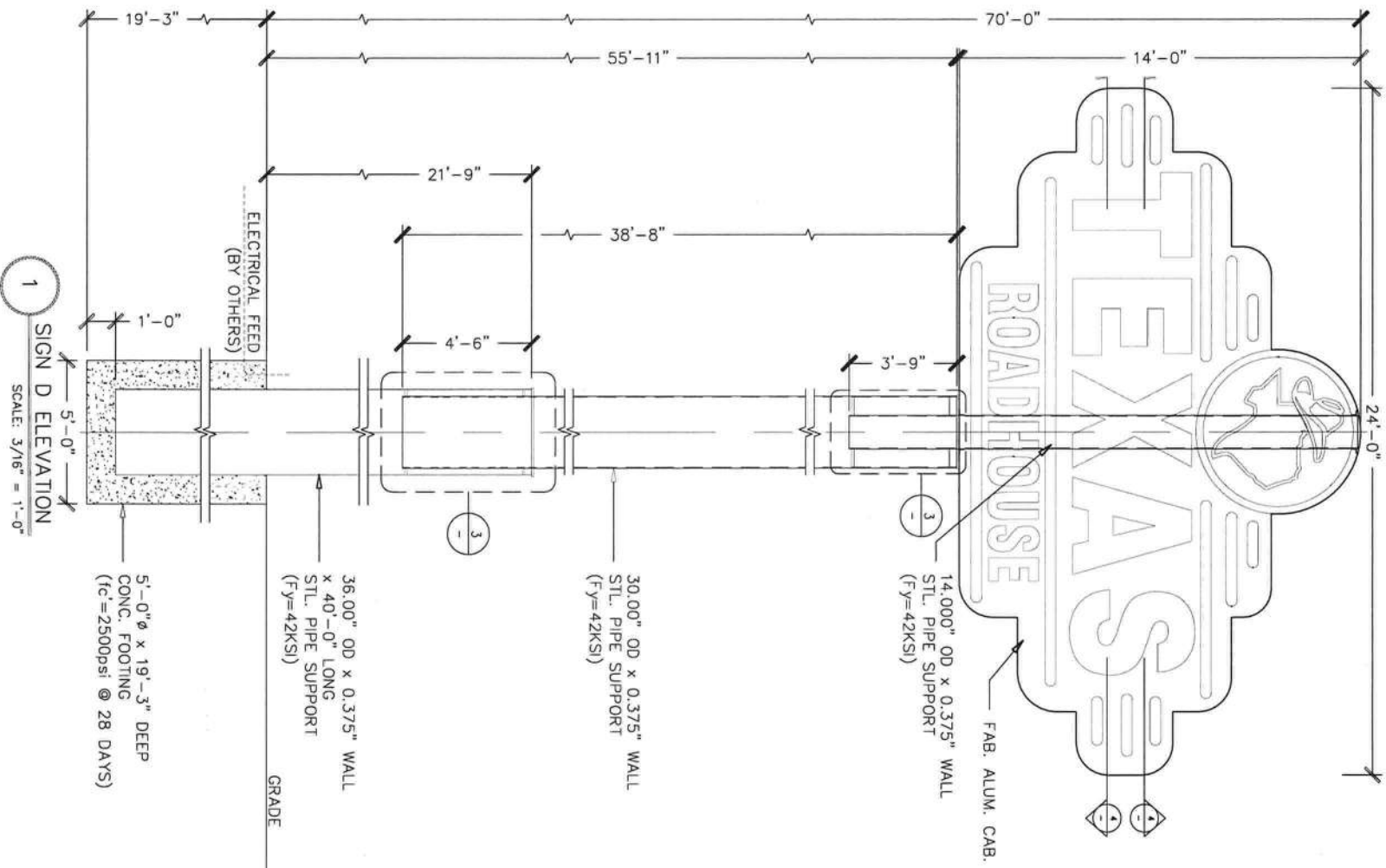
FEDERAL HEATH  
SIGN COMPANY  
4602 NORTH AVENUE, OCEANSIDE, CA. 92056  
(760) 941-0715

GC'S ELECTRICAL CONTRACTOR:  
\*ALL FINAL ELECTRICAL CONNECTIONS  
MADE BY ELECTRICAL CONTRACTOR.

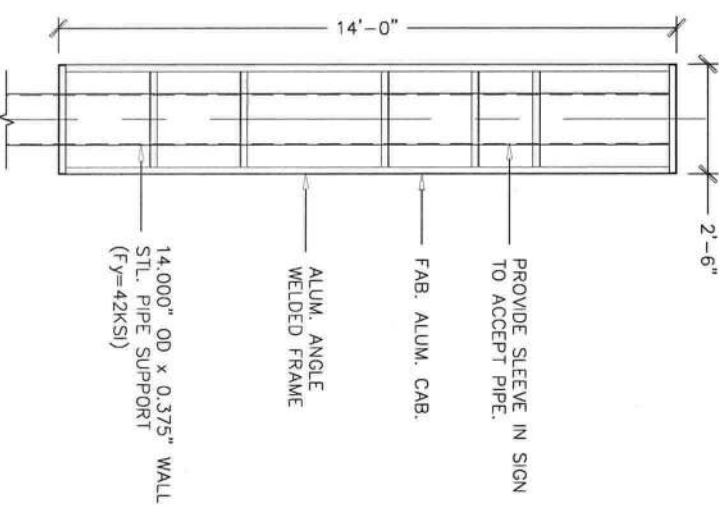
NO.	REVISIONS	DATE	BY

DESIGN NO. N-010801
PROJECT MGR. S. MAESTER
DRAWN BY: SM
DATE: 8/23/19
APPROVED BY:
SCALE: AS NOTED
JOB NO: -

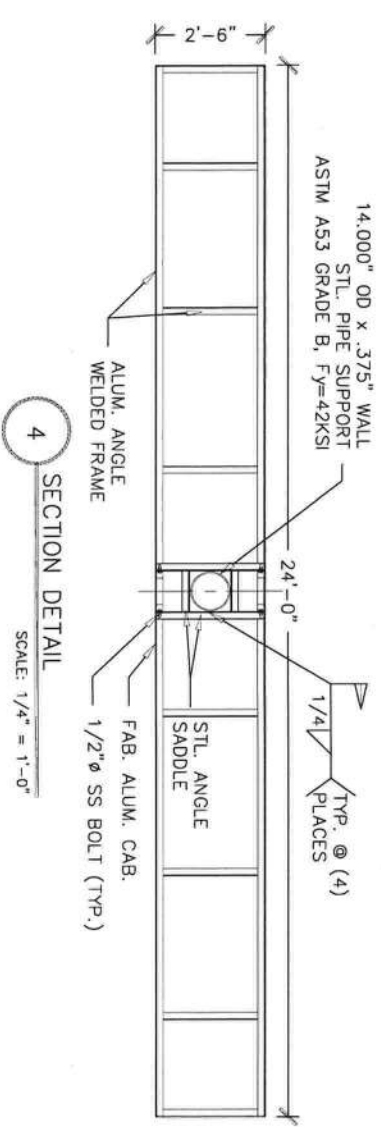
SHEET NO. N-3	OF: 5
---------------	-------



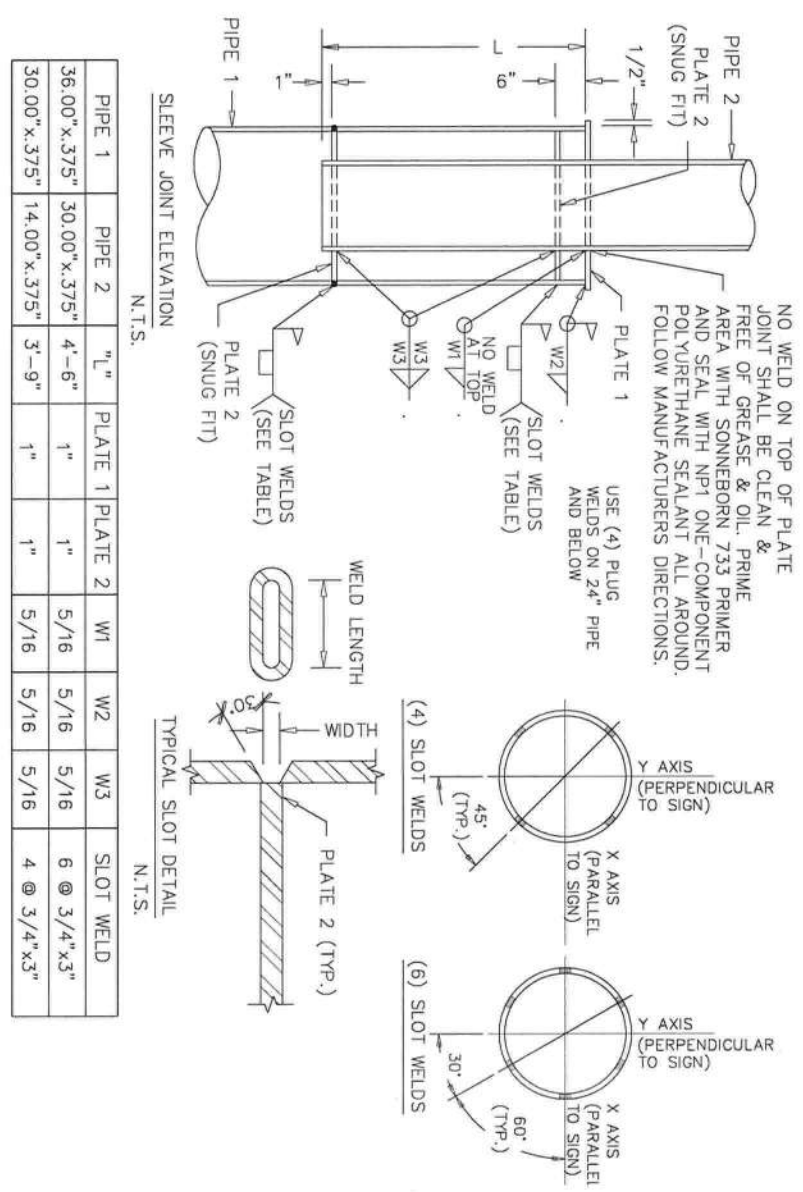
1 SIGN D ELEVATION  
SCALE: 3/16" = 1'-0"



2 SIGN D SIDE VIEW  
SCALE: 1/4" = 1'-0"



4 SECTION DETAIL  
SCALE: 1/4" = 1'-0"



3 PIPE SPLICE DETAIL  
SCALE: N.T.S.

ELECTRICAL REQUIREMENTS:  
54.9 AMPS TOTAL  
(4) 20 AMP 120 VOLT CIRCUITS

1 ELECTRICAL LAYOUT SIGN TYPE "D"  
SCALE: N.T.S.

GC'S ELECTRICAL CONTRACTOR:  
\*ALL FINAL ELECTRICAL CONNECTIONS  
MADE BY ELECTRICAL CONTRACTOR.



LED WIRE

LED LOCATION APPROVED HIGH VOLTAGE  
SPLICE BOX BY INSTALLER, AS REQUIRED.

TRANSFORMERS & LED POWER SUPPLIES  
IN ENCLOSURE ON BACK SIDE OF WALL (TYP.)

120 VOLT / 30 MA  
TRANSFORMER (TYP.)

LED STRIPE

SILICONE ALL AROUND

Sealant Along TOP and SIDES  
pass secondary penetrations.  
Silicone Provided by installers.

OPEN FACED CHANNEL  
LETTER (TYP.)

RUST RESISTANT #10 x 1.5" Self  
Tapping Screws (5) Per Letter, (8) Logo.  
BY INSTALLER

LOGO  
HAT:  
BLACK Masters Technology Boots and  
Black Slewing.

STATE: WHITE Masters Technology Boots and  
Black Slewing.

3 N-5	SECTION DETAIL (TYP.)	FULL SCALE
----------	-----------------------	------------

4  
N-5

DETAIL (TYP.)

FULL SCALE

3"

LED LOCATION APPROVED HIGH VOLTAGE ENCLOSURE BY INSTALLER, AS REQUIRED.

LED WIRE

LED STRIPE

Silicone Along TOP and SIDES pass secondary penetrations. Silicone Provided by installers.

OPEN FACED CHANNEL LETTER (TYP)

RUST RESISTANT #10 x 1.5" Self Tapping Screws (5) Per Letter, (8) Logo.

LOGO HAT:

BLACK Masters Technology Boots and Black Sleeving.

STATE: WHITE Masters Technology Boots and Black Sleeving.

CHANNEL LETTERS:

(28) RED Master Technology Boots and Sleeving (AUTO ZONE RED) (SEE 2, N-4 for Connection Detail)

SEAL AROUND HIGH VOLTAGE SLEEVING AND INSIDE BUSHING, BY INSTALLER.

SEAL AROUND SECONDARY PENETRATIONS BEFORE SECURING LETTER TO WALL.

MINIMUM OF 6" OF SLEEVING INSIDE METALLIC LIQUID TITLE.

D/T CLEAR EXPOSED RED NEON (CHANNEL LETTERS).

OUTLINED CLEAR BRITE YELLOW ARGON NEON (HAT).

OUTLINED 6500 BRITE WHITE ARGON NEON (STATE).

STAINED VERTICAL CEDAR SIDING

NOM. 1x6 CEDAR TRIM

WHITE LED LIGHTING MOUNTED INNER PERIMETER OF GREEN TRIM BOARDS.

1/2" METALLIC LIQUID TITLE

(2) PENETRATIONS PER LETTER

(4) FOR LOGO

TRANSFORMER BOX MOUNTING BRACKETS BY LOCAL INSTALLER

ELECTRICAL JUNCTION BOX ON BACK SIDE OF WALL BY GENERAL CONTRACTOR

120 VOLT / 30 MA TRANSFORMER (TYP.)

TRANSFORMERS & LED POWER SUPPLIES IN ENCLOSURE ON BACK SIDE OF WALL (TYP.)

NOTE: ROOFING CONTRACTOR TO SEAL ALL MEMBRANE ROOF/WALL PENETRATIONS

METAL CONNECTING

SILICONE ALL AROUND







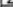
1  
N-5

SECTION DETAIL

SCALE: NTS

2 MASTER TECHNOLOGY BOOT DETAIL (TYP.)  
N-5 FULL SCALE

DESIGN NO:	PROJECT NO.:
	N-010801
DRAWN BY:	S. MAESER
DATE:	SM
APPROVED BY:	8/23/19
SCALE:	-
JOB NO:	AS NOTED
CUSTOMER NO.	LOC.

NO.	REVISIONS	DATE	BY
			
			
			
			
			
			
			



This original drawing is provided as part of a planned project and is not to be exhibited, copied or reproduced without the permission of Federal Health & Sign Company LLC or its authorized agent.

