

ROUNTREE MOORE NISSAN

DC FAST CHARGING STATION (1) ABB TERRA 24 DC WALL BOX (24KW)

CHARGER WITH PEDESTAL

4262 W US HWY 90, LAKE CITY, FL 32055, USA

"DRAWINGS BASED ON THE 2017 NATIONAL ELECTRIC CODE"

GENERAL NOTES:

1. THE ELECTRICAL WORKS SHALL COMPLY WITH THE NEC 2017 AND ANY OTHER LOCAL, NATIONAL CODE OR REGULATIONS AS ADOPTED BY THE COUNTY CITY OF LAKE CITY.

SCOPE OF WORK:

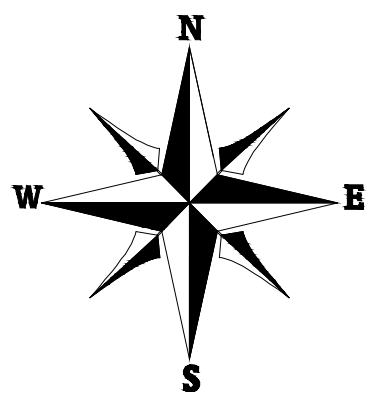
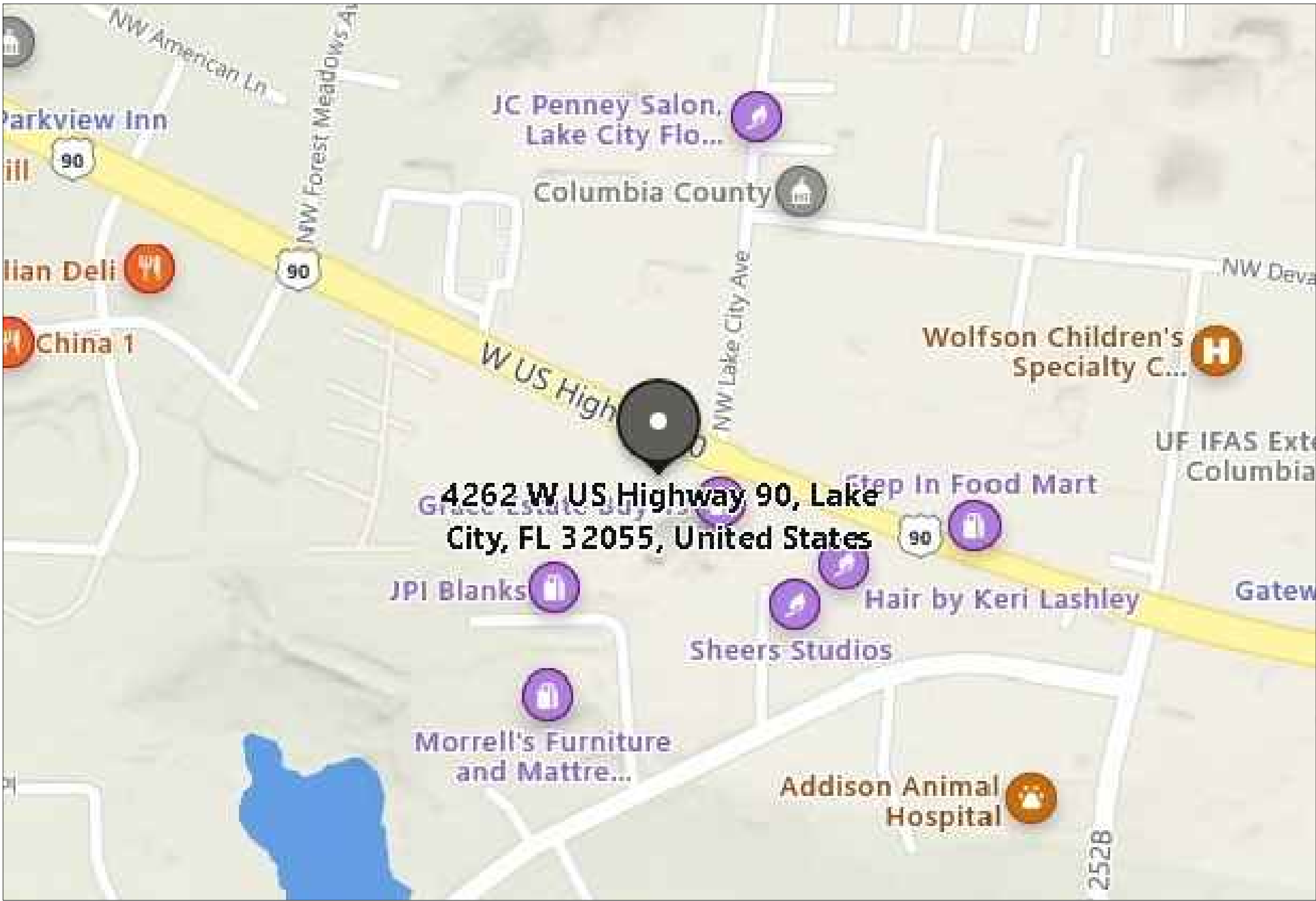
1. INSTALLATION OF NEW ABB TERRA 24 DC WALL BOX CHARGING STATION.
2. SET NEW CHARGING STATION ON PEDESTAL.
3. CONNECTING ALL CONDUCTORS AND GROUND WIRE.
4. VERIFY VOLTAGE, TEST AND INSPECT NEW CHARGING STATION.

DRAWING INDEX

EV-00	COVER SHEET
EV-01	SITE PLAN
EV-02	EVCS PLAN
EV-03	SINGLE LINE DIAGRAM

ELECTRIC VECHILE CHARGING STATION PROJECT

VICINITY MAP



COUNTY REVIEW STAMP



In-Charge Energy, Inc.
PO BOX 73292, N.Chestefield,
VA 23235
1433 5th St, Santa Monica, CA 90401
service@inchargeus.com
eFax 866-579-8091 | www.inchargeus.com

ROUNTREE
MOORE NISSAN

4262 W US HWY 90,
LAKE CITY, FL 32055,USA

SIGNATURE WITH SEAL

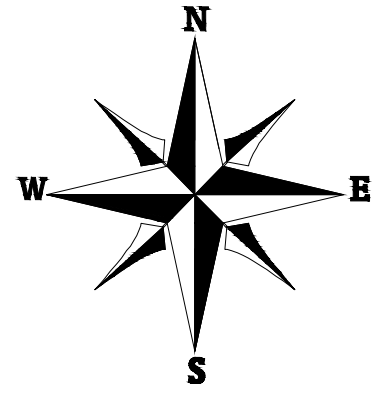
REVISIONS

REV	DESCRIPTION	DATE

CHECKED BY	
DATE	02/11/2022
DESIGNER	OAN
SCALE:	N.T.S

COVER SHEET

EV -00



- LEGENDS**
- ACD - AC DISCONNECT
 - MDP - MAIN DISTRIBUTION PANEL
 - ACCESS AISLE
 - PNL - PANEL B
 - EV - EV CHARGER
 - CONDUIT RUN
 - CONCRETE PAD
 - T - TRANSFORMER
 - ACCESSIBLE PARKING
 - (E) - EXISTING
 - (N) - NEW

COUNTY REVIEW STAMP



In-Charge Energy, Inc.
PO BOX 73292, N.Chestefield,
VA 23235
1433 5th St, Santa Monica, CA 90401
service@inchargeus.com
eFax 866-579-8091 || www.inchargeus.com

ROUNTREE
MOORE NISSAN

4262 W US HWY 90,
LAKE CITY, FL 32055,USA

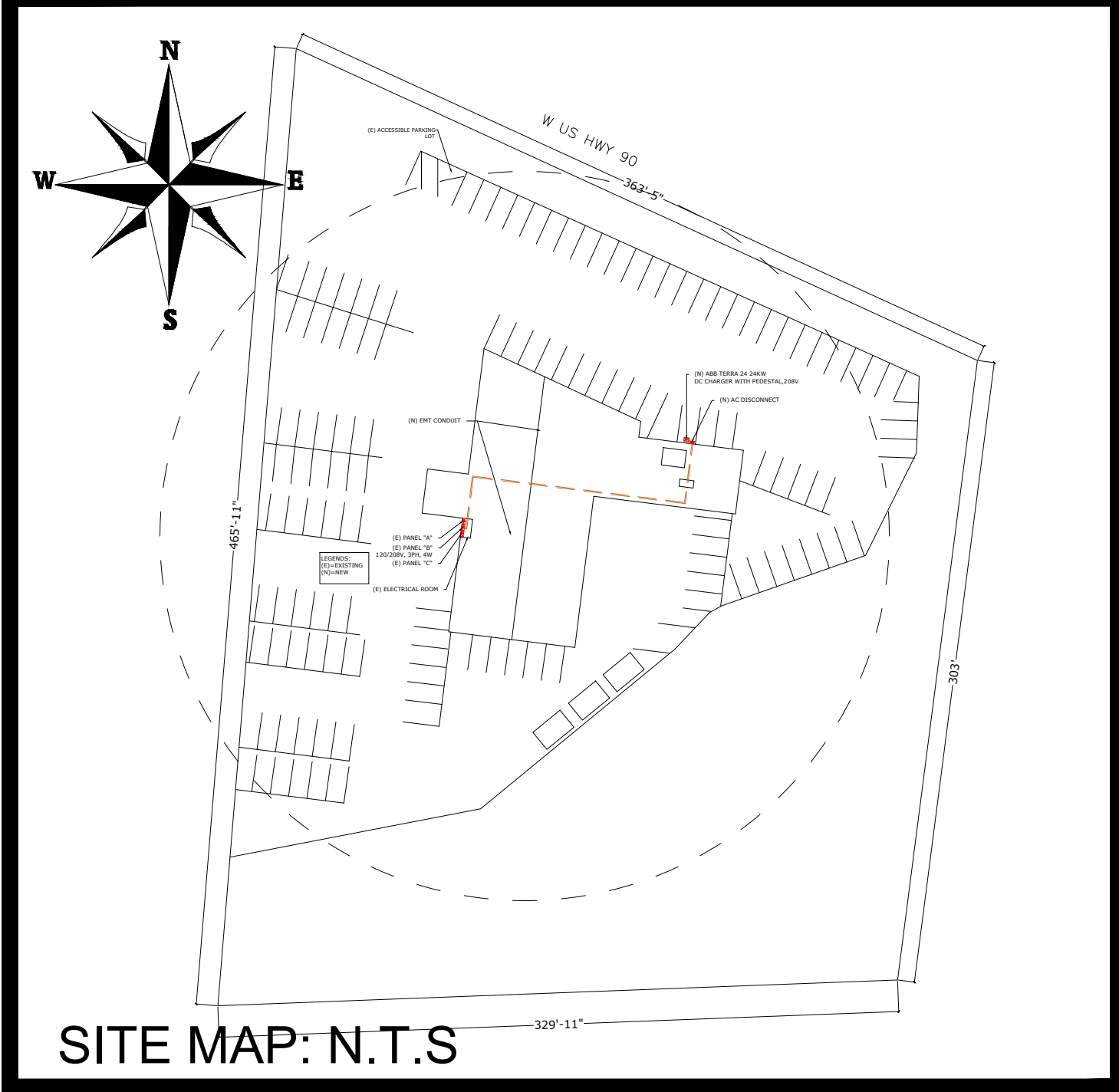
SIGNATURE WITH SEAL

REVISIONS		
REV	DESCRIPTION	DATE

CHECKED BY	
DATE	02/11/2022
DESIGNER	OAN
SCALE: 1/16" = 1'-0"	

SITE PLAN
EV -01

SITE PLAN
1/16" =1'-0"



SITE MAP: N.T.S

LEGENDS:
(E)=EXISTING
(N)=NEW

- LEGENDS
- ACD - AC DISCONNECT
 - MDP - MAIN DISTRIBUTION PANEL
 - PNL - PANEL B
 - ACCESS AISLE
 - EV - EV CHARGER
 - CONDUIT RUN
 - CONCRETE PAD
 - T - TRANSFORMER
 - ACCESSIBLE PARKING



ELECTRIC VEHICLE CHARGING STATION PLAN

1/16" = 1'-0"

COUNTY REVIEW STAMP



In-Charge Energy, Inc.
PO BOX 73292, N.Chestfield,
VA 23235
1433 5th St, Santa Monica, CA 90401
service@inchargeus.com
eFax 866-579-8091 | www.inchargeus.com

ROUNTREE
MOORE NISSAN

4262 W US HWY 90,
LAKE CITY, FL 32055, USA

SIGNATURE WITH SEAL

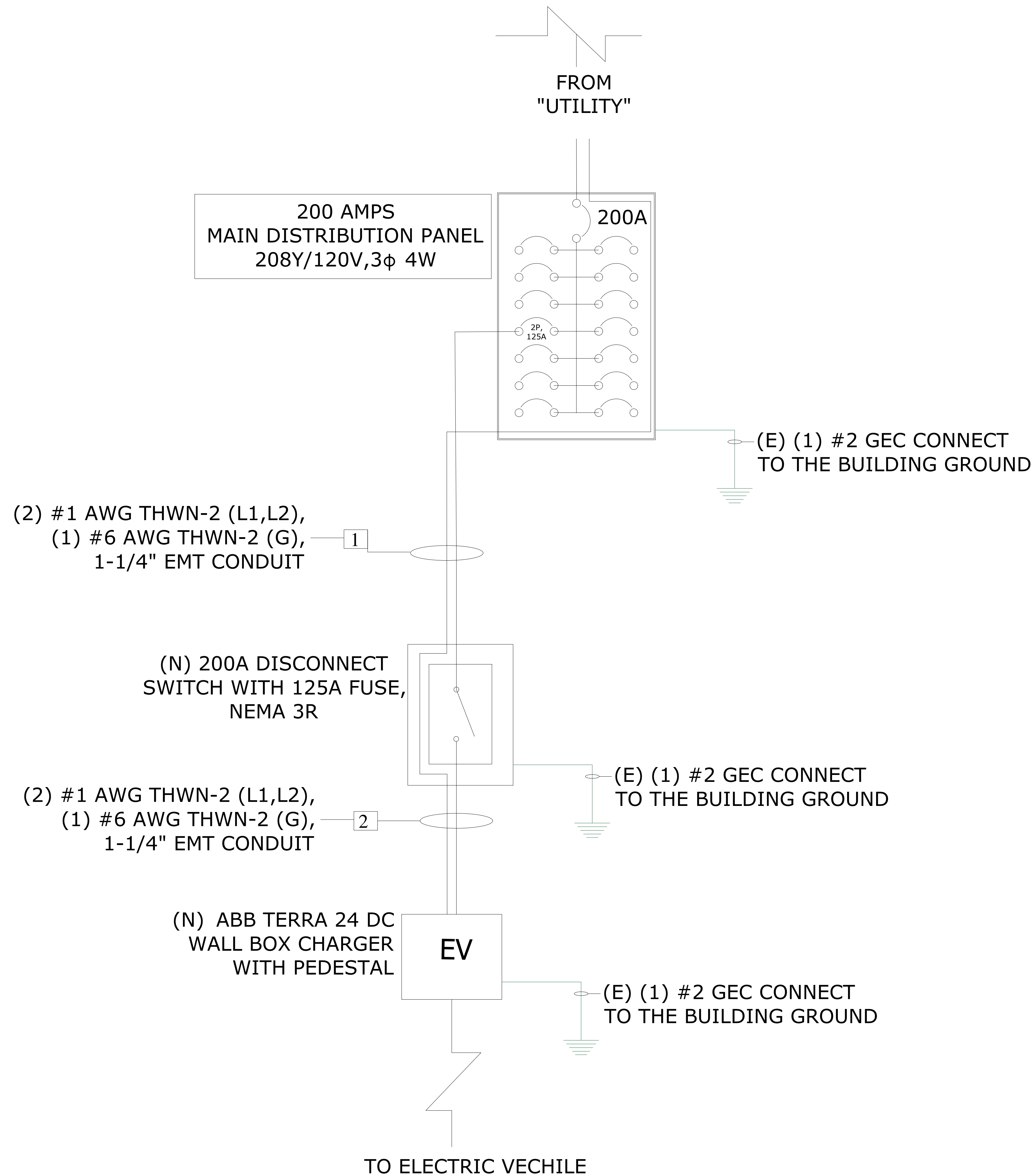
REVISIONS

REV	DESCRIPTION	DATE

CHECKED BY	
DATE	02/11/2022
DESIGNER	OAN
SCALE:	1/8" = 1'-0"

EVCS PLAN

EV-02



LEGENDS:
(E)=EXISTING
(N)=NEW

COUNTY REVIEW STAMP



In-Charge Energy, Inc.
PO BOX 73292, N.Chestefield,
VA 23235
1433 5th St, Santa Monica, CA 90401
service@inchargeus.com
eFax 866-579-8091 || www.inchargeus.com

ROUNTREE
MOORE NISSAN

4262 W US HWY 90,
LAKE CITY, FL 32055,USA

SIGNATURE WITH SEAL

REVISIONS

REV	DESCRIPTION	DATE

CHECKED BY	
DATE	02/11/2022
DESIGNER	OAN
SCALE:	N.T.S

SINGLE LINE DIAGRAM

EV-03