

3' X 3' CONCRETE FOOTING
18" DEEP WITH A MAT OF #6
BARS AT 6" C.C. IN BOTTOM

2- 3/4" DIAM ANCHOR BOLTS

3' X 3' CONCRETE FOOTING
18" DEEP WITH A MAT OF #6
BARS AT 6" C.C. IN BOTTOM

FOUNDATION PLAN

8" DEEP 4000 P.S.I. CONCRETE SLAB
2 LAYERS OF 6 X 6 10/10 ROAD MESH
SAW CUT INTO AREAS LESS THAN 10' X 10'

SECTION A-A

3- #6 CONTINUOUS 24" LAP

SECTION B-B

4" DEEP 3000 P.S.I. CONCRETE SLAB
1 LAYER OF 6 X 6 10/10 ROAD MESH
SAW CUT INTO AREAS LESS THAN 10' X 10'

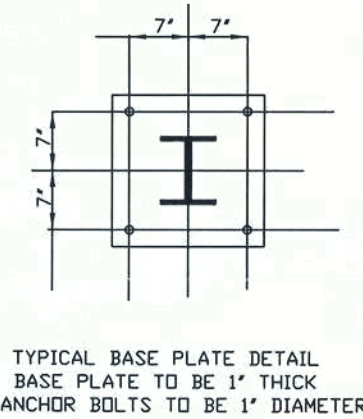
EXPANSION JOINT
1/2" IMPREGNATED FELT

CUT BACK SHEETING AT
TO FLOOR LEVEL

THICKEN EDGE OF SLAB

EXISTING COLUMN FOOTING
TO REMAIN

1" GALV SHEETING
TYPICAL ALL ROUND



THESE DRAWINGS HAVE BEEN DEVELOPED FROM MEASUREMENTS
TAKEN IN A BUILDING WHICH WAS OCCUPIED
AND FULLY OPERATIONAL.
ALL DIMENSIONS MUST BE FIELD CHECKED AND VERIFIED.

IT IS THE SUB CONTRACTORS RESPONSIBILITY TO
VERIFY ALL DIMENSIONS AND DETAILS AND
REPORT ANY DISCREPANCIES TO ELIZABETHAN
DEVELOPMENT INC BEFORE BEGINNING CONSTRUCTION.

NOTE: IT IS THE RESPONSIBILITY OF THE SUB CONTRACTOR TO
REVIEW STEEL ENGINEERING PACKAGE AGAINST FLOOR PLAN AND ELEVATIONS
BEFORE BEGINNING CONSTRUCTION AND REPORT ANY DISCREPANCIES TO ELIZABETHAN DEVELOPMENT, INC

NOTE: CLIENT IS RESPONSIBLE FOR VERIFYING THAT PLANS ARE ACCEPTABLE BEFORE SIGN OFF

STRUCTURAL DESIGN ONLY, BY OR UNDER
THE DIRECT SUPERVISION OF R.H. WILSON, P.E.
R. H. WILSON AND ASSOCIATES
RONALD H. WILSON P.E. LIC. # 9710
CERTIFICATE OF AUTHORIZATION 6272

I RON WILSON, P.E., LISC. 9710 DO HEREBY CERTIFY THAT
THESE CONSTRUCTION DRAWINGS MEET OR EXCEED THE
110 MPH WIND LOAD REQUIREMENTS
OF FBC 2007 W/ 2009 SUPPLEMENT

ENGINEERING SIGN OFF

R. H. Wilson

PLANT REMODEL AND EXPANSION
FOR
SAVAGE SERVICES CORPORATION
228 NE MCLOSKEY AVENUE
LAKE CITY
FLORIDA 32056

SHEET

1

ELIZABETHAN DEVELOPMENT INC

STATE CERTIFIED GENERAL CONTRACTORS CGC 012313

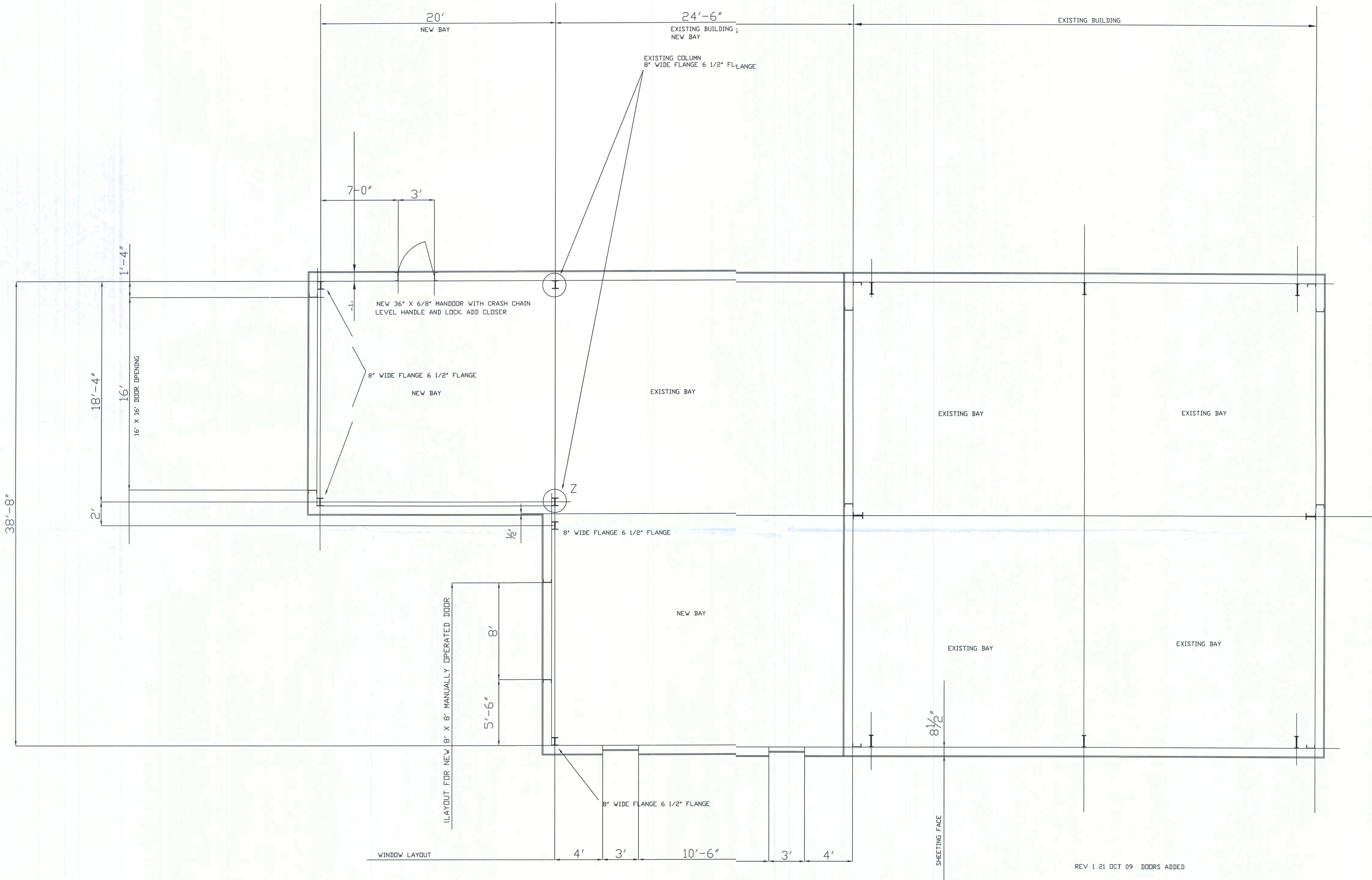
MODEL

XX

REV. DATE DESCRIPTION

FOUNDATION

ELIZABETHAN DEVELOPMENT INC 3393 CYPRESS GARDENS RD, WINTER HAVEN 863 294 6749 FAX 863 299 5552
R. H. WILSON & ASSOCIATES P.O. BOX 915260 LONGWOOD FL 32791-5260 (407) 682-4052 (407) 682-3841 FX



FLOOR PLAN

THESE DRAWINGS HAVE BEEN DEVELOPED FROM MEASUREMENTS TAKEN IN A BUILDING WHICH WAS OCCUPIED AND FULLY OPERATIONAL. ALL DIMENSIONS MUST BE FIELD CHECKED AND VERIFIED.

IT IS THE SUB CONTRACTORS RESPONSIBILITY TO VERIFY ALL DIMENSIONS AND DETAILS AND REPORT ANY DISCREPANCIES TO ELIZABETHAN DEVELOPMENT INC BEFORE BEGINNING CONSTRUCTION.

NOTE: IT IS THE RESPONSIBILITY OF THE SUB CONTRACTOR TO REVIEW STEEL ENGINEERING PACKAGE AGAINST FLOOR PLAN AND ELEVATIONS. IT IS THE RESPONSIBILITY OF THE SUB CONTRACTOR TO VERIFY ALL DIMENSIONS AND DETAILS AND REPORT ANY DISCREPANCIES TO ELIZABETHAN DEVELOPMENT INC BEFORE BEGINNING CONSTRUCTION.

NOTE: CLIENT IS RESPONSIBLE FOR VERIFYING THAT PLANS ARE ACCEPTABLE BEFORE SIGN OFF

STRUCTURAL DESIGN ONLY, BY OR UNDER THE DIRECT SUPERVISION OF R.H. WILSON, P.E.
R. H. WILSON AND ASSOCIATES
RONALD H. WILSON P.E. LIC. # 9710
CERTIFICATE OF AUTHORIZATION 8272

I RON WILSON, P.E., LISC. 9710 DO HEREBY CERTIFY THAT THESE CONSTRUCTION DRAWINGS MEET OR EXCEED THE 110 MPH WIND LOAD REQUIREMENTS OF FBC 2007 W/ 2009 SUPPLEMENT

ENGINEERING SIGN OFF

R. H. Wilson

ELIZABETHAN DEVELOPMENT INC
STATE CERTIFIED GENERAL CONTRACTORS CGC 012313

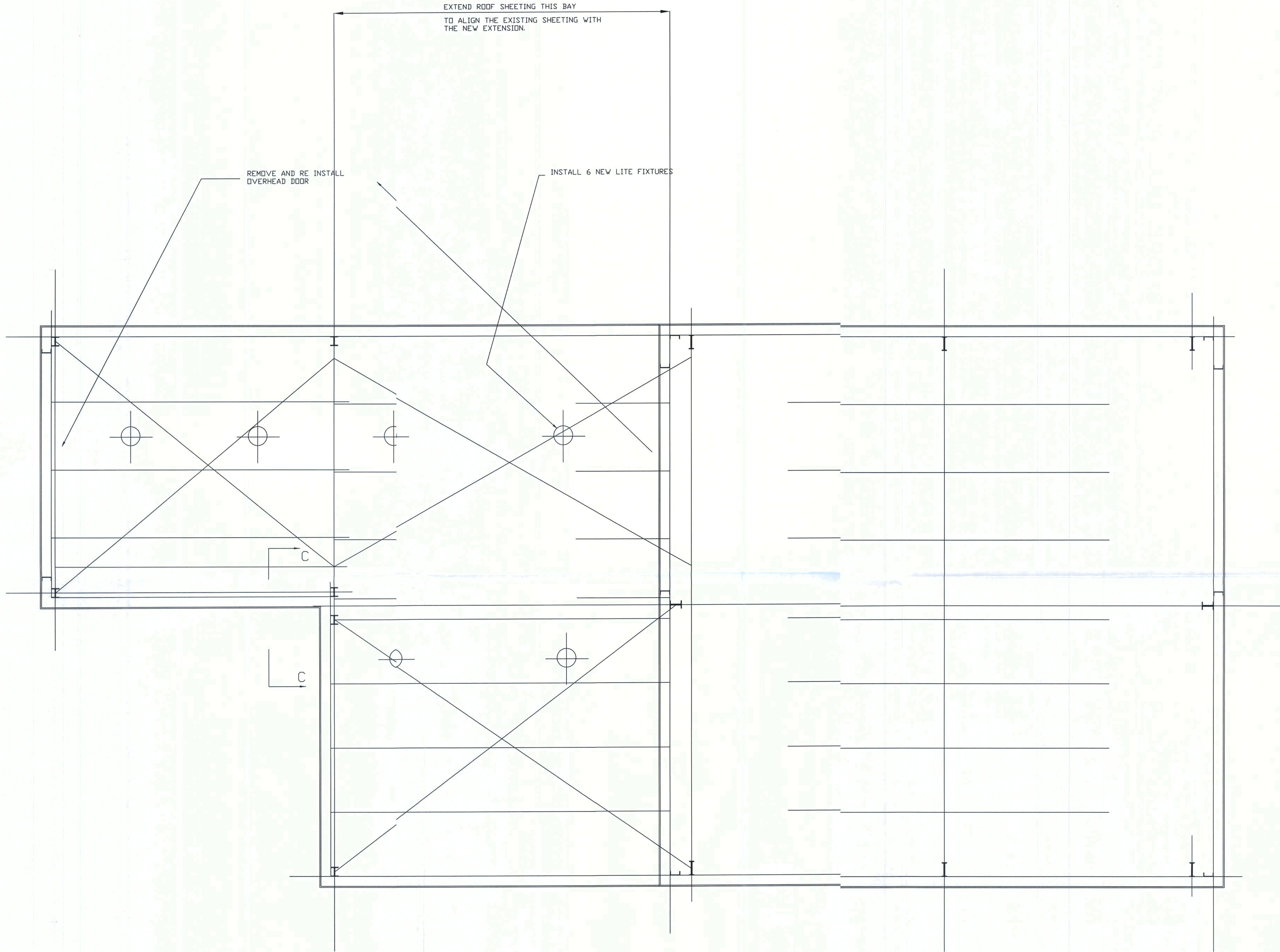
ELIZABETHAN DEVELOPMENT INC 3393 CYPRESS GARDENS RD, WINTER HAVEN 863 294 6749 FAX 863 299 5552
R. H. WILSON & ASSOCIATES P.O. BOX 915260 LONGWOOD FL 32791-5260 (407) 682-4052 (407) 682-3841 FX

SCALE AS NOTED
DRAWN BY
ALAN TAYLOR
9-20-2009

PLANT REMODEL AND EXPANSION
FOR
SAVAGE SERVICES CORPORATION
228 NE MCLOSKEY AVENUE
LAKE CITY
FLORIDA 32056

SHEET

2



NOTES:
REMOVE SHEETING FROM EXISTING BUILDING AS REQUIRED.
REMOVE TRIM FROM EXISTING BUILDING AS REQUIRED.
REMOVE TRIM FROM EXISTING COVERED BAY AS NEEDED
RE PLUMB AND RE ALIGN COLUMN MARKED "Z"
RELOCATE EXISTING OVERHEAD DOOR TO NEW LOCATION

THESE DRAWINGS HAVE BEEN DEVELOPED FROM MEASUREMENTS
TAKEN IN A BUILDING WHICH WAS OCCUPIED
AND FULLY OPERATIONAL.
ALL DIMENSIONS MUST BE FIELD CHECKED AND VERIFIED.

IT IS THE SUB CONTRACTORS RESPONSIBILITY TO
VERIFY ALL DIMENSIONS AND DETAILS AND
REPORT ANY DISCREPANCIES TO ELIZABETHAN
DEVELOPMENT INC BEFORE BEGINNING CONSTRUCTION.

NOTE: IT IS THE RESPONSIBILITY OF THE SUB CONTRACTOR TO
REVIEW STEEL ENGINEERING PACKAGE AGAINST FLOOR PLAN AND ELEVATIONS.
REVIEW W/ ELIZABETHAN DEVELOPMENT INC BEFORE BEGINNING CONSTRUCTION.

STRUCTURAL DESIGN ONLY, BY OR UNDER
THE DIRECT SUPERVISION OF R.H. WILSON, P.E.
R. H. WILSON AND ASSOCIATES
RONALD H. WILSON P.E. LIC. # 9710
CERTIFICATE OF AUTHORIZATION 8272

I RON WILSON, P.E., LISC. 9710 DO HEREBY CERTIFY THAT
THESE CONSTRUCTION DRAWINGS MEET OR EXCEED THE
110 MPH WIND LOAD REQUIREMENTS
OF FBC 2007 W/ 2009 SUPPLEMENT

ENGINEERING SIGN OFF

R.H. Wilson

ROOF LAYOUT: ALL PURLINS Z TYPE

SCALE AS NOTED
DRAWN BY
**ALAN
TAYLOR**
4-20-2009

PLANT REMODEL AND EXPANSION
FOR
SAVAGE SERVICES CORPORATION
228 NE MCLOSKEY AVENUE
LAKE CITY
FLORIDA 32056

SHEET

3

ELIZABETHAN DEVELOPMENT INC.
STATE CERTIFIED GENERAL CONTRACTORS CGC 012313

MODEL
XX

REV.	DATE	DESCRIPTION
		ROOF PLAN

ELIZABETHAN DEVELOPMENT INC 3393 CYPRESS GARDENS RD, WINTER HAVEN 863 294 6749 FAX 863 299 5552
R. H. WILSON & ASSOCIATES P.O. BOX 915260 LONGWOOD FL 32791-5260 (407) 682-4052 (407) 682-3841 FX



NOTE: CLIENT IS RESPONSIBLE FOR VERIFYING THAT PLANS ARE ACCEPTABLE BEFORE SIGN OFF



SECTION C-C

R.H. Wilso

THESE DRAWINGS HAVE BEEN DEVELOPED FROM MEASUREMENTS
TAKEN IN A BUILDING WHICH WAS OCCUPIED
AND FULLY OPERATIONAL.
ALL DIMENSIONS MUST BE FIELD CHECKED AND VERIFIED.

IT IS THE SUB CONTRACTORS RESPONSIBILITY TO
VERIFY ALL DIMENSIONS AND DETAILS AND
REPORT ANY DISCREPANCIES TO ELIZABETHAN
DEVELOPMENT INC BEFORE BEGINNING CONSTRUCTION.

NOTE: IT IS THE RESPONSIBILITY OF THE SUB CONTRACTOR TO
REVIEW STEEL ENGINEERING PACKAGE AGAINST FLOOR PLAN AND ELEVATIONS
FOR CONFORMANCE WITH ALL APPLICABLE CODES AND REGULATIONS.

NOTE: CLIENT IS RESPONSIBLE FOR VERIFYING THAT PLANS ARE ACCEPTABLE BEFORE SIGN OFF

EXISTING OCCUPANCY: FACTORY INDUSTRIAL

EXISTING CONSTRUCTION: TYPE 1V PRE ENGINEERED METAL BUILDING.
UNPROTECTED.

WIND SPEED 110 MPH 3 SEC GUSTS

WIND IMPORTANCE FACTOR 1

WIND EXPOSURE B

INTERNAL PRESURE COEFFICIENT +/- .18 ENCLOSED.

COMPONENTS AND CLADDING: NA

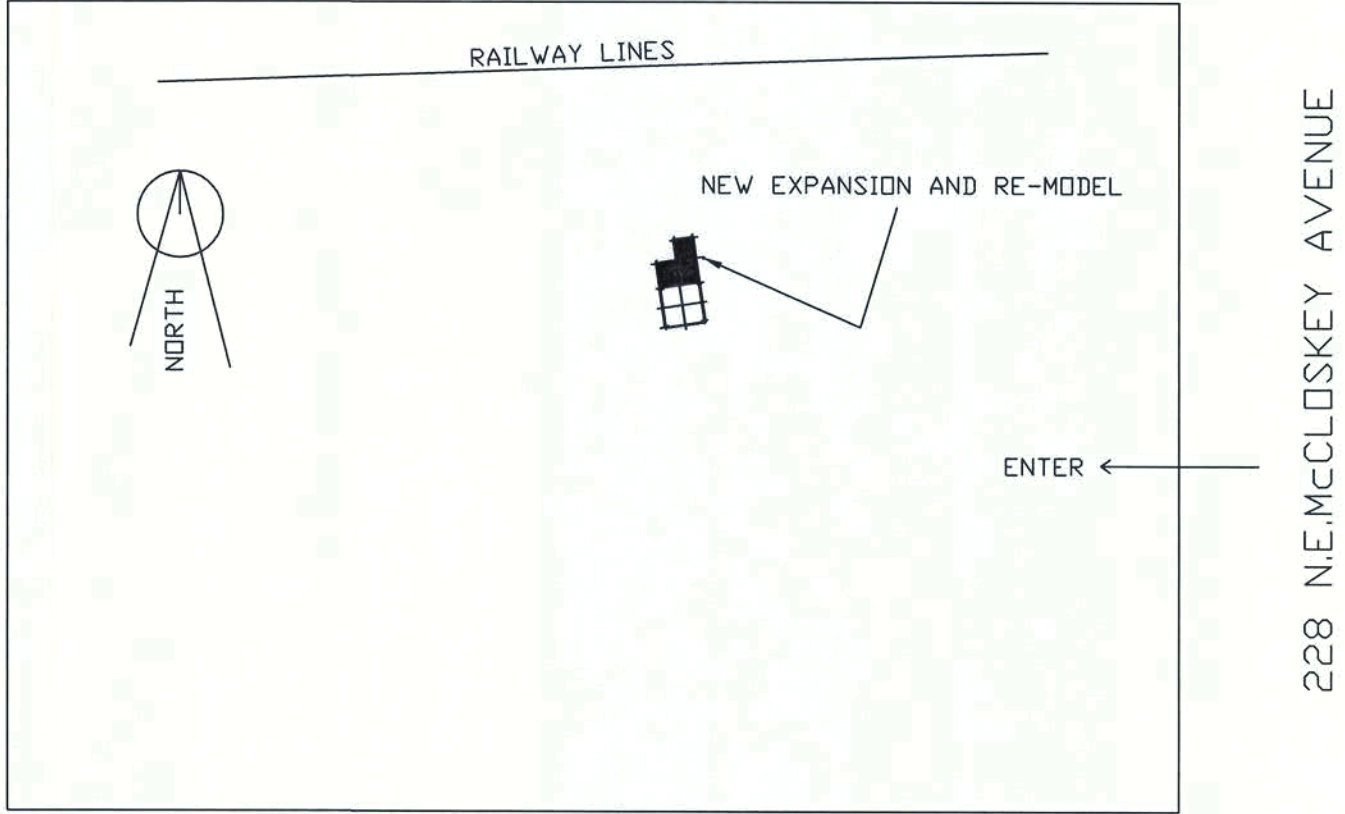
REV 1 21 OCT 09 MEZZ REMOVED

STRUCTURAL DESIGN ONLY, BY OR UNDER
THE DIRECT SUPERVISION OF R.H. WILSON, P.E.
R. H. WILSON AND ASSOCIATES
RONALD H. WILSON P.E. LIC. # 9710
CERTIFICATE OF AUTHORIZATION 8272

I RON WILSON, P.E., LISC. 9710 DO HEREBY CERTIFY THAT
THESE CONSTRUCTION DRAWINGS MEET OR EXCEED THE
110 MPH WIND LOAD REQUIREMENTS
OF FBC 2007 W/ 2009 SUPPLEMENT

ENGINEERING SIGN OFF

R.H. Wilson



HIGHWAY 90

SAVAGE SERVICES CORPORATION
228 NE McCLOSKEY AVENUE
LAKE CITY
FLORIDA. 32056
TAX ID # 36-3S-17-07463-007

SITE PLAN

SCALE AS NOTED
DRAWN BY
**ALAN
TAYLOR**
4-20-2009

PLANT REMODEL AND EXPANSION
FOR
SAVAGE SERVICES CORPORATION
228 NE McCLOSKEY AVENUE
LAKE CITY
FLORIDA 32056

SHEET

5

ELIZABETHAN DEVELOPMENT INC
STATE CERTIFIED GENERAL CONTRACTORS CGC 012313

ELIZABETHAN DEVELOPMENT INC 3393 CYPRESS GARDENS RD, WINTER HAVEN 863 294 6749 FAX 863 299 5552
R. H. WILSON & ASSOCIATES P.O. BOX 915260 LONGWOOD FL 32791-5260 (407) 682-4052 (407) 682-3841 FX

MODEL
XX

REV. DATE DESCRIPTION

SITE PLAN & DETAILS