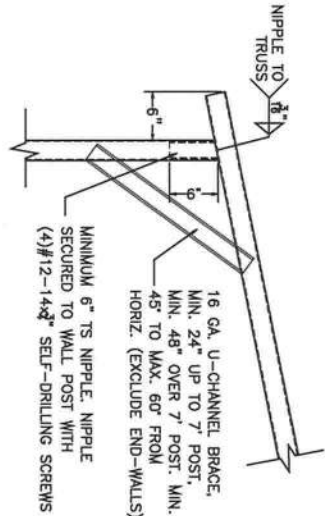
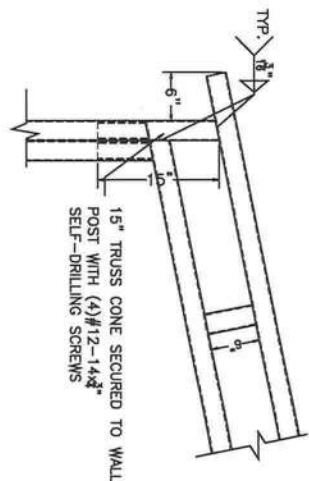


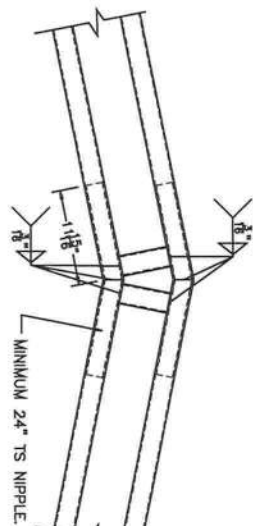
BOW RAFTER TO POST
CONNECTION DETAIL



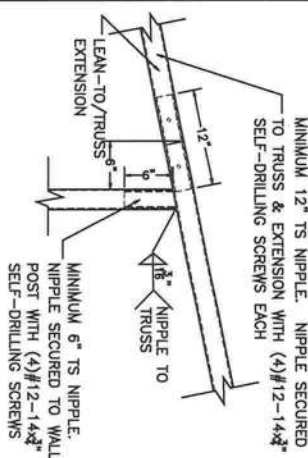
BOX EAVE RAFTER TO
POST CONNECTION DETAIL



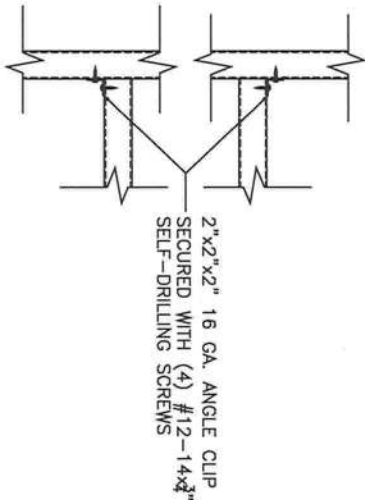
40' BOX EAVE RAFTER TO
POST CONNECTION DETAIL



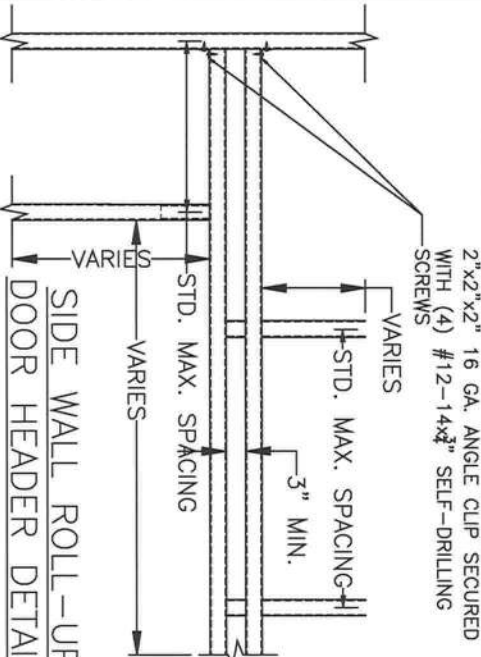
TRUSSED RAFTER
CONNECTION DETAIL



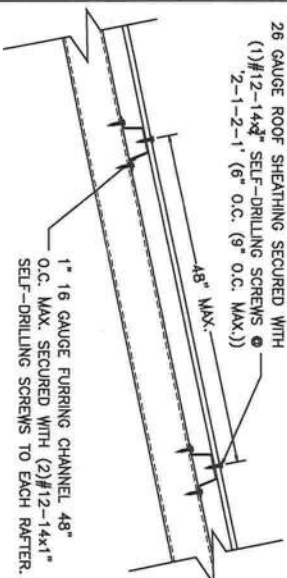
LEAN-TO TO TRUSS
CONNECTION



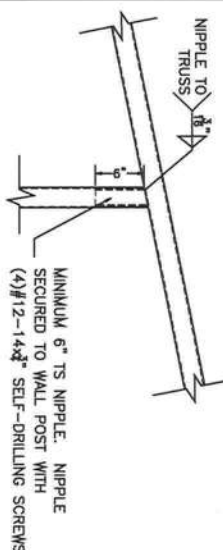
NON-STRUCTURAL HEADER OR
WINDOW RAIL TO POST DETAIL



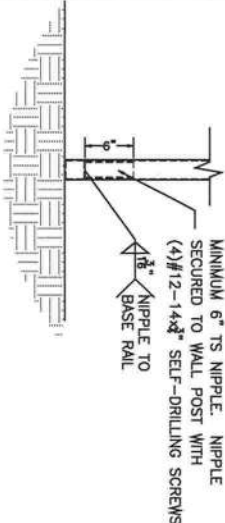
SIDE WALL ROLL-UP
DOOR HEADER DETAIL



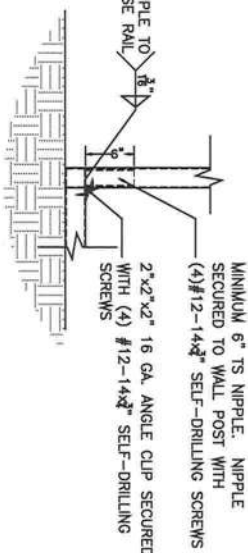
ROOF PANEL CONNECTION
VERTICAL SHEATHING OPTION



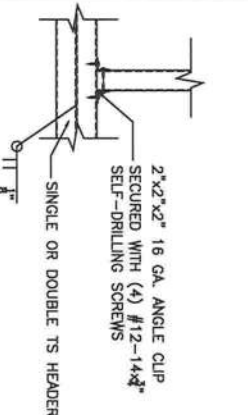
POST TO TRUSS
CONNECTION



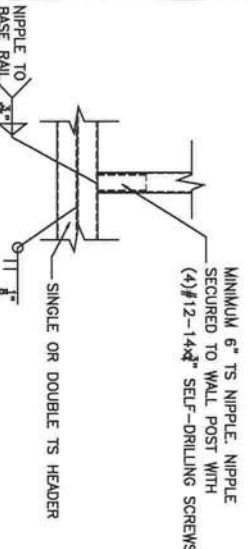
POST TO BASE RAIL
CONNECTION



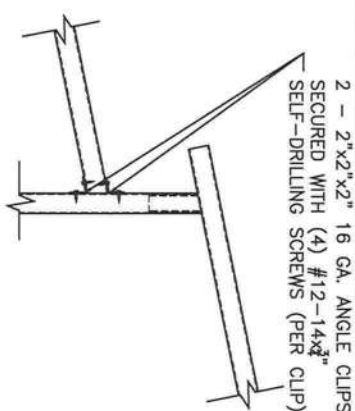
END POST TO BASE RAIL
CONNECTION



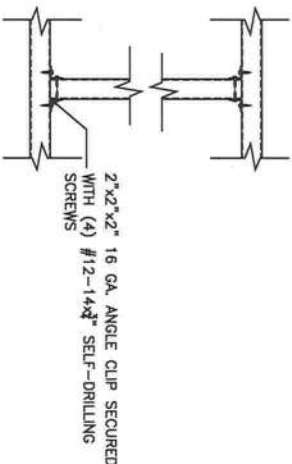
HEADER CONNECTION
DETAIL OPTION 1



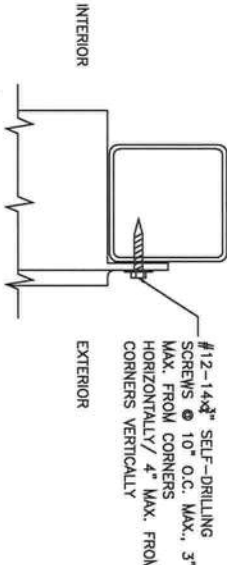
HEADER CONNECTION DETAIL
OPTION 2



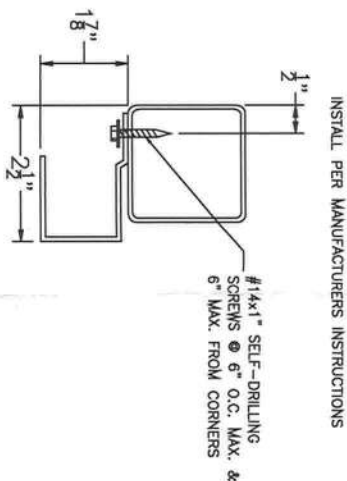
LEAN-TO TO TRUSS
CONNECTION



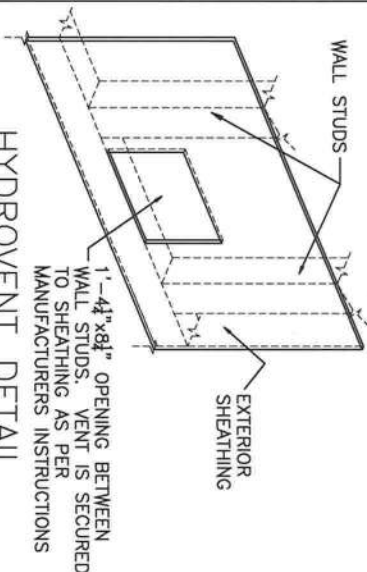
INTERMEDIATE POST TO
HEADER/BASE RAIL/OR
WINDOW RAIL DETAIL



DOOR FRAME TO POST
CONNECTION



ROLL-UP DOOR TO
POST CONNECTION



HYDROVENT DETAIL
(OPTIONAL)



CODE INFORMATION

CODE VERSION	FEB 2017 6th Edition, ASCE-7-10
MANUFACTURER	CARPORTS ANYWHERE
BUILDING TYPE	UTILITY STRUCTURE
CONSTRUCTION TYPE	II-B
RISK CATEGORY	1
FIRE PROTECTION	NONE
FIRE SUPPRESSION SYSTEM	NONE
OCCUPANCY	UTILITY
BASIC WIND SPEED	Vw 120-180mph
EXPOSURE	C
INTERNAL PRESSURE COEFFICIENT	+/- 0.18
IMPORTANCE FACTOR	1.0
ROOF DEAD LOAD	10PSF
ROOF LIVE LOAD	20PSF OR 300LB POINT LOAD
FLOOR DEAD LOAD	10PSF
FLOOR LIVE LOAD	50PSF
R _w RATING OF WALLS, FLOOR, ROOF	N/A
MODULES PER BUILDING	1
HURRICANE PROTECTION USAGE	NO
HURRICANE SHELTER USAGE	NO
SQUARE FOOTAGE	VARIES

REVISIONS

REV	DESCRIPTION	DATE	BY

Drawn By:	MTB
Date:	4/22/20
Location:	FLORIDA
Model#:	ENCLOSED GENERIC ENGINEERING
GENERAL NOTES	
1. THIS BUILDING IS EXEMPT FROM THE FBC ENERGY CONSERVATION CODE PER SECTION C101.4.2.	
2. ALL STEEL TUBING SHALL BE 30 KSI STEEL.	
3. PLUMBING, ELECTRICAL, INGRESS/EGRESS, PROPERTY SET-BACKS, AND/OR OTHER LOCAL CODE REQUIREMENTS ARE THE RESPONSIBILITY OF THE OWNER.	
4. ROOF AND WALL SHEATHING SECURED WITH #12-14x1\"/>	
5. FIELD FRAMING CONNECTIONS SECURED WITH WASHERS @ 6\"/>	
6. ALL SHOP FRAMING CONNECTIONS ARE TO BE WELDED. NO WELDING ON-SITE. ALL WELDING DONE IN SHOP.	
7. CONCRETE EXPANSION ANCHORS ARE TO BE MINIMUM 1/2\"/>	
8. 12 OR 14GA. FRAMING IS 2.5\"/>	

6/20/20

Matthew T. Baldwin P.E.
Florida License #64608



CODE INFORMATION

CODE VERSION	FBC 2017 8th Edition, ASCE-7-10
MANUFACTURER	CARPORTS ANYWHERE
BUILDING TYPE	UTILITY STRUCTURE
CONSTRUCTION TYPE	II-B
RISK CATEGORY	1
FIRE PROTECTION	NONE
FIRE SUPPRESSION SYSTEM	NONE
OCCUPANCY	UTILITY U
BASIC WIND SPEED	V ₅₀ : 120-160mph
EXPOSURE	C
ENCLOSURE	ENCLOSED
INTERNAL PRESSURE COEFFICIENT	+/- 0.18
IMPORTANCE FACTOR	1.0
ROOF DEAD LOAD	10PSF
ROOF LIVE LOAD	20PSF OR 300lb POINT LOAD
FLOOR DEAD LOAD	10PSF
FLOOR LIVE LOAD	50PSF
R _r RATING OF WALLS, FLOOR, ROOF	N/A
MODULES PER BUILDING	1
HURRICANE PROTECTION USAGE	NO
HURRICANE SHELTER USAGE	NO
SQUARE FOOTAGE	VARIES

REVISIONS

REV	DESCRIPTION	DATE	BY

Drawn By: MTB

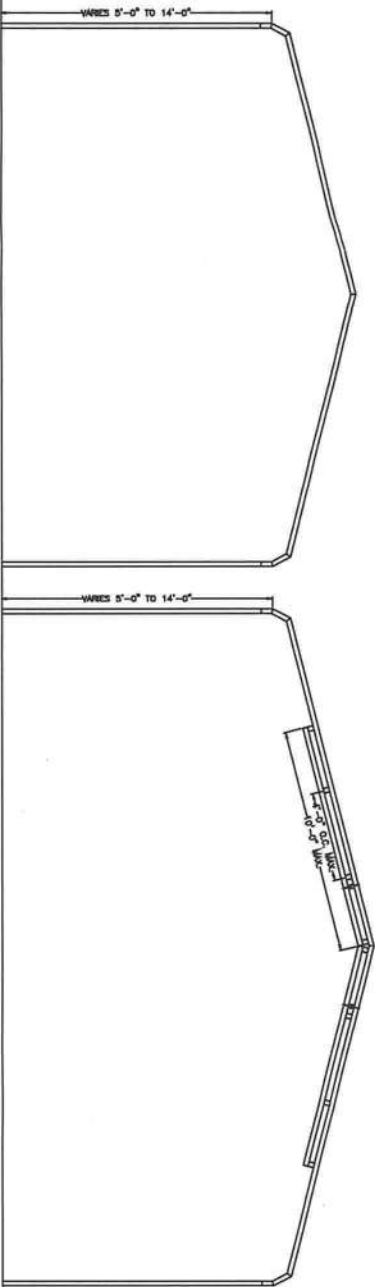
Date: 4/22/20

Location: FLORIDA

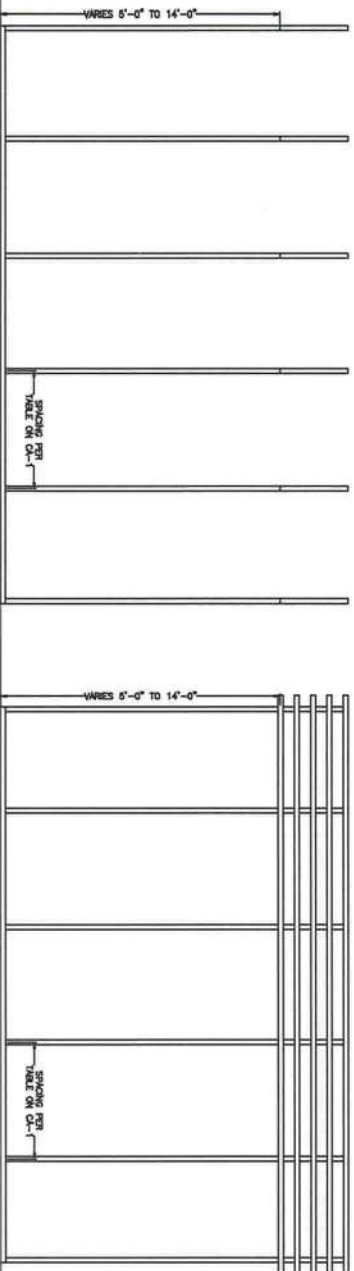
Model#: ENCLOSED GENERIC ENGINEERING

GENERAL NOTES

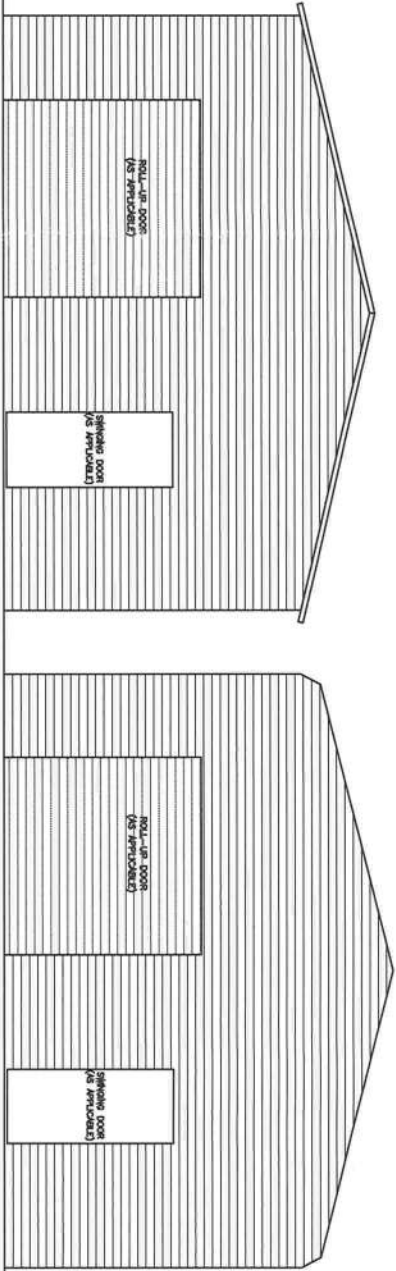
1. THIS BUILDING IS EXEMPT FROM THE FBC ENERGY CONSERVATION CODE PER SECTION C101.4.2.
2. ALL STEEL TUBING SHALL BE 60 KSI STEEL.
3. PLUMBING, ELECTRICAL, INGRESS/EGRESS, PROPERTY SET-BACKS, AND/OR OTHER LOCAL CODE REQUIREMENTS ARE THE RESPONSIBILITY OF THE OWNER.
4. ROOF AND WALL SHEETING SECURED WITH 1/2" 14x1" SELF-DRILLING SCREWS WITH SEAL WASHERS @ 8" O.C. MAX.
5. FIELD FRAMING CONNECTIONS SECURED WITH #12-14x3/4" SELF-DRILLING SCREWS.
6. ALL SHOP FRAMING CONNECTIONS ARE TO BE WELDED. NO WELDING ON-SITE. ALL WELDING DONE IN SHOP.
7. CONCRETE EXPANSIONS ANCHORS ARE TO BE MINIMUM 1/2"x3" 2,500LB TENSILE STRENGTH.
8. 12 OR 14GA. FRAMING IS 2.5"x2.5" TUBE STEEL. NIPPLES ARE 2.25"x2.25" TUBE STEEL.



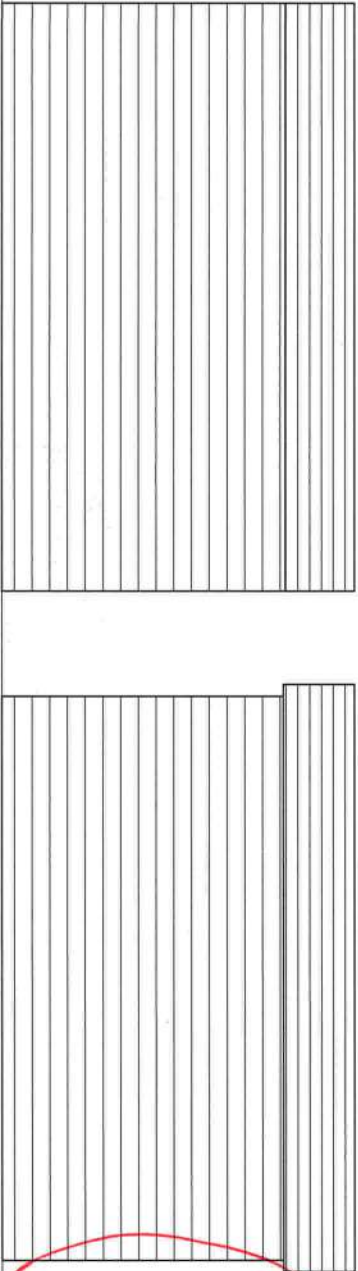
TYPICAL POST/TRUSS FRAMING SECTION - BOX EAVE, UP TO & INCLUDING 24' WIDE



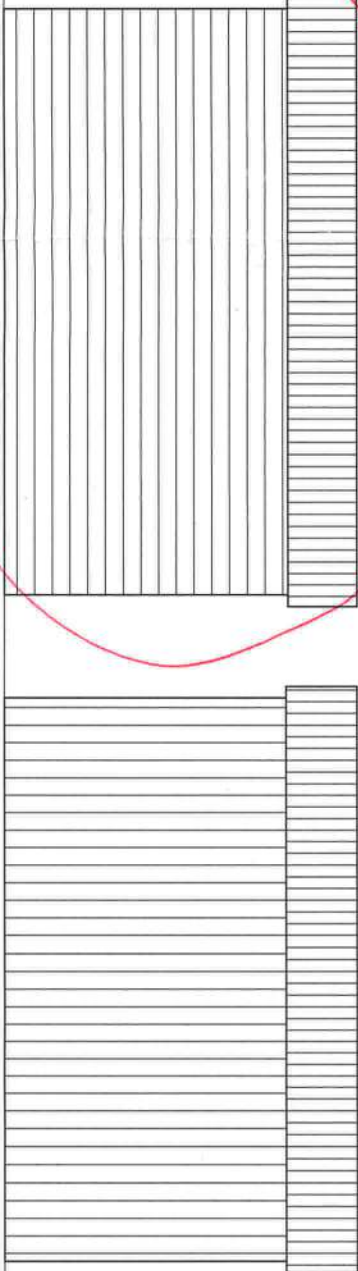
TYPICAL SIDE WALL FRAMING - BOX EAVE/BOW FRAME, HORIZONTAL, ROOF



TYPICAL SIDE WALL FRAMING - BOX EAVE, VERTICAL, ROOF



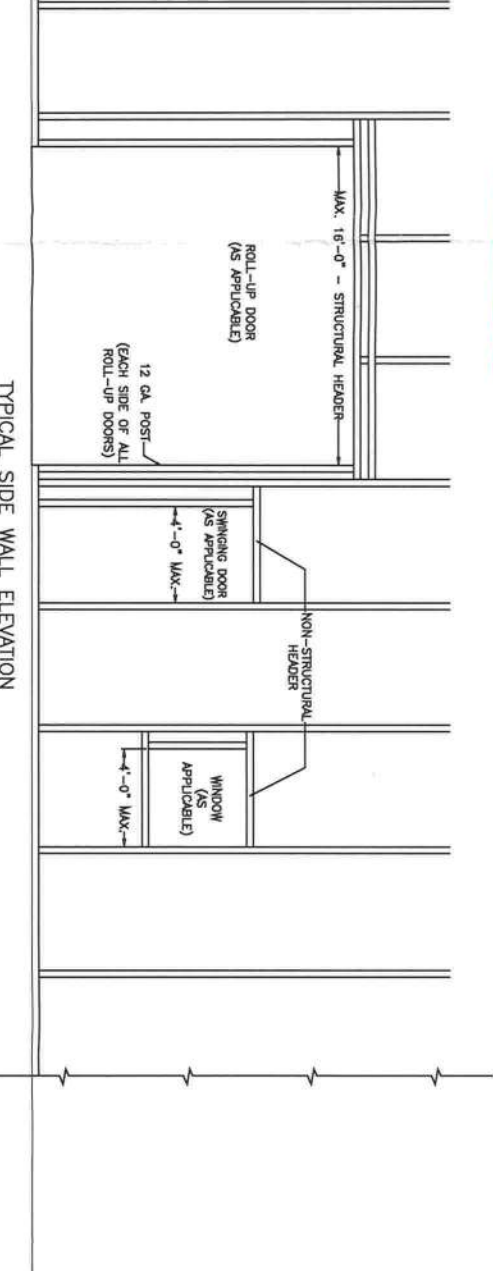
TYPICAL SIDE WALL ELEVATION - BOX EAVE, HORIZONTAL WALLS & ROOF



TYPICAL SIDE WALL ELEVATION - BOX EAVE, HORIZONTAL WALLS (OR LAP) & ROOF



TYPICAL END ELEVATION



TYPICAL SIDE WALL ELEVATION

LAYOUT VIEWS

6/20/20

Matthew T. Baldwin P.E.
Florida License #64608