

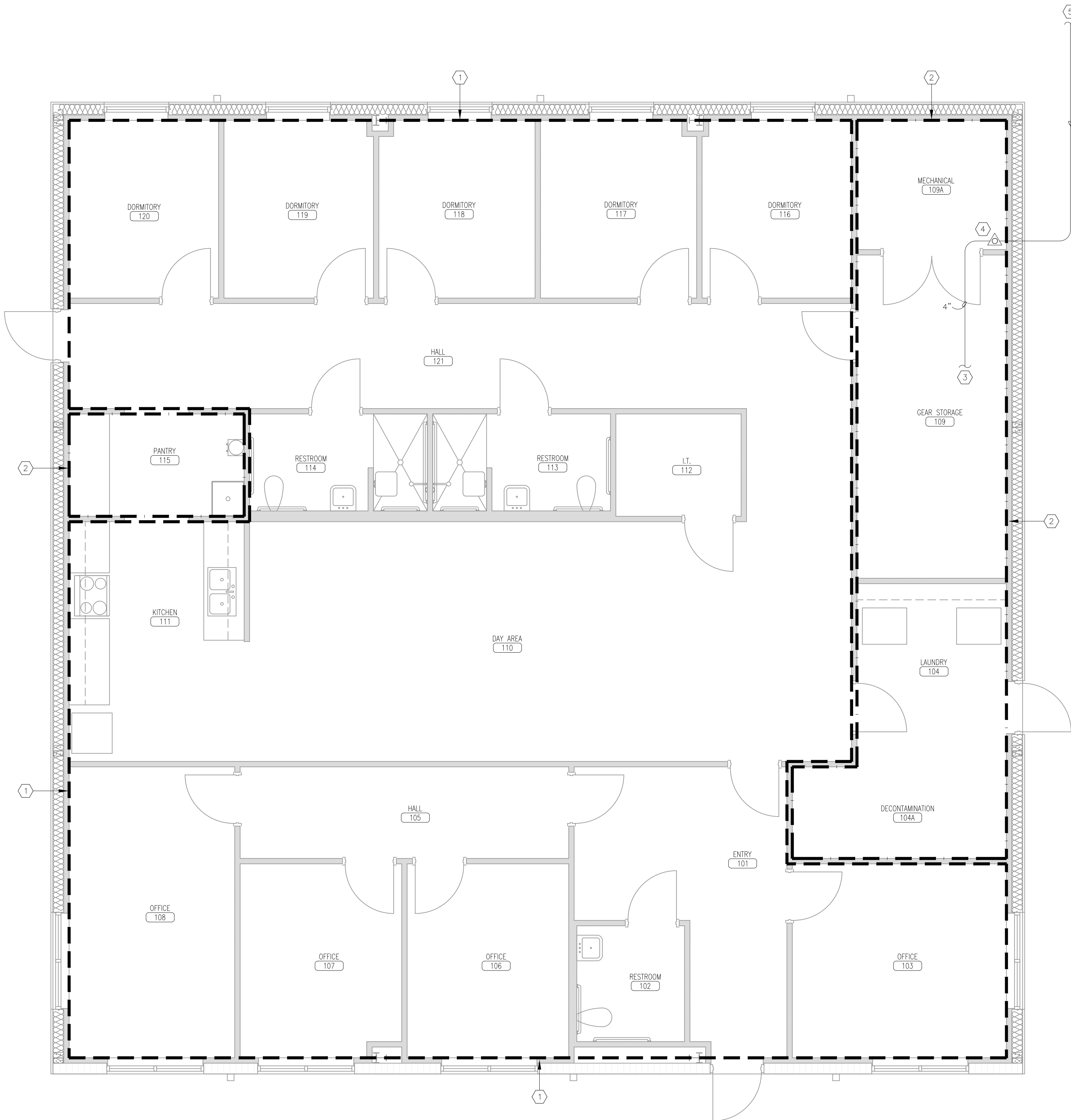
COBURN AND ASSOCIATES

CONSULTING ENGINEERS
P.O. BOX 577
HIGH SPRINGS, FLORIDA 32655-0577
(386)454-3748
FLORIDA LICENSED ENGINEERS EB 0003687

CA JOB NUMBER 2390

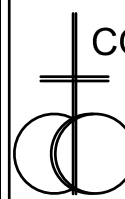
1. ALL PIPING PENETRATIONS THROUGH RATED WALLS AND/OR FLOOR SLABS SHALL BE INSTALLED PER THE APPROPRIATE U.L. RATING FOR THE WALL / FLOOR CONSTRUCTION TYPE AND THE WALL / FLOOR RATING.

- ① PROVIDE A HYDRAULICALLY DESIGNED AUTOMATIC SPRINKLER SYSTEM WITH A LIGHT HAZARD COVERAGE OF 0.10 GPM/SF OVER 1500 SF PER NFPA 13.
- ② PROVIDE A HYDRAULICALLY DESIGNED AUTOMATIC SPRINKLER SYSTEM WITH AN ORDINARY HAZARD GROUP 1 COVERAGE OF 0.15 GPM/SF OVER 1500 SF PER NFPA 13.
- ③ CONTINUATION TO FIRE PROTECTION SYSTEM AS DEVELOPED BY DELEGATED DESIGN ENGINEER.
- ④ NEW FIRE RISER WITH FLOW SWITCH, CHECK VALVE, TAMPER SWITCH, AND INSPECTOR TEST DRAIN.
- ⑤ REFER TO CIVIL PLAN FOR FIRE MAIN CONTINUATION TO NEW BACKFLOW PREVENTOR.
- ⑥ PROVIDE FIRE SPRINKLER HEAD AT BOTTOM OF ELEVATOR PIT.
- ⑦ FIRE DEPARTMENT CONNECTION.



FIRE PROTECTION FLOOR PLAN

SCALE: 1/4" = 1'-0'



BURN AND ASSOCIATES
CONSULTING ENGINEERS
P.O. BOX 577
HIGH SPRINGS, FLORIDA 32655-0577
(386)454-3748
FLORIDA LICENSED ENGINEERS EB 0003687
CA JOB NUMBER 2391