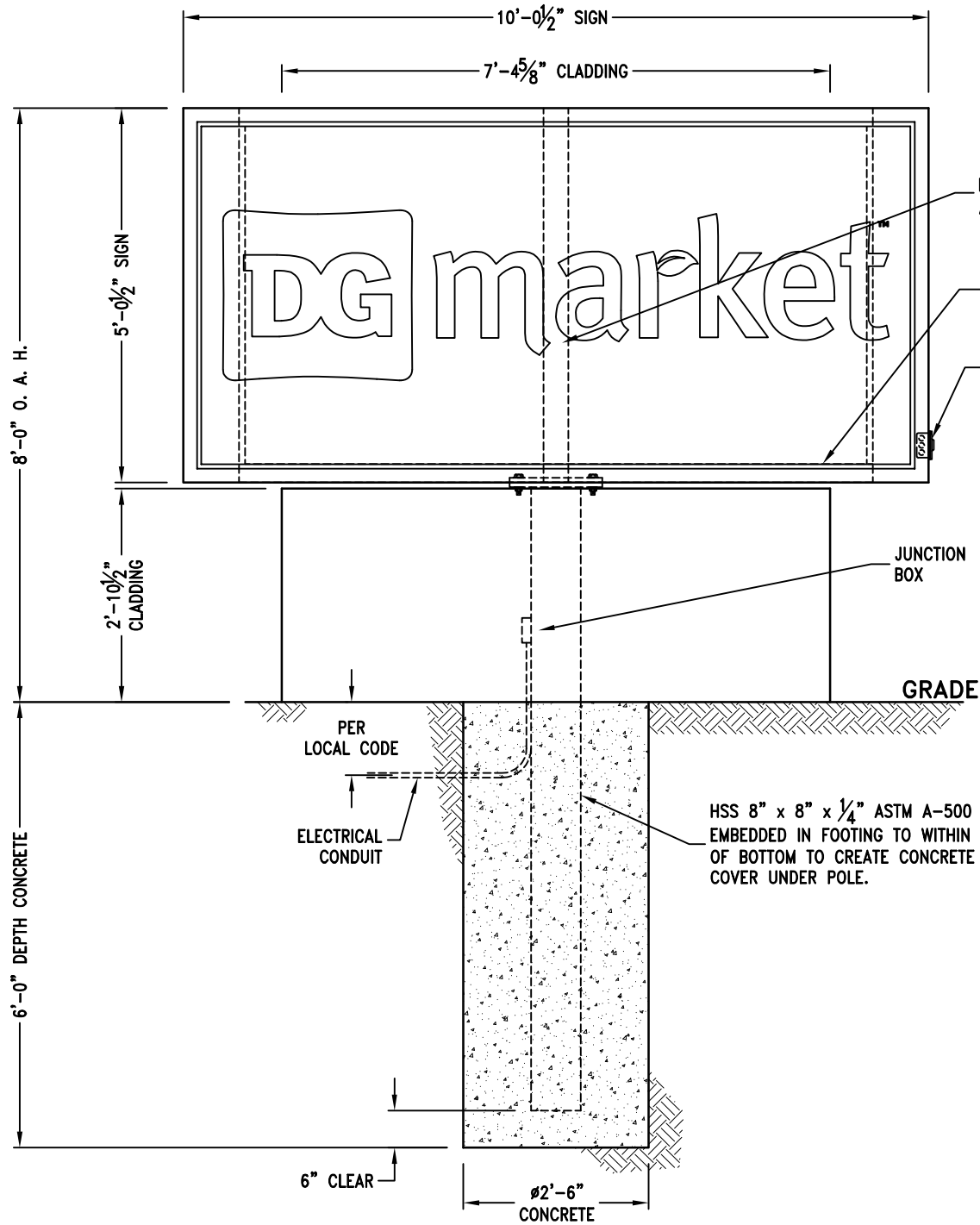
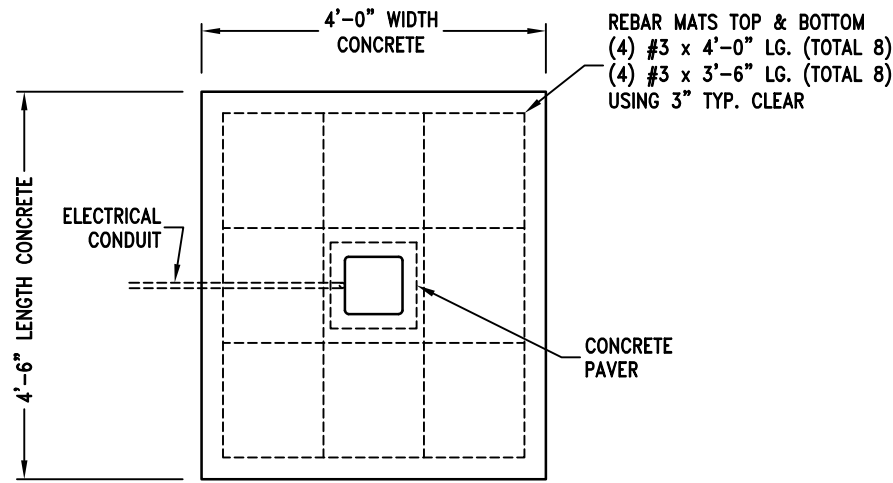


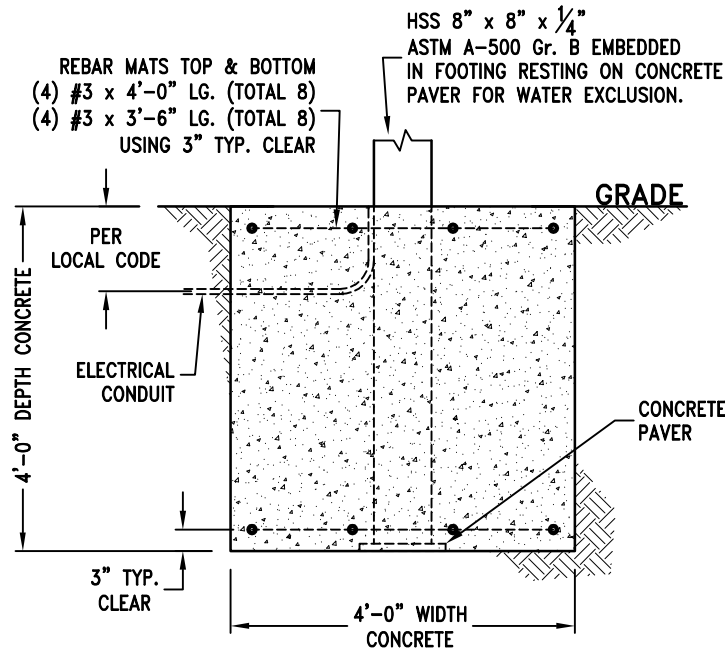
PLAN VIEW-CAISSON FOOTING
QTY. CONCRETE: 1.1 CU. YDS.



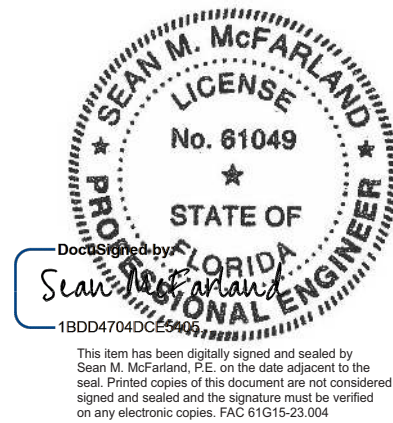
ELEVATION VIEW-CAISSON FOOTING



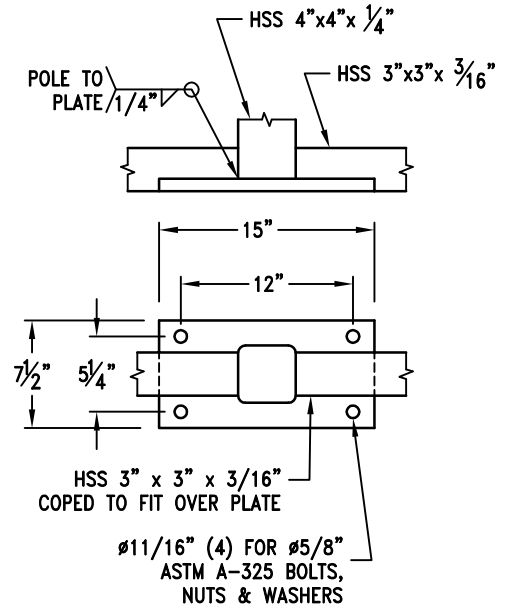
PLAN VIEW-SPREAD FOOTING
QTY. CONCRETE: 2.7 CU. YDS.



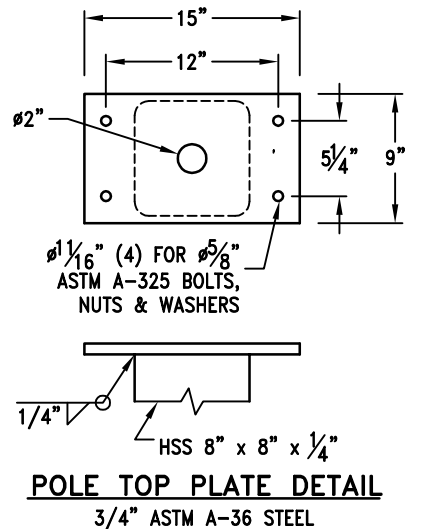
ELEVATION VIEW-SPREAD FOOTING



Sean M.
McFarland
2024.06.27
16:52:09 -04'00'
2024.002.20857



SIGN MOUNTING PLATE DETAIL
3/4" ASTM A-36 STEEL



FOUNDATION DESIGN NOTES:

1. Concrete shall have a minimum compressive strength of 3000 PSI at 28 days.
2. Reinforcing steel shall be ASTM A-615 Gr. 60.
3. Footings designed using soil bearing forces of 1500 PSF Static, 2000 PSF Dynamic and 150 PSF per foot Lateral. If these soil conditions do not exist, it is the Erector's responsibility to have a new base designed for the existing soil condition by a Licensed Engineer.

DESIGN WIND LOAD:

Based on the 2023 Florida Building Code, 8th Edition (ASCE 7-22) using Risk Category II, Exposure C and 150 mph wind speed.

SITE: Dollar General Market
Store No. 25861
8255 S.W. US Highway 27
Fort White, Florida 32038

A	24 Jun 24	RELEASED FOR PERMITTING	J. HOGAN
REV	DATE	DESCRIPTION	APPROVED
Robert-James & Associates, Inc. 12255 West 187th Street, Mokena Illinois 60448-9737 phone: 708-479-8385 fax: 708-479-8395 email: rja37@comcast.net			
TITLE 8'-0" OAH DIRECT BURY SINGLE POLE WITH CLADDING FOR 5'-0 1/2" x 10'-0 1/2" ID SIGN			
DRAWN BY	W. CARTER	DATE 24 Jun 24	SCALE NONE
CHECKED BY	J. HOGAN	DATE 24 Jun 24	DRAWING NUMBER 2406203
		SHEET 1 OF 1	REV. A