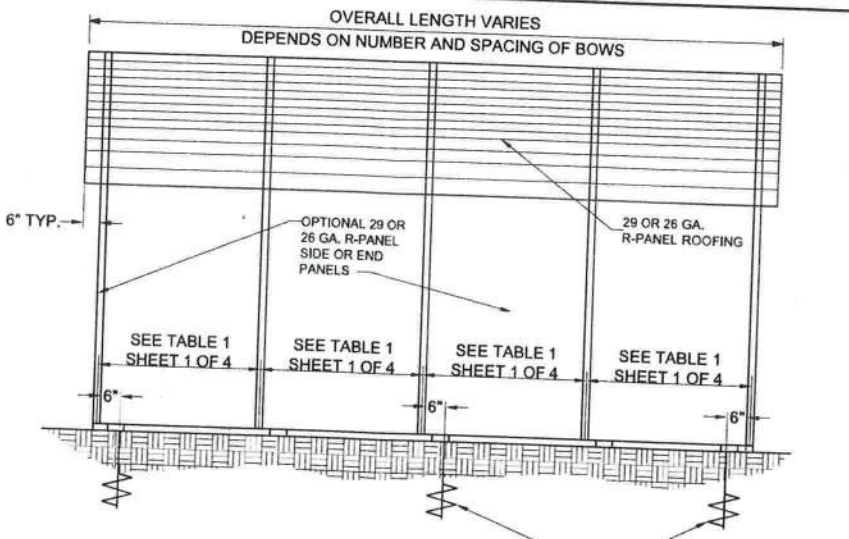


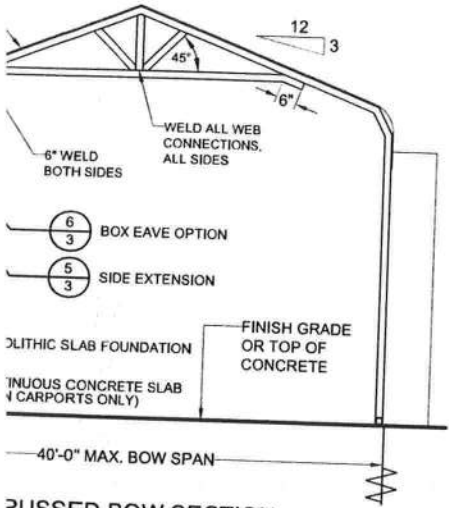
TYPICAL BOW SECTION

Not To Scale
ANCHORS NOT REQUIRED WITH CONCRETE SLAB CONSTRUCTION. (SEE DETAIL 1 OR 2, SHEET 3 OF 4)



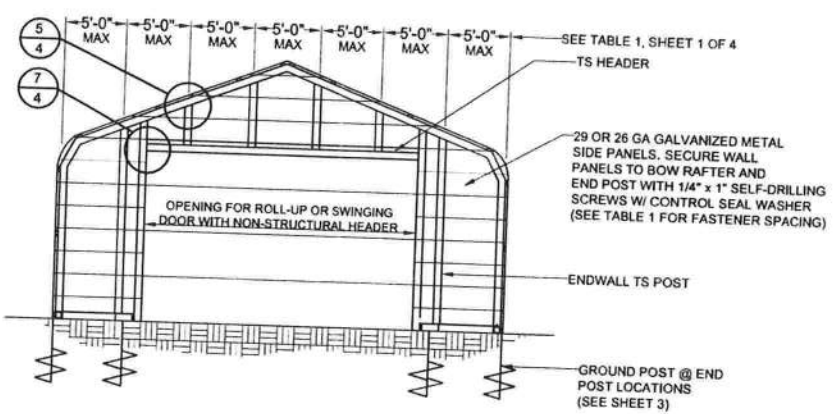
SIDE ELEVATION

Not To Scale
GROUND ANCHORS @ EACH END BOW POST AND EVERY OTHER INTERIOR BOW POST LOCATION (SEE DETAIL 3, SHEET 3 OF 4)



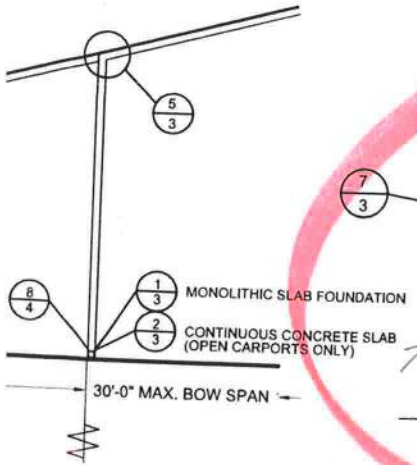
RUSSETED BOW SECTION

Not To Scale
ANCHORS NOT REQUIRED WITH CONCRETE SLAB CONSTRUCTION. (SEE DETAIL 1 OR 2, SHEET 3 OF 4)

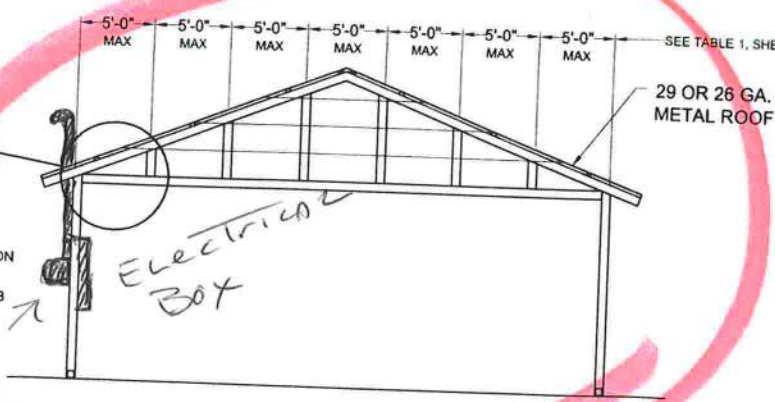


END WALL OPENING

Not To Scale
ANCHORS NOT REQUIRED WITH CONCRETE SLAB CONSTRUCTION. (SEE DETAIL 1 OR 2, SHEET 3 OF 4)
ANCHORS NOT REQUIRED WITH CONCRETE SLAB CONSTRUCTION. (SEE DETAIL 1 OR 2, SHEET 3 OF 4)

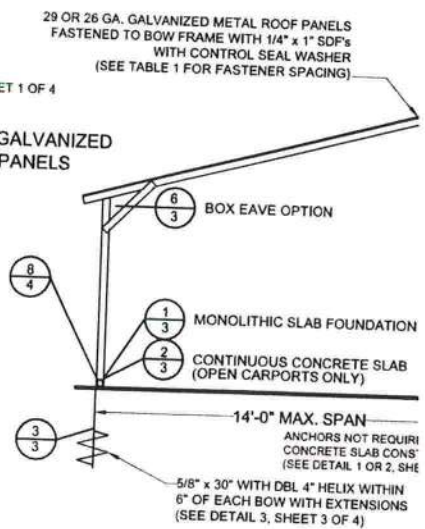


SECTION



GABLED OPEN END WALL SECTION

Not To Scale



TYPICAL FREESTANDING LE

Not To Scale

**METAL CARPORT INSTALLATION PLANS AND DETAILS
AND
FRAMING AND FASTENER SPECIFICATIONS**

FOR CONSTRUCTION IN THE
STATE OF FLORIDA

PREPARED FOR:
CAROLINA CARPORTS, INC.
P.O. BOX 1263
DOBSON, NORTH CAROLINA 27017

PREPARED BY:
BECHTOL ENGINEERING AND TESTING, INC.
605 WEST NEW YORK AVENUE
DELAND, FLORIDA 32720
Certificate of Authorization No. 00005492



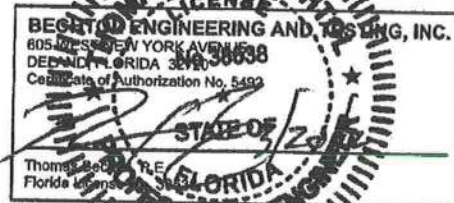
WINDOW AND DOOR NOTE

EXTERIOR WINDOWS AND GLASS DOORS SHALL BE TESTED BY AN APPROVED INDEPENDENT TESTING LABORATORY, AND BEAR AN AAMA OR WDMA OR OTHER APPROVED LABEL IDENTIFYING THE MANUFACTURER, PERFORMANCE CHARACTERISTICS AND APPROVED PRODUCT EVALUATION ENTITY TO INDICATE COMPLIANCE WITH THE REQUIREMENTS OF THE FOLLOWING SPECIFICATION:

ANSI/AAMA/NWDA 101/IS2 2/97

THE CONSTRUCTION SHALL BE TESTED IN ACCORDANCE WITH ASTM E 330, STANDARD TEST METHODS FOR STRUCTURAL PERFORMANCE OF EXTERIOR WINDOWS, CURTAIN WALLS, AND DOORS BY UNIFORM STATIC AIR PRESSURE.

THIS IS TO CERTIFY THAT THE CALCULATIONS AND SPECIFICATIONS HEREIN HAVE BEEN PREPARED BY THE UNDERSIGNED PROFESSIONAL ENGINEER, AND ARE IN ACCORDANCE WITH THE REQUIREMENTS OF SECTION 1609 OF THE 2010 FLORIDA BUILDING CODE. THE PLANS ARE VALID UNTIL THE NEXT REVISION OF THE FLORIDA BUILDING CODE.



CAROLINA CARPORTS, INC.



**BECHTOL ENGINEERING
AND TESTING, Inc.**

CONSULTING GEOTECHNICAL, ENVIRONMENTAL, AND MATERIALS TESTING ENGINEERS
Certificate of Authorization No. 00005492

FIELD:	DATE:
DRAWN: RR	03-16-12
CHECKED: JP	SCALE: NTS
APPROVED: TB	PRICE NO: 06175
	SHEET 1 OF 4

TABLE 1
BOW/RAFTER FRAME, END POST, GROUND ANCHOR AND PANEL FASTENER SPACING SPECIFICATIONS

RISK CATEGORY	WIND EXPOSURE CATEGORY	ULTIMATE WIND SPEED (MPH)	MAXIMUM BOW AND END POST SPACING (FEET)	AVERAGE FASTENER SPACING ON-CENTERS ALONG RAFTERS OR PURLINS, AND POSTS (INCHES)	
				INTERIOR BOWS	END BOWS
I or II	B, C, or D	115 TO 150	5.0	6	6
		151 TO 180	4.0	6	6

NOTES: 1. Specifications applicable to 26 gauge metal panels fastened directly to 12 or 14 gauge steel tube bow frames.
2. Fasteners consist of 1/4"-14X1" self-drilling screws with control seal washer.
3. Specifications applicable only for mean roof height of 20 feet or less, and roof slopes of 14° (3:12 pitch). Spacing requirements for other roof heights and/or slopes may vary.
4. Ground anchor requirements are 1 @ each corner and one every other interior bow/rafter post location, at a maximum of 10' O.C., and both sides of openings where base rail is absent.
5. Ground anchors are not required with concrete slab construction.

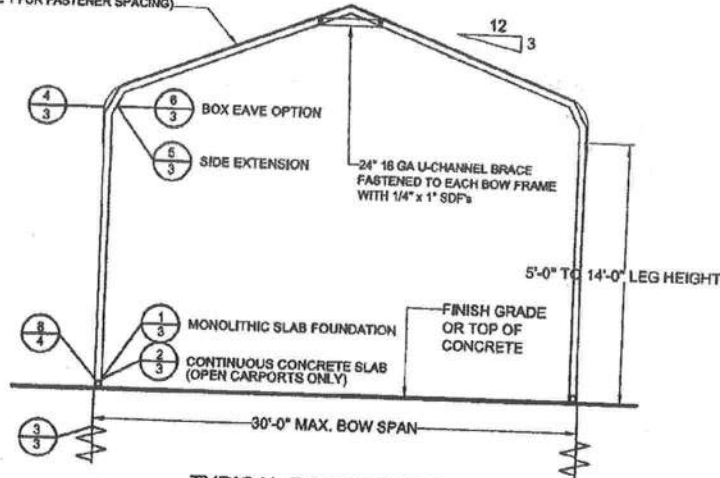
APPROVED PRODUCTS LIST

PRODUCT CATEGORY	SUB CATEGORY	MANUFACTURER	APPROVAL No. & DATE
STRUCTURAL COMPONENTS	ROOF DECK	CAROLINA CARPORTS, INC. 26 Gauge AG Panel	FL6596-R1 10/14/08
STRUCTURAL COMPONENTS	STRUCTURAL WALL	CAROLINA CARPORTS, INC. 26 Gauge AG Panel	FL6702-R1 10/14/08
EXTERIOR DOORS	SWINGING	ELIXIR INDUSTRIES GA. Model 402-14	FL1722-R3 10/13/09
EXTERIOR DOORS	ROLL-UP	ASTA INDUSTRIES INC. Model 203	FL8888-R2 12/09/09
WINDOWS	SINGLE HUNG	PHILLIPS PRODUCTS, INC. Model 23V	FL6228-R1 10/11/06

GENERAL NOTES:

1. ALL STEEL TUBING SHALL BE 50 KSI STEEL.
2. FASTEN METAL ROOF AND WALL PANELS TO FRAMING WITH 1/4" x 1" SELF DRILLING FASTENERS WITH CONTROL SEAL WASHER @ 6" O.C. AVERAGE. (SEE TABLE 1 FOR FASTENER SPACING SPECIFICATIONS)
3. ALL FIELD CONNECTIONS SHALL BE 1/4" x 1" SELF DRILLING SCREWS.
4. ALL SHOP CONNECTIONS SHALL BE WELDED.

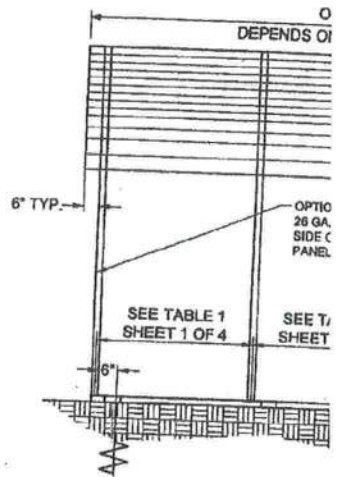
26 GA. GALVANIZED METAL ROOF PANELS
FASTENED TO BOW FRAME WITH 1/4" x 1" SDF's
WITH CONTROL SEAL WASHER.
(SEE TABLE 1 FOR FASTENER SPACING)



TYPICAL BOW SECTION

Not To Scale

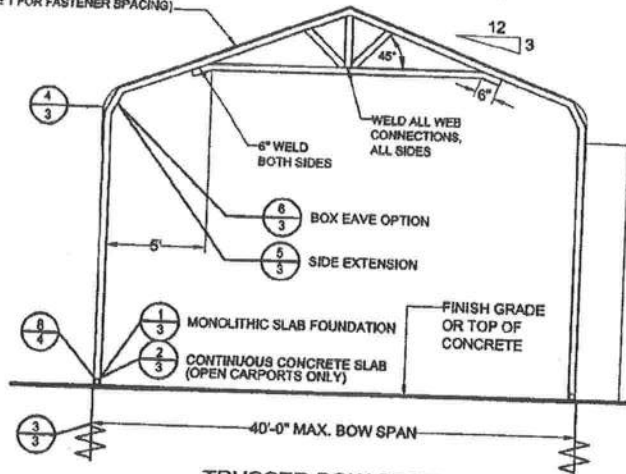
ANCHORS NOT REQUIRED WITH
CONCRETE SLAB CONSTRUCTION.
(SEE DETAIL 1 OR 2, SHEET 3 OF 4)



ANCHORS NOT REQUIRED WITH
CONCRETE SLAB CONSTRUCTION.
(SEE DETAIL 1 OR 2, SHEET 3 OF 4)

SI
Not

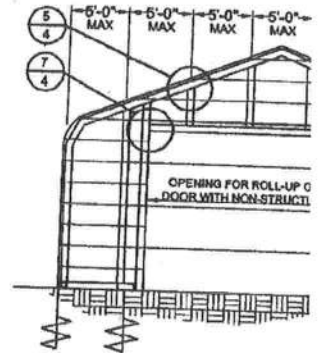
26 GA. GALVANIZED METAL ROOF PANELS
FASTENED TO RAFTER/BOW FRAME WITH
1/4" x 1" SDF's WITH CONTROL SEAL WASHER.
(SEE TABLE 1 FOR FASTENER SPACING)



TRUSSED BOW SECTION

Not To Scale

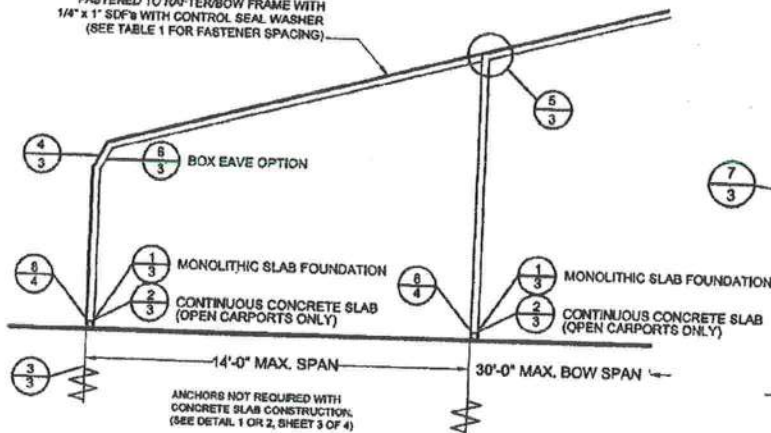
ANCHORS NOT REQUIRED WITH
CONCRETE SLAB CONSTRUCTION.
(SEE DETAIL 1 OR 2, SHEET 3 OF 4)



END WALL OPENING

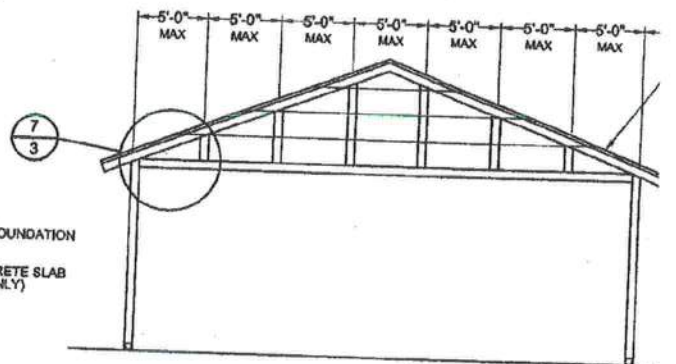
Not To Scale

26 GA. GALVANIZED METAL ROOF PANELS
FASTENED TO RAFTER/BOW FRAME WITH
1/4" x 1" SDF's WITH CONTROL SEAL WASHER.
(SEE TABLE 1 FOR FASTENER SPACING)



TYPICAL SIDE EXTENSION SECTION

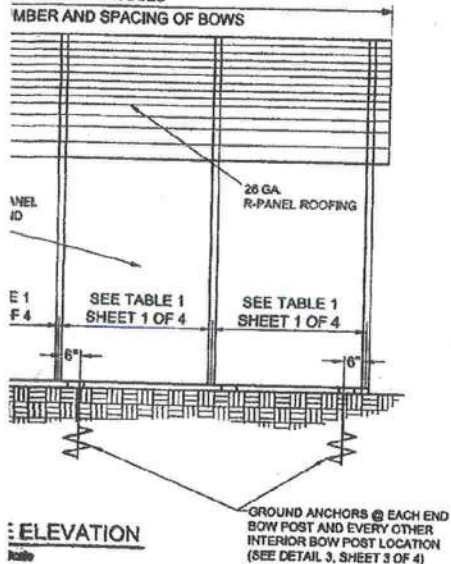
Not To Scale



GABLED OPEN END WALL SECTION

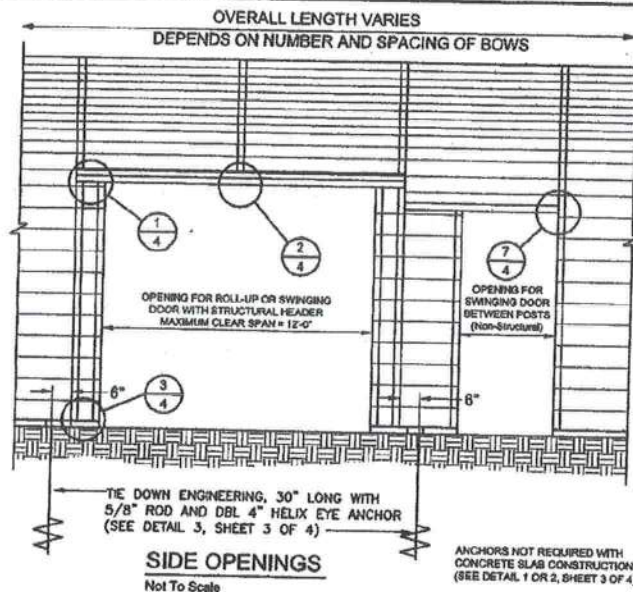
Not To Scale

NUMBER AND SPACING OF BOWS



ELEVATION

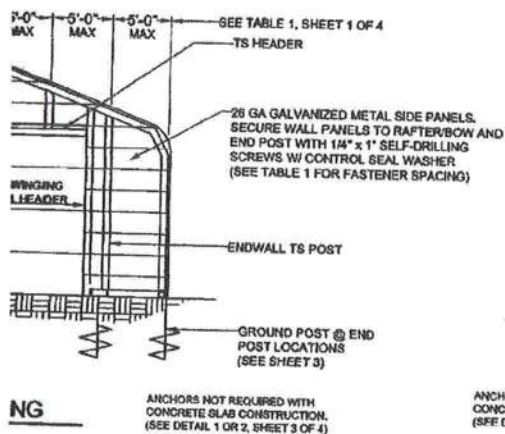
Acute



SIDE OPENINGS

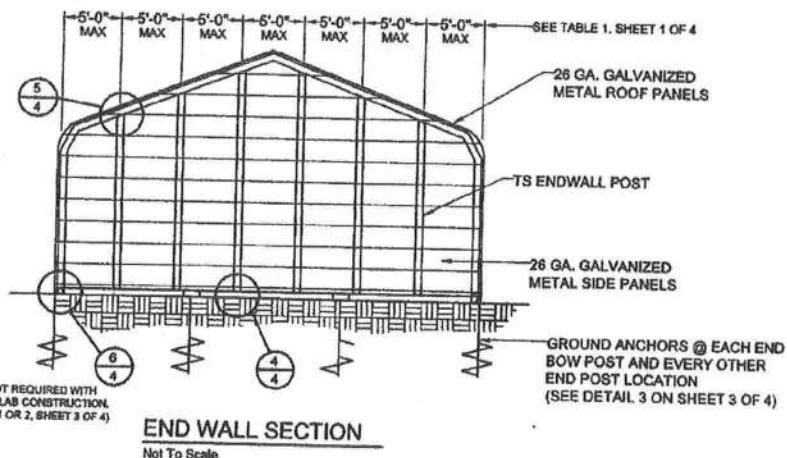
Not To Scale

ANCHORS NOT REQUIRED WITH
CONCRETE SLAB CONSTRUCTION.
(SEE DETAIL 1 OR 2, SHEET 3 OF 4)



NG

ANCHORS NOT REQUIRED WITH
CONCRETE SLAB CONSTRUCTION.
(SEE DETAIL 1 OR 2, SHEET 3 OF 4)

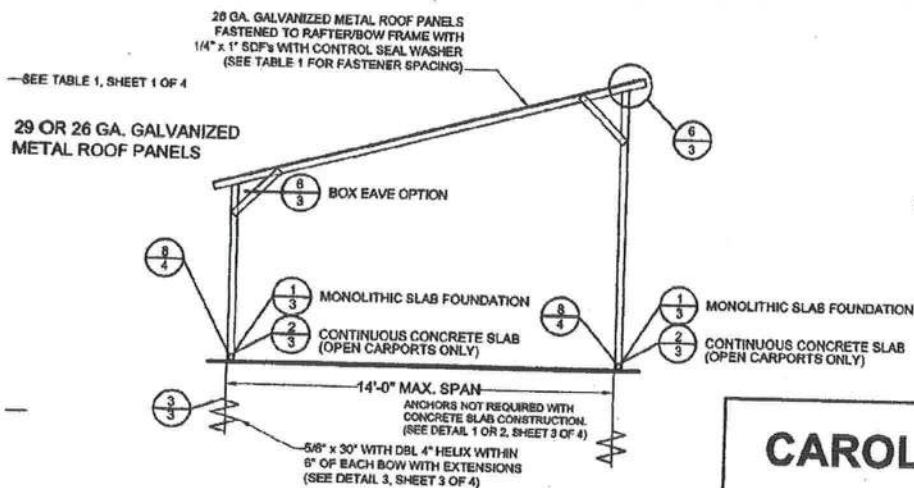


END WALL SECTION

Not To Scale

NOTE:

14 GA FRAMING IS 2-1/2" x 2-1/2" TUBE STEEL.
12 GA FRAMING IS 2-1/4" x 2-1/4" TUBE STEEL.
NIPPLES ARE 2-1/4" x 2-1/4" 12 GA T.S. FOR 14 GA FRAMING.
NIPPLES ARE 2" x 2" 12 GA T.S. FOR 12 GA FRAMING.



TYPICAL FREESTANDING LEAN-TO
Not To Scale

Not To Scale

BECHTEL ENGINEERING AND TESTING INC.
805 WEST NINEK AVENUE
DELAND, FLORIDA 32720
Certificate of Registration No. 5492
No. 38538
3/20/17
Thomas Bechtel, P.E.
Florida License No. 38538
STATE OF FLORIDA

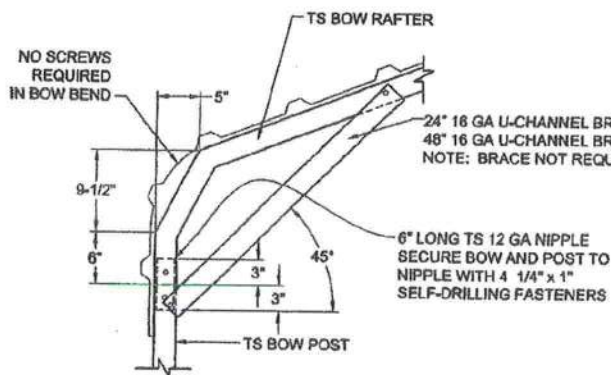
CAROLINA CARPORTS, INC.



**BECHTOL ENGINEERING
AND TESTING, Inc.**

CONSULTING GEOTECHNICAL, ENVIRONMENTAL, AND MATERIALS TESTING ENGINEERS
Certificate of Authorization No. 000004020

FIELD:	DATE: 03-16-12
DRAWN: RR	SCALE: NTS
CHECKED: JP	PROJ. NO: 08175
APPROVED: TB	SHEET 2 OF 4

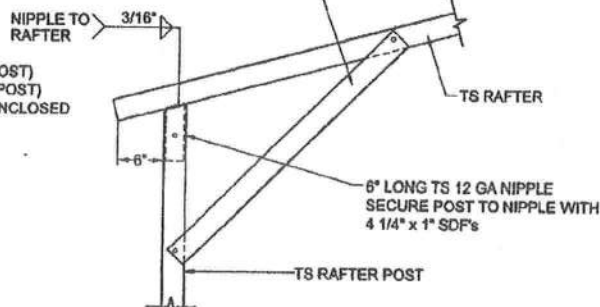


4

BOW/CORNER POST DETAIL

Not To Scale

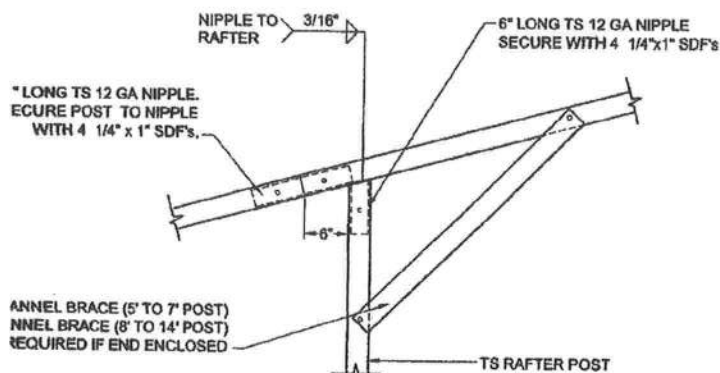
24" 16 GA U-CHANNEL BRACE (5' TO 7' POST)
48" 16 GA U-CHANNEL BRACE (8' TO 14' POST)
NOTE: BRACE NOT REQUIRED IF END ENCLOSED



6

BOX EAVE RAFTER/ CORNER POST DETAIL

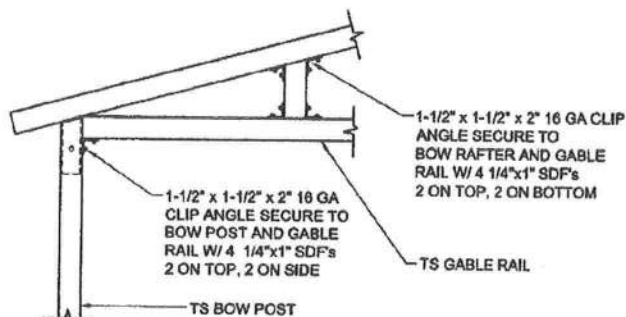
Not To Scale



5

SIDE EXTENSION RAFTER/ CORNER POST DETAIL

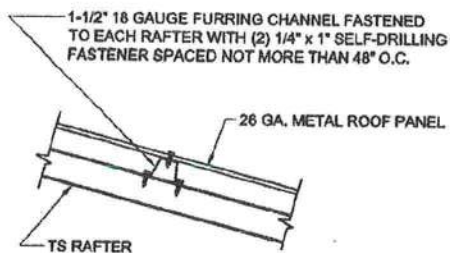
Not To Scale



7

GABLE RAIL TO RAFTER POST CONNECTION DETAIL

Not To Scale



ROOF PANEL ATTACHMENT

(ALTERNATE FOR VERTICAL ROOF PANELS)

Not To Scale

NOTE:
14 GA FRAMING IS 2-1/2" x 2-1/2" TUBE STEEL.
12 GA FRAMING IS 2-1/4" x 2-1/4" TUBE STEEL.
NIPPLES ARE 2-1/4" x 2-1/4" 12 GA T.S. FOR 14 GA FRAMING.
NIPPLES ARE 2" x 2" 12 GA T.S. FOR 12 GA FRAMING.



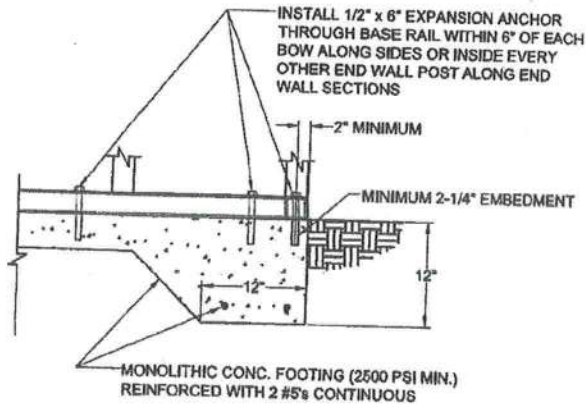
CAROLINA CARPORTS, INC.



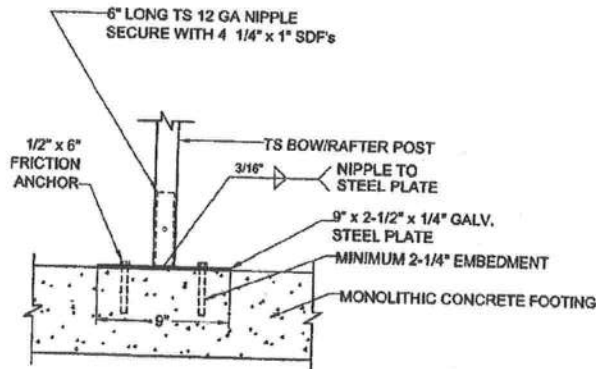
**BECHTOL ENGINEERING
AND TESTING, Inc.**

CONSULTING GEOTECHNICAL, ENVIRONMENTAL, AND MATERIALS TESTING ENGINEERS
Certificate of Authorization No. 5005482

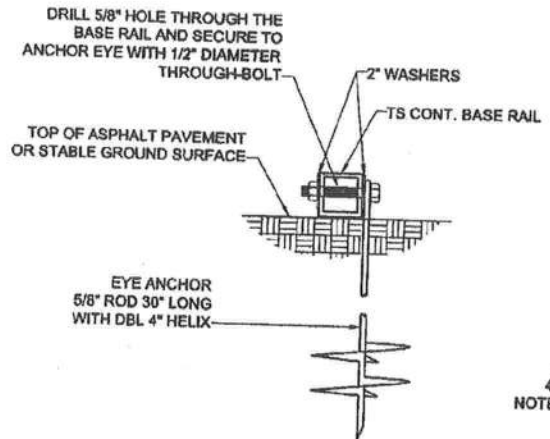
FILED:	DATE:	03-16-12
DRAWN: RR	SCALE:	NTS
CHECKED: JP	PROJ. NO.:	06175
APPROVED: TB		SHEET 3 OF 4



1 CONCRETE BASE RAIL ANCHORAGE
Not To Scale (OPTIONAL)



2 CONCRETE BASE RAIL ANCHORAGE
Not To Scale (OPTIONAL - OPEN CARPORTS ONLY)



24\" 16 GA
48\" 16 GA
NOTE: BRACE

3 BASE RAIL ANCHORAGE
Not To Scale

ALTERNATE POST TO CONCRETE FOUNDATION CONNECTION DETAIL

Not To Scale

CONCRETE:
CONCRETE SHALL HAVE A MINIMUM SPECIFIED COMPRESSIVE STRENGTH OF 2500 PSI AT 28 DAYS.

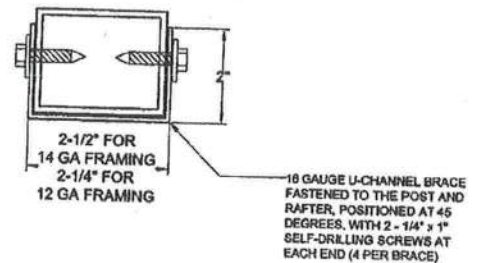
COVER OVER REINFORCING STEEL
FOR FOUNDATIONS, MINIMUM CONCRETE COVER OVER REINFORCING BARS SHALL BE: 3 INCHES IN FOUNDATIONS WHERE THE CONCRETE IS CAST AGAINST AND PERMANENTLY IN CONTACT WITH THE EARTH OR EXPOSED TO THE EARTH OR WEATHER AND 1 1/2 INCHES ELSEWHERE. REINFORCING BARS EMBEDDED IN GROUTED CELLS SHALL HAVE A MINIMUM CLEAR DISTANCE OF 1/4 INCH FOR FINE GROUT OR 1/2 INCH FOR COARSE GROUT BETWEEN REINFORCING BARS AND ANY FACE OF A CELL. REINFORCING BARS USED IN MASONRY WALLS SHALL HAVE A MASONRY COVER (INCLUDING GROUT) OF NOT LESS THAN 2 INCHES FOR MASONRY UNITS WITH FACE EXPOSED TO EARTH OR WEATHER 1 1/2 INCHES FOR MASONRY UNITS NOT EXPOSED TO EARTH OR WEATHER.

REINFORCING STEEL:
THE REINFORCING STEEL SHALL BE MINIMUM GRADE 40.

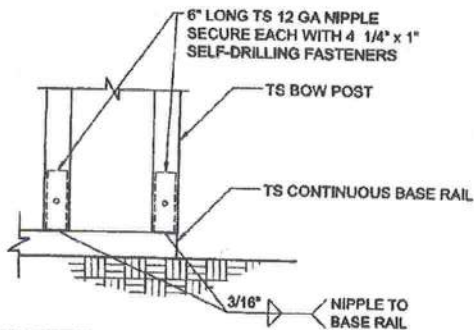
GALVANIZATION:
METAL ACCESSORIES FOR USE IN EXTERIOR WALL CONSTRUCTION AND NOT DIRECTLY EXPOSED TO THE WEATHER SHALL BE GALVANIZED IN ACCORDANCE WITH ASTM A 153, CLASS B-2. METAL PLATE CONNECTORS, SCREWS, BOLTS AND NAILS EXPOSED DIRECTLY TO THE WEATHER SHALL BE STAINLESS STEEL OR HOT DIPPED GALVANIZED.

REINFORCEMENT MAY BE BENT IN THE SHOP OR THE FIELD PROVIDED:
1. ALL REINFORCEMENT IS BENT COLD,
2. THE DIAMETER OF THE BEND, MEASURED ON THE INSIDE OF THE BAR, IS NOT LESS THAN SIX-BAR DIAMETERS AND
3. REINFORCEMENT PARTIALLY EMBEDDED IN CONCRETE SHALL NOT BE FIELD BENT.

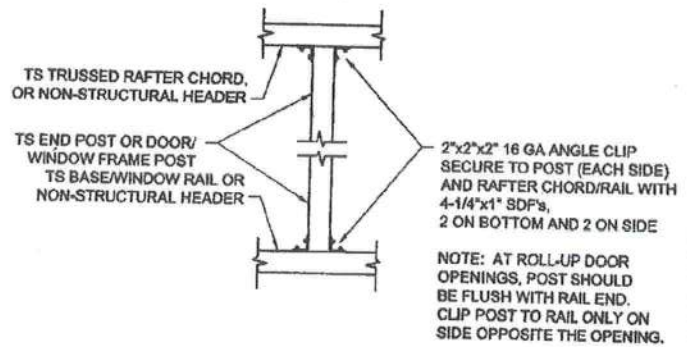
EXCEPTION: WHERE BENDING IS NECESSARY TO ALIGN DOWEL BARS WITH A VERTICAL CELL, BARS PARTIALLY EMBEDDED IN CONCRETE SHALL BE PERMITTED TO BE BENT AT A SLOPE OF NOT MORE THAN 1 INCH OF HORIZONTAL DISPLACEMENT TO 6 INCHES OF VERTICAL BAR LENGTH.



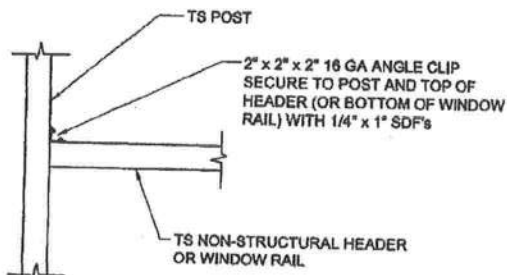
BRACE SECTION
Not To Scale



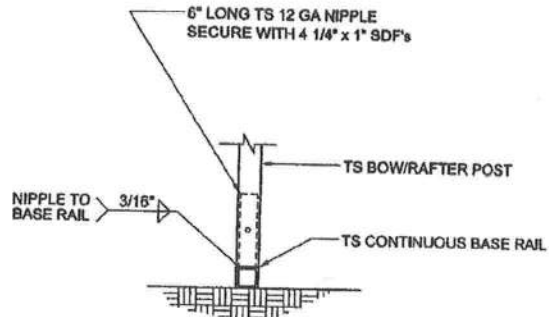
3 **RAFTER POST/BASE
BASE RAIL CONNECTION DETAIL**
Not To Scale



4 **POST TO RAIL, TRUSS CHORD, OR
NON-STRUCTURAL HEADER CONN. DETAIL**
Not To Scale

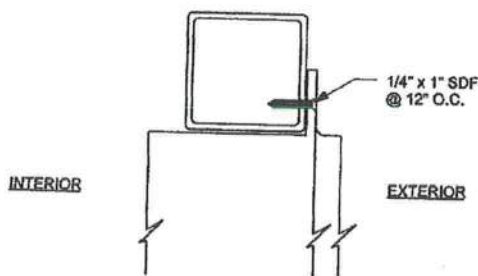


7 **NON-STRUCTURAL HEADER/WINDOW
RAIL TO POST CONNECTION DETAIL**
Not To Scale

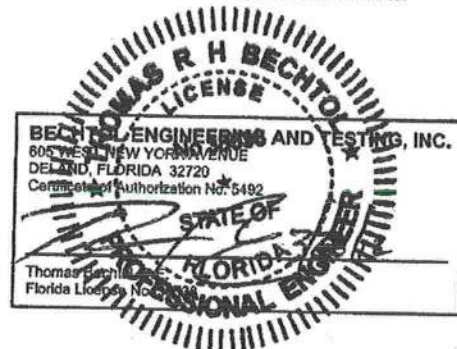


8 **POST/BASE RAIL CONN. DETAIL**
Not To Scale

NOTE:
14 GA FRAMING IS 2-1/2\" x 2-1/2\" TUBE STEEL.
12 GA FRAMING IS 2-1/4\" x 2-1/4\" TUBE STEEL.
NIPPLES ARE 2-1/4\" x 2-1/4\" 12 GA T.S. FOR 14 GA FRAMING.
NIPPLES ARE 2\" x 2\" 12 GA T.S. FOR 12 GA FRAMING.



A **SECTION**
Not To Scale



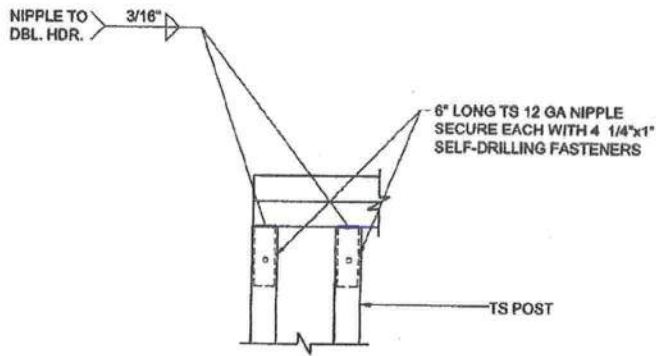
CAROLINA CARPORTS, INC.



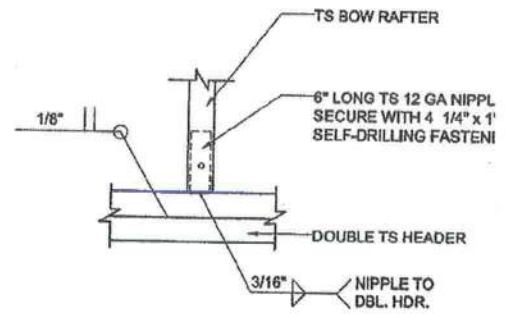
**BECHTOL ENGINEERING
AND TESTING, Inc.**

CONSULTING GEOTECHNICAL, ENVIRONMENTAL, AND MATERIALS TESTING ENGINEERS
Certificate of Authorization No. 00009492

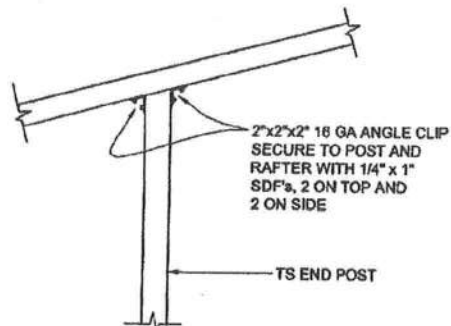
FIELD:	DATE:	03-16-12
DRAWN: RR	SCALE:	NTS
CHECKED: JP	PROJ. NO.:	06175
APPROVED: TB	SHEET 4 OF 4	



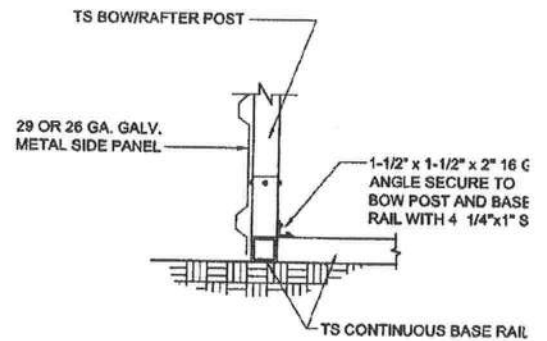
1 RAFTER POST/DBL. HEADER DETAIL
Not To Scale



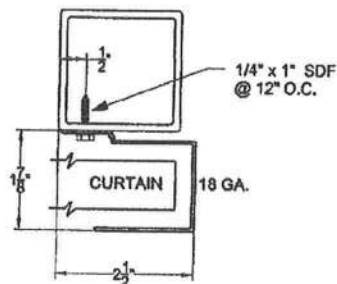
2 RAFTER POST/HEADER DETAIL
Not To Scale



5 END POST/RAFTER CONN. DETAIL
Not To Scale



6 END POST/BASE RAIL CONN.
Not To Scale



SECTION THROUGH ROLL UP DOOR HEADER

Not To Scale

CURTAIN: 26 GA. galvanized steel with baked on epoxy primer & polyester top coat.

