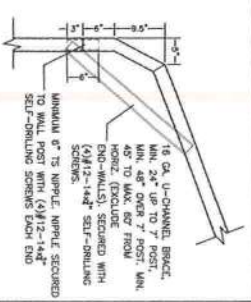
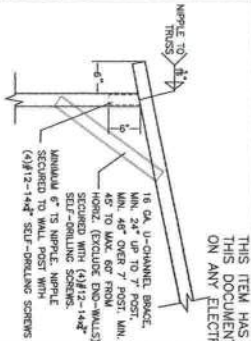


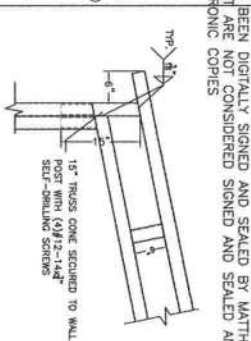
THIS ITEM HAS BEEN DIGITALLY SIGNED AND SEALED BY MATTHEW BALDWIN, P.E. ON 1/30/2023. PRINTED COPIES OF THIS DOCUMENT ARE NOT CONSIDERED SIGNED AND SEALED AND THE SHA AUTHENTICATION CODE MUST BE VERIFIED ON ANY ELECTRONIC COPIES



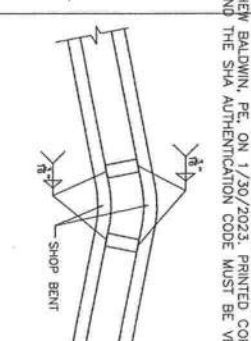
BOW RAFTER TO POST CONNECTION DETAIL



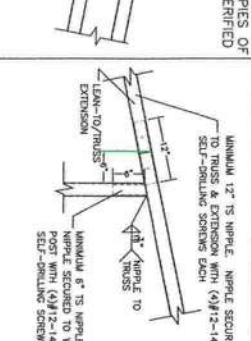
BOX EAVE RAFTER TO POST CONNECTION DETAIL



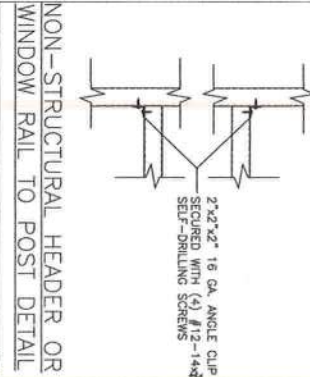
40' BOX EAVE RAFTER TO POST CONNECTION DETAIL



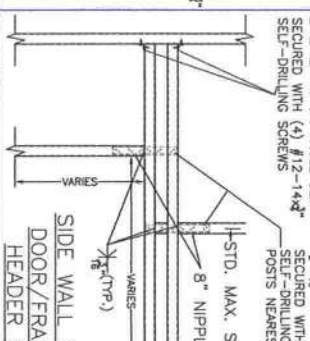
TRUSSED RAFTER CONNECTION DETAIL



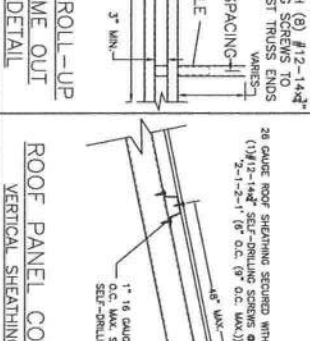
LEAN-TO TO TRUSS CONNECTION



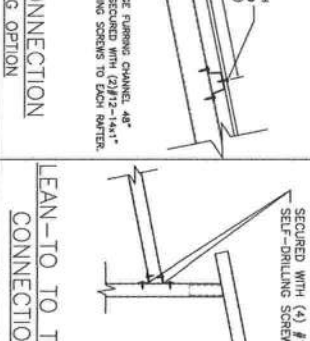
NON-STRUCTURAL HEADER OR WINDOW RAIL TO POST DETAIL



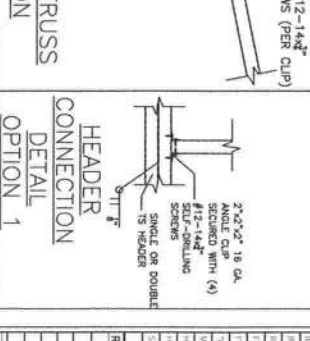
SIDE WALL ROLL-UP DOOR/FRAME OUT HEADER DETAIL



ROOF PANEL CONNECTION VERTICAL SHEATHING OPTION



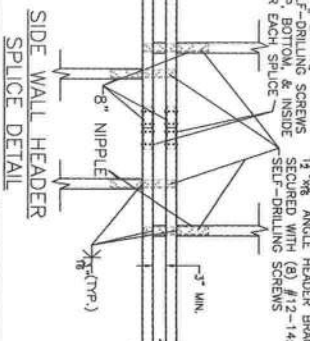
LEAN-TO TO TRUSS CONNECTION



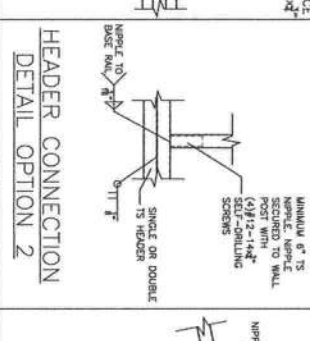
HEADER CONNECTION DETAIL OPTION 1



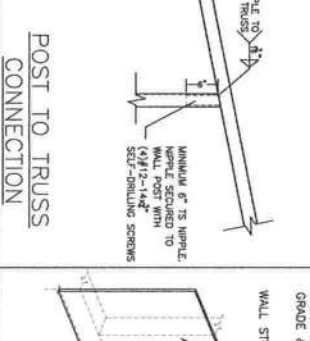
SIDE WALL HEADER SPLICE DETAIL



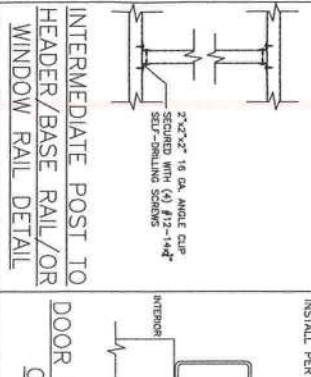
HEADER CONNECTION DETAIL OPTION 2



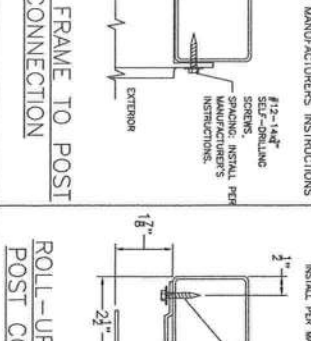
POST TO TRUSS CONNECTION



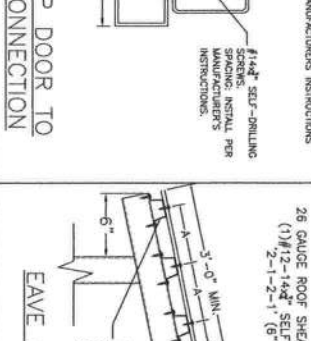
HYDROVENT DETAIL (OPTIONAL)



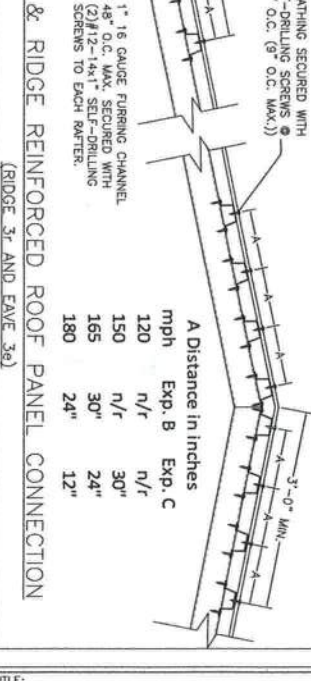
INTERMEDIATE POST TO HEADER/BASE RAIL/OR WINDOW RAIL DETAIL



DOOR FRAME TO POST CONNECTION



ROLL-UP DOOR TO POST CONNECTION



EAVE & RIDGE REINFORCED ROOF PANEL CONNECTION

mph	Exp. B	Exp. C
120	n/r	n/r
150	n/r	30"
165	30"	24"
180	24"	12"

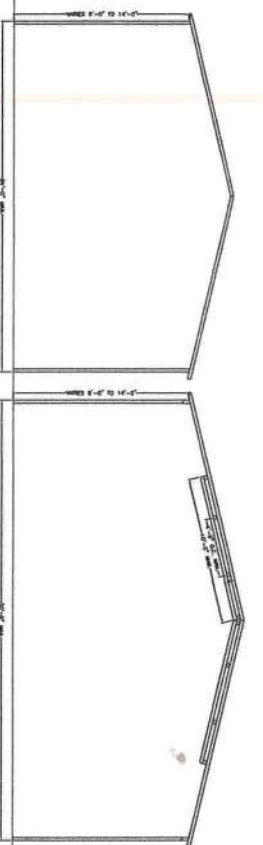


DATE	DESCRIPTION	DATE	BY
1/30/2023	REVISIONS	1/30/2023	MB
1/30/2023	1. HEADER SPACE, FULL COMPACTION	1/30/2023	MB
1/30/2023	2. PRODUCT #, NOTES	1/30/2023	MB

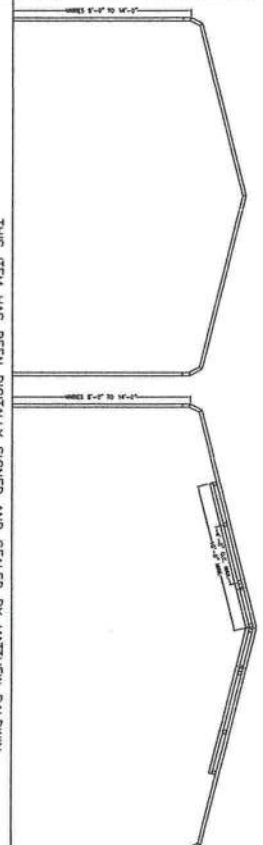
DETAILS

Sheet: CA-2 OF 3

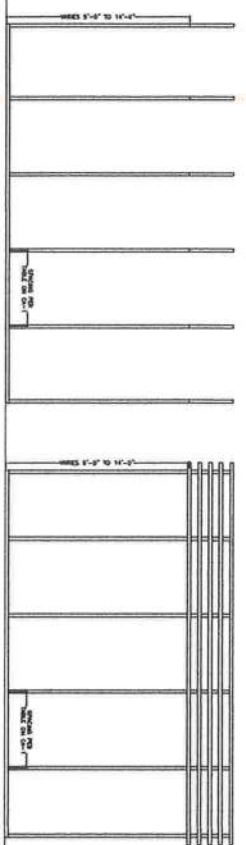
Matthew T. Baldwin P.E.
Florida License #64608



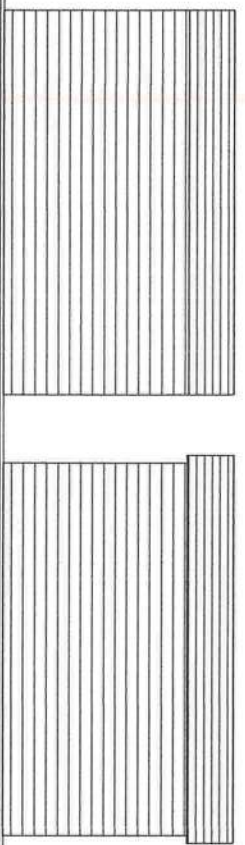
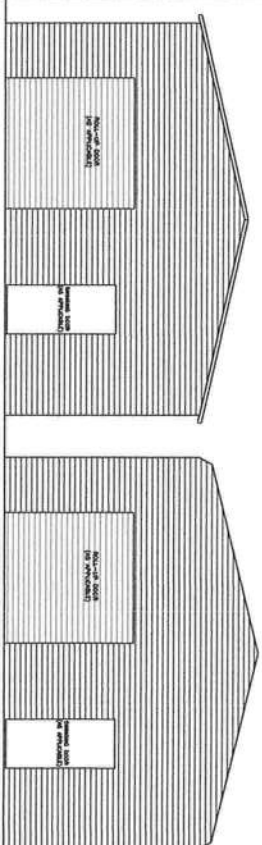
TYPICAL POST/TRUSS FRAMING SECTION -
BOX EAVE, 24'-1" TO 30' WIDE



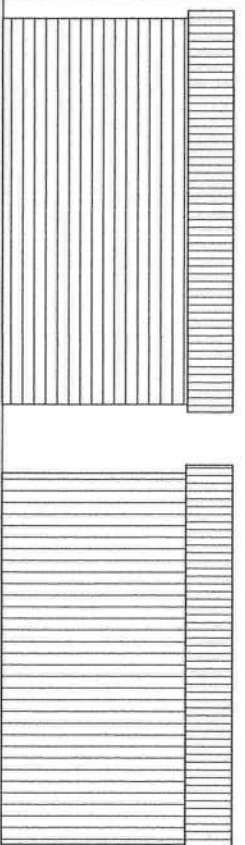
THIS ITEM HAS BEEN DIGITALLY SIGNED AND SEALED BY MATTHEW BALDWIN,
PE, ON 1/30/2023. PRINTED COPIES OF THIS DOCUMENT ARE NOT
CONSIDERED SIGNED AND SEALED AND THE SHA AUTHENTICATION CODE
MUST BE VERIFIED ON ANY ELECTRONIC COPIES



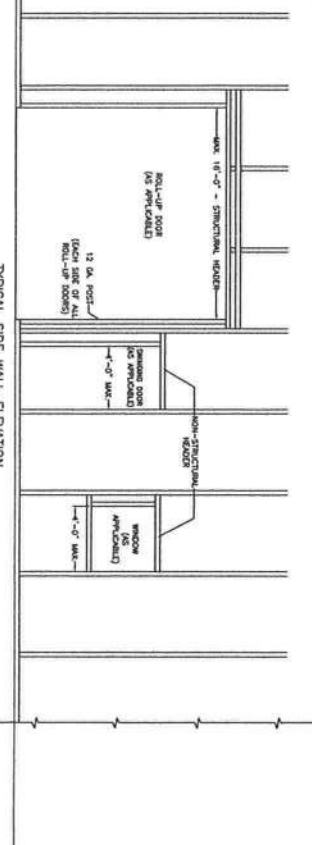
TYPICAL SIDE WALL FRAMING -
BOX EAVE, VERTICAL ROOF



TYPICAL SIDE WALL ELEVATION -
BOX EAVE, HORIZONTAL WALLS (OR LAP) & ROOF



TYPICAL END ELEVATION



TYPICAL SIDE WALL ELEVATION

Matthew T. Baldwin P.E.
Florida License #64608

Sheet: CA-3 OF 3

CODE INFORMATION		REVISIONS	
CODE VERSION	REV 2005 T6, EDITION, AEC2-3-1	REVISION	DATE BY
MANUFACTURER	CAMPBELL AMERICA	1	W/2/23 MTE
BUILDING TYPE	UTILITY STRUCTURE	2	V/2/23 MTE
CONSTRUCTION TYPE	I-4		
ROCK CATEGOR	1-4		
FIRE PROTECTION	None		
THE COMPRESSION STRUT	None		
ECCENTRICITY	Utility 2		
DUCT DIA AND SPED	16, 100-180mm		
DUCTUSE	B/C		
ENCLOSURE	Checked		
INTERNAL PRESSURE COEFFICIENT	+/- 0.18		
IMPACT FACTOR	1.5		
ROOF DEAD LOAD	10kN/m ²		
ROOF LIVE LOAD	10kN/m ²		
FLOOR DEAD LOAD	20kN/m ² on 300mm floor slab		
FLOOR LIVE LOAD	10kN/m ²		
TR AVANG OF WALL, FLOOR, ROOF	N/A		
MODUL FOR BULLE	1		
WINDBORNE PROTECTION DUCT	NO		
HUMANOID CHAIRS USED	NO		
SLOPING ROOF			
HEADER SPICE, FULL COMPANION			
PRODUCT #s, NOTES			

[illegible]