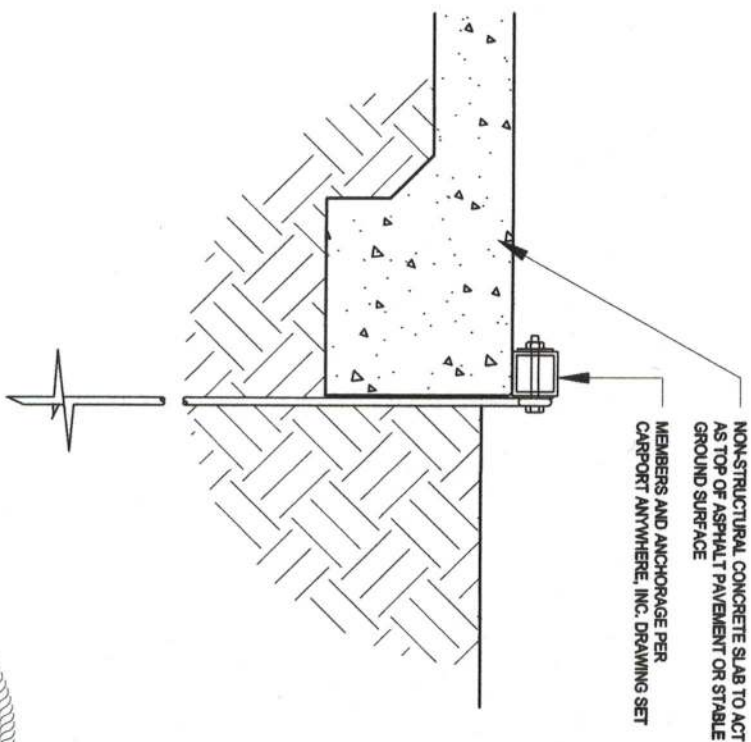


CARPORT ANYWHERE, INC. ORIGINAL DETAIL

SCALE: NONE



N. P. GEISLER, ARCHITECT MODIFICATIONS

SCALE: NONE

Nicholas Geisler
25 SEPTEMBER 2020



CARPORT ANYWHERE, INC.
DETAIL MODIFICATIONS
P. O. BOX 776
STARKE, FLORIDA 32720

N3
NICHOLAS
PAUL
GEISLER
ARCHITECT
N.C.A.R.B. Certified
1758 NW Brown Road
Lake City, FL 32055
386/365-4355

COMM. Nr.:	2K2091
DATE:	25SEP2020
Digitally signed by: N. P. GEISLER DN: CN = N. P. GEISLER C = US O = AR0007005 OU = ARCHITECT Date: 2020.09.25 12:04:57 -05'00'	
E-SEAL	

**TABLE 1
RAFTER FRAME, END POST, GROUND ANCHOR AND PANEL FASTENER SPACING SPECIFICATIONS**

RISK CATEGORY	WIND EXPOSURE CATEGORY	ULTIMATE WIND SPEED (MPH)	NOMINAL WIND SPEED (MPH)	MAXIMUM POST/RAFTER SPACING (FEET)	AVERAGE FASTENER SPACING ON-CENTERS ALONG RAFTERS OR PURLINS AND POSTS OR GIRTS (INCHES)	
					INTERIOR POST/RAFTERS	END POST/RAFTERS
I	C	110 TO 150	88 TO 116	5.0	6	6
		151 TO 180	117 TO 139	4.0	6	6

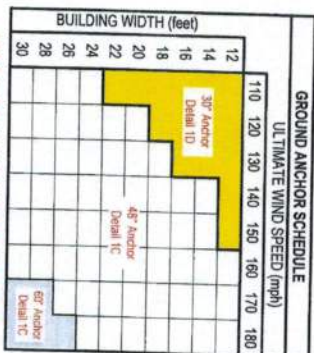
NOTES: 1. Specifications applicable to 26 gauge metal roof and wall panels fastened directly to 12 or 14 gauge steel tube framing, or 18 gauge hat channel roof purlins.
2. Specifications applicable only for mean roof height of 20 feet or less, and roof slopes of 7° to 27° (1.5:12 to 6:12 pitch). Spacing requirements for other roof heights and/or slopes may vary.

FBC APPROVED PRODUCTS LIST

PRODUCT CATEGORY	SUB CATEGORY	MANUFACTURER	APPROVAL NO. & DATE	MAXIMUM ALLOWABLE WIND SPEED
STRUCTURAL COMPONENTS	ROOF DECK	UNION CORRUGATING COMPANY 26 Gauge Aluminum Panel	F1803.5-14 12/21/17	180
STRUCTURAL COMPONENTS	STRUCTURAL WALL	UNION CORRUGATING COMPANY 26 Gauge Aluminum Panel	F1803.5-14 12/21/17	180
STRUCTURAL COMPONENTS	STRUCTURAL WALL	FAIRFOLD 26 Gauge Galvalume Panel	F14081.1-13 10/17/17	180
STRUCTURAL COMPONENTS	FLOOR JOIST	FLOOR JOISTING, LLC Model S-100	F11784.2 04/25/15	NA
EXTERIOR DOORS	SWINGING	THEMA, THE CORPORATION Chapel-Craft	F11503.5-14 12/22/17	180
EXTERIOR DOORS	SLIDING	ELUM DOOR AND METAL COMPANY Series 401	F11786.5 08/07/15	170
EXTERIOR DOORS	ROLL-UP	ACTA INDUSTRIES INC. Model 220	F14081.1-13 10/17/17	180
EXTERIOR DOORS	ROLL-UP	JANUS INTERNATIONAL CORPORATION Series 170	F11784.2 10/07/17	130
WINDOWS	SHOULDER HANG	POCHONTS ALUMINUM COMPANY, INC. Model 100.10	F11503.5-14 04/07/15	130
WINDOWS	SHOULDER HANG	MA WINDOWS AND DOORS Model 100.10	F11503.5-14 12/22/17	180

GENERAL NOTES:

- THESE PLANS PERTAIN ONLY TO THE STRUCTURE, INCLUDING MAIN WIND FORCE RESISTING SYSTEM COMPONENTS AND CLADDING, AND BASE RAIL ANCHORAGE. OTHER DESIGN ISSUES, INCLUDING BUT NOT LIMITED TO PLUMBING, ELECTRICAL, MECHANICAL, PROPERTY SET-BACKS, OR OTHER LOCAL ZONING REQUIREMENTS ARE THE RESPONSIBILITY OF OTHERS.
- THESE STRUCTURES ARE DESIGNED AS NON-HABITABLE UTILITY/STORAGE BUILDINGS. RISK CATEGORY II, CATEGORY E OF SUPPORTING DEAD LOAD OF THE STRUCTURE AND APPLICABLE LIVE AND WIND LOADS. IMPROVEMENTS NOT SPECIFICALLY ADDRESSED HEREIN WHICH EXERT ADDITIONAL LOAD ON THE STRUCTURE, AND INSTALLATION OF DOORS, WINDOWS AND OTHER COMPONENTS NOT LISTED IN THE FBC APPROVED PRODUCTS LIST ON THIS SHEET, AND NOT PROVIDED AND INSTALLED BY CARPORTS ANYWHERE, INC. SHALL BE AT THE OWNERS RISK. BECHTOL ENGINEERING AND TESTING, INC. SHALL NOT BE RESPONSIBLE FOR STRUCTURAL DAMAGE OR FAILURE DUE TO THE APPLICATION OF ADDITIONAL LOADS OF NON-APPROVED COMPONENTS.
- ALL STEEL TUBING SHALL BE 60XSI GALVANIZED STEEL. ALL FASTENERS SHALL BE GALVANIZED OR STAINLESS STEEL.
- FASTEN METAL ROOF AND WALL PANELS TO FRAMING WITH #12x14x3/4" SELF-DRILLING FASTENERS WITH CONTROL SEAL WASHER @ 8" O.C. AVERAGE.
- ALL FIELD FRAMING CONNECTIONS SHALL BE #12x14x3/4" SELF-DRILLING SCREWS WITHOUT CONTROL SEAL WASHER. ALL SHOT FRAMING CONNECTIONS SHALL BE WELDED.
- CONCRETE SHALL HAVE A MINIMUM COMPRESSIVE STRENGTH OF 2800 PSI AT 28 DAYS. THE REINFORCING STEEL SHALL BE MINIMUM GRADE 40. CONCRETE SLAB FOUNDATIONS SHALL BE REINFORCED WITH 60S W/ 4XMM 4 WELDED WIRE FABRIC COMPLYING WITH ASTM A 185, OR WITH SYNTHETIC FIBER REINFORCEMENT COMPLYING WITH ASTM C1116.
- BASE RAIL GROUND ANCHOR REQUIREMENTS. ONE WITHIN 6" OF EVERY POST LOCATION, AND BOTH SIDES OF OPENINGS WHERE BASE RAIL IS ABSENT. GROUND ANCHORS ARE NOT REQUIRED FOR CONCRETE FOOTING AND/OR CONCRETE SLAB CONSTRUCTION. SEE GROUND ANCHOR SCHEDULE (THIS SHEET) FOR SPECIFIC TYPE GROUND ANCHOR REQUIREMENTS.
- CONCRETE EXPANSION ANCHORS SHALL BE WELT ANCHOR TYPE MODEL AT102, OR SLEEVE ANCHOR MODEL ISA 1020, OR EQUIVALENT.
- POST/RAFTER BRACING. BRACE ON EVERY POST/RAFTER CONNECTION, EXCEPT FOR END WALLS AND GABLE ENDS.
- SLAB FOUNDATION SUBGRADE SOILS SHALL BE TERNATE TREATED AND COVERED WITH 6 MIL VULCAN RETARDER PER SECTION 1016.1 OF THE FLORIDA BUILDING CODE SIXTH EDITION (2017) (FBC FE 2017). RESIDENTIAL AND SECTION 1016.1 OF THE FBC FE 2017.
- 14 GA FRAMING IS 2x12 x 2x12 TUBE STEEL (TS). INPLETS ARE 2x14" x 2x14" TS FOR 14 GA FRAMING. 12 GA FRAMING IS 2x14" x 2x14" TS. INPLETS ARE 2x12" TS FOR 12 GA FRAMING.



DETAILS 1C AND 1D SHOWN ON SHEET 3 OF 4

**METAL CARPORT INSTALLATION PLANS AND DETAILS
AND
FRAMING AND FASTENER SPECIFICATIONS**

FOR CONSTRUCTION IN THE
STATE OF FLORIDA

PREPARED FOR:
CARPORTS ANYWHERE
P.O. BOX 776
STARKE, FL 32091

PREPARED BY:
BECHTOL ENGINEERING AND TESTING, INC.
605 WEST NEW YORK AVENUE
DELAND, FLORIDA 32720
Certificate of Authorization No. 00005462

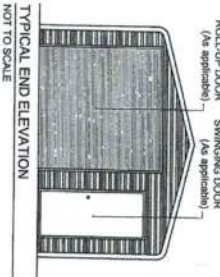
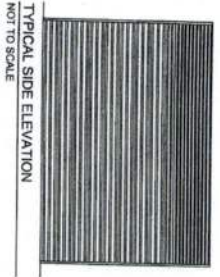
THIS IS TO CERTIFY THAT THE CALCULATIONS AND SPECIFICATIONS HEREIN HAVE BEEN REVIEWED BY THE UNDERSIGNED PROFESSIONAL ENGINEER AND ARE IN ACCORDANCE WITH THE REQUIREMENTS OF SECTION 1609 OF THE FLORIDA BUILDING CODE, SIXTH EDITION (2017). THE PLANS ARE VALID UNTIL THE NEXT REVISION OF THE FLORIDA BUILDING CODE.



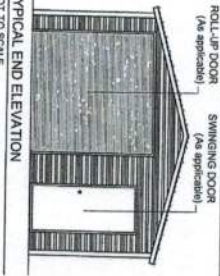
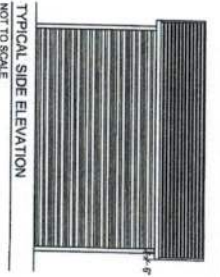
**CARPORTS ANYWHERE, INC.
ENCLOSED BUILDING**

DATE	01/02/18
DESIGNED BY	MDG
CHECKED BY	NTS
DATE	01/02/18
PROJECT NO.	13
SHEET	1 OF 4

BOW FRAME RAFTER ENCLOSED BUILDING - HORIZONTAL ROOF



BOX EAVE FRAME RAFTER ENCLOSED BLDG - HORIZONTAL ROOF

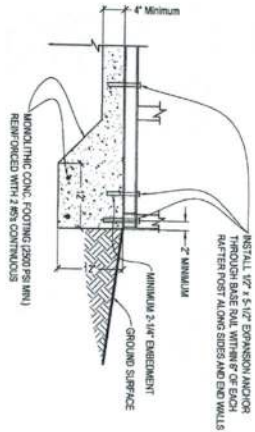


BOX EAVE FRAME RAFTER ENCLOSED BLDG - VERTICAL ROOF

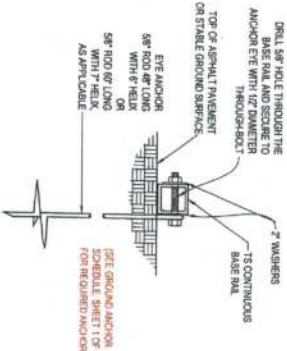
BECHTOL ENGINEERING AND TESTING, INC.
DESIGN AND TESTING
Certification of Approval No. 10-158
Thomas Bechtol, P.E.
Professional Engineer
No. 93528
STATE OF
NEVADA
ENCLOSED BUILDING

CARPORTS AND TRUCKS, INC.
ENCLOSED BUILDING

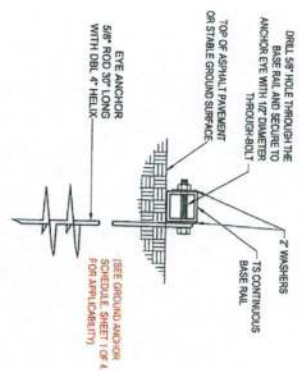
DATE	DRAWN	CHECKED	DATE
07/02/18	NTS	NTS	07/02/18
SHEET 2 OF 4		SHEET 2 OF 4	



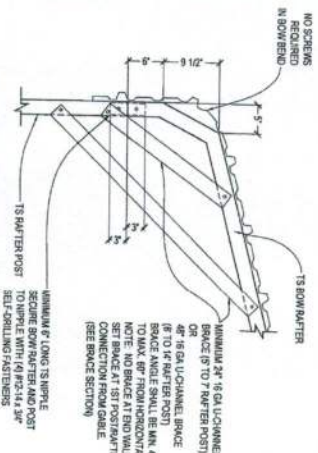
1A
CONCRETE MONO. SLAB BASE RAIL ANCHORAGE
NOT TO SCALE



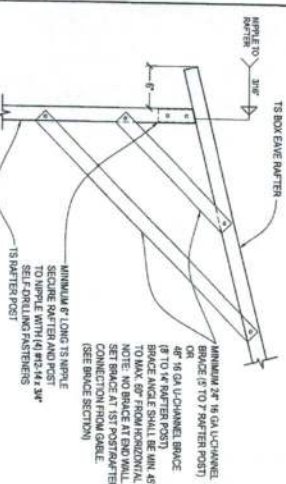
1B
BASE RAIL DEEP ANCHORAGE
NOT TO SCALE



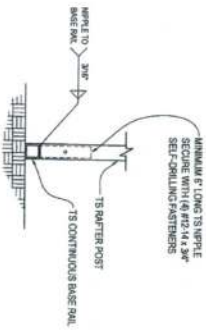
1C
BASE RAIL ANCHORAGE
NOT TO SCALE



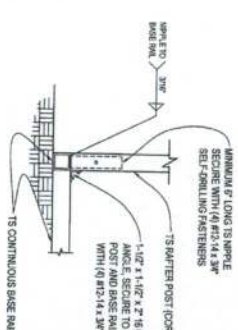
2A
BOW RAFTER/CORNER POST
CONNECTION DETAIL
NOT TO SCALE



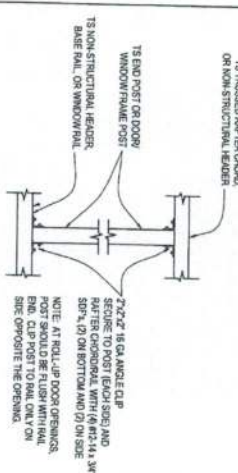
2B
BOX EAVE RAFTER/CORNER POST
CONNECTION DETAIL
NOT TO SCALE



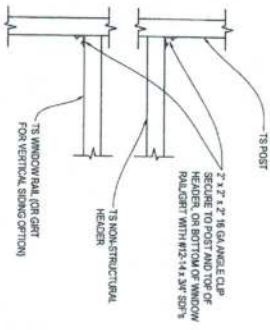
3
RAFTER POST/
BASE RAIL CONNECTION DETAIL
NOT TO SCALE



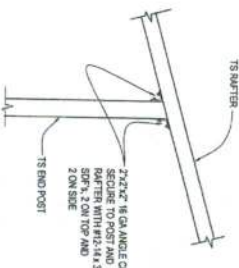
4
END POST/BASE RAIL CONNECTION DETAIL
NOT TO SCALE



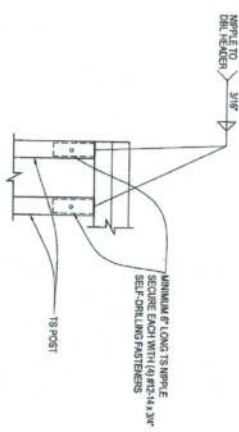
5
POST TO NON-STRUCTURAL HEADER, BASE
RAIL, OR WINDOW RAIL CONNECTION DETAIL
NOT TO SCALE



6
NON-STRUCTURAL HEADER OR WINDOW
RAIL TO POST CONNECTION DETAIL
NOT TO SCALE



7
END POST/RAFTER CONNECTION DETAIL
NOT TO SCALE



8
DBL HEADER/POST CONNECTION DETAIL
NOT TO SCALE

CARPORTS ANYWHERE, INC.

ENCLOSED BUILDING

BECHTOL ENGINEERING AND TESTING, INC.

Professional Engineer

Thomas Bechtol, P.E.

Florida License No. 38528

BECHTOL ENGINEERING AND TESTING, INC.

DESIGN, ENGINEERING, CONSTRUCTION

10000 N. W. 10th Ave., Suite 100

Miami, FL 33150

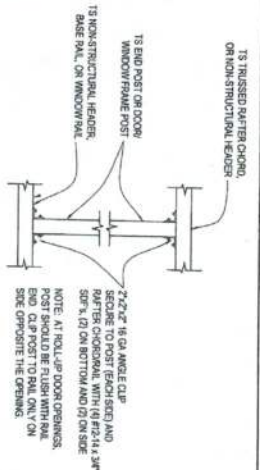
Phone: (305) 441-1111

Fax: (305) 441-1112

Website: www.bechtol.com

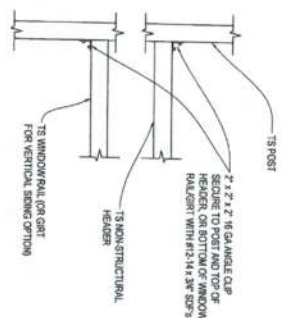
DATE	BY	REVISION
01/20/18	WJD	NTS
01/20/18	WJD	NTS
01/20/18	WJD	NTS

SHEET 1 OF 4



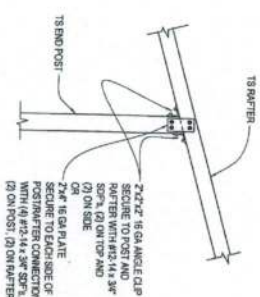
5
Not To Scale

POST TO NON-STRUCTURAL HEADER, BASE
RAIL, OR WINDOW RAIL CONNECTION DETAIL



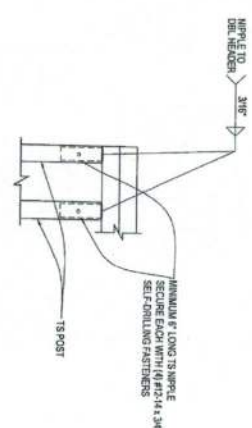
6
Not To Scale

NON-STRUCTURAL HEADER OR WINDOW
RAIL TO POST CONNECTION DETAIL



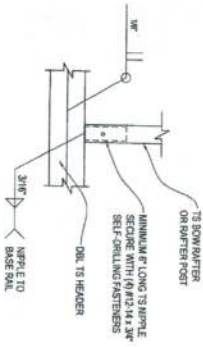
7
Not To Scale

END POST/RAFTER CONNECTION DETAIL



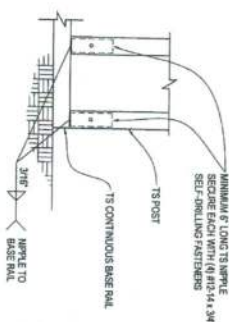
8
Not To Scale

DBL HEADER/POST CONNECTION DETAIL



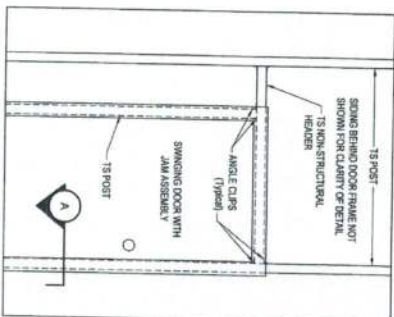
9
Not To Scale

RAFTER POST/DBL HEADER
CONNECTION DETAIL



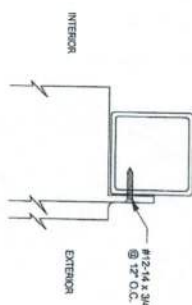
10
Not To Scale

RAFTER POST/BASE
RAIL CONNECTION DETAIL



A
Not To Scale

SECTION



Not To Scale

ROLL-UP DOOR GUIDE TO POST
CONNECTION DETAIL

CLIENT MAY: 26 GA. GALVALUME PANELS
BASED ON TYPICAL PANEL & POLYMER TOP COAT

CARPORTS ANYWHERE, INC.

ENCLOSED BUILDING

BECHTOL ENGINEERING AND TESTING, INC.

REGISTERED PROFESSIONAL ENGINEER

FLORIDA

Professional Seal: Thomas Bechtol, P.E., No. 38538, State of Florida, License No. 38538

BECHTOL ENGINEERING AND TESTING, INC.

CONSULTING ENGINEERING, ARCHITECTURAL, AND SPECIALTY TESTING SERVICES

1100 N. W. 11th Ave., Suite 1100, Fort Lauderdale, FL 33304

Phone: (954) 578-1100, Fax: (954) 578-1101, Email: info@bechtol.com

DATE: 07/02/18, DRAWN: NTS, CHECKED: NTS, PROJECT: 18, SHEET: 4 OF 4

RISK CATEGORY	WIND EXPOSURE CATEGORY	ULTIMATE WIND SPEED (MPH)	NOMINAL WIND SPEED (MPH)	MAXIMUM POST / RAFTER SPACING (FEET)	AVERAGE FASTENER SPACING ON-CENTERS ALONG RAFTERS OR PURLINS, AND POSTS OR GIRTS (INCHES)	
					INTERIOR POSTS/RAFTERS	END POSTS/RAFTERS
I	C	110 TO 150	89 TO 116	5.0	6	6
		151 TO 180	117 TO 139	4.0	6	6

NOTES: 1. Specifications applicable to 26 gauge metal roof and wall panels fastened directly to 12 or 14 gauge steel lube framing, or 18 gauge hot channel roof purlins.
2. Specifications applicable only for mean roof height of 20 feet or less, and roof slopes of 7" to 27" (1.5:12 to 6:12 pitch). Spacing requirements for other roof heights and/or slopes may vary.

PRODUCT CATEGORY	SUB CATEGORY	MANUFACTURER	APPROVAL NO. & DATE	MAXIMUM ALLOWABLE WIND SPEED
STRUCTURAL COMPONENTS	ROOF RISK	UNION CORRUGATING COMPANY 20 Elmgate Manufacturing Plant	FL3555-2-06 12/28/17	150
STRUCTURAL COMPONENTS	STRUCTURAL WALL	UNION CORRUGATING COMPANY 20 Elmgate Manufacturing Plant	FL3555-2-04 12/28/17	150
STRUCTURAL COMPONENTS	STRUCTURAL WALL	VALPOL 20 Elmgate Manufacturing Plant	FL1401-1-03 08/11/17	150
EXTENSION DOORS	FLOOD VENT	FLOOD POLYLINE, LLC Model FS-1058	FL1738-2 04/25/15	N/A
EXTENSION DOORS	SWINDING	THERMATRU CORPORATION Central-Ohio	FL-10355-5-04 12/20/17	180
EXTENSION DOORS	SWINDING	ELIUM TROCK AND METAL COMPANY Stevens 407	FL1799-5 05/07/15	170
EXTENSION DOORS	ROLL-UP	ACSA INDUSTRIES INC. Model 203	FL1641-1-05 05/09/17	180
EXTENSION DOORS	ROLL-UP	JANUS INTERNATIONAL CORPORATION Stevens 170	FL1728-1-05 05/07/17	130
WINDINGS	SINGLE PILING	POCCARENTIS ALUMINUM COMPANY, INC. Model 100-VIS	FL1296-2-04 2/10/09	130
WINDINGS	SINGLE PILING	MA WINDOWS AND DOORS Model 155-SH	FL1318-1-02 12/20/17	180

1. THESE PLANS PERTAIN ONLY TO THE CURICURE, INCLUDING MAIN WIND FORCE RESISTING SYSTEM, COMPONENTS AND CLADDING, AND BASE PILE ANCHORAGE. OTHER DESIGN ISSUES, INCLUDING BUT NOT LIMITED TO PLUMBING, ELECTRICAL, IMPROVEMENTS, THESE ARE SET BACKS, OR OTHER LOCAL BOARDING REQUIREMENTS ARE THE RESPONSIBILITY OF OTHERS.
2. THESE STRUCTURES ARE DESIGNED AS NON-HABITABLE ULTIMATE STORAGE BUILDINGS, RISK CATEGORY 1 (TABLE 6 OF APPLICABLE DEAD LOAD OF THE STRUCTURE AND APPLICABLE LIVE AND WIND LOADS. IMPROVEMENTS NOT SPECIFICALLY ADDRESSED HEREIN, WHICH EXIST ADDITIONAL LOAD ON THE STRUCTURE, AND INSTALLATION OF DOORS, WINDOWS AND OTHER COMPONENTS NOT COVERED BY THE SPEC. APPROVED PRODUCTS LIST ON THIS SHEET, AND NOT PROVIDED AND INSTALLED BY CARPORTS ANSWER, INC. SHALL BE AT THE OWNERS RISK. BEFORE ENGINEERING AND TESTING, INC. SHALL NOT BE RESPONSIBLE FOR STRUCTURAL DAMAGE OR FAILURE DUE TO THE APPLICATION OF ADDITIONAL LOADS OF NON-APPROVED COMPONENTS.
3. ALL STEEL TUBING SHALL BE 60 KSI GALVANIZED STEEL. ALL FASTENERS SHALL BE GALVANIZED OR STAINLESS STEEL.
4. FASTEN METAL ROOF AND WALL PANELS TO FRAMING WITH #12-4 x 3" SELF DRILLING FASTENERS WITH CONTROL SEAL WASHER @ P.O.C. AVERAGE.
5. ALL FIELD FRAMING CONNECTIONS SHALL BE #12-4 x 3" SELF DRILLING SCREWS WITHOUT CONTROL SEAL WASHER. ALL SHOP FRAMING CONNECTIONS SHALL BE WELDED.
6. CONCRETE SHALL HAVE A MINIMUM COMPRESSION STRENGTH OF 2800 PSI AT 28 DAYS. THE REINFORCING STEEL SHALL BE MINIMUM GRADE 40. CONCRETE SLAB FOUNDATIONS SHALL BE REINFORCED WITH 606 W/ 40W. A WELDED WIRE FABRIC COMPLYING WITH ASTM A 185, OR WITH SYNTHETIC FIBER REINFORCEMENT COMPLYING WITH ASTM C1118.
7. BASE PILE GROUND ANCHOR REQUIREMENTS. ONE WITHIN 6' OF EVERY PILE LOCATION, AND BOTH SIDES OF OPENINGS WHERE BASE PILE IS ABSENT. GROUND ANCHORS ARE NOT REQUIRED FOR CONCRETE FOOTING AND/OR CONCRETE SLAB CONSTRUCTION. (SEE GROUND ANCHOR SCHEDULE (THIS SHEET) FOR SPECIFIC TYPE GROUND ANCHOR REQUIREMENTS).
8. CONCRETE EXPANSION ANCHORS SHALL BE WELDED ANGLE-IRON MODEL, AT1252, OR SLEEVE ANCHOR MODEL, 16A, 1200, OR EQUIVALENT.
9. POST/RAFTER BRACING. BRACE ON EVERY POST/RAFTER CONNECTION, EXCEPT FOR END WALLS AND GABLE ENDS.
10. SLAB FOUNDATION SURFACE SOILS SHALL BE TENSILE TREATED AND COVERED WITH 6 MIL VAPOR BARRIER PER SECTION R318.1 OF THE FLORIDA BUILDING CODE SIXTH EDITION (2017) (FBC FC 2017), RESIDENTIAL, AND SECTION 1816.1 OF THE FBC FC 2017 - BUILDING.
11. 14 GA FRAMING IS 2 x 12" x 2 x 12" TUBE STEEL (TS). NIPPLES ARE 2 1/4" x 2 1/4" TS FOR 14 GA FRAMING. 12 GA FRAMING IS 2 1/4" x 2 1/4" TS. NIPPLES ARE 2 x 7 TS FOR 12 GA FRAMING.

[illegible]

FOR CONSTRUCTION IN THE
STATE OF FLORIDA

PREPARED FOR:
CARPORTS ANYWHERE
P.O. BOX 378
STARKE, FL 32091

PREPARED BY:
BECHTEL ENGINEERING AND TESTING, INC.
606 WEST NEW YORK AVENUE
DELAND, FLORIDA 32720

Certificate of Authorization No. 00005492

BECHTEL ENGINEERING AND TESTING, INC.
 605 WEST GERRARD AVENUE
 DELAWARE, OHIO 43015
 Contract No. 545-38
 License No. 20088
 Thomas Powell, P.E.
 Florida License No. 20088

PROFESSIONAL ENGINEER
 STATE OF FLORIDA

ENCLOSED BUILDING



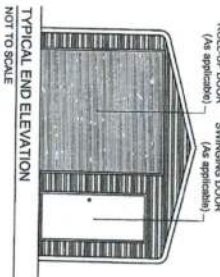
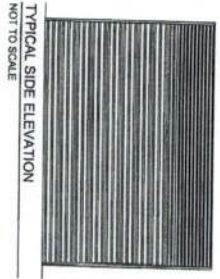
**BECHTOL ENGINEERING
AND TESTING, Inc.**

CONSULTING, TESTING, OVERSIGHT, AND MATERIALS TESTING SERVICES
FOR THE CONSTRUCTION INDUSTRY

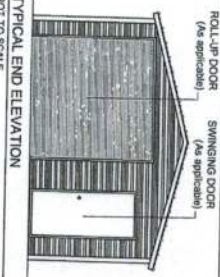
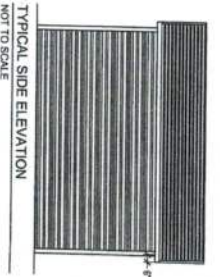
DATE	01/02/18
DRAWN	MMB
CHECKED	TJS
APPROVED	TJS

DATE	01/02/18
SCALE	NTS
PROJECT NO.	G18002
SHEET	OF 4

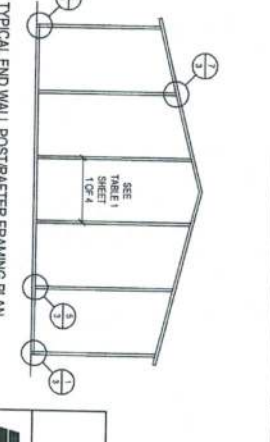
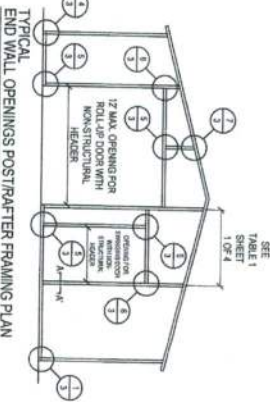
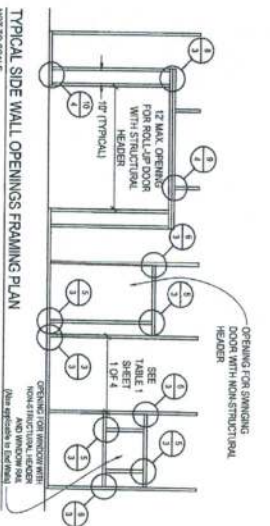
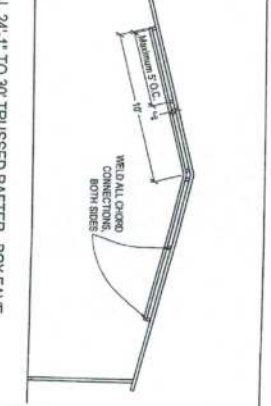
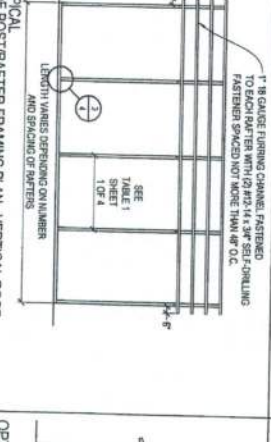
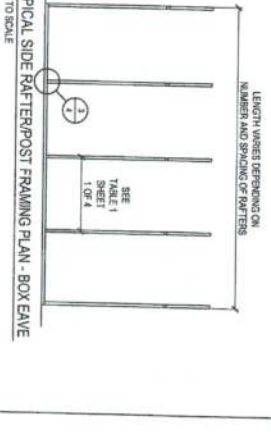
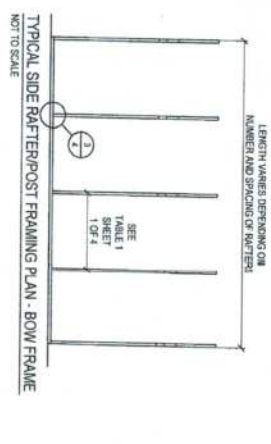
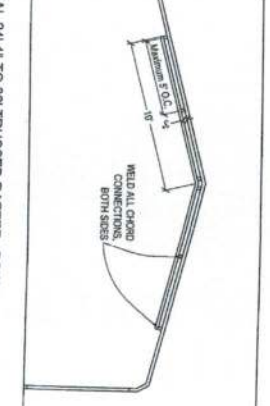
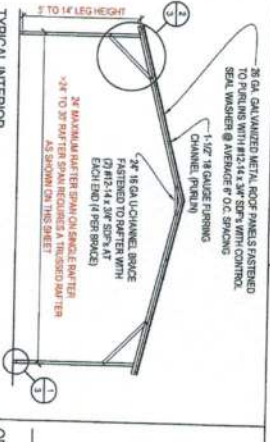
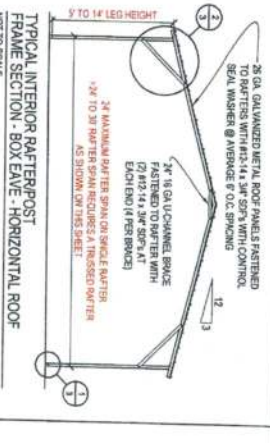
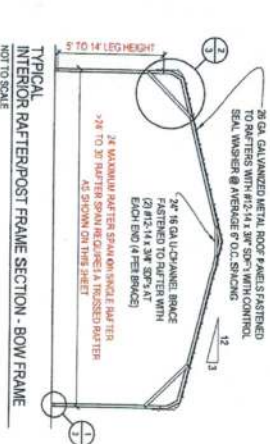
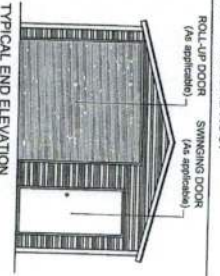
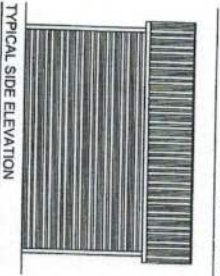
BOW FRAME RAFTER ENCLOSED BUILDING - HORIZONTAL ROOF



BOX EAVE FRAME RAFTER ENCLOSED BLDG - HORIZONTAL ROOF



BOX EAVE FRAME RAFTER ENCLOSED BLDG - VERTICAL ROOF



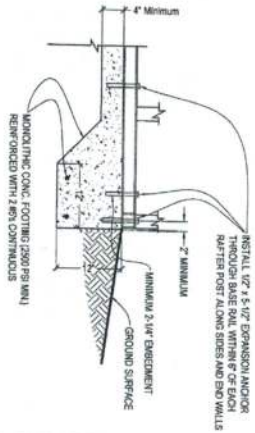
CARPORTS ANYWHERE, INC.
ENCLOSED BUILDING

BECHTOL ENGINEERING AND TESTING, INC.
605 WEST NEW YORK AVENUE
CHICAGO, IL 60610
TEL: (312) 321-1111
FAX: (312) 321-1112
WWW.BECHTOL-ENGINEERING.COM

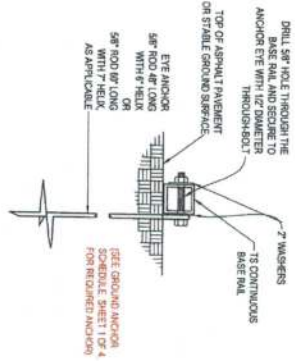
STATE OF ILLINOIS
Professional Engineer
No. 035528
THOMAS BECHTOL, P.E.
Firm License No. 035528

BECHTOL ENGINEERING AND TESTING, INC.
605 WEST NEW YORK AVENUE
CHICAGO, IL 60610
TEL: (312) 321-1111
FAX: (312) 321-1112
WWW.BECHTOL-ENGINEERING.COM

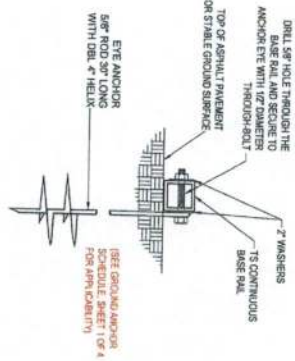
DATE: 01/20/18
BY: LWB
CHECKED: TTB
DESIGNED: TTB
SHEET 2 OF 4



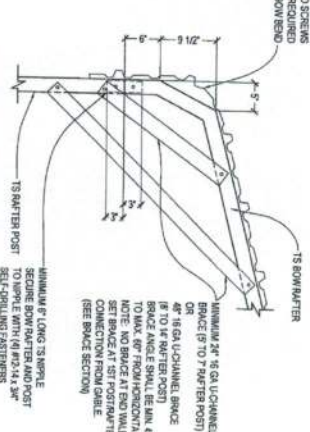
1A CONCRETE MONO. SLAB BASE RAIL ANCHORAGE
Not To Scale



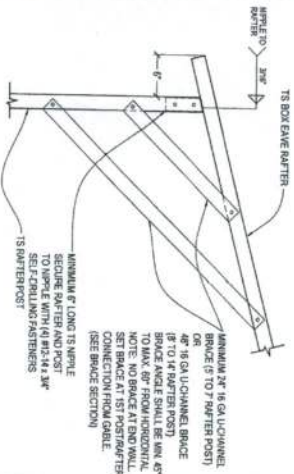
1B BASE RAIL DEEP ANCHORAGE
Not To Scale



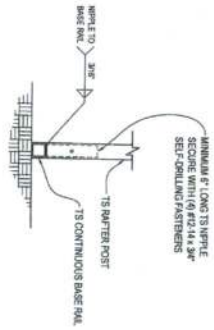
1C BASE RAIL ANCHORAGE
Not To Scale



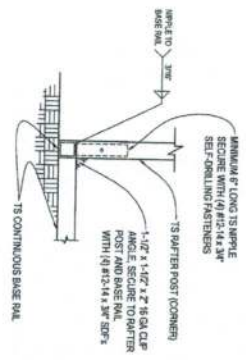
2A BOW RAFTER/CORNER POST CONNECTION DETAIL
Not To Scale



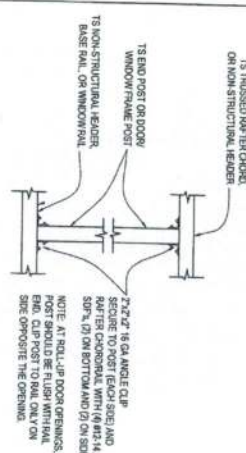
2B BOX EAVE RAFTER/CORNER POST CONNECTION DETAIL
Not To Scale



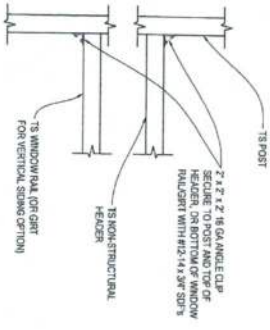
3 RAFTER POST/ BASE RAIL CONNECTION DETAIL
Not To Scale



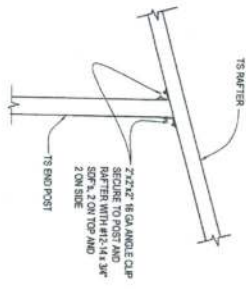
4 END POST/BASE RAIL CONNECTION DETAIL
Not To Scale



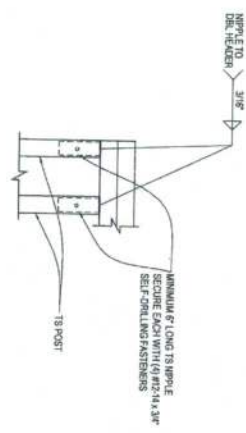
5 POST TO NON-STRUCTURAL HEADER, BASE RAIL, OR WINDOW RAIL CONNECTION DETAIL
Not To Scale



6 NON-STRUCTURAL HEADER OR WINDOW RAIL TO POST CONNECTION DETAIL
Not To Scale



7 END POST/RAFTER CONNECTION DETAIL
Not To Scale



8 DBL HEADER/POST CONNECTION DETAIL
Not To Scale

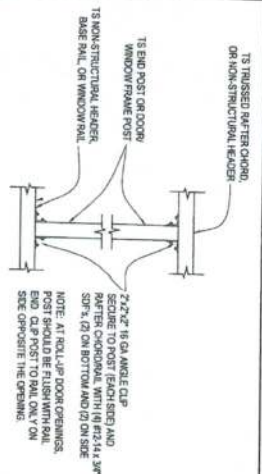
CARPORTS ANYWHERE, INC.

ENCLOSED BUILDING

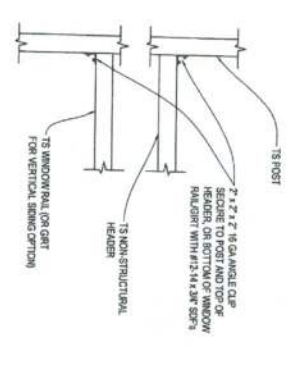
BECHTOL ENGINEERING AND TESTING, INC.
 1000 N. W. 10TH AVENUE, SUITE 200
 MIAMI, FL 33136
 Phone: (305) 385-2828
 Fax: (305) 385-2828
 Email: info@bechtol.com
 Website: www.bechtol.com

STATE OF FLORIDA
 PROFESSIONAL ENGINEER
 No. 38528
 Thomas Bechtol, P.E.
 Printed License No. 38528

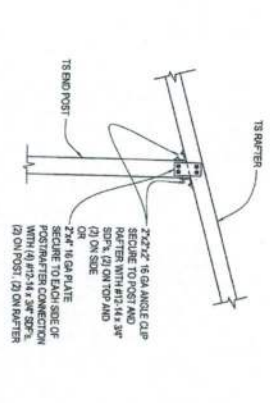
DATE	01/20/18	REV	01/20/18
DESIGN	UNB	DRAWN	NTS
CHECKED	TS	REVIEWED	01/20/18
PROJECT	TS	SHEET	3 OF 4



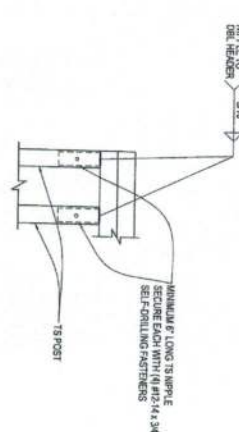
5
NOT TO SCALE
POST TO NON-STRUCTURAL HEADER, BASE RAIL, OR WINDOW RAIL CONNECTION DETAIL



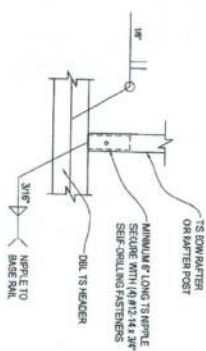
6
NOT TO SCALE
NON-STRUCTURAL HEADER OR WINDOW RAIL TO POST CONNECTION DETAIL



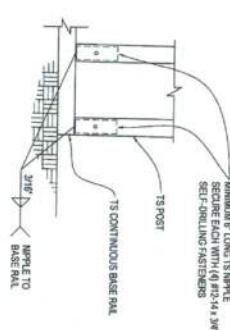
7
NOT TO SCALE
END POST/RAFTER CONNECTION DETAIL



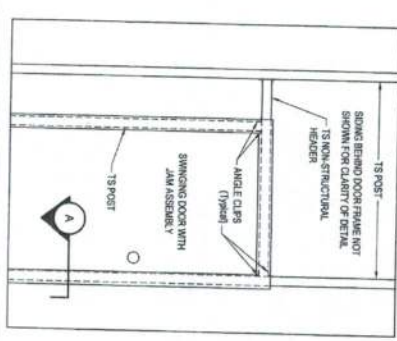
8
NOT TO SCALE
DBL HEADER/POST CONNECTION DETAIL



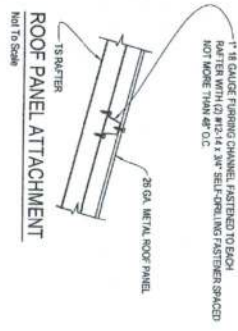
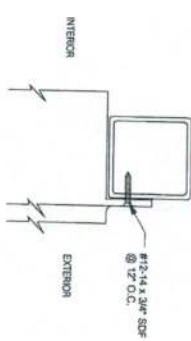
9
NOT TO SCALE
RAFTER POST/DBL HEADER CONNECTION DETAIL



10
NOT TO SCALE
RAFTER POST/BASE RAIL CONNECTION DETAIL



A
NOT TO SCALE
SECTION



ROLL-UP DOOR GUIDE TO POST CONNECTION DETAIL
NOT TO SCALE
CLUTTER: 28 GA. SPRINGED STEEL WITH
BASED ON ROLL-UP DOOR & ROLL-UP DOOR RAIL

CARPORTS ANYWHERE, INC.

ENCLOSED BUILDING

BECHTOL ENGINEERING AND TESTING, INC.

Professional Engineer License No. 38558

Thomas Bechtol, P.E.

Professional Engineer

BECHTOL ENGINEERING

AND TESTING, INC.

10000 N. W. 10th Ave., Suite 100

Miami, FL 33150

Phone: (305) 555-1111

Fax: (305) 555-1112

Website: www.bechtol.com

DATE	01/02/18
BY	MJB
CHECKED	NTS
DESIGNED	Q1802
PROJECT	TS
SHEET	4 OF 4