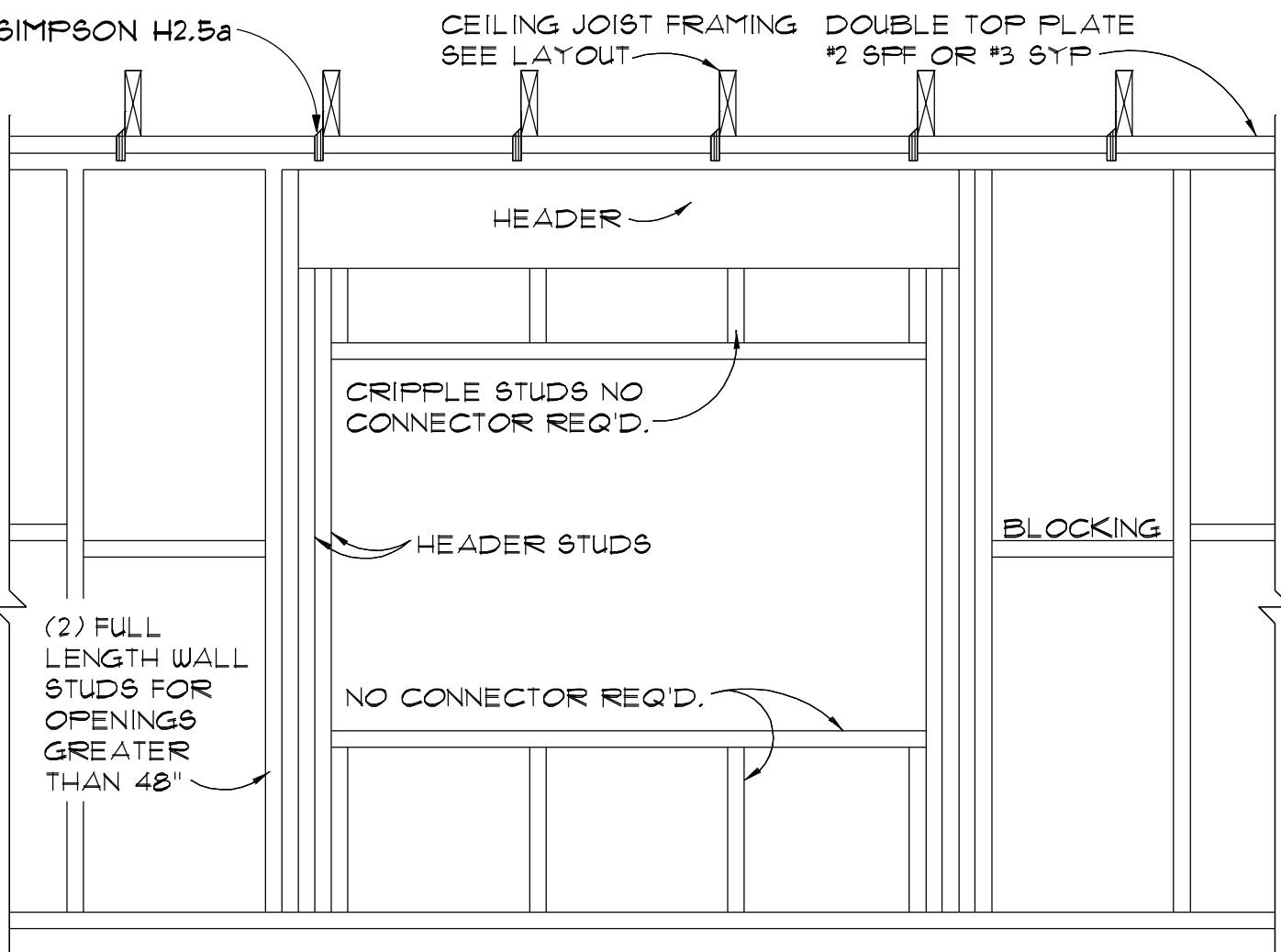


STANDARD HEADER SCHEDULE

0'-0" UP TO 6'-0" OPENINGS  
DOUBLE 2x8 No.2 SOUTHERN PINE WITH 1/2" OSB SOLID CONTINUOUS SPACER GLUED AND NAILED WITH 10d x 0.128" x 3" NAILS IN 2 ROWS @ 12" O.C. STAGGERED EACH SIDE WITH 1 - HEADER STUD AND 1 FULL HEIGHT STUDS EACH SIDE OF OPENING

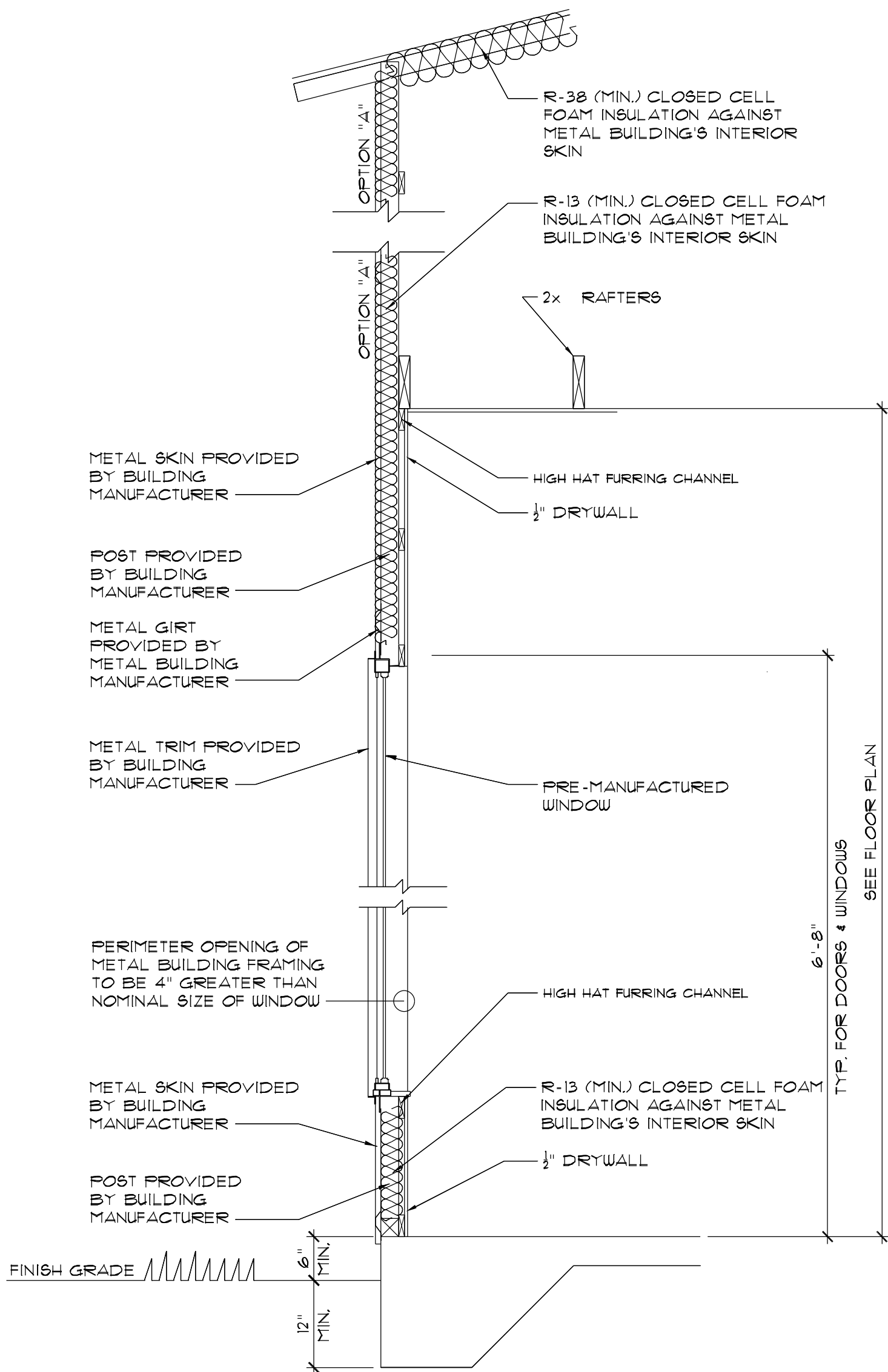
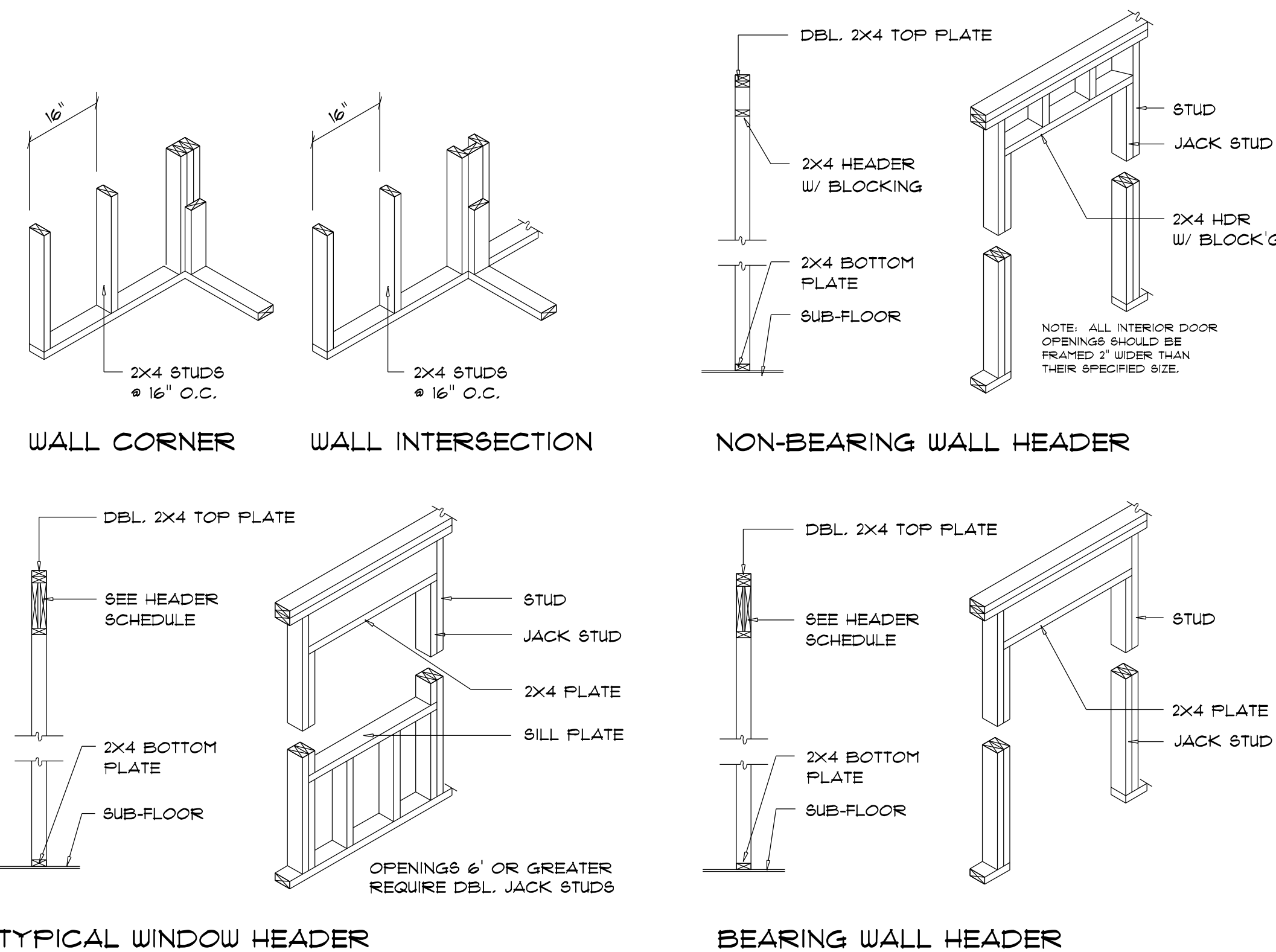
6'-0" UP TO 9'-0" OPENINGS  
DOUBLE 2x12 No.2 SOUTHERN PINE WITH 1/2" OSB SOLID CONTINUOUS SPACER GLUED AND NAILED WITH 10d x 0.128" x 3" NAILS IN 2 ROWS @ 12" O.C. STAGGERED EACH SIDE WITH 1 - HEADER STUD AND 2 FULL HEIGHT STUDS EACH SIDE OF OPENING

9'-0" UP TO 16'-0" OPENINGS  
DOUBLE 2x12 No.2 SOUTHERN PINE WITH 1/2" OSB SOLID CONTINUOUS SPACER GLUED AND NAILED WITH 10d x 0.128" x 3" NAILS IN 2 ROWS @ 12" O.C. STAGGERED EACH SIDE WITH 2 - HEADER STUDS 3 FULL HEIGHT STUDS EACH SIDE OF OPENING



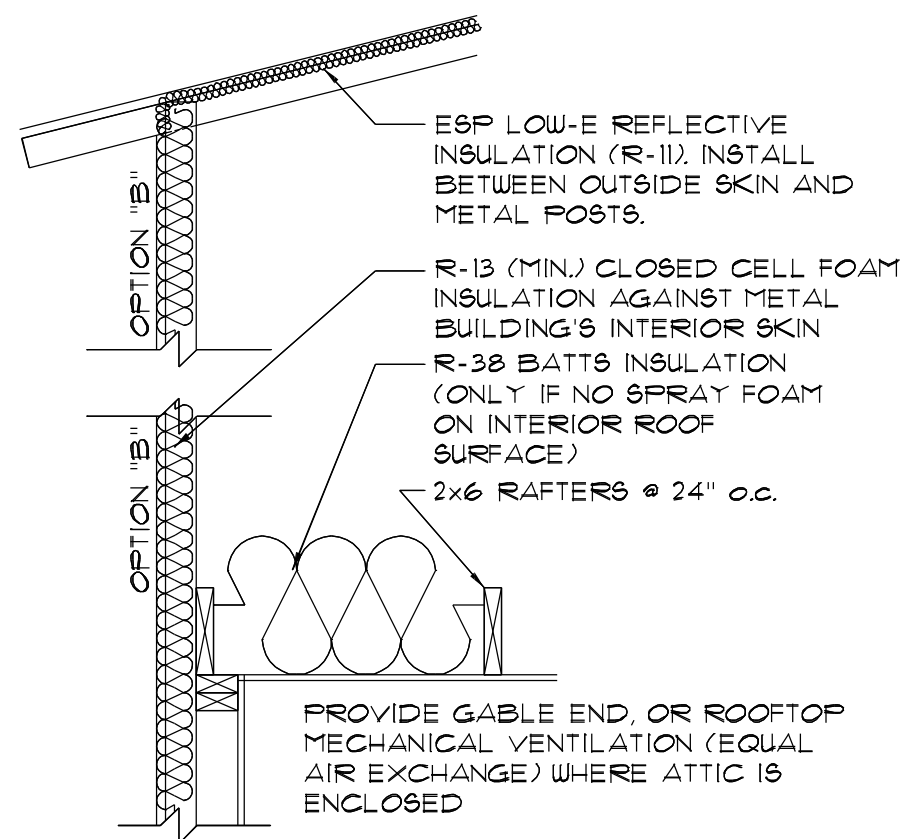
BEARING WALL FRAMING

SCALE: 3/4" = 1'-0"



TYPICAL WALL SECTION

SCALE: 3/4" = 1'-0"



OPTIONAL CLG INSUL.



REVISIONS SCHEDULE	
REVISIONS	Sep. 8th, 2024
REVISIONS	Oct. 10th, 2024

CUSTOM HOME FOR:  
**CURTIS JONES RESIDENCE**  
Columbia County, FL

**RIDGEPOINT DESIGN**  
566 SW ARLINGTON BLVD. STE 101, LAKE CITY, FL 32025  
P: 386-288-1188  
E: RIDGEPOINTDESIGN@GMAIL.COM

**NICHOLAS PAUL GEISLER ARCHITECT**  
1199 NW Brown Rd.,  
Lake City, FL 32025  
N.C.A.R.B. Certified

Digitally signed by:  
Nicholas P Geisler  
DN: CN = Nicholas P Geisler C = US  
O = Unaffiliated  
Date: 2024.10.15 12:42:25 -04'00'  
AR0007005

SHEET NUMBER  
**A.5**  
OF 6 SHEETS