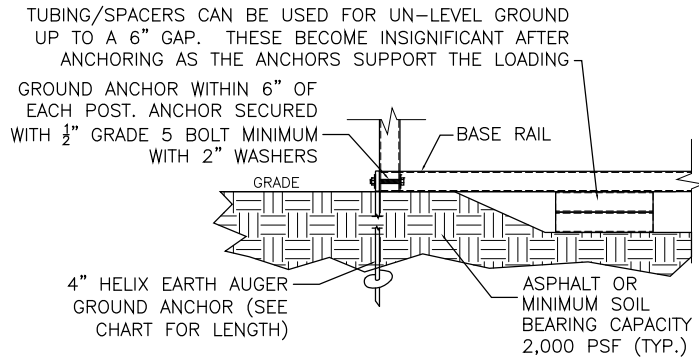
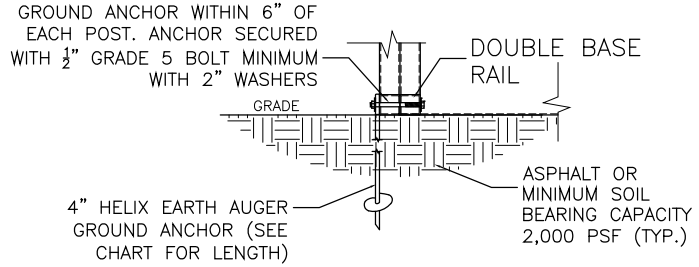


1. THESE PLANS PERTAIN ONLY TO THE STRUCTURE, INCLUDING MAIN WIND FORCE RESISTING SYSTEM, COMPONENTS AND CLADDING, AND BASE RAIL ANCHORAGE. OTHER DESIGN ISSUES, INCLUDING BUT NOT LIMITED TO PLUMBING, ELECTRICAL, INGRESS/EGRESS, PROPERTY SET-BACKS, FINISH FLOOR ELEVATION AND SLOPE, OR OTHER LOCAL ZONING REQUIREMENTS ARE THE RESPONSIBILITY OF OTHERS.
2. THIS STRUCTURE IS DESIGNED AS A NON-HABITABLE UTILITY/STORAGE BUILDING (RISK CATEGORY I) CAPABLE OF SUPPORTING DEAD LOAD OF THE STRUCTURE AND APPLICABLE LIVE AND WIND LOADS. IMPROVEMENTS NOT SPECIFICALLY ADDRESSED HEREIN, INCLUDING DOORS, WINDOWS, OR OTHER COMPONENTS NOT LISTED IN THE FBC APPROVED PRODUCTS LIST, AND NOT PROVIDED OR INITIALLY INSTALLED, WHICH EXERT ADDITIONAL LOADS ON THE STRUCTURE SHALL BE AT THE OWNER'S RISK. THE MANUFACTURER NOR THE ENGINEERING DESIGN SHALL NOT BE RESPONSIBLE FOR STRUCTURAL DAMAGE OR FAILURE DUE TO THE APPLICATION OF ADDITIONAL LOADS.
3. THIS BUILDING IS EXEMPT FROM THE FBC ENERGY CONSERVATION CODE PER SECTION C101.4.2.
4. WIND SPEED IS BASED ON RISK CATEGORY AND IS PER FBC FIGURES 1609.3(1,4)/ASCE REFERENCED WEB SITE (ASCEHAZARDTOOL.ORG) WITH ALLOWED INTERPOLATION.
5. ALL STEEL TUBING SHALL BE 50 KSI STEEL AND MEETS/EXCEEDS GALVANIZATION PER ASTM A1003/A1003M-15.
6. PLUMBING, ELECTRICAL, INGRESS/EGRESS, PROPERTY SET-BACKS, AND/OR OTHER LOCAL CODE REQUIREMENTS ARE THE RESPONSIBILITY OF THE OWNER.
7. FIELD FRAMING CONNECTIONS SECURED WITH #12-14x3/4" SELF-DRILLING SCREWS & 16GA. BRACKETS AS NEEDED.
8. ALL SHOP FRAMING CONNECTIONS ARE TO BE WELDED. NO WELDING ONSITE. ALL WELDING DONE IN SHOP BY A CERTIFIED WELDER.
9. CONCRETE EXPANSION ANCHORS & GROUND ANCHORS ARE TO BE MINIMUM 1/2" DIAMETER & 2,500LB TENSILE STRENGTH.
10. 14GA. FRAMING IS 2.5"x2.5" TUBE STEEL. NIPPLES ARE 2.25"x2.25" TUBE STEEL.
11. ANY FILL DIRT NEEDED IS TO BE COMPACTED TO 95%. CONCRETE OR GROUND SURFACE TO BE LEVEL WITHIN 2% MAX.

Ground Anchor Length				
(all building widths ≤ 30')		Wind Speed (mph)		
Soil Type		≤140	141-155	156-170
Very dense and/or cemented sand, coarse gravel, cobbles, preloaded silts, clays and coral		30"	30"	48"
Medium dense coarse sands, sandy gravels, very stiff silts and clays		30"	48"	48"
Loose to medium dense sands, firm to stiff clays, silts, and alluvial fill		48"	48"	60"
Loose sands, firm clays, silts, and alluvial fill		48"	60"	60"



### GROUND ANCHOR BASE RAIL DETAIL



### GROUND ANCHOR BASE RAIL DETAIL



CODE INFORMATION			
CODE VERSION		FBC 2023 8th Edition, ASCE-7-22	
MANUFACTURER		ALL METAL BULDINGS	
BUILDING TYPE		UTILITY STRUCTURE	
CONSTRUCTION TYPE		II-B	
RISK CATEGORY		I	
FIRE PROTECTION		NONE	
FIRE SUPPRESSION SYSTEM		NONE	
OCCUPANCY		UTILITY, U	
WIND SPEED		Vult-109mph	
EXPOSURE		C	
ENCLOSURE		ENCLOSED	
INTERNAL PRESSURE COEFF.		+/- 0.18	
IMPORTANCE FACTOR		1.0	
ROOF DEAD LOAD		10PSF	
ROOF LIVE LOAD		20PSF OR 300lb P.L.	
FLOOR DEAD LOAD		10PSF	
FLOOR LIVE LOAD		50PSF	
"R"RATING OF WALLS,FLOOR,ROOF		N/A	
MODULES PER BUILDING		1	
HURRICANE PROTECTION USAGE		NO	
HURRICANE SHELTER USAGE		NO	
SQUARE FOOTAGE		1,820 SQ. FT.	
REVISIONS			
REV	DESCRIPTON	DATE	BY
1	ENDS F/O SIZES, DBL POSTS	3/24/25	MTB

DRAWN BY:	MTB
DATE:	3/20/25
LOCATION:	150 SW Cessna Ct, Lake City
SIZE:	50'L X 46'W X 11'H

PLAN VIEW - S Budd

Matthew T. Baldwin P.E.  
Florida License #64608

Sheet: 1 OF 6

THIS ITEM HAS BEEN DIGITALLY SIGNED AND SEALED BY MATTHEW T. BALDWIN, P.E. ON THE DATE ADJACENT TO THE SEAL. PRINTED COPIES OF THIS DOCUMENT ARE NOT CONSIDERED SIGNED AND SEALED AND THE SIGNATURE MUST BE VERIFIED ON ANY ELECTRONIC COPIES.



CODE INFORMATION

CODE VERSION	FBC 2023 8th Edition, ASCE-7-22
MANUFACTURER	ALL METAL BUILDINGS
BUILDING TYPE	UTILITY STRUCTURE
CONSTRUCTION TYPE	II-B
RISK CATEGORY	I
FIRE PROTECTION	NONE
FIRE SUPPRESSION SYSTEM	NONE
OCCUPANCY	UTILITY, U
WIND SPEED	Vult-109mph
EXPOSURE	C
ENCLOSURE	ENCLOSED
INTERNAL PRESSURE COEFF.	+/- 0.18
IMPORTANCE FACTOR	1.0
ROOF DEAD LOAD	10PSF
ROOF LIVE LOAD	20PSF OR 300lb P.L.
FLOOR DEAD LOAD	10PSF
FLOOR LIVE LOAD	50PSF
"R"RATING OF WALLS,FLOOR,ROOF	N/A
MODULES PER BUILDING	1
HURRICANE PROTECTION USAGE	NO
HURRICANE SHELTER USAGE	NO
SQUARE FOOTAGE	1,820 SQ. FT.

REVISIONS

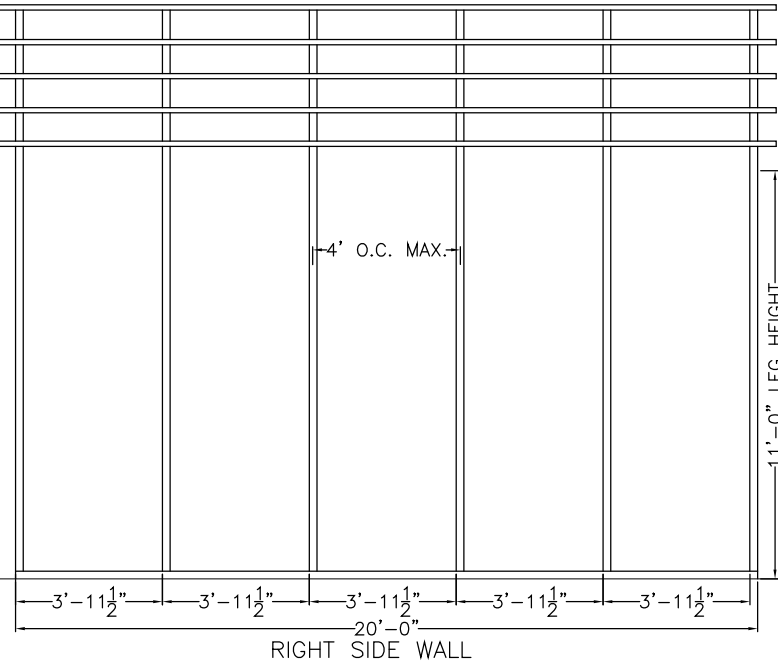
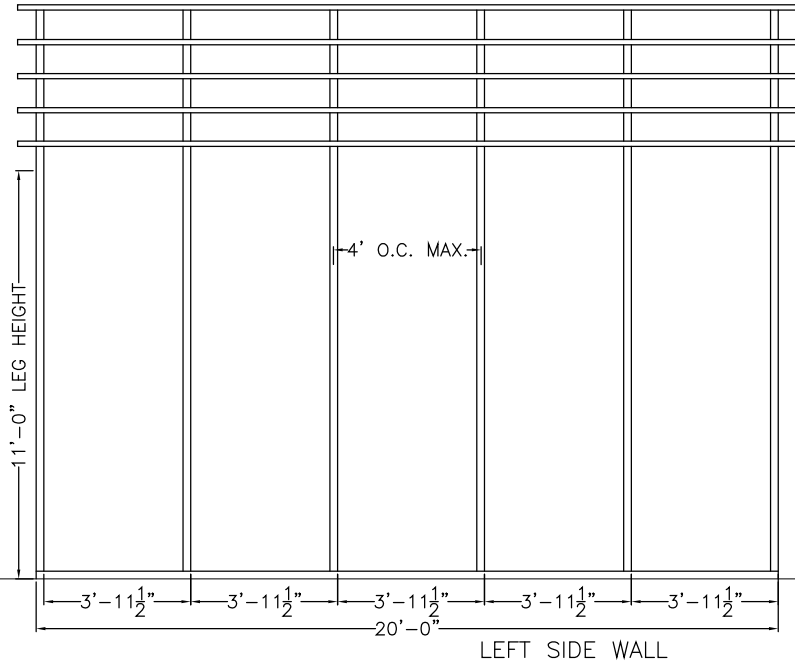
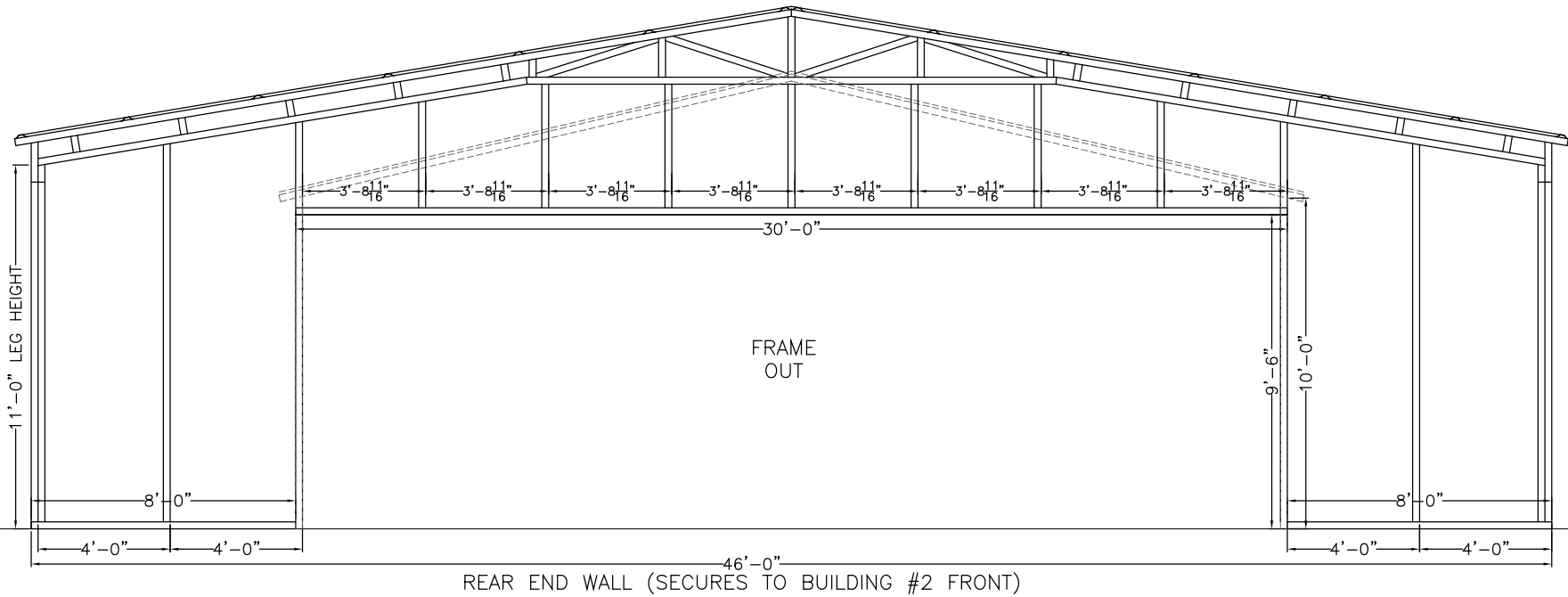
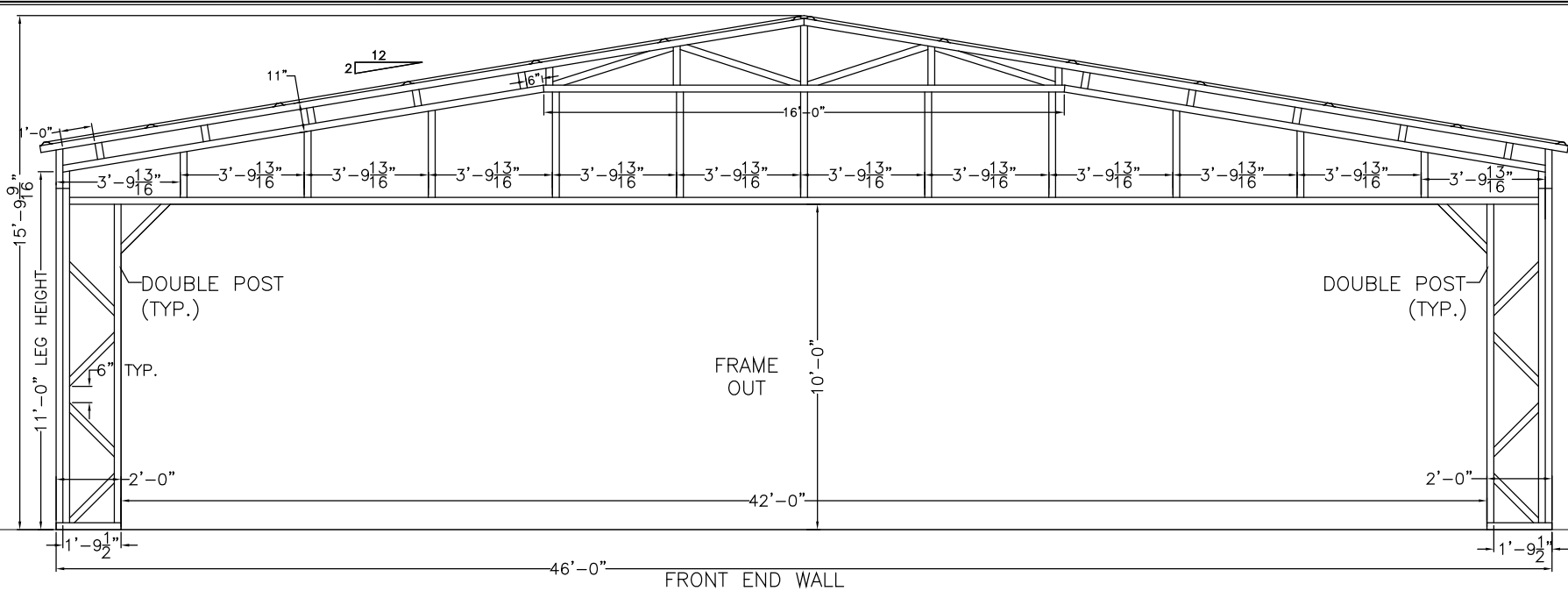
REV	DESCRIPTION	DATE	BY
1	ENDS F/O SIZES, DBL POSTS	3/24/25	MTB

DRAWN BY:	MTB
DATE:	3/20/25
LOCATION:	150 SW Cessna Ct, Lake City
SIZE:	50'L X 46'W X 11'H

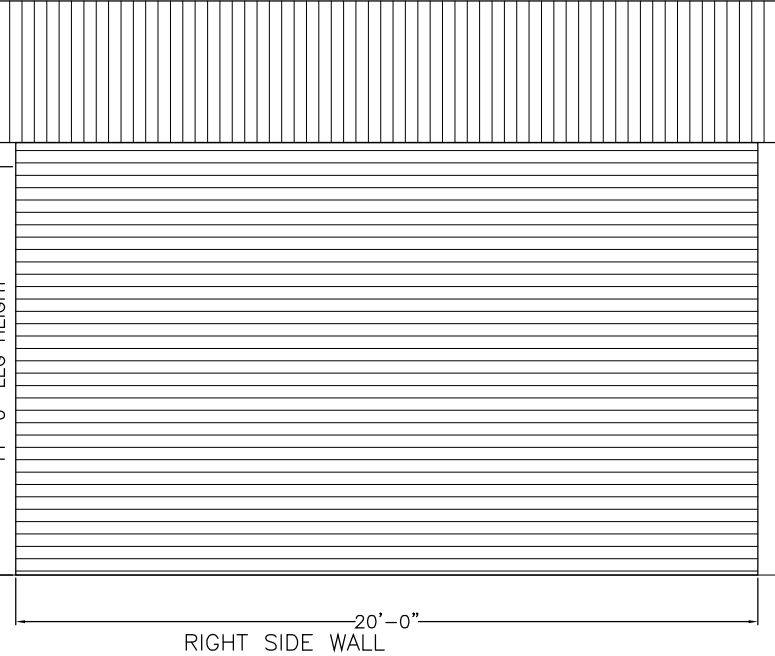
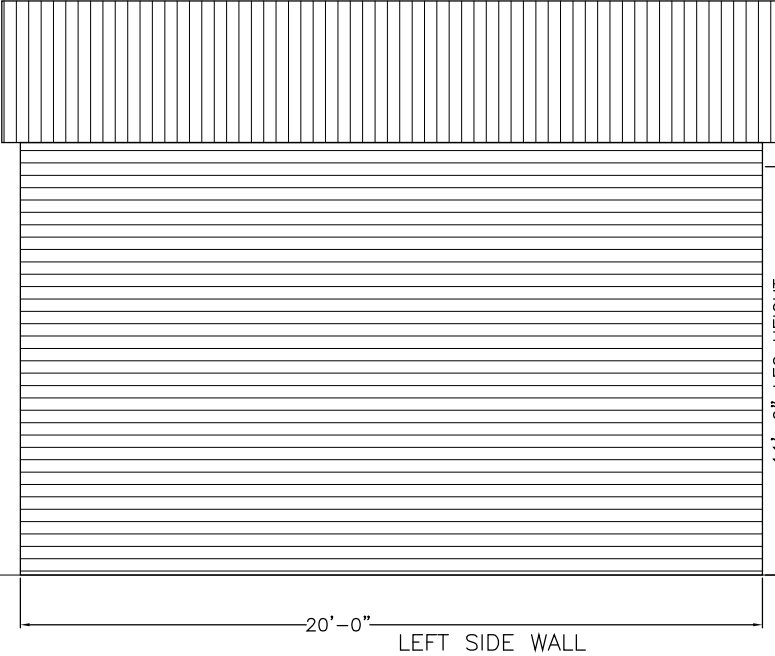
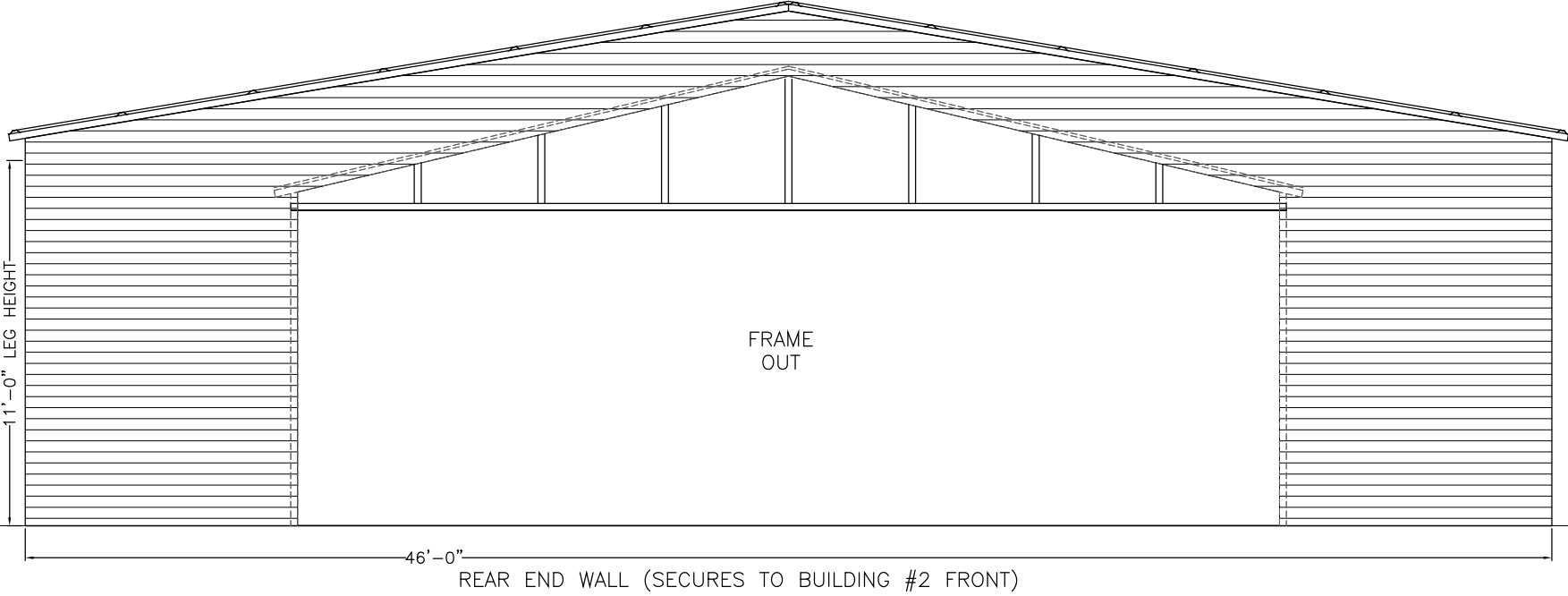
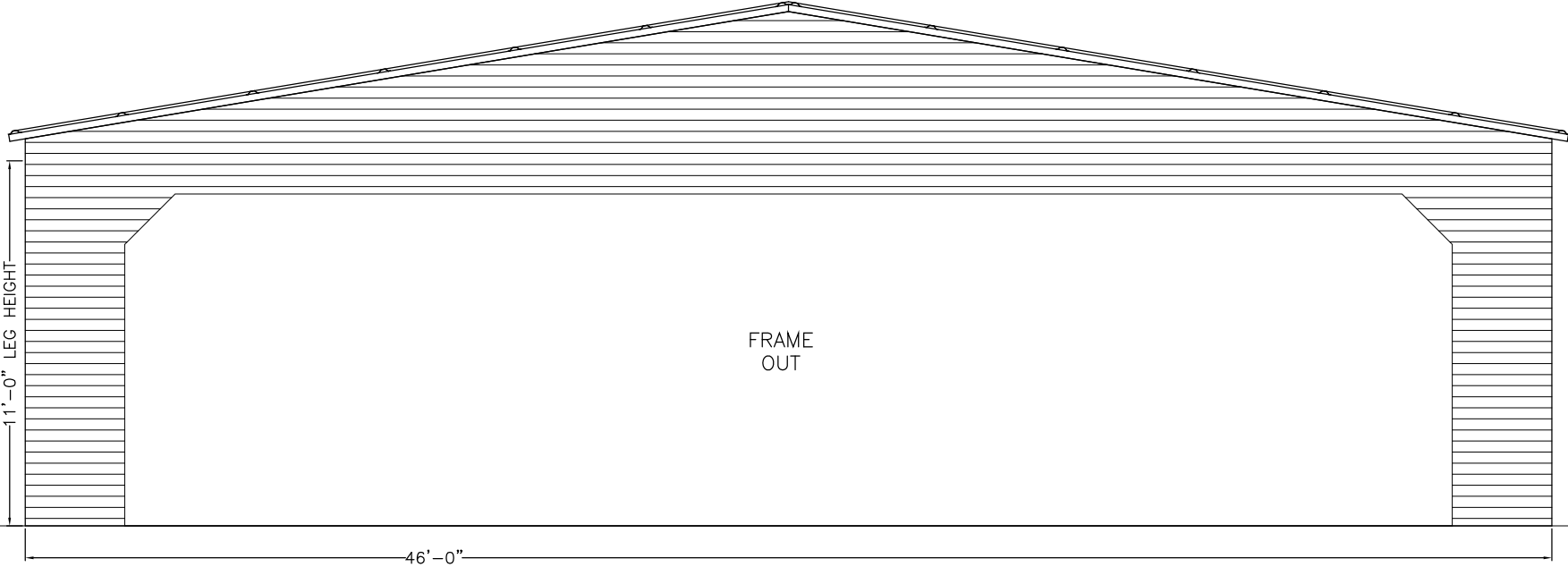
BUILDING #1 SIDE & END FRAMING VIEWS

Matthew T. Baldwin P.E.  
Florida License #64608

Sheet: 2 OF 6



THIS ITEM HAS BEEN DIGITALLY SIGNED AND SEALED BY MATTHEW T. BALDWIN, P.E. ON THE DATE ADJACENT TO THE SEAL. PRINTED COPIES OF THIS DOCUMENT ARE NOT CONSIDERED SIGNED AND SEALED AND THE SIGNATURE MUST BE VERIFIED ON ANY ELECTRONIC COPIES.



CODE INFORMATION	
CODE VERSION	FBC 2023 8th Edition, ASCE-7-22
MANUFACTURER	ALL METAL BUILDINGS
BUILDING TYPE	UTILITY STRUCTURE
CONSTRUCTION TYPE	II-B
RISK CATEGORY	I
FIRE PROTECTION	NONE
FIRE SUPPRESSION SYSTEM	NONE
OCCUPANCY	UTILITY, U
WIND SPEED	Vult-109mph
EXPOSURE	C
ENCLOSURE	ENCLOSED
INTERNAL PRESSURE COEFF.	+/- 0.18
IMPORTANCE FACTOR	1.0
ROOF DEAD LOAD	10PSF
ROOF LIVE LOAD	20PSF OR 300lb P.L.
FLOOR DEAD LOAD	10PSF
FLOOR LIVE LOAD	50PSF
"R" RATING OF WALLS, FLOOR, ROOF	N/A
MODULES PER BUILDING	1
HURRICANE PROTECTION USAGE	NO
HURRICANE SHELTER USAGE	NO
SQUARE FOOTAGE	1,820 SQ. FT.

REVISIONS			
REV	DESCRIPTION	DATE	BY
1	ENDS F/O SIZES, DBL POSTS	3/24/25	MTB

DRAWN BY:	MTB
DATE:	3/20/25
LOCATION:	150 SW Cessna Ct, Lake City
SIZE:	50'L X 46'W X 11'H

TITLE: BUILDING #1 SIDE & END VIEWS

Matthew T. Baldwin P.E.  
Florida License #64608

Sheet: 3 OF 6

THIS ITEM HAS BEEN DIGITALLY SIGNED AND SEALED BY MATTHEW T. BALDWIN, P.E. ON THE DATE ADJACENT TO THE SEAL. PRINTED COPIES OF THIS DOCUMENT ARE NOT CONSIDERED SIGNED AND SEALED AND THE SIGNATURE MUST BE VERIFIED ON ANY ELECTRONIC COPIES.



CODE INFORMATION

CODE VERSION	FBC 2023 8th Edition, ASCE-7-22
MANUFACTURER	ALL METAL BUILDINGS
BUILDING TYPE	UTILITY STRUCTURE
CONSTRUCTION TYPE	II-B
RISK CATEGORY	I
FIRE PROTECTION	NONE
FIRE SUPPRESSION SYSTEM	NONE
OCCUPANCY	UTILITY, U
WIND SPEED	Vult-109mph
EXPOSURE	C
ENCLOSURE	ENCLOSED
INTERNAL PRESSURE COEFF.	+/- 0.18
IMPORTANCE FACTOR	1.0
ROOF DEAD LOAD	10PSF
ROOF LIVE LOAD	20PSF OR 300lb P.L.
FLOOR DEAD LOAD	10PSF
FLOOR LIVE LOAD	50PSF
"R"RATING OF WALLS,FLOOR,ROOF	N/A
MODULES PER BUILDING	1
HURRICANE PROTECTION USAGE	NO
HURRICANE SHELTER USAGE	NO
SQUARE FOOTAGE	1,820 SQ. FT.

REVISIONS

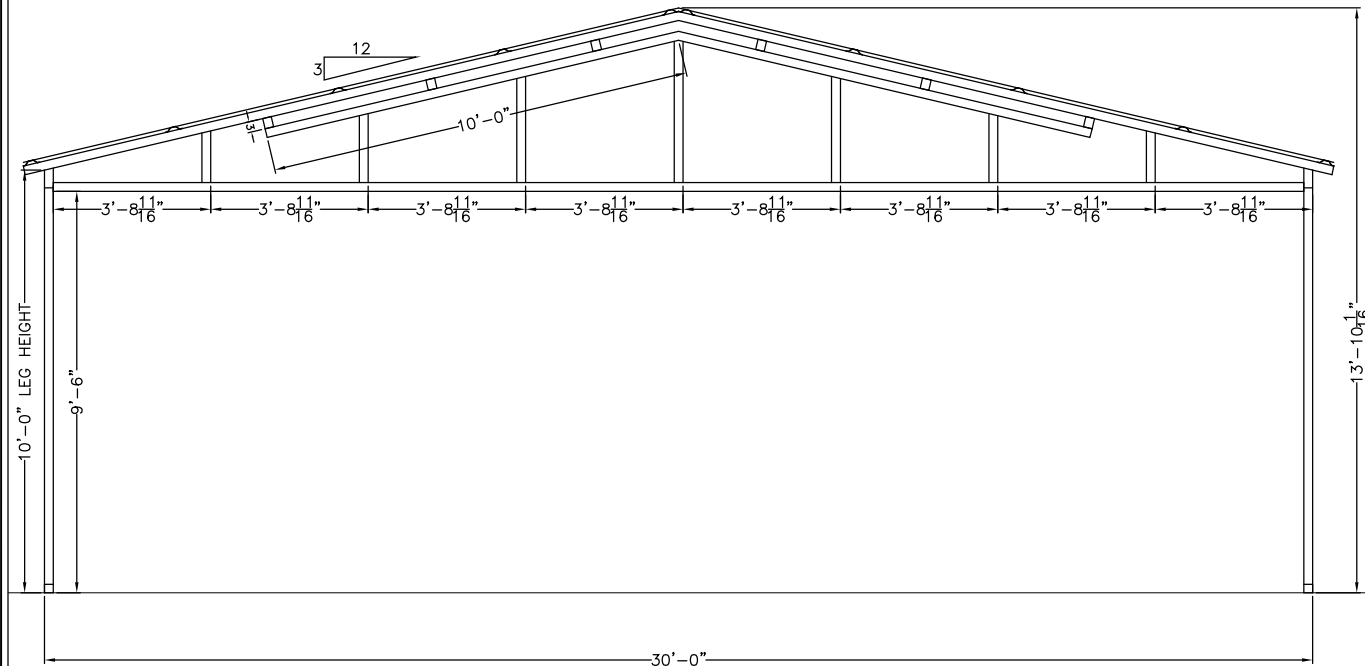
REV	DESCRIPTION	DATE	BY
1	ENDS F/O SIZES, DBL POSTS	3/24/25	MTB

DRAWN BY:	MTB
DATE:	3/20/25
LOCATION:	150 SW Cessna Ct, Lake City
SIZE:	50'L X 46'W X 11'H

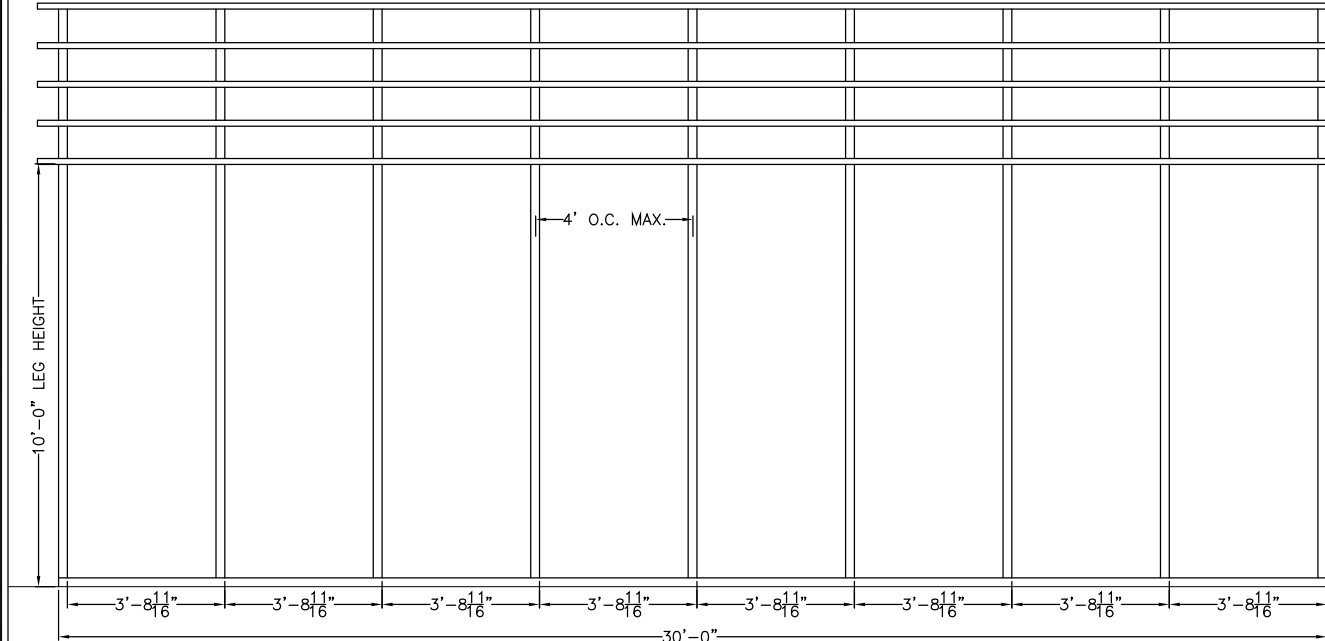
BUILDING #2 SIDE & END FRAMING VIEWS

Matthew T. Baldwin P.E.  
Florida License #64608

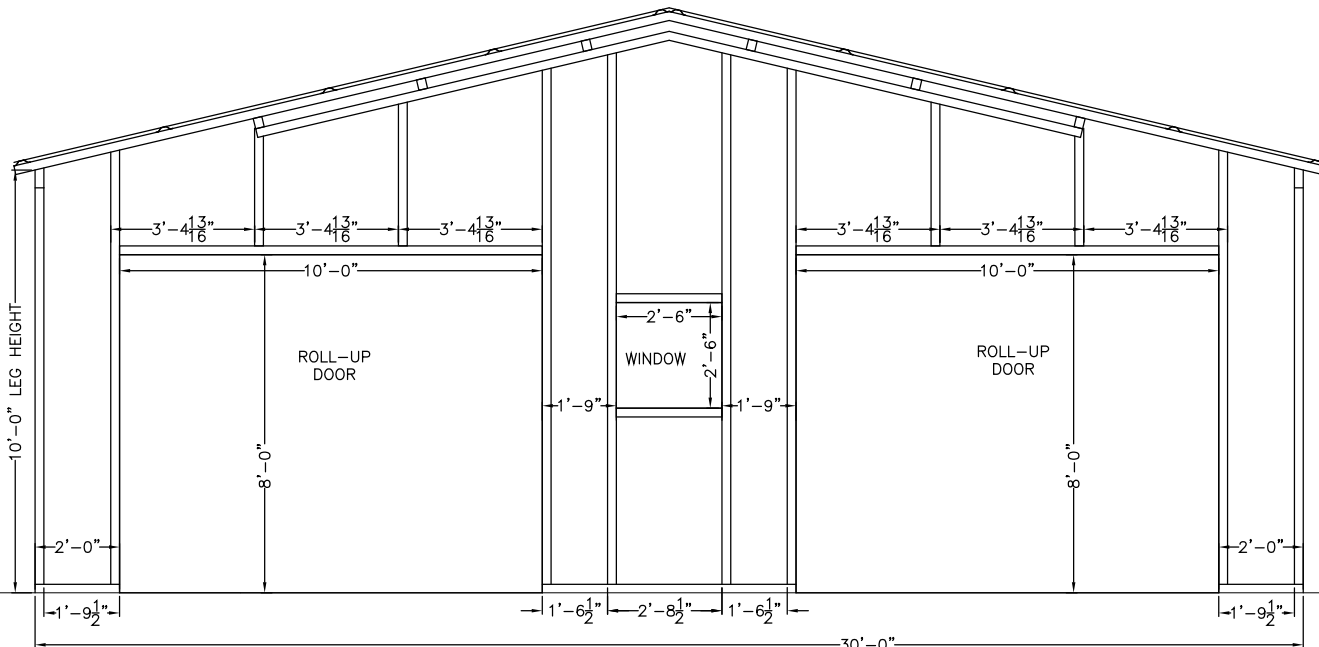
Sheet: 4 OF 6



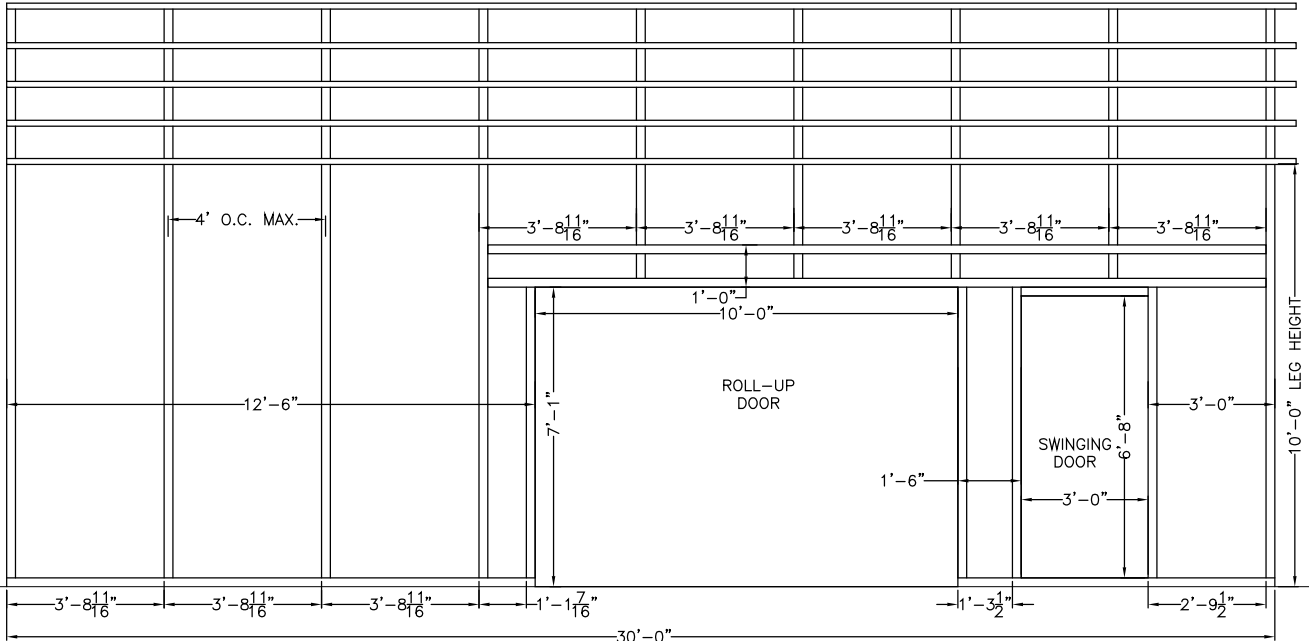
FRONT END WALL (SECURES TO BUILDING #1 REAR)



LEFT SIDE WALL



REAR END WALL



RIGHT SIDE WALL

THIS ITEM HAS BEEN DIGITALLY SIGNED AND SEALED BY MATTHEW T. BALDWIN, P.E. ON THE DATE ADJACENT TO THE SEAL. PRINTED COPIES OF THIS DOCUMENT ARE NOT CONSIDERED SIGNED AND SEALED AND THE SIGNATURE MUST BE VERIFIED ON ANY ELECTRONIC COPIES.



CODE INFORMATION

CODE VERSION	FBC 2023 8th Edition, ASCE-7-22
MANUFACTURER	ALL METAL BUILDINGS
BUILDING TYPE	UTILITY STRUCTURE
CONSTRUCTION TYPE	II-B
RISK CATEGORY	I
FIRE PROTECTION	NONE
FIRE SUPPRESSION SYSTEM	NONE
OCCUPANCY	UTILITY, U
WIND SPEED	Vult-109mph
EXPOSURE	C
ENCLOSURE	ENCLOSED
INTERNAL PRESSURE COEFF.	+/- 0.18
IMPORTANCE FACTOR	1.0
ROOF DEAD LOAD	10PSF
ROOF LIVE LOAD	20PSF OR 300lb P.L.
FLOOR DEAD LOAD	10PSF
FLOOR LIVE LOAD	50PSF
"R" RATING OF WALLS,FLOOR,ROOF	N/A
MODULES PER BUILDING	1
HURRICANE PROTECTION USAGE	NO
HURRICANE SHELTER USAGE	NO
SQUARE FOOTAGE	1,820 SQ. FT.

REVISIONS

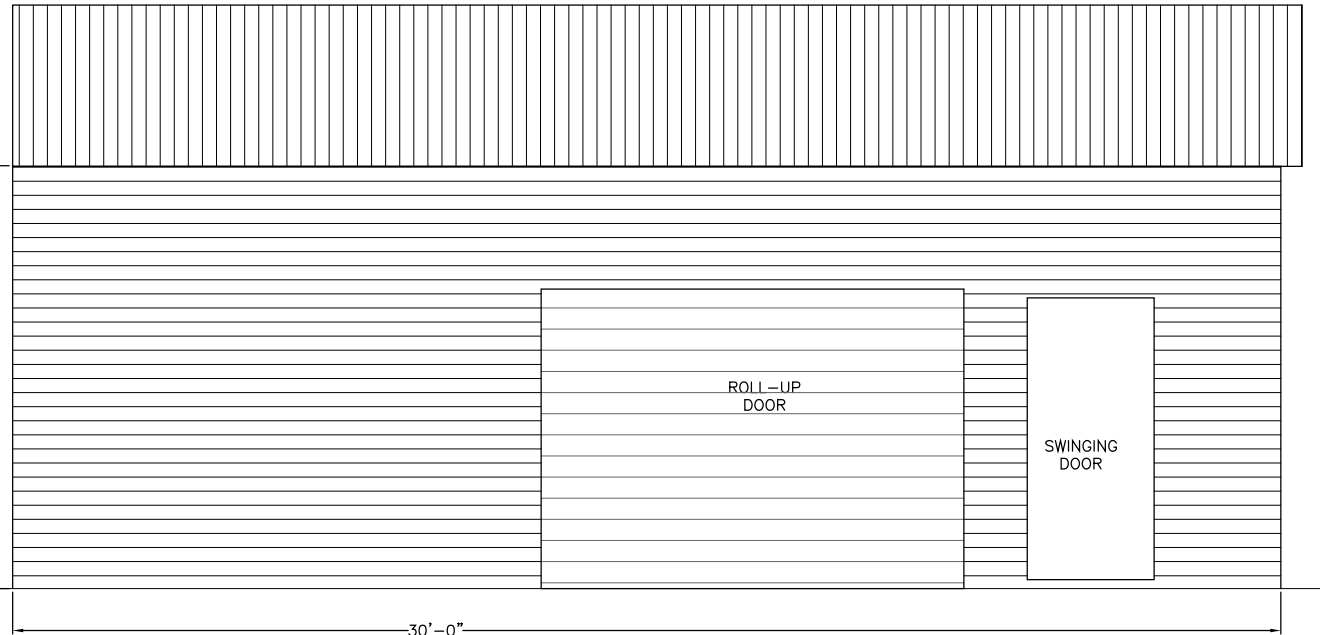
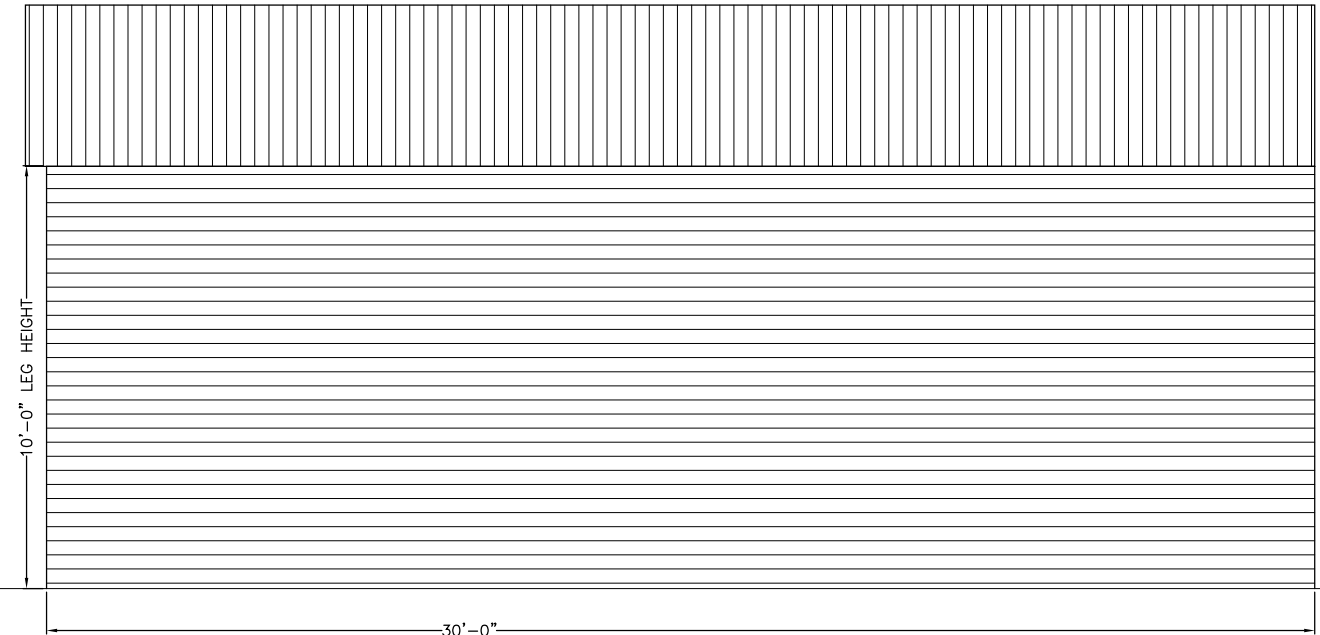
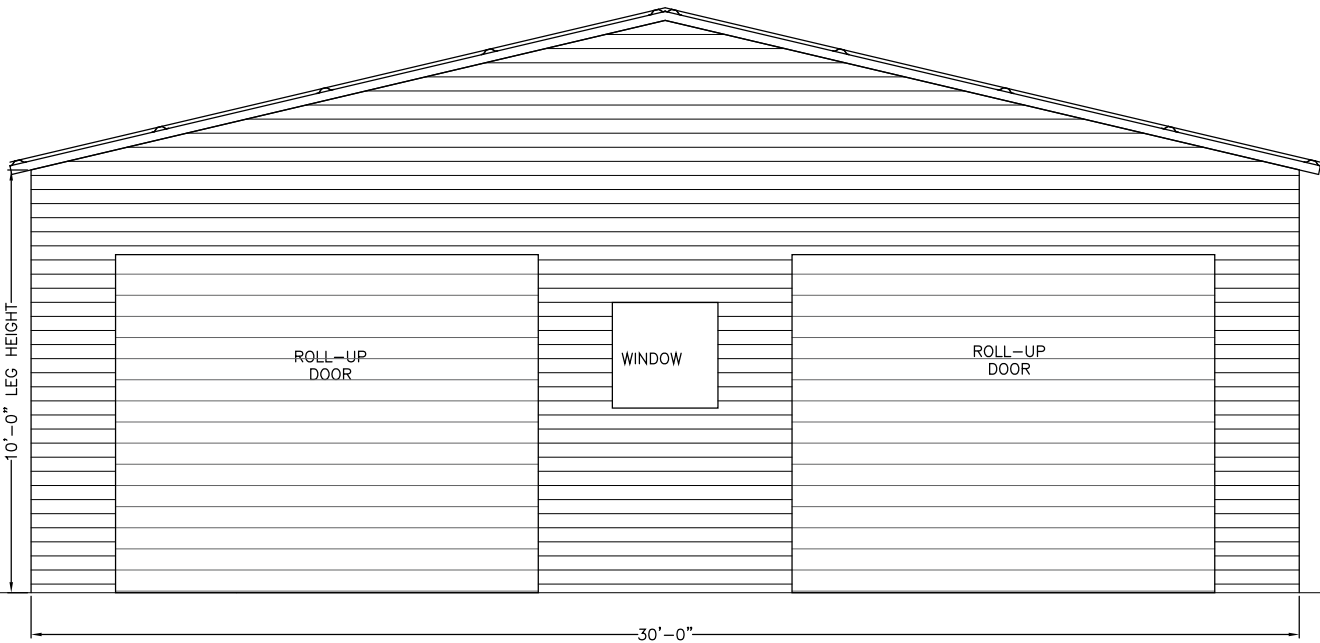
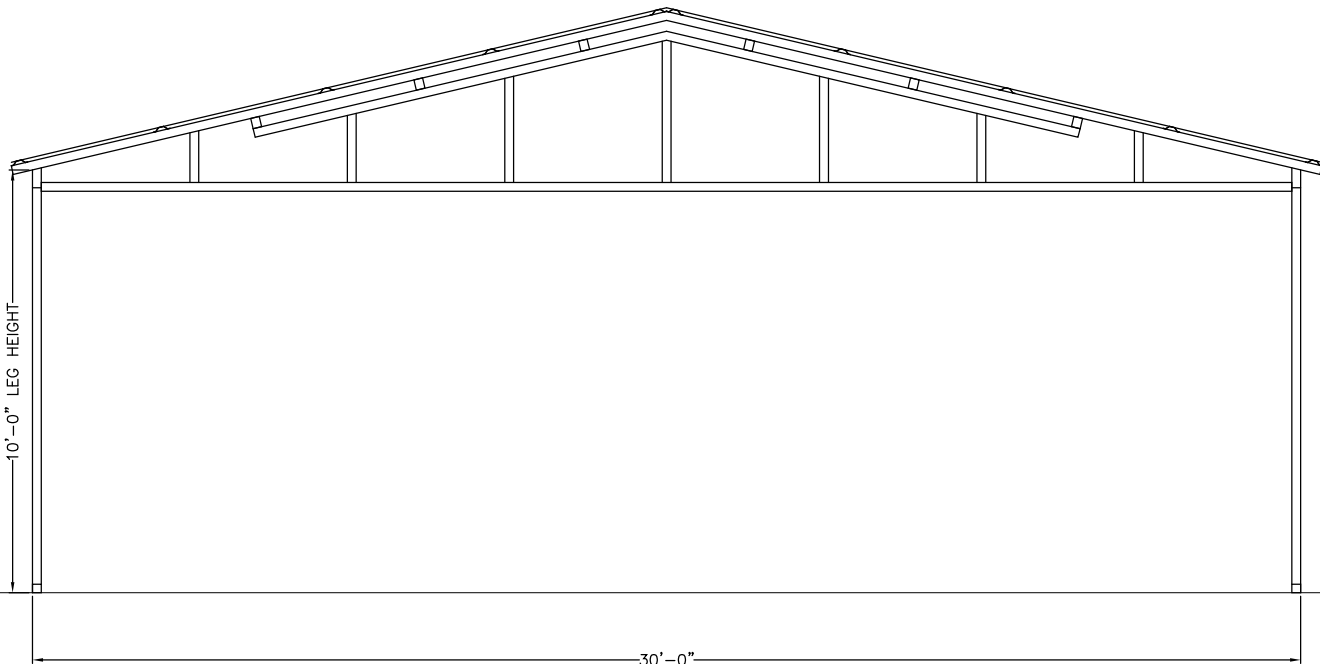
REV	DESCRIPTION	DATE	BY
1	ENDS F/O SIZES, DBL POSTS	3/24/25	MTB

DRAWN BY:	MTB
DATE:	3/20/25
LOCATION:	150 SW Cessna Ct, Lake City
SIZE:	50'L X 46'W X 11'H

BUILDING #2 SIDE & END VIEWS

Matthew T. Baldwin P.E.  
Florida License #64608

Sheet: 5 OF 6



THIS ITEM HAS BEEN DIGITALLY SIGNED AND SEALED BY MATTHEW T. BALDWIN, P.E. ON THE DATE ADJACENT TO THE SEAL. PRINTED COPIES OF THIS DOCUMENT ARE NOT CONSIDERED SIGNED AND SEALED AND THE SIGNATURE MUST BE VERIFIED ON ANY ELECTRONIC COPIES.



CODE INFORMATION

CODE VERSION	FBC 2023 8th Edition, ASCE-7-22
MANUFACTURER	ALL METAL BUILDINGS
BUILDING TYPE	UTILITY STRUCTURE
CONSTRUCTION TYPE	II-B
RISK CATEGORY	I
FIRE PROTECTION	NONE
FIRE SUPPRESSION SYSTEM	NONE
OCCUPANCY	UTILITY, U
WIND SPEED	Vult-109mph
EXPOSURE	C
ENCLOSURE	ENCLOSED
INTERNAL PRESSURE COEFF.	+/- 0.18
IMPORTANCE FACTOR	1.0
ROOF DEAD LOAD	10PSF
ROOF LIVE LOAD	20PSF OR 300lb P.L.
FLOOR DEAD LOAD	10PSF
FLOOR LIVE LOAD	50PSF
"R" RATING OF WALLS, FLOOR, ROOF	N/A
MODULES PER BUILDING	1
HURRICANE PROTECTION USAGE	NO
HURRICANE SHELTER USAGE	NO
SQUARE FOOTAGE	1,820 SQ. FT.

REVISIONS

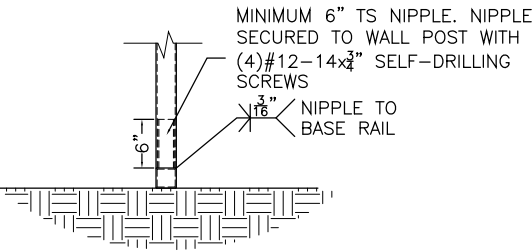
REV	DESCRIPTION	DATE	BY
1	ENDS F/O SIZES, DBL POSTS	3/24/25	MTB

DRAWN BY:	MTB
DATE:	3/20/25
LOCATION:	150 SW Cessna Ct, Lake City
SIZE:	50'L X 46'W X 11'H

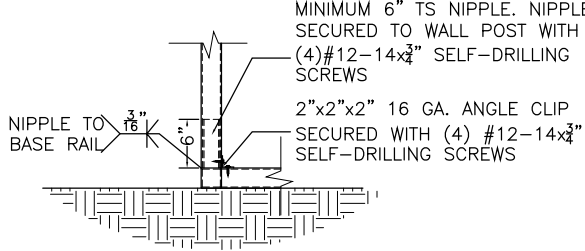
TITLE: DETAILS

Matthew T. Baldwin P.E.  
Florida License #64608

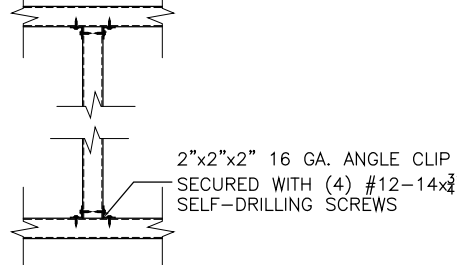
Sheet: 6 OF 6



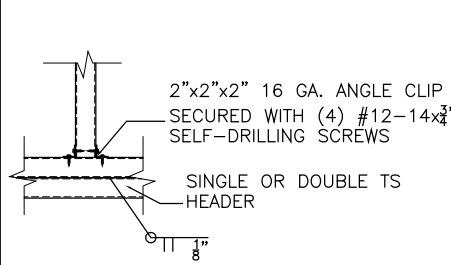
POST TO BASE RAIL  
CONNECTION



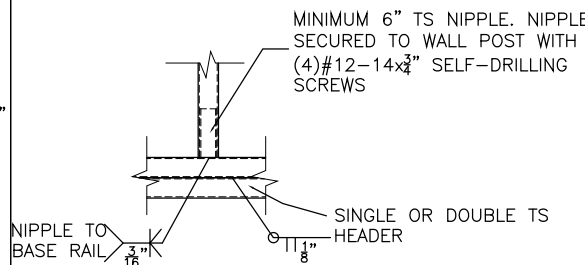
END POST TO BASE RAIL  
CONNECTION



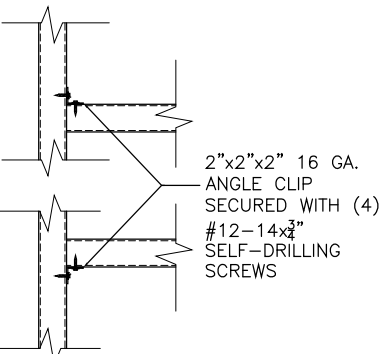
INTERMEDIATE POST TO  
HEADER/BASE RAIL/OR  
WINDOW RAIL DETAIL



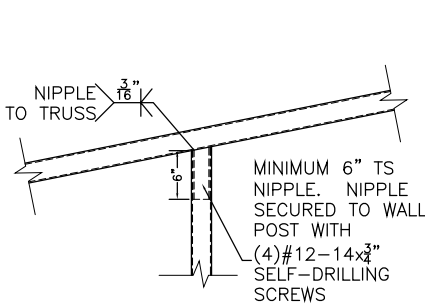
HEADER CONNECTION  
DETAIL OPTION 1



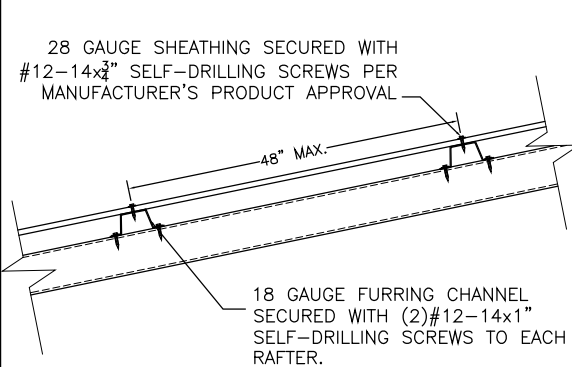
HEADER CONNECTION DETAIL  
OPTION 2



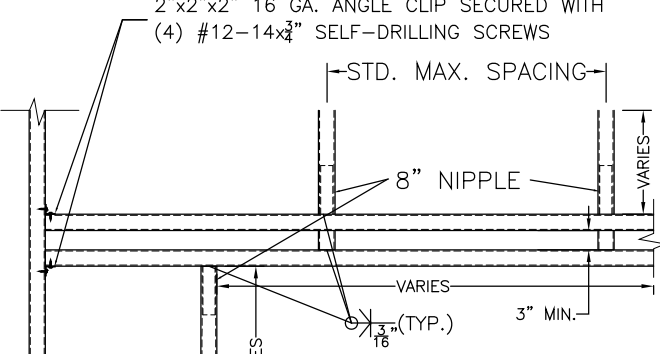
NON-STRUCTURAL  
HEADER OR WINDOW  
RAIL TO POST DETAIL



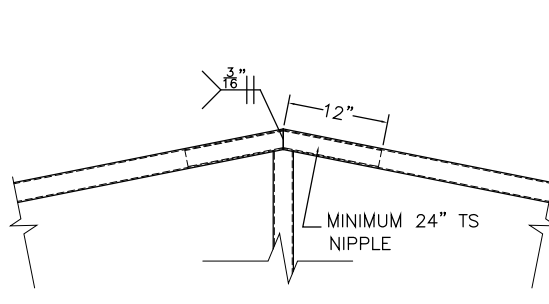
POST TO TRUSS  
CONNECTION



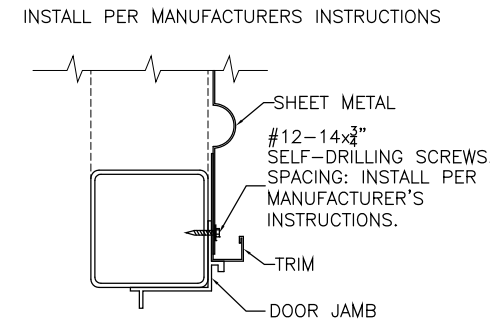
WALL/ROOF PANEL CONNECTION  
VERTICAL SHEATHING OPTION



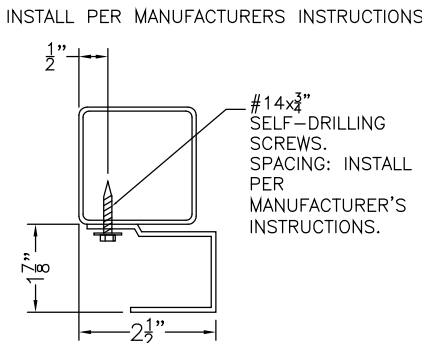
SIDE WALL ROLL-UP  
DOOR/FRAME OUT  
HEADER DETAIL



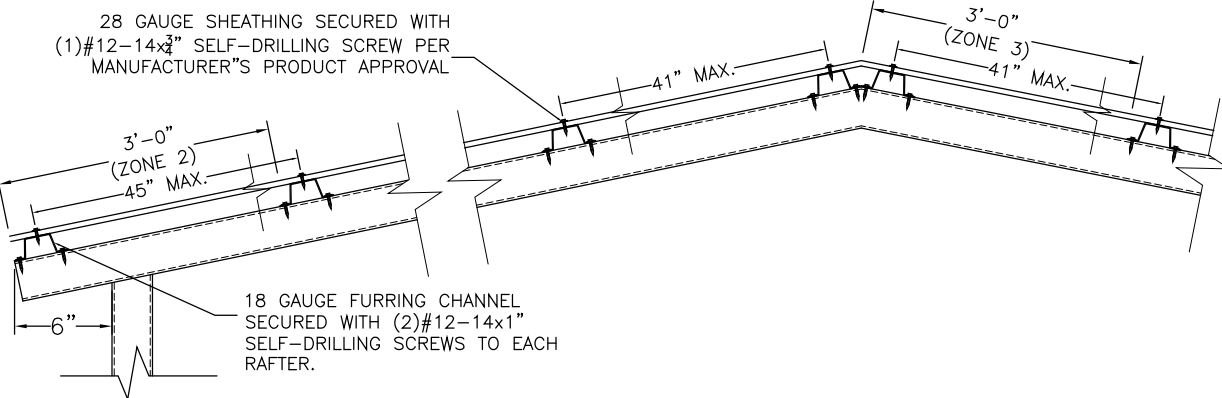
RAFTER CONNECTION  
DETAIL



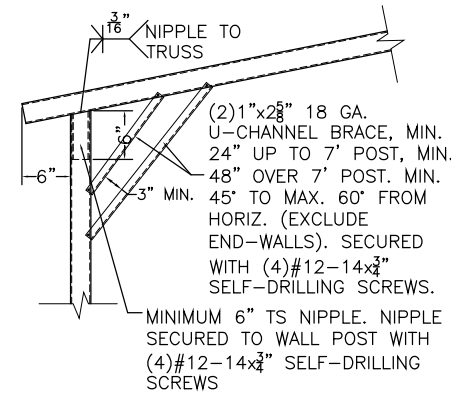
DOOR FRAME TO POST  
CONNECTION



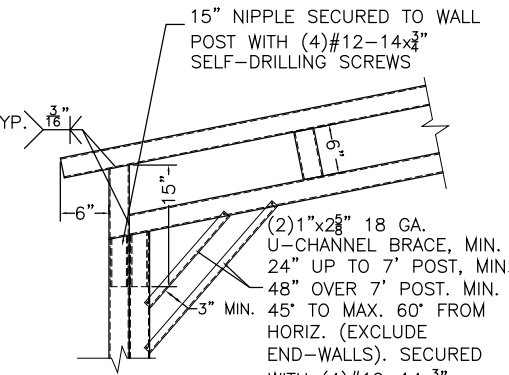
ROLL-UP DOOR TO  
POST CONNECTION



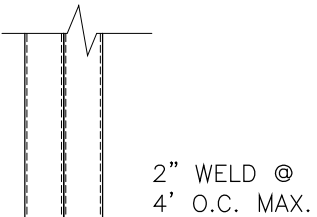
EAVE & RIDGE REINFORCED ROOF PANEL CONNECTION  
(ZONE 2&3)



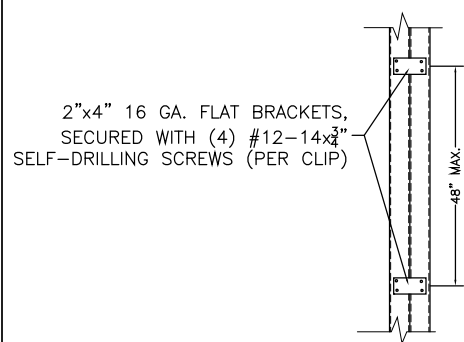
BOX EAVE RAFTER TO  
POST CONNECTION DETAIL



31'-51' BOX EAVE RAFTER  
TO POST CONNECTION DETAIL



DOUBLE POST/  
DOUBLE BASE RAIL



BUILDING TO BUILDING  
CONNECTION

APPROVED PRODUCTS	APPROVAL NO.
ROOF SHEATHING USA STEEL BUILDINGS INC. R PANEL	FL13364.1
WALL SHEATHING USA STEEL BUILDINGS INC. R PANEL	FL13364.1
WINDOW POCOHONTAS ALUMINUM COMPANY, INC. MODEL 100VS	FL12940.1
SWINGING DOOR ELIXER DOOR AND METAL COMPANY 407 STEEL DOOR	FL17996.5
SWINGING DOOR THERMA-TRU BENCHMARK DOOR	FL17540.1
ROLL-UP DOOR JANUS INTERNATIONAL CORPORATION SERIES 3652	FL21450.6
ROLL-UP DOOR JANUS INTERNATIONAL CORPORATION SERIES 3100-IM: MAX. 16'x20'	FL21450.4
ROLL-UP DOOR JANUS INTERNATIONAL CORPORATION SERIES 3100	FL21450.3
ROLL-UP DOOR JANUS INTERNATIONAL CORPORATION SERIES 3100	FL21450.3
ROLL-UP DOOR JANUS INTERNATIONAL CORPORATION SERIES 750: MAX. 8'8"x12'	FL21450.10
ROLL-UP DOOR JANUS INTERNATIONAL CORPORATION SERIES 750: MAX. 10'x12'	FL21450.11

BUILDING #1

Enclosed	Design Pressures			109 mph	
Zone			'a' dim.= 3ft	V <sub>ult</sub> Wind Speed	
Roof			Wall		
1	2	3	4	5	
9.6	12.9	12.9	12.9	15.5	
-9.9	-46.4	-55.2	-14.3	-19.5	

BUILDING #2

Enclosed <b>Design Pressures</b>			109 mph	
Zone      'a' dim.= 3ft			V <sub>ult</sub> Wind Speed	
Roof			Wall	
1	2	3	4	5
9.6	12.5	12.5	12.5	15.1
-9.7	-45.2	-53.8	-14.0	-19.0

THIS ITEM HAS BEEN DIGITALLY SIGNED AND SEALED BY MATTHEW T. BALDWIN, P.E. ON THE DATE ADJACENT TO THE SEAL. PRINTED COPIES OF THIS DOCUMENT ARE NOT CONSIDERED SIGNED AND SEALED AND THE SIGNATURE MUST BE VERIFIED ON ANY ELECTRONIC COPIES.