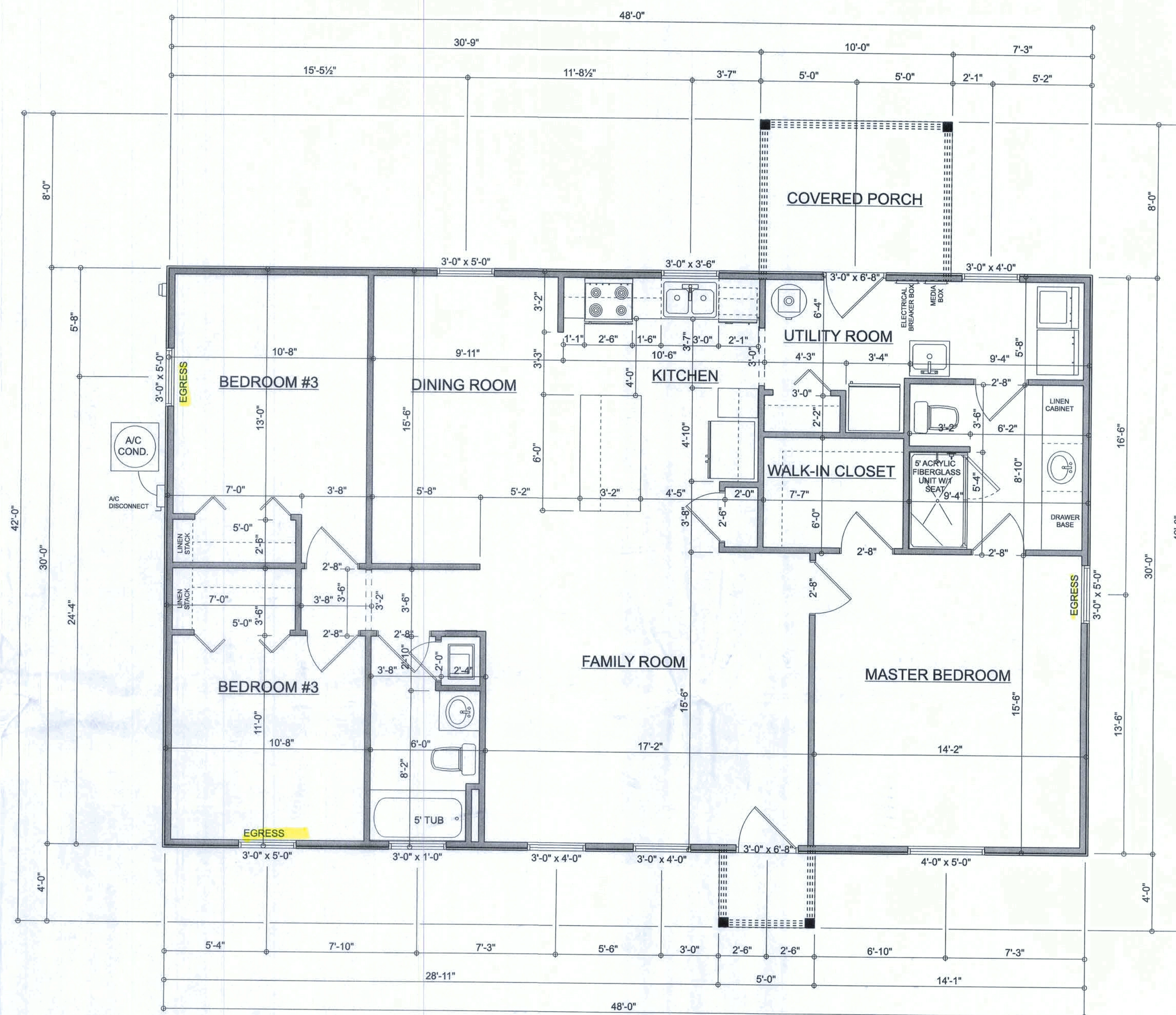
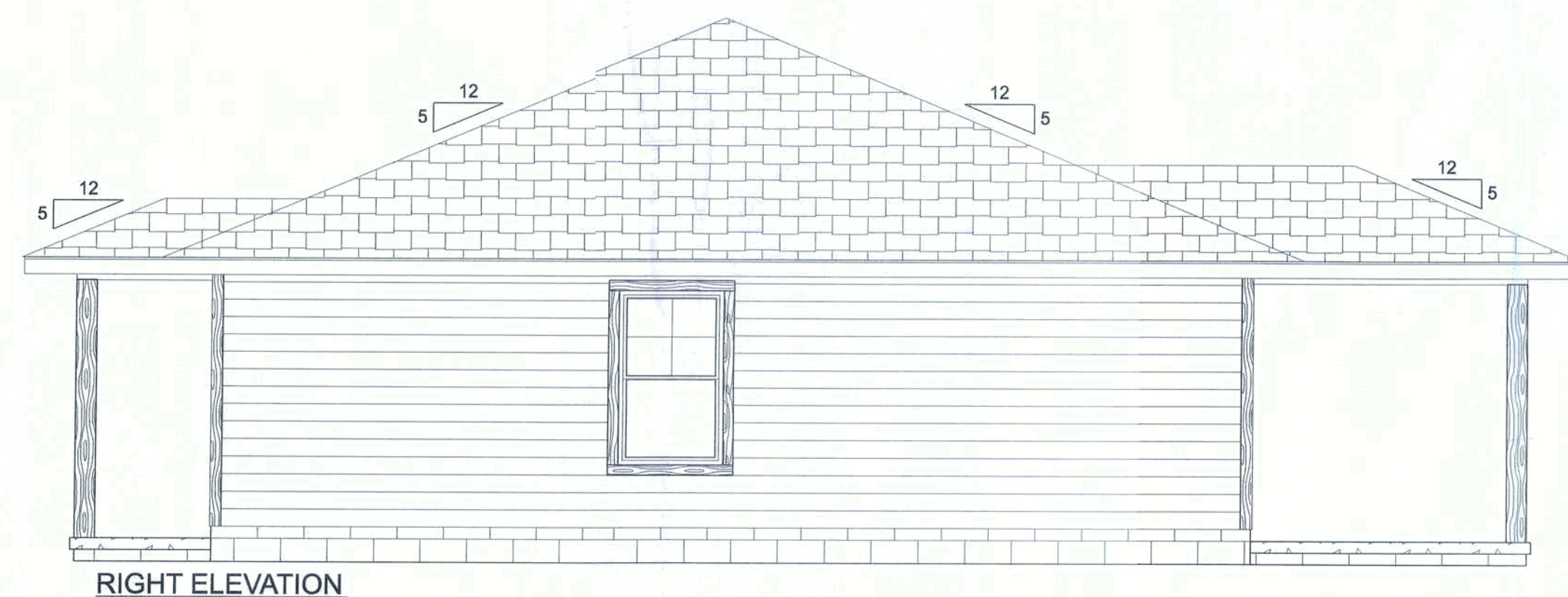
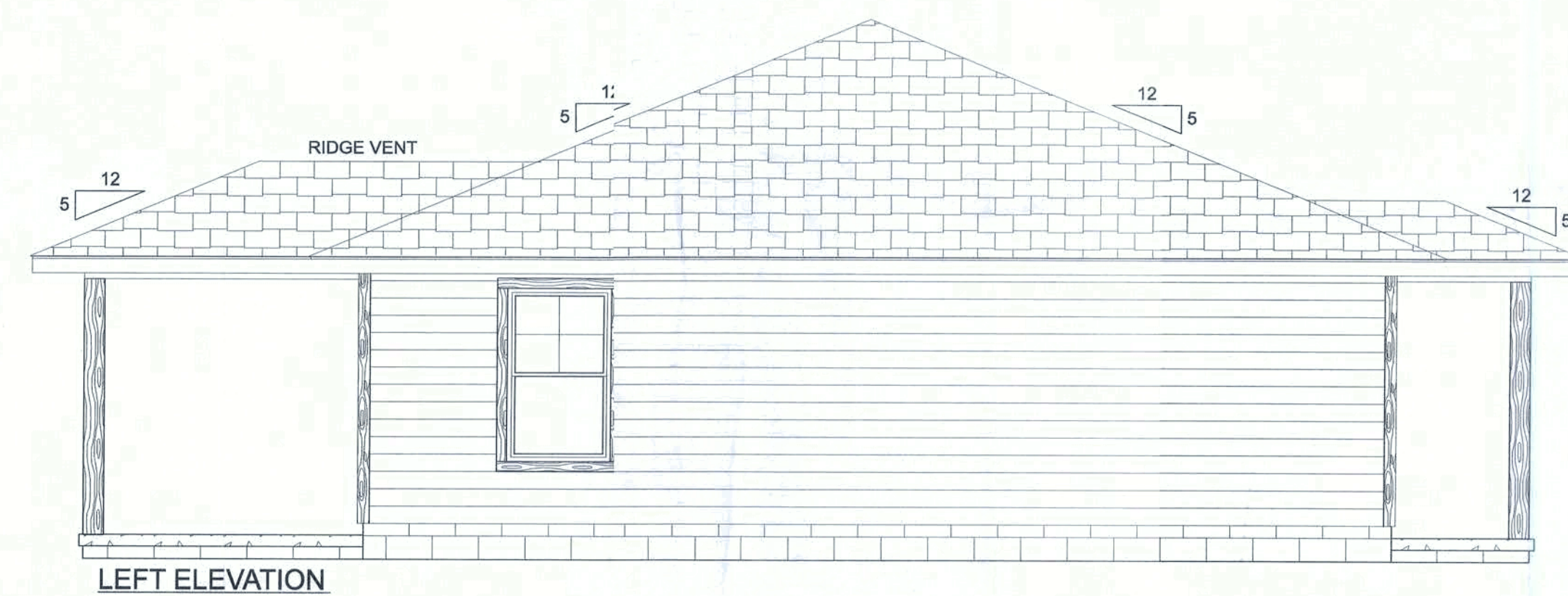
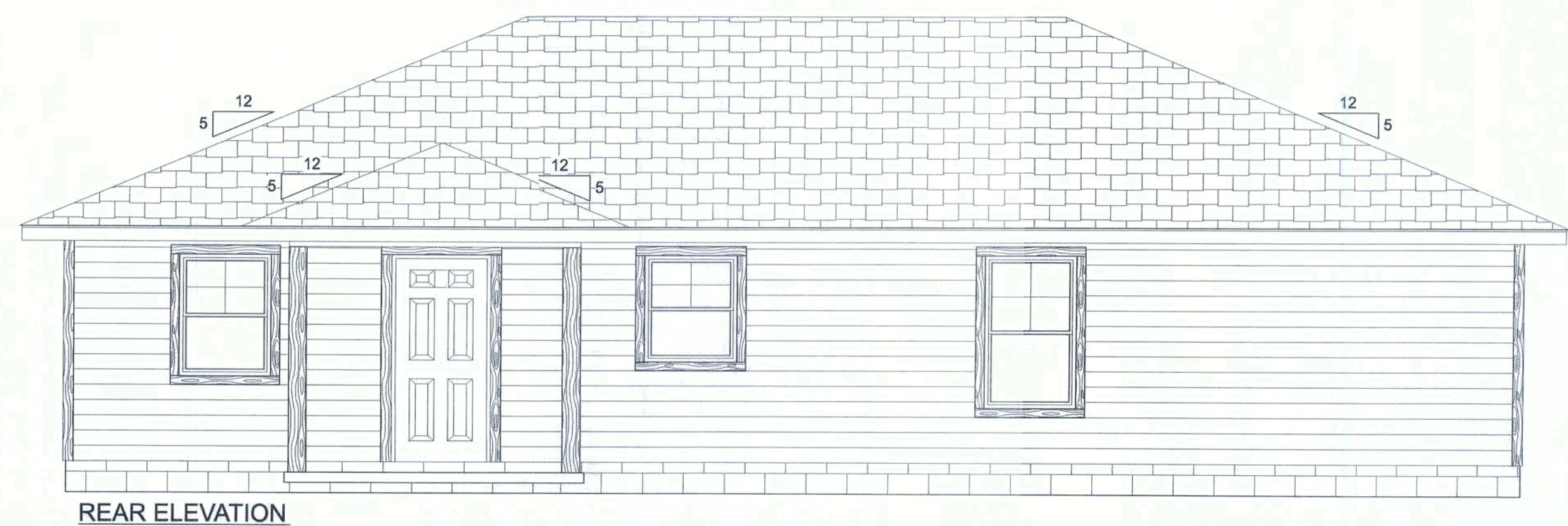
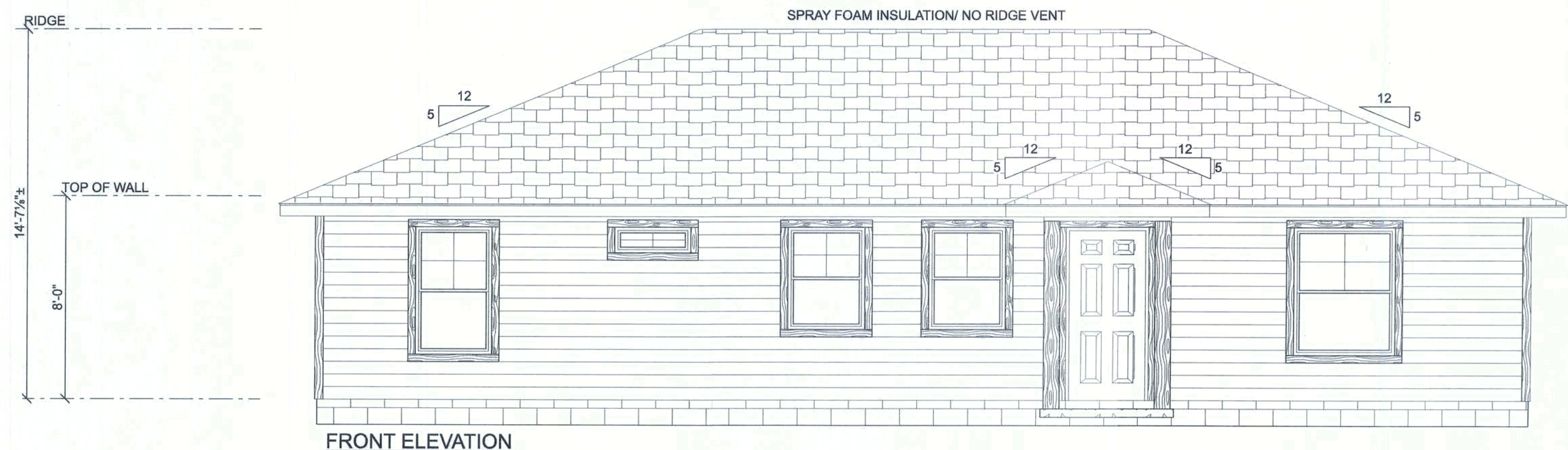


REVISIONS	

SOFTPLAN
ARCHITECTURAL DESIGN SOFTWARE



NOTE: ALL 8' CEILINGS THROUGHOUT

AREA SUMMARY

LIVING AREA	1,440 S. F.
PORCH AREA	100 S. F.
TOTAL AREA	1,540 S. F.



Eringer Construction
Group

Grace Richards
Residence

ADDRESS:
173 SW Wigwam Court
Fort White, FL 32038
Columbia County, Florida

PRINTED DATE:

2020-07-21

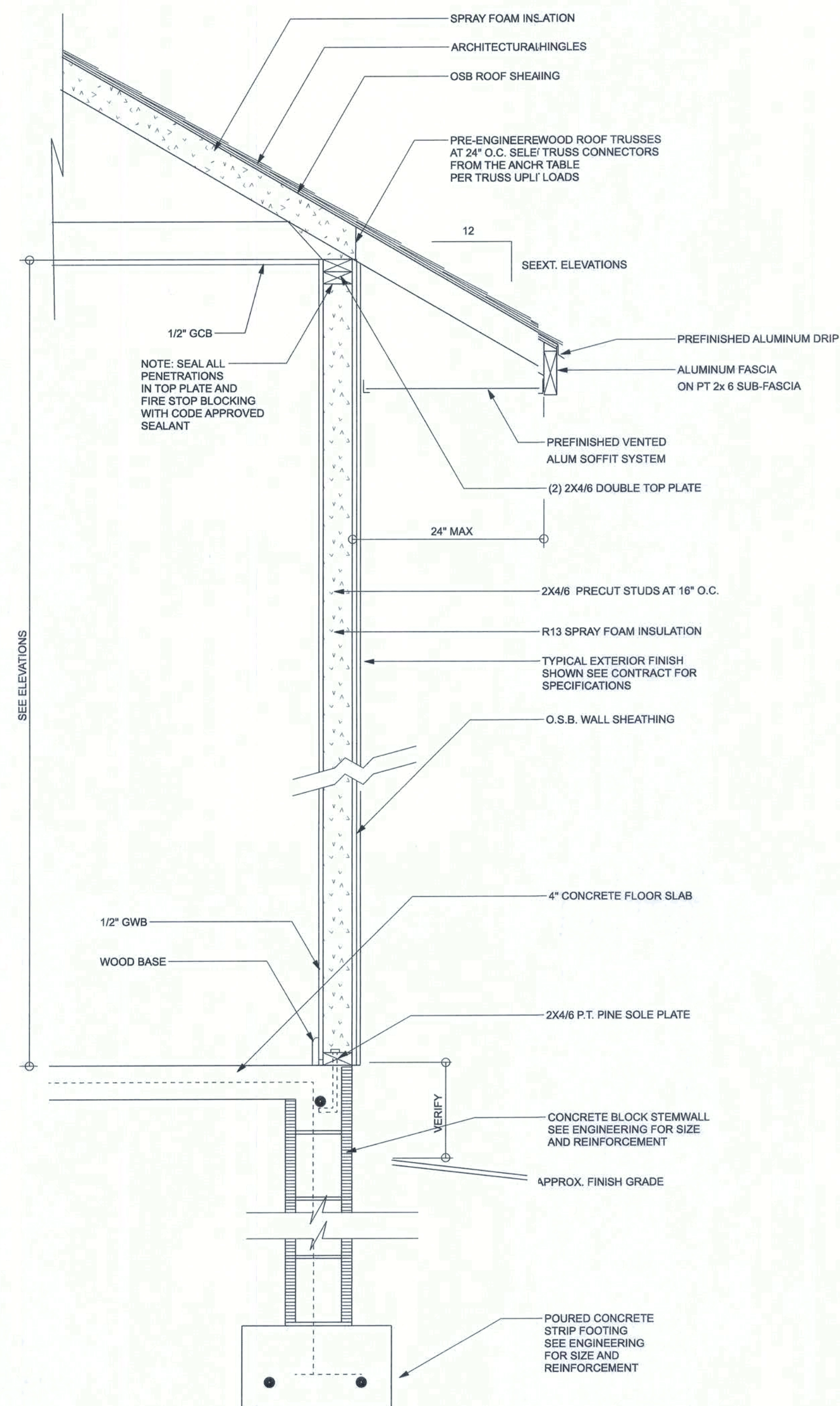
DRAWN BY:

Matthew A. Eringer Sr.

DRAWING NUMBER

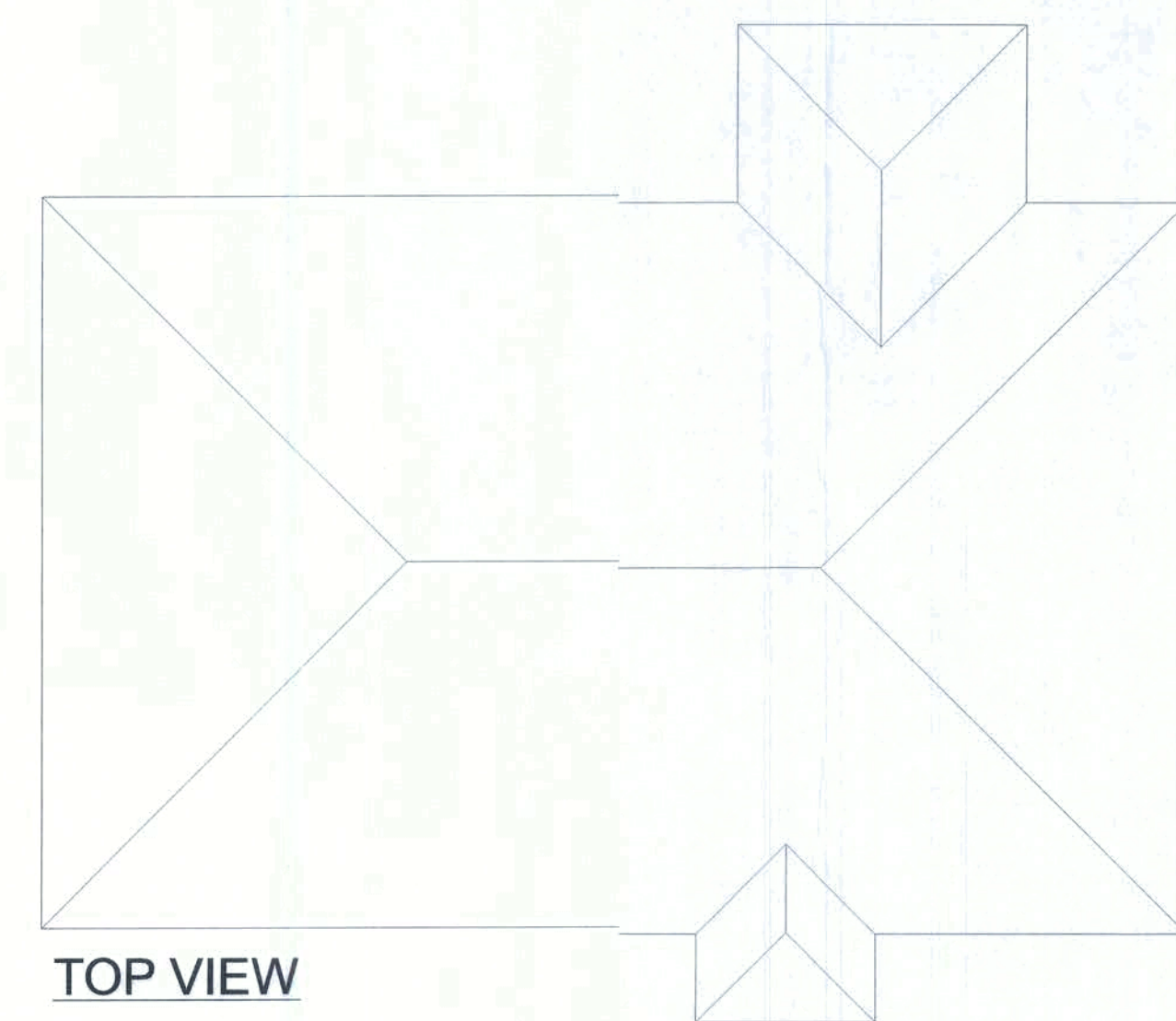
#1

OF 2 SHEETS

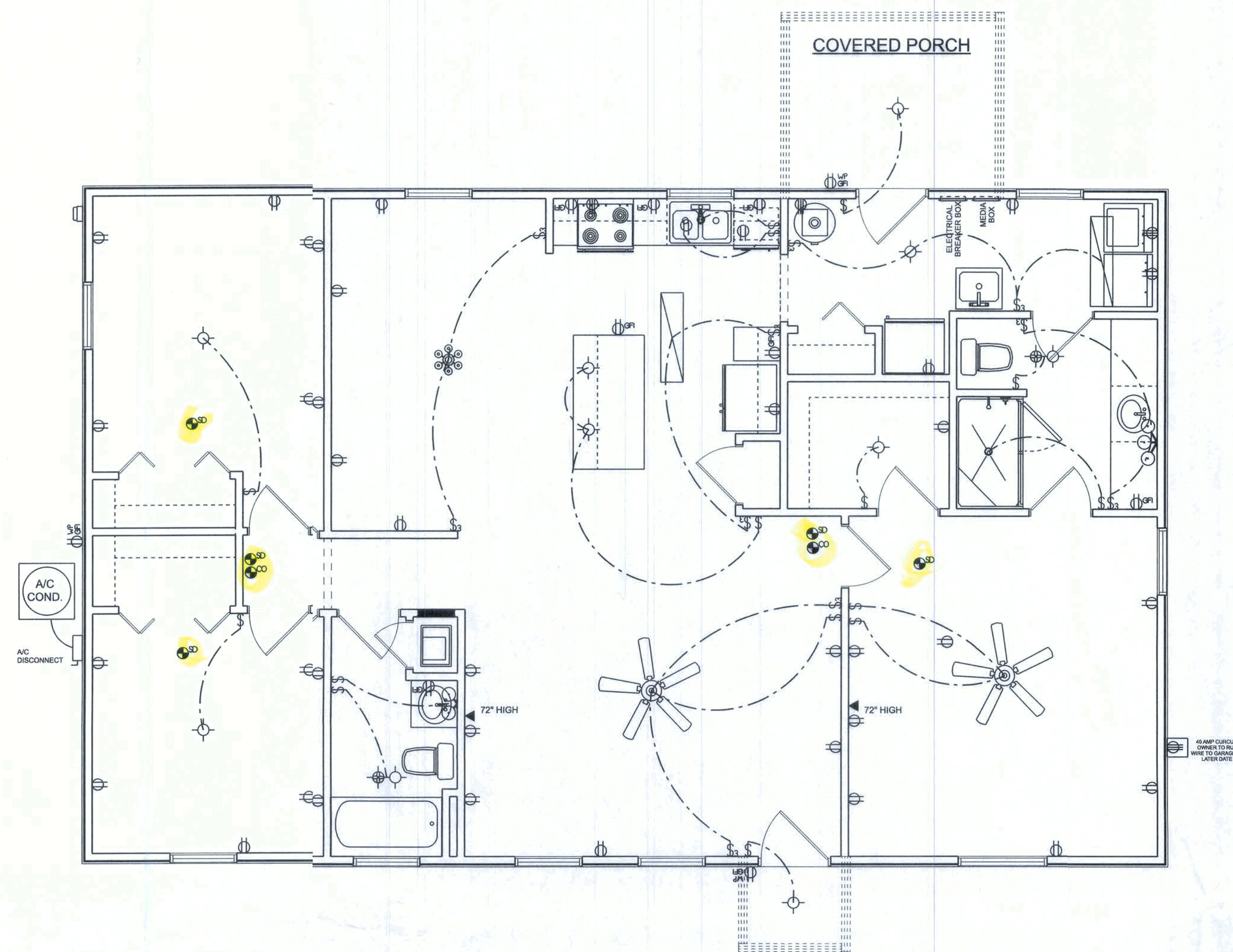


TYPICAL DESIGN WALL SECTION
NON - STRUCTURAL DATA

SCALE: 1" = 1'-0"



TOP VIEW



ELECTRICAL PLAN NOTES:

- E-1 WIRE ALL APPLIANCES, HVAC UNITS AND OTHER EQUIPMENT PER MANUF. SPECIFICATIONS.
- E-2 CONSULT THE OWNER FOR THE NUMBER OF SEPARATE TELEPHONE LINES TO BE INSTALLED.
- E-3 ALL INSTALLATIONS SHALL BE PER NATL. ELECTRIC CODE.
- E-4 ALL SMOKE DETECTORS SHALL BE 120V W/ BATTERY BACKUP OF THE PHOTOELECTRIC TYPE, AND SHALL BE INTERLOCKED TOGETHER. INSTALL INSIDE AND NEAR ALL BEDROOMS.
- E-5 TELEPHONE, TELEVISION AND OTHER LOW VOLTAGE DEVICES OR OUTLETS SHALL BE AS PER THE OWNER'S DIRECTIONS, & IN ACCORDANCE W/ APPLICABLE SECTIONS OF NEC LATEST EDITION.
- E-6 ELECTRICAL CONTR' SHALL BE RESPONSIBLE FOR THE DESIGN & SIZING OF ELECTRICAL SERVICE AND CIRCUITS.
- E-7 ENTRY OF SERVICE (UNDERGROUND OR OVERHEAD) TO BE DETERMINED BY POWER COMPANY.
- E-8 ALL 120-VOLT, SINGLE-PHASE, 15- AND 20-AMPERE BRANCH CIRCUITS SUPPLYING OUTLETS INSTALLED IN DWELLING UNIT FAMILY ROOMS, DINING ROOMS, LIVING ROOMS, PARLORS, LIBRARIES, DEN, BEDROOMS, SUN ROOMS, RECREATION ROOMS, CLOSETS, HALLWAYS, OR SIMILAR ROOMS OR AREAS SHALL BE PROTECTED BY A LISTED ARC-FAULT CIRCUIT INTERRUPTER, COMBINATION-TYPE INSTALLED TO PROVIDE PROTECTION OF THE BRANCH CIRCUIT.
- E-9 ALL OUTLETS TO BE LOCATED ABOVE BASE FLOOD ELEVATION.
- E-10 A SERVICE DISCONNECT WITH OVER CURRENT PROTECTION SHALL BE INSTALLED OUTSIDE OF THE BUILDING, ON THE LOAD SIDE OF THE METER, AT THE PLACE ELECTRIC CONDUCTORS ENTER THE BUILDING. SERVICE ENTRANCE CONDUCTORS MAY NOT BE LOCATED INSIDE OF THE BUILDING WITHOUT SPECIAL APPROVAL OF THE BUILDING OFFICIAL.
- E-11 CARBON MONOXIDE ALARMS SHALL BE REQUIRED WITHIN 10' OF ALL ROOMS FOR SLEEPING PURPOSES IN BUILDINGS HAVING A FOSSIL-FUEL-BURNING HEATER OR APPLIANCE, A FIREPLACE, OR ATTACHED GARAGE.
- E-12 ALL OUTLETS LOCATED IN RESIDENTIAL TO BE TAMPER-RESISTANT PER NEC.
- E-13 A MINIMUM OF 75% OF PERMANENTLY INSTALLED LAMPS OR LIGHTING FIXTURES SHALL BE HIGH EFFICACY 2017 FBC EC SEC. R404.1

ELECTRICAL LEGEND

	CEILING FAN (PRE-WIRE FOR LIGHT KIT)
	DOUBLE SECURITY LIGHT
	2x4 FLUORESCENT LIGHT FIXTURE
	RECESSED CAN LIGHT
	BATH EXHAUST FAN WITH LIGHT
	BATH EXHAUST FAN
	LIGHT FIXTURE
	DUPLEX OUTLET
	220v OUTLET
	GFI DUPLEX OUTLET
	SMOKE DETECTOR
	WALL SWITCH
	3 WAY WALL SWITCH
	4 WAY WALL SWITCH
	WATER PROOF GFI OUTLET
	PHONE JACK
	TELEVISION JACK
	GARAGE DOOR OPENER
	CARBON MONOXIDE ALARM

Erkinger Construction
Group

Grace Richards
Residence

ADDRESS:
17 SW Wigwam Court
Fort White, FL 32038
Colombia County, Florida

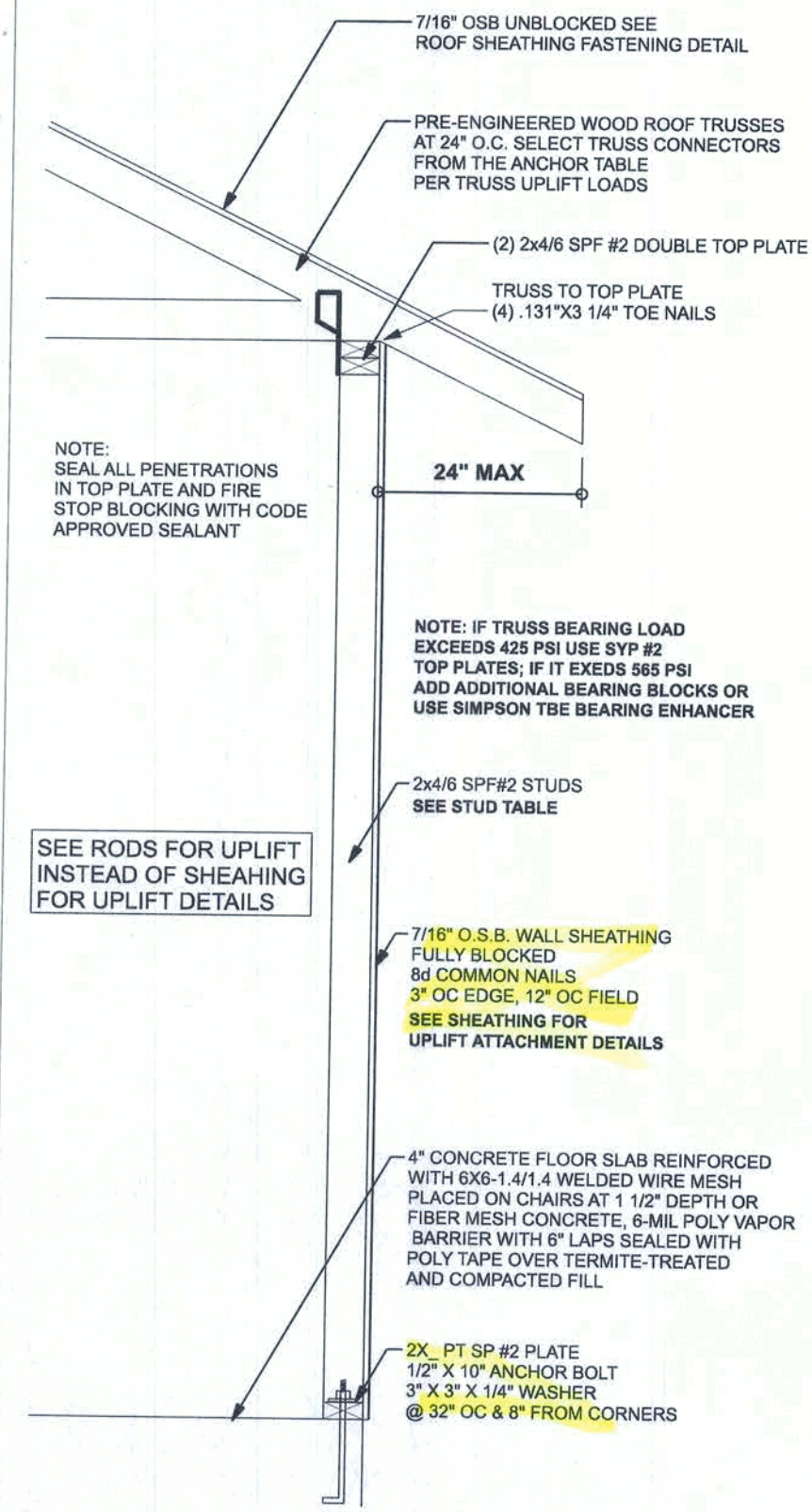
PRINTED DATE:
2020-07-21

DRAWN BY:
Matthew A. Erkinger Sr.

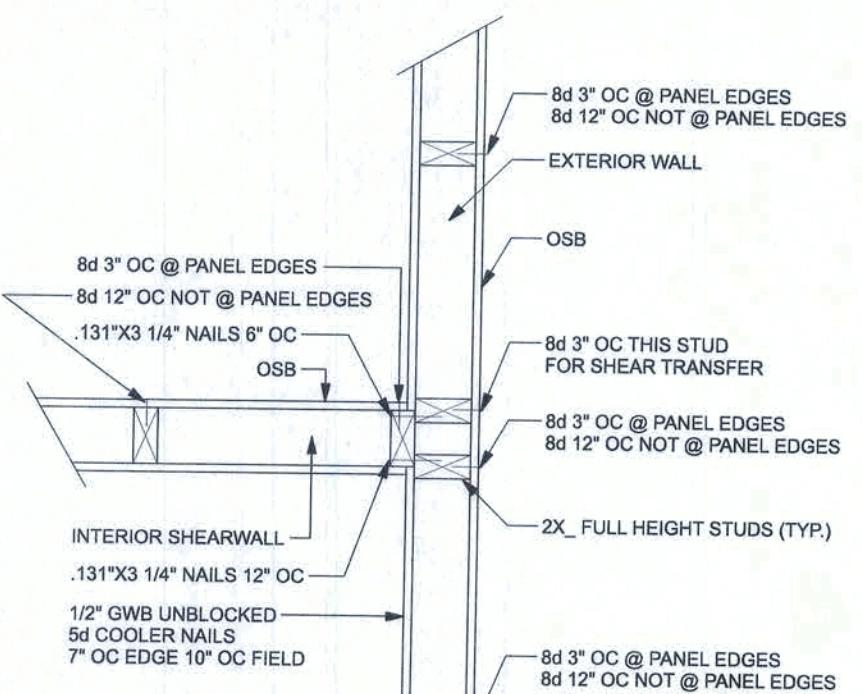
DRAWING NUMBER

#2

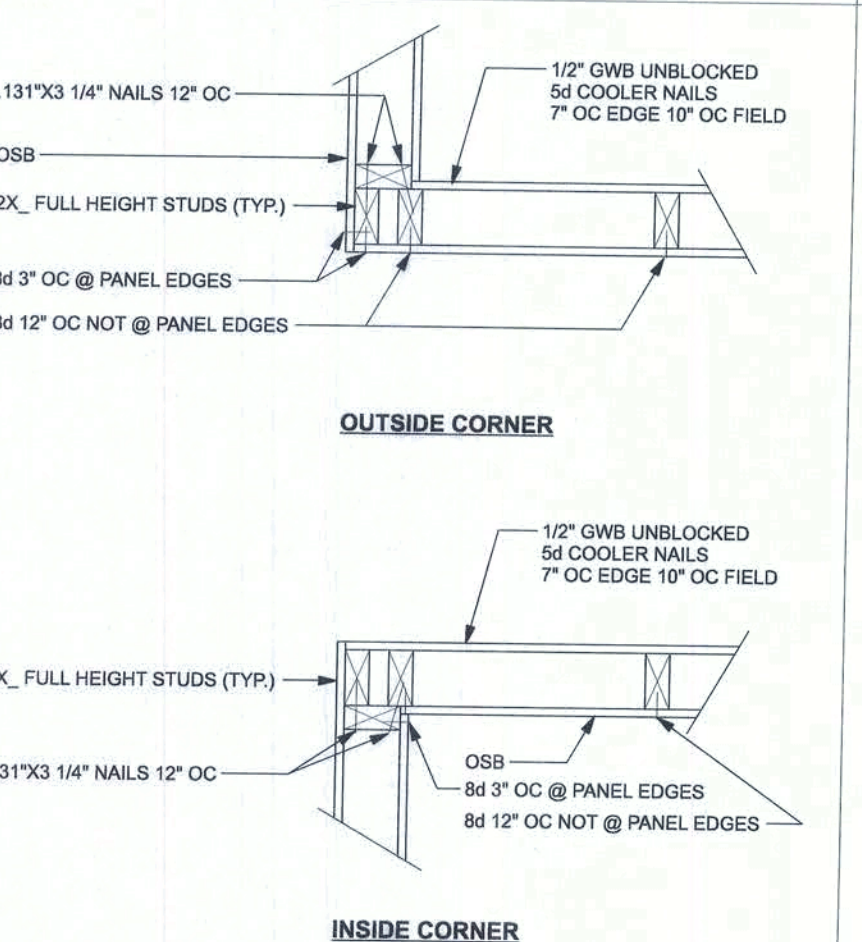
OF 2 SHEETS



ONE STORY WALL SECTION
SCALE: 3/4" = 1'-0"



(TYP.) INTERSECTING WALL FRAMING
WOOD FRAME

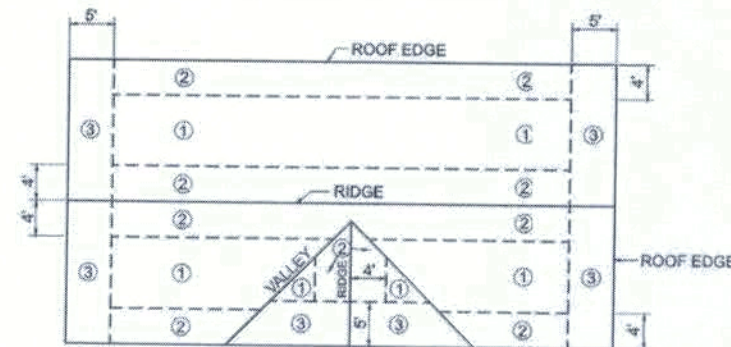


(TYP.) CORNER FRAMING
WOOD FRAME

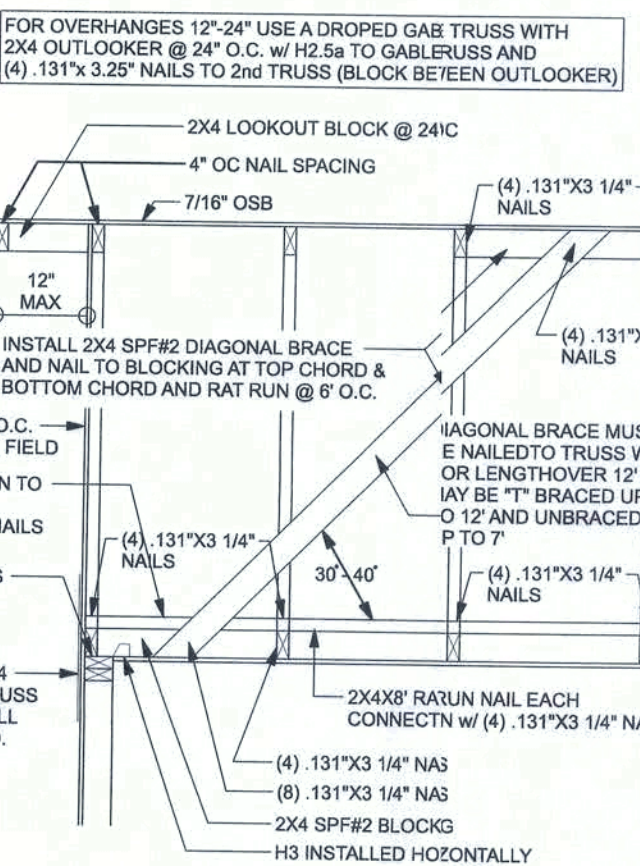
- RING-SHANK NAILS SHALL HAVE THE FOLLOWING MINIMUM DIMENSIONS:
- 0.113 INCH NOMINAL ROOT SHANK DIAMETER
 - RING DIAMETER OF 0.010 OVER SHANK DIAMETER
 - 16 TO 20 RINGS PER INCH
 - 0.280 INCH FULL ROUND HEAD DIAMETER
 - 2-3/8 INCH NAIL LENGTH

NAILING PATTERN SHALL BE:

- 4" OC GABLE END (SEE GABLE BRACING DETAIL)
- 6" OC @ EDGES ALL ZONES
- 6" OC @ INTERMEDIATE FRAMING IN ZONE 3
- 12" OC @ INTERMEDIATE FRAMING IN ZONE 1 & 2

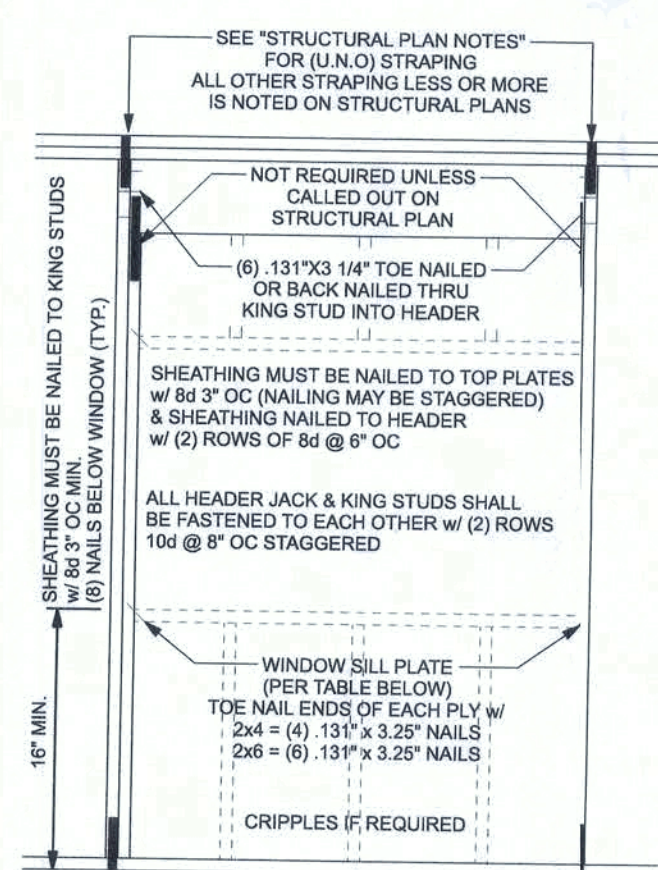


ROOF SHEATHING FASTENING

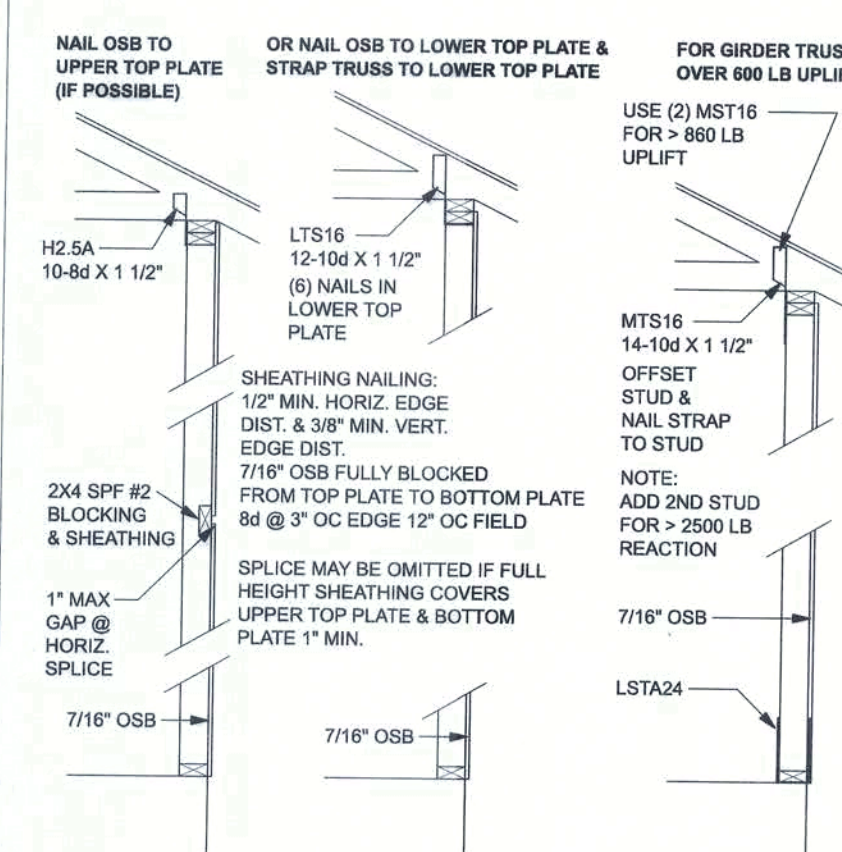


SPACE RAT RUN & DIAGONAL BRACE 8'-0" O.C.
FOR GABLE HEIGHT UP TO 25'-0" 130 MPH, EXP. (ENCLOSED)

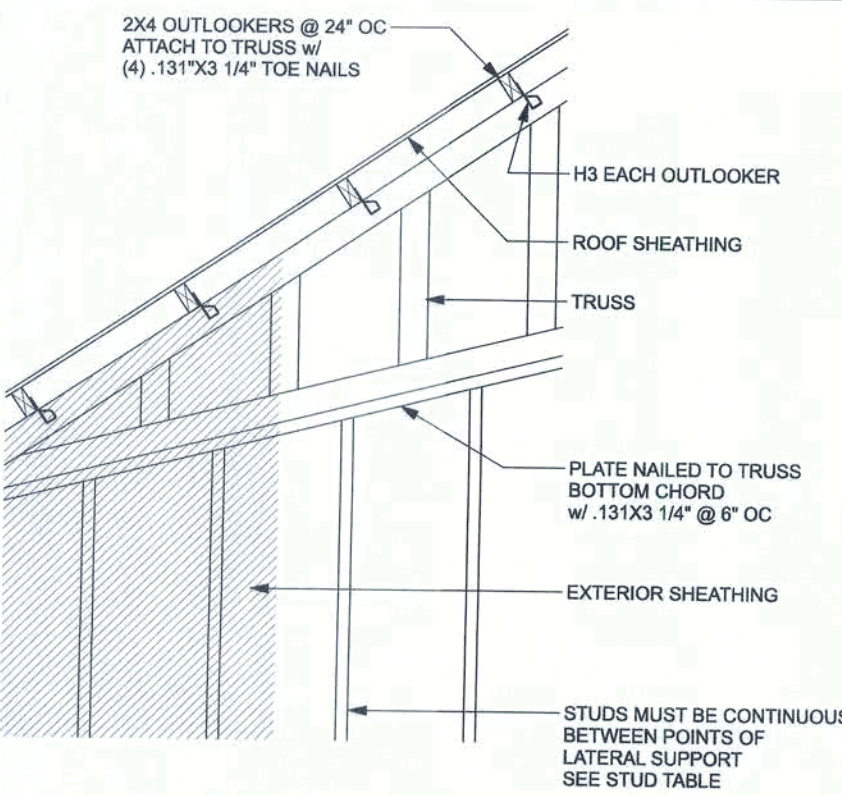
(TYP.) GABLE BRACING DETAIL
WOOD FRAME



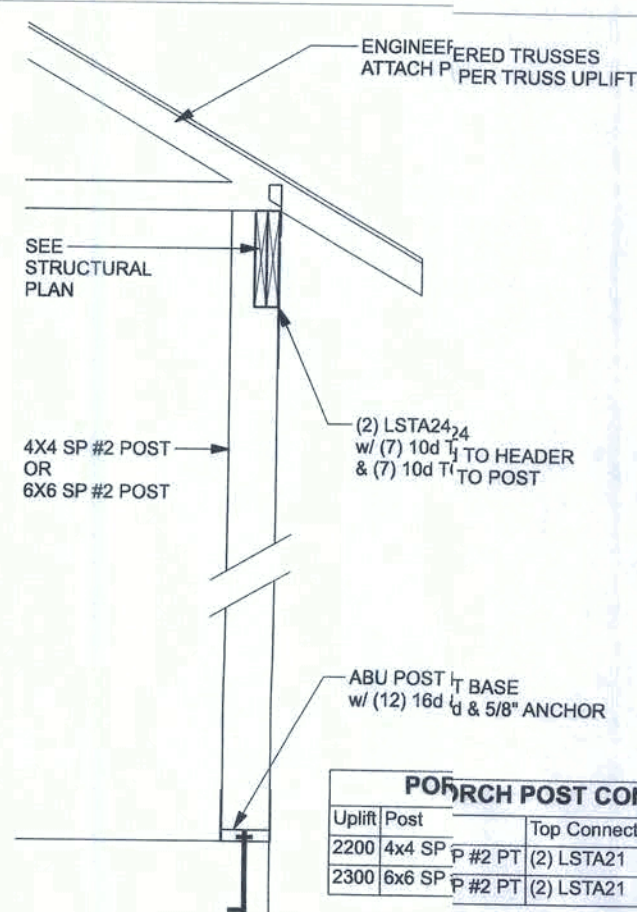
TYPICAL HEADER STRAPPING DETAIL
ONE STORY WOOD FRAME w/ STRAPS & ANCHORS



SHEATHING FOR UPLIFT ATTACHMENT DETAILS
ONE STORY WOOD FRAME



(TYP.) GABLE WALL w/ VAULTED CEILING
WOOD FRAME



(TYP.) PORCH POST
ONE STORY WOOD

OPTION: 1 (BUCKET)

OPTION: 2 (POCKETED)

NOTE: IF TRUSS TO BEAM STRAPS ARE NAILED TO BEAM LST24 ARE NOT REQUIRED

BEAM TO BEAR ON (2) 2X SPF#2 JACKS

2X PT SP#2 PLATE 1/2\"/>

1/2\"/>

3\"/>

BEAM - POCKETED BENEATH TOP PLATE

(DROPPED BEAM)

LST24, 14-10d WRAP UNDER PLATE

2X PT SP#2 PLATE 1/2\"/>

1/2\"/>

3\"/>

BEAM TO BEAR ON (2) 2X SPF#2 JACKS

2X PT SP#2 PLATE 1/2\"/>

1/2\"/>

3\"/>

BEAM - POCKETED BENEATH TOP PLATE

(DROPPED BEAM)

LST24, 14-10d WRAP UNDER PLATE

2X PT SP#2 PLATE 1/2\"/>

1/2\"/>

3\"/>

BEAM TO BEAR ON (2) 2X SPF#2 JACKS

2X PT SP#2 PLATE 1/2\"/>

1/2\"/>

3\"/>

BEAM - POCKETED BENEATH TOP PLATE

(DROPPED BEAM)

LST24, 14-10d WRAP UNDER PLATE

2X PT SP#2 PLATE 1/2\"/>

1/2\"/>

3\"/>

BEAM TO BEAR ON (2) 2X SPF#2 JACKS

2X PT SP#2 PLATE 1/2\"/>

1/2\"/>

3\"/>

BEAM - POCKETED BENEATH TOP PLATE

(DROPPED BEAM)

LST24, 14-10d WRAP UNDER PLATE

2X PT SP#2 PLATE 1/2\"/>

1/2\"/>

3\"/>

BEAM TO BEAR ON (2) 2X SPF#2 JACKS

2X PT SP#2 PLATE 1/2\"/>

1/2\"/>

3\"/>

BEAM - POCKETED BENEATH TOP PLATE

(DROPPED BEAM)

LST24, 14-10d WRAP UNDER PLATE

2X PT SP#2 PLATE 1/2\"/>

1/2\"/>

3\"/>

BEAM TO BEAR ON (2) 2X SPF#2 JACKS

2X PT SP#2 PLATE 1/2\"/>

1/2\"/>

3\"/>

BEAM - POCKETED BENEATH TOP PLATE

(DROPPED BEAM)

LST24, 14-10d WRAP UNDER PLATE

2X PT SP#2 PLATE 1/2\"/>

1/2\"/>

3\"/>

BEAM TO BEAR ON (2) 2X SPF#2 JACKS

2X PT SP#2 PLATE 1/2\"/>

1/2\"/>

3\"/>

BEAM - POCKETED BENEATH TOP PLATE

(DROPPED BEAM)

LST24, 14-10d WRAP UNDER PLATE

2X PT SP#2 PLATE 1/2\"/>

1/2\"/>

3\"/>

BEAM TO BEAR ON (2) 2X SPF#2 JACKS

2X PT SP#2 PLATE 1/2\"/>

1/2\"/>

3\"/>

BEAM - POCKETED BENEATH TOP PLATE

(DROPPED BEAM)

LST24, 14-10d WRAP UNDER PLATE

2X PT SP#2 PLATE 1/2\"/>

1/2\"/>

3\"/>

BEAM TO BEAR ON (2) 2X SPF#2 JACKS

2X PT SP#2 PLATE 1/2\"/>

1/2\"/>

3\"/>

BEAM - POCKETED BENEATH TOP PLATE

(DROPPED BEAM)

LST24, 14-10d WRAP UNDER PLATE

2X PT SP#2 PLATE 1/2\"/>

1/2\"/>

3\"/>

BEAM TO BEAR ON (2) 2X SPF#2 JACKS

2X PT SP#2 PLATE 1/2\"/>

1/2\"/>

3\"/>

BEAM - POCKETED BENEATH TOP PLATE

(DROPPED BEAM)

LST24, 14-10d WRAP UNDER PLATE

2X PT SP#2 PLATE 1/2\"/>

1/2\"/>

3\"/>

BEAM TO BEAR ON (2) 2X SPF#2 JACKS

2X PT SP#2 PLATE 1/2\"/>

1/2\"/>

3\"/>

BEAM - POCKETED BENEATH TOP PLATE

(DROPPED BEAM)

LST24, 14-10d WRAP UNDER PLATE

2X PT SP#2 PLATE 1/2\"/>

1/2\"/>

3\"/>

BEAM TO BEAR ON (2) 2X SPF#2 JACKS

2X PT SP#2 PLATE 1/2\"/>

1/2\"/>

3\"/>

BEAM - POCKETED BENEATH TOP PLATE

(DROPPED BEAM)

LST24, 14-10d WRAP UNDER PLATE

2X PT SP#2 PLATE 1/2\"/>

1/2\"/>

3\"/>

BEAM TO BEAR ON (2) 2X SPF#2 JACKS

2X PT SP#2 PLATE 1/2\"/>

1/2\"/>

3\"/>

BEAM - POCKETED BENEATH TOP PLATE

(DROPPED BEAM)

LST24, 14-10d WRAP UNDER PLATE

2X PT SP#2 PLATE 1/2\"/>

1/2\"/>

3\"/>

BEAM TO BEAR ON (2) 2X SPF#2 JACKS

2X PT SP#2 PLATE 1/2\"/>

1/2\"/>

3\"/>

BEAM - POCKETED BENEATH TOP PLATE

(DROPPED BEAM)

LST24, 14-10d WRAP UNDER PLATE

2X PT SP#2 PLATE 1/2\"/>

1/2\"/>

3\"/>

BEAM TO BEAR ON (2) 2X SPF#2 JACKS

2X PT SP#2 PLATE 1/2\"/>

1/2\"/>

3\"/>

BEAM - POCKETED BENEATH TOP PLATE

(DROPPED BEAM)

LST24, 14-10d WRAP UNDER PLATE

2X PT SP#2 PLATE 1/2\"/>

1/2\"/>

3\"/>

BEAM TO BEAR ON (2) 2X SPF#2 JACKS

2X PT SP#2 PLATE 1/2\"/>

1/2\"/>

3\"/>

BEAM - POCKETED BENEATH TOP PLATE

(DROPPED BEAM)

LST24, 14-10d WRAP UNDER PLATE

2X PT SP#2 PLATE 1/2\"/>

1/2\"/>

3\"/>

BEAM TO BEAR ON (2) 2X SPF#2 JACKS

2X PT SP#2 PLATE 1/2\"/>

1/2\"/>

3\"/>

BEAM - POCKETED BENEATH TOP PLATE

(DROPPED BEAM)

LST24, 14-10d WRAP UNDER PLATE

2X PT SP#2 PLATE 1/2\"/>

1/2\"/>

3\"/>

BEAM TO BEAR ON (2) 2X SPF#2 JACKS

2X PT SP#2 PLATE 1/2\"/>

1/2\"/>

3\"/>

BEAM - POCKETED BENEATH TOP PLATE

(DROPPED BEAM)

LST24, 14-10d WRAP UNDER PLATE

2X PT SP#2 PLATE 1/2\"/>

1/2\"/>

3\"/>

BEAM TO BEAR ON (2) 2X SPF#2 JACKS

2X PT SP#2 PLATE 1/2\"/>

1/2\"/>

3\"/>

BEAM - POCKETED BENEATH TOP PLATE

(DROPPED BEAM)

LST24, 14-10d WRAP UNDER PLATE

2X PT SP#2 PLATE 1/2\"/>

1/2\"/>

3\"/>

BEAM TO BEAR ON (2) 2X SPF#2 JACKS

2X PT SP#2 PLATE 1/2\"/>

1/2\"/>

3\"/>

BEAM - POCKETED BENEATH TOP PLATE

(DROPPED BEAM)

LST24, 14-10d WRAP UNDER PLATE

2X PT SP#2 PLATE 1/2\"/>

1/2\"/>

3\"/>

BEAM TO BEAR ON (2) 2X SPF#2 JACKS

2X PT SP#2 PLATE 1/2\"/>

1/2\"/>

3\"/>

BEAM - POCKETED BENEATH TOP PLATE

(DROPPED BEAM)

LST24, 14-10d WRAP UNDER PLATE

2X PT SP#2 PLATE 1/2\"/>

1/2\"/>

3\"/>

BEAM TO BEAR ON (2) 2X SPF#2 JACKS

2X PT SP#2 PLATE 1/2\"/>

1/2\"/>

3\"/>

BEAM - POCKETED BENEATH TOP PLATE

(DROPPED BEAM)

LST24, 14-10d WRAP UNDER PLATE

2X PT SP#2 PLATE 1/2\"/>

1/2\"/>

3\"/>

BEAM TO BEAR ON (2) 2X SPF#2 JACKS

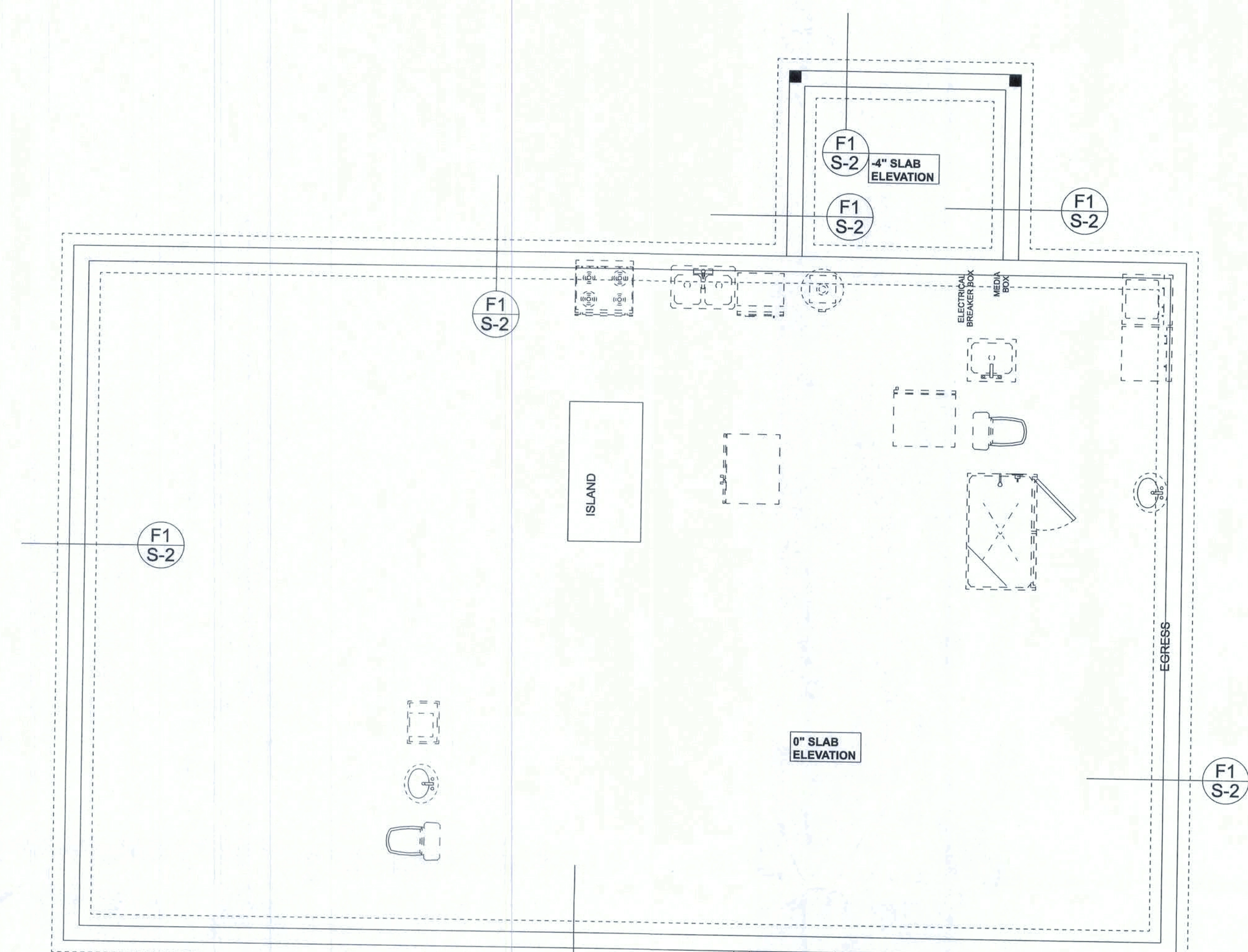
2X PT SP#2 PLATE 1/2\"/>

1/2\"/>

3\"/>

BEAM - POCKETED BENEATH TOP PLATE

(DROPPED BEAM)



SCALE: 1/4" = 1'-0"

FN - 1	<p>DIMENSIONS ON FOUNDATION & STRUCTURAL SHEETS ARE NOT EXACT. REFER TO ARCHITECTURAL PLANS FOR ACTUAL DIMENSIONS, RECESSES IN SLAB, STEP DOWNS, ETC. DISMISSAWY DESIGN GROUP OR MAKE DISMISSAWY, P.E. IS RESPONSIBLE FOR DIMENSION ERRORS ON THIS PLAN.</p> <p>CONTRACTOR SHALL VERIFY NEED FOR INTERIOR BEARING IN ALL AREAS BY REVIEWING THE ROOF TRUSS PLAN (BY THE SUPPLIER) BEFORE FINALIZING FOUNDATION PLAN.</p> <p>THE SLAB SHALL BE: 4" CONCRETE SLAB REINFORCED w/ 6X8-1/4" A WELDED WIRE MESH PLACED ON CHAIRS 6" MIN. DEPTH OR FILLER, 6-MIL. POLY VAPOR BARRIER w/ 6" LAPS SEALED. POLY TAPE OVER TEMITE-TREATED & COMPACTED FILL.</p>
--------	--

SN-1 ALL LOAD BEARING FRAME WALL & PORCH HEADERS SHALL BE A MINIMUM OF (2) 2X6 SP #2 (U.N.O.)

SN-2 ALL LOAD BEARING FRAME WALL HEADERS SHALL HAVE (1) JACK STUD & (1) KING STUD EACH SIDE (U.N.O.)

SN-3 ALL HEADERS w/ UPLIFT TO BE STRAPPED DOWN @ EACH SIDE WITH (1) LSTA24, 14-10d @ TOP & BOTTOM OF WALL WRAP UNDER BOTTOM PLATE & OVER TOP PLATE 1/2" x 10" ANCHOR BOLT w/ 3" x 3" x 1/4" WASHER MUST BE LOCATED WITHIN 8" OF KILLED STUD @ ALL DOOR LOCATIONS (U.N.O.) (OR SEE ROD HOLD DOWN OPTIONS)

SN-4 USE ONE JACK STUD GIRDER SUPPORT PER 2500 LB LOAD

SN-5 DIMENSIONS ON STRUCTURAL SHEETS ARE NOT EXACT. REFER TO ARCHITECTURAL FLOOR PLAN FOR ACTUAL DIMENSIONS

SN-6 PERMANENT TRUSS BRACING IS TO BE INSTALLED AT LOCATIONS AS SHOWN ON THE SEALED TRUSS DRAWINGS. LATERAL BRACING IS TO BE RESTRAINED PER BCS1-03, BCS1-B1, BCS1-B2, & BCS1-B3. BCS1-B1, BCS1-B2, & BCS1-B3 ARE FURNISHED BY THE TRUSS SUPPLIER, WITH THE SEALED TRUSS PACKAGE

Diagram illustrating the components of a beam call-out: **(2) 2X10X0', 1J 1K**

- (2)**: NUMBER OF KING STUDS (FULL LENGTH)
- 2**: NUMBER OF JACK STUDS (UNDER HEAD)
- X10**: SPAN OF HEADER
- X0'**: SIZE OF HEADER MATERIAL
- 1J**: NUMBER OF PLIES IN HEADER
- 1K**: HEADER/BEAM CALL-OUT (U.N.O.)

	TRANSVERSE	LONGITUDINAL
ACTUAL	21186 LBF	24750 LBF
REQUIRED	9862 LBF	7866 LBF

MASONRY NOTE:
MASONRY CONSTRUCTION AND MATERIALS FOR THIS PROJECT SHALL CONFORM TO ALL REQUIREMENTS OF "SPECIFICATION FOR MASONRY STRUCTURES" (ACI 530.1/ASCE 6/TMS 602). THE CONTRACTOR AND MASON MUST IMMEDIATELY, BEFORE PROCEEDING, NOTIFY THE ENGINEER OF ANY CONFLICTS BETWEEN ACI 530.1-02 AND THESE DESIGN DRAWINGS. ANY EXCEPTIONS TO ACI 530.1-02 MUST BE APPROVED BY THE ENGINEER IN WRITING.

TALL STEAM WALL TABLE:

The table assumes 40 ksi for #5 rebar and 60 ksi for #7 & #8 rebar with 6" hook in the footing and bent 24" into the reinforced slab at the top. The vertical steel is to be placed toward the tension side of the CMU wall (away from the soil pressure, within 2" of the exterior side of the wall). If the wall is over 8' high, add Durowall ladder reinforcement at 16"OC vertically or a horizontal bond beam with continuous mid height. For higher parts of the wall 12" CMU may be used with reinforcement as shown in the table below.

STEM WALL HEIGHT (FEET)	UNBALANCED BACKFILL HEIGHT	VERTICAL REINFORCEMENT FOR 8" CMU STEMMALL (INCHES O.C.)		VERTICAL REINFORCEMENT FOR 12" CMU STEMMALL (INCHES O.C.)	
		#5	#8	#5	#8
3.3	3.0	96	96	96	96
4.0	3.7	96	96	96	96
4.7	4.3	88	96	96	96
5.3	5.0	56	96	96	96
6.0	5.7	40	96	80	96
6.7	6.3	32	56	80	96
7.3	7.0	24	40	56	80
8.0	7.7	16	32	48	64
8.7	8.3	8	24	32	48
9.3	9.0	8	16	24	48

Technical drawing of a Stem Wall Footing showing cross-section and reinforcement details. The drawing includes a concrete slab on top of a footing. Reinforcement details include:

- (1) #5 CONTINUOUS IN HEADER-BLOCK BOND BEAM @ SLAB EDGE INTERSECTION w/ STEM WALL.
- #5 REBAR w/ 24" HOOK BENT INTO SLAB & STD HOOK IN FOOTING @ EACH CORNER & 96" OC
- 8X8X16, RUNNING BOND, CMU STEM WALL, MIN. 2, MAX 5 COURSES (SEE SPECIAL REINFORCEMENT TABLE FOR MORE THAN 5 COURSES)
- 3" MIN. COVER (TYP.)
- 20" W X 10" D POURED CONCRETE STRIP FOOTING w/ (2) #5 REBAR CONTINUOUS
- 12" W X 16" D FOR PORCH MONO FOOTING w/ (2) #5 CONTINUOUS

F1
S-2 **STEM WALL FOOTING**
SCALE: 1/2" = 1'-0"

F1 **OPTIONAL MONOLITHIC FOOTING**
S-2 SCALE: 1/2" = 1'-0"

ERKINGER
CONSTRUCTION GROUP

Grace Richards
Residence

PROJECT ADDRESS:
173 SW Wigwam Court
Fort White, FL 32038
Columbia County, Florida

DIMENSIONS:
Stated dimensions supercede scaled dimensions. Refer all questions to Mark Disosway, P.E. for resolution. Do not proceed without clarification.

COPYRIGHTS AND PROPERTY RIGHTS:
Mark Disoway, P.E. hereby expressly reserves its common law copyrights and property right in these instruments of service. This document is not to be reproduced, altered or copied in any form or manner without first the express written permission and consent of Mark Disoway.

CERTIFICATION: I hereby certify that I have examined this plan, and that the applicable portions of its plan, relating to wind engineering comply with the 6th Edition Florida Building Code Residential (2017) to the best of my knowledge.

LIMITATION: This design is valid for one building, at specified location.

Tuesday, July 21, 2020

Mark Disosway P.E.
163 SW Midtown Place
Suite 103
Lake City, Florida 32025
:86.754.5419
disoswardesign@gmail.com

JO3 NUMBER:
200791

S-2
OF 2 SHEETS