

UNLESS NOTED OTHERWISE

1'-0"

8" BRG.

12x8

12x12

0

12

ALL HANGERS SIMPSON HUS26 UNLESS NOTED

(A)	HUS26
(B)	HGUS26-2
(C)	

YOUR SIGNATURE WILL ACKNOWLEDGE:

- SIGNED** _____

DATE _____

DO NOT CUT OR ALTER TRUSSES WITHOUT

ALL WALLS SHOWN ARE BEARING.
(UNLESS NOTED OTHERWISE)

DIRECTION BRACING IS NOT THE RESPONSIBILITY OF TRUSS DESIGNER, PLATE MANUFACTURER, OR TRUSS MANUFACTURER

SECTION FIVE IS NOT THE RESPONSIBILITY OF TRUSS DESIGNER. RATE INCREASES, AND TRUSS FABRICATOR, PERSONS EXERCISING TRUSS, ARE CONTINUED TO SEX, PROFESSIONAL, ADVICE, RELATIONSHIP SECTION FIVE WHICH IS ALWAYS REQUIRED TO PREVENT TRYING AND DOWNWARD DIRECTION, AND PERMANENT RECORD WHICH MAY BE EXAMINED IN SPECIFIC PARTICIPANTS. SEE 78-61 SUMMARY STATE COMMENTARY FOR MORE INFORMATION. TRUSS DESIGNER IS NOT RESPONSIBLE FOR THE DESIGN OF THE TRUSS. TRUSS DESIGNER IS TO BE EXERCISED AND FABRICATED IN A STAINLESS AND PLATING PATTERN WHERE NO SIGNIFICANT IS APPLIED DIRECTLY TO THE TYP CHANGES. THEY SHALL BE GRANTED AS SPECIFIED ON THE TRUSS DESIGN.

TRUSS SHALL BE HANDLED WITH REASONABLE CARE DURING SECTION TO PREVENT DAMAGE.

FOR ANY TRUSS TO TRUSS CONNECTION WITH A REACTION GREATER THAN 5000 POUNDS OR SKEWED, NO HANGER IS SUPPLIED. CONTRACTOR SHOULD CHECK ALL REACTIONS FOR PROPER CONNECTIONS.

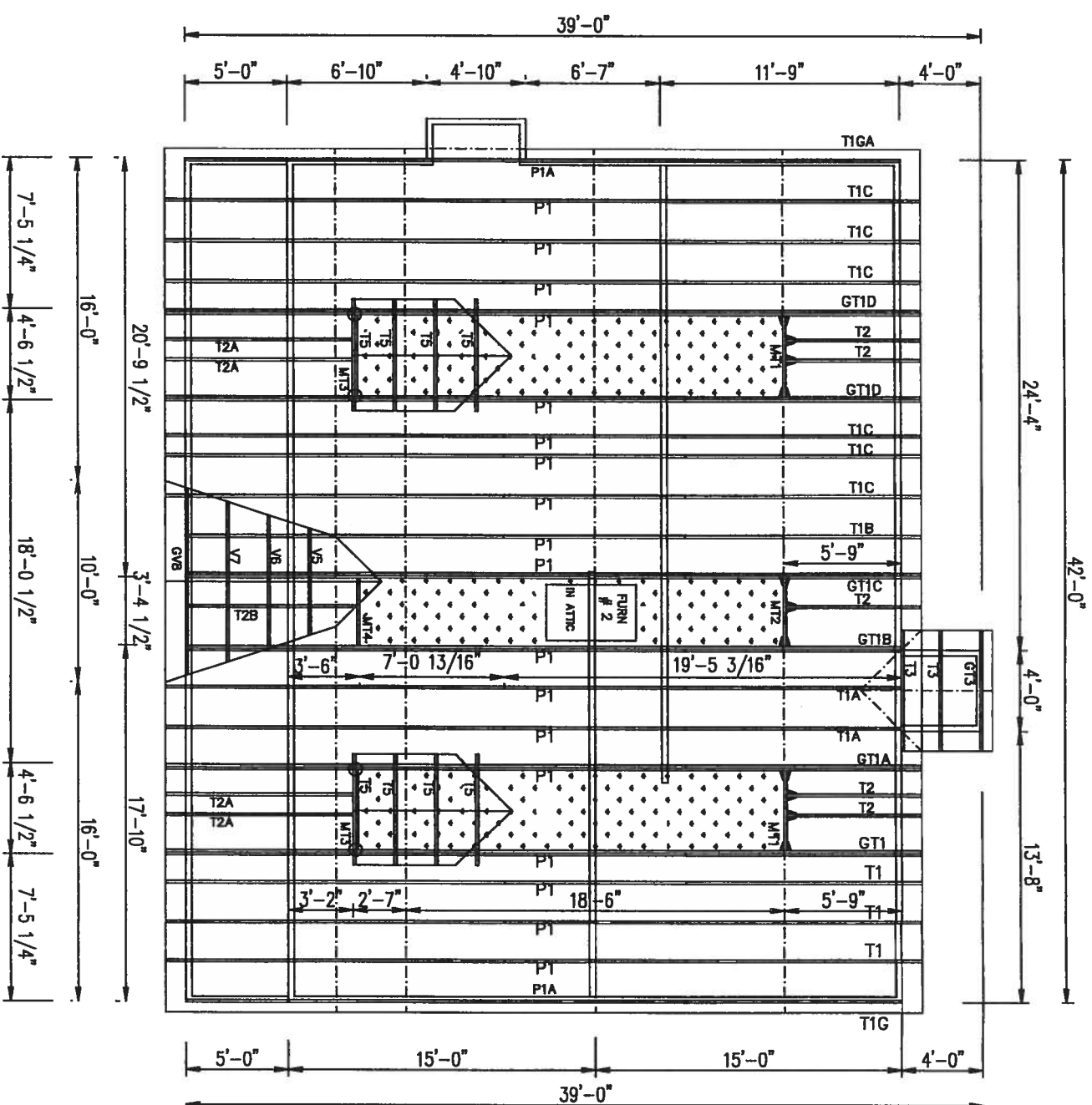
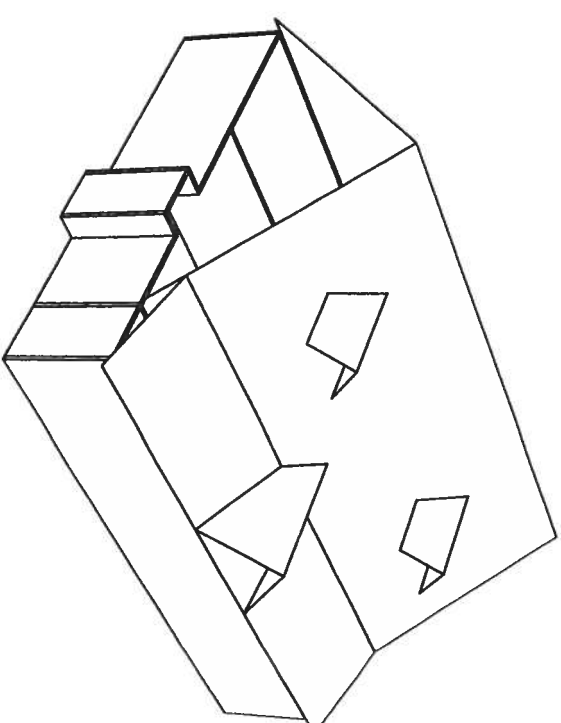
[illegible]

85 Bennett Street Auburndale, FL 33823 (883) 865-7173

LOT/BULK/SUBD:

CHARLESTON

CHARLESTON



8'-1 1/8" WALL HEIGHT

FRAMED BY BUILDING

HUS26 TRUSS HANGERS

O HGU26-2 TRUSS HANGERS