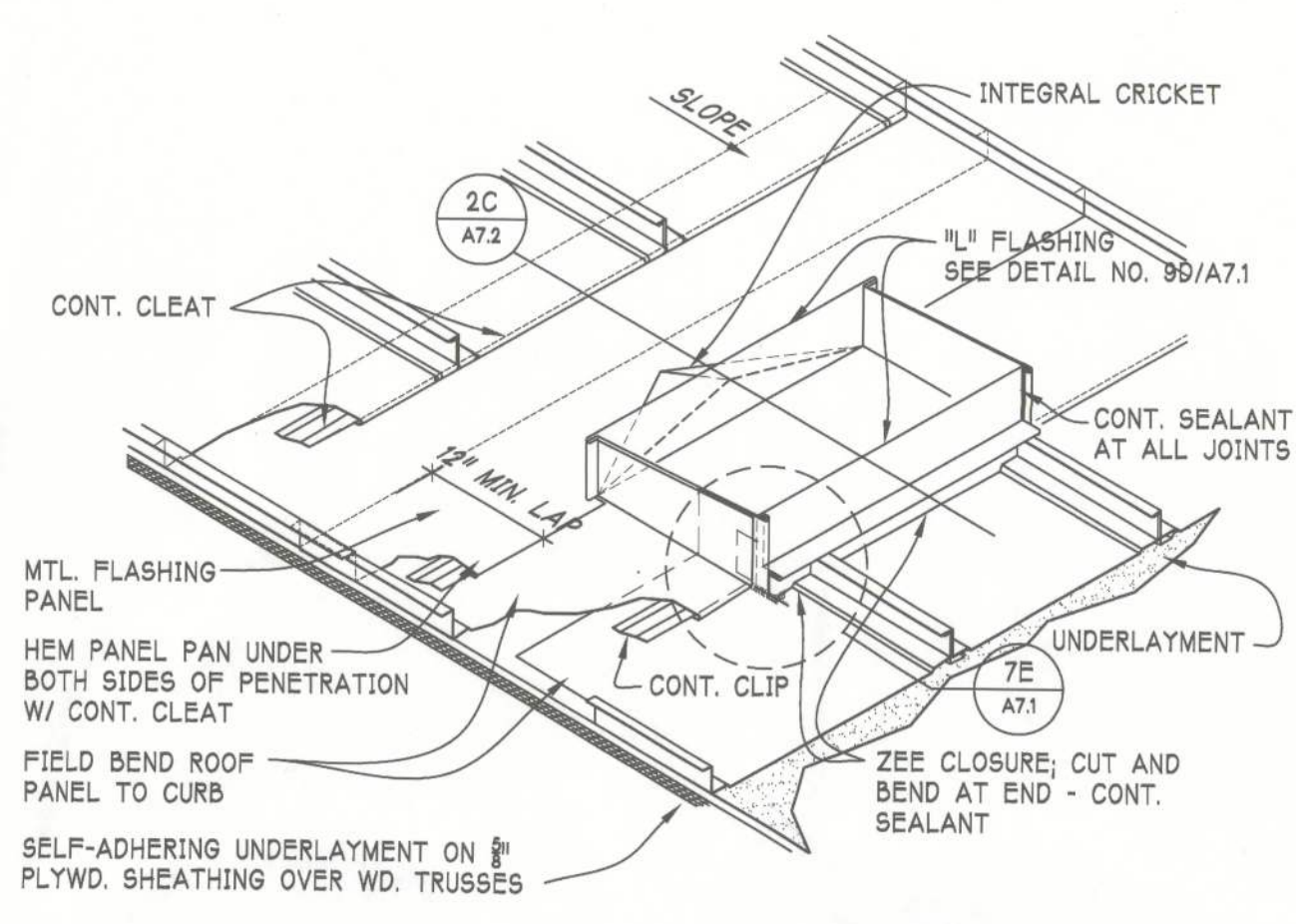
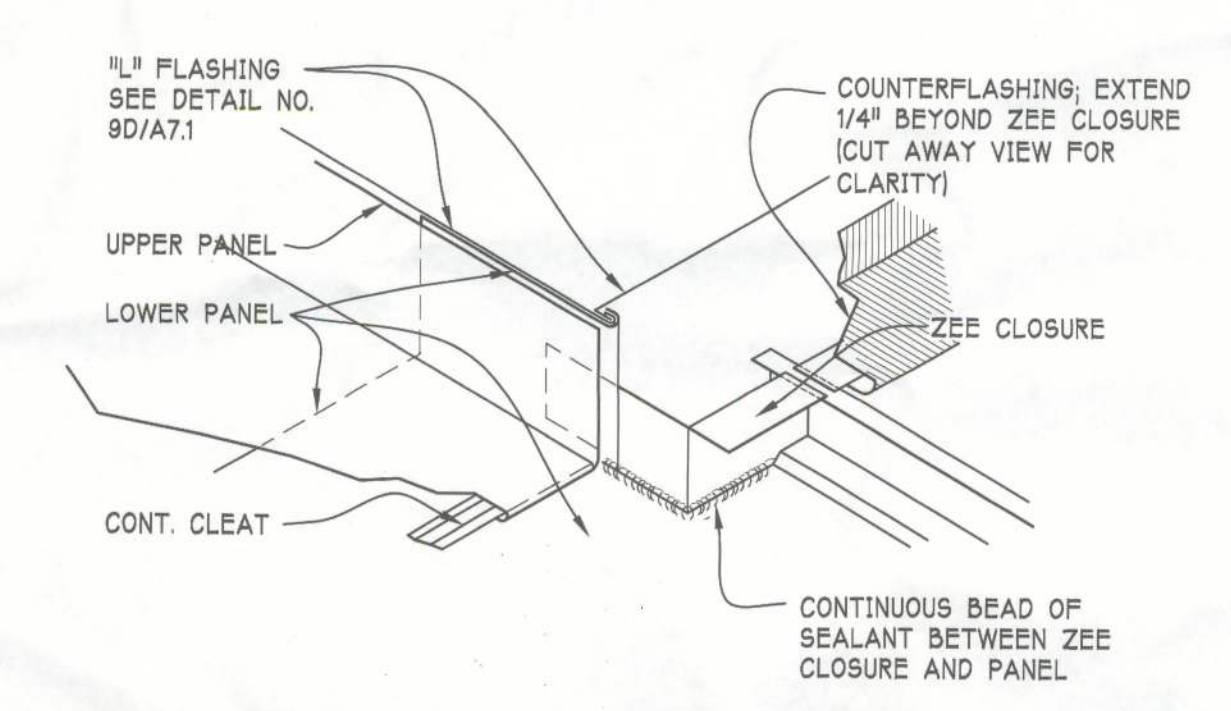


**ROOF PLAN**  
 SCALE: 1/8" = 1'-0"  
 3G A7.1

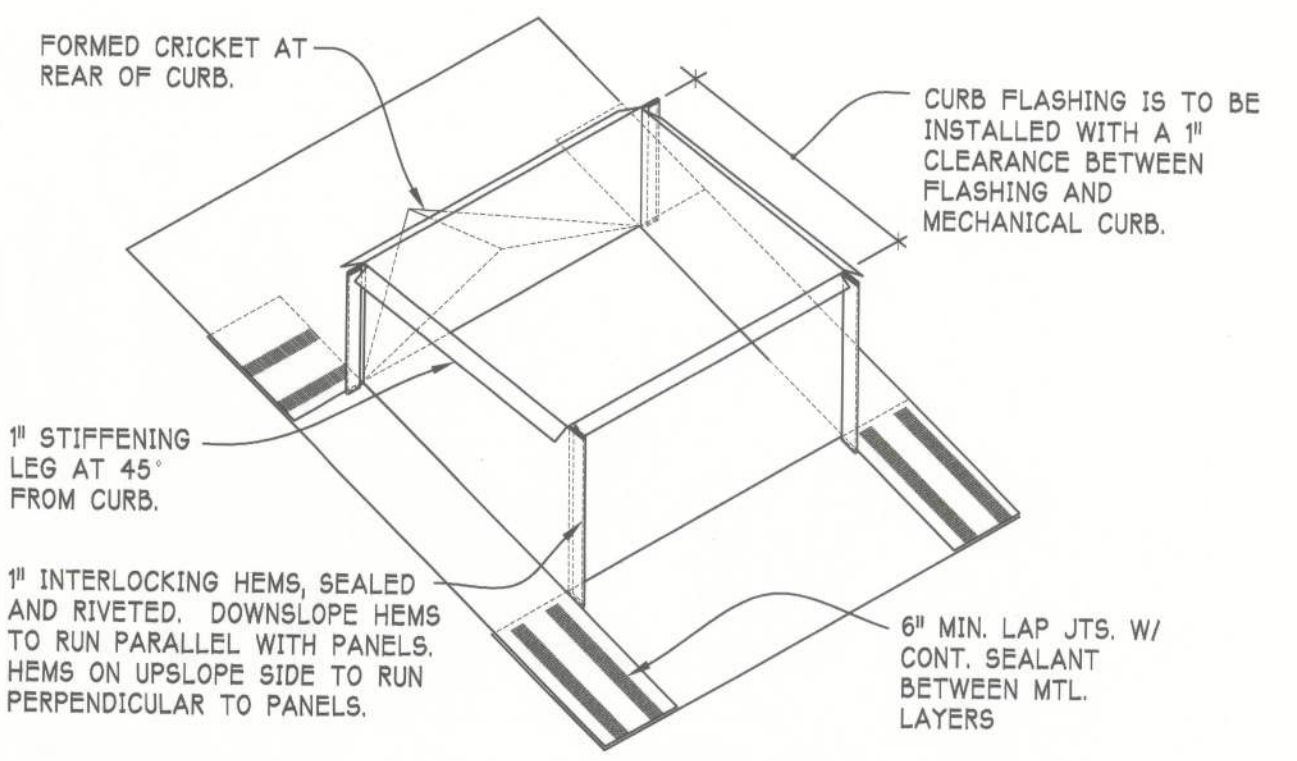
ROOF PLAN LEGEND:		GENERAL ROOFING NOTES:	
	EXHAUST FAN OR OTHER VENTILATING DEVICE W/ CURB, CRICKET & FLASHING OR DECK MOUNTED AS REQD. BY MECH.	A.	FIELD VERIFY ALL DIMENSIONS PRIOR TO FABRICATION AND INSTALLATION. DIMENSIONS SHOWN ARE PARALLEL TO THE GROUND.
	PLUMBING VENT THRU ROOF	B.	ALL DETAILS ARE TYPICAL UNLESS OTHERWISE NOTED.
	DOWNSPOUT	C.	LOCATE DOWN SPOUTS AS SHOWN ON PLANS & ELEVATIONS.
	SEE ROOFING NOTES	D.	PROVIDE CRICKETS ON THE HIGH SIDE OF ALL CURBS.
		E.	PROTECT EXPOSED MATERIALS AND STRUCTURE DURING CONSTRUCTION.
		F.	COORDINATE EXACT SIZE, QUANTITIES AND LOCATIONS OF MECHANICAL OPENINGS WITH MECH. DWGS AND EQUIPMENT SUPPLIER PRIOR TO FABRICATION. VERIFY QUANTITY, SIZE AND LOCATIONS OF VTR'S WITH PLUMBING DRAWINGS.
		G.	DRAFT STOPPING NOT TO EXCEED AN ENCLOSED AREA OF 3,000 SQ. FT. VERIFY EXACT LOCATION IN THE FIELD WITH ROOF TRUSSES.



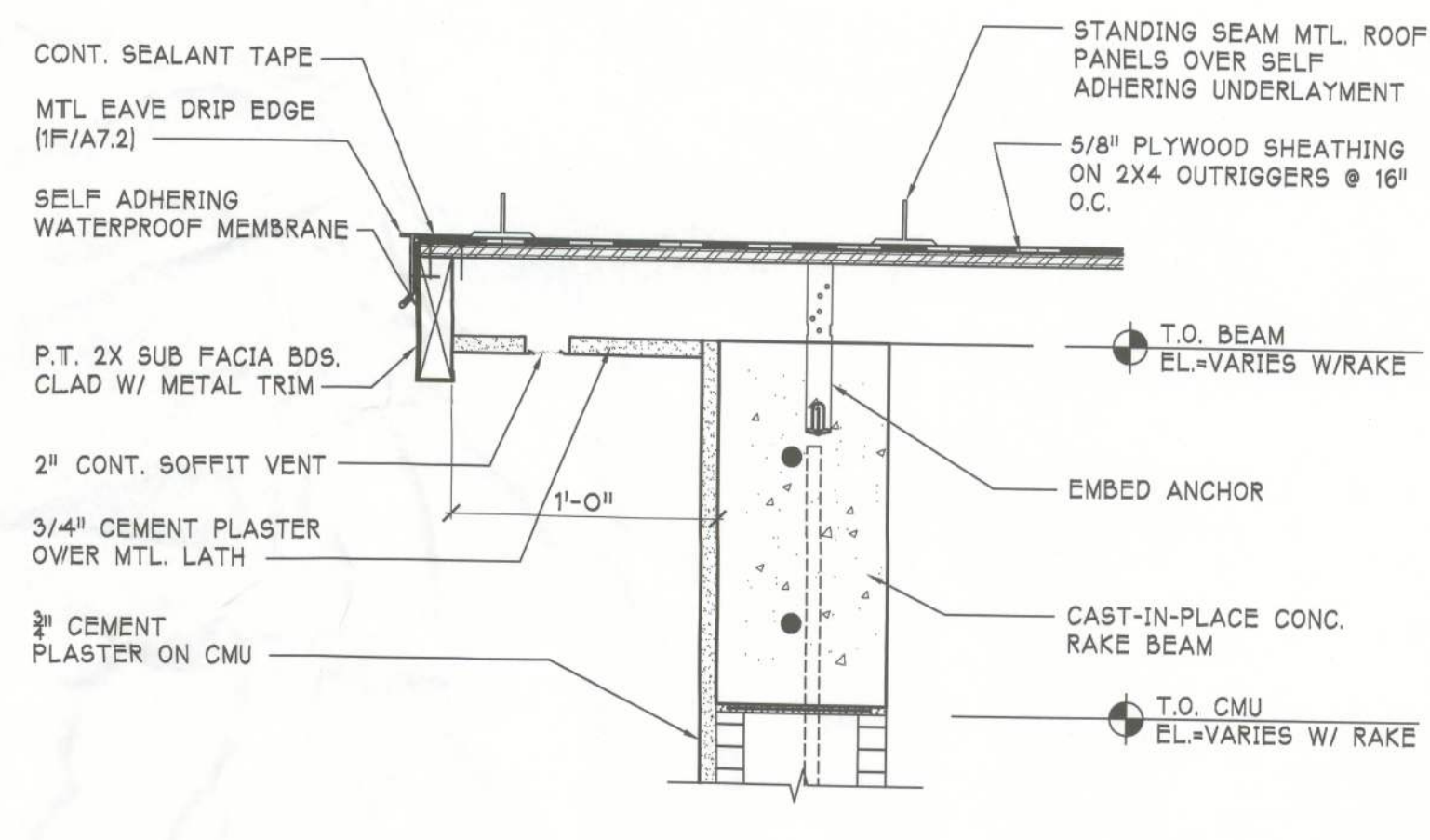
**ISOMETRIC VIEW OF CURB (TYP.)**  
 SCALE: N.T.S.  
 7D A7.1



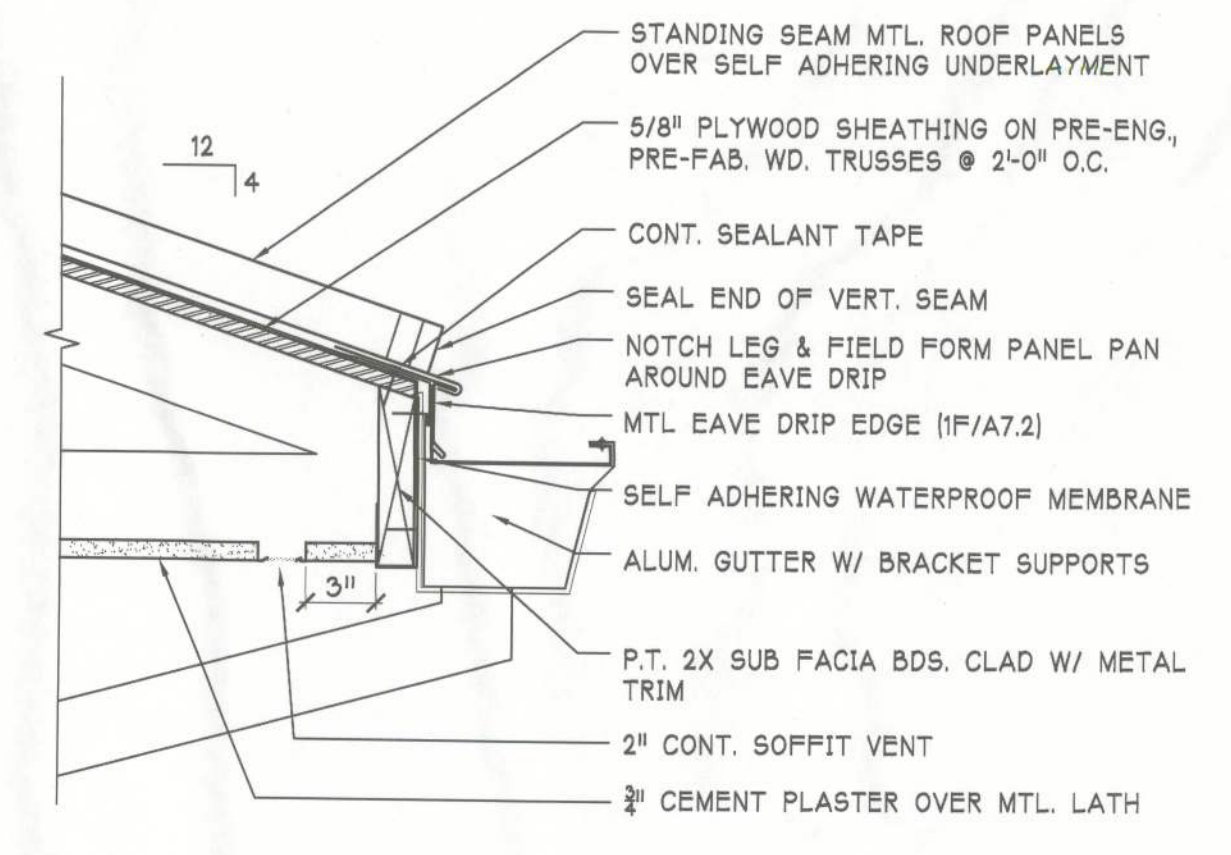
**ISOMETRIC VIEW OF CURB (TYP.)**  
 SCALE: N.T.S.  
 7E A7.1



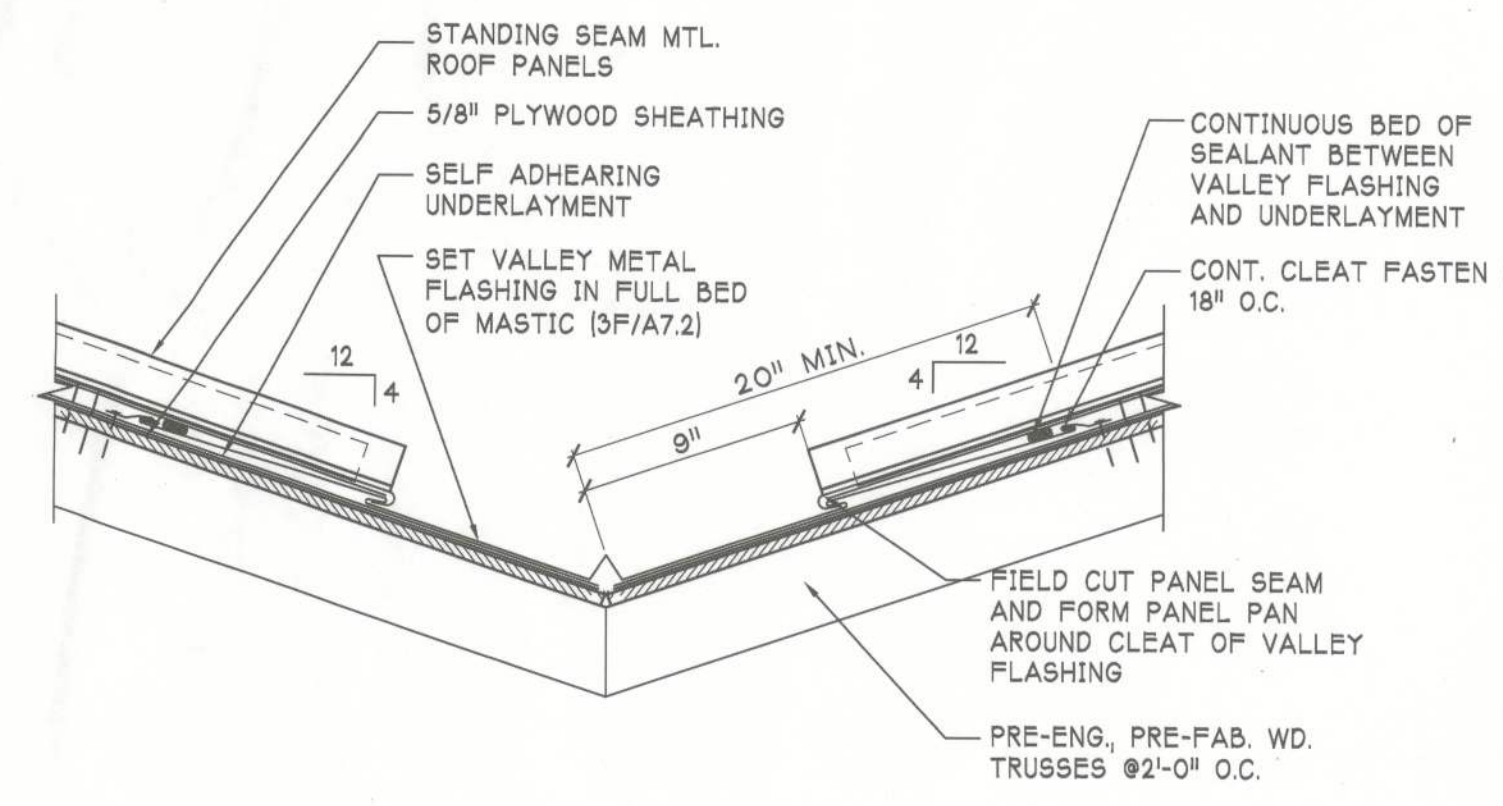
**ISOMETRIC VIEW "L" FLASHING AT CURB**  
 SCALE: N.T.S.  
 9D A7.1



**8F A7.1 RAKE DETAIL**  
 SCALE: 1 1/2" = 1'-0"



**6G A7.1 EAVE DETAIL**  
 SCALE: 1 1/2" = 1'-0"



**8G A7.1 VALLEY DETAIL**  
 SCALE: 1 1/2" = 1'-0"