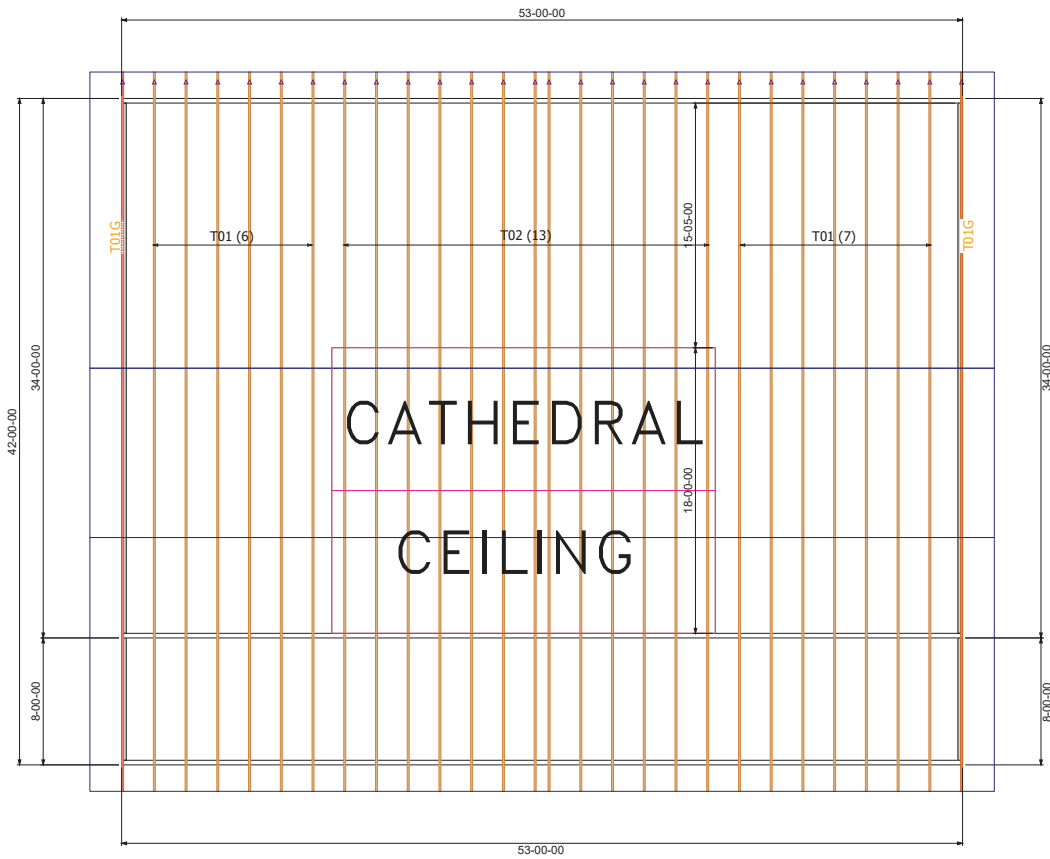


6/12 – 3/12 PITCH – 20” O/H



THE ARROW HEAD AT THE END OF THE TRUSS ON THE TRUSS PLACEMENT PLAN (LAYOUT) CORRESPONDS WITH THE LEFT SIDE OF THE INDIVIDUAL TRUSS DRAWING. USE THIS AS AN ORIENTATION GUIDE WHEN SETTING THE TRUSSES ON THE STRUCTURE.

**General Notes:**  
- For ANS/TFP 1-2002 all "Truss to Wall" connections are the responsibility of the Building Designer, not the Truss Manufacturer.  
- Use Manufacturer's specifications for all hanger connections unless noted otherwise.  
- Trusses are to be 24" o.c. U.N.O.  
- All hangers are to be Simpson or equivalent U.N.O.  
- Use 10d x 1 1/2" Nails in hanger connections to single ply girders.  
- Trusses are not designed to support brick U.N.O.  
- Dimensions are Feet-Inches-Sixteenths

**Notes:**  
No back charges will be accepted by Builders FirstSource unless approved in writing first.  
800-838-4541  
ACQ lumber is corrosive to truss plates. Any ACQ lumber that comes in contact with truss plates (i.e. scabbled on tails) must have an approved barrier applied first.

Refer to BCSI-BI Summary Short Guide for handling, installing and bracing of Metal Plate Connected Wood Truss prior to and during truss installation.

It is the responsibility of the Contractor to ensure the proper orientation of the truss placement plans as to the construction documents and field conditions of the structure orientation. If a reversed or flipped layout is required, it will be supplied at no extra cost by Builders FirstSource.

It is the responsibility of the Contractor to make sure the placement of trusses are adjusted for plumbing drops, cat lights, etc., so the trusses do not interfere with these type of items.

All common framed roof or floor systems must be designed as to NOT impose any loads on the floor trusses below. The floor trusses have not been designed to carry any additional loads from above.

This truss placement plan was not created by an engineer, but rather by the Builders FirstSource staff and is solely to be used as an installation guide and does not require a seal. Complete truss engineering and analysis can be found on the truss design drawings which may be sealed by the truss design engineer.

Gable and trusses require continuous bottom chord bearing. Refer to local codes for wall framing requirements.

Although all attempts have been made to do so, trusses may not be designed symmetrically. Please refer to the individual truss drawings and truss placement plans for proper orientation and placement.



**Lake City**  
PHONE: 386-755-6894  
FAX: 386-755-7973  
**Jacksonville**  
PHONE: 904-772-6100  
FAX: 904-772-1973  
**Tallahassee**  
PHONE: 850-576-5177

Builder: **GN CONSTRUCTION**  
Equal Address: **Jeremiah Res.**

Job #: **Custom**  
Date: **6-6-23** Drawn By: **KLH** Original Ref #: **3544308**  
Floor 1 Job #: **N/A** Floor 2 Job #: **N/A** Roof Job #: **3544308**

MITEK PLATE APPROVAL #'S 2197.2-2197.4, BOISE EWP PRODUCT #'S LVL FL1644-R2, BCI JOISTS FL1392-R2