



Lumber design values are in accordance with ANSI/TPI 1 section 6.3
These truss designs rely on lumber values established by others.

73

RE: Sapp - Sapp

MiTek USA, Inc.

6904 Parke East Blvd.
Tampa, FL 33610-4115

Site Information:

Customer Info: Lee Holloway Project Name: . Model: .
Lot/Block: . Subdivision: .
Address: .
City: High Springs State: FL

Name Address and License # of Structural Engineer of Record, If there is one, for the building.

Name: License #:
Address:
City: State:

General Truss Engineering Criteria & Design Loads (Individual Truss Design Drawings Show Special Loading Conditions):

Design Code: FBC2020/TPI2014 Design Program: MiTek 20/20 8.4
Wind Code: ASCE 7-16 Wind Speed: 130 mph
Roof Load: 40.0 psf Floor Load: N/A psf

This package includes 4 individual, Truss Design Drawings and 0 Additional Drawings.

With my seal affixed to this sheet, I hereby certify that I am the Truss Design Engineer and this index sheet conforms to 61G15-31.003, section 5 of the Florida Board of Professional Engineers Rules.

No.	Seal#	Truss Name	Date
1	T23714102	A1GE	4/28/21
2	T23714103	A2	4/28/21
3	T23714104	A3	4/28/21
4	T23714105	A4	4/28/21

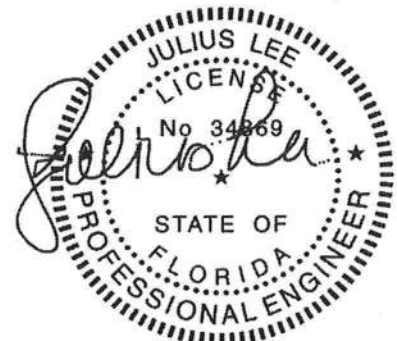


The truss drawing(s) referenced above have been prepared by MiTek USA, Inc. under my direct supervision based on the parameters provided by Mayo Truss Company, Inc..

Truss Design Engineer's Name: Lee, Julius

My license renewal date for the state of Florida is February 28, 2023.

IMPORTANT NOTE: The seal on these truss component designs is a certification that the engineer named is licensed in the jurisdiction(s) identified and that the designs comply with ANSI/TPI 1. These designs are based upon parameters shown (e.g., loads, supports, dimensions, shapes and design codes), which were given to MiTek or TRENCO. Any project specific information included is for MiTek's or TRENCO's customers file reference purpose only, and was not taken into account in the preparation of these designs. MiTek or TRENCO has not independently verified the applicability of the design parameters or the designs for any particular building. Before use, the building designer should verify applicability of design parameters and properly incorporate these designs into the overall building design per ANSI/TPI 1, Chapter 2.



Julius Lee PE No.34869
MiTek USA, Inc. FL Cert 6634
6904 Parke East Blvd. Tampa FL 33610
Date:

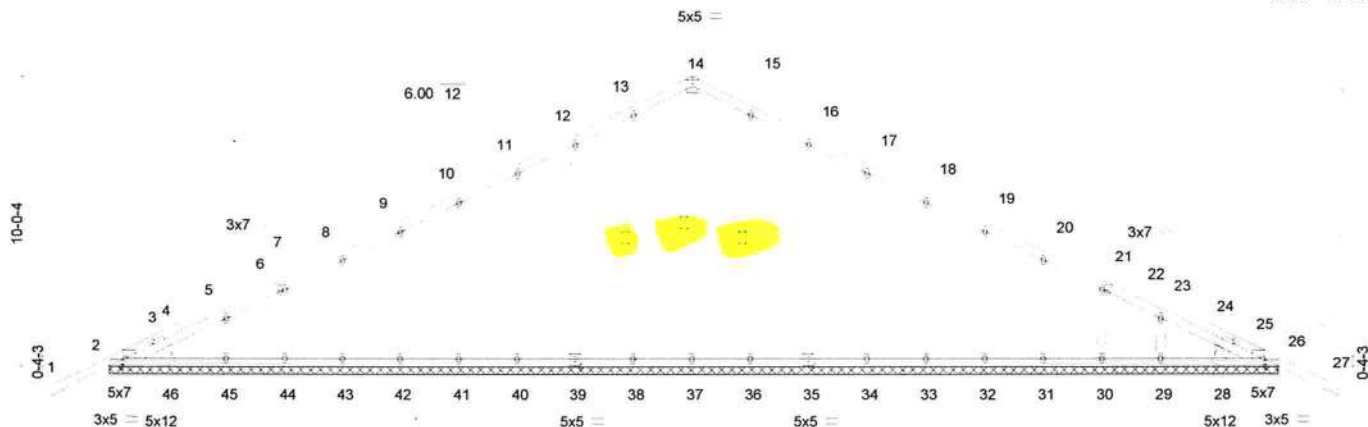
April 28, 2021

Lee, Julius

1 of 1

Job	Truss	Truss Type	Qty	Ply	Sapp	
SAPP	A1GE	Common Supported Gable	2	1		T23714102
Mayo Truss Company, Inc., Mayo, FL - 32066,		Job Reference (optional)				
		8.430 s Apr 20 2021 MiTek Industries, Inc. Mon Apr 26 11:58:46 2021 Page 1				
		ID: G6KJ33KEYBBBCnCxTraFqdzRVb0-uGmqS4AVPrM3bSt7VWQ94AIN0049KBx3E5DdNEzMs_t				
-2-0-0		20-0-0			40-0-0	42-0-0
2-0-0		20-0-0			20-0-0	2-0-0

Scale = 1:74.3



	40-0-0									
	40-0-0									
Plate Offsets (X,Y)–	[2:0-1-8,Edge], [2:0-3-8,Edge], [6:0-1-14,Edge], [22:0-1-14,Edge], [26:0-1-8,Edge], [26:0-3-8,Edge], [28:0-1-8,1-1-2], [35:0-2-8,0-3-0], [39:0-2-8,0-3-0], [46:0-1-8,1-1-2]									
LOADING (psf)	SPACING-	2-0-0	CSI.	DEFL.	in	(loc)	l/defl	L/d	PLATES	GRIP
TCLL 20.0	Plate Grip DOL	1.25	TC 0.31	Vert(LL)	-0.02	27	n/r	120	MT20	244/190
TCDL 10.0	Lumber DOL	1.25	BC 0.06	Vert(CT)	-0.03	27	n/r	120		
BCLL 0.0	Rep Stress Incr	YES	WB 0.13	Horz(CT)	0.01	26	n/a	n/a		
BCDL 10.0	Code	FBC2020/TPI2014	Matrix-S							
									Weight: 273 lb	FT = 20%

LUMBER-				BRACING-	
TOP CHORD	2x4 SP No.2			TOP CHORD	Structural wood sheathing directly applied or 6-0-0 oc purlins.
BOT CHORD	2x4 SP No.2			BOT CHORD	Rigid ceiling directly applied or 10-0-0 oc bracing.
OTHERS	2x4 SP No.2			WEBS	1 Row at midpt 14-37, 13-38, 15-36

REACTIONS. All bearings 40-0-0.
 (lb) - Max Horz 2=289(LC 10)
 Max Uplift All uplift 100 lb or less at joint(s) 38, 39, 40, 41, 42, 43, 44, 45, 36, 35, 34, 33, 32, 31, 30, 29 except 2=121(LC 12), 26=121(LC 12)
 Max Grav All reactions 250 lb or less at joint(s) 37, 38, 39, 40, 41, 42, 43, 44, 45, 46, 36, 35, 34, 33, 32, 31, 30, 29, 28 except 2=254(LC 1), 26=254(LC 1)

FORCES. (lb) - Max. Comp./Max. Ten. - All forces 250 (lb) or less except when shown.
 TOP CHORD 11-12=-116/274, 12-13=-117/335, 13-14=-136/387, 14-15=-136/387, 15-16=-117/335, 16-17=-96/274
 WEBS 14-37=-250/38

- NOTES-**
- Unbalanced roof live loads have been considered for this design.
 - Wind: ASCE 7-16; Vult=130mph (3-second gust) Vasd=101mph; TCCL=6.0psf; BCDL=6.0psf; h=15ft; B=45ft; L=40ft; eave=2ft; Cat. II; Exp C; Encl. GCPI=0.18; MWFRS (directional) and C-C Corner(3E) -2-0-0 to 2-0-0, Exterior(2N) 2-0-0 to 20-0-0, Corner(3R) 20-0-0 to 24-0-0, Exterior(2N) 24-0-0 to 42-0-0 zone; cantilever left and right exposed; end vertical left and right exposed; C-C for members and forces & MWFRS for reactions shown; Lumber DOL=1.60 plate grip DOL=1.60
 - Truss designed for wind loads in the plane of the truss only. For studs exposed to wind (normal to the face), see Standard Industry Gable End Details as applicable, or consult qualified building designer as per ANSI/TPI 1.
 - Building Designer / Project engineer responsible for verifying applied roof live load shown covers rain loading requirements specific to the use of this truss component.
 - All plates are 1.5x4 MT20 unless otherwise indicated.
 - Gable requires continuous bottom chord bearing.
 - Gable studs spaced at 2-0-0 oc.
 - This truss has been designed for a 10.0 psf bottom chord live load nonconcurrent with any other live loads.
 - * This truss has been designed for a live load of 20.0psf on the bottom chord in all areas where a rectangle 3-6-0 tall by 2-0-0 wide will fit between the bottom chord and any other members.
 - Provide mechanical connection (by others) of truss to bearing plate capable of withstanding 100 lb uplift at joint(s) 38, 39, 40, 41, 42, 43, 44, 45, 36, 35, 34, 33, 32, 31, 30, 29 except (j=lb) 2=121, 26=121.



Julius Lee PE No.34869
 MiTek USA, Inc. FL Cert 6634
 6904 Parke East Blvd. Tampa FL 33610
 Date:

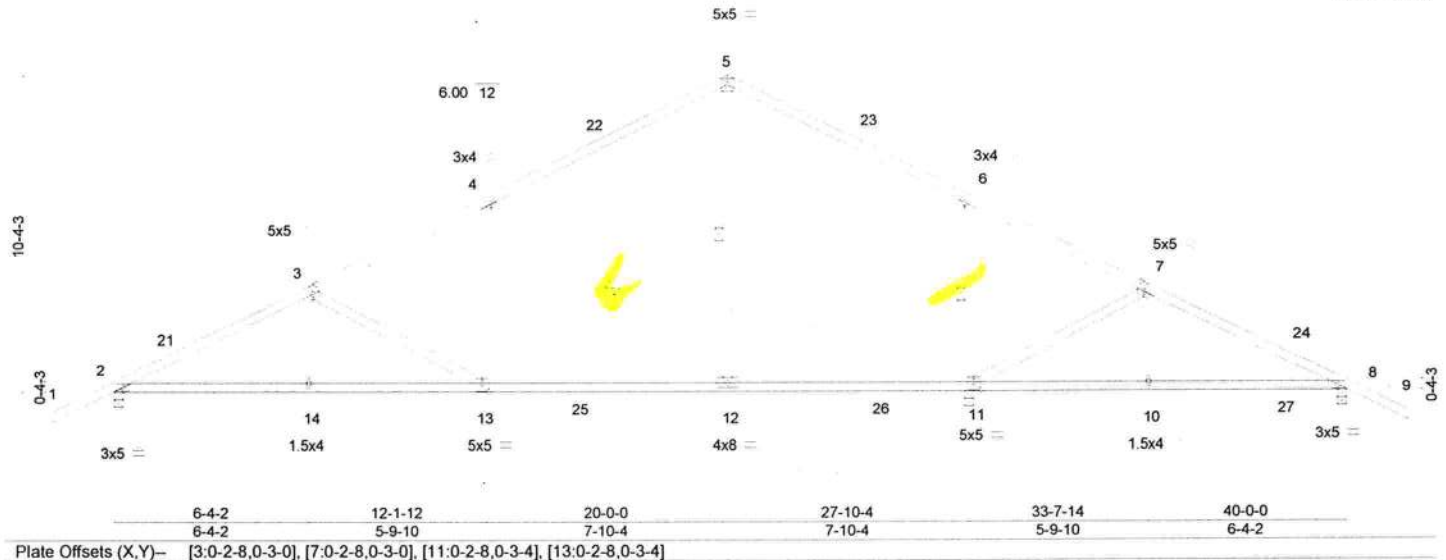
April 28,2021

WARNING - Verify design parameters and READ NOTES ON THIS AND INCLUDED MITTEK REFERENCE PAGE MII-7473 rev. 5/19/2020 BEFORE USE.
 Design valid for use only with MiTek® connectors. This design is based only upon parameters shown, and is for an individual building component, not a truss system. Before use, the building designer must verify the applicability of design parameters and properly incorporate this design into the overall building design. Bracing indicated is to prevent buckling of individual truss web and/or chord members only. Additional temporary and permanent bracing is always required for stability and to prevent collapse with possible personal injury and property damage. For general guidance regarding the fabrication, storage, delivery, erection and bracing of trusses and truss systems, see ANSI/TPI1 Quality Criteria, DSB-89 and BCSI Building Component Safety Information available from Truss Plate Institute, 2670 Crain Highway, Suite 203 Waldorf, MD 20601

MiTek
 6904 Parke East Blvd.
 Tampa, FL 33610

Job	Truss	Truss Type	Qty	Ply	Sapp	
SAPP	A2	Common	15	1		T23714103
Mayo Truss Company, Inc., Mayo, FL - 32066.						Job Reference (optional)
						8 430 s Apr 20 2021 MiTek Industries, Inc. Mon Apr 26 11:58:48 2021 Page 1
						ID:G6KJ33KEYYBBBCnCxTraFqdzRVb0-qeuatiClxScnqm1VdxSd9bNfBqdio0HLiPikS6zMs_r
-2-0-0	6-4-2	12-1-12	20-0-0	27-10-4	33-7-14	40-0-0
2-0-0	6-4-2	5-9-10	7-10-4	7-10-4	5-9-10	42-0-0
						2-0-0

Scale = 1:70.5



LOADING (psf)	SPACING-	2-0-0	CSI.	DEFL.	in (loc)	I/defl	L/d	PLATES	GRIP
TCLL 20.0	Plate Grip DOL	1.25	TC 0.54	Vert(LL)	-0.13 12-13	>999	240	MT20	244/190
TCDL 10.0	Lumber DOL	1.25	BC 0.70	Vert(CT)	-0.25 12-13	>999	180		
BCLL 0.0 *	Rep Stress Incr	YES	WB 0.46	Horz(CT)	0.04 11	n/a	n/a		
BCDL 10.0	Code FBC2020/TPI2014		Matrix-AS					Weight: 221 lb	FT = 20%

LUMBER-	BRACING-
TOP CHORD 2x4 SP No.2	TOP CHORD Structural wood sheathing directly applied.
BOT CHORD 2x4 SP No.2	BOT CHORD Rigid ceiling directly applied.
WEBS 2x4 SP No.2	WEBS 1 Row at midpt 4-12, 5-12, 6-11

REACTIONS.	(size)	2=0-3-8, 11=0-3-8, 8=0-3-8
Max Horz	2=-298(LC 10)	
Max Uplift	2=-225(LC 12), 11=-442(LC 12), 8=-262(LC 12)	
Max Grav	2=1299(LC 17), 11=2191(LC 2), 8=425(LC 22)	

FORCES.	(lb) - Max. Comp./Max. Ten. - All forces 250 (lb) or less except when shown.
TOP CHORD	2-3=-2052/260, 3-4=-1487/248, 4-5=-669/202, 5-6=-674/211, 6-7=-174/695, 7-8=-222/381
BOT CHORD	2-14=-102/1982, 13-14=-103/1977, 12-13=0/1434, 11-12=-507/357
WEBS	3-13=-613/128, 4-13=0/586, 4-12=-1037/253, 6-12=-191/1370, 6-11=-1662/440, 7-11=-555/644, 7-10=-393/240

- NOTES-**
- Unbalanced roof live loads have been considered for this design.
 - Wind: ASCE 7-16; Vult=130mph (3-second gust) Vasd=101mph; TCDL=6.0psf; BCDL=6.0psf; h=15ft; B=45ft; L=40ft; eave=5ft; Cat. II; Exp C; Encl., GCpi=0.18; MWFRS (directional) and C-C Exterior(2E) -2-0-0 to 2-0-0, Interior(1) 2-0-0 to 20-0-0, Exterior(2R) 20-0-0 to 24-0-0, Interior(1) 24-0-0 to 42-0-0 zone; cantilever left and right exposed; end vertical left and right exposed; porch right exposed; C-C for members and forces & MWFRS for reactions shown; Lumber DOL=1.60 plate grip DOL=1.60
 - Building Designer / Project engineer responsible for verifying applied roof live load shown covers rain loading requirements specific to the use of this truss component.
 - This truss has been designed for a 10.0 psf bottom chord live load nonconcurrent with any other live loads.
 - * This truss has been designed for a live load of 20.0psf on the bottom chord in all areas where a rectangle 3-6-0 tall by 2-0-0 wide will fit between the bottom chord and any other members, with BCDL = 10.0psf.
 - Provide mechanical connection (by others) of truss to bearing plate capable of withstanding 100 lb uplift at joint(s) except (jt=lb) 2=225, 11=442, 8=262.
 - This truss design requires that a minimum of 7/16" structural wood sheathing be applied directly to the top chord and 1/2" gypsum sheetrock be applied directly to the bottom chord.



Julius Lee PE No.34869
MiTek USA, Inc. FL Cert 6634
6904 Parke East Blvd. Tampa FL 33610
Date:

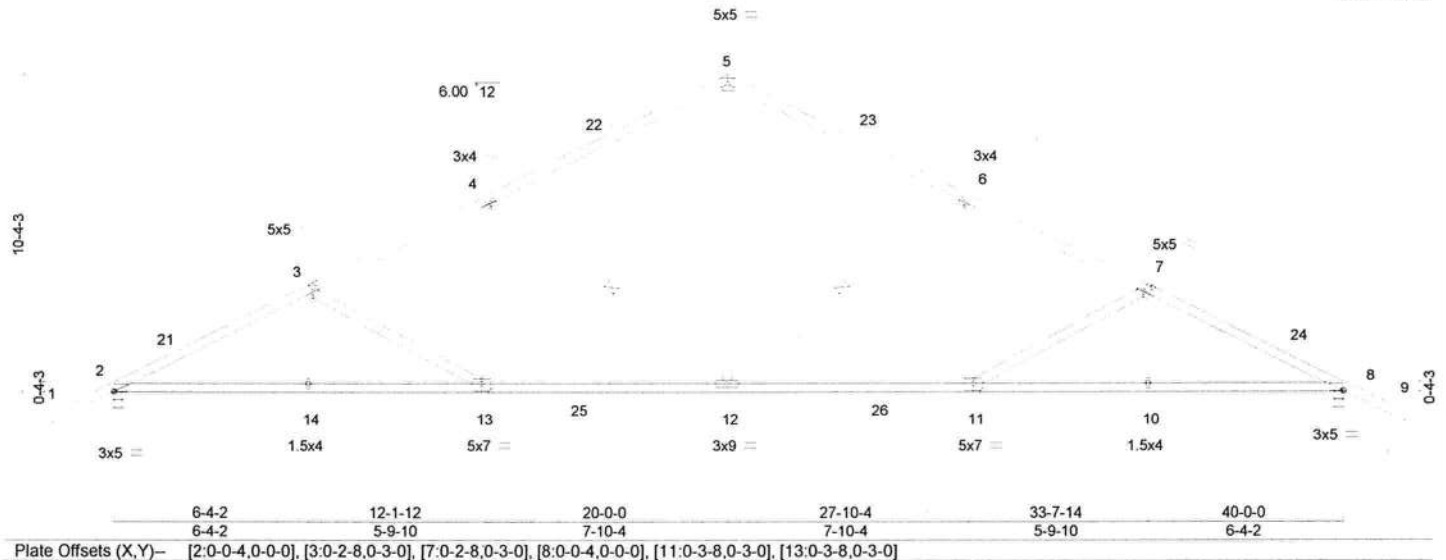
April 28,2021

WARNING - Verify design parameters and READ NOTES ON THIS AND INCLUDED MITEK REFERENCE PAGE MH-7473 rev. 5/19/2020 BEFORE USE.
Design valid for use only with MiTek® connectors. This design is based only upon parameters shown, and is for an individual building component, not a truss system. Before use, the building designer must verify the applicability of design parameters and properly incorporate this design into the overall building design. Bracing indicated is to prevent buckling of individual truss web and/or chord members only. Additional temporary and permanent bracing is always required for stability and to prevent collapse with possible personal injury and property damage. For general guidance regarding the fabrication, storage, delivery, erection and bracing of trusses and truss systems, see **ANSI/TPI1 Quality Criteria, DSB-89 and BCSI Building Component Safety Information** available from Truss Plate Institute, 2670 Crain Highway, Suite 203 Waldorf, MD 20601

MiTek
6904 Parke East Blvd.
Tampa, FL 33610

Job	Truss	Truss Type	Qty	Ply	Sapp	
SAPP	A3	Common	5	1		T23714104
Mayo Truss Company, Inc., Mayo, FL - 32066,						Job Reference (optional)
8.430 s Apr 20 2021 MiTek Industries, Inc. Mon Apr 26 11:58:50 2021 Page 1						ID:G6KJ33KEYBBBCnCxTraFqdzRVb0-n10LIRD?T3IV43BukLU5E0S_EdEaGwpe9jBqX?zMs_p
-2-0-0	6-4-2	12-1-12	20-0-0	27-10-4	33-7-14	40-0-0
2-0-0	6-4-2	5-9-10	7-10-4	7-10-4	5-9-10	6-4-2
						2-0-0

Scale = 1:70.5



LOADING (psf)	SPACING-	2-0-0	CSI.	DEFL.	in (loc)	I/defl	L/d	PLATES	GRIP
TCLL 20.0	Plate Grip DOL	1.25	TC 0.64	Vert(LL)	-0.28	11-12	>999	240	244/190
TCDL 10.0	Lumber DOL	1.25	BC 0.93	Vert(CT)	-0.53	12-13	>907	180	
BCLL 0.0 *	Rep Stress Incr	YES	WB 0.46	Horz(CT)	0.17	8	n/a	n/a	
BCDL 10.0	Code FBC2020/TPI2014	YES	Matrix-AS						
								Weight: 221 lb	FT = 20%

LUMBER-				BRACING-	
TOP CHORD	2x4 SP No.2			TOP CHORD	Structural wood sheathing directly applied.
BOT CHORD	2x4 SP No.2			BOT CHORD	Rigid ceiling directly applied.
WEBS	2x4 SP No.2			WEBS	1 Row at midpt 4-12, 6-12

REACTIONS.	(size) 2-0-3-8, 8-0-3-8
	Max Horz 2=298(LC 11)
	Max Uplift 2=312(LC 12), 8=312(LC 12)
	Max Grav 2=1953(LC 17), 8=1953(LC 18)

FORCES.	(lb) - Max. Comp./Max. Ten. - All forces 250 (lb) or less except when shown.
TOP CHORD	2-3=-3487/545, 3-4=-2939/542, 4-5=-2132/503, 5-6=-2132/503, 6-7=-2939/542, 7-8=-3488/545
BOT CHORD	2-14=-356/3263, 13-14=-358/3259, 12-13=-250/2733, 11-12=-273/2515, 10-11=-380/3036, 8-10=-379/3041
WEBS	3-13=-592/125, 5-12=-183/1414, 4-13=0/579, 4-12=-1030/248, 6-12=-1030/248, 6-11=0/579, 7-11=-593/125

- NOTES-**
- Unbalanced roof live loads have been considered for this design.
 - Wind: ASCE 7-16; Vult=130mph (3-second gust) Vasd=101mph; TCCL=6.0psf; BCDL=6.0psf; h=15ft; B=45ft; L=40ft; eave=5ft; Cat. II; Exp C; Encl., GCpi=0.18; MWFRS (directional) and C-C Exterior(2E) -2-0-0 to 2-0-0, Interior(1) 2-0-0 to 20-0-0, Exterior(2R) 20-0-0 to 24-0-0, Interior(1) 24-0-0 to 42-0-0 zone; cantilever left and right exposed; end vertical left and right exposed; C-C for members and forces & MWFRS for reactions shown; Lumber DOL=1.60 plate grip DOL=1.60
 - Building Designer / Project engineer responsible for verifying applied roof live load shown covers rain loading requirements specific to the use of this truss component.
 - This truss has been designed for a 10.0 psf bottom chord live load nonconcurrent with any other live loads.
 - * This truss has been designed for a live load of 20.0psf on the bottom chord in all areas where a rectangle 3-6-0 tall by 2-0-0 wide will fit between the bottom chord and any other members, with BCDL = 10.0psf.
 - Provide mechanical connection (by others) of truss to bearing plate capable of withstanding 100 lb uplift at joint(s) except (it=lb) 2=312, 8=312.
 - This truss design requires that a minimum of 7/16" structural wood sheathing be applied directly to the top chord and 1/2" gypsum sheetrock be applied directly to the bottom chord.



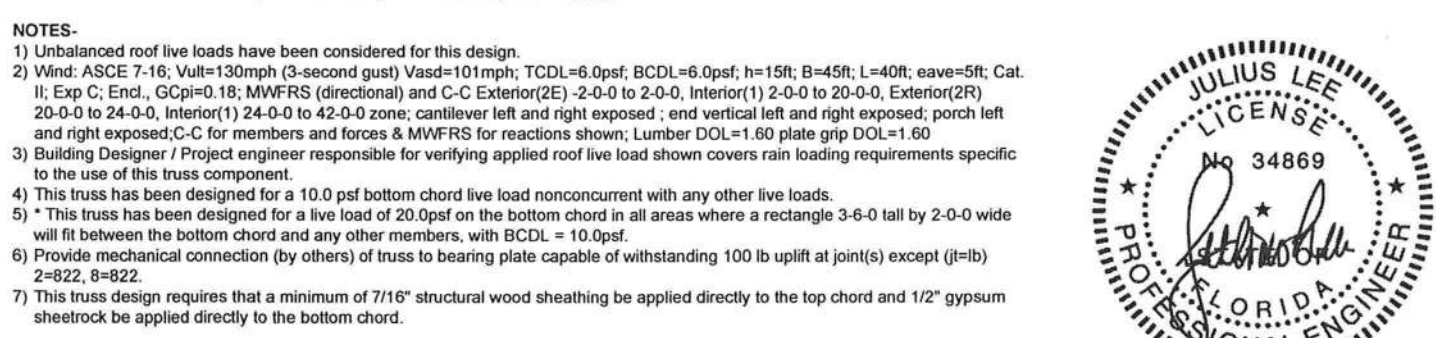
Julius Lee PE No.34869
MiTek USA, Inc. FL Cert 6634
6904 Parke East Blvd. Tampa FL 33610
Date:

April 28,2021

WARNING - Verify design parameters and READ NOTES ON THIS AND INCLUDED MITTEK REFERENCE PAGE MII-7473 rev. 5/19/2020 BEFORE USE.
Design valid for use only with MiTek® connectors. This design is based only upon parameters shown, and is for an individual building component, not a truss system. Before use, the building designer must verify the applicability of design parameters and properly incorporate this design into the overall building design. Bracing indicated is to prevent buckling of individual truss web and/or chord members only. Additional temporary and permanent bracing is always required for stability and to prevent collapse with possible personal injury and property damage. For general guidance regarding the fabrication, storage, delivery, erection and bracing of trusses and truss systems, see **ANSI/TPI1 Quality Criteria, DSB-89 and BCSI Building Component Safety Information** available from Truss Plate Institute, 2670 Crain Highway, Suite 203 Waldorf, MD 20601

MiTek
6904 Parke East Blvd.
Tampa, FL 33610

Scale = 1:70.5

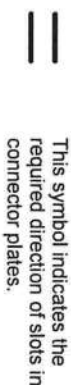
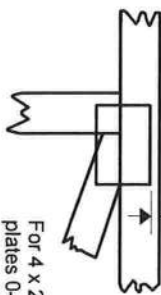
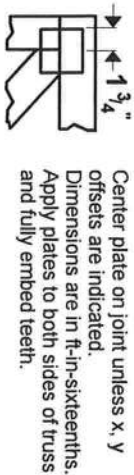


WARNING - Verify design parameters and READ NOTES ON THIS AND INCLUDED MITEK REFERENCE PAGE MJL-7473 rev. 5/19/2020 BEFORE USE. Design valid for use only with MiteK® connectors. This design is based only upon parameters shown, and is for an individual building component, not a truss system. Before use, the building designer must verify the applicability of design parameters and properly incorporate this design into the overall building design. Bracing indicated is to prevent buckling of individual truss web and/or chord members only. Additional temporary and permanent bracing is always required for stability and to prevent collapse with possible personal injury and property damage. For general guidance regarding the fabrication, storage, delivery, erection and bracing of trusses and truss systems, see **ANSI/TPI1 Quality Criteria, DSB-99 and BCSI Building Component Safety Information** available from Truss Plate Institute, 2670 Crain Highway, Suite 203 Waldorf, MD 20601



Symbols

PLATE LOCATION AND ORIENTATION



* Plate location details available in MITek 20/20 software or upon request.

PLATE SIZE

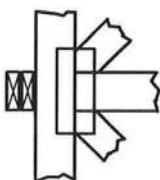
4 X 4

The first dimension is the plate width measured perpendicular to slots. Second dimension is the length parallel to slots.

LATERAL BRACING LOCATION



BEARING

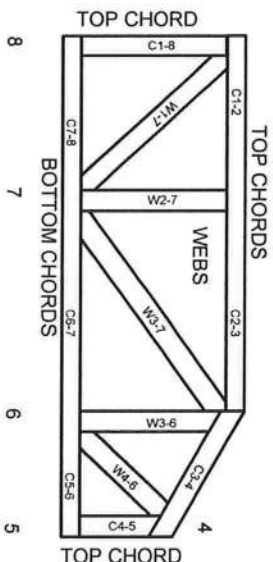


Indicates location where bearings (supports) occur. Icons vary but reaction section indicates joint number where bearings occur. Min size shown is for crushing only.

Industry Standards:

ANSI/TPI1: National Design Specification for Metal Plate Connected Wood Truss Construction.
DSB-89: Design Standard for Bracing.
BCSI: Building Component Safety Information, Guide to Good Practice for Handling, Installing & Bracing of Metal Plate Connected Wood Trusses.

Numbering System



JOINTS ARE GENERALLY NUMBERED/LETTERED CLOCKWISE AROUND THE TRUSS STARTING AT THE JOINT FARTHEST TO THE LEFT.

CHORDS AND WEBS ARE IDENTIFIED BY END JOINT NUMBERS/LETTERS.

PRODUCT CODE APPROVALS

ICC-ES Reports:

ESR-1311, ESR-1352, ESR1988
ER-3907, ESR-2362, ESR-1397, ESR-3282

Trusses are designed for wind loads in the plane of the truss unless otherwise shown.

Lumber design values are in accordance with ANSI/TPI 1 section 6.3 These truss designs rely on lumber values established by others.

© 2012 MITek® All Rights Reserved



MITek Engineering Reference Sheet: MIL-7473 rev. 5/19/2020

General Safety Notes

Failure to Follow Could Cause Property Damage or Personal Injury

1. Additional stability bracing for truss system, e.g. diagonal or X-bracing, is always required. See BCSI.
2. Truss bracing must be designed by an engineer. For wide truss spacing, individual lateral braces themselves may require bracing, or alternative Tor I bracing should be considered.
3. Never exceed the design loading shown and never stack materials on inadequately braced trusses.
4. Provide copies of this truss design to the building designer, erection supervisor, property owner and all other interested parties.
5. Cut members to bear tightly against each other.
6. Place plates on each face of truss at each joint and embed fully. Knots and wane at joint locations are regulated by ANSI/TPI 1.
7. Design assumes trusses will be suitably protected from the environment in accord with ANSI/TPI 1.
8. Unless otherwise noted, moisture content of lumber shall not exceed 19% at time of fabrication.
9. Unless expressly noted, this design is not applicable for use with fire retardant, preservative treated, or green lumber.
10. Camber is a non-structural consideration and is the responsibility of truss fabricator. General practice is to camber for dead load deflection.
11. Plate type, size, orientation and location dimensions indicated are minimum plating requirements.
12. Lumber used shall be of the species and size, and in all respects, equal to or better than that specified.
13. Top chords must be sheathed or purlins provided at spacing indicated on design.
14. Bottom chords require lateral bracing at 10 ft. spacing, or less, if no ceiling is installed, unless otherwise noted.
15. Connections not shown are the responsibility of others.
16. Do not cut or alter truss member or plate without prior approval of an engineer.
17. Install and load vertically unless indicated otherwise.
18. Use of green or treated lumber may pose unacceptable environmental, health or performance risks. Consult with project engineer before use.
19. Review all portions of this design (front, back, words and pictures) before use. Reviewing pictures alone is not sufficient.
20. Design assumes manufacture in accordance with ANSI/TPI 1 Quality Criteria.
21. The design does not take into account any dynamic or other loads other than those expressly stated.