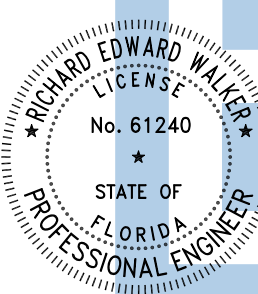


This item has been digitally signed and sealed by Richard E. Walker, P.E. on the date adjacent to the seal. Printed copies of this document are not considered signed and sealed and the signature must be verified on any electronic copies.



Digitally signed  
by Richard E Walker  
Date: 2024.12.09 10:00:09-05'00'

SCOPE OF WORK:  
PROPOSED METAL BUILDING FOUNDATION & EXTERNAL SHELL STRUCTURAL DESIGN ONLY. ALL OTHER REQUIRED PERMITS TO BUILD OUT TO A HABITABLE LIVING SPACE ARE TO BE BY OTHERS, INCLUDING BUT NOT LIMITED TO, ELECTRICAL, PLUMBING, ENERGY CALCULATIONS, ETC.

FRAMING NOTES:  
1. ALL FRAME MEMBERS ARE 2.5"x2.5"x14 GA TS U.N.O.  
2. MAX. RAFTER SPACING = 4'-0"  
3. U-BRACE = 2.5"x2"x18 GA CHANNEL  
4. PURLIN = 1.5" X 18GA HAT CHANNEL  
5. KNEE BRACE = 2.5"x2"x18GA CHANNEL  
6. R1=2.5" X 2.5"x14 GA TS LEAN TO RAFTER  
7. R2=2.5" X 2.5"x14 GA TS LEAN TO RAFTER

- - 2.5X2.5X14GA COLUMN  
■ - (2) 2.5X2.5X14GA COLUMN

FLORIDA ENGINEERING LLC

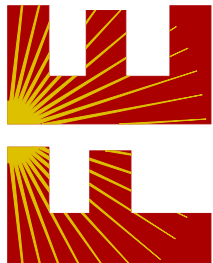
4161 TAMiami TRAIL, UNIT 101  
PORT CHARLOTTE, FLORIDA 33952

(941) 391-5980

FLeng.com

Orders@FLeng.com

CA CERT. #30782



PROJECT NO. 2432306

CONTRACTOR:  
TUBULAR BUILDING SYSTEMS  
P.O. BOX. 2254  
LAKE CITY, FL 32056

PROJECT ADDRESS:  
CJ CUSTOM CARPENTRY INC  
545 SW LEGION DR  
LAKE CITY, FL 32024

DESIGN DATE: 12/03/2024

REVISION 1: DATE

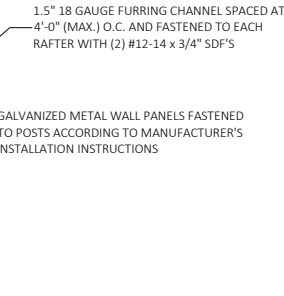
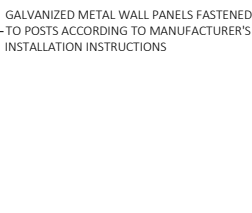
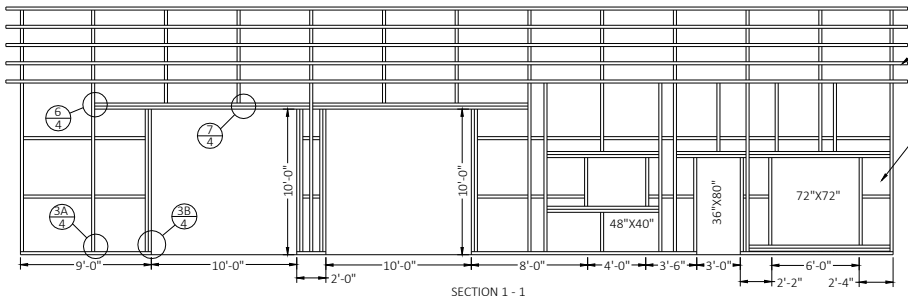
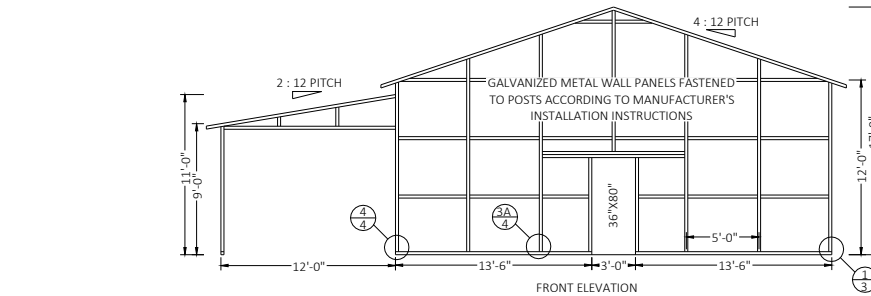
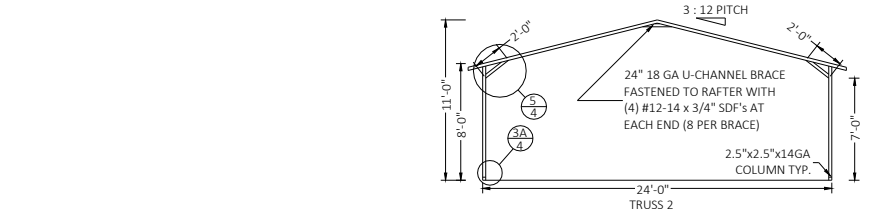
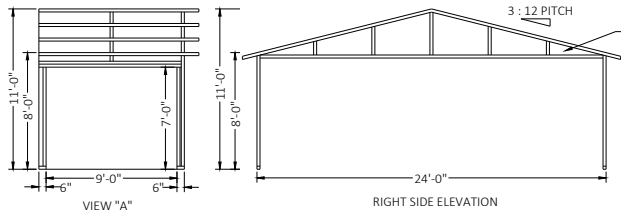
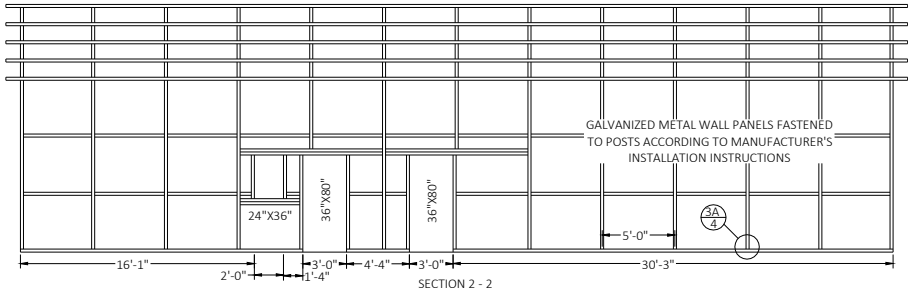
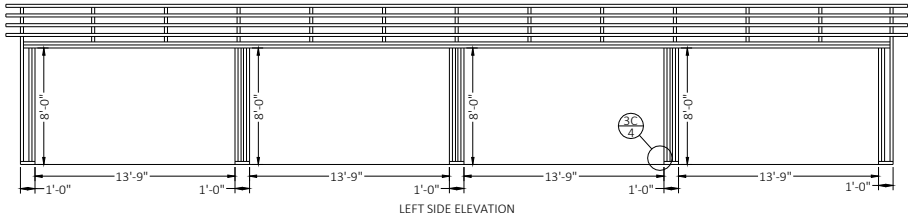
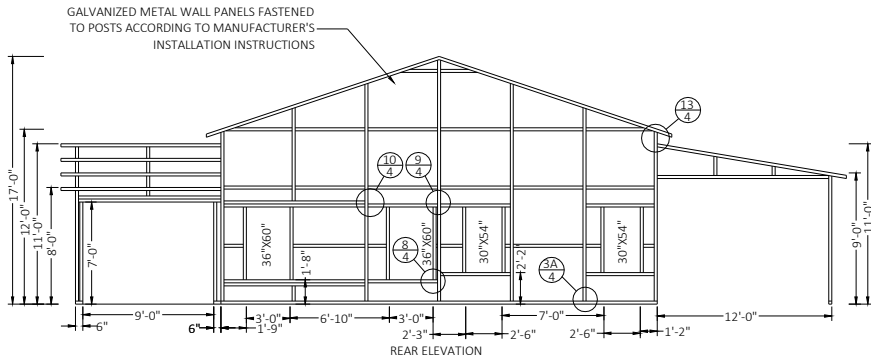
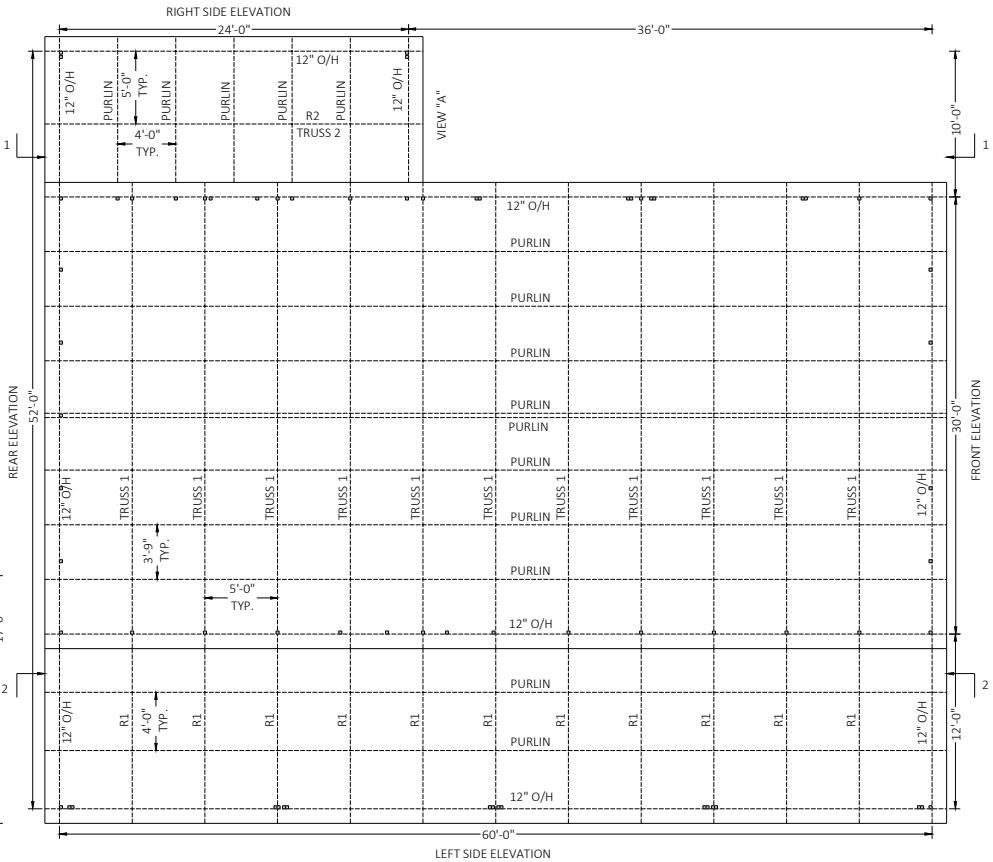
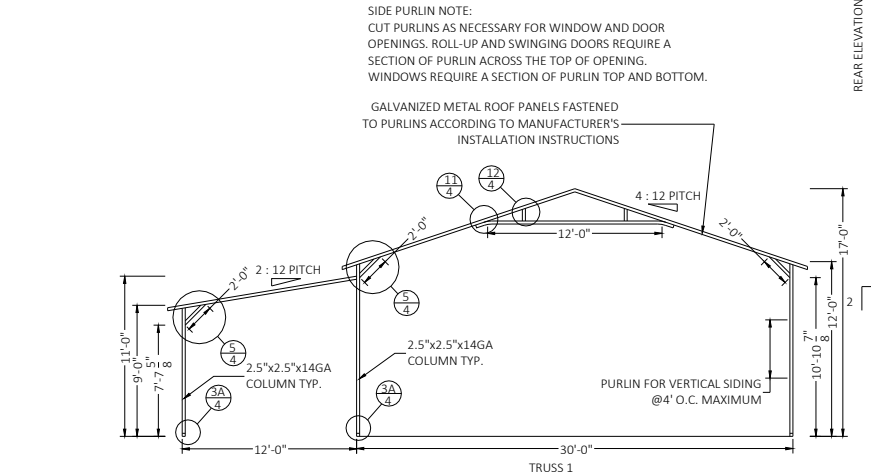
REVISION 2: DATE

DRAWN BY: TCP

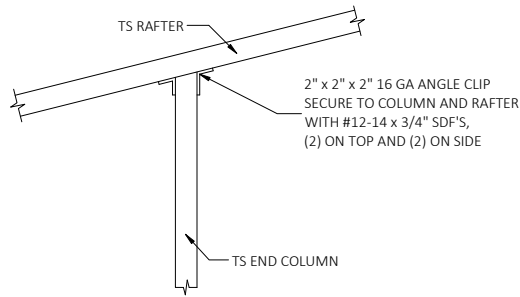
SCALE: NTS

SHEET:

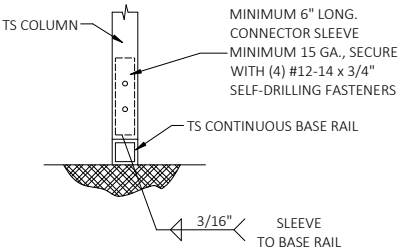
02



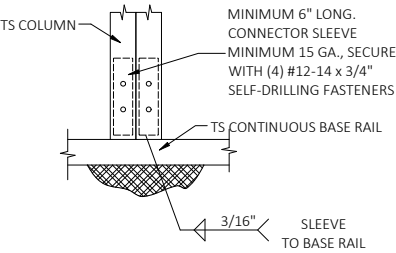




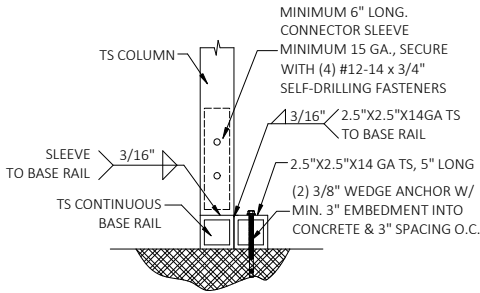
2 END POST/RAFTER CONNECTION DETAIL SCALE: NTS



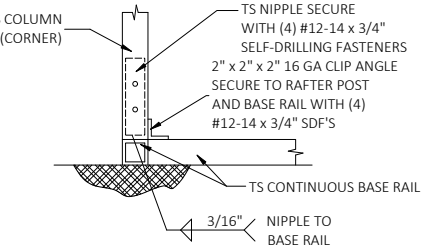
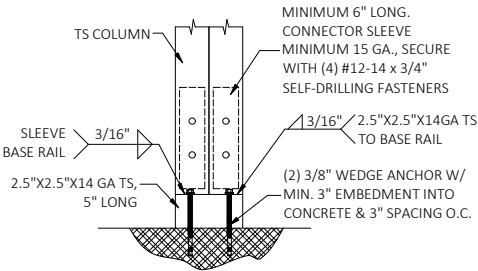
3A RAFTER POST/BASE RAIL CONNECTION DETAIL SCALE: NTS



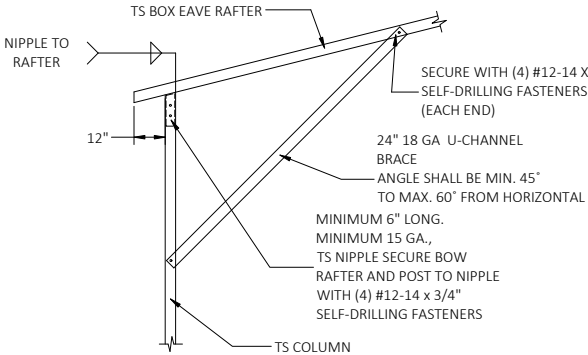
3B RAFTER POST/BASE RAIL CONNECTION DETAIL SCALE: NTS



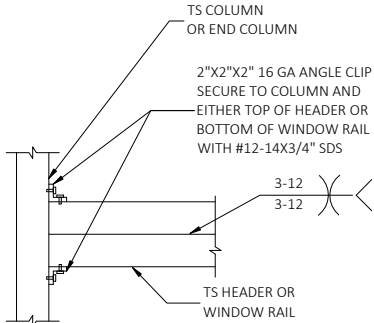
3C LEAN-TO POST/BASE RAIL CONNECTION DETAIL SCALE: NTS



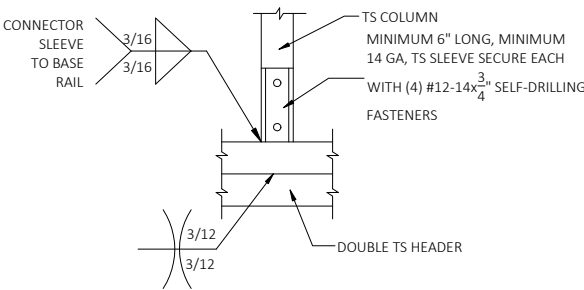
4 END POST/BASE RAIL CONNECTION DETAIL SCALE: NTS



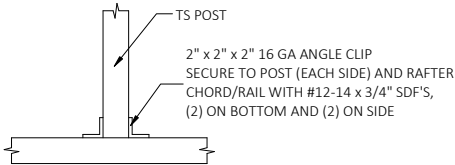
5 BOX EAVE RAFTER/CORNER POST CONNECTION DETAIL SCALE: NTS



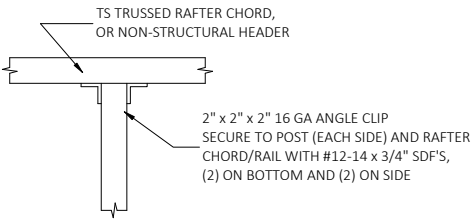
6 DOUBLE HEADER TO COLUMN CONNECTION DETAIL SCALE: NTS



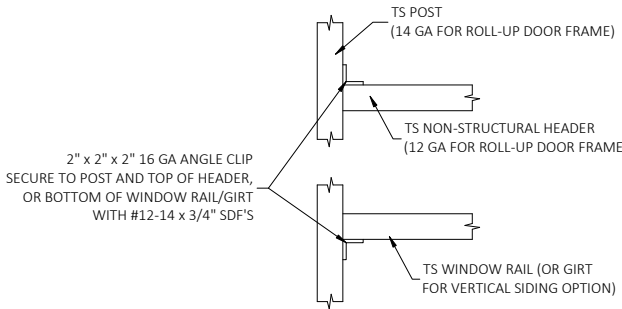
7 COLUMN/DOUBLE HEADER CONNECTION DETAIL SCALE: NTS



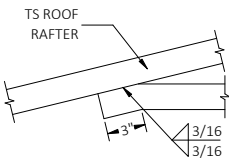
8 POST TO NON-STRUCTURAL HEADER, BASE, RAIL OR WINDOW RAIL CONNECTION DETAIL SCALE: NTS



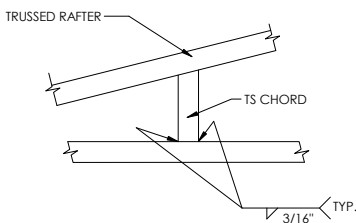
9 POST TO NON-STRUCTURAL HEADER, BASE, RAIL OR WINDOW RAIL CONNECTION DETAIL SCALE: NTS



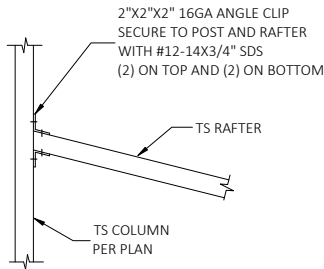
10 NON-STRUCTURAL HEADER OR WINDOW RAIL TO POST CONNECTION DETAIL SCALE: NTS



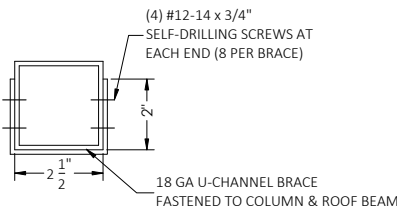
11 COLLAR-TIE CONNECTION SCALE: NTS



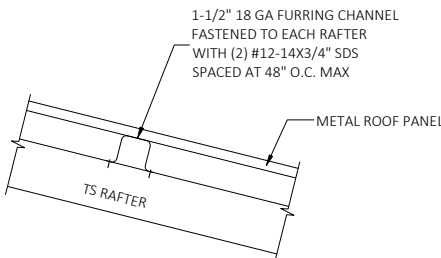
12 CHORD/RAFTER CONNECTION DETAIL SCALE: NTS



13 LEAN TO RAFTER/COLUMN CONNECTION SCALE: NTS

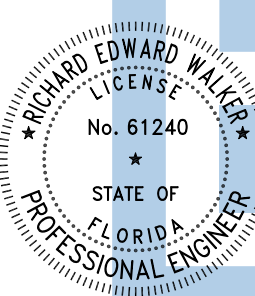


14 BRACE SECTION SCALE: NTS



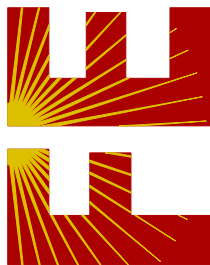
15 PANEL ATTACHMENT (ALTERNATE FOR VERTICAL ROOF PANELS) SCALE: NTS

This item has been digitally signed and sealed by Richard E. Walker, P.E. on the date adjacent to the seal. Printed copies of this document are not considered signed and sealed and the signature must be verified on any electronic copies.



Digitally signed by Richard E Walker  
Date: 2024.12.09 10:00:08-05'00'

FLORIDA ENGINEERING LLC  
4161 TAMiami TRAIL, UNIT 101  
PORT CHARLOTTE, FLORIDA 33952  
(941) 391-5980  
FLEng.com  
Orders@FLEng.com



CA CERT. #30782

PROJECT NO. 2432306

CONTRACTOR:  
TUBULAR BUILDING SYSTEMS  
P.O. BOX. 2254  
LAKE CITY, FL 32056

PROJECT ADDRESS:  
CJ CUSTOM CARPENTRY INC  
545 SW LEGION DR  
LAKE CITY, FL 32024

DESIGN DATE: 12/03/2024

REVISION 1: DATE

REVISION 2: DATE

DRAWN BY: TCP

SCALE: NTS

SHEET:

04