

ALL DRAWINGS NOT TO BE SCALED, WRITTEN DIMENSIONS TAKE PRECEDENCE OVER SCALED DIMENSIONS



FRONT ELEVATION

SCALE: 1/4" = 1'



LEFT ELEVATION

SCALE: 1/4" = 1'



RIGHT ELEVATION

SCALE: 1/4" = 1'

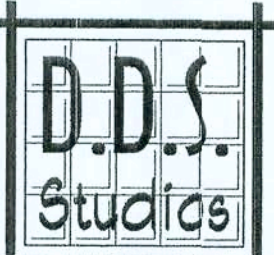


REAR ELEVATION

SCALE: 1/4" = 1'

Daniel Shaheen
Daniel Shaheen

October 11, 2005



ARCHITECTURAL
DESIGN

P.O. Box 273
Lake City, FL 32056
(386) 754-0181

COPYRIGHTED BY:

ENGINEERED BY:

A SPECULATIVE HOME BY EUPH INC.

THE NATHAN 4-BED

LOT 5, CANNON CREEK

COPYRIGHT: 2004 DDS STUDIOS

PROJECT INFO:

EXTERIOR ELEVATIONS

SHEET NUMBER

1 of 3

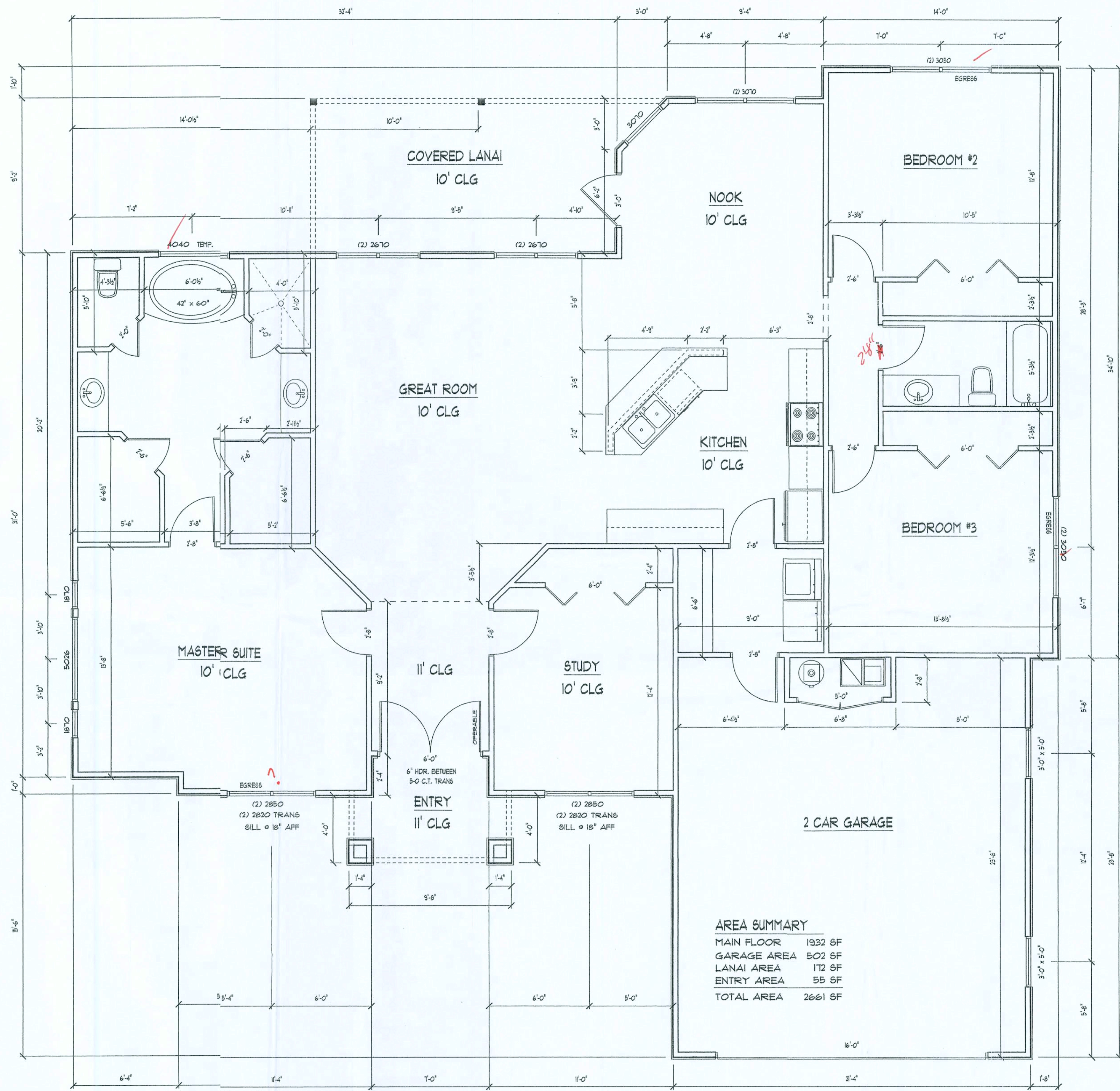
All work shall comply with
the standard building codes,
and all applicable local
codes and ordinances.

Contractor shall verify all
dimensions prior to
commencing construction.

ALL DRAWINGS NOT TO BE SCALED. WRITTEN DIMENSIONS TAKE PRECEDENCE OVER SCALED DIMENSIONS

- SEE PLANS FOR WALL HEIGHTS
- 16" OVERHANG (TYPICAL)
- GAF-TIMBERLINE SHINGLES// 4-NAILS IN EACH SHINGLE STRIP ON 30-LB FELT PAFR OVER 7/16" ORIENTED STRAND BOARD ROOF SHEATHING FASTENED AS PER WINDLOAD ANALYSIS
 - FLASHING: 26 ga. GALVANIZED STEEL
 - PRE-ENGINEERED WOOD ROOF TRUSSES AT 24" O.C. (SELECT TRUSS CONNECTORS PER WINDLOAD ANALYSIS)
 - BLOWN-IN INSULATION EQUAL TO R-30
 - (2) 2X4 SYP DOUBLE TOP PLATE
NOTE: SEAL ALL PENETRATIONS IN TOP PLATE AND FIRE STOP BLOCKING WITH CODE APPROVED SEALANT
 - 2x8 P.T. FASCIA // 1X4 DRP NAILER
 - ALUMINUM DRIP EDGE MOLDING, AND VENTED SOFFIT
 - INTERIOR FINISH - 1/2" GYPSUM WALLBOARD
 - 2X4 #2 SPF PRECUT STUDS AT 16" O.C. WITH FULL-THICK FIBERGLASS INSULATION EQUAL TO R-11
 - EXTERIOR FINISH TO BE HIRDI-PLANK LAP SIDING
 - 7/16" O.S.B. WALL SHEATHING (BLOCK ALL EDGES) FASTENED AS PER WINDLOAD ANALYSIS
 - FLOORING AND INTERIOR RIM PER SPECIFICATIONS
 - 4" CONCRETE FLOOR SLAB REINFORCED WITH WELDED WIRE MESH EMBEDDED 2" IN SLAB ON 6 MIL POLY VAPOR BARRIER (6" LAPS SEALED WITH POLY TAPE) OVER COMPACTED FILL TREATED WITH TERMITICIDE
 - 2 x 4 P.T. PINE SOLE PLAE ANCHORED WITH WITH ANCHOR BOLTS AS PER WINDLOAD ANALYSIS
 - 1-#5, CONTINUOUS, IN CONCRETE BOND BEAM AT SLAB EDGE INTERSECTION WITH STEMWALL
 - APPROXIMATE FINISH GRADE

TYPICAL WALL SECTION
SCALE: 1" = 1'0"



Daniel Shaheen
Daniel Shaheen

October 11, 2005



**ARCHITECTURAL
DESIGN**
P.O. Box 273
LAKE CITY FL 32056
(386) 754-0181

COPYRIGHTED BY:

ENGINEERED BY:

A SPECULATIVE HOME BY EUPH INC.
THE NATHAN 4-BED
LOT 5, CANNON CREEK
COPYRIGHT: 2004 DDS STUDIOS

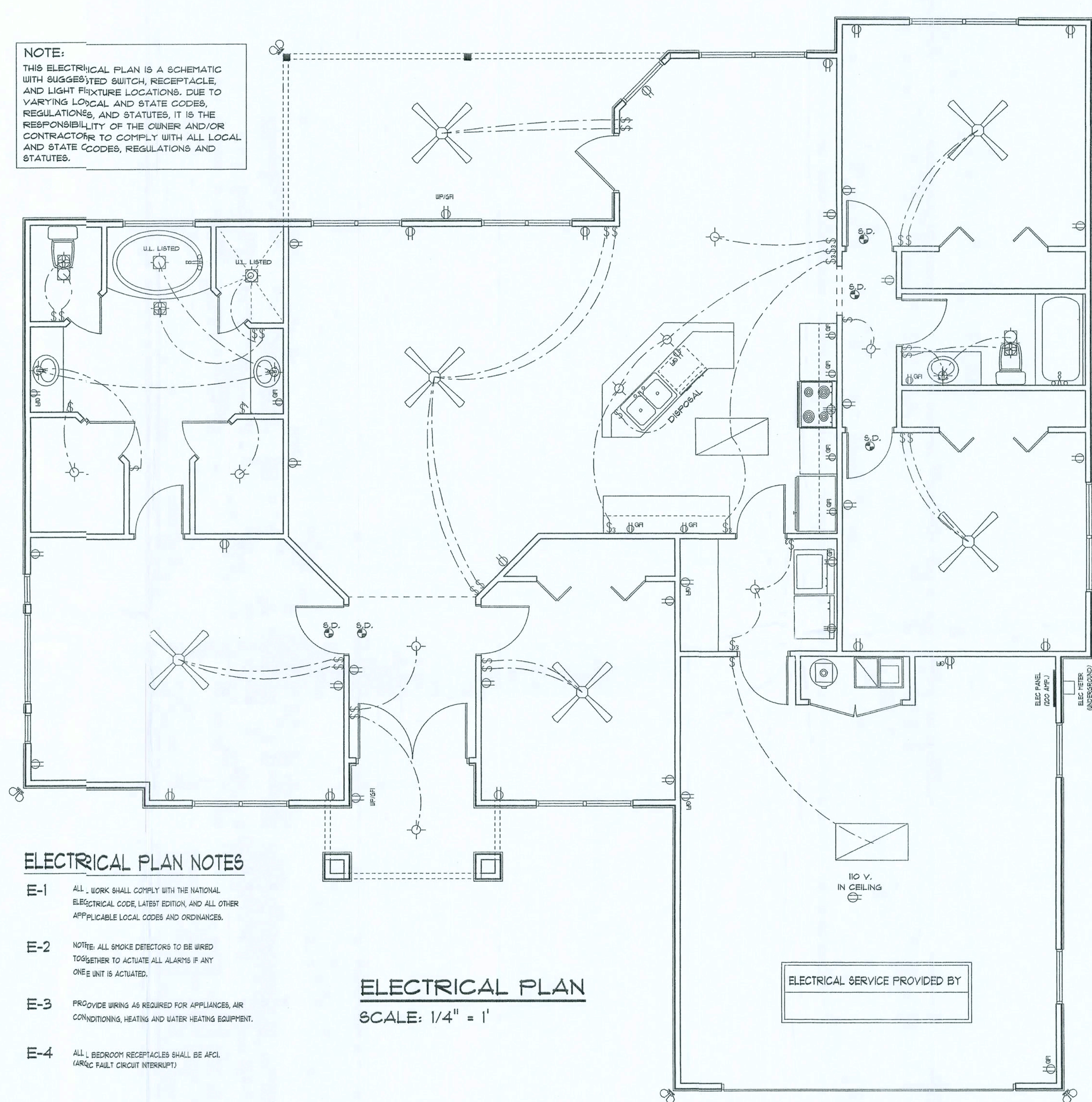
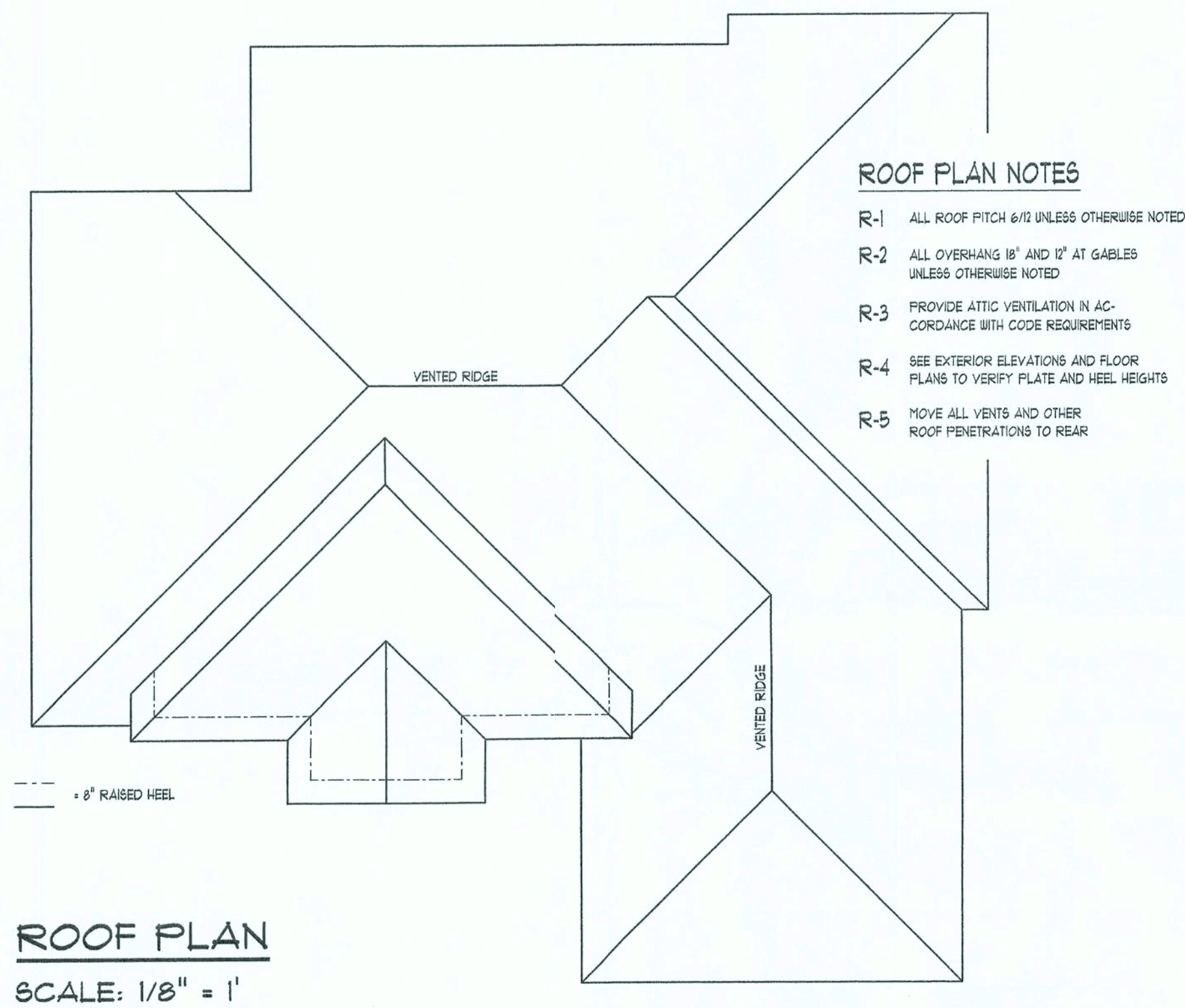
PROJECT INFO:

FLOOR PLAN
TYPICAL WALL SECTION

SHEET NUMBER
2 of 3

All work shall comply with the standard building codes, and all applicable local codes and ordinances.
Contractor shall verify all dimensions prior to commencing construction.

ALL DRAWINGS NOT TO BE SCALED. WRITTEN DIMENSIONS TAKE PRECEDENCE OVER SCALED DIMENSIONS



Daniel Shaheen
Daniel Shaheen

October 11, 2005



ARCHITECTURAL
DESIGN
P.O. BOX 273
LAKE CITY FL 32056
(386) 754-0181

COPYRIGHTED BY:

ENGINEERED BY:

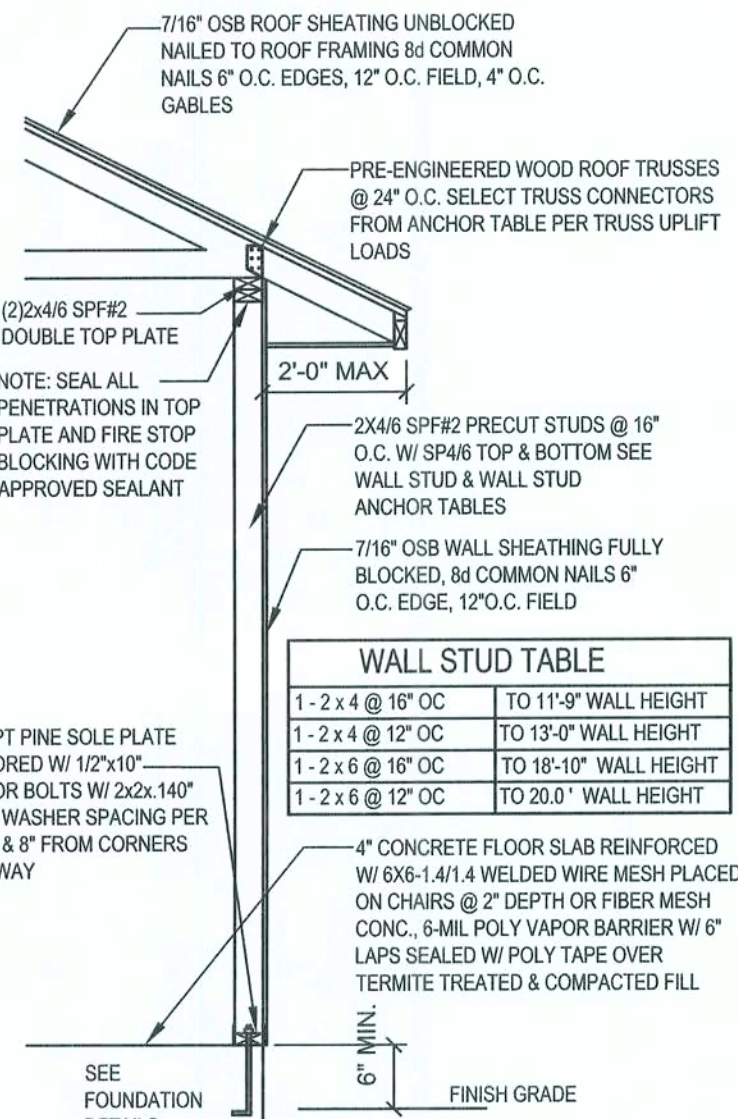
A SPECULATIVE HOME BY EUPH INC.
THE NATHAN 4-BED
LOT 5, CANNON CREEK
COPYRIGHT: 2004 DDS STUDIOS

PROJECT INFO:

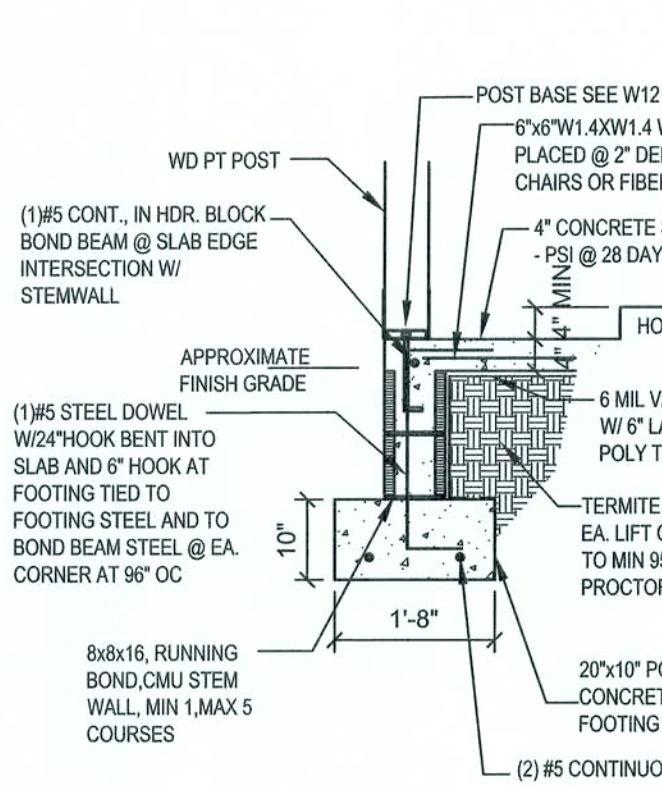
ROOF PLAN
ELECTRICAL PLAN

SHEET NUMBER
3 of 3

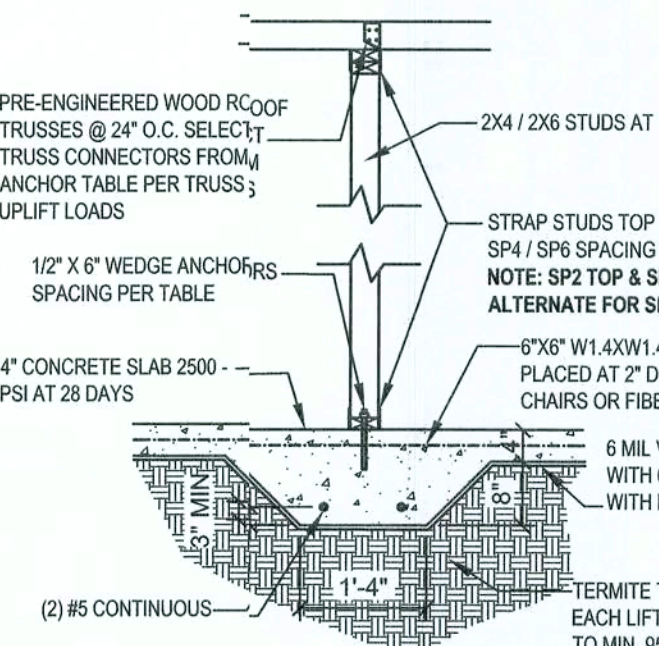
All work shall comply with the standard building code, and all applicable local codes and ordinances.
Contractor shall verify all dimensions prior to commencing construction.



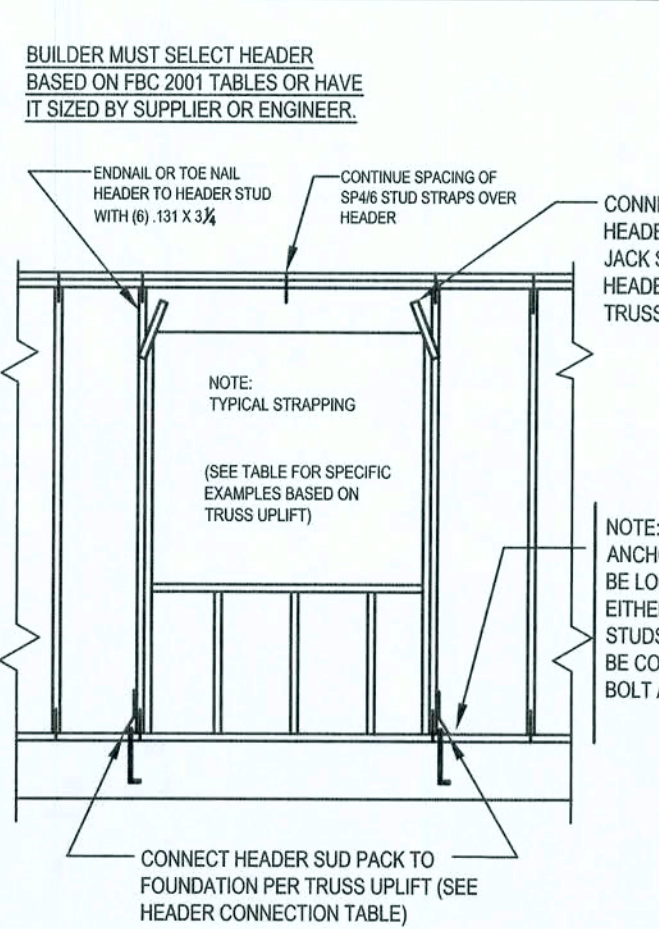
F1 - STEM WALL FOUNDATION
SCALE: 1/2\"/>



F10 - STEM WALL PORCH FOOTING
SCALE: 1/2\"/>



F4 - INTERIOR BEARING FOOTING
SCALE: 1/2\"/>



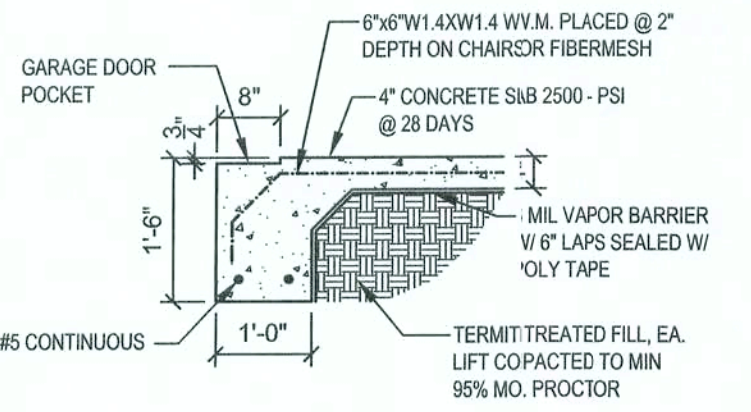
W13-TYPICAL HEADER SIZING & STRAPPING DETAIL
SCALE: N.T.S. REV-22-AUG-03

TYPICAL TRUSS UPLIFT & MAX 12'x10' WALL HEIGHT	ANCHOR BOLT SPACING	SP1 / SP5 SPACING	ALTERNATE STRAPPING SPACING
770 LB	48" O.C.	48" O.C.	N/A
950 LB	48" O.C.	32" O.C.	N/A
1270 LB	32" O.C.	16" O.C.	32" O.C.
1500 LB	24" O.C.	16" O.C.	16" O.C.
2200 LB	LTS11 W/ 56" X 2" WEDGE ANCHOR	N/A	(2) HTS20 NAILED TO STUD PACK

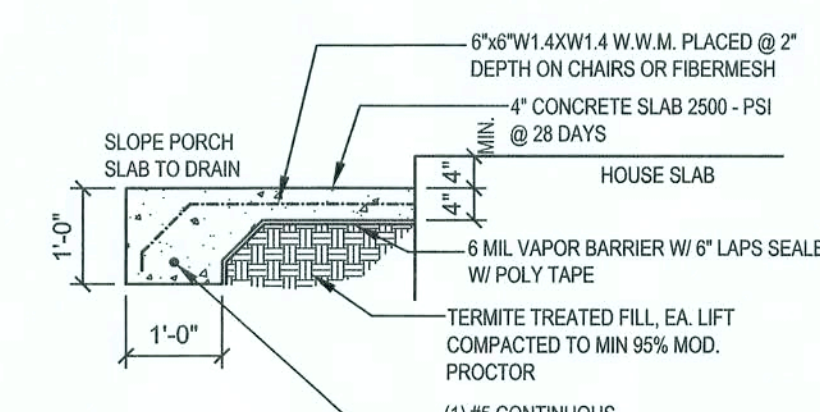
NOTE: SP2 TOP & SP1 BOTTOM ALTERNATE FOR SP4/6

NOTE: MINIMUM ANCHOR BOLT SPACING FOR WALLS WITH A HEIGHT GREATER THAN 10'-0" AND LESS THAN 14'-0" SHALL BE 32" O.C.

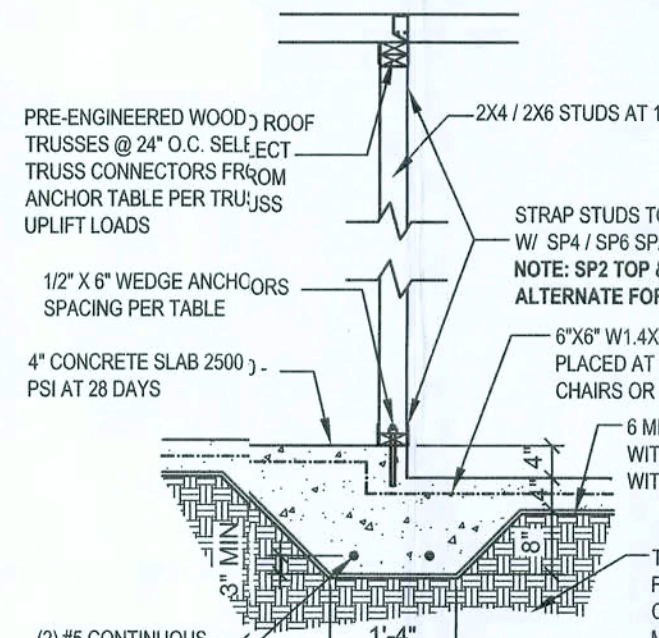
W1 - SINGLE STORY EXT. WALL SECTION
SCALE: 1/2\"/>



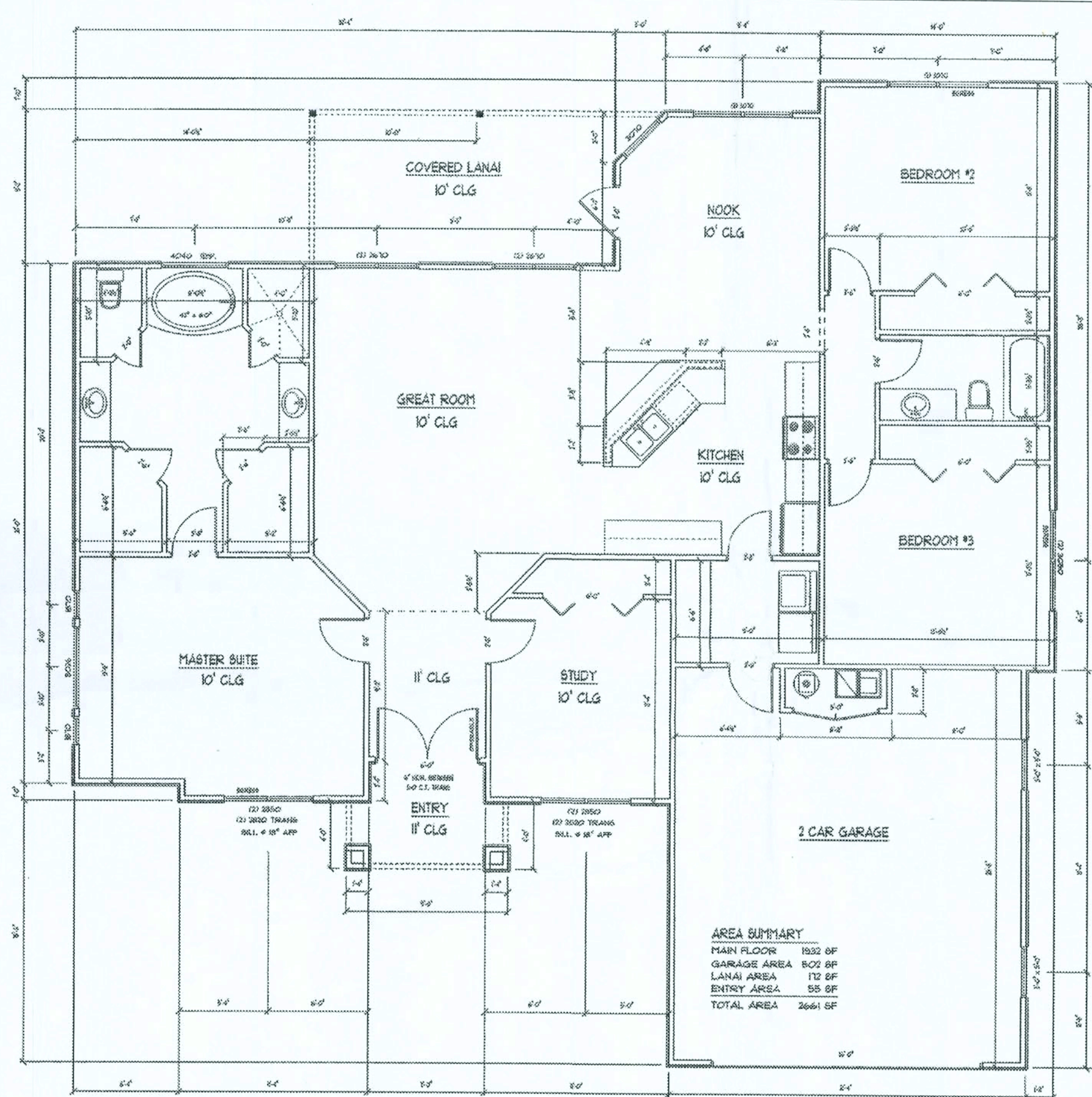
F8 - GARAGE DOOR POCKET
SCALE: 1/2\"/>



F2 - PORCH SLAB
SCALE: 1/2\"/>



F5 - INTERIOR BEARING STEP FOOTING
SCALE: 1/2\"/>



N2-GENERAL NOTES:

CONCRETE: MINIMUM COMPRESSIVE STRENGTH OF CONCRETE AT 28 DAYS SHALL BE $f_c = 3000$ PSI WHERE EXCESS WATER IS ADDED TO THE CONCRETE SO THAT ITS SERVICABILITY IS DEGRADED. THE ATTAINMENT OF REQUIRED STRENGTH SHALL NOT RELEASE THE CONTRACTOR FROM PROVIDING SUCH MODIFICATIONS AS MAY BE REQUIRED BY THE ENGINEER TO PROVIDE A SERVICEABLE MEMBER OR SURFACE. ALL CONCRETE SHALL BE VIBRATED. NO REPAIR OR RUBBING OF CONCRETE SURFACES SHALL BE MADE PRIOR TO INSPECTION BY AND APPROVAL OF THE ENGINEER, OWNER OR HIS REPRESENTATIVE.

WELDED WIRE REINFORCED SLAB: 6\"/>

CONTROL JOINTS: WHERE SPECIFIED, SAWN CONTROL JOINTS IN SLAB-ON-GRADE SHALL BE CUT IN ACCORDANCE WITH ACI 302. JOINTS SHALL BE CUT WITHIN 12 HOURS OF SLAB PLACEMENT. THE LENGTH / WIDTH RATIOS OF SLAB AREAS SHALL NOT EXCEED 1.5 AND TYPICAL SPACING OF CUTS TO BE 12FT. DO NOT CUT WWM OR REINFORCING STEEL. (RECOMMENDED LOCATION OF CONTROL JOINTS IS SUBJECT TO OWNER AND CONTRACTOR'S APPROVAL. THE CONTROL JOINTS ARE NOT INTENDED TO PREVENT CRACKS BUT RATHER TO ENCOURAGE THE SLAB TO CRACK ON A GIVEN LINE.)

REBAR: ASTM A 615, GRADE 40, DEFORMED BARS, $F_y = 40$ KSI. ALL SLAB SPICES 40\"/>

STRUCTURAL CONNECTORS: MANUFACTURERS AND PRODUCT NUMBER FOR CONNECTORS, ANCHORS, AND REINFORCEMENT ARE LISTED FOR EXAMPLE NOT ENDORSEMENT. AN EQUIVALENT DEVICE OF THE SAME OR OTHER MANUFACTURER CAN BE SUBSTITUTED FOR ANY DEVICES LISTED IN THE EXAMPLE TABLES AS LONG AS IT MEETS THE REQUIRED LOAD CAPACITIES. MANUFACTURERS INSTALLATION INSTRUCTIONS MUST BE FOLLOWED TO ACHIEVE RATED LOADS.

ANCHOR BOLTS: A-307 ANCHOR BOLTS WITH MINIMUM EMBEDMENT AS SPECIFIED IN DRAWINGS BUT NO LESS THAN 7\"/>

WASHERS: WASHERS USED WITH 1/2\"/>

NAILS: ALL NAILS ARE COMMON NAILS UNLESS OTHERWISE SPECIFIED OR ACCEPTED BY FBC TEST REPORTS AS HAVING EQUAL STRUCTURAL VALUES.

REV-22-AUG-03

WINDLOAD ENGINEERING

"EVERYTHING YOU NEED FOR YOUR BUILDING PERMIT"

Mark Disosway P.E.

POB 868, Lake City, FL 32056 Phone: (386) 754-5419

Fax: (386) 269-4871 Email: windloadengineer@bellsouth.net

Location: Lot 5 Cannon Creek S/D Columbia County, Florida

The Nathan 4-Bed
Lot 5 Cannon Creek S/D

Builder: Ewpl, Inc.

Designer: DDS

Approved: FLPER83915

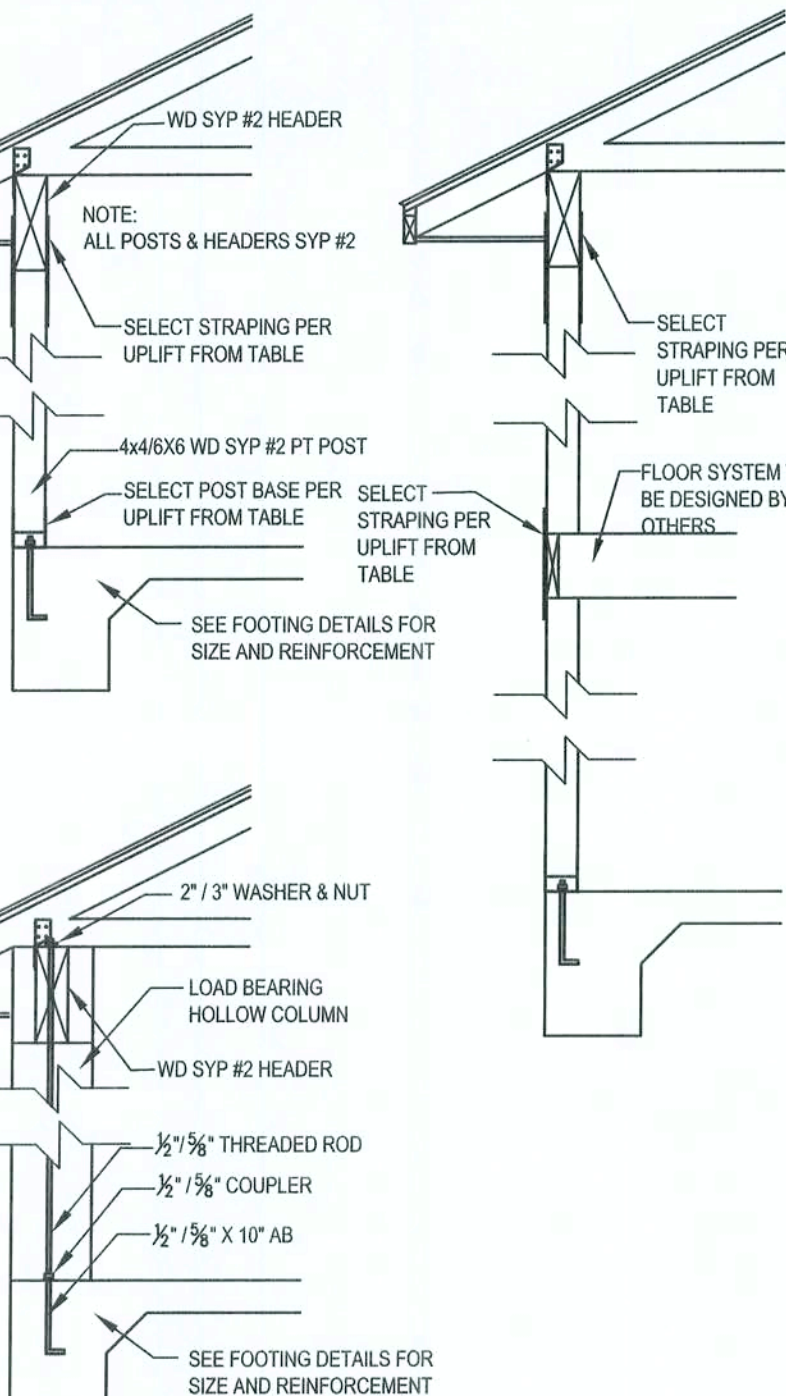
Revisions:

Sheet S-1 of 2 Sheets

Windload Engineering

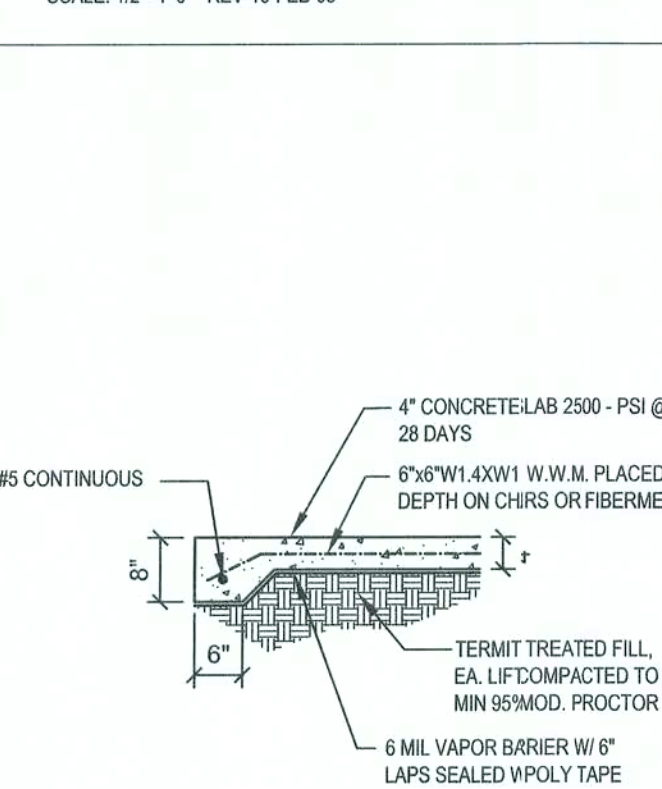
Job # 510175

OFFICE COPY

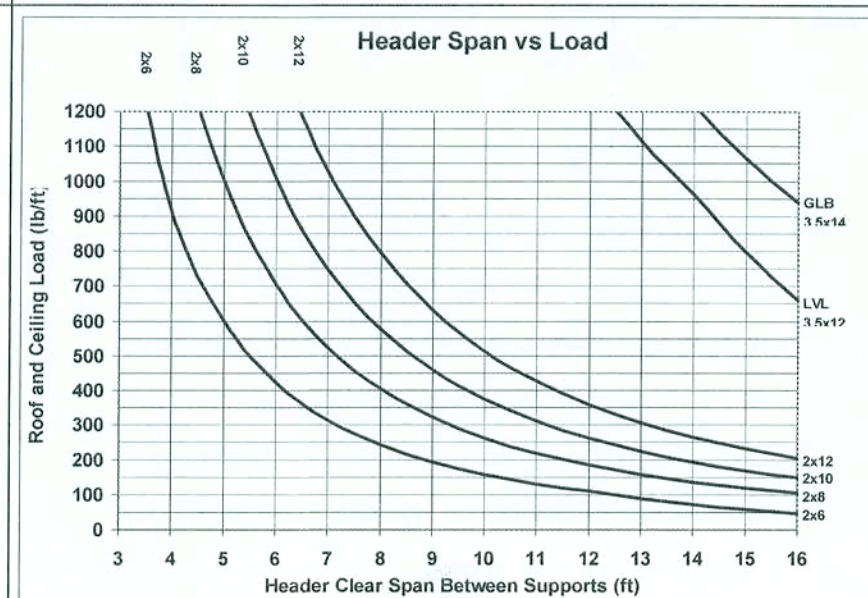


W12 - PORCH HEADER ANCHORS
SCALE: N.T.S. REV-18-JUL-03

F12 - NON - BEARING STEP FOOTING
SCALE: 1/2\"/>



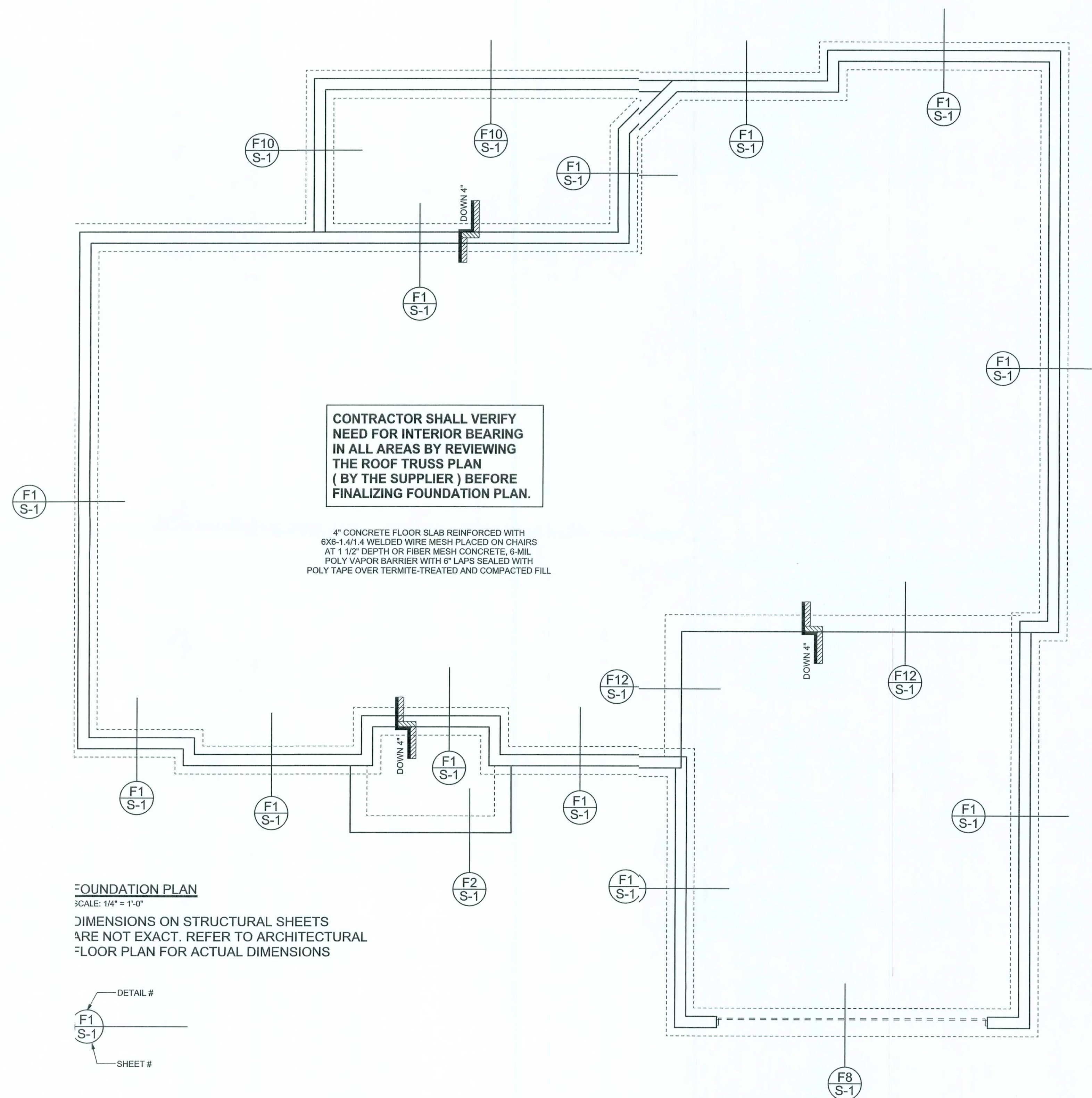
F13 - NON - BEARING THICKENED SLAB EDGE
SCALE: 1/2\"/>



Truss Design Loading: LL = 20psf, DL = 25psf		
7' Jack Truss	220	Half of 7' truss span + 24" overhang
8' Porch width	240	Half of 8' truss span + 24" overhang
8' Garage width	480	Half of 20' truss span + 24" overhang
Garage width 24'	560	Half of 24' truss span + 24" overhang
Main house width 24'	560	Half of 24' truss span + 24" overhang
Main house width 32'	640	Half of 32' truss span + 24" overhang
Main house width 40'	800	Half of 40' truss span + 24" overhang
Main house width 60'	1280	Half of 60' truss span + 24" overhang
Truss from above garage	1025	Half of 20' truss span + 24" overhang
Notes:		
1. Deflection limits: L/1,240; L/1,100		
2. Duration factor, C = 1.25, applied to P6 and P9. No increase in E for duration of loads.		
3. Allowable stresses: 1,600 psi for 24" and 36" SPS-C (strength increased 15% for 36" SPS-C)		
4. 1.5" x 6" GLB's A-Series, power treated P6 and P9, or 2" (or 2 1/4") 174-L, 2400 psi Fy		
5. 1.5" x 6" LVL's A-Series, CP Lams, 24" or 36" 174-L, 2400 psi Fy, 2400 psi E		
6. 1.5" x 6" LVL's A-Series, CP Lams, 24" or 36" 174-L, 2400 psi Fy, 2400 psi E		
7. Shear strength in blue lines: 10% for minor splits and cracks; 80% for loads of 200 psf or less		
8. Deflection has been increased for creep due to long term loads. Add 1.5 x L		
9. The chart is for NDS2010 bearing, normal shear, and deflection requirements		
10. Check for uniform loads only.		

REVISIONS

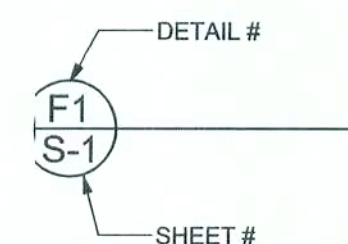
SOFTPLAN
ARCHITECTURAL DESIGN SOFTWARE



FOUNDATION PLAN

SCALE: 1/4" = 1'-0"

DIMENSIONS ON STRUCTURAL SHEETS
ARE NOT EXACT. REFER TO ARCHITECTURAL
FLOOR PLAN FOR ACTUAL DIMENSIONS



WINDLOAD ENGINEER: Mark Disoway,
P.E. No. 53015, PCB986, Lake City, FL
32056, 386-754-5419

DIMENSIONS:
Stated dimensions supersede scaled
dimensions. Refer all questions to
Mark Disoway, P.E. for resolution.
Do not proceed without clarification.

COPYRIGHTS AND PROPERTY RIGHTS:
Mark Disoway, P.E. hereby expressly reserves
its common law copyrights and property right in
these instruments of service. This document is
not to be reproduced, altered or copied in any
form or manner without first the express written
permission and consent of Mark Disoway.

CERTIFICATION: These plans and
"Windload Engineering", Sheet S-1, attached,
comply with Florida Building Code 2004,
Section 1609 wind loads, to the best of my
knowledge.

LIMITATION: This design is valid for one
building at specification. In case of conflict,
structural requirements, scope of work, and
builder responsibilities on sheet S-1 control.

MARI DISOWAY
P.E. 53015

Mark Disoway
21 OCT 05
SEAL

Expl, Inc.

The Nathan 4-Bed
Lot 5 Canon Creek S/D

ADDRESS:
Lot 5 Canon Creek S/D
Columbia County, Florida

Mark Disoway P.E.
P.O. Box 868
Lake City, Florida 32056
Phone: (386) 754 - 5419
Fax: (386) 269 - 4871

PRINTED DATE:
October 21, 2005

DRAWN BY: David Disoway CHECKED BY:

FINALS DATE:
21 / Oct / 05

JOB NUMBER:
5-0175

DRAWING NUMBER

S-2

OF 2 SHEETS