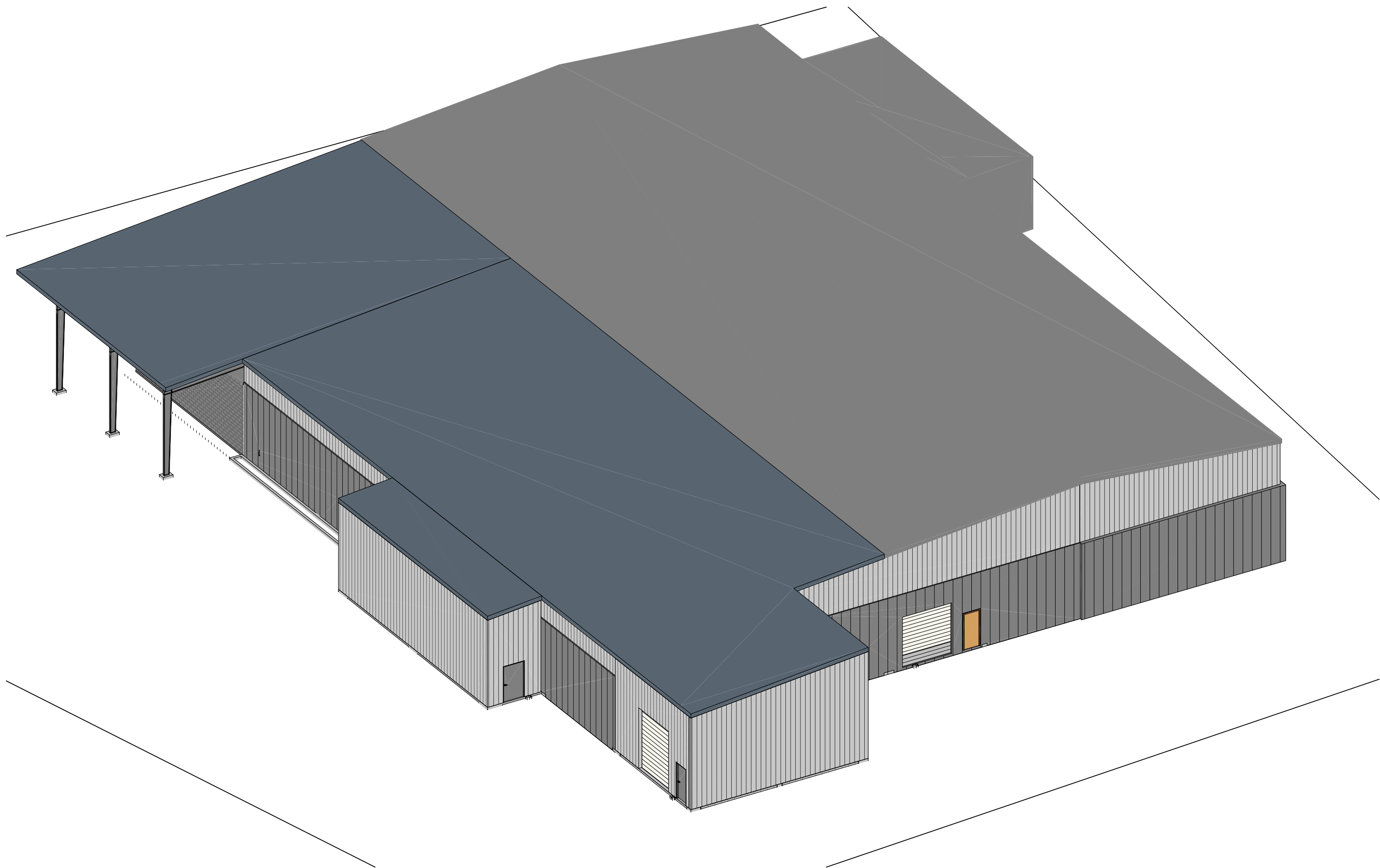


# NETTLE'S SAUSAGE

## PROCESS BUILDING EXPANSION

### LAKE CITY, FL



Revision Schedule		
Revision Number	Revision Description	Revision Date
1	ISSUED FOR PERMITTING	11/26/19
2	REVISED BUILDING AREA	12/12/19

SHEET SCHEDULE			
SHEET NUMBER	SHEET NAME	REVISION	REVISION DATE
T-001	TITLE	2	12/12/19
C-001	SITE PLAN	1	11/26/19
A-001	FLOOR PLAN	2	12/12/19
A-002	ELEVATIONS	1	11/26/19
A-003	ELEVATIONS	1	11/26/19
A-004	SECTIONS	1	11/26/19
A-005	SECTIONS	1	11/26/19
A-006	DETAILS	1	11/26/19
A-007	DETAILS	1	11/26/19
A-008	DETAILS	1	11/26/19
A-009	LIFE SAFETY	1	11/26/19
S-001	STRUCTURAL NOTES	1	11/26/19
S-002	FOUNDATION PLAN	1	11/26/19
S-003	FOUNDATION - MISC. DETAILS	1	11/26/19
S-004	FOUNDATION SECTIONS 1/2	1	11/26/19
S-005	FOUNDATION SECTIONS 2/2	1	11/26/19
L-001	LIGHTING PLAN	1	11/26/19
E-001	ELECTRICAL LAYOUT	1	11/26/19
E-002	ELECTRICAL NOTES	1	11/26/19
E-003	ELECTRICAL NOTES	1	11/26/19
M-001	BOILER PLAN	1	11/26/19
M-002	REFRIGERANT LAYOUT	1	11/26/19
M-003	REFRIGERANT EQUIPMENT	1	11/26/19
P-001	SANITARY LINES	1	11/26/19

#### STANDARDS AND CODES

- RELATED DOCUMENTS: THE GENERAL PROVISIONS OF THE CONTRACT, INCLUDING THE GENERAL CONDITIONS, SUPPLEMENTARY CONDITIONS AND SPECIAL CONDITIONS, (IF ANY), ALONG WITH THE GENERAL REQUIREMENTS, APPLY TO THE WORK SPECIFIED IN THIS SECTION.
- ALL WORK CONTAINED UNDER THIS CONTRACT IS BASED ON THE REQUIREMENTS CONTAINED IN THE LATEST EDITION OF ONE OR MORE OF THE FOLLOWING :
  - FLORIDA BUILDING CODE: 2017 FBC (6th EDITION)
  - FLORIDA PLUMBING CODE: 2017 FBC (6th EDITION)
  - FLORIDA MECHANICAL CODE: 2017 FBC (6th EDITION)
  - FLORIDA FIRE PREVENTION CODE: 2017 (6th EDITION)
  - ANSI A117.1 (PHYSICAL HANDICAPPED): 2017 FBC (6th EDITION)
  - OTHER STANDARDS AS REFERENCED OR SPECIFIED IN OTHER SECTIONS
  - 2015 NFPA LIFE SAFETY CODE 101
- CONTRACTOR AND ALL SUBCONTRACTORS SHALL COMPLY WITH ALL LAWS, CODES, AND ORDINANCES APPLICABLE TO THE WORK. THIS SHALL INCLUDE FEDERAL, STATE, COUNTY, AND/OR MUNICIPAL ENTITIES HAVING JURISDICTION.
- IF GOVERNING LAWS, CODES OR ORDINANCES CONFLICT WITH THE SPECIFICATION, THEN THE LAWS, CODES OR ORDINANCES SHALL TAKE PRECEDENCE.
- EXCEPT AS OTHERWISE REQUIRED BY THIS SECTION, ALL PRODUCTS AND WORKMANSHIP SHALL CONFORM TO THE BEST QUALITY AND PRACTICES RECOGNIZED BY AGENCIES, ASSOCIATIONS, COUNCILS, ETC., AS SPECIFIED IN INDIVIDUAL SECTIONS.

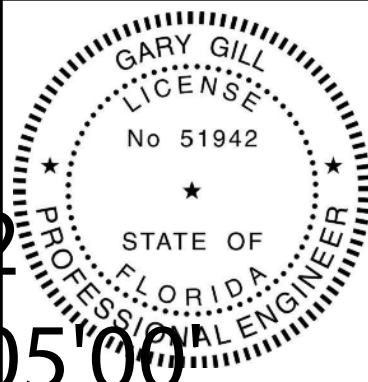
#### BUILDING INFORMATION

- BUILDING AREA: 10,539 S.F. TOTAL NEW BUILDING AREA
- CONSTRUCTION TYPE: TYPE "II-B" TABLE 601 - UNPROTECTED NON-SPRINKLED
  - ALLOWABLE AREA: 23000 S.F. ACTUAL: 10,539 S.F. TOTAL NEW BUILDING AREA
  - ALLOWABLE STORIES: 3 ACTUAL: 1
- OCCUPANCY CLASS: BUSINESS GROUP S-2
- OCCUPANCY LOADING / EGRESS REQUIREMENT:
  - WAREHOUSE: 500 S.F. / FLOOR AREA PER OCCUPANT
- LIFE SAFETY INFORMATION:
  - COMMON PATH OF EGRESS TRAVEL MAX 75 FT TABLE 1006.2.1
  - EXIT ACCESS TRAVEL DISTANCE MAX 200 FT TABLE 1017.2

PRINTED COPIES OF THIS DOCUMENT  
ARE NOT CONSIDERED SIGNED AND SEALED  
AND THE SIGNATURE MUST BE VERIFY ON  
ANY ELECTRONIC COPIES.

Gary Gill  
2019.12.12  
12:43:14 -05'00"

*Gill*  
Engineering Services, Inc.



#### PROCESS PLANT EXPANSION

LAKE CITY, FL

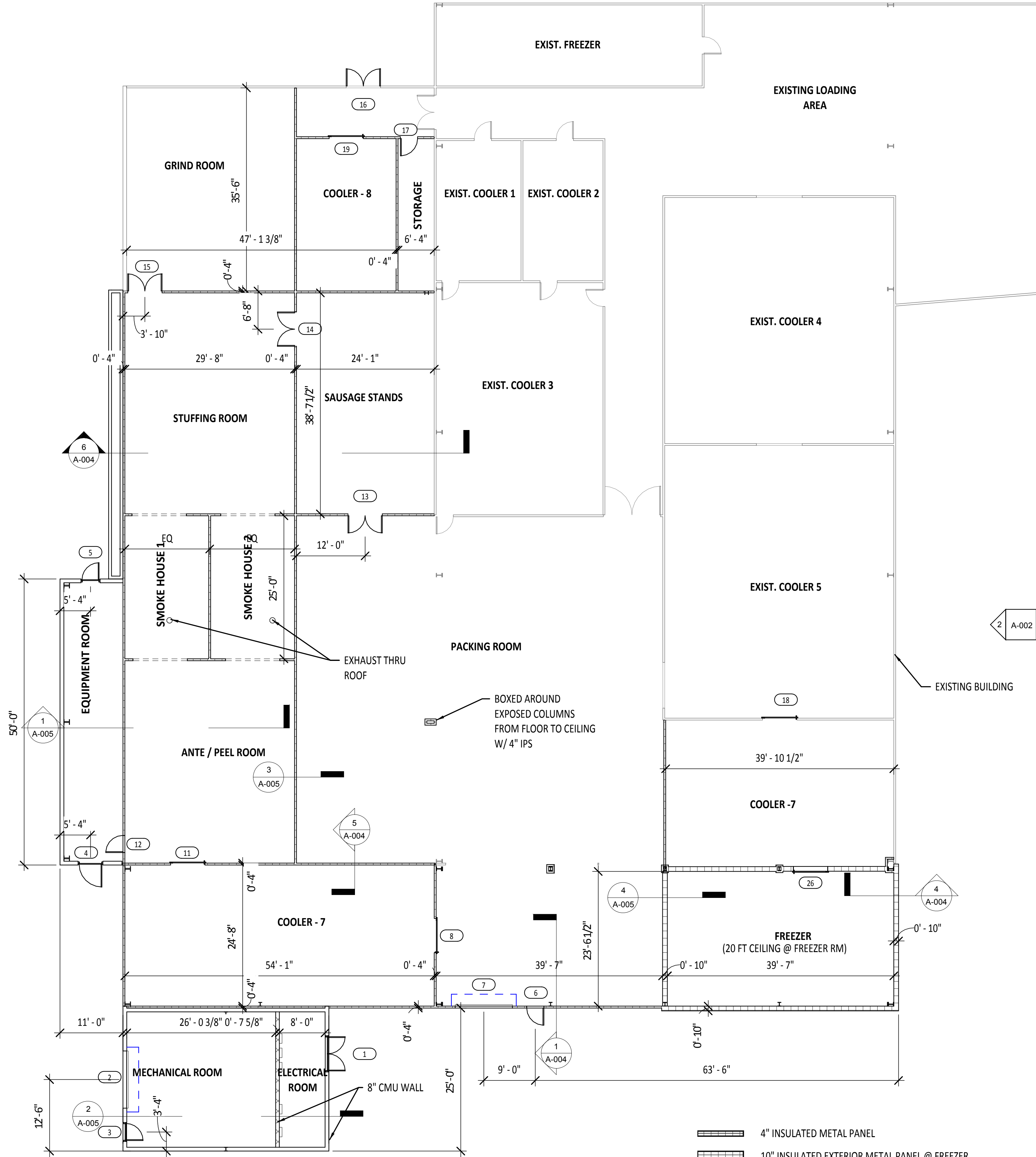
NETTLES SAUSAGES			GILL ENGINEERING SERVICES, INC AUTH # 30824 GARY GILL PE #51942 426 SW COMMERCE DR 130-M LAKE CITY, FL 32025 386-590-1242
DRAWN BY:	GG		
CHKD BY:	GG		
APPRD BY:	GG		

#### TITLE

1809-020	DWG #:	T-001	REV #:	2
----------	--------	-------	--------	---

12/12/2019 12:35:13 PM  
email: ggill@gillengineering.com





1  
A-002

TOTAL NEW BUILDING AREA : 10,539 S.F.

Revision Schedule		
Revision Number	Revision Description	Revision Date
1	ISSUED FOR PERMITTING	11/26/19
2	REVISED BUILDING AREA	12/12/19

ROOM SCHEDULE						
ROOM NAME	WALL FINISH	WALL FINISH CLASS	BASE FINISH	FLOOR FINISH	CEILING FINISH	CEILING FINISH CLASS
ANTE / PEEL ROOM	4" IMP			CONCRETE	4" IMP	
ANTE ROOM						
COOLER - 7	4" IMP			CONCRETE	4" IMP	
COOLER - 7	4" IMP			CONCRETE	4" IMP	
COOLER - 7	4" IMP			CONCRETE	4" IMP	
COOLER - 8						
ELECTRICAL ROOM	8" BLOCK			CONCRETE	4" IMP	
EQUIPMENT ROOM	8" BLOCK			CONCRETE	4" IMP	
EXIST. COOLER 1	4" IMP			CONCRETE	4" IMP	
EXIST. COOLER 2	4" IMP			CONCRETE	4" IMP	
EXIST. COOLER 3	4" IMP			CONCRETE	4" IMP	
EXIST. COOLER 4	4" IMP			CONCRETE	4" IMP	
EXIST. COOLER 5	4" IMP			CONCRETE	4" IMP	
EXIST. FREEZER	4" IMP			CONCRETE	4" IMP	
EXISTING LOADING AREA	4" IMP			CONCRETE	4" IMP	
FREEZER						
GRIND ROOM	4" IMP			CONCRETE	4" IMP	
MECHANICAL ROOM	4" IMP			CONCRETE	4" IMP	
PACKING ROOM	4" IMP			CONCRETE	4" IMP	
PACKING ROOM						
PEEL ROOM	4" IMP			CONCRETE	4" IMP	
PRODUCT DISPLAY	4" IMP			CONCRETE	4" IMP	
SAUSAGE STANDS	4" IMP			CONCRETE	4" IMP	
SMOKE HOUSE 1	4" IMP			CONCRETE	4" IMP	
SMOKE HOUSE 1						
SMOKE HOUSE 2						
STORAGE	4" IMP			CONCRETE	4" IMP	
STUFFING ROOM	4" IMP			CONCRETE	4" IMP	

DOOR SCHEDULE				
Mark	Width	Height	Finish	Description
1	6' - 0"	7' - 0"		DOUBLE EXTERIOR DOOR
2	10' - 0"	12' - 0"		ROLLUP DOOR
3	4' - 0"	7' - 0"		EXTERIOR METAL DOOR
4	4' - 0"	7' - 0"		EXTERIOR METAL DOOR
5	4' - 0"	7' - 0"		EXTERIOR METAL DOOR
6	3' - 0"	7' - 0"		INTERIOR DOOR
7	10' - 0"	10' - 0"		ROLLUP DOOR
8	6' - 0"	7' - 0"		SLIDER
11	6' - 0"	7' - 0"		SLIDER
12	3' - 0"	7' - 0"		INTERIOR DOOR
13	6' - 0"	6' - 8"		IMPACT
14	6' - 0"	6' - 8"		IMPACT
15	6' - 0"	6' - 8"		IMPACT
16	6' - 0"	7' - 0"		DOUBLE EXTERIOR DOOR
17	3' - 0"	7' - 0"		INTERIOR DOOR
18	6' - 0"	7' - 0"		SLIDER
19	6' - 0"	7' - 0"		SLIDER
20	0' - 0"	0' - 0"		
21	0' - 0"	0' - 0"		
24	0' - 0"	0' - 0"		
25	0' - 0"	0' - 0"		
26	6' - 0"	7' - 0"		SLIDER

PRINTED COPIES OF THIS DOCUMENT  
ARE NOT CONSIDERED SIGNED AND SEALED  
AND THE SIGNATURE MUST BE VERIFY ON  
ANY ELECTRONIC COPIES.

Gary Gill  
2019.12.12 12:43:59  
-05'00'



## PROCESS PLANT EXPANSION

LAKE CITY, FL

NETTLES SAUSAGES

DRAWN BY: GG  
CHKD BY: GG  
APPRD BY: GG

GILL ENGINEERING SERVICES, INC  
AUTH # 30824  
GARY GILL PE #51942  
426 SW COMMERCE DR 130-M  
LAKE CITY, FL 32025 386-590-1242

## FLOOR PLAN

1809-020

DWG #:

A-001

REV #:

2

12/12/2019 12:35:10 PM

email: ggill@gillengineering.com