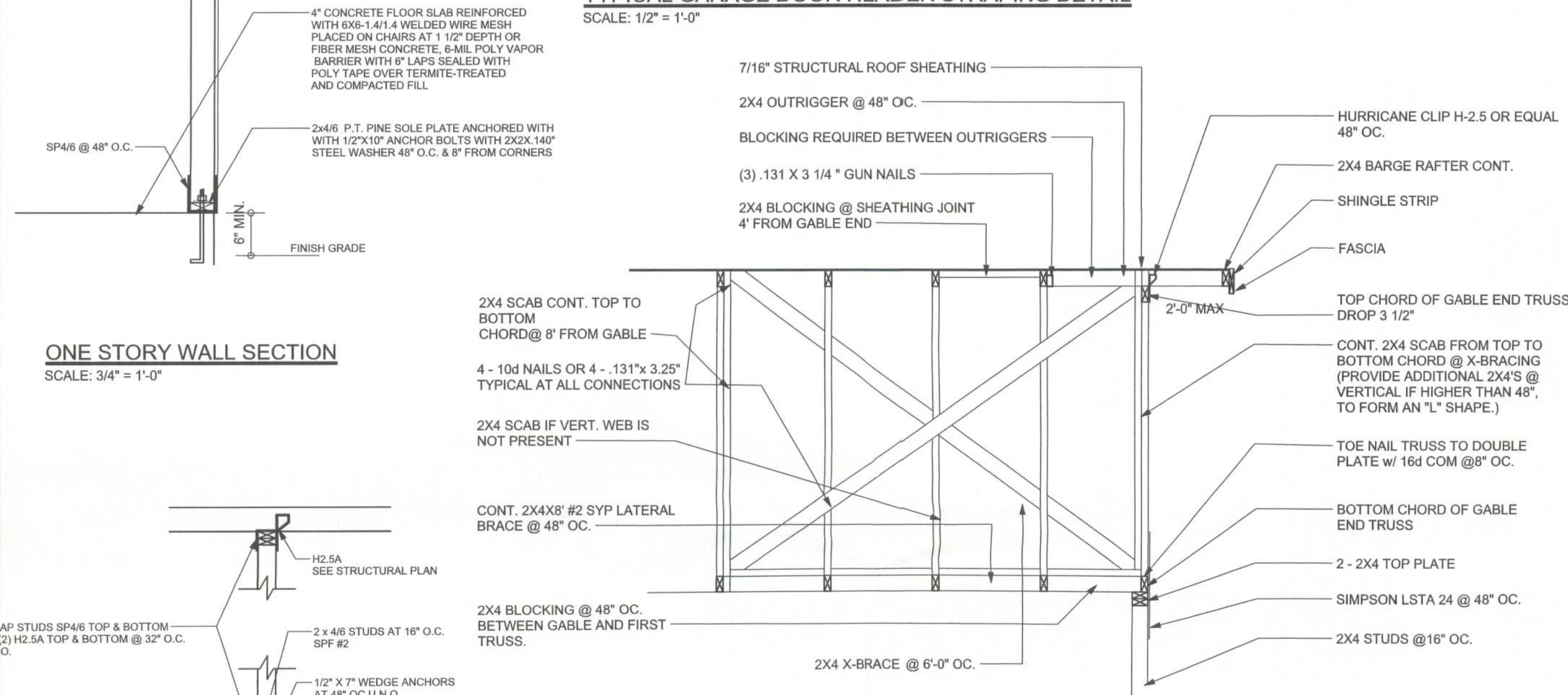
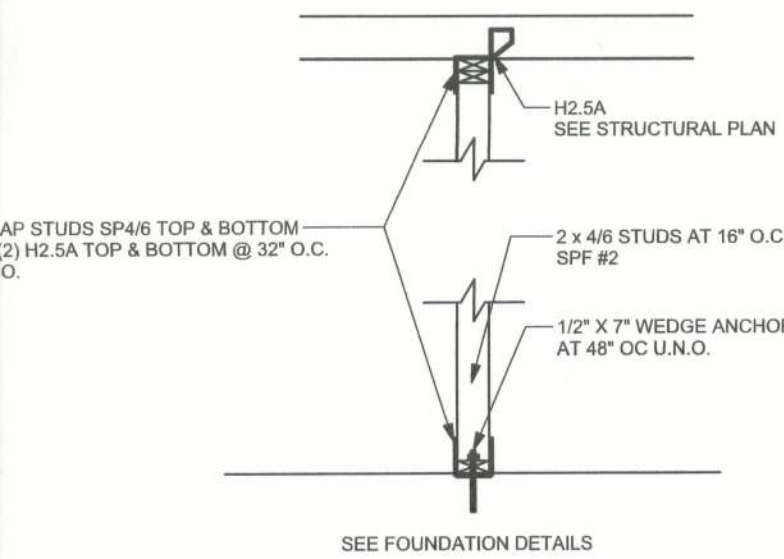


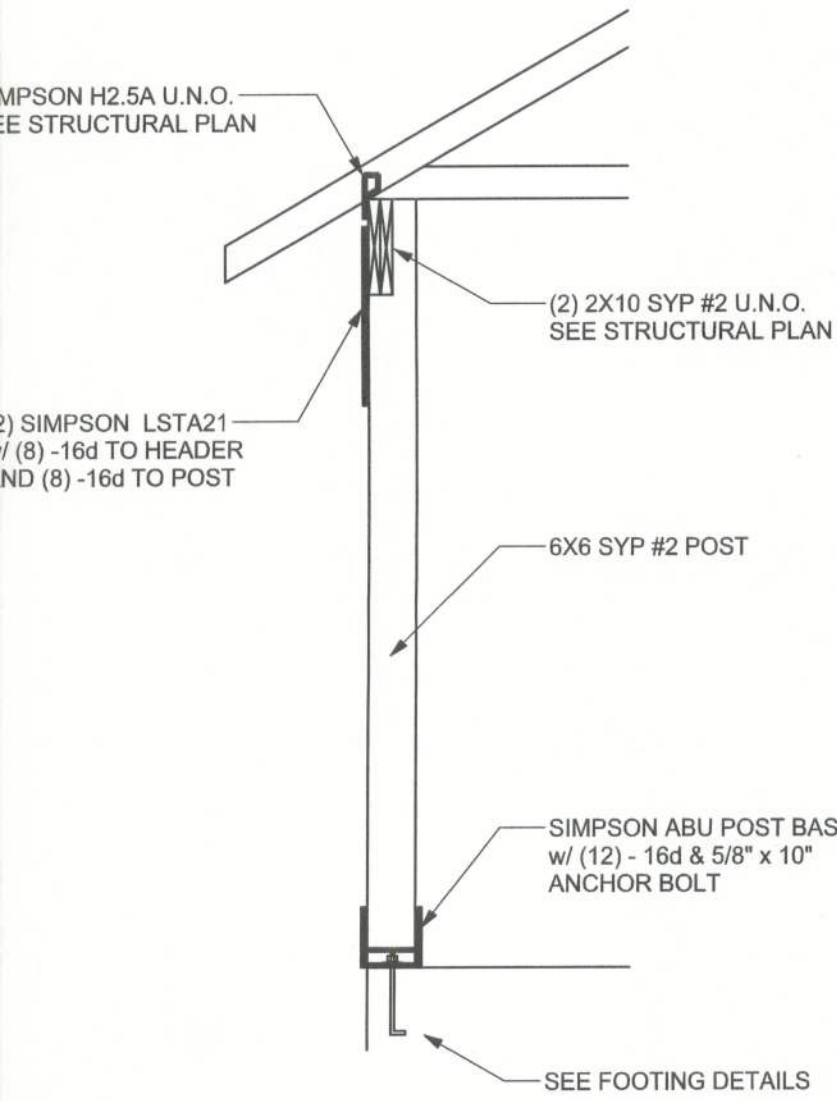
TYPICAL GARAGE DOOR HEADER STRAPING DETAIL
SCALE: 1/2\"/>



ONE STORY WALL SECTION
SCALE: 3/4\"/>

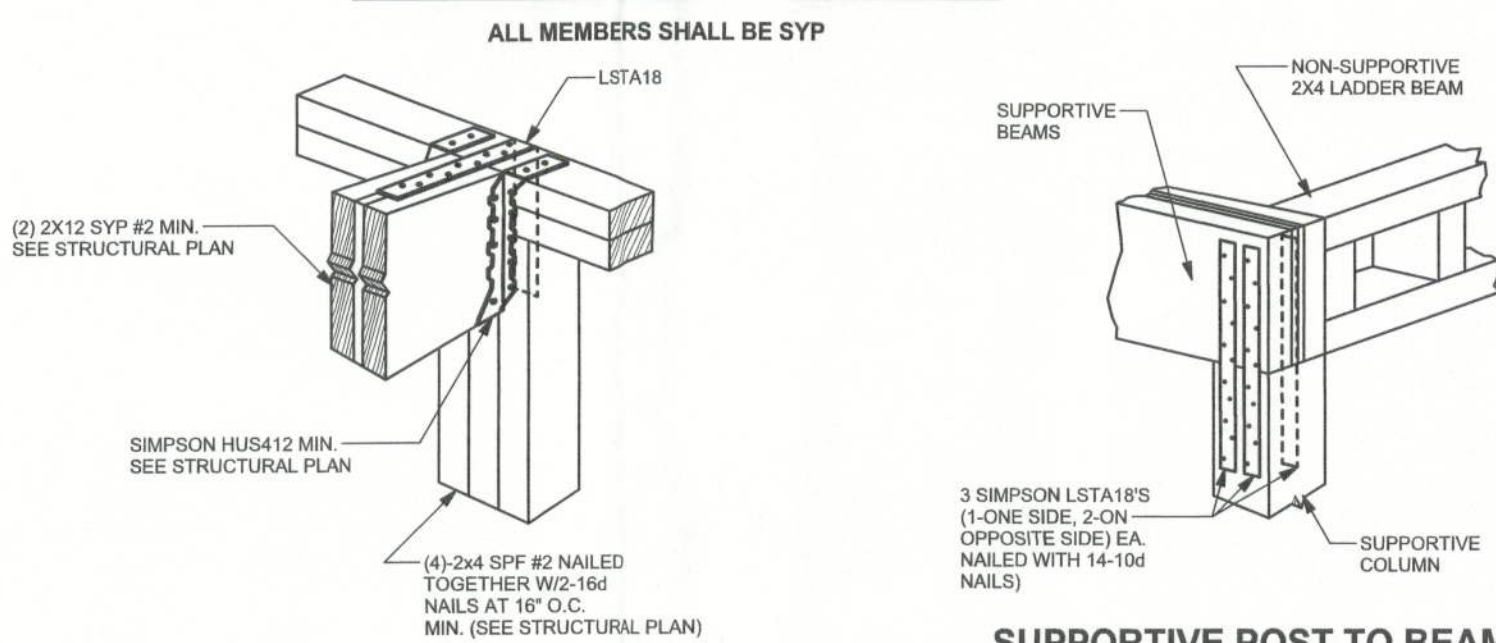


INTERIOR BEARING WALL
SCALE: 1/2\"/>

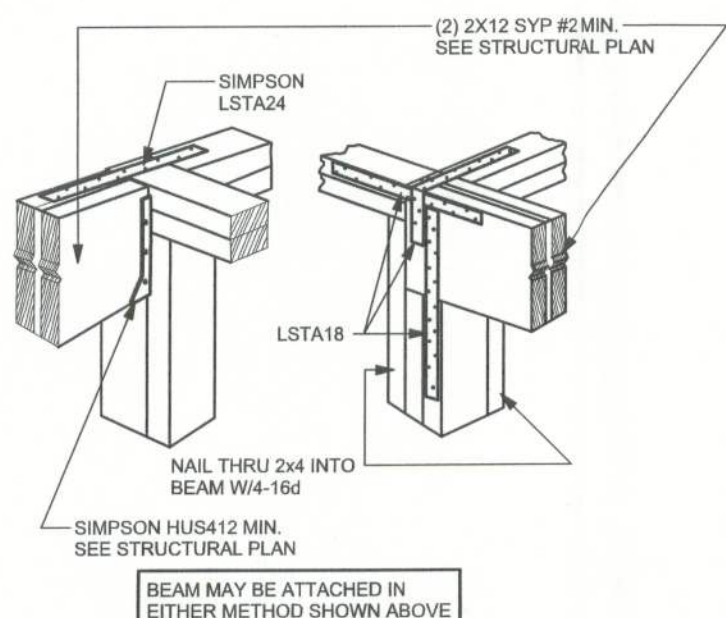


TYPICAL PORCH POST DETAIL
SCALE: 1/2\"/>

TYPICAL GABLE END (X-BRACING)

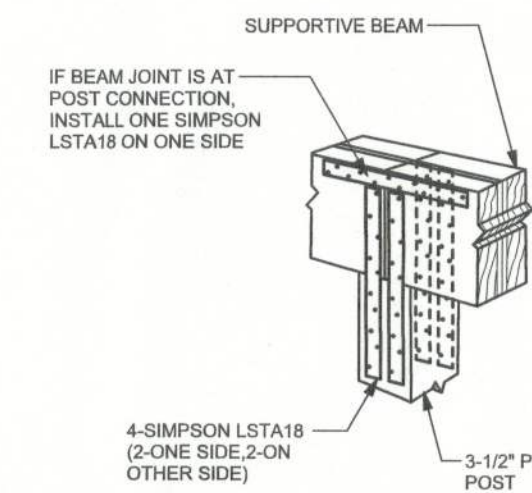


BEAM MID-WALL CONNECTION DETAIL
SCALE: N.T.S.

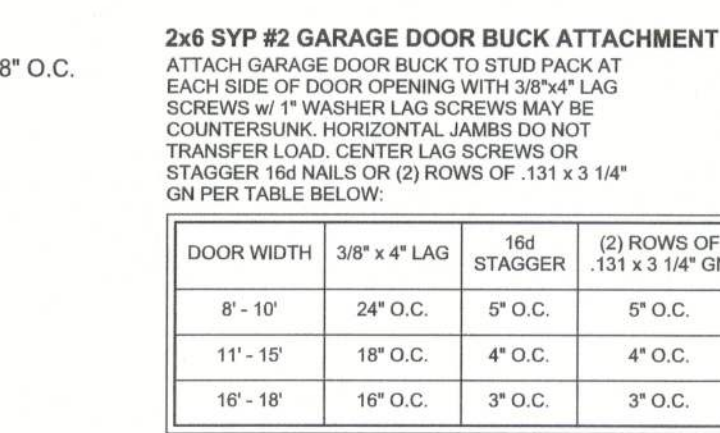


BEAM CORNER CONNECTION DETAIL
SCALE: N.T.S.

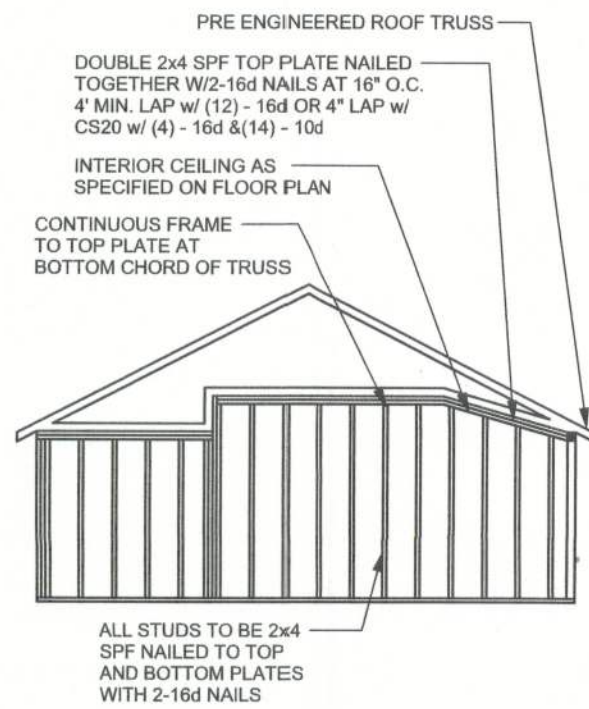
SUPPORTIVE POST TO BEAM DETAIL FOR SINGLE BEAM
SCALE: N.T.S.



SUPPORTIVE CENTER POST TO BEAM DETAIL
SCALE: N.T.S.



GARAGE DOOR BUCK INSTALLATION DETAIL
SCALE: N.T.S.



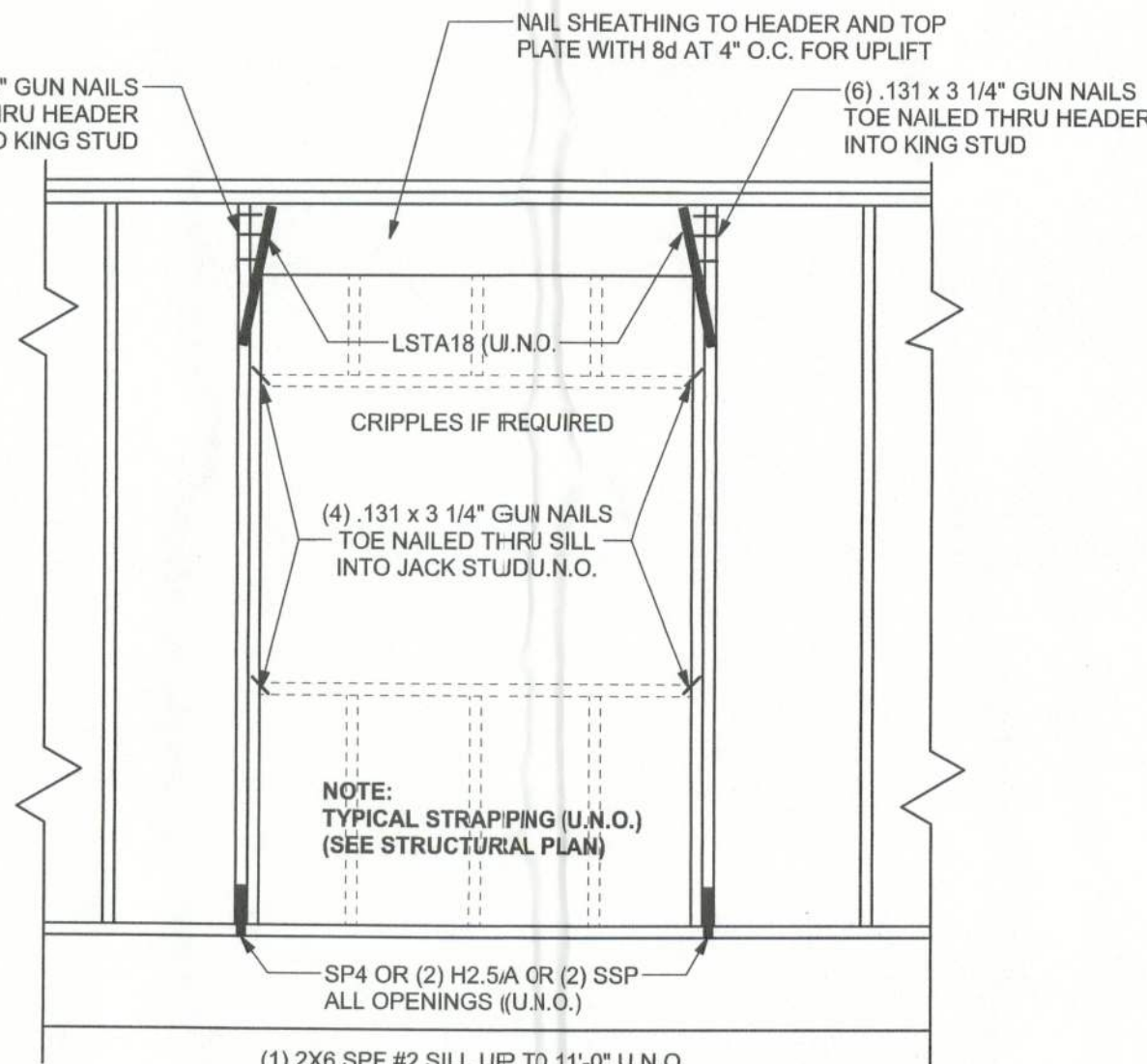
CONTINUOUS FRAME TO CEILING DIAPHRAGM DETAIL
SCALE: N.T.S.

EXTERIOR WALL STUD TABLE FOR SPF #2 STUDS

(1) 2x4 @ 16\"/>

GRADE & SPECIES TABLE

		Fb (psi)	E (10 ⁶ psi)
2x8	SYP #2	1200	1.6
2x10	SYP #2	1050	1.6
2x12	SYP #2	975	1.6
GLB	24F-V3 SP	2400	1.8
LSL	TIMBERSTRAND	1700	1.7
LVL	MICROLAM	1600	1.9
PSL	PARALAM	2900	2.0



TYPICAL HEADER STRAPING DETAIL
SCALE: 1/2\"/>

GENERAL NOTES:

TRUSSES: TRUSSES SHALL BE DESIGNED BY A FLORIDA LICENSED ENGINEER IN ACCORDANCE WITH THE FBC 2001. TRUSS ENGINEERING SHALL INCLUDE TRUSS DESIGN, PLACEMENT PLANS, TEMPORARY AND PERMANENT BRACING DETAILS, TRUSS-TO-TRUSS CONNECTIONS, AND UPLIFT AND REACTION LOADS FOR ALL BEARING LOCATIONS. TRUSS ENGINEERING IS THE RESPONSIBILITY OF THE TRUSS MANUFACTURER AND SHALL BE SIGNED & SEALED BY THE MANUFACTURER'S DESIGN ENGINEER. IT IS THE BUILDER'S RESPONSIBILITY TO VERIFY THE TRUSS DESIGNER FULLY SATISFIED ALL THE ABOVE REQUIREMENTS AND TO SELECT UPLIFT CONNECTIONS BASED ON TRUSS ENGINEERING UPLIFT AND PROVIDE FOOTINGS FOR INTERIOR BEARING WALLS. BUILDER IS TO FURNISH TRUSS ENGINEERING TO WIND LOAD ENGINEER FOR REVIEW OF TRUSS REACTIONS ON THE BUILDING STRUCTURE. STRAP 2X8 RAFTERS WITH MIN UPLIFT CONNECTION 415LB EACH END, 2X8 RAFTERS 700 LB EACH END.

SITE PREPARATION: SITE ANALYSIS AND PREPARATION IS NOT PART OF THIS PLAN.

FOUNDATION: CONFIRM THAT THE FOUNDATION DESIGN & SITE CONDITIONS MEET GRAVITY LOAD REQUIREMENTS (ASSUME 1000 PSF BEARING CAPACITY UNLESS VISUAL OBSERVATION OR SOILS TEST PROVES OTHERWISE).

CONCRETE: MINIMUM COMPRESSIVE STRENGTH OF CONCRETE AT 28 DAYS, F_c = 3000 PSI.

WELDED WIRE REINFORCED SLAB: 6\"/>

FIBER CONCRETE SLAB: CONCRETE SLAB ON GROUND CONTAINING SYNTHETIC FIBER REINFORCEMENT. FIBER LENGTH 1/2 INCH TO 2 INCHES. DOSAGE AMOUNTS FROM 0.75 TO 1.5 POUNDS PER CUBIC YARD PER THE MANUFACTURER'S RECOMMENDATIONS. FIBERS TO COMPLY WITH ASTM C 1116. SUPPLIER TO PROVIDE ASTM C 1116 CERTIFICATION OF COMPLIANCE WHEN REQUESTED BY BUILDING OFFICIAL.

CONTROL JOINTS: WHERE SPECIFIED, SAWN CONTROL JOINTS IN SLAB-ON-GRADE SHALL BE CUT IN ACCORDANCE WITH ACI 302. JOINTS SHALL BE CUT WITHIN 12 HOURS OF SLAB PLACEMENT. THE LENGTH / WIDTH RATIOS OF SLAB AREAS SHALL NOT EXCEED 1.5 AND TYPICAL SPACING OF CUTS TO BE 10FT. DO NOT CUT W/M OR REINFORCING STEEL. (RECOMMENDED LOCATION OF CONTROL JOINTS IS SUBJECT TO OWNER AND CONTRACTOR'S APPROVAL. THE CONTRACTOR SHALL NOT INTEND TO PREVENT CRACKS BUT RATHER TO ENCOURAGE THE SLAB TO CRACK ON A GIVEN LINE.)

REBAR: ASTM A 615, GRADE 60, DEFORMED BARS, F_y = 60 KSI. ALL LAP SPICES 40\"/>

GLULAM BEAMS: GLULAM BEAM, GLB, 24F-V3SP, F_b = 2.4x10⁶ E = 1800ksi. UNO. SUPPLIER MAY SUPPLY AN ALTERNATE BEAM WITH EQUAL PROPERTIES OR MAY SUBMIT THEIR OWN SIZING CALCULATIONS. ROOF SHEATHING: ALL ROOFS ARE HORIZONTAL DIAPHRAGMS. 7/16\"/>

STRUCTURAL CONNECTORS: MANUFACTURERS AND PRODUCT NUMBER FOR CONNECTORS, ANCHORS, AND REINFORCEMENT ARE LISTED FOR EXAMPLE NOT ENDORSEMENT. AN EQUIVALENT DEVICE OF THE SAME OR OTHER MANUFACTURER CAN BE SUBSTITUTED FOR ANY DEVICES LISTED IN THE EXAMPLE TABLES AS LONG AS IT MEETS THE REQUIRED LOAD CAPACITIES. THE MANUFACTURER'S INSTALLATION INSTRUCTIONS MUST BE FOLLOWED TO ACHIEVE RATED LOADS.

ANCHOR BOLTS: A-307 ANCHOR BOLTS WITH MINIMUM EMBEDMENT AS SPECIFIED IN DRAWINGS BUT NO LESS THAN 7\"/>

WASHERS: WASHERS USED WITH 1/2\"/>

NAILS: ALL NAILS ARE COMMON NAILS UNLESS OTHERWISE SPECIFIED OR ACCEPTED BY FBC TEST REPORTS AS HAVING EQUAL STRUCTURAL VALUES.

BUILDER'S RESPONSIBILITY

THE BUILDER AND OWNER ARE RESPONSIBLE FOR THE FOLLOWING, WHICH ARE SPECIFICALLY NOT PART OF THE WIND LOAD ENGINEER'S SCOPE OF WORK.

CONFIRM SITE CONDITIONS, FOUNDATION BEARING CAPACITY, GRADE AND BACKFILL HEIGHT, WIND SPEED AND DEBRIS ZONE, AND FLOOD ZONE.

PROVIDE MATERIALS AND CONSTRUCTION TECHNIQUES, WHICH COMPLY WITH FBC 2001 REQUIREMENTS FOR THE STATED WIND VELOCITY AND DESIGN PRESSURES.

PROVIDE A CONTINUOUS LOAD PATH FROM TRUSSES TO FOUNDATION. IF YOU BELIEVE THE PLAN OMMITS A CONTINUOUS LOAD PATH CONNECTION, CALL THE WIND LOAD ENGINEER IMMEDIATELY.

VERIFY THE TRUSS MANUFACTURER'S SEALED ENGINEERING INCLUDES TRUSS DESIGN, PLACEMENT PLANS, TEMPORARY AND PERMANENT BRACING DETAILS, TRUSS-TO-TRUSS CONNECTIONS, AND UPLIFT AND REACTION LOADS FOR ALL BEARING LOCATIONS.

ROOF SYSTEM DESIGN

THE SEAL ON THESE PLANS FOR COMPLIANCE WITH FBC 2001, SECTION 1606 IS BASED ON REACTIONS, UPLIFTS, AND BEARING LOCATIONS IN TRUSS ENGINEERING SUBMITTED TO THE WIND LOAD ENGINEER. IT IS THE RESPONSIBILITY OF THE BUILDER TO CHECK ALL DETAILS OF THE COMPLETE ROOF SYSTEM DESIGN SUBMITTED BY THE TRUSS MANUFACTURER AND HAVE IT SIGNED, AND SEALED BY A DESIGN PROFESSIONAL FOR CORRECT APPLICATION OF FBC 2001 REQUIRED LOADS AND ANY SPECIAL LOADS. THE BUILDER IS RESPONSIBLE TO REVIEW EACH INDIVIDUAL TRUSS MEMBER AND THE TRUSS ROOF SYSTEM AS A WHOLE AND TO PROVIDE RESTRAINT FOR ANY LATERAL BRACING. THE BUILDER SHOULD USE CARE CHECKING THE ROOF DESIGN BECAUSE THE WIND LOAD ENGINEER IS SPECIFICALLY NOT RESPONSIBLE FOR THE TRUSS LAYOUT WHICH WAS CREATED BY THE TRUSS MANUFACTURER AND THE TRUSS DESIGNER ALSO DENIES RESPONSIBILITY FOR THE LAYOUT PER NOTES ON THEIR SEALED TRUSS SHEETS.

ANCHOR TABLE

OBTAIN UPLIFT REQUIREMENTS FROM TRUSS MANUFACTURER'S ENGINEERING

UPLIFT LBS. SYP	UPLIFT LBS. SPF	TRUSS CONNECTOR*	TO PLATES	TO RAFTER/TRUSS	TO STUDS
< 420	< 245	H5A	3-8d	3-8d	
< 455	< 265	H3	4-8d	4-8d	
< 380	< 235	H4	4-8d	4-8d	
< 455	< 320	H3	4-8d	4-8d	
< 415	< 365	H2.5	5-8d	5-8d	
< 600	< 535	H2.5A	5-8d	5-8d	
< 950	< 820	H6	8-8d	8-8d	
< 745	< 565	H8	5-10d, 1 1/2"	5-10d, 1 1/2"	
< 1465	< 1050	H14-1	13-8d	12-8d, 1 1/2"	
< 1465	< 1050	H14-2	15-8d	12-8d, 1 1/2"	
< 990	< 850	H10-1	8-8d, 1 1/2"	8-8d, 1 1/2"	
< 780	< 655	H10-2	6-10d	6-10d	
< 1470	< 1265	H16-1	10-10d, 1 1/2"	10-10d, 1 1/2"	
< 1470	< 1265	H16-2	10-10d, 1 1/2"	10-10d, 1 1/2"	
< 1090	< 865	MTS24C	7-10d 1 1/2"	7-10d 1 1/2"	
< 1450	< 1245	HTS24	12-10d 1 1/2"	12-10d 1 1/2"	
< 2900	< 2490	2 - HTS24			
< 2050	< 1785	LGT2	14-16d	14-16d	
HEAVY GIRDER TIEDOWNS*					TO FOUNDATION
< 3965	< 3330	MGT		22-10d	1-5/8" THREADED ROD 12" EMBEDMENT
< 10680	< 6485	HGT-2		16-10d	2-5/8" THREADED ROD 12" EMBEDMENT
< 10530	< 9035	HGT-3		16-10d	2-5/8" THREADED ROD 12" EMBEDMENT
< 9250	< 9250	HGT-4		16-10d	2-5/8" THREADED ROD 12" EMBEDMENT
		STUD STRAP CONNECTOR*	TO STUDS		
< 435	< 435	SSP DOUBLE TOP PLATE	3-10d		4-10d
< 455	< 420	SSP SINGLE SILL PLATE	1-10d		4-10d
< 825	< 825	DSP DOUBLE TOP PLATE	6-10d		8-10d
< 825	< 600	DSP SINGLE SILL PLATE	2-10d		8-10d
< 885	< 760	SP4			6-10d, 1 1/2"
< 1240	< 1065	SPH4			10-10d, 1 1/2"
< 885	< 760	SP6			6-10d, 1 1/2"
< 1240	< 1065	SPH6			10-10d, 1 1/2"
< 1235	< 1165	LSTA18	14-10d		
< 1235	< 1235	LSTA21	16-10d		
< 1030	< 1030	CS20	18-8d		
< 1705	< 1705	CS16	28-8d		
		STUD ANCHORS*	TO STUDS		TO FOUNDATION
< 1350	< 1305	LTT19	8-16d		1/2" AB
< 2310	< 2310	LTT31	18-10d, 1 1/2"		1/2" AB
< 2775	< 2570	H20A	2-5/8" BOLTS		5/8" AB
< 4175	< 3695	HTT16	18-16d		5/8" AB
< 1400	< 1400	PHAD2	16-16d		
< 3335	< 3335	HPAD22	16-16d		
< 2200	< 2200	ABU44	12-16d		1/2" AB
< 2300	< 2300	ABU66	12-16d		1/2" AB
< 2320	< 2320	ABU88	16-16d		2-5/8" AB

DESIGN DATA

WIND LOADS PER FLORIDA BUILDING CODE 2001, SECTION 1606.2

(ENCLOSED SIMPLE DIAPHRAGM BUILDINGS WITH FLAT, HIPPED, OR GABLE ROOFS; MEAN ROOF HEIGHT NOT EXCEEDING LEAST HORIZONTAL DIMENSION OR 60 FT; NOT ON UPPER HALF OF HILL OR ESCARPMENT 60FT IN EXP. B, 30FT IN EXP. C AND >10% SLOPE AND UNOBSTRUCTED UPWIND FOR 50x HEIGHT OR 1 MILE WHICHEVER IS LESS.)

BUILDING IS NOT IN THE HIGH VELOCITY HURRICANE ZONE

BUILDING IS NOT IN THE WIND-BORNE DEBRIS REGION

1. BASIC WIND SPEED = 110 MPH
2. WIND EXPOSURE = B
3. WIND IMPORTANCE FACTOR = 1.0
4. BUILDING CATEGORY = II
5. ROOF ANGLE = 10-45 DEGREES
6. MEAN ROOF HEIGHT = <30 FT
7. INTERNAL PRESSURE COEFFICIENT = N/A (ENCLOSED BUILDING, 1606.2)
8. COMPONENTS AND CLADDING DESIGN WIND PRESSURES (FBC TABLE 1606.2 B&C)

Zone	Effective Wind Area (ft ²)	10	100
1	19.9	21.8	18.1
2	19.9	25.5	18.1
2 Other		-40.6	-40.6
3	19.9	25.5	18.1
3 Other		-68.3	-42.4
4	21.8	23.8	18.5
5	21.8	29.1	18.5
Doors & Windows Worst Case (Zone 5, 10 ft ²)		21.8	-28.1
8x7 Garage Door		19.5	-22.9
16x7 Garage Door		18.5	-21.0

DESIGN LOADS

FLOOR	40 PSF (ALL OTHER DWELLING ROOMS)
	30 PSF (SLEEPING ROOMS)
	30 PSF (ATTICS WITH STORAGE)
	10 PSF (ATTICS WITHOUT STORAGE, <3:12)
ROOF	20 PSF (FLAT OR <4:12)
	16 PSF (4:12 TO <12:12)
	12 PSF (12:12 AND GREATER)
STAIRS	40 PSF (ONE & TWO FAMILY DWELLINGS)
SOIL BEARING CAPACITY	1000PSF
NOT IN FLOOD ZONE (BUILDER TO VERIFY)	

REVISIONS

SOFTPLAN
ARCHITECTURAL DESIGN SOFTWARE

WINDLOAD ENGINEER: Mark Disoway,
PE No.53915, POB 868, Lake City, FL
32050, 386-754-5419

DIMENSIONS:
Stated dimensions supersede scaled dimensions. Refer all questions to Mark Disoway, P.E. for resolution. Do not proceed without clarification.

COPYRIGHTS AND PROPERTY RIGHTS:
Mark Disoway, P.E. hereby expressly reserves its common law copyrights and property right in these instruments of service. This document is not to be reproduced, altered or copied in any form or manner without first the express written permission and consent of Mark Disoway.

CERTIFICATION: I hereby certify that I have examined this plan, and that the applicable portions of the plan, relating to wind engineering comply with section 1606, florida building code 2001, to the best of my knowledge.

LIMITATION: This design is valid for one building, at specified location.

MARK DISOWAY
P.E. 53915

SEAL

Erkinger Builders

SPEC HOUSE

ADDRESS:
Lot # 16, Phase I
Emerald Cove S/D
Lake City, Florida

Mark Disoway P.E.
P.O. Box 868
Lake City, Florida 32056
Phone: (386) 754 - 5419
Fax: (386) 754 - 6749
Email: mdpe@bellsouth.net

PRINTED DATE:
August 25, 2005

DRAWN BY:
Evan Beamsley

STRUCTURAL BY:
David Disoway

FINALS DATE:
22/Aug/05

JOB NUMBER:
508175

DRAWING NUMBER

S-1

OF 6 SHEETS